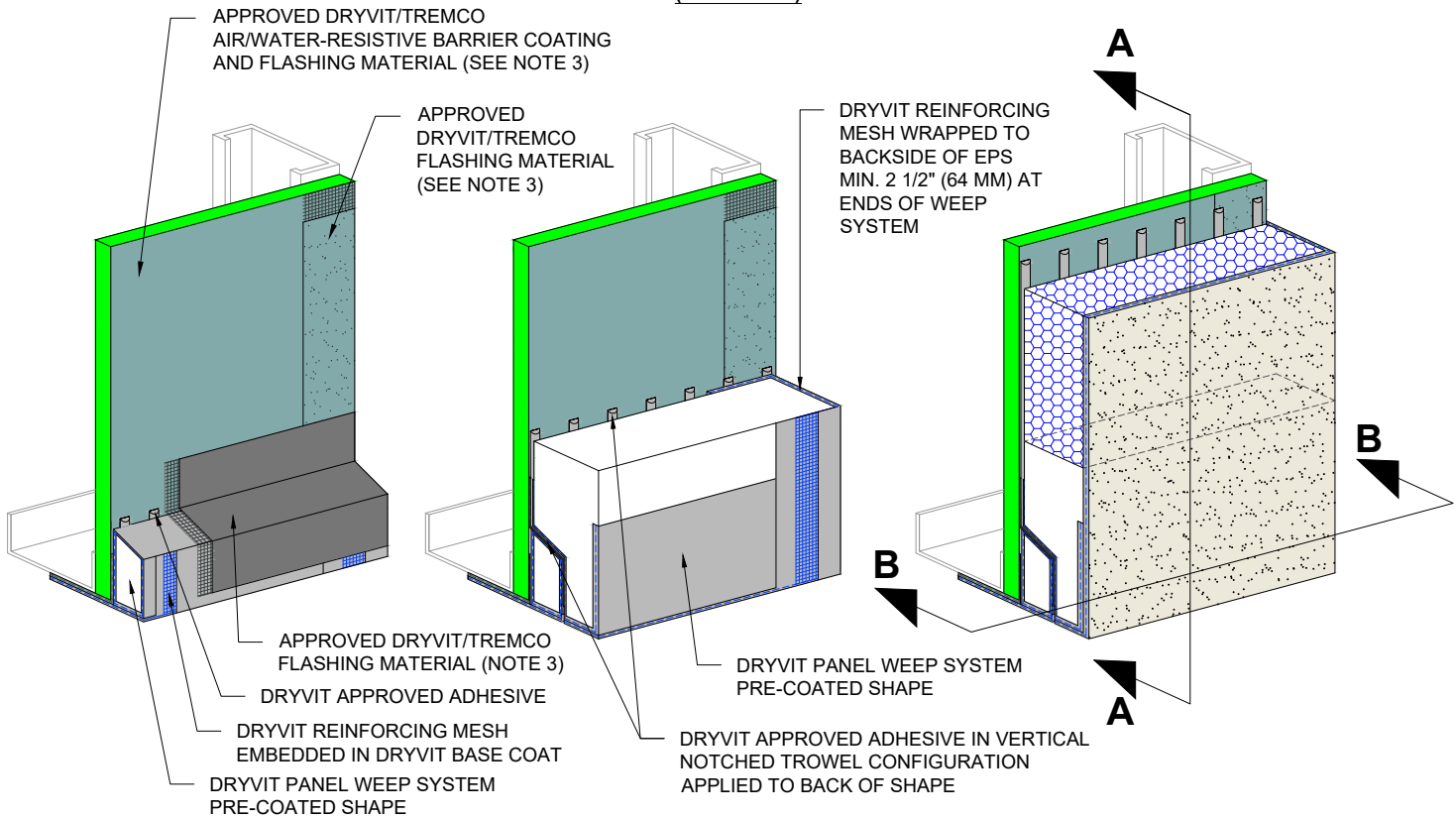
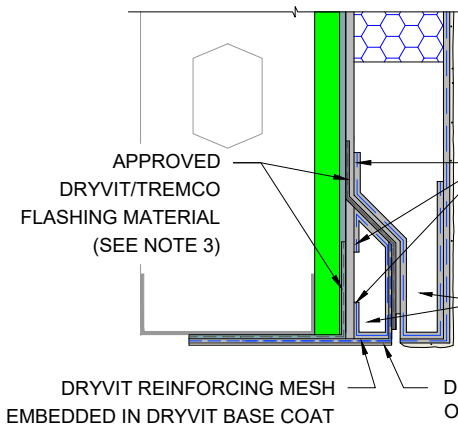


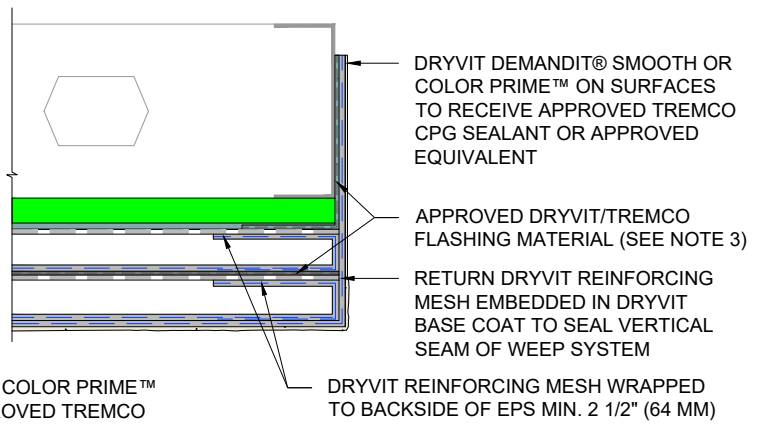
**PATENTED PANEL WEEP SYSTEM OPTION
INSTALLATION STEPS
(SEE NOTE 5)**



SECTION A-A



SECTION B-B





NOTES:

1. DRYVIT RECOMMENDS THAT GROUND FLOOR APPLICATIONS AND ALL FACADES EXPOSED TO ABNORMAL STRESS, HIGH TRAFFIC, OR DELIBERATE IMPACT HAVE THE BASE COAT REINFORCED WITH PANZER® MESH PRIOR TO STANDARD OR STANDARD PLUS MESH. LOCATION OF HIGH IMPACT ZONES SHOULD BE INDICATED ON CONTRACT DRAWINGS.
2. LIGHT GAUGE STEEL FRAME SHALL BE DESIGNED FOR SPECIFIC PROJECT LOADS AND CONDITIONS TO MEET LOCAL BUILDING CODES BY LICENSED ENGINEER.
3. REFER TO APPLICATION INSTRUCTIONS FOR THE APPROVED TREMCO CPG AIR BARRIER SYSTEM SELECTED FOR AWRB AND FLASHING APPLICATION.
4. INSULATION BOARD TO BE MINIMUM 3/4" (19 MM).
5. USAGE LIMITED TO BASE OF PANEL CONDITIONS AND EXCLUDES HEAD CONDITIONS.

U.S. PATENT NO. 10,472,820 B2

This detail is for general informational purposes only. The project design professional determines, in its sole discretion, whether this detail or a functionally equivalent detail is best suited for the project with respect to any architecture, engineering, and design requirements, including any local building code requirements. If this document is not reviewed and the product is not approved for use by a licensed design professional, the customer agrees that the detail may contain substantive flaws requiring correction, and hereby releases Tremco CPG Inc. from any and all liability related to the design and installation of the product. This detail is subject to change without notice. Contact Tremco to ensure you have the most recent version.

Outsulite™ Panel System

 Dryvit Technical Support: 800-556-7752	Detail: Patented Panel Weep System Drainage Option			File Name:	
	Drawn by: EM	Checked by: CW	Scale: NTS	OSL 6MD	
	Revision #: 0	Revised by: NA	Date: 6/27/2024		
 Construction Products Group					