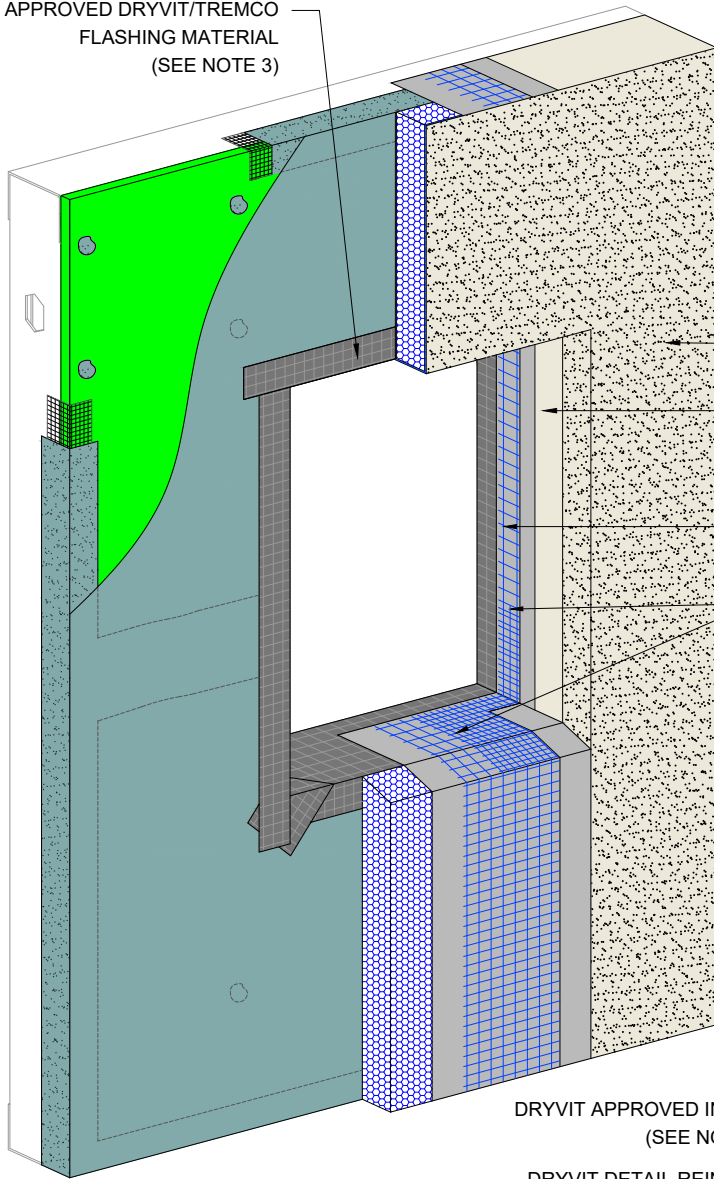


APPROVED DRYVIT/TREMCO
FLASHING MATERIAL
(SEE NOTE 3)



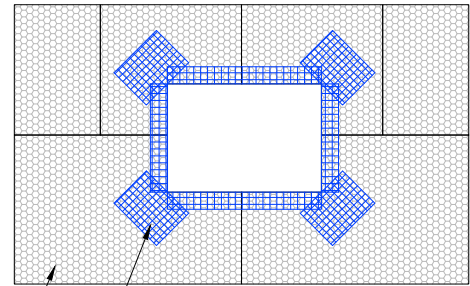
OUTSULITE PANEL (SEE NOTE 2)

DRYVIT DEMANDIT® SMOOTH OR COLOR PRIME™ ON SURFACES TO RECEIVE APPROVED TREMCO CPG SEALANT OR APPROVED EQUIVALENT (SEE NOTE 4)

EXTEND DRYVIT REINFORCING MESH INTO OPENING, 2 1/2" (64 MM) MIN. ONTO FRAMING (SEE NOTE 8)

EXTEND MESH 6" (152 MM) ON SILL AND JAMB, HEAD AND JAMB SIMILAR (SEE NOTES 5 AND 8)

INSULATION BOARD PREPARATION AT WALL PENETRATIONS



DRYVIT APPROVED INSULATION
(SEE NOTES 5 & 7)



DRYVIT DETAIL REINFORCING MESH
9 1/2" (241 MM) X 8" (203 MM)
(TYP.) (SEE NOTE 6)

NOTES:

1. DRYVIT RECOMMENDS THAT GROUND FLOOR APPLICATIONS AND ALL FACADES EXPOSED TO ABNORMAL STRESS, HIGH TRAFFIC, OR DELIBERATE IMPACT HAVE THE BASE COAT REINFORCED WITH PANZER® MESH PRIOR TO STANDARD OR STANDARD PLUS MESH. LOCATION OF HIGH IMPACT ZONES SHOULD BE INDICATED ON CONTRACT DRAWINGS.
2. LIGHT GAUGE STEEL FRAME SHALL BE DESIGNED FOR SPECIFIC PROJECT LOADS AND CONDITIONS TO MEET LOCAL BUILDING CODES BY LICENSED ENGINEER.
3. REFER TO APPLICATION INSTRUCTIONS FOR THE APPROVED TREMCO CPG AIR BARRIER SYSTEM SELECTED FOR AWRB AND FLASHING APPLICATION. SEE OSL-04A THROUGH 04D INSTALLATION OPTIONS.
4. COORDINATE WITH WINDOW SHOP DRAWINGS FOR TERMINATION OF FINISH.
5. LOCATE INSULATION BOARDS SUCH THAT BOARD EDGES DO NOT ALIGN WITH CORNERS OF PENETRATION.
6. APPLY A PIECE OF 9 1/2" (241 MM) X 8" (203 MM) DETAIL REINFORCING MESH DIAGONALLY AT EACH CORNER.
7. DRYVIT APPROVED PRE-BASED L-SHAPED CORNER BOARD IS AN ACCEPTABLE ALTERNATE.
8. HEAD AND JAMB SIMILAR FOR BARRIER SYSTEM. FOR DRAINAGE SYSTEM OPTIONS BACK WRAP DRYVIT REINFORCING MESH 2.5" (64 MM MIN) AT HEAD AS PER DETAIL OSL-10MD.

This detail is for general informational purposes only. The project design professional determines, in its sole discretion, whether this detail or a functionally equivalent detail is best suited for the project with respect to any architecture, engineering, and design requirements, including any local building code requirements. If this document is not reviewed and the product is not approved for use by a licensed design professional, the customer agrees that the detail may contain substantive flaws requiring correction, and hereby releases Tremco CPG Inc. from any and all liability related to the design and installation of the product. This detail is subject to change without notice. Contact Tremco to ensure you have the most recent version.

Outsulite™ Panel System

 Dryvit Technical Support: 800-556-7752	Detail: Termination at Openings			File Name:	
	Drawn by: EM	Checked by: CW	Scale: NTS	OSL 7	
	Revision #: 0	Revised by: NA	Date: 6/27/2024		
<small>www.tremcocpg.com</small>			 Construction Products Group		