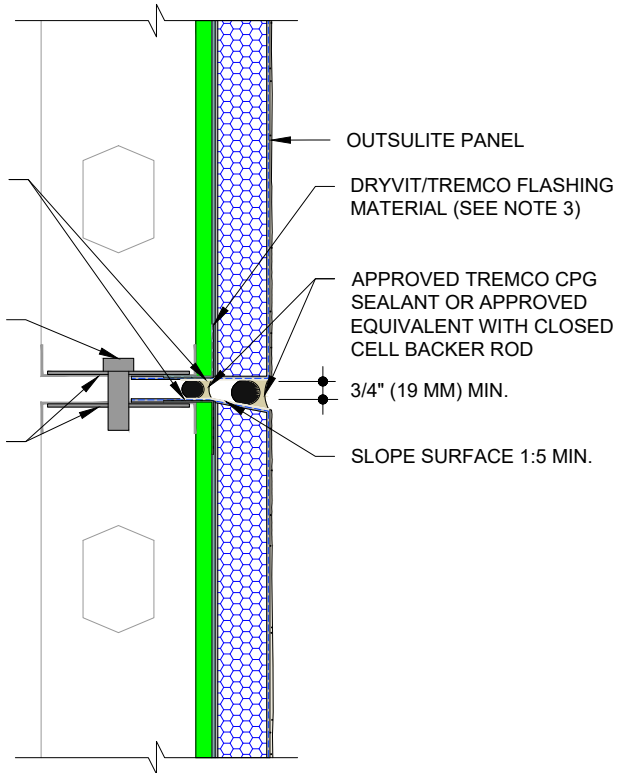


DRYVIT DEMANDIT®
SMOOTH OR COLOR
PRIME™ ON SURFACES
TO RECEIVE SEALANT
(SEE NOTE 2)

PANEL TO PANEL SLIP
JOINT AS PER DESIGN
(SEE NOTE 4)

PLATE WELDED OR
SCREWED TO
TRACK





NOTES:

1. DRYVIT RECOMMENDS THAT GROUND FLOOR APPLICATIONS AND ALL FACADES EXPOSED TO ABNORMAL STRESS, HIGH TRAFFIC, OR DELIBERATE IMPACT HAVE THE BASE COAT REINFORCED WITH PANZER® MESH PRIOR TO STANDARD OR STANDARD PLUS MESH. LOCATION OF HIGH IMPACT ZONES SHOULD BE INDICATED ON CONTRACT DRAWINGS.
2. LIGHT GAUGE STEEL FRAME SHALL BE DESIGNED FOR SPECIFIC PROJECT LOADS AND CONDITIONS TO MEET LOCAL BUILDING CODES BY LICENSED ENGINEER.
3. REFER TO APPLICATION INSTRUCTIONS FOR THE APPROVED TREMCO CPG AIR BARRIER SYSTEM SELECTED FOR AWRB AND FLASHING APPLICATION.
4. PANEL JOINT LOCATIONS AS PER APPROVED SHOP DRAWINGS.

This detail is for general informational purposes only. The project design professional determines, in its sole discretion, whether this detail or a functionally equivalent detail is best suited for the project with respect to any architecture, engineering, and design requirements, including any local building code requirements. If this document is not reviewed and the product is not approved for use by a licensed design professional, the customer agrees that the detail may contain substantive flaws requiring correction, and hereby releases Tremco CPG Inc. from any and all liability related to the design and installation of the product. This detail is subject to change without notice. Contact Tremco to ensure you have the most recent version.

Outsulite™ Panel System

 Dryvit Technical Support: 800-556-7752	Detail: Horizontal Panel Connection			File Name:	 Construction Products Group
	Drawn by: EM	Checked by: CW	Scale: NTS	OSL 11	
	Revision #: 0	Revised by: NA	Date: 6/27/2024		
www.tremcocpg.com					