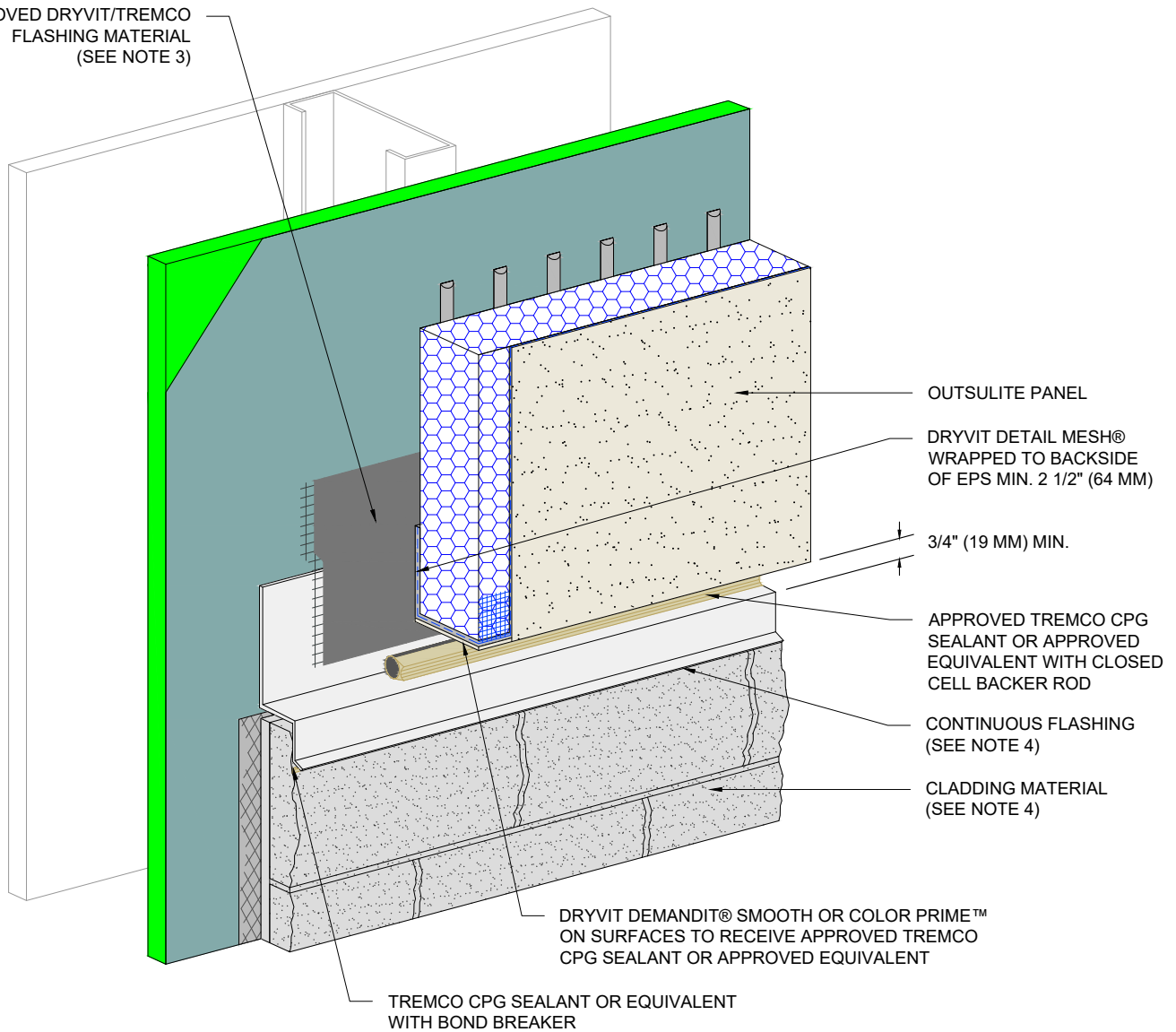


APPROVED DRYVIT/TREMCO FLASHING MATERIAL (SEE NOTE 3)




NOTES:

1. DRYVIT RECOMMENDS THAT GROUND FLOOR APPLICATIONS AND ALL FACADES EXPOSED TO ABNORMAL STRESS, HIGH TRAFFIC, OR DELIBERATE IMPACT HAVE THE BASE COAT REINFORCED WITH PANZER® MESH PRIOR TO STANDARD OR STANDARD PLUS MESH. LOCATION OF HIGH IMPACT ZONES SHOULD BE INDICATED ON CONTRACT DRAWINGS.
2. LIGHT GAUGE STEEL FRAME SHALL BE DESIGNED FOR SPECIFIC PROJECT LOADS AND CONDITIONS TO MEET LOCAL BUILDING CODES BY LICENSED ENGINEER.
3. REFER TO APPLICATION INSTRUCTIONS FOR THE APPROVED TREMCO CPG AIR BARRIER SYSTEM SELECTED FOR AWRB AND FLASHING APPLICATION.
4. FLASHING AND OTHER CLADDING MATERIALS PER SHOP DRAWINGS.

This detail is for general informational purposes, only. The project design professional determines, in its sole discretion, whether this detail or a functionally equivalent detail is best suited for the project with respect to any architecture, engineering, and design requirements, including any local building code requirements. If this document is not reviewed and the product is not approved for use by a licensed design professional, the customer agrees that the detail may contain substantive flaws requiring correction, and hereby releases Tremco CPG Inc. from any and all liability related to the design and installation of the product. This detail is subject to change without notice. Contact Tremco to ensure you have the most recent version.

Outsulite™ Panel System

 Dryvit Technical Support: 800-556-7752	Detail: Termination at Other Cladding			File Name:	
	Drawn by: EM	Checked by: CW	Scale: NTS	OSL 20	
	Revision #: 0	Revised by: NA	Date: 6/27/2024		
www.tremcocpg.com			 Construction Products Group		