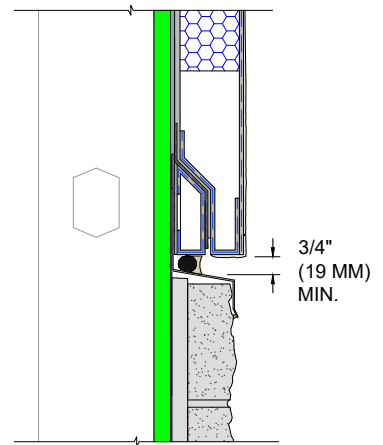


APPROVED DRYVIT/TREMCO FLASHING MATERIAL (SEE NOTE 3)

PATENTED DRYVIT PANEL WEEP SYSTEM OPTION

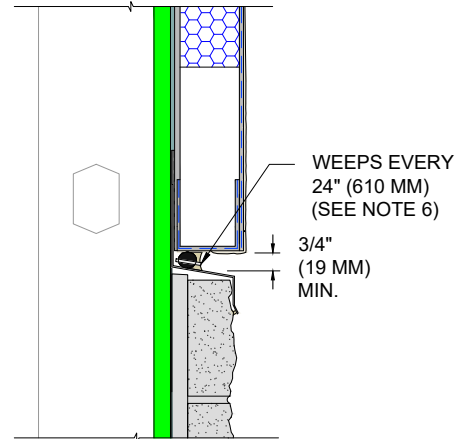


OUTSULITE PANEL

3/4" (19 MM) MIN.

DRYVIT PANEL WEEP SYSTEM, PATENTED PER DETAIL OSL - 06MD (SEE NOTE 5)

DRYVIT PRE-COATED STARTER BOARD WITH WEEPS OPTION



CLADDING MATERIAL (SEE NOTE 4)

WEEPS EVERY 24" (610 MM) (SEE NOTE 6)

3/4" (19 MM) MIN.

DRYVIT DEMANDIT® SMOOTH OR COLOR PRIME™ ON SURFACES TO RECEIVE SEALANT

APPROVED TREMCO CPG SEALANT OR APPROVED EQUIVALENT WITH CLOSED CELL BACKER ROD

TREMCO CPG SEALANT OR EQUIVALENT WITH BOND BREAKER

CONTINUOUS FLASHING (SEE NOTE 4)

NOTES:

1. DRYVIT RECOMMENDS THAT GROUND FLOOR APPLICATIONS AND ALL FACADES EXPOSED TO ABNORMAL STRESS, HIGH TRAFFIC, OR DELIBERATE IMPACT HAVE THE BASE COAT REINFORCED WITH PANZER® MESH PRIOR TO STANDARD OR STANDARD PLUS MESH. LOCATION OF HIGH IMPACT ZONES SHOULD BE INDICATED ON CONTRACT DRAWINGS.
2. LIGHT GAUGE STEEL FRAME SHALL BE DESIGNED FOR SPECIFIC PROJECT LOADS AND CONDITIONS TO MEET LOCAL BUILDING CODES BY LICENSED ENGINEER.
3. REFER TO APPLICATION INSTRUCTIONS FOR THE APPROVED TREMCO CPG AIR BARRIER SYSTEM SELECTED FOR AWRB AND FLASHING APPLICATION.
4. FLASHING AND OTHER CLADDING MATERIALS PER SHOP DRAWINGS.
5. EPS TO BE MINIMUM 3/4" (19 MM).
6. WEEP TUBE DESIGN PER SPECIFICATION, AS APPLICABLE.

This detail is for general informational purposes only. The project design professional determines, in its sole discretion, whether this detail or a functionally equivalent detail is best suited for the project with respect to any architecture, engineering, and design requirements, including any local building code requirements. If this document is not reviewed and the product is not approved for use by a licensed design professional, the customer agrees that the detail may contain substantive flaws requiring correction, and hereby releases Tremco CPG Inc. from any and all liability related to the design and installation of the product. This detail is subject to change without notice. Contact Tremco to ensure you have the most recent version.

Outsulite™ Panel System

 <p>Dryvit Technical Support: 800-556-7752</p>	Detail: Termination at Other Cladding - Drainage Options			File Name:	 <p>Construction Products Group</p>
	Drawn by: EM	Checked by: CW	Scale: NTS	OSL 20MD	
	Revision #: 0	Revised by: NA	Date: 6/27/2024		