

POWER of ONE

One Building Envelope. One Warranty.
One Powerful System Delivering
Unmatched Protection for Your Building.

Why a Single Source Matters

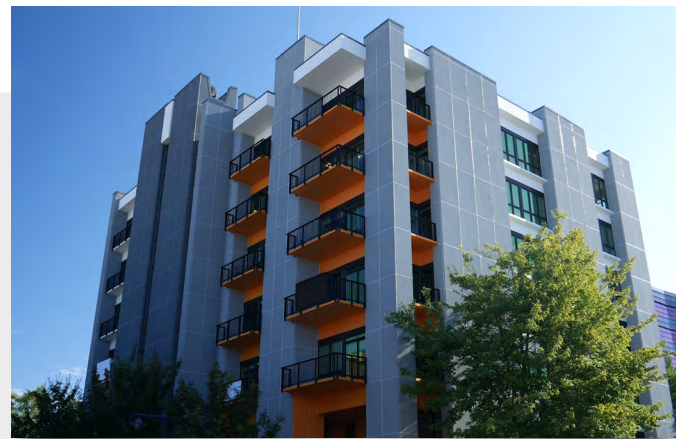
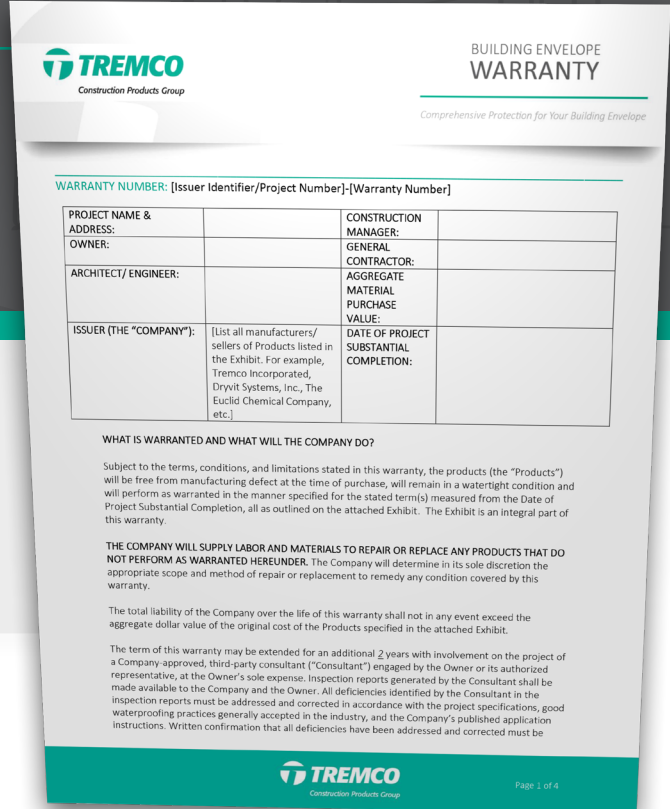
Your property is a major investment, and its building envelope is a critical component. You get one chance to get it right... or spend many years and a lot of money trying to fix it.

Made up of hundreds, even thousands, of components, a building's "envelope" protects interior spaces and occupants from the outside world. That includes shielding against the elements, excessive noise, and providing resistance to other external disturbances.

Why cobble together an envelope with materials from dozens of different suppliers when you can choose a Tremco Construction Products Group (CPG) building envelope, designed and tested to work as one continuous system and warranted together in a single document?

Systems & Services Covered Under a Single Warranty

- Air & Vapor Barriers
- Cladding
- Glazing Systems
- Insulated Concrete Forms
- Sealants & Adhesives
- Traffic Coatings
- Waterproofing



"They were able to give us a comprehensive warranty — covering the entire building — from a single source. That was impossible from anybody else. A great selling point for the owners."

**500 Pacific Ave.
Bremerton, Washington**

Dryvit Air Barriers and Prefabricated Panels
Tremco Traffic Coatings and Sealants



Scan or click to see
the full case study



A COMPREHENSIVE SYSTEM. A SINGLE WARRANTY.

A Tremco CPG building envelope is a comprehensive system, and its components are warranted together in a single warranty document.

We're so confident in the performance of our solutions that if any one or more elements of your Tremco CPG building envelope proves defective, we'll pay for the labor and material to fix it.

Benefits for Building Owners



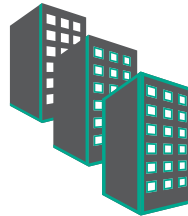
THE MORE TREMCO CPG COMPONENTS, THE MORE PROTECTION

Most individual building component warranties are limited to the dollar value of the material purchased. With a Tremco CPG warranty, the more you single-source from the group, the greater the dollar value of coverage available should you have an issue. That's because your Tremco CPG warranty is worth the aggregate value of all the components purchased from the group – giving you a much larger pool should you have a warranted issue on any one component.



NO FINGER-POINTING AMONG MANUFACTURERS

From the cladding, to the CI, to the air barrier, waterproofing, sealants, coatings and even window flashings and gaskets – if any product of ours is defective, the material, labor and repair is on us.



OPTIONS FOR ANY BUDGET

With our *Good / Better / Best* building envelope systems and corresponding warranties, whatever your project goals, we have proven solutions that will protect your building effectively.



SAFEGUARD YOUR LONG-TERM INVESTMENTS

Systems that offer extended warranty terms protect your investment for years to come. Maintenance and service plans can also find and fix issues before they cause real problems.



ADDED VALUE IF YOU SELL

Your building is simply worth more with a transferrable* Tremco CPG Building Envelope warranty. You're not only selling a warranted structure, but one with reduced life-cycle costs, lower energy consumption, and more.



PEACE OF MIND

When your building is protected with a Tremco CPG building envelope, you don't have to worry. It adds value to your property, and it protects you and future owners for the entire warranty term*.



STREAMLINED WARRANTY SERVICE REQUESTS

One call or one ticket submitted to our online warranty services portal means a prompt response and one step closer to "problem solved."

*Tremco CPG building envelope warranties are transferrable pending express written consent of the company.

To learn how you can get the best envelope and warranty for your building, contact your local Tremco CPG company sales representative. A technical sales rep from any of the Tremco CPG companies can assist.

