



TECHNICAL DATA SHEET

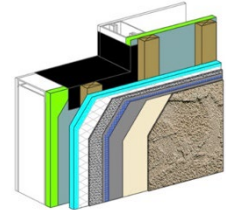
Commercial Cement Plaster 5™

A Rainscreen, Fiberglass Reinforced Portland Cement Plaster With Backstop® NTX™ Air/Water-Resistive Barrier and Fiberglass Mesh Reinforced Leveling Coat
DS816

PRODUCT DESCRIPTION

Commercial Cement Plaster 5 consists of Backstop NTX air/water-resistive barrier, approved paper backed lath, Commercial Cement Plaster (CCP) Base*, fiberglass reinforcing mesh and leveling coat, acrylic primer and an acrylic coating or finish.

*Other approved scratch and brown coats may be acceptable. Consult Dryvit for specifics.



BASIC USES

Commercial Cement Plaster 5 is a durable, exterior cladding intended for use over wood or steel framing and a Dryvit approved sheathing, incorporated into a cavity rainscreen design.

FEATURES & BENEFITS

FEATURE

- Durable
- Water-Resistive
- Cost Effective
- Aesthetic Variety

PROPERTIES

Testing: Complies with ASTM C 1328 and IBC requirements for Portland cement plaster.

Job Conditions: Air and surface temperature for application of CCP Base must be 40 °F (4 °C) or higher and must remain so for a minimum of 24 hours.

Temporary Protection: Must be provided at all times to protect the Backstop NTX, CCP Base, leveling coat, primer and finish applications from damaging effects of precipitation, dirt and job-site contamination.

COMPONENTS

Air/Water-Resistive Barrier Dryvit Backstop NTX: A liquid applied air/water-resistive barrier meeting ICC and ABAA requirements.

Cavity Furring (by others): Shall be installed vertically to provide a minimum 1/2 in (12.7 mm) clear space and be:

1. Preservative treated wood strapping spaced maximum 16 in (406 mm) on-center.
2. Galvanized metal spaced maximum 16 in (406 mm) on-center.

Sheathing Backer (by others): Shall provide adequate support for the application of the lath and CCP Base.

1. Shall be one of the approved substrates as noted in DS823 or:
2. Breather Board: A 3-ply semi-rigid asphaltic board made up of a button-punched fiberglass sheet coated with high-melt asphalt, then faced on each side with asphalt - Kraft building paper.

Lath (by others): Approved paper backed, or other self-furring metal lath shall be galvanized, minimum 2.5 lbs/sq yd (1.4 kg/m²) or 3.4 lbs/yd² (1.9 kg/m²) and comply with ASTM C 841 and C 847; 16 gauge galvanized self-furring welded wire lath (ASTM C 933), minimum 1 1/2 x 17 galvanized woven wire lath (ASTM C 1032); or 3/8 in (9.5 mm) galvanized rib lath. Minimum 2.5 lbs/sq yd (1.4 kg/m²) lath is required for thicknesses of 3/4 in (19 mm) or greater. The specific type is designated by the designer based on project requirements. Lath installation shall conform to ASTM C 1063 and local code requirements.

NOTE: If paper-backed lath is not used, approved slip sheet is required over the Backstop NTX.

Cement Plaster Base: Shall be CCP Base in either sanded or concentrate formula. Refer to DS817 (sanded) or DS818 (concentrate) for complete mixing and application instructions.

Leveling Coat: Shall be Genesis[®], DS417 a 100% acrylic-based liquid which is field mixed with Portland cement, or Genesis[®] DM, DS452 a dry blend, cementitious product which is field mixed with water.

Fiberglass Reinforcing Mesh: Shall be Dryvit Standard, Standard Plus or Intermediate Mesh. A balanced open weave, glass fiber fabric treated for compatibility with CCP 5 components.

Acrylic Primer: Shall be Color Prime™, DS410, Color Prime-W™, DS474 or Primer with Sand™, DS477. Refer to specific product data sheets for complete application instructions.

Acrylic Coating:

Demandit[®] Smooth – integrally colored, smooth exterior wall coating enhanced with proven mildew resistance. See DS400 for complete information.

Weatherlastic[®] Smooth – integrally colored, elastomeric, smooth exterior wall coating enhanced with proven mildew resistance. See DS433 for complete information.

APPLICATION

Commercial Cement Plaster 5 must be applied in accordance with local and national code requirements and ASTM C 926. Refer to Commercial Cement Plaster 5 Specifications, DS823 and Commercial Cement Plaster 5 Details, DS828.

FINISHES

For complete information, please refer to the product data sheets.

Acrylic Finish

- **DPR** – flexible textured exterior wall finish with integral color. Available in 5 primary textures: Quarzputz[®], Sandblast[®], Sandpebble[®], Sandpebble Fine™ and Freestyle[®], DS416.
- **PMR™** – flexible textured exterior wall finish with integral color and enhanced with additional mildew protection, DS490.
- **HDP™** – flexible textured exterior wall finish with integral color and optimized for hydrophobic performance, DS811.
- **E™ Finish** – lightweight, highly flexible textured exterior wall finish with integral color. Available in 3 textures: Quarzputz E, Sandpebble E, and Sandpebble Fine E, DS468.

Weatherlastic – elastomeric textured exterior wall finish with integral color. Available in 5 textures: Adobe, Quarzputz, Sandpebble, Sandpebble Fine and Mojave, DS418.

SPECIALTY FINISHES

- **Ameristone™** - Multi-colored quartz aggregate with a flamed granite appearance, DS434.
- **Stone Mist[®]** - Ceramically colored quartz aggregate, DS420.
- **Custom Brick™** - Acrylic polymer-based finish used with a proprietary template to create the look of brick, DS227.
- **TerraNeo[®]** - Acrylic-based finish with large mica chips and multi-colored quartz aggregates, DS481.
- **Limestone™** - A premixed, 100% acrylic-based finish designed to replicate the appearance of limestone blocks, DS472.
- **Finesse™** - A Smooth 100% acrylic-based dirt pickup resistance finish, DS859.

TECHNICAL AND FIELD SERVICES

Available on request.

Information contained in this product sheet conforms to the standard detail recommendations and specifications for the installation of Dryvit products as of the date of publication of this document and is presented in good faith. Dryvit assumes no liability, expressed or implied, as to the architecture, engineering or workmanship of any project. To ensure that you are using the latest, most complete information, contact Dryvit.

For more information on Dryvit or Continuous Insulation, [click here](#).

Printed in USA. Issued 1.1.2022

©Dryvit 2022

DS816

Tremco Construction Products Group (CPG) brings together the Commercial Sealants & Waterproofing and Roofing & Building Maintenance divisions of Tremco CPG Inc.; Dryvit and Willseal brands; Nudura Inc.; Prebuck LLC; Tremco Barrier Solutions, Inc.; Weatherproofing Technologies, Inc.; Weatherproofing Technologies Canada, Inc.; and Pure Air Control Services, Inc.



dryvit.com | 800.556.7752



Construction Products Group

3735 Green Rd. | Beachwood, OH 44122
800.321.7906 | tremcocpg.com