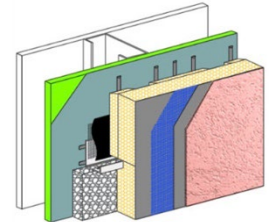


### PRODUCT DESCRIPTION

Infinity is the ultimate in an exterior insulation and finish system, offering the most comprehensive built-in method for eliminating the potential for water entering a building. Dryvit Systems, Inc. has accomplished what architects and building owners have always sought – an exterior wall system that is both designed to prevent water intrusion and to deal with incidental moisture that may occur. Studies show that, for moisture penetration to occur there must both be an opening for water and a force to drive the water through that opening. Over the life of a building, without proper maintenance and care, water will find a passage through imperfect seals at joints and around openings in the walls. This is true for all types of cladding, including brick, stone, aluminum and concrete. Dryvit meets the challenge with Infinity, a patented wall system with several layers of built-in protection against water intrusion.



### FEATURES & BENEFITS

#### FEATURE

- Specially Formulated Base Coat and Mesh
- Pressure Equalization Technology

### A TOTAL SYSTEM

Infinity is unlike any other wall system. It is a proven assembly that incorporates a cavity wall, an air barrier and pressure equalized rainscreen technology into one system – a first for Dryvit and a first for the industry. And, because water penetration has the greatest likelihood of occurring primarily at the material intersections and sealants of a building, Infinity addresses two of the most critical components of any wall assembly - the sheathing and the sealant. When you specify Infinity, you can include Georgia-Pacific's DensGlass® Gold sheathing and superior silicone sealants from Dow Corning and have them warranted by Dryvit.

### A TOTAL PROGRAM

Infinity is more than a system. It is a program, too. Infinity is supported by quality assurance methods unparalleled in the EIFS industry. Specifying Infinity activates Dryvit's QMP (Quality Management Program), which helps ensure quality standards are maintained through all phases of design and installation. Infinity may only be installed by a pre-qualified QMP contractor\*. In addition, Dryvit requires that this work be monitored by a third party inspector of the owner's choice. Project-specific interaction between the architect and Dryvit's technical staff is always available upon request.

\*Dryvit does not warrant or guarantee the workmanship by the QMP contractor.

### SYSTEM COMPONENTS

**The Inner Layer:** The inner layer starts with DensGlass Gold or a recommended sheathing properly attached to the framing. Next, sheathing board joints are treated with specially designed grid tape, and a continuous air/water-resistive barrier is applied to the substrate. This barrier – a key component in the Infinity concept is extended with rubberized flashing tape to tie into adjacent materials such as windows, door openings and other through-the-wall elements. The result is an air and watertight membrane – the entire inner layer of the Infinity System.

**The Cavity:** The cavity consists of Dryvit's patented EPS insulation board, creating a layer of continuous insulation, another key component of the pressure-equalization function of the system. The Infinity EPS board also provides a thermal barrier and drainage channels that capture, control and direct any incidental water out of the system.

**The Outer Layer:** This Infinity System outer layer is known as the rainscreen or lamina. The rainscreen consists of a flexible base coat, high alkali-resistant reinforcing mesh and a superior elastomeric finish, and offers protection for the inner layer and cavity components. The Infnitex® finish boasts Dryvit's exclusive PMR™ (Proven Mildew Resistant) and DPR (Dirt Pickup Resistant) formulation. Exterior walls look and stay cleaner and brighter with this technology. The final element is a Dow Corning low modulus silicone or other approved sealant. Properly installed and maintained, the sealant provides watertight performance at intersections, transitions and joints and demonstrates superior weather durability.

---

## ENGINEERING SUPPORT

The Quality Management Program begins with a format plan review on request. Dryvit technicians can also assist with critical details, such as window transitions, parapets, roof tie-ins and system penetrations. A water vapor transmission analysis may be recommended as well as a review of "impact zones" and suggestions for appropriate reinforcing mesh.

---

## DESIGN FREEDOM

With Infinity, weather conditions do not hamper design freedom. Like all Dryvit systems, Infinity is compatible with nearly any classic or contemporary design. In fact, the ease with which you can construct sculpted contours, cornices, arches, pediments and columns gives it yet another advantage over all other cladding materials. If it can be imagined, Infinity can make it real.

---

## PRESSURE EQUALIZATION TECHNOLOGY... HARNESSING THE LAWS OF PHYSICS

When the wind blows, a building can experience pressure differences between the cavity and exterior walls. Building diagnostic experts acknowledge that the problem of water infiltration is primarily a function of these pressure differentials. Using pressure-equalized and rainscreen technology, the Infinity System eliminates the potential for water infiltration by neutralizing the difference between the applied wind pressure (outside) and the cavity pressure. Equalization is achieved when the cavity pressure is equal in magnitude and opposite in direction to the applied wind pressure. The more rapidly this pressure is equalized through the wall, the more effective the system is in keeping out water.

---

## WEATHER-WISE AND WARRANTED

The Infinity System is a wall system package that includes all components listed above. The entire system is backed by Dryvit's 12-year single-source "through-the-wall" warranty against water intrusion which, when used, includes the DensGlass Gold sheathing and Dow Corning silicone sealants. Consult Dryvit Systems, Inc. for full details.

---

## RESHAPING EIFS TECHNOLOGY

Since 1969, building owners, architects and contractors have relied on Dryvit for innovative, cost-effective and energy-efficient insulation and finish systems. Dryvit systems have been installed and continue to perform on 400,000-plus projects worldwide. More than a billion square feet of Dryvit materials protect and beautify commercial, institutional, industrial and residential structures in both new and retrofit applications.

Dryvit is an ISO 9001:2008 and ISO 14001:2004 certified company. The ISO 9001:2008 and 14001:2004 standards have been established worldwide as a common denominator for product consistency and excellence. Obtaining ISO 9001:2008 and ISO 14001:2004 certification helps to identify Dryvit as the recognized leader in EIFS technology. With leadership comes an obligation and commitment to research and development. The Infinity System is a result of Dryvit's commitment to continuous improvement. By developing Infinity, Dryvit has pioneered a new generation of EIFS technology. Infinity represents an unmatched level of performance in a full wall system that sets the new industry standard for design integrity and longevity and is backed by a single-source warranty for all components. See how the Infinity System and the growing Dryvit family of products can enhance your next project. Our Technical Services group will be happy to assist you.

Information contained in this product sheet conforms to the standard detail recommendations and specifications for the installation of Dryvit products as of the date of publication of this document and is presented in good faith. Dryvit assumes no liability, expressed or implied, as to the architecture, engineering or workmanship of any project. To ensure that you are using the latest, most complete information, contact Dryvit.

For more information on Dryvit or Continuous Insulation, [click here](#).

Printed in USA. Issued 1.1.2022  
©Dryvit 2022  
DS224

Tremco Construction Products Group (CPG) brings together the Commercial Sealants & Waterproofing and Roofing & Building Maintenance divisions of Tremco CPG Inc.; Dryvit and Willseal brands; Nudura Inc.; Prebuck LLC; Tremco Barrier Solutions, Inc.; Weatherproofing Technologies, Inc.; Weatherproofing Technologies Canada, Inc.; and Pure Air Control Services, Inc.



[dryvit.com](http://dryvit.com) | 800.556.7752



Construction Products Group

3735 Green Rd. | Beachwood, OH 44122  
800.321.7906 | [tremcocpg.com](http://tremcocpg.com)