

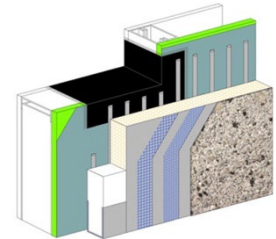


TECHNICAL DATA SHEET

Outsulation® HDCI™
A Highly Durable Exterior Cladding
System with Continuous Insulation
DS863

SUMMARY

Dryvit offers a family of performance-based systems that allows architects and owners to meet the specific demands of today's buildings and associated energy codes, including continuous insulation and an air/water-resistive barrier. Dryvit's Outsulation Systems have been installed on over 450,000 buildings worldwide, in all climate zones. Over the past 50 years, the Outsulation concept has grown into a family of related systems, each building upon the other to achieve specific performance goals.



FEATURES & BENEFITS

FEATURES

- Warrantied Puncture Resistance
- Continuous Insulation (CI)
- Integrated Air and Water-Resistive Barrier
- Critical Design Interface
- NFPA 285 Tested

OUTSULATION HDCI SYSTEM COMPONENTS

1. Dryvit Air Barrier/Water-Resistive Membrane
2. Dryvit Grid Tape™
3. Dryvit AquaFlash® System Transition Membrane
4. Dryvit Drainage Strip™
5. Dryvit Adhesive/Basecoat
6. EPS Insulation Boards
7. Dryvit Panzer® 20 Reinforcing Mesh
8. Dryvit Corner mesh
9. Dryvit Standard Reinforcing Mesh
10. Dryvit Finish

DURABLE AND IMPACT RESISTANT

Outsulation HDCI provides a durable and damage resistant cladding system adaptable to all building types. Using the strongest available reinforcing mesh combination, Outsulation HDCI provides a cladding that minimizes potential for damage from impact and is combined with a comprehensive warranty to the owner that includes repair of areas that may become damaged – contact Dryvit Systems Inc. for full details.

CLADDING, AIR BARRIER, WATER-RESISTIVE BARRIER AND CONTINUOUS INSULATION

Most jurisdictions in the U.S. now require that exterior walls include an air barrier, a water-resistive barrier, as well as continuous insulation. Outsulation HDCI incorporates all these necessary components required to complete the exterior wall assembly in a single product, supplied by a single manufacturer and installed by a single trade. This makes the product easy to specify, detail and install, eliminating complexities involved with multi-component assemblies.

DRYVIT... PROVEN FOR OVER 50 YEARS

Dryvit Systems, Inc. is an ISO 9001:2015 and ISO 14001:2015 certified company. ISO standards have been established worldwide as a common denominator for product quality and excellence. Dryvit is the recognized leader in construction technology. With leadership comes an obligation and commitment to research and development. The Outsulation HDCI System is an example of our determination to continuously evaluate market demands and develop products and programs to meet them.

WARRANTY

Dryvit Systems, Inc. will provide a written limited materials warranty against defective material upon written request. Additionally, for wall surfaces using the Outsulation HDCI System, Dryvit agrees to repair damage resulting from impact during the warranty period. Some exclusions will apply, please contact Dryvit Systems Inc. for complete details. Workmanship is not warranted by Dryvit.

Information contained in this product sheet conforms to the standard detail recommendations and specifications for the installation of Dryvit products as of the date of publication of this document and is presented in good faith. Dryvit assumes no liability, expressed or implied, as to the architecture, engineering or workmanship of any project. To ensure that you are using the latest, most complete information, contact Dryvit.

For more information on Dryvit or Continuous Insulation, [click here](#).

Printed in USA. Issued 1.1.2022

©Dryvit 2022

DS863

Tremco Construction Products Group (CPG) brings together the Commercial Sealants & Waterproofing and Roofing & Building Maintenance divisions of Tremco CPG Inc.; Dryvit and Willseal brands; Nudura Inc.; Prebuck LLC; Tremco Barrier Solutions, Inc.; Weatherproofing Technologies, Inc.; Weatherproofing Technologies Canada, Inc.; and Pure Air Control Services, Inc.



dryvit.com | 800.556.7752



Construction Products Group

3735 Green Rd. | Beachwood, OH 44122
800.321.7906 | tremcocpg.com