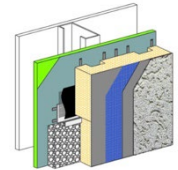


### PRODUCT DESCRIPTION

Taking the worry out of the wall by using an advanced design concept - Moisture Drainage For Even Better Wall Performance. Outsulation MD is part of Dryvit's family of high-performance exterior insulation and finish systems for commercial use. Since 1969, architects and owners have looked to Dryvit for excellence in EIFS. For over 50 years, the barrier style, Class PB, Outsulation® System has remained essentially as originally designed and has been installed on over 500,000 buildings worldwide. Today, there is increased demand for a wall system to be able to drain away incidental moisture. Dryvit responds to this demand with Outsulation MD.



### FEATURES & BENEFITS

- Moisture Drainage
- High-Performance Exterior Insulation
- Reinforced Base Coat
- Specially-Designed, Grooved EPS Board
- Drainage Track and Vent Assembly
- Air/Water-Resistive Barrier
- Waterproof Flashing Material
- Warranty

### COMPONENTS - LOOK INSIDE THE OUTSULATION MD SYSTEM

1. Dryvit/Tremco Approved Water-Resistive Membrane and Air Barrier (available in Texture, Smooth or Spray)
2. Dryvit Grid Tape™
3. Dryvit/Tremco Approved Flashing System or Flashing Tape™ and Surface Conditioner™
4. Dryvit Vent Assembly™ (not shown)
5. Dryvit Track and Vent Track™ (not shown)
6. Dryvit AP Adhesive™ to Adhere Dryvit Track and Vent Track (not shown)
7. Dryvit Adhesive in Vertical Notched Trowel Configuration (not shown)
8. Insulation Board with Channels, creating a layer of continuous insulation
9. Dryvit Reinforced Base Coat
10. Dryvit Finish

### MOISTURE DRAINAGE TECHNOLOGY

Outsulation MD offers the most comprehensive, easy-to-install drainage system available for commercial use today. It provides three lines of defense against water intrusion. The first is Dryvit's time-tested combination of reinforced base coat and finish. The second is our specially-designed, grooved EPS with drainage track and vent assembly, providing continuous insulation to meet local Energy Codes. The third is a Dryvit/Tremco approved water-resistive barrier. A waterproof flashing material or flashing tape is also used to protect sills of wall openings (such as windows). A compatible sealant must be utilized at all system terminations.

### WHY BACKSTOP NT?

The drainage channels present in Outsulation MD will evacuate "incidental" water that, for a variety of reasons, may find its way behind the EPS insulation. Backstop NT prevents this moisture from coming into contact with the substrate, as it drains. Classified in Canada as a Type III air barrier, it is a specially formulated, flexible, polymer-based, noncementitious coating that has proven itself to be a watertight membrane. Backstop NT is an essential element of the Outsulation MD System. Full details regarding the performance of Backstop NT are available upon request from Dryvit.

---

## WARRANTY

Dryvit Systems, Inc. shall provide a written limited materials warranty upon written request. Dryvit shall make no other warranties, expressed or implied. Dryvit does not warrant workmanship. Full details are available from Dryvit Systems, Inc.

Information contained in this product sheet conforms to the standard detail recommendations and specifications for the installation of Dryvit products as of the date of publication of this document and is presented in good faith. Dryvit assumes no liability, expressed or implied, as to the architecture, engineering or workmanship of any project. To ensure that you are using the latest, most complete information, contact Dryvit.

For more information on Dryvit or Continuous Insulation, [click here](#).

Printed in USA. Issued 1.1.2022  
©Dryvit 2022  
DSs443

Tremco Construction Products Group (CPG) brings together the Commercial Sealants & Waterproofing and Roofing & Building Maintenance divisions of Tremco CPG Inc.; Dryvit and Willseal brands; Nudura Inc.; Prebuck LLC; Tremco Barrier Solutions, Inc.; Weatherproofing Technologies, Inc.; Weatherproofing Technologies Canada, Inc.; and Pure Air Control Services, Inc.



[dryvit.com](http://dryvit.com) | 800.556.7752



Construction Products Group

3735 Green Rd. | Beachwood, OH 44122  
800.321.7906 | [tremcocpg.com](http://tremcocpg.com)