



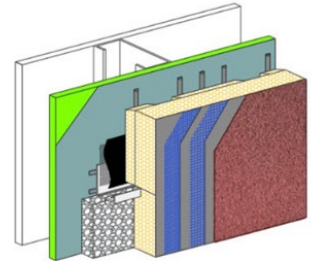
TECHNICAL DATA SHEET

Outsulation® PE System™

A Pressure-Equalized Rainscreen Exterior Insulation and Finish System With Moisture Drainage That Incorporates Continuous Insulation and An Air/Water-Resistive Barrier
DS843

SUMMARY

Dryvit offers a family of performance-based systems that allow architects and owners to meet the specific demands of today's energy codes, such as continuous insulation and an air/water-resistive barrier. Outsulation PE is a part of Dryvit's family of high-performance, engineered, exterior insulation and finish systems and features a pressure-equalized rainscreen concept.



FEATURES & BENEFITS

- Pressure-Equalized Rainscreen Technology
- Moisture Drainage Technology
- Liquid-Applied Air/Water Resistive Barrier

COMPONENTS - LOOK INSIDE THE OUTSULATION PE SYSTEM

1. Dryvit Liquid applied Air/Water-Resistive Barrier
2. Dryvit Grid Tape™
3. Dryvit AquaFlash® System or Flashing Tape™ and Surface Conditioner™
4. Dryvit Vent Assembly™
5. Dryvit Track and Vent Track™
6. Dryvit AP Adhesive™ to adhere Dryvit Track and Vent Track
7. Dryvit Adhesive in Vertical Notched Trowel Configuration
8. Insulation Board with Bevels and Grooves, creating a layer of continuous insulation
9. Insulation Board Closure Blocks
10. Dryvit Reinforced Base Coat
11. Dryvit Finish

PRESSURE-EQUALIZED RAINSCREEN TECHNOLOGY

Outsulation PE incorporates the concept of Pressure Equalization to allow the interlocking cavity in back of the cladding to pressurize during a wind-driven rain event. This eliminates any pressure differential that would draw water into the cavity from a breach in the outside surface. By removing the driving force, the bulk of water will simply flow down the outside wall surface. The inclusion of an air barrier assembly will also stop air infiltration through the wall assembly, improving interior comfort as well as thermal performance.

MOISTURE DRAINAGE TECHNOLOGY

Outsulation PE offers the most comprehensive, easy-to-install drainage system available for commercial use today. This system utilizes a combination of vertical grooves in the EPS insulation, as well as use of an adhesive to create vertical channels, specifically designed to allow any incidental water that enters the cavity behind the insulation board to flow down and to be directed to specific exit points. By incorporating an engineered drainage path within the cladding, termination details are greatly simplified.

LIQUID-APPLIED AIR/WATER RESISTIVE BARRIER

Dryvit's liquid applied air and water-resistive barrier is available in a cementitious (Backstop® DMS) and noncementitious (Backstop® NT™ and Backstop® NT™-VB) formula. It is applied as a continuous membrane over the substrate providing a barrier to both air as well as moisture. Use of Dryvit's liquid barrier allows for adhesive application of the insulation board thus eliminating penetrations in the barrier from fasteners. Dryvit's Backstop NT meets all Air Barrier Association of America (AABA) requirements for air barriers, International Building Code requirements for water-resistive barriers, and is available in either a Type 1 or Type 3 vapor barrier version.

WARRANTY

Dryvit. shall provide a written limited materials warranty upon written request. Dryvit shall make no other warranties, expressed or implied. Dryvit does not warrant workmanship. Full details are available from Dryvit.

Information contained in this product sheet conforms to the standard detail recommendations and specifications for the installation of Dryvit products as of the date of publication of this document and is presented in good faith. Dryvit assumes no liability, expressed or implied, as to the architecture, engineering or workmanship of any project. To ensure that you are using the latest, most complete information, contact Dryvit.

For more information on Dryvit or Continuous Insulation, [click here](#).

Printed in USA. Issued 1.1.2022
©Dryvit 2022
DS843

Tremco Construction Products Group (CPG) brings together the Commercial Sealants & Waterproofing and Roofing & Building Maintenance divisions of Tremco CPG Inc.; Dryvit and Willseal brands; Nudura Inc.; Prebuck LLC; Tremco Barrier Solutions, Inc.; Weatherproofing Technologies, Inc.; Weatherproofing Technologies Canada, Inc.; and Pure Air Control Services, Inc.



dryvit.com | 800.556.7752



Construction Products Group

3735 Green Rd. | Beachwood, OH 44122
800.321.7906 | tremcocpg.com