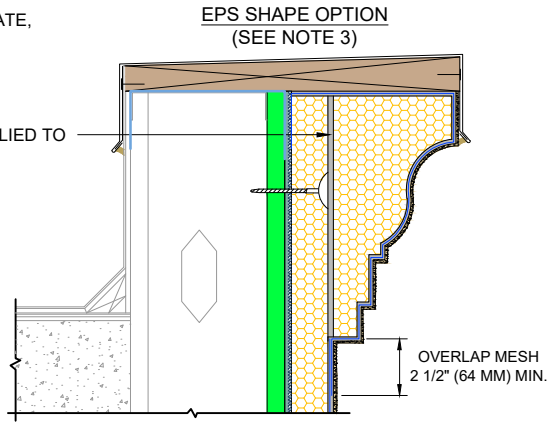


NOTE:

1. DRYVIT RECOMMENDS THAT GROUND FLOOR APPLICATIONS AND ALL FACADES EXPOSED TO ABNORMAL STRESS, HIGH TRAFFIC, OR DELIBERATE IMPACT HAVE THE BASE COAT REINFORCED WITH PANZER® MESH PRIOR TO STANDARD OR STANDARD PLUS MESH. LOCATION OF HIGH IMPACT ZONES SHOULD BE INDICATED ON CONTRACT DRAWINGS.
2. DRYVIT AQUAFASH® SYSTEM MAY BE USED IN LIEU OF TREMCO EXOAIR 110AT FOR SYSTEM 4.
3. MAXIMUM EPS INSULATION THICKNESS IS DICTATED BY LOCAL CODE AUTHORITY AND APPLICABLE TESTING. REFER TO EVALUATION REPORTS FOR ANY LIMITATIONS TO EPS THICKNESS.
4. DRYVIT GENESIS® OR GENESIS DM BASE COAT IS REQUIRED FOR MECHANICALLY FASTENED SYSTEMS 1-3.
5. FASTENERS ARE NOT REQUIRED FOR SYSTEMS 4 OR 5.



The architecture, engineering, and design of the project using the Dryvit and Tremco products are the responsibility of the project's design professional. All products and systems must comply with local building codes and standards. This detail is for general information and guidance only and Dryvit and Tremco specifically disclaims any liability for the use of this detail. The project design professional determines, in its sole discretion, whether this detail or a functionally equivalent detail is best suited for the project. This detail is subject to change without notice. Contact Dryvit and Tremco to ensure you have the most recent version.

Outsulation® RMD System™

 <p>Dryvit Technical Support: 800-556-7752</p>	Detail: Termination at Parapet - Cap Flashing				File Name:		 <p>Construction Products Group</p>
	Drawn by: HDE	Checked by: CS	Scale: NTS	Date: 5/19/2023	O-RMD 22		
www.tremcocpg.com							