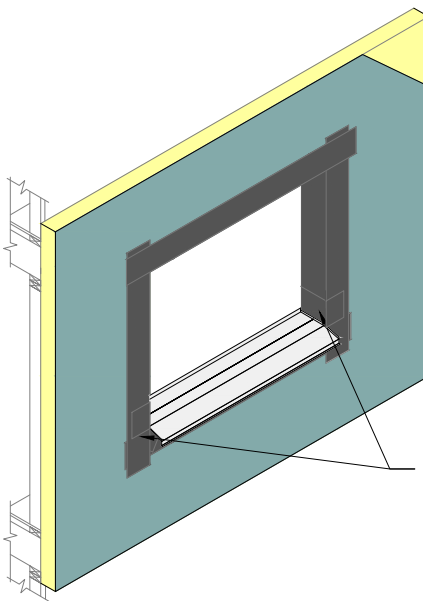


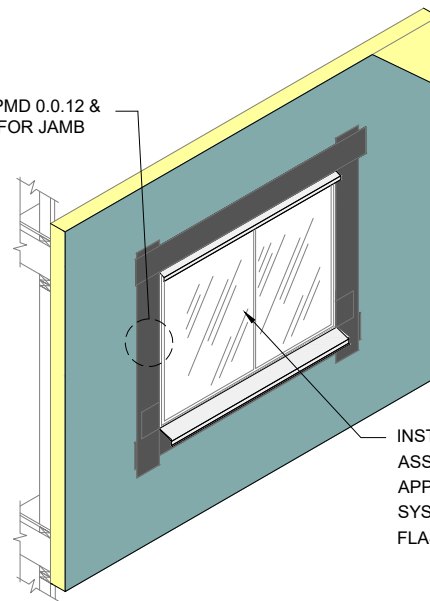
REFER TO OPMD 0.0.03, AND OPMD 0.0.04 FOR PREPARATION OF OPENING PRIOR TO FLASHING INSTALLATION

## **STEP #1**



APPLY DRYVIT AQUAFASH® SYSTEM SPLICES LAPPING OVER LIP OF SILL PAN FLASHING. (SEE NOTES 1 AND 2)

## **STEP #2**



REFER TO OPMD 0.0.12 & OPMD 0.0.13 FOR JAMB DETAIL

INSTALL WINDOW UNIT AND ASSOCIATED FLASHINGS AND APPLY DRYVIT AQUAFASH SYSTEM OVER VERTICAL LEG OF FLASHING (SEE NOTES 1 AND 2)

## **STEP #3**

# Outsulation® Plus MD System®

## Opening Flashing Integration

### NOTE:

1. REFER TO OPMD 0.0.12 AND OPMD 0.0.13 FOR INTEGRATION OF FLASHING.

2. DRYVIT FLASHING TAPE SURFACE CONDITIONER™ AND DRYVIT FLASHING TAPE™ MAY BE USED IN LIEU OF DRYVIT AQUAFASH SYSTEM.

3. FOR ADDITIONAL AIR/WATER-RESISTIVE BARRIER DETAILS, REFER TO DRYVIT PUBLICATION DS840.

The architecture, engineering, and design of the project using the Dryvit products is the responsibility of the project's design professional. All systems must comply with local building codes and standards. This detail is for general information and guidance only and Dryvit specifically disclaims any liability for the use of this detail and for the architecture, design, engineering or workmanship of any project. The project design professional determines, in its sole discretion, whether this detail or a functionally equivalent detail is best suited for the project. Use of a functionally equivalent detail does not violate Dryvit's warranty. This detail is subject to change without notice. Contact Dryvit to ensure you have the most recent version.