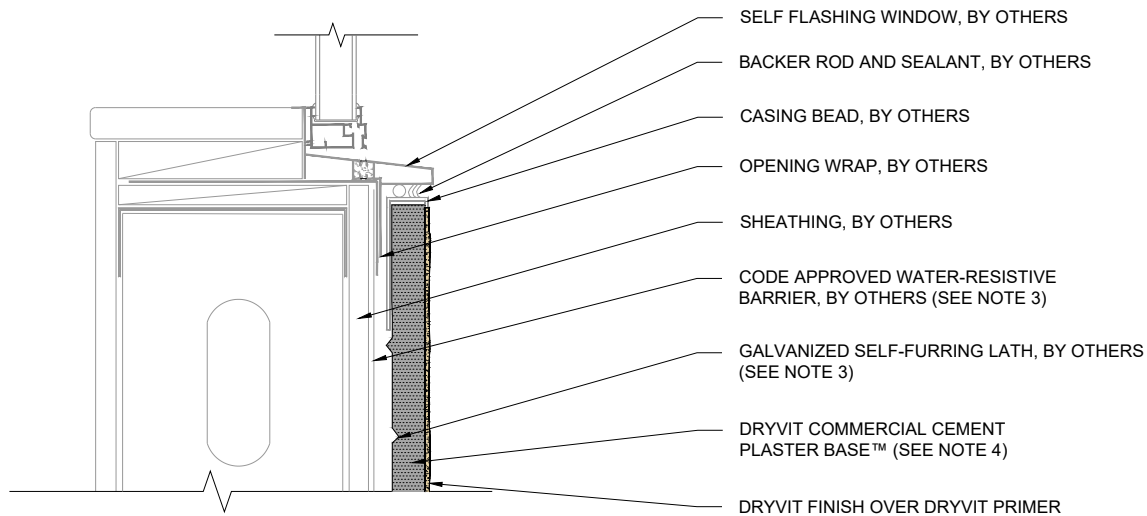


HEAD & JAMB



SILL

NOTE:

1. ALTERNATE DETAIL AT WINDOW HEAD WOULD INCLUDE METAL FLASHING WITH END DAMS
2. ADDITIONAL FLASHING MAY BE REQUIRED FOR WINDOWS THAT ARE NOT SELF FLASHING
3. BUILDING CODES REQUIRE 2 LAYERS OVER WOOD BASED SUBSTRATES. COMPLY WITH ALL LOCAL CODE REQUIREMENTS.
4. OTHER APPROVED SCRATCH AND BROWN COATS MAY BE ACCEPTABLE. CONSULT DRYVIT FOR SPECIFICS.

The architecture, engineering, and design of the project using the Dryvit products are the responsibility of the project's design professional. All products and systems must comply with local building codes and standards. This detail is for general information and guidance only and Dryvit specifically disclaims any liability for the use of this detail. The project design professional determines, in its sole discretion, whether this detail or a functionally equivalent detail is best suited for the project. This detail is subject to change without notice. Contact Dryvit to ensure you have the most recent version.

Commercial Cement Plaster 2™



Dryvit Technical Support: 800-556-7752

Detail: Termination at Self Flashing Nail-On Window

Drawn by: KAB

Checked by: KK

Scale: NTS

Date: 4/2022

File Name:

CCP-2 3



Construction Products Group

www.tremcocpg.com