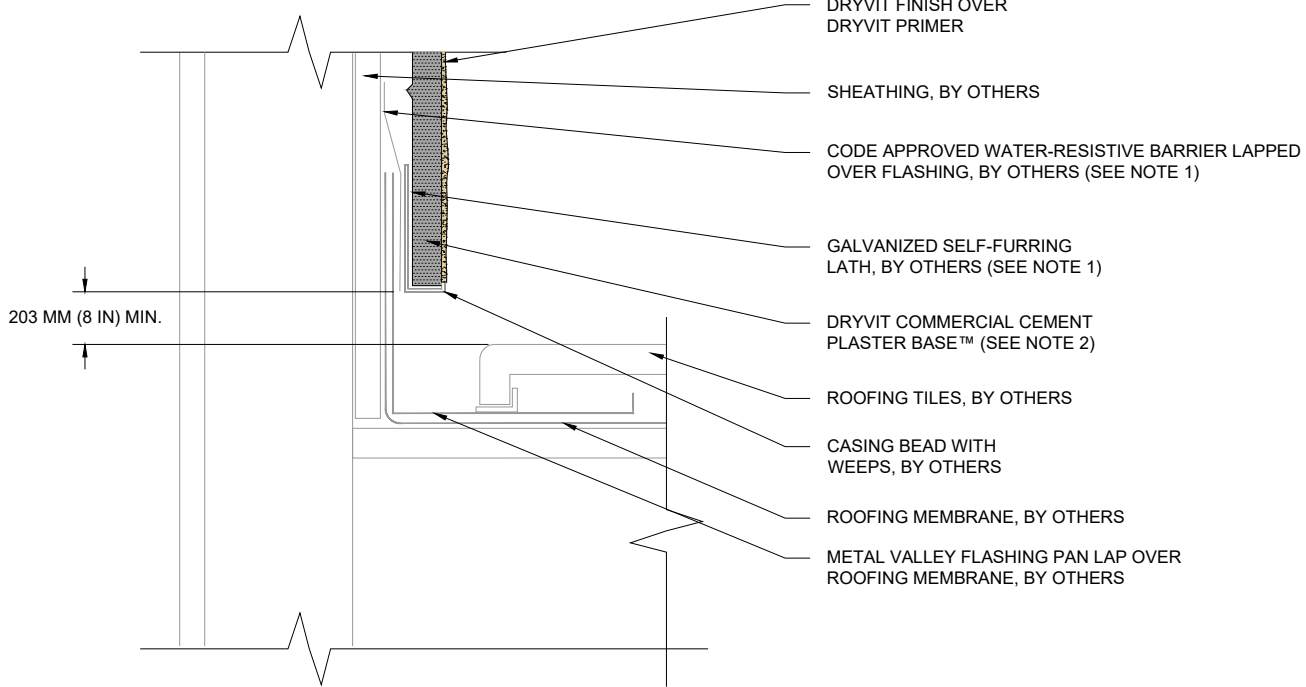


- DRYVIT FINISH OVER
DRYVIT PRIMER
- SHEATHING, BY OTHERS
- CODE APPROVED WATER-RESISTIVE
BARRIER LAPPED OVER FLASHING, BY OTHERS
(SEE NOTE 1)
- GALVANIZED SELF-FURRING
LATH, BY OTHERS (SEE NOTE 1)
- DRYVIT COMMERCIAL CEMENT
PLASTER BASE™ (SEE NOTE 2)
- CASING BEAD WITH WEEPS, BY OTHERS
- ROOFING PAPER EXTENDED OVER
SHEATHING, BY OTHERS
- METAL ROOF FLASHING, BY OTHERS
- ROOFING, BY OTHERS



- DRYVIT FINISH OVER
DRYVIT PRIMER
- SHEATHING, BY OTHERS
- CODE APPROVED WATER-RESISTIVE BARRIER LAPPED
OVER FLASHING, BY OTHERS (SEE NOTE 1)
- GALVANIZED SELF-FURRING
LATH, BY OTHERS (SEE NOTE 1)
- DRYVIT COMMERCIAL CEMENT
PLASTER BASE™ (SEE NOTE 2)
- ROOFING TILES, BY OTHERS
- CASING BEAD WITH
WEEPS, BY OTHERS
- ROOFING MEMBRANE, BY OTHERS
- METAL VALLEY FLASHING PAN LAP OVER
ROOFING MEMBRANE, BY OTHERS

NOTE:
 1. BUILDING CODES REQUIRE 2 LAYERS OVER WOOD BASED SUBSTRATES. COMPLY WITH ALL LOCAL CODE REQUIREMENTS.
 2. OTHER APPROVED SCRATCH AND BROWN COATS MAY BE ACCEPTABLE. CONSULT DRYVIT FOR SPECIFICS.

The architecture, engineering, and design of the project using the Dryvit products are the responsibility of the project's design professional. All products and systems must comply with local building codes and standards. This detail is for general information and guidance only and Dryvit specifically disclaims any liability for the use of this detail. The project design professional determines, in its sole discretion, whether this detail or a functionally equivalent detail is best suited for the project. This detail is subject to change without notice. Contact Dryvit to ensure you have the most recent version.

Commercial Cement Plaster 2™

 Dryvit Technical Support: 800-556-7752	Detail: Termination at Roof				File Name:		 Construction Products Group
	Drawn by: KAB	Checked by: KK	Scale: NTS	Date: 4/2022	CCP-2 11		
www.tremcocpg.com							