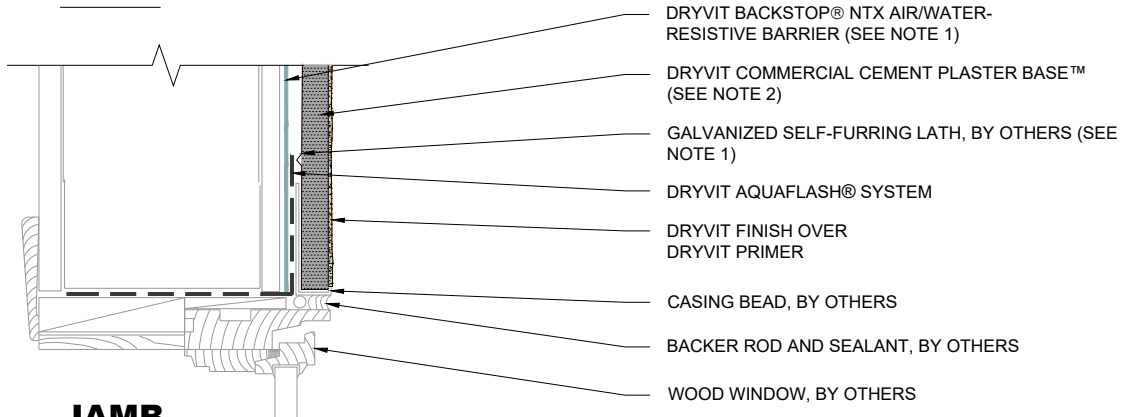


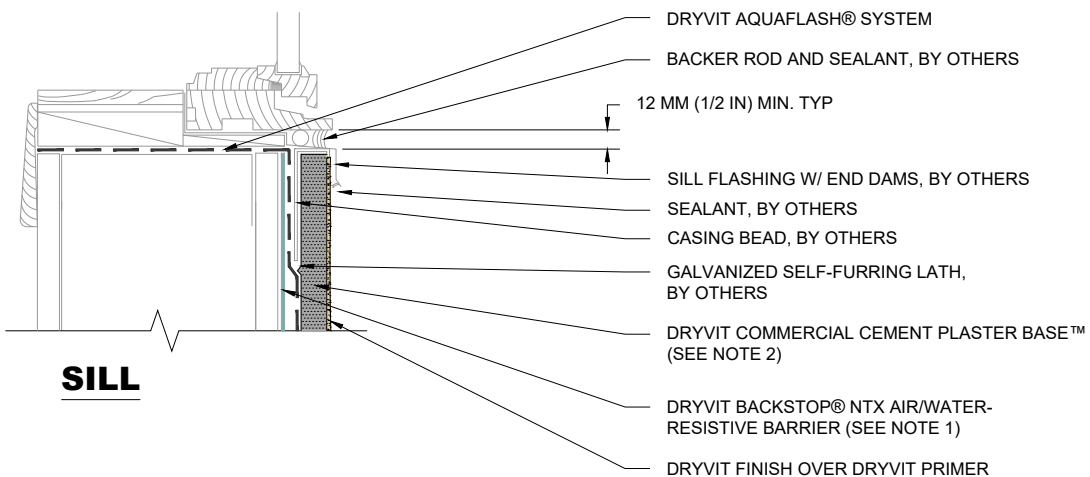
HEAD

- SHEATHING, BY OTHERS
- DRYVIT COMMERCIAL CEMENT PLASTER BASE™ (SEE NOTE 2)
- GALVANIZED SELF-FURRING LATH (SEE NOTE 1), BY OTHERS
- DRYVIT BACKSTOP® NTX AIR/WATER-RESISTIVE BARRIER (SEE NOTE 1)
- DRYVIT AQUAFLASH® SYSTEM
- DRYVIT FINISH OVER DRYVIT PRIMER
- CASING BEAD WITH WEEPS, BY OTHERS
- METAL HEAD FLASHING WITH END DAMS, BY OTHERS
- SEALANT, BY OTHERS
- WOOD WINDOW, BY OTHERS



JAMB

- DRYVIT BACKSTOP® NTX AIR/WATER-RESISTIVE BARRIER (SEE NOTE 1)
- DRYVIT COMMERCIAL CEMENT PLASTER BASE™ (SEE NOTE 2)
- GALVANIZED SELF-FURRING LATH, BY OTHERS (SEE NOTE 1)
- DRYVIT AQUAFLASH® SYSTEM
- DRYVIT FINISH OVER DRYVIT PRIMER
- CASING BEAD, BY OTHERS
- BACKER ROD AND SEALANT, BY OTHERS
- WOOD WINDOW, BY OTHERS



SILL

- DRYVIT AQUAFLASH® SYSTEM
- BACKER ROD AND SEALANT, BY OTHERS
- 12 MM (1/2 IN) MIN. TYP
- SILL FLASHING W/ END DAMS, BY OTHERS
- SEALANT, BY OTHERS
- CASING BEAD, BY OTHERS
- GALVANIZED SELF-FURRING LATH, BY OTHERS
- DRYVIT COMMERCIAL CEMENT PLASTER BASE™ (SEE NOTE 2)
- DRYVIT BACKSTOP® NTX AIR/WATER-RESISTIVE BARRIER (SEE NOTE 1)
- DRYVIT FINISH OVER DRYVIT PRIMER

NOTE:

1. BACKSTOP® NTX AIR/WATER-RESISTIVE BARRIER REQUIRES USE OF A SLIP SHEET LAYER SUCH AS #15 FELT OR PAPER BACKED LATH.
2. OTHER APPROVED SCRATCH AND BROWN COATS MAY BE ACCEPTABLE. CONSULT DRYVIT FOR SPECIFICS.

The architecture, engineering, and design of the project using the Dryvit products are the responsibility of the project's design professional. All products and systems must comply with local building codes and standards. This detail is for general information and guidance only and Dryvit specifically disclaims any liability for the use of this detail. The project design professional determines, in its sole discretion, whether this detail or a functionally equivalent detail is best suited for the project. This detail is subject to change without notice. Contact Dryvit to ensure you have the most recent version.

Commercial Cement Plaster 3™



Dryvit Technical Support: 800-556-7752

Detail: Termination at Wood Window

Drawn by: KAB

Checked by: KK

Scale: NTS

Date: 1/2023

File Name:

CCP-3 3



Construction Products Group

www.tremcocpg.com