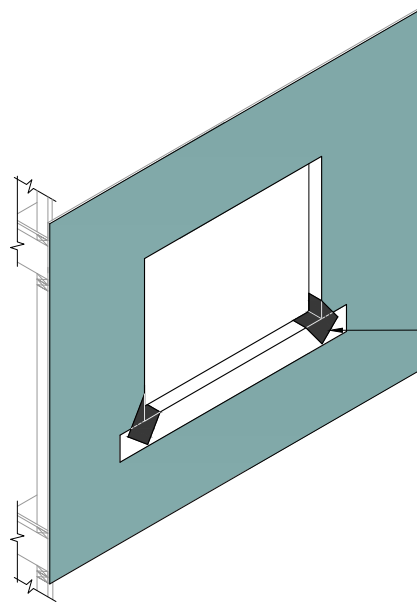


APPLY DRYVIT AQUAFLASH®  
SYSTEM (NOTES 1 AND 3)

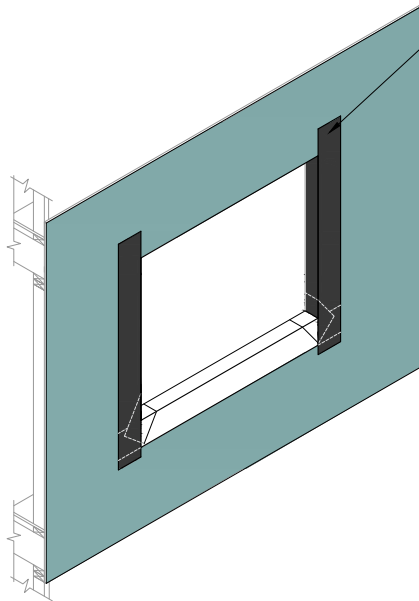
DRYVIT BACKSTOP® NTX  
AIR/WATER-RESISTIVE  
BARRIER COATING

### STEP #1



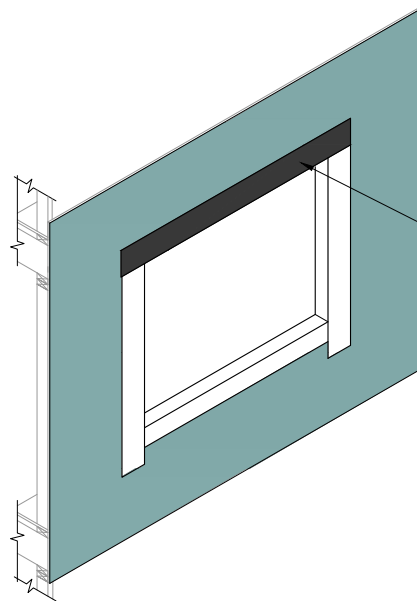
INSTALL DIAGONAL STRIP  
OF DRYVIT AQUAFLASH®  
MESH AND AQUAFLASH®  
AT CORNERS  
(NOTES 1 AND 3)

### STEP #2



INSTALL DRYVIT AQUAFLASH®  
SYSTEM AT JAMBS  
(NOTES 1 AND 3)

### STEP #3



INSTALL DRYVIT  
AQUAFLASH® SYSTEM  
AT HEADS  
(NOTES 1, 2, AND 3)

### STEP #4

#### NOTE:

1. DRYVIT AQUAFLASH® SHALL EXTEND TO INTERIOR FACE OF OPENING.
2. REFER TO HEAD, SILL AND JAMB DETAILS FOR FLASHING INTEGRATION.
3. INSTALL WINDOW UNIT AND ASSOCIATED FLASHINGS PER MANUFACTURER'S RECOMMENDATIONS, CODE REQUIREMENTS AND PROJECT DOCUMENTS.

*The architecture, engineering, and design of the project using the Dryvit products are the responsibility of the project's design professional. All products and systems must comply with local building codes and standards. This detail is for general information and guidance only and Dryvit specifically disclaims any liability for the use of this detail. The project design professional determines, in its sole discretion, whether this detail or a functionally equivalent detail is best suited for the project. This detail is subject to change without notice. Contact Dryvit to ensure you have the most recent version.*

#### Commercial Cement Plaster 4™



Dryvit Technical Support: 800-556-7752

Detail: Opening Preparation Backstop® NTX / AquaFlash® System

Drawn by: KAB

Checked by:

Scale: NTS

Date: 5/2023

File Name:

CCP-4 2



Construction Products Group

www.tremcocpg.com