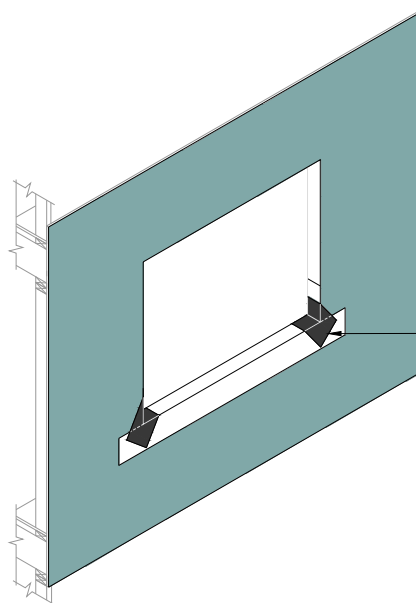


STEP #1

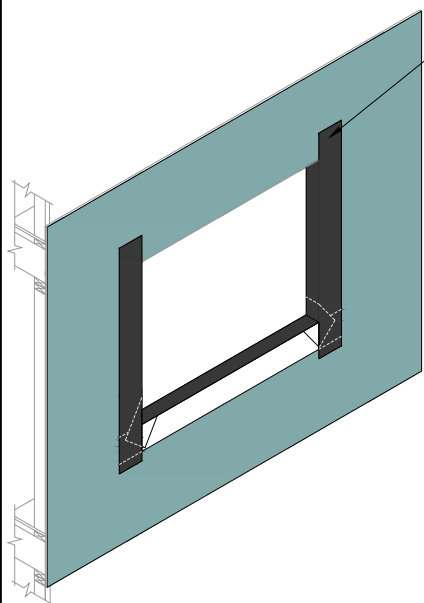
APPLY DRYVIT AQUAFLASH® SYSTEM (SEE NOTES 1 AND 3)

DRYVIT BACKSTOP® NTX
AIR / WATER-RESISTIVE
BARRIER COATING



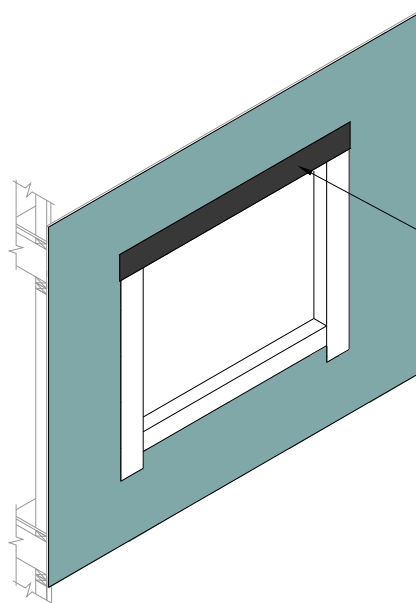
STEP #2

INSTALL DIAGONAL STRIP
OF DRYVIT AQUAFLASH®
MESH AND AQUAFLASH®
AT CORNERS
(SEE NOTES 1 AND 3)



STEP #3

INSTALL DRYVIT AQUAFLASH®
SYSTEM AT JAMBS
(SEE NOTES 1 AND 3)



STEP #4

INSTALL DRYVIT
AQUAFLASH® SYSTEM
AT HEADS
(SEE NOTES 1, 2, AND 3)

NOTE:

1. DRYVIT AQUAFLASH® SHALL EXTEND TO INTERIOR FACE OF OPENING.
2. REFER TO HEAD, SILL AND JAMB DETAILS FOR FLASHING INTEGRATION.
3. INSTALL WINDOW UNIT AND ASSOCIATED FLASHINGS PER MANUFACTURER'S RECOMMENDATIONS, CODE REQUIREMENTS AND PROJECT DOCUMENTS.

The architecture, engineering, and design of the project using the Dryvit products are the responsibility of the project's design professional. All products and systems must comply with local building codes and standards. This detail is for general information and guidance only and Dryvit specifically disclaims any liability for the use of this detail. The project design professional determines, in its sole discretion, whether this detail or a functionally equivalent detail is best suited for the project. This detail is subject to change without notice. Contact Dryvit to ensure you have the most recent version.

Commercial Cement Plaster 5™



Dryvit Technical Support: 800-556-7752

Detail: Opening Preparation- Backstop® NTX/AquaFlash® System

Drawn by: KAB

Checked by: KK

Scale: NTS

Date: 4/2022

File Name:

CCP-5 3



Construction Products Group

www.tremcocpg.com