

# Dryvit® Textured Acrylic Finishes (TAFS® Option 2) For Exterior Soffits



**DS842**

100% Acrylic Architectural Coatings for use on Exterior Soffits

## Dryvit Textured Acrylic Finishes (TAFS Option 2) For Exterior Soffits Installation Details

# Table of Contents

Detail	Page
--------	------

TAFS OPTION 2 CUTAWAY	TSS 1
TERMINATION AT SOFFIT - "L" BEAD	TSS 2
TERMINATION AT VERTICAL WALL	TSS 3
TERMINATION AT CONTROL JOINT	TSS 4
TERMINATION AT CHANNEL REVEAL	TSS 5
TERMINATION AT SOFFIT VENT	TSS 6

#### NOTE:

DRYVIT MAKES NO REPRESENTATION REGARDING CONFORMITY OF ITS SUGGESTIONS TO MODEL BUILDING CODES, ENGINEERING CRITERIA, SPECIFIC APPLICATIONS, OR PROJECT LOCATIONS. ALL COMPONENTS INDICATED IN ILLUSTRATIONS, AS WELL AS OTHERS THAT MAY BE REQUIRED FOR THE INTEGRITY OF THE SYSTEM SHALL BE DESIGNED, DETAILED, AND ENGINEERED BY REPRESENTATIVES OF THE ARCHITECT, OWNER, OR CONTRACTOR TO BE IN CONFORMANCE WITH MODEL CODES, ARCHITECTURAL, AND ENGINEERING REQUIREMENTS PERTAINING TO SPECIFIC BUILDING PROJECTS.

DRYVIT MAKES NO WARRANTY, EXPRESSED OR IMPLIED, AS TO THE ARCHITECTURAL DESIGN, ENGINEERING, OR WORKMANSHIP OF PROJECTS UTILIZING DRYVIT SYSTEMS OR PRODUCTS.

THE LIABILITIES OF DRYVIT SHALL BE AS STATED IN THE DRYVIT STANDARD WARRANTY. CONTACT DRYVIT FOR A FULL AND COMPLETE COPY OF THE WARRANTY.

*The architecture, engineering, and design of the project using the Dryvit products are the responsibility of the project's design professional. All products and systems must comply with local building codes and standards. This detail is for general information and guidance only and Dryvit specifically disclaims any liability for the use of this detail. The project design professional determines, in its sole discretion, whether this detail or a functionally equivalent detail is best suited for the project. This detail is subject to change without notice. Contact Dryvit to ensure you have the most recent version.*

#### TAFS® 2 For Soffits



Dryvit Technical Support: 800-556-7752

Detail: Table of Contents

Drawn by: KAB

Checked by: KK

Scale: NTS

Date: 5/2023

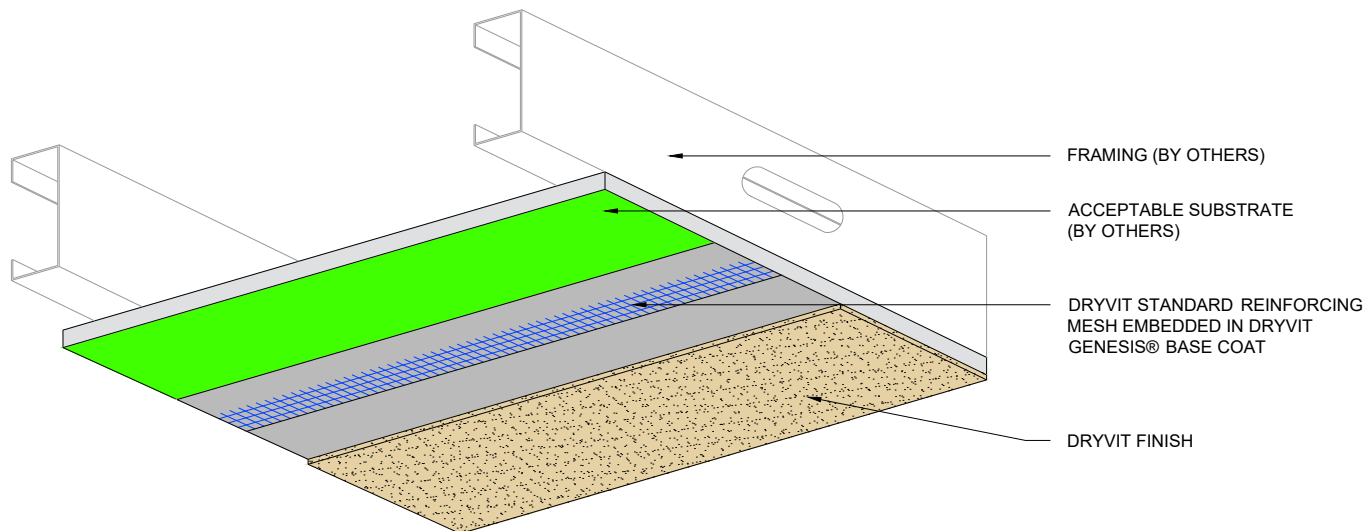
File Name:

TSS TOC



Construction Products Group

[www.tremcocpg.com](http://www.tremcocpg.com)



**NOTE:**

1. CONTROL JOINTS ARE RECOMMENDED EVERY 6.1 M (20 FT).
2. REFER TO DRYVIT PUBLICATION DS173 FOR SPECIFIC REQUIREMENTS FOR SOFFIT AREAS.

*The architecture, engineering, and design of the project using the Dryvit products are the responsibility of the project's design professional. All products and systems must comply with local building codes and standards. This detail is for general information and guidance only and Dryvit specifically disclaims any liability for the use of this detail. The project design professional determines, in its sole discretion, whether this detail or a functionally equivalent detail is best suited for the project. This detail is subject to change without notice. Contact Dryvit to ensure you have the most recent version.*

**TAFS® 2 For Soffits**



Dryvit Technical Support: 800-556-7752

Detail: TAFS Option 2 Cutaway

Drawn by: KAB

Checked by: KK

Scale: NTS

Date: 5/2023

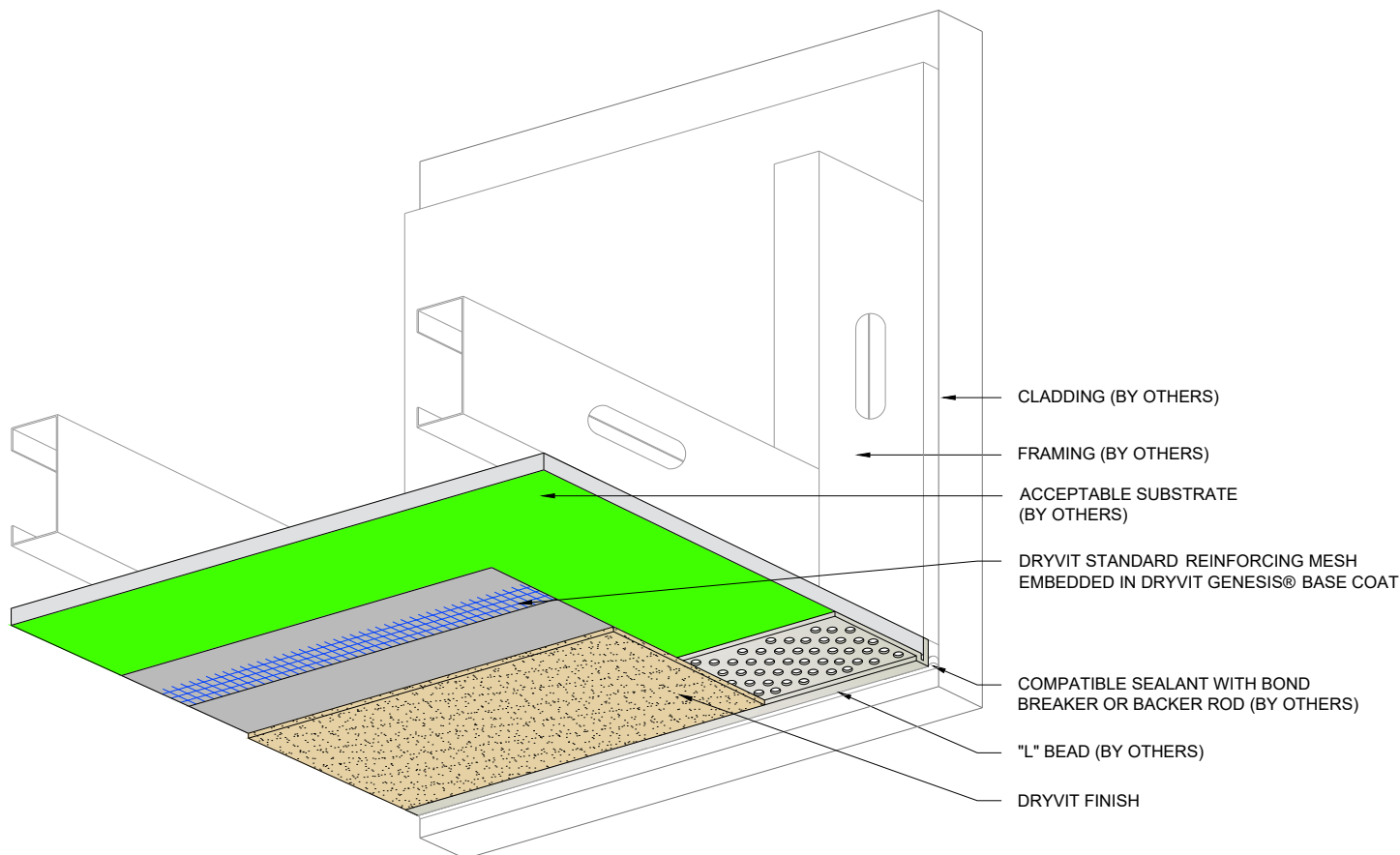
File Name:

TSS 1



Construction Products Group

[www.tremcocpg.com](http://www.tremcocpg.com)



**NOTE:**

1. CONTROL JOINTS ARE RECOMMENDED EVERY 6.1 M (20 FT).
2. REFER TO DRYVIT PUBLICATION DS173 FOR SPECIFIC REQUIREMENTS FOR SOFFIT AREAS.

*The architecture, engineering, and design of the project using the Dryvit products are the responsibility of the project's design professional. All products and systems must comply with local building codes and standards. This detail is for general information and guidance only and Dryvit specifically disclaims any liability for the use of this detail. The project design professional determines, in its sole discretion, whether this detail or a functionally equivalent detail is best suited for the project. This detail is subject to change without notice. Contact Dryvit to ensure you have the most recent version.*

**TAFS® 2 For Soffits**



Dryvit Technical Support: 800-556-7752

Detail: Termination At Soffit - "L" Bead

Drawn by: KAB

Checked by: KK

Scale: NTS

Date: 5/2023

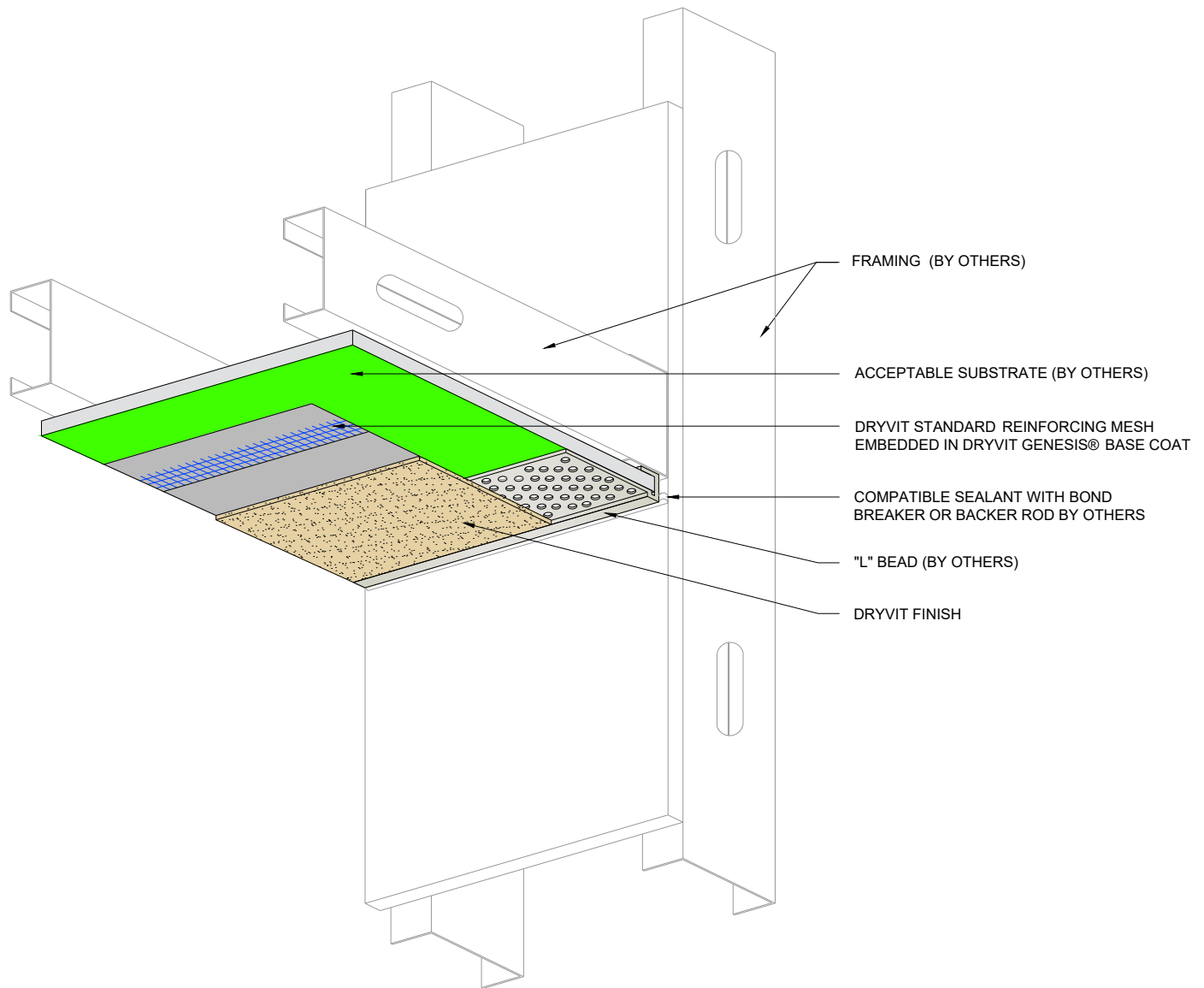
File Name:

TSS 2



Construction Products Group

[www.tremcocpg.com](http://www.tremcocpg.com)



**NOTE:**

1. CONTROL JOINTS ARE RECOMMENDED EVERY 6.1 M (20 FT).
2. REFER TO DRYVIT PUBLICATION DS173 FOR SPECIFIC REQUIREMENTS FOR SOFFIT AREAS.

*The architecture, engineering, and design of the project using the Dryvit products are the responsibility of the project's design professional. All products and systems must comply with local building codes and standards. This detail is for general information and guidance only and Dryvit specifically disclaims any liability for the use of this detail. The project design professional determines, in its sole discretion, whether this detail or a functionally equivalent detail is best suited for the project. This detail is subject to change without notice. Contact Dryvit to ensure you have the most recent version.*

**TAFS® 2 For Soffits**



Dryvit Technical Support: 800-556-7752

Detail: Termination At Vertical Wall

Drawn by: KAB

Checked by: KK

Scale: NTS

Date: 5/2023

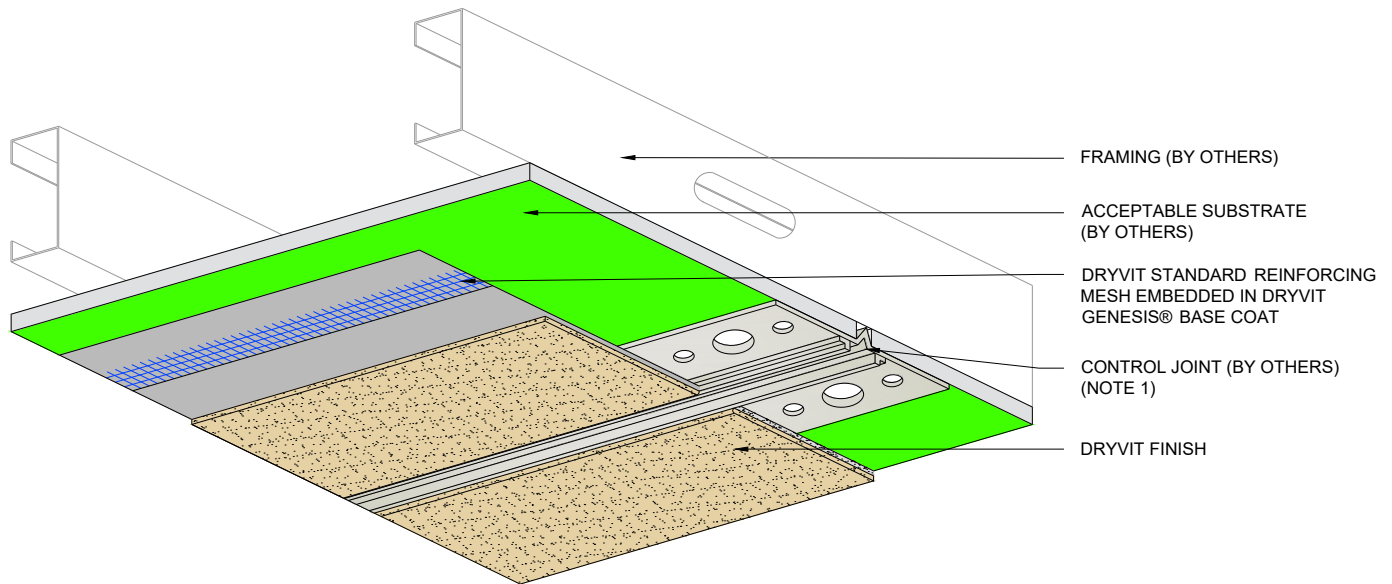
File Name:

TSS 3



Construction Products Group

[www.tremcocpg.com](http://www.tremcocpg.com)



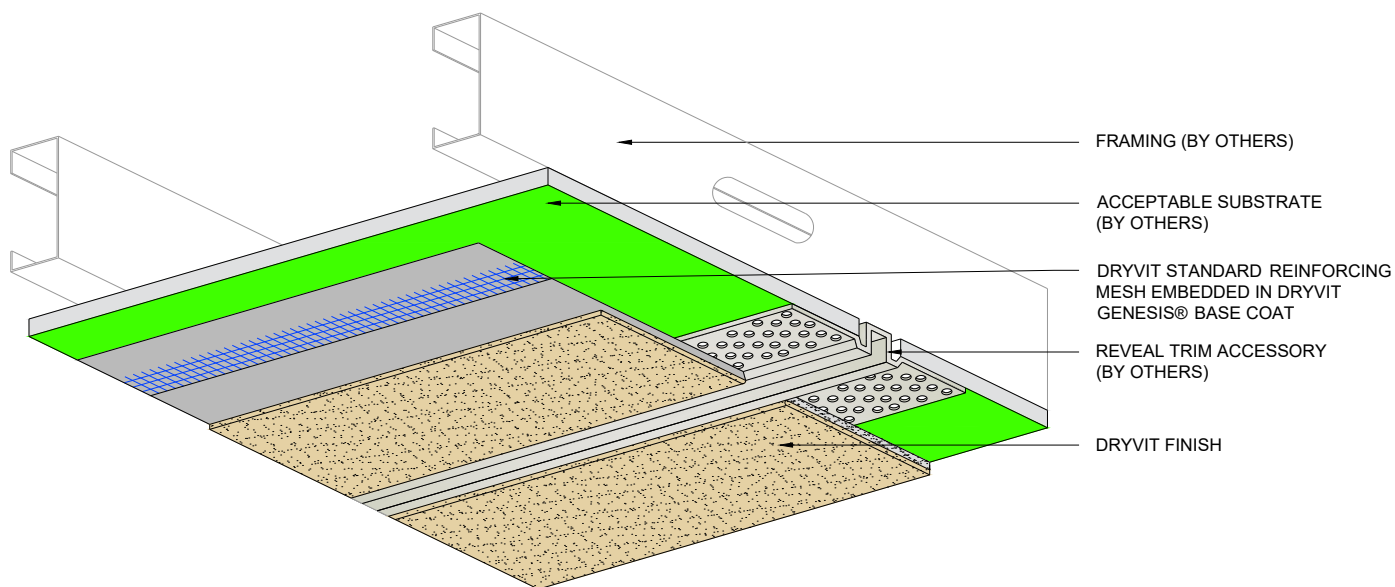
**NOTE:**

1. CONTROL JOINTS ARE RECOMMENDED EVERY 6.1 M (20 FT).
2. REFER TO DRYVIT PUBLICATION DS173 FOR SPECIFIC REQUIREMENTS FOR SOFFIT AREAS.

*The architecture, engineering, and design of the project using the Dryvit products are the responsibility of the project's design professional. All products and systems must comply with local building codes and standards. This detail is for general information and guidance only and Dryvit specifically disclaims any liability for the use of this detail. The project design professional determines, in its sole discretion, whether this detail or a functionally equivalent detail is best suited for the project. This detail is subject to change without notice. Contact Dryvit to ensure you have the most recent version.*

**TAFS® 2 For Soffits**

  Dryvit Technical Support: 800-556-7752	Detail: Termination At Control Joint				File Name:  TSS 4	  Construction Products Group
	Drawn by: KAB	Checked by: KK	Scale: NTS	Date: 5/2023		
	www.tremcocpg.com					



**NOTE:**

1. CONTROL JOINTS ARE RECOMMENDED EVERY 6.1 M (20 FT).
2. REFER TO DRYVIT PUBLICATION DS173 FOR SPECIFIC REQUIREMENTS FOR SOFFIT AREAS.

*The architecture, engineering, and design of the project using the Dryvit products are the responsibility of the project's design professional. All products and systems must comply with local building codes and standards. This detail is for general information and guidance only and Dryvit specifically disclaims any liability for the use of this detail. The project design professional determines, in its sole discretion, whether this detail or a functionally equivalent detail is best suited for the project. This detail is subject to change without notice. Contact Dryvit to ensure you have the most recent version.*

**TAFS® 2 For Soffits**



Dryvit Technical Support: 800-556-7752

Detail: Termination At Channel Reveal

Drawn by: KAB

Checked by: KK

Scale: NTS

Date: 5/2023

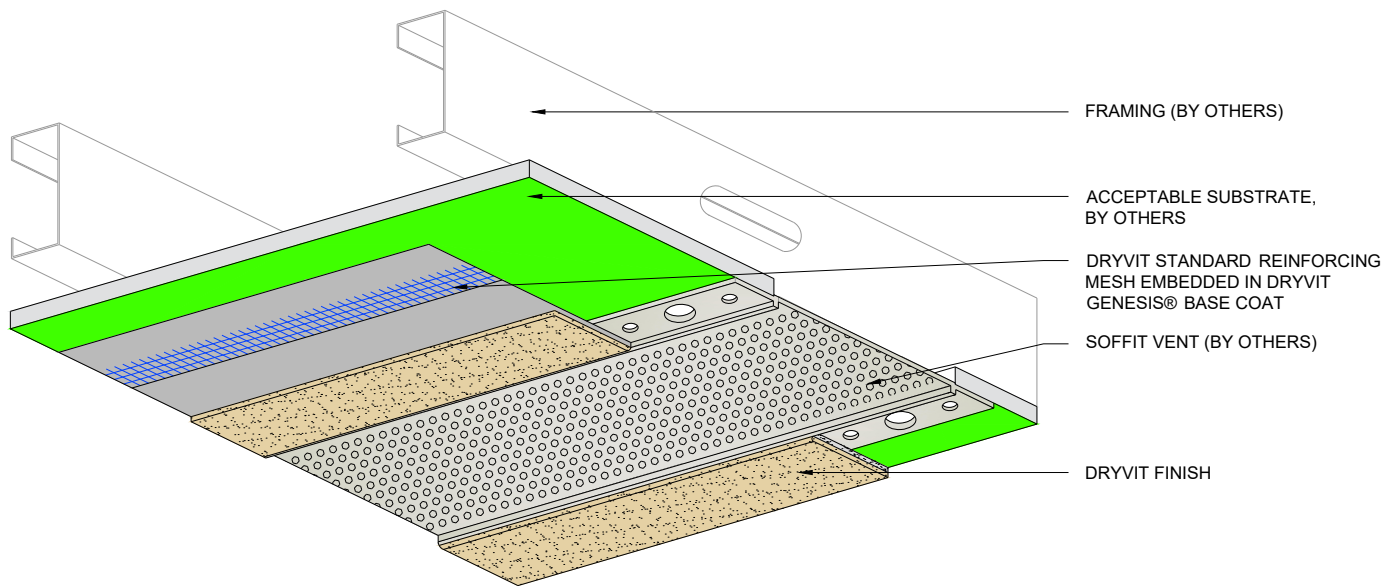
File Name:

TSS 5



Construction Products Group

[www.tremcocpg.com](http://www.tremcocpg.com)



**NOTE:**

1. CONTROL JOINTS ARE RECOMMENDED EVERY 6.1 M (20 FT).
2. REFER TO DRYVIT PUBLICATION DS173 FOR SPECIFIC REQUIREMENTS FOR SOFFIT AREAS.
3. SEAL ALL BUTT JOINTS, INTERSECTIONS, AND ENDS OF VENTS WITH COMPATIBLE SEALANT.

*The architecture, engineering, and design of the project using the Dryvit products are the responsibility of the project's design professional. All products and systems must comply with local building codes and standards. This detail is for general information and guidance only and Dryvit specifically disclaims any liability for the use of this detail. The project design professional determines, in its sole discretion, whether this detail or a functionally equivalent detail is best suited for the project. This detail is subject to change without notice. Contact Dryvit to ensure you have the most recent version.*

**TAFS® 2 For Soffits**



Dryvit Technical Support: 800-556-7752

Detail: Termination At Soffit Vent

Drawn by: KAB

Checked by: KK

Scale: NTS

Date: 5/2023

File Name:

TSS 6



Construction Products Group

[www.tremcocpg.com](http://www.tremcocpg.com)