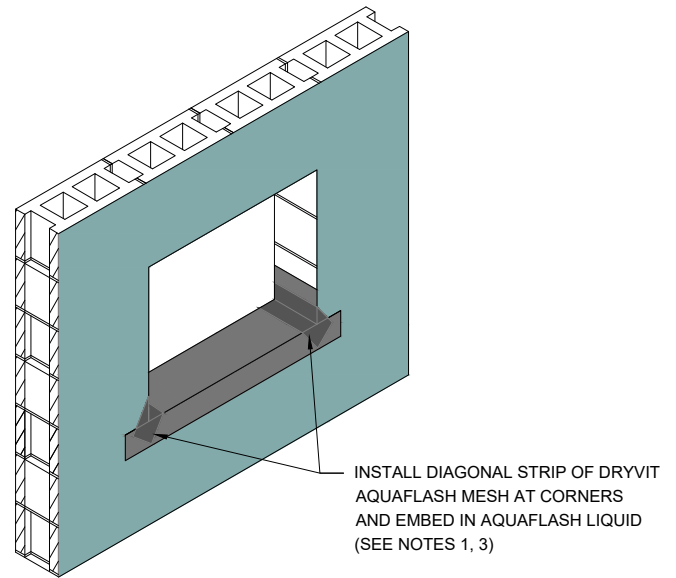
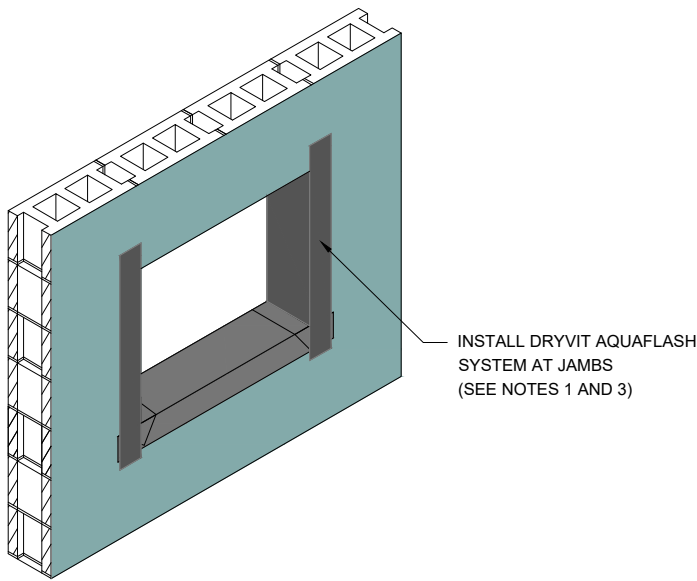


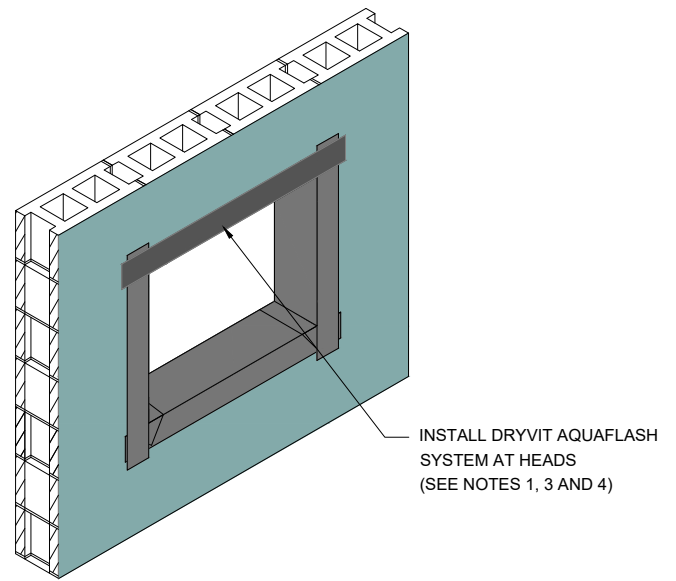
STEP #1



STEP #2



STEP #3



STEP #4

Outsulation[®] Plus MD System[®]

Opening Preparation - AquaFlash[®] System⁵ Option

NOTE:

1. DRYVIT AQUAFLASH SHALL EXTEND TO INTERIOR FACE OF OPENING.
2. REFER TO HEAD, SILL AND JAMB DETAILS FOR FLASHING INTEGRATION.
3. DRYVIT FLASHING TAPE SURFACE CONDITIONER[™] AND DRYVIT FLASHING TAPE[™] MAY BE USED IN LIEU OF DRYVIT AQUAFLASH SYSTEM.
4. INSTALL WINDOW UNIT AND ASSOCIATED FLASHING PER MANUFACTURER'S RECOMMENDATIONS, CODE REQUIREMENTS AND PROJECT DOCUMENTS.
5. AQUAFLASH SYSTEM CONSISTS OF AQUAFLASH MESH AND AQUAFLASH LIQUID.
6. FOR ADDITIONAL AIR/WATER-RESISTIVE BARRIER DETAILS, REFER TO DRYVIT PUBLICATION DS840.

The architecture, engineering, and design of the project using the Dryvit products is the responsibility of the project's design professional. All systems must comply with local building codes and standards. This detail is for general information and guidance only and Dryvit specifically disclaims any liability for the use of this detail and for the architecture, design, engineering or workmanship of any project. The project design professional determines, in its sole discretion, whether this detail or a functionally equivalent detail is best suited for the project. Use of a functionally equivalent detail does not violate Dryvit's warranty. This detail is subject to change without notice. Contact Dryvit to ensure you have the most recent version.