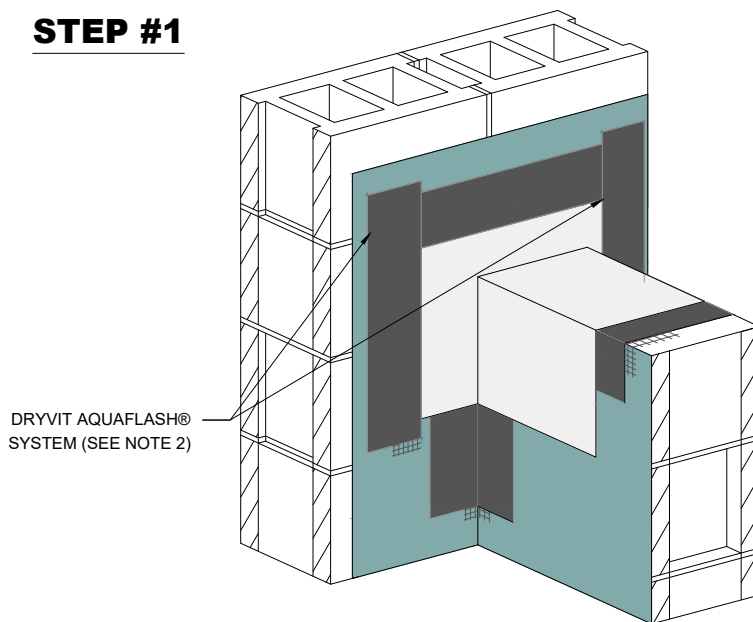


STEP #1

STEP #2



STEP #3

Outsulation[®] Plus MD System[®] Preparation At Parapet/ Wall Intersection

NOTE:

1. DRYVIT RECOMMENDS THAT GROUND FLOOR APPLICATIONS AND ALL FACADES EXPOSED TO ABNORMAL STRESS, HIGH TRAFFIC, OR DELIBERATE IMPACT HAVE THE BASE COAT REINFORCED WITH PANZER[®] MESH PRIOR TO STANDARD[™] OR STANDARD PLUS[™] MESH. LOCATION OF HIGH IMPACT ZONES SHOULD BE INDICATED ON CONTRACT DRAWINGS.

2. DRYVIT FLASHING TAPE SURFACE CONDITIONER[™] AND DRYVIT FLASHING TAPE[™] MAY BE USED IN LIEU OF DRYVIT AQUAFLASH SYSTEM.

The architecture, engineering, and design of the project using the Dryvit products is the responsibility of the project's design professional. All systems must comply with local building codes and standards. This detail is for general information and guidance only and Dryvit specifically disclaims any liability for the use of this detail and for the architecture, design, engineering or workmanship of any project. The project design professional determines, in its sole discretion, whether this detail or a functionally equivalent detail is best suited for the project. Use of a functionally equivalent detail does not violate Dryvit's warranty. This detail is subject to change without notice. Contact Dryvit to ensure you have the most recent version.

