



BUILDING AND RENOVATING WITH DRYVIT PREFABRICATED PANELS



Le Meridien Hotel
Columbus, OH





OUR GROWING NATIONAL PARTNER FABRICATOR NETWORK

Not only is Dryvit the most experienced EIFS manufacturer, having been at the forefront of the EIFS panelization business since the early 1970s, but it also offers the largest national partner fabricator network in the industry, with more than 50 current partners and growing every day.

Most of our partner fabricators work on projects all over the country, meaning that if you have a project anywhere in the U.S., we can find a partner fabricator for your panelization project.

For information on the partner fabricator nearest you, contact our Tech21 team at 1-800-556-7752, ext. 9.





GET CONTROL OVER SCHEDULES AND QUALITY WITH PANELIZED WALL SYSTEMS

Whether you are building new or renovating, Tech21 prefabricated systems from Dryvit offer unique advantages over traditional field-applied construction.

Dryvit has been offering prefabricated Outsulation® wall systems since the early 1970s. Tech21 by Dryvit incorporates all the benefits of an Outsulation® system, including continuous insulation (CI) and all of the finish options to meet any design need – all fully-tested wall assemblies that meet existing building codes and offer extraordinary energy efficiency. Tech21 by Dryvit offers the most experienced and deepest team of partner fabricators in the industry.

WHY BUILD WITH PREFABRICATED PANELS?

- Limited space for on-site construction
- Fast track project schedule is desired
- Labor shortage
- Weather concerns that could delay the project
- Quality control

WHY PANELIZE WITH DRYVIT SYSTEMS?

- Largest Partner Fabricator Network in North America
- Technical support, including panel configurations
- Industry's most proven, tested system assemblies and quality products
- Support from the industry's leading brand
- Nationwide distribution network



THE BENEFITS OF PREFABRICATION

Building owners, architects and general contractors alike all derive significant benefits from prefabricated panel construction.



QUALITY ASSURANCE – building wall assembly panels in a controlled, temperature moderated environment leads to consistent high quality construction.

EXTENDING THE CONSTRUCTION SEASON – Many claddings cannot be applied at temperatures lower than 40°F. Prefabricating panels in climate controlled conditions and hanging the panels in temperatures lower than 40°F, can extend the construction season.

COMPRESS THE CONSTRUCTION SCHEDULE – In new construction, prefabricated panels can be completed while the construction and framing of the structure itself is underway, allowing for quicker enclosure and enabling the building to open sooner.

REDUCE THE AMOUNT OF SCAFFOLDING – With certain panel assemblies, you may be able to eliminate scaffolding, substantially reducing costs.

JUST-IN-TIME WORK FLOW – Fabricated panels arrive ready to attach to the building, creating a just-in-time process. An additional benefit is a minimization of the staging area, such as in urban settings, hard to scaffold construction, and sites with costly sidewalk rental fees.

REDUCED JOBSITE CONGESTION – Because all of the application is done offsite and delivered when needed, you get cleaner jobsite conditions.

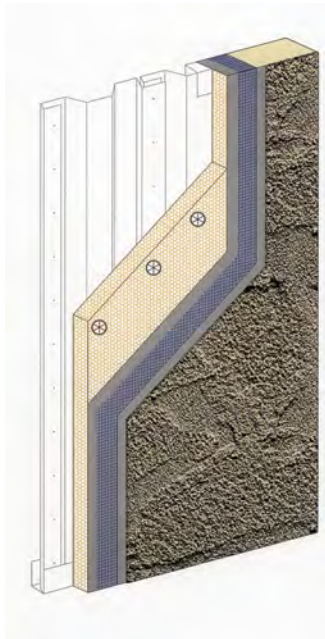
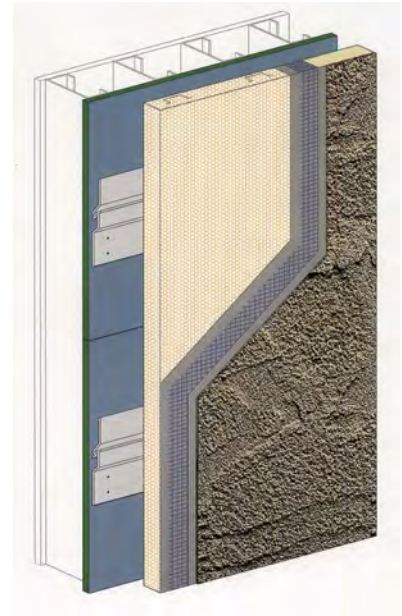
LIGHTWEIGHT/REDUCED STRUCTURAL REQUIREMENTS – The lighter weight of the Outsulation panels makes installation faster, safer and more efficient. Tech21 by Dryvit panels typically weigh 8 pounds per square foot, compared to 25-to-50 pounds per square foot for traditional masonry construction.

THREE TECH21 PANELIZATION SYSTEM OPTIONS

Tech21 by Dryvit features three fully tested, proven panel assemblies for both new construction and exterior renovations.

FEDDERLITE® ASSEMBLY

Fedderlite is a panel system for use with retrofit or new construction over solid substrates. This panel utilizes a unique process for embedding reinforcing channels into the continuous insulation to provide a means for handling, as well as mechanical attachment to the wall. Fedderlite panels may be adhered or mechanically fastened to approved substrates.

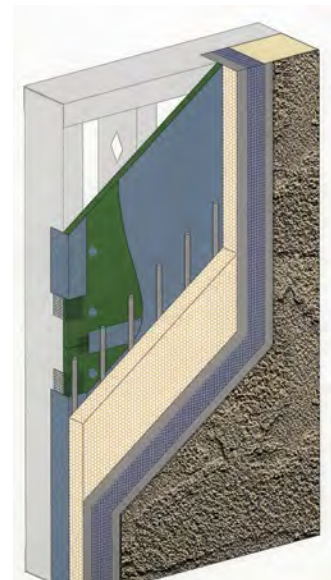


METALITE® ASSEMBLY

Metalite is a prefabricated panel system utilizing an Outsulation system over a specially designed light gauge metal frame and proprietary metal pan. Metalite is ideally suited for pre-engineered metal buildings, warehouses and manufacturing facilities, as well as mechanical screens.

STEEL STUD/COMPOSITE ASSEMBLY

The most versatile of all panel systems, steel stud panels provide the strength and ability to be configured so as to form to practically any shape panel. All stud panels are designed in accordance with the current AISI Standards and the manufacturers' load tables. Also deflections are limited to $L/240$. The studs, sheathing and building connections are engineered by the panel fabricator to properly resist all design loads. At approximately 8 lbs./sf, steel stud panels still provide a light weight alternative to conventional exterior wall systems, providing a single structural system for supporting the exterior cladding and window systems as well as other accessories.



Visit Dryvit.com to view specifications and details for each system option.



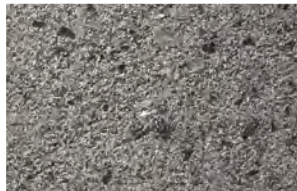
GET STARTED TODAY!

Consult with Dryvit's Tech21 Team at 1-800-556-7752 ext. 9 for more information on how you can benefit from the Tech21 panelization program.

FINISHES FOR EVERY DESIGN CHALLENGE

We all want our buildings to stand out and be noticed. That's why Dryvit manufactures an array of finishes that replicate brick to stone to granite to metal panels and more. Use them alone or in combination to create the unique exterior you want, but can not afford with heavier, costlier materials.

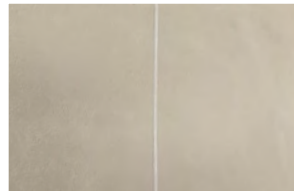
VENEERS



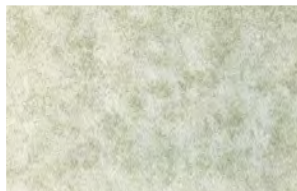
Seamless Stone



Traditional Plaster
Renders



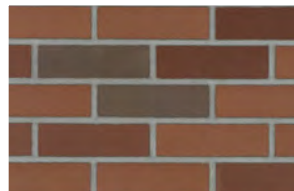
Limestone



Old World or "Aged"
Plaster



Metal Panel Effects



Brick

Information contained in this brochure conforms to the standard detail recommendations and specifications for the installation of Dryvit Systems, Inc. products as of the date of publication of this document and is presented in good faith. Dryvit Systems, Inc. assumes no liability, expressed or implied, as to the architecture, engineering or workmanship of any product. To ensure that you are using the latest, most complete information, contact Dryvit Systems, Inc.

Dryvit Systems, Inc.
One Energy Way
West Warwick, RI 02893
401-822-4100
dryvit.com



© Dryvit Systems, Inc. 2016
Printed in U.S.A. 9-16-5M
DS210