

## **Details for Dryvit Outsulation Systems Meeting Hurricane Zone, High-Velocity Impact Requirements**

# Table of Contents

## Detail

OUTSULATION® PLUS MD SYSTEM®	LISTING NO.	IMPACT RATING	DESIGN PRESSURE	APPLICABLE BUILDING HEIGHT
OVER MIN. ½" ASTM C1177 GLASS MAT EXTERIOR GYPSUM OR MIN. ½" SECUROCK EXOAIR 430	NOA 24-0912.11	LARGE & SMALL MISSILE	±66.5 PSF	ANY
OVER MIN. ¾" ASTM C1177 GLASS MAT EXTERIOR GYPSUM OR MIN. ¾" SECUROCK EXOAIR 430	NOA 24-0912.10	LARGE & SMALL MISSILE	±106 PSF	ANY
OVER MIN. ¾" ASTM C1177 GLASS MAT EXTERIOR GYPSUM OR MIN. ¾" SECUROCK EXOAIR 430	NOA24-0912.12	SMALL MISSILE	±93 PSF	30 FEET ABOVE GRADE AND ABOVE
OVER MIN. ¾" ASTM C1177 GLASS MAT EXTERIOR GYPSUM OR MIN. ¾" SECUROCK EXOAIR 430	NOA 24-0912.13	LARGE & SMALL MISSILE	±110 PSF	ANY
OVER MIN. ¾" ASTM C1177 GLASS MAT EXTERIOR GYPSUM OR MIN. ¾" SECUROCK EXOAIR 430	NOA 24-0912.14	LARGE & SMALL MISSILE	±135 OR ± 155 PSF	ANY
OVER CONCRETE OR CONCRETE BLOCK	NOA 23-1101.11	LARGE & SMALL MISSILE	±160 PSF	ANY
OVER MIN. ½" ASTM C1177 GLASS MAT EXTERIOR GYPSUM OR MIN. ¾" SECUROCK OR EXOAIR 430	NOA 24-0912.08	LARGE & SMALL MISSILE	±70 PSF	ANY
OVER MIN. ¾" 5-PLY PLYWOOD	NOA 23-1101.10	LARGE & SMALL MISSILE	±100 PSF	ANY

OUTSULATION® SYSTEM	LISTING NO.	IMPACT RATING	DESIGN PRESSURE	APPLICABLE BUILDING HEIGHT
OVER MIN. ¾" ASTM C1177 GLASS MAT EXTERIOR GYPSUM	NOA 24-0912.12	SMALL MISSILE	±93 PSF	30 FEET ABOVE GRADE AND UP
OVER MIN. ¾" ASTM C1177 GLASS MAT EXTERIOR GYPSUM	NOA 24-0912.13	LARGE & SMALL MISSILE	±110 PSF	ANY
OVER MIN. ¾" ASTM C1177 GLASS MAT EXTERIOR GYPSUM	NOA 24-0912.14	LARGE & SMALL MISSILE	±135 OR ± 155 PSF	ANY
OVER CONCRETE OR CONCRETE BLOCK	NOA 23-1101.11	LARGE & SMALL MISSILE	±160 PSF	ANY
OVER MIN. ½" ASTM C1177 GLASS MAT EXTERIOR GYPSUM	NOA 24-0912.08	LARGE & SMALL MISSILE	±70 PSF	ANY

OUTSULATION® X SYSTEM	LISTING NO.	IMPACT RATING	DESIGN PRESSURE	APPLICABLE BUILDING HEIGHT
OVER MIN. ¾" ASTM C1177 GLASS MAT EXTERIOR GYPSUM OR MIN. ¾" SECUROCK EXOAIR 430	NOA24-0912.09	LARGE & SMALL MISSILE	±93 PSF	30 FEET ABOVE GRADE AND ABOVE

### NOTE TO DESIGNER:

2023 FLORIDA BUILDING CODE SECTION 1626.2 REQUIRES THAT STRUCTURES LOCATED IN MIAMI-DADE AND BROWARD COUNTIES UTILIZE EXTERIOR WALL ASSEMBLIES THAT RESIST LARGE MISSILE IMPACTS UP TO AND INCLUDING 30 FEET IN HEIGHT ABOVE GRADE. FROM AN ELEVATION OF 30 FEET ABOVE GRADE TO THE TOP OF THE STRUCTURE, ONLY SMALL MISSILE IMPACT APPLIES AS REQUIRED IN SECTION 1626.3.

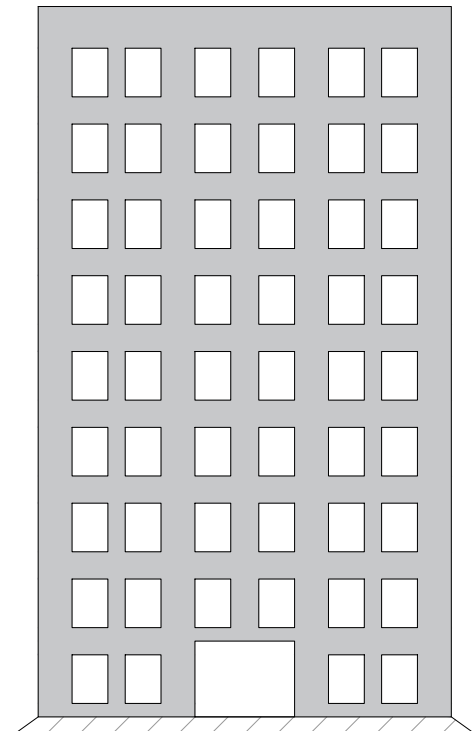
OUTSULATION SYSTEMS DESIGNATED AS "LARGE & SMALL MISSILE" ARE SPECIFICALLY APPLICABLE TO THE FIRST 30 FEET IN HEIGHT OF A STRUCTURE. AS THESE SYSTEMS ARE LISTED FOR BOTH LARGE AND SMALL MISSILE IMPACT, THEY CAN BE USED FOR THE ENTIRE HEIGHT OF A STRUCTURE; HOWEVER, FOR STRUCTURES EXHIBITING HEIGHTS MUCH GREATER THAN 30 FEET, IT MAY NOT BE ECONOMICAL TO UTILIZE A "LARGE & SMALL MISSILE" OUTSULATION ASSEMBLY ABOVE THE 30-FOOT ELEVATION. DRYVIT SUGGESTS SWITCHING TO AN OUTSULATION SYSTEM DESIGNATED AS "SMALL MISSILE" ABOVE THE 30-FOOT ELEVATION IN THESE CASES SO LONG AS THE BUILDING'S ALLOWABLE DESIGN PRESSURE DOES NOT EXCEED THAT IN OUR SMALL MISSILE OFFERING.

### NOTE:

DRYVIT AND TREMCO MAKES NO REPRESENTATION REGARDING CONFORMITY OF ITS SUGGESTIONS TO MODEL BUILDING CODES, ENGINEERING CRITERIA, SPECIFIC APPLICATIONS, OR PROJECT LOCATIONS. ALL COMPONENTS INDICATED IN ILLUSTRATIONS, AS WELL AS OTHERS THAT MAY BE REQUIRED FOR THE INTEGRITY OF THE SYSTEM SHALL BE DESIGNED, DETAILED, AND ENGINEERED BY REPRESENTATIVES OF THE ARCHITECT, OWNER, OR CONTRACTOR TO BE IN CONFORMANCE WITH MODEL CODES, ARCHITECTURAL, AND ENGINEERING REQUIREMENTS PERTAINING TO SPECIFIC BUILDING PROJECTS.



DRYVIT AND TREMCO MAKE NO WARRANTY, EXPRESSED OR IMPLIED, AS TO THE ARCHITECTURAL DESIGN, ENGINEERING, OR WORKMANSHIP OF PROJECTS UTILIZING DRYVIT SYSTEMS OR PRODUCTS.

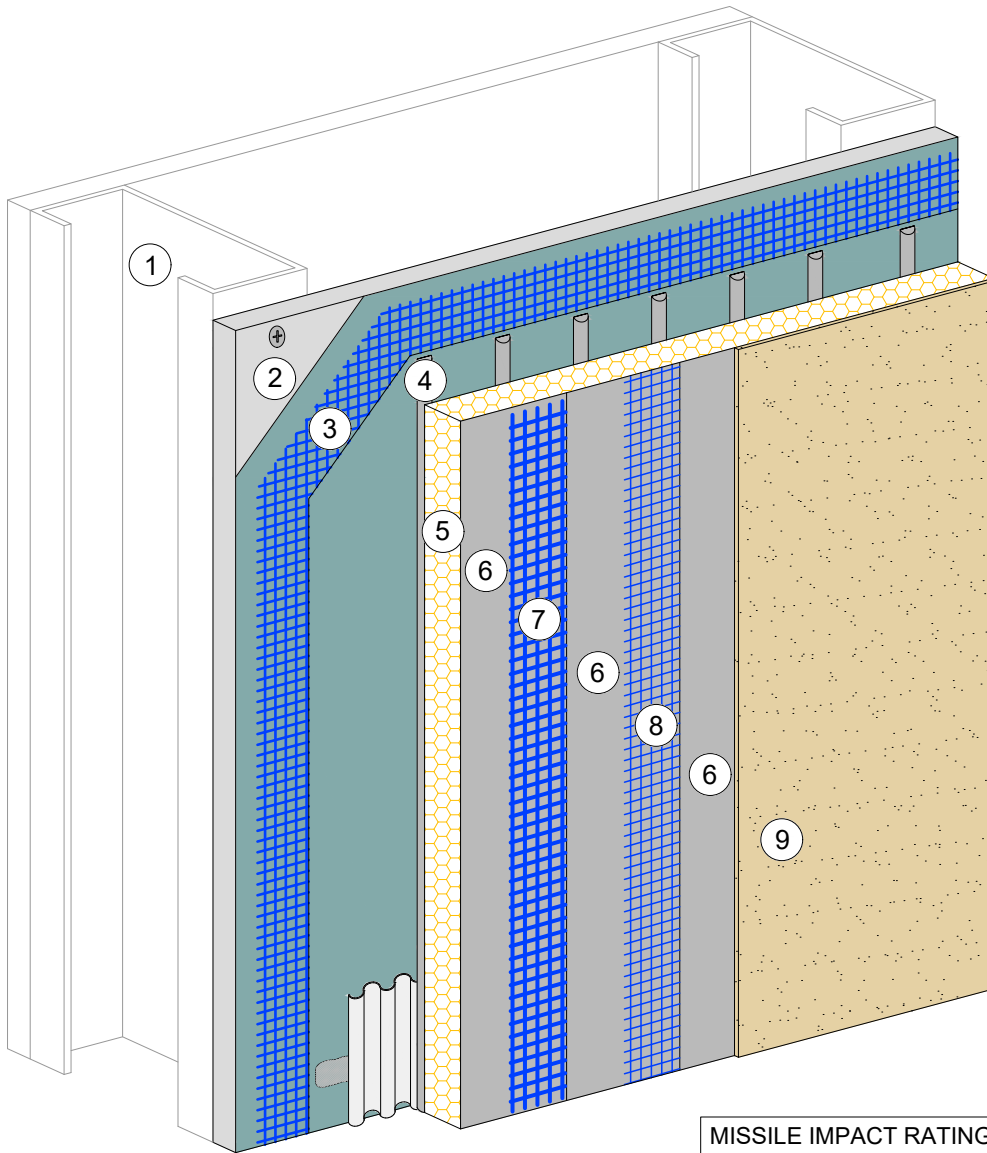
THE LIABILITIES OF DRYVIT AND TREMCO SHALL BE AS STATED IN THE DRYVIT STANDARD WARRANTY. CONTACT DRYVIT AND TREMCO FOR A FULL AND COMPLETE COPY OF THE WARRANTY.



*This detail is for general informational purposes, only. The project design professional determines, in its sole discretion, whether this detail or a functionally equivalent detail is best suited for the project with respect to any architecture, engineering, and design requirements, including any local building code requirements. If this document is not reviewed and the product is not approved for use by a licensed design professional, the customer agrees that the detail may contain substantive flaws requiring correction, and hereby releases Tremco CPG Inc. from any and all liability related to the design and installation of the product. This detail is subject to change without notice. Contact Tremco to ensure you have the most recent version.*

## Dryvit Outsulation® Systems

 Dryvit Technical Support: 800-556-7752	Detail: Table of Contents			File Name:  TOC	 Construction Products Group
	Drawn by: KAB	Checked by: CW	Scale: NTS		
	Revision #: 00	Revised by: -	Date: 6/4/2025		
	www.tremcocpg.com				



MISSILE IMPACT RATING: LARGE & SMALL

DESIGN PRESSURE:  $\pm 66.5$  PSF

#### NOTES:

1. MINIMUM 3 5/8" X 1 5/8" X 18 GAUGE STEEL STUDS AT 16" O.C.
2. MINIMUM 1/2" ASTM C1177 EXTERIOR GLASS MAT GYPSUM SHEATHING OR MIN. 1/2" SECUROCK EXOAIR 430 SHEATHING FASTENED WITH MINIMUM NO. 6 x 1 1/4" SELF TAPPING SCREWS SPACED 6" O.C.
3. DRYVIT STANDARD PLUS REINFORCING MESH (6.0 OZ/SQ YD) EMBEDDED IN DRYVIT BACKSTOP® NTX™
4. DRYVIT PRIMUS® OR GENESIS® ADHESIVE APPLIED IN VERTICAL NOTCHED TROWEL CONFIGURATION TO BACK OF EPS BOARD
5. MINIMUM 1" THICK EXPANDED POLYSTYRENE (EPS) INSULATION BOARD MEETING FBC SECTION 2612 AND DRYVIT DS131
6. DRYVIT GENESIS BASE COAT
7. DRYVIT PANZER® 20 REINFORCING MESH EMBEDDED IN DRYVIT BASE COAT
8. DRYVIT STANDARD REINFORCING MESH (4.3 OZ/SQ YD) EMBEDDED IN DRYVIT BASE COAT
9. DRYVIT FINISH
10. FOR FULL NOTICE OF ACCEPTANCE CLICK HERE: [NOA 24-0912.11](https://www.tremcocpg.com/NOA-24-0912.11)

*This detail is for general informational purposes only. The project design professional determines, in its sole discretion, whether this detail or a functionally equivalent detail is best suited for the project with respect to any architecture, engineering, and design requirements, including any local building code requirements. If this document is not reviewed and the product is not approved for use by a licensed design professional, the customer agrees that the detail may contain substantive flaws requiring correction, and hereby releases Tremco CPG Inc. from any and all liability related to the design and installation of the product. This detail is subject to change without notice. Contact Tremco to ensure you have the most recent version.*

#### Outsulation® Plus MD System

Detail: Outsulation Plus MD System over Min. 3/4" ASTM C1177 Glass Mat Exterior Gypsum or Min. 3/4" Securock ExoAir 430

Drawn by: KAB

Checked by: CW

Scale: NTS

Revision #: 00

Revised by: -

Date: 6/4/2025

File Name:

NOA 24-0912.11

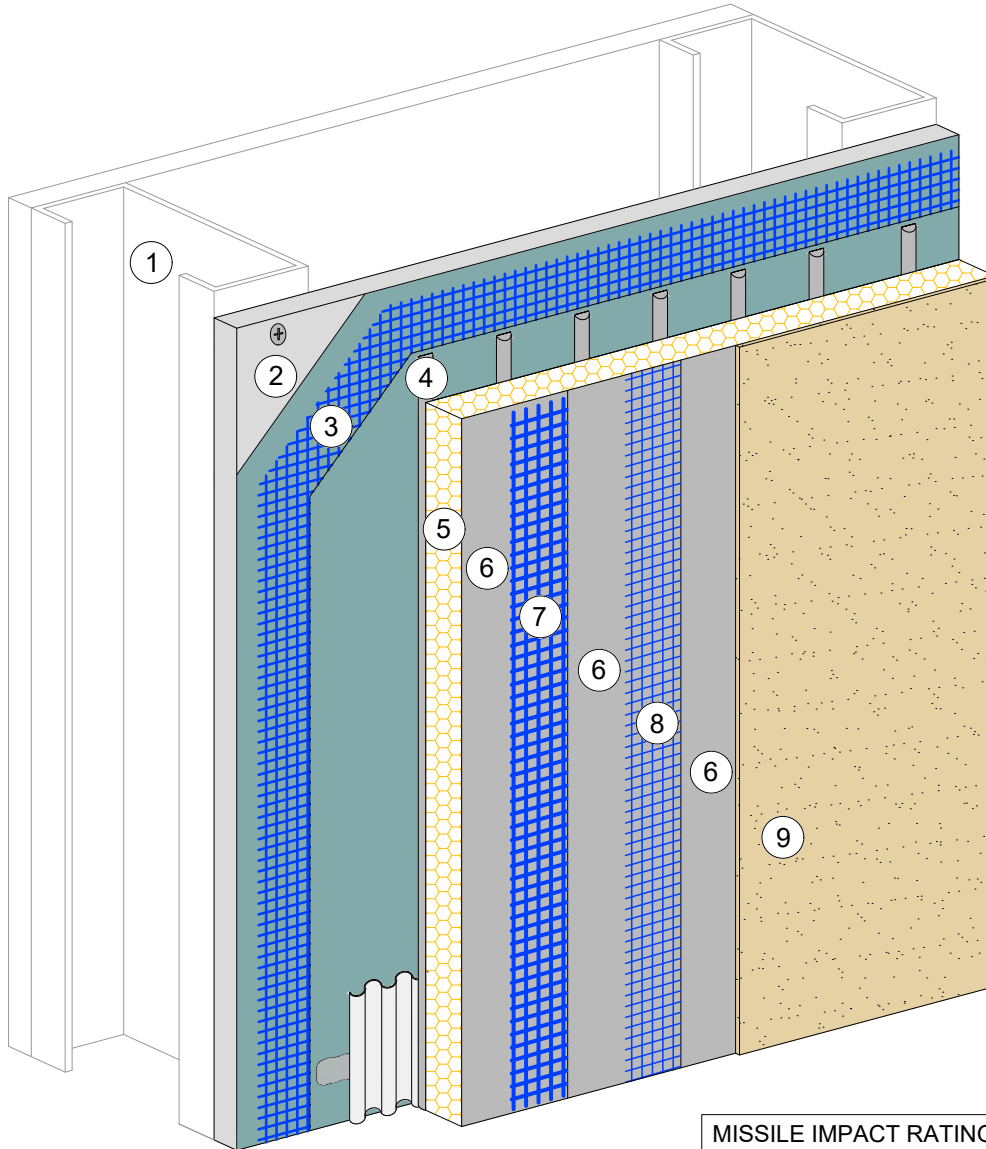


Dryvit Technical Support: 800-556-7752

[www.tremcocpg.com](https://www.tremcocpg.com)



Construction Products Group



MISSILE IMPACT RATING: LARGE & SMALL  
DESIGN PRESSURE:  $\pm 106$  PSF

#### NOTES:

1. MINIMUM 6" X 16 GAUGE STEEL STUDS AT 16" O.C.
2. MINIMUM 5/8" ASTM C1177 EXTERIOR GLASS MAT GYPSUM SHEATHING OR MIN. 5/8" SECURACK EXOAIR 430 SHEATHING FASTENED WITH MINIMUM NO. 6 x 1 1/4" BUGLE HEAD SCREWS SPACED AT 4" O.C.
3. DRYVIT STANDARD PLUS REINFORCING MESH (6.0 OZ/SQ YD) EMBEDDED IN DRYVIT BACKSTOP® NTX™
4. DRYVIT PRIMUS®, GENESIS®, OR GENESIS® DM ADHESIVE APPLIED IN VERTICAL NOTCHED TROWEL CONFIGURATION TO BACK OF EPS BOARD
5. MINIMUM 1" THICK EXPANDED POLYSTYRENE (EPS) INSULATION BOARD MEETING FBC SECTION 2612 AND DRYVIT DS131
6. DRYVIT PRIMUS, GENESIS, OR GENESIS DM BASE COAT
7. DRYVIT PANZER® 20 REINFORCING MESH (20.5 OZ/SQ YD) EMBEDDED IN DRYVIT BASE COAT
8. DRYVIT STANDARD REINFORCING MESH (4.3 OZ/SQ YD) EMBEDDED IN DRYVIT BASE COAT
9. DRYVIT FINISH
10. FOR FULL NOTICE OF ACCEPTANCE CLICK HERE: [NOA 24-0912.10](https://www.tremco.com/NOA-24-0912.10)

*This detail is for general informational purposes only. The project design professional determines, in its sole discretion, whether this detail or a functionally equivalent detail is best suited for the project with respect to any architecture, engineering, and design requirements, including any local building code requirements. If this document is not reviewed and the product is not approved for use by a licensed design professional, the customer agrees that the detail may contain substantive flaws requiring correction, and hereby releases Tremco CPG Inc. from any and all liability related to the design and installation of the product. This detail is subject to change without notice. Contact Tremco to ensure you have the most recent version.*

### Outsulation® Plus MD System

Detail: Outsulation Plus MD System over Min. 5/8" ASTM C1177 Glass Mat Exterior Gypsum or Min. 5/8" Securack ExoAir 430

Drawn by: KAB

Checked by: CW

Scale: NTS

Revision #: 00

Revised by: -

Date: 6/4/2025

File Name:

NOA 24-0912.10

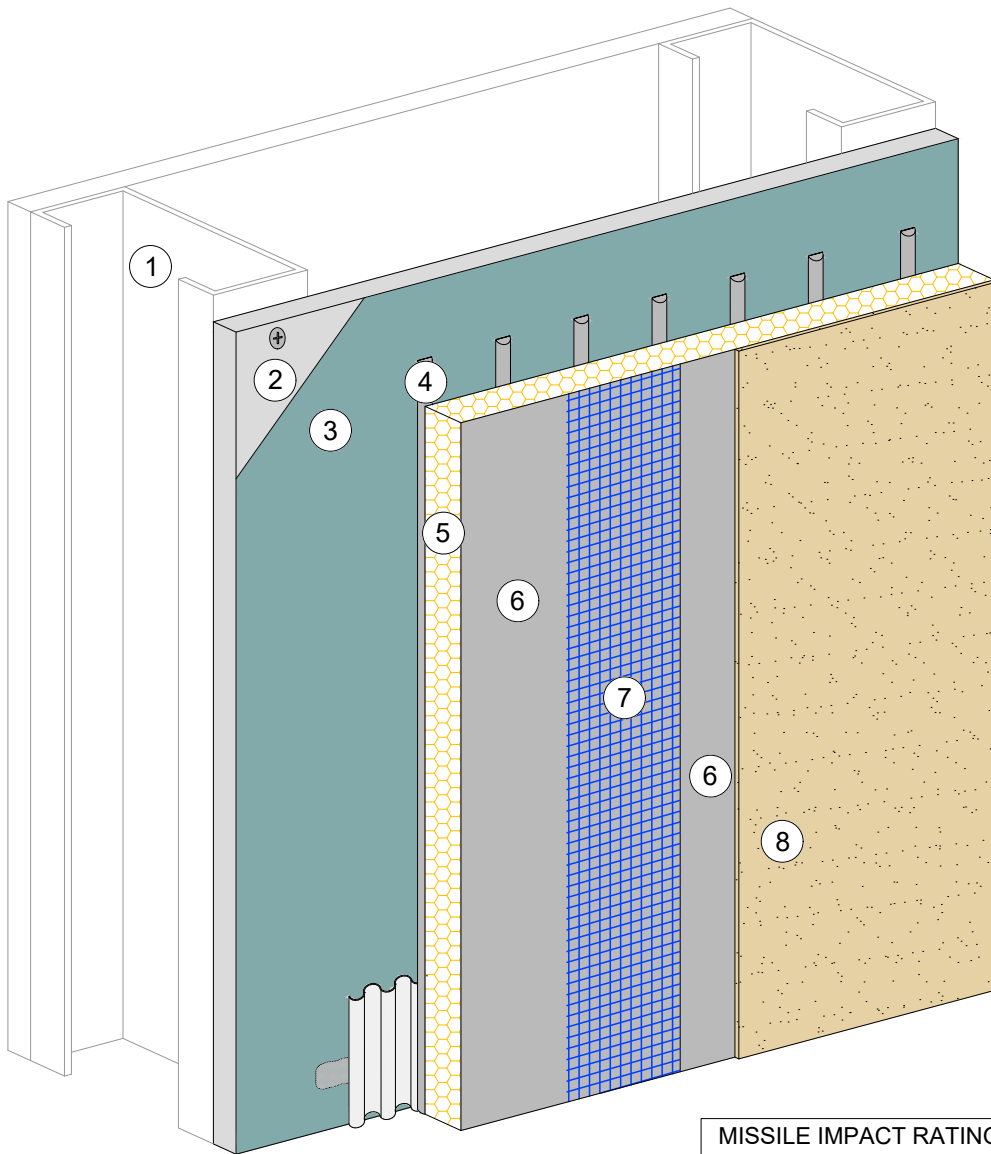


Dryvit Technical Support: 800-556-7752

[www.tremcocpg.com](https://www.tremcocpg.com)



Construction Products Group



MISSILE IMPACT RATING: SMALL MISSILE

DESIGN PRESSURE:  $\pm 93$  PSF

#### NOTES:

1. MINIMUM 3 5/8" X 18 GAUGE STEEL STUDS AT 16" O.C.
2. MINIMUM 5/8" ASTM C1177 GLASS MAT EXTERIOR GYPSUM OR MINIMUM 5/8" SECUROCK EXOAIR 430 SHEATHING FASTENED WITH MINIMUM NO. 6 1 1/4" BUGLE HEAD SCREWS SPACED 6" O.C.
3. DRYVIT BACKSTOP® NTX™; NOT NEEDED IF SECUROCK EXOAIR 430 IS USED
4. DRYVIT PRIMUS®, GENESIS®, OR GENESIS® DM ADHESIVE APPLIED IN VERTICAL NOTCHED TROWEL CONFIGURATION TO BACK OF EPS BOARD
5. MINIMUM 1" THICK EXPANDED POLYSTYRENE (EPS) INSULATION BOARD MEETING FBC SECTION 2612 AND DRYVIT DS131
6. DRYVIT PRIMUS, GENESIS, OR GENESIS DM BASE COAT
7. DRYVIT STANDARD REINFORCING MESH (4.3 OZ/SQ YD) EMBEDDED IN DRYVIT BASE COAT
8. DRYVIT FINISH or DRYVIT NEWBRICK®
9. FOR FULL NOTICE OF ACCEPTANCE CLICK HERE: [NOA 24-0912.12](https://www.tremco.com/noa-24-0912-12)

*This detail is for general informational purposes only. The project design professional determines, in its sole discretion, whether this detail or a functionally equivalent detail is best suited for the project with respect to any architecture, engineering, and design requirements, including any local building code requirements. If this document is not reviewed and the product is not approved for use by a licensed design professional, the customer agrees that the detail may contain substantive flaws requiring correction, and hereby releases Tremco CPG Inc. from any and all liability related to the design and installation of the product. This detail is subject to change without notice. Contact Tremco to ensure you have the most recent version.*

### Outsulation® Plus MD System

Detail: Outsulation Plus MD System over Min. 5/8" ASTM C1177 Glass Mat Exterior Gypsum or Min. 5/8" Securock ExoAir 430

Drawn by: KAB

Checked by: CW

Scale: NTS

Revision #: 00

Revised by: -

Date: 6/4/2025

File Name:

NOA 24-0912.12

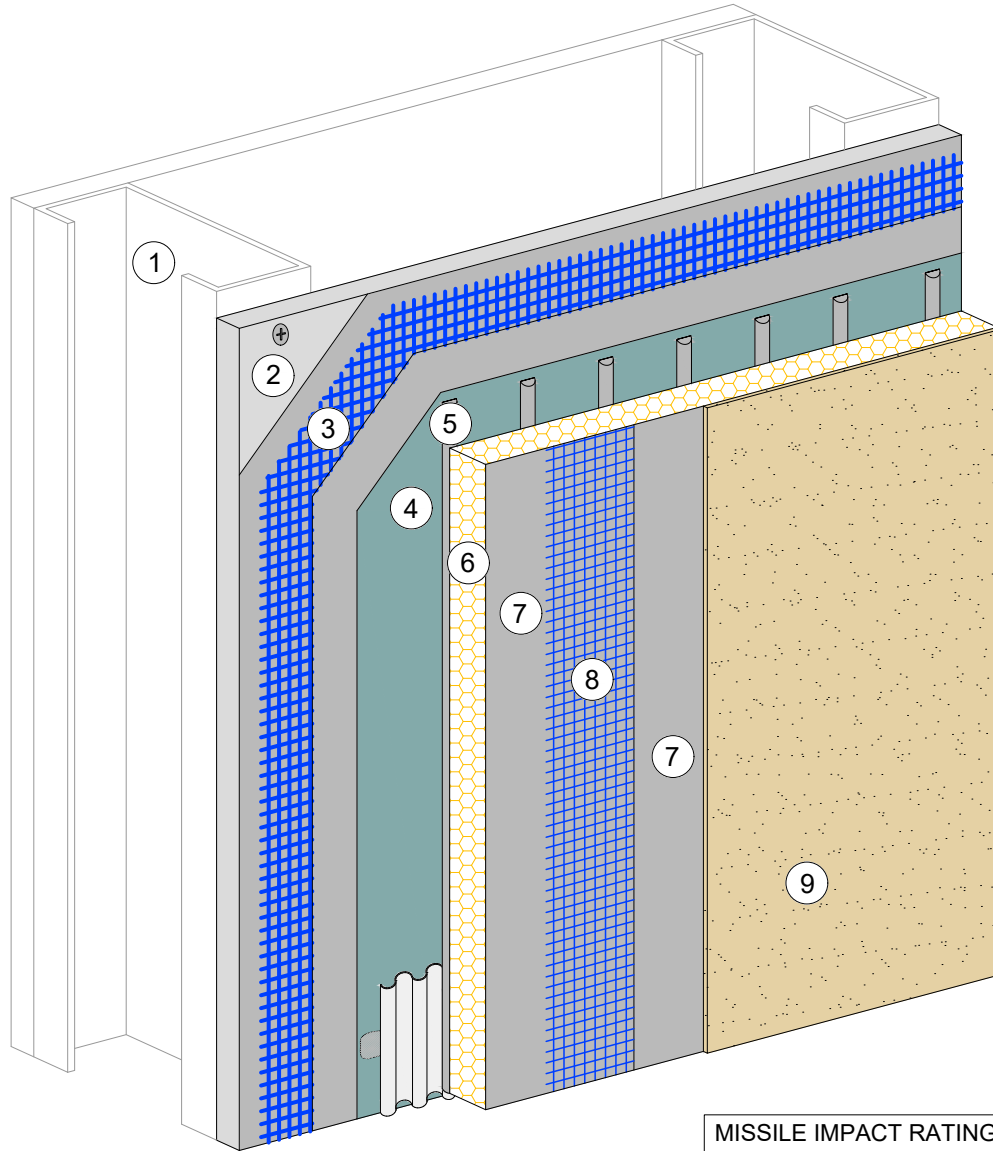


Dryvit Technical Support: 800-556-7752

[www.tremcocpg.com](https://www.tremcocpg.com)



Construction Products Group



MISSILE IMPACT RATING: LARGE & SMALL

DESIGN PRESSURE:  $\pm 110$  PSF

**NOTES:**

1. MINIMUM 3 5/8" X 18 GAUGE STEEL STUDS AT 16" O.C.
2. MINIMUM 5/8" ASTM C1177 GLASS MAT EXTERIOR GYPSUM OR MINIMUM 5/8" SECURACK EXOAIR 430 SHEATHING FASTENED WITH MINIMUM NO. 6 X 1 1/4" SELF DRILLING SCREWS SPACED 6" O.C.
3. DRYVIT PANZER® 20 REINFORCING MESH (20.5 OZ/SQ YD) EMBEDDED IN DRYVIT PRIMUS®, GENESIS®, OR GENESIS® DM BASE COAT
4. DRYVIT BACKSTOP® NTX™; NOT NEEDED IF SECURACK EXOAIR 430 IS USED
5. DRYVIT PRIMUS, GENESIS, OR GENESIS DM ADHESIVE APPLIED IN VERTICAL NOTCHED TROWEL CONFIGURATION TO BACK OF EPS BOARD
6. MINIMUM 1" THICK EXPANDED POLYSTYRENE (EPS) INSULATION BOARD MEETING FBC SECTION 2612 AND DRYVIT DS131
7. DRYVIT PRIMUS, GENESIS, OR GENESIS DM BASE COAT
8. DRYVIT STANDARD REINFORCING MESH (4.3 OZ/SQ YD) EMBEDDED IN DRYVIT BASE COAT
9. DRYVIT FINISH or DRYVIT NEWBRICK®
10. FOR FULL NOTICE OF ACCEPTANCE CLICK HERE: [NOA 24-0912.13](https://www.tremco.com/noa-24-0912.13)

*This detail is for general informational purposes only. The project design professional determines, in its sole discretion, whether this detail or a functionally equivalent detail is best suited for the project with respect to any architecture, engineering, and design requirements, including any local building code requirements. If this document is not reviewed and the product is not approved for use by a licensed design professional, the customer agrees that the detail may contain substantive flaws requiring correction, and hereby releases Tremco CPG Inc. from any and all liability related to the design and installation of the product. This detail is subject to change without notice. Contact Tremco to ensure you have the most recent version.*

**Outsulation® Plus MD System**

Detail: Outsulation Plus MD System over Min. 5/8" ASTM C1177 Glass Mat Exterior Gypsum or Min. 5/8" Securack ExoAir 430

Drawn by: KAB

Checked by: CW

Scale: NTS

Revision #: 00

Revised by: -

Date: 6/4/2025

File Name:

NOA 24-0912.13

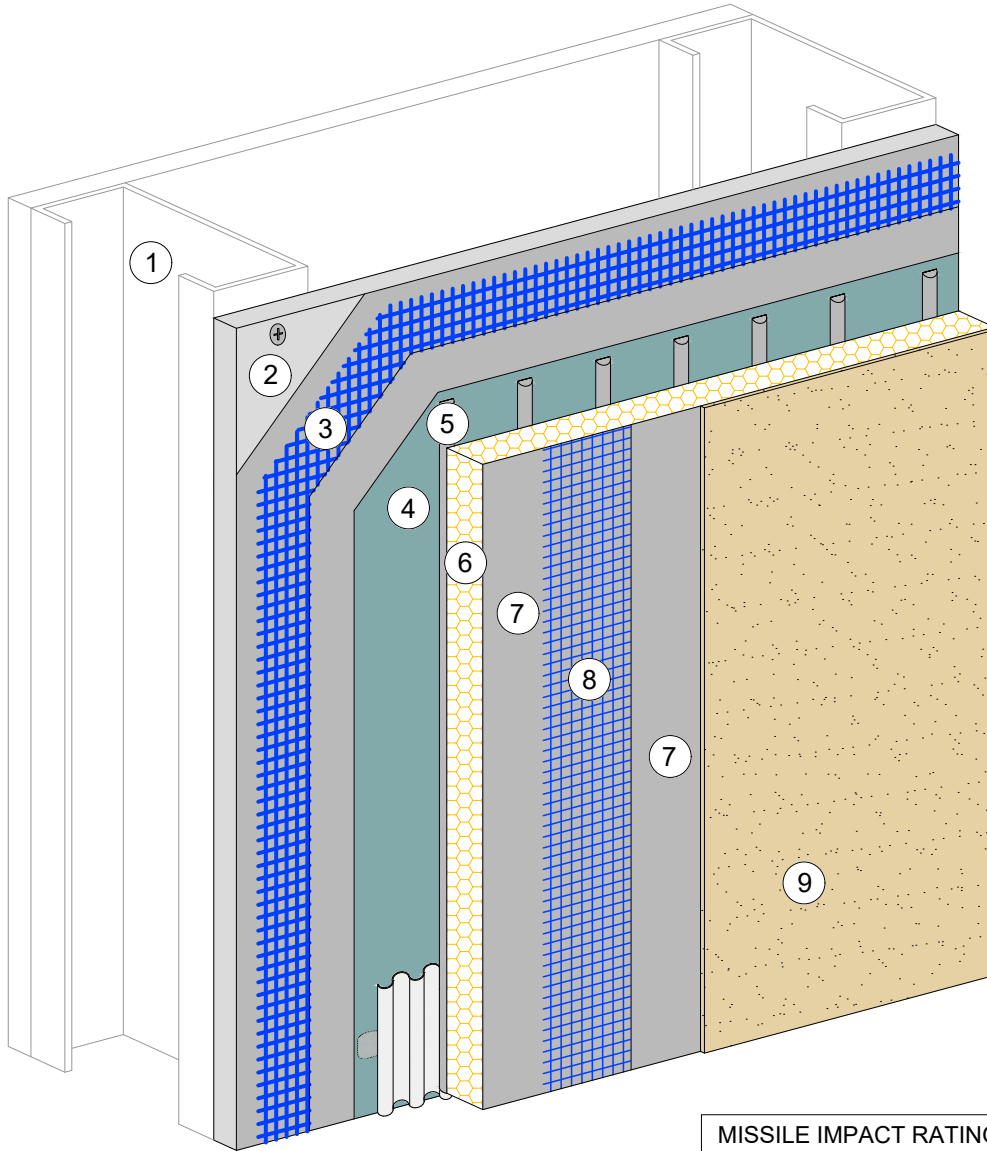


Dryvit Technical Support: 800-556-7752

[www.tremcocpg.com](https://www.tremcocpg.com)



Construction Products Group



#### MISSILE IMPACT RATING: LARGE & SMALL

##### DESIGN PRESSURE

6" O.C. SCREWS	±135 PSF
4" O.C. SCREWS	±155 PSF

#### NOTES:

1. MINIMUM 6" X 18 GAUGE STEEL STUDS AT 16" O.C.
2. MINIMUM 5/8" ASTM C1177 GLASS MAT EXTERIOR GYPSUM OR MIN 5/8" SECURACK EXOAIR 430 SHEATHING FASTENED WITH MINIMUM NO. 6 X 1 1/4" SELF DRILLING SCREWS SPACED IN ACCORDANCE WITH TABLE FOR APPLICABLE DESIGN PRESSURE
3. DRYVIT PANZER® 20 REINFORCING MESH (20.5 OZ/SQ YD) EMBEDDED IN DRYVIT PRIMUS®, GENESIS®, OR GENESIS® DM BASE COAT
4. DRYVIT BACKSTOP® NTX™; NOT NEEDED IF SECURACK EXOAIR 430 IS USED
5. DRYVIT PRIMUS, GENESIS, OR GENESIS DM ADHESIVE APPLIED IN VERTICAL NOTCHED TROWEL CONFIGURATION TO BACK OF EPS BOARD
6. MINIMUM 1" THICK EXPANDED POLYSTYRENE (EPS) INSULATION BOARD MEETING FBC SECTION 2612 AND DRYVIT DS131
7. DRYVIT PRIMUS, GENESIS, OR GENESIS DM BASE COAT
8. DRYVIT STANDARD REINFORCING MESH (4.3 OZ/SQ YD) EMBEDDED IN DRYVIT BASE COAT
9. DRYVIT FINISH or DRYVIT NEWBRICK®
10. FOR FULL NOTICE OF ACCEPTANCE CLICK HERE: [NOA 24-0912.14](https://www.tremco.com/na/091214)

*This detail is for general informational purposes, only. The project design professional determines, in its sole discretion, whether this detail or a functionally equivalent detail is best suited for the project with respect to any architecture, engineering, and design requirements, including any local building code requirements. If this document is not reviewed and the product is not approved for use by a licensed design professional, the customer agrees that the detail may contain substantive flaws requiring correction, and hereby releases Tremco CPG Inc. from any and all liability related to the design and installation of the product. This detail is subject to change without notice. Contact Tremco to ensure you have the most recent version.*

#### Outsulation® Plus MD System

Detail: Outsulation Plus MD System over Min. 5/8" ASTM C1177 Glass Mat Exterior Gypsum or Min. 5/8" Securack ExoAir 430

Drawn by: KAB

Checked by: CW

Scale: NTS

Revision #: 00

Revised by: -

Date: 6/4/2025

File Name:

NOA 24-0912.14

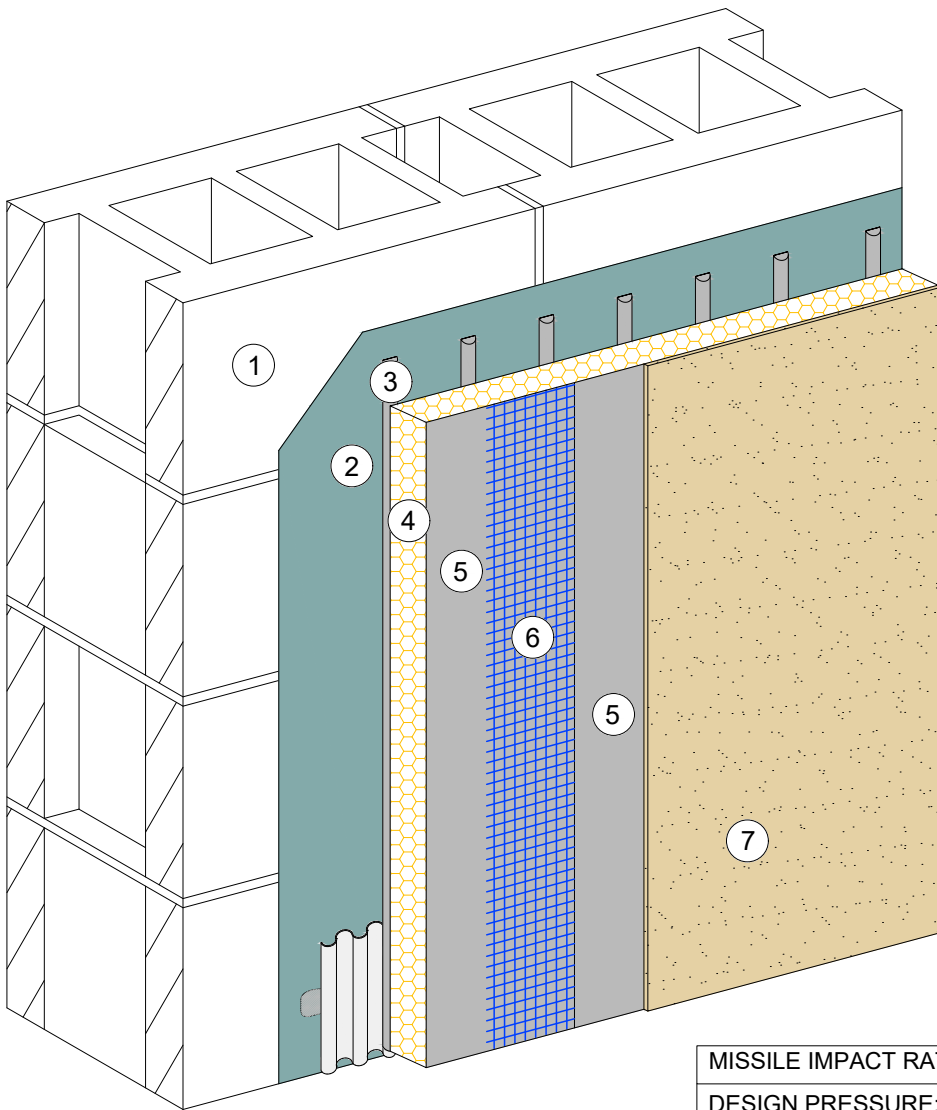


Dryvit Technical Support: 800-556-7752

[www.tremcocpg.com](https://www.tremcocpg.com)



Construction Products Group



MISSILE IMPACT RATING: LARGE & SMALL  
DESIGN PRESSURE:  $\pm 160$  PSF

NOTES:

1. CONCRETE WALL (ACI 318) CONCRETE MASONRY STRUCTURE (ASTM C90) AND TYPE S MORTAR (ASTM C270) COMPLYING WITH S.F.B.C.
2. DRYVIT BACKSTOP® NTX™
3. DRYVIT PRIMUS®, GENESIS®, OR GENESIS® DM ADHESIVE APPLIED IN VERTICAL NOTCHED TROWEL CONFIGURATION TO BACK OF EPS BOARD
4. MINIMUM 1" THICK EXPANDED POLYSTYRENE (EPS) INSULATION BOARD MEETING FBC SECTION 2612 AND DRYVIT DS131
5. DRYVIT PRIMUS, GENESIS, OR GENESIS DM BASE COAT
6. DRYVIT STANDARD REINFORCING MESH (4.3 OZ/SQ YD) EMBEDDED IN DRYVIT BASE COAT
7. DRYVIT FINISH
8. FOR FULL NOTICE OF ACCEPTANCE CLICK HERE: [NOA 23-1101.11](https://www.tremco.com/noa-23-1101.11)

*This detail is for general informational purposes only. The project design professional determines, in its sole discretion, whether this detail or a functionally equivalent detail is best suited for the project with respect to any architecture, engineering, and design requirements, including any local building code requirements. If this document is not reviewed and the product is not approved for use by a licensed design professional, the customer agrees that the detail may contain substantive flaws requiring correction, and hereby releases Tremco CPG Inc. from any and all liability related to the design and installation of the product. This detail is subject to change without notice. Contact Tremco to ensure you have the most recent version.*

**Outsulation® Plus MD System**

Detail: Outsulation Plus MD System over Concrete or Concrete Block

File Name:

Drawn by: KAB

Checked by: CW

Scale: NTS

NOA 23-1101.11

Revision #: 00

Revised by: -

Date: 6/4/2025

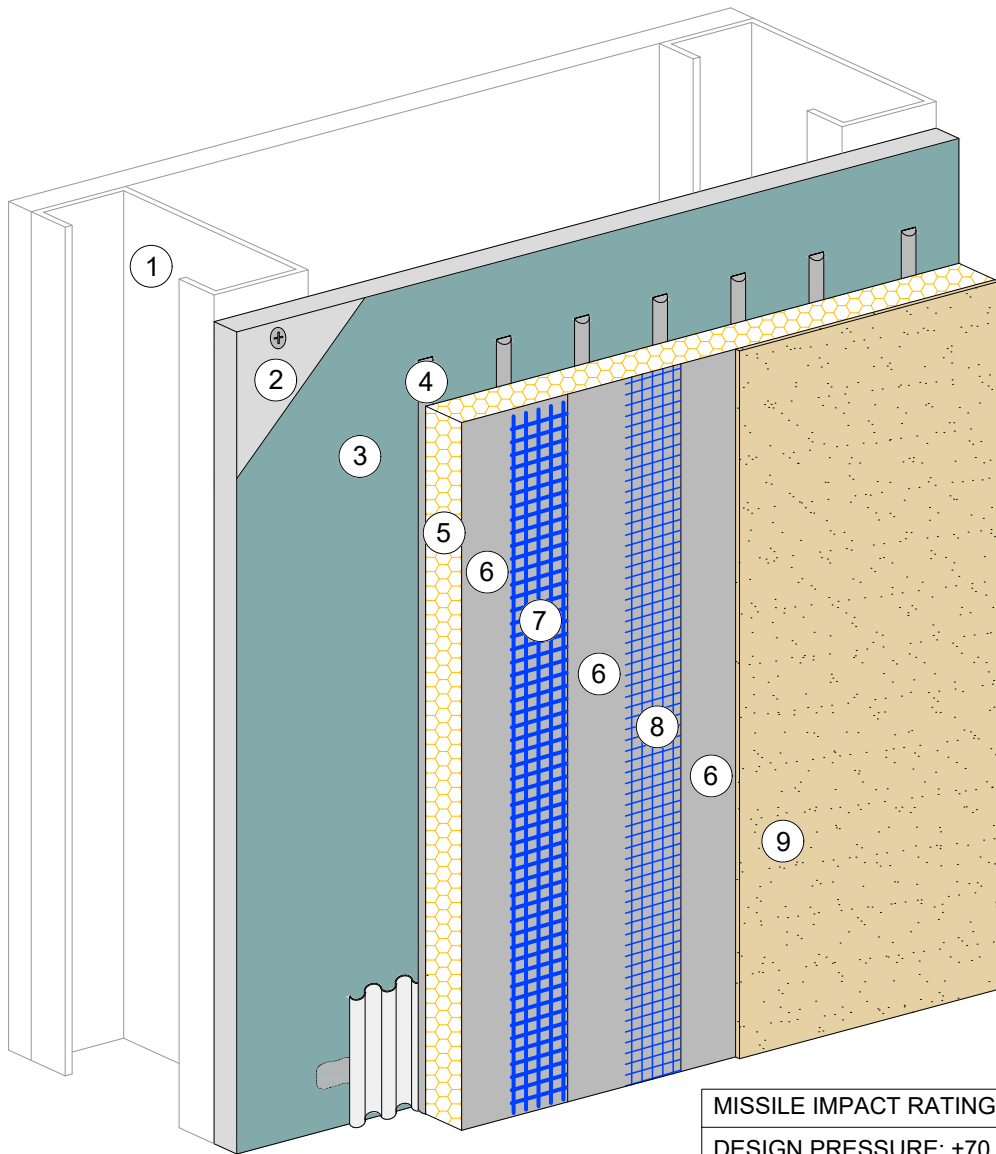
[www.tremcocpg.com](http://www.tremcocpg.com)



Dryvit Technical Support: 800-556-7752



Construction Products Group



MISSILE IMPACT RATING: LARGE & SMALL  
DESIGN PRESSURE: ±70 PSF

#### NOTES:

1. MINIMUM 3 5/8" X 18 GAUGE STEEL STUDS AT 16" O.C.
2. MINIMUM 1/2" ASTM C1177 GLASS MAT EXTERIOR GYPSUM OR MINIMUM 1/2" SECURACK EXOAIR 430 SHEATHING FASTENED WITH MINIMUM NO. 6 X 1" SELF DRILLING SCREWS SPACED 6" O.C.
3. DRYVIT BACKSTOP® NTX™; NOT NEEDED IF SECURACK EXOAIR 430 IS USED
4. DRYVIT PRIMUS®, GENESIS®, OR GENESIS® DM ADHESIVE APPLIED IN VERTICAL NOTCHED TROWEL CONFIGURATION TO BACK OF EPS BOARD
5. MINIMUM 1" THICK EXPANDED POLYSTYRENE (EPS) INSULATION BOARD MEETING FBC SECTION 2612 AND DRYVIT DS131
6. DRYVIT PRIMUS, GENESIS, OR GENESIS DM BASE COAT
7. DRYVIT PANZER® 20 REINFORCING MESH (20.5 OZ/SQ YD) EMBEDDED IN DRYVIT BASE COAT
8. DRYVIT STANDARD REINFORCING MESH (4.3 OZ/SQ YD) EMBEDDED IN DRYVIT BASE COAT
9. DRYVIT FINISH or DRYVIT NEWBRICK®
10. FOR FULL NOTICE OF ACCEPTANCE CLICK HERE: [NOA 24-0912.08](https://www.tremco.com/noa-24-0912-08)

*This detail is for general informational purposes only. The project design professional determines, in its sole discretion, whether this detail or a functionally equivalent detail is best suited for the project with respect to any architecture, engineering, and design requirements, including any local building code requirements. If this document is not reviewed and the product is not approved for use by a licensed design professional, the customer agrees that the detail may contain substantive flaws requiring correction, and hereby releases Tremco CPG Inc. from any and all liability related to the design and installation of the product. This detail is subject to change without notice. Contact Tremco to ensure you have the most recent version.*

#### Outsulation® Plus MD System

Detail: Outsulation Plus MD System over Min. 3/4" ASTM C1177 Glass Mat Exterior Gypsum or Min. 1/2" Securack ExoAir 430

Drawn by: KAB

Checked by: CW

Scale: NTS

Revision #: 00

Revised by: -

Date: 6/4/2025

File Name:

NOA 24-0912.08

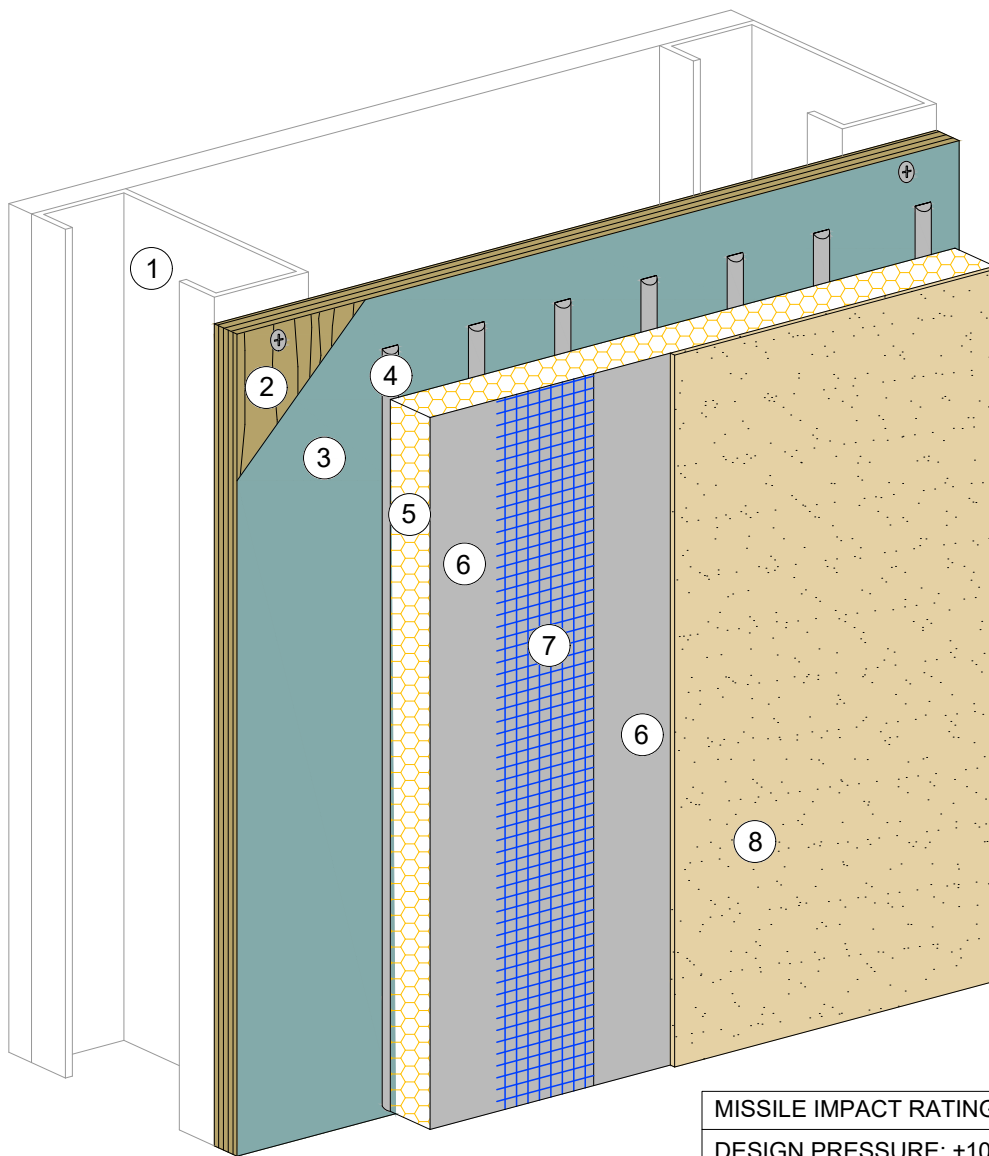


Dryvit Technical Support: 800-556-7752

[www.tremcocpg.com](https://www.tremcocpg.com)



Construction Products Group



MISSILE IMPACT RATING: LARGE & SMALL  
DESIGN PRESSURE: ±100 PSF

**NOTES:**

1. MINIMUM 3 5/8" X 1 5/8 X 18 GAUGE STEEL STUDS AT 16" O.C.
2. MINIMUM 5/8" 5 PLY PLYWOOD FASTENED WITH MINIMUM NO. 6 X 1 1/4" SELF DRILLING SCREWS SPACED AT 6" O.C.
3. DRYVIT BACKSTOP® NTX™
4. DRYVIT PRIMUS® OR GENESIS® ADHESIVE APPLIED IN VERTICAL NOTCHED TROWEL CONFIGURATION TO BACK OF EPS BOARD
5. MINIMUM 1" THICK EXPANDED POLYSTYRENE (EPS) INSULATION BOARD MEETING FBC SECTION 2612 AND DRYVIT DS131
6. DRYVIT PRIMUS, GENESIS, OR GENESIS DM® BASE COAT
7. DRYVIT STANDARD REINFORCING MESH (4.3 OZ/SQ YD) EMBEDDED IN DRYVIT BASE COAT
8. DRYVIT FINISH
9. FOR FULL NOTICE OF ACCEPTANCE CLICK HERE: [NOA 23-1101.10](https://www.tremcocpg.com/noa-23-1101.10)

This detail is for general informational purposes only. The project design professional determines, in its sole discretion, whether this detail or a functionally equivalent detail is best suited for the project with respect to any architecture, engineering, and design requirements, including any local building code requirements. If this document is not reviewed and the product is not approved for use by a licensed design professional, the customer agrees that the detail may contain substantive flaws requiring correction, and hereby releases Tremco CPG Inc. from any and all liability related to the design and installation of the product. This detail is subject to change without notice. Contact Tremco to ensure you have the most recent version.

**Outsulation® Plus MD System**

Detail: Outsulation Plus MD System over 5/8" 5-Ply Plywood

File Name:

Drawn by: KAB

Checked by: CW

Scale: NTS

NOA 23-1101.10

Revision #: 00

Revised by: -

Date: 6/4/2025

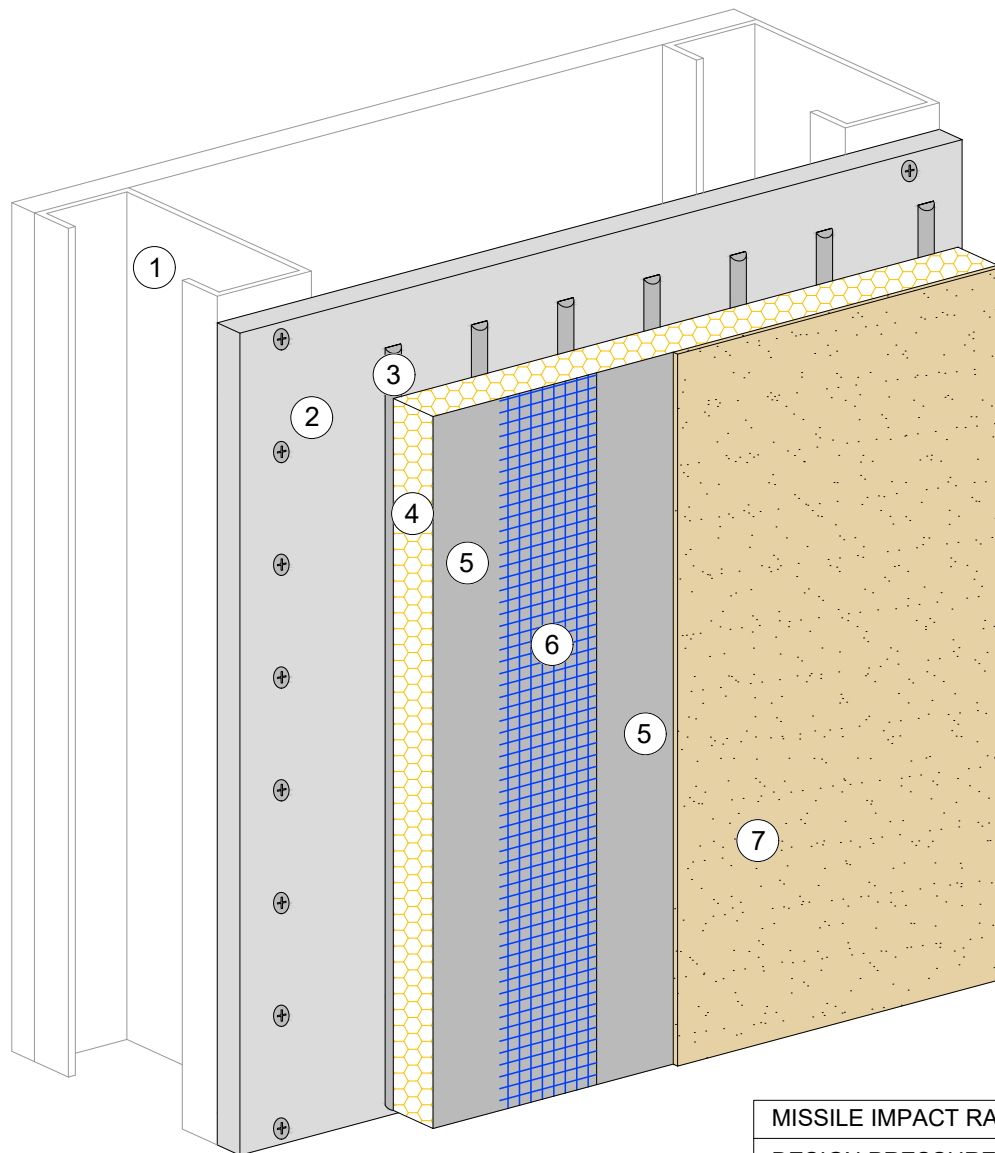
[www.tremcocpg.com](https://www.tremcocpg.com)



Dryvit Technical Support: 800-556-7752



Construction Products Group



MISSILE IMPACT RATING: SMALL MISSILE

DESIGN PRESSURE:  $\pm 93$  PSF

**NOTES:**

1. MINIMUM 3 5/8" X 18 GAUGE STEEL STUDS AT 16" O.C.
2. MINIMUM 5/8" ASTM C 1177 GLASS MAT EXTERIOR GYPSUM SHEATHING FASTENED WITH NO. 6 X 1 1/4" BUGLE HEAD SCREWS SPACED 6" O.C.
3. DRYVIT PRIMUS®, GENESIS®, OR GENESIS® DM ADHESIVE APPLIED IN VERTICAL NOTCHED TROWEL CONFIGURATION TO BACK OF EPS BOARD
4. MINIMUM 1" THICK EXPANDED POLYSTYRENE (EPS) INSULATION BOARD MEETING FBC SECTION 2612 AND DRYVIT DS131
5. DRYVIT PRIMUS, GENESIS, OR GENESIS DM BASE COAT
6. DRYVIT STANDARD REINFORCING MESH (4.3 OZ/SQ YD) EMBEDDED IN DRYVIT BASE COAT
7. DRYVIT FINISH
8. FOR FULL NOTICE OF ACCEPTANCE CLICK HERE: [NOA 24-0912.12](#)

*This detail is for general informational purposes only. The project design professional determines, in its sole discretion, whether this detail or a functionally equivalent detail is best suited for the project with respect to any architecture, engineering, and design requirements, including any local building code requirements. If this document is not reviewed and the product is not approved for use by a licensed design professional, the customer agrees that the detail may contain substantive flaws requiring correction, and hereby releases Tremco CPG Inc. from any and all liability related to the design and installation of the product. This detail is subject to change without notice. Contact Tremco to ensure you have the most recent version.*

**Outsulation® System**



Dryvit Technical Support: 800-556-7752

Detail: Outsulation System over Min. 5/8" ASTM C1177 Glass Mat Exterior Gypsum

Drawn by: KAB

Checked by: CW

Scale: NTS

Revision #: 00

Revised by: -

Date: 6/4/2025

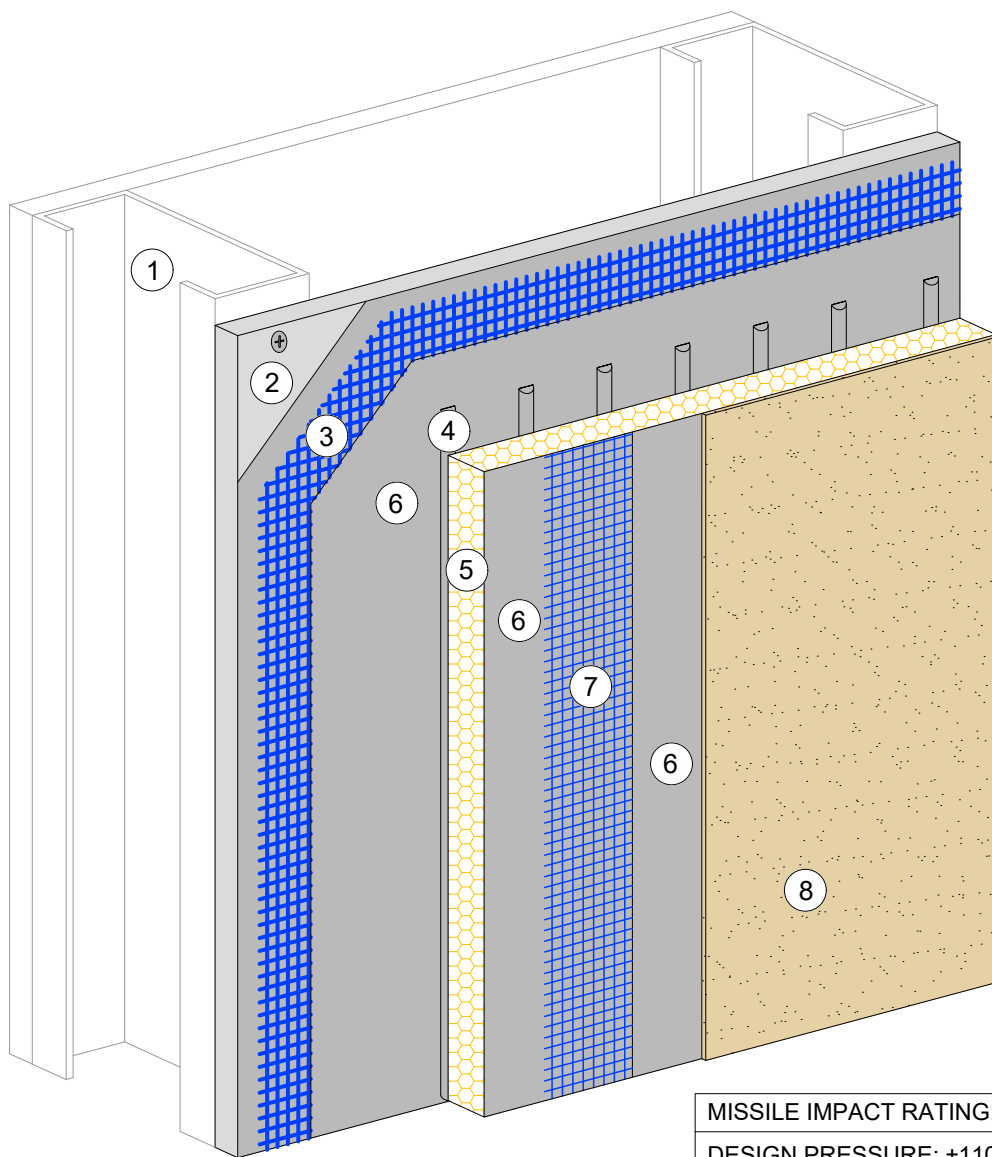
File Name:

NOA 24-0912.12

[www.tremcocpg.com](http://www.tremcocpg.com)



Construction Products Group



MISSILE IMPACT RATING: LARGE & SMALL



DESIGN PRESSURE:  $\pm 110$  PSF

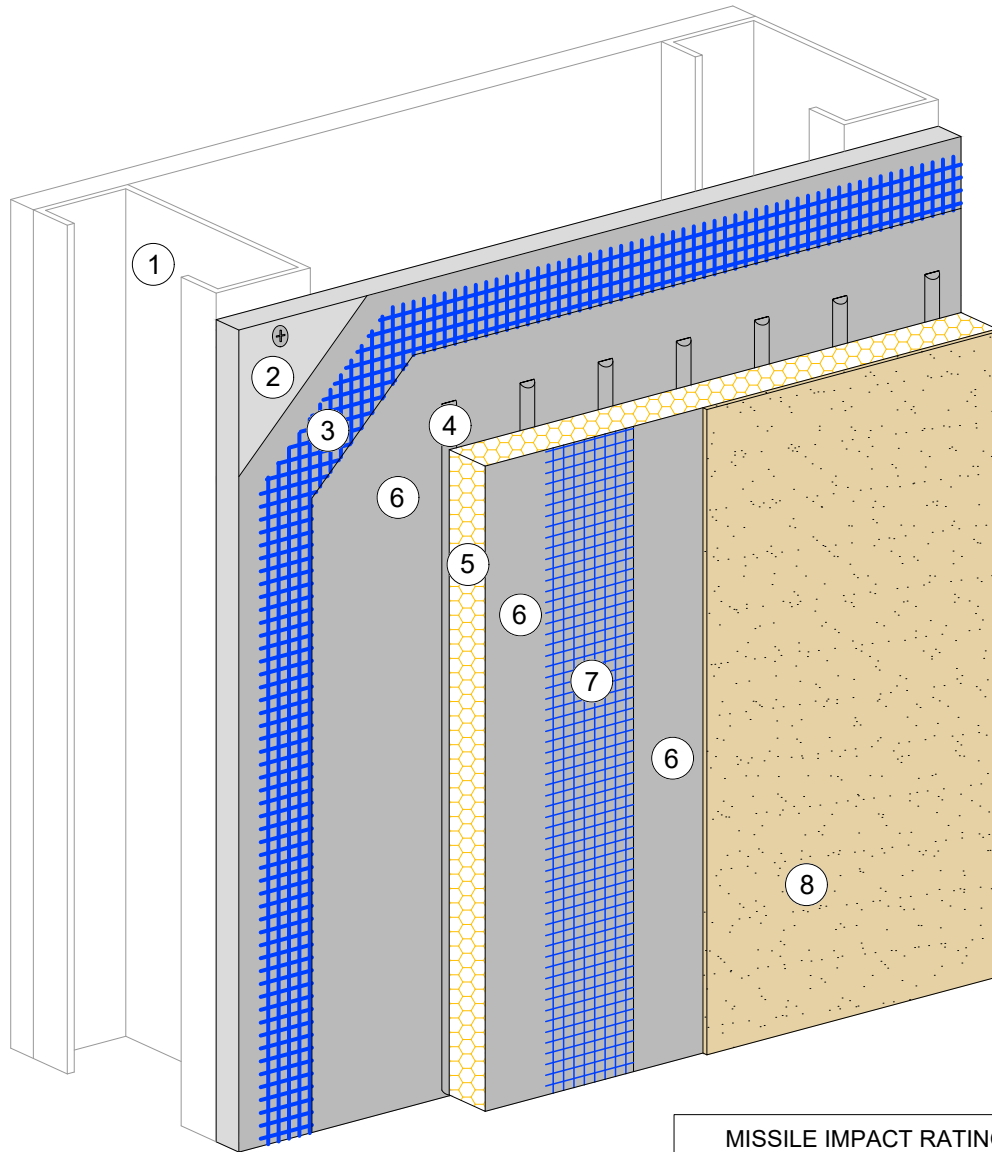
#### NOTES:

1. MINIMUM 3 5/8" X 18 GAUGE STEEL STUDS AT 16" O.C.
2. MINIMUM 5/8" GLASS MAT EXTERIOR GYPSUM SHEATHING FASTENED WITH MINIMUM NO. 6 X 1 1/4" SELF DRILLING SCREWS SPACED 6" O.C.
3. DRYVIT PANZER® 20 REINFORCING MESH (20.5 OZ/SQ YD) EMBEDDED IN DRYVIT PRIMUS®, GENESIS®, OR GENESIS® DM BASE COAT
4. DRYVIT PRIMUS, GENESIS, OR GENESIS DM ADHESIVE APPLIED IN VERTICAL NOTCHED TROWEL CONFIGURATION TO BACK OF EPS BOARD
5. MINIMUM 1" THICK EXPANDED POLYSTYRENE (EPS) INSULATION BOARD MEETING FBC SECTION 2612 AND DRYVIT DS131
6. DRYVIT PRIMUS, GENESIS, OR GENESIS DM BASE COAT
7. DRYVIT STANDARD REINFORCING MESH (4.3 OZ/SQ YD) EMBEDDED IN DRYVIT BASE COAT
8. DRYVIT FINISH
9. FOR FULL NOTICE OF ACCEPTANCE CLICK HERE: [NOA 24-0912.13](https://www.tremcocpg.com/noa-24-0912-13)

*This detail is for general informational purposes, only. The project design professional determines, in its sole discretion, whether this detail or a functionally equivalent detail is best suited for the project with respect to any architecture, engineering, and design requirements, including any local building code requirements. If this document is not reviewed and the product is not approved for use by a licensed design professional, the customer agrees that the detail may contain substantive flaws requiring correction, and hereby releases Tremco CPG Inc. from any and all liability related to the design and installation of the product. This detail is subject to change without notice. Contact Tremco to ensure you have the most recent version.*

#### Outsulution® System

 Dryvit Technical Support: 800-556-7752	Detail: Outsulation System over Min. 5/8" ASTM C1177 Glass Mat Exterior Gypsum			File Name:
	Drawn by: KAB	Checked by: CW	Scale: NTS	NOA 24-0912.13
	Revision #: 00	Revised by: -	Date: 6/4/2025	
	www.tremcoccpa.com			
				 Construction Products Group



# MISSILE IMPACT RATING: LARGE & SMALL

## DESIGN PRESSURE

6" O.C. SCREWS	±135 PSF
4" O.C. SCREWS	±155 PSF

### NOTES:

1. MINIMUM 6" X 18 GAUGE STEEL STUDS AT 16" O.C.
2. MINIMUM 5/8" GLASS MAT EXTERIOR GYPSUM SHEATHING FASTENED WITH MINIMUM NO. 6 X 1 1/4" SELF DRILLING SCREWS SPACED IN ACCORDANCE WITH TABLE FOR APPLICABLE DESIGN PRESSURE
3. DRYVIT PANZER® 20 REINFORCING MESH (20.5 OZ/SQ YD) EMBEDDED IN DRYVIT PRIMUS®, GENESIS®, OR GENESIS® DM BASE COAT
4. DRYVIT PRIMUS, GENESIS, OR GENESIS DM ADHESIVE APPLIED IN VERTICAL NOTCHED TROWEL CONFIGURATION TO BACK OF EPS BOARD
5. MINIMUM 1" THICK EXPANDED POLYSTYRENE (EPS) INSULATION BOARD MEETING FBC SECTION 2612 AND DRYVIT DS131
6. DRYVIT PRIMUS, GENESIS, OR GENESIS DM BASE COAT
7. DRYVIT STANDARD REINFORCING MESH (4.3 OZ/SQ YD) EMBEDDED IN DRYVIT BASE COAT
8. DRYVIT FINISH
9. FOR FULL NOTICE OF ACCEPTANCE CLICK HERE: [NOA 24-0912.14](#)

*This detail is for general informational purposes only. The project design professional determines, in its sole discretion, whether this detail or a functionally equivalent detail is best suited for the project with respect to any architecture, engineering, and design requirements, including any local building code requirements. If this document is not reviewed and the product is not approved for use by a licensed design professional, the customer agrees that the detail may contain substantive flaws requiring correction, and hereby releases Tremco CPG Inc. from any and all liability related to the design and installation of the product. This detail is subject to change without notice. Contact Tremco to ensure you have the most recent version.*

## Outsulation® System



Dryvit Technical Support: 800-556-7752

Detail: Outsulation System over Min. 5/8" ASTM C1177 Glass Mat Exterior Gypsum

Drawn by: KAB

Checked by: CW

Scale: NTS

Revision #: 00

Revised by: -

Date: 6/4/2025

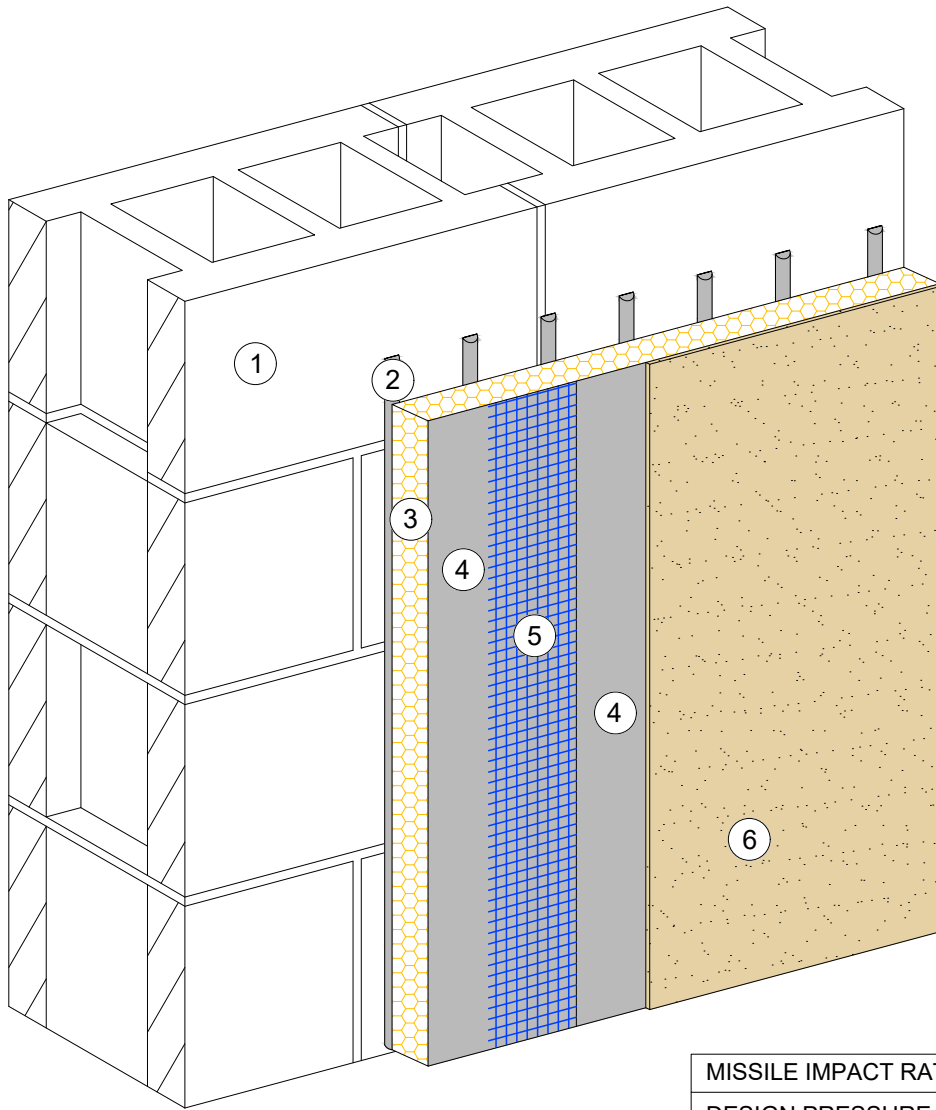
File Name:

NOA 24-0912.14

[www.tremcocpg.com](http://www.tremcocpg.com)



Construction Products Group



MISSILE IMPACT RATING: LARGE & SMALL  
DESIGN PRESSURE:  $\pm 160$  PSF

NOTES:

1. CONCRETE WALL (ACI 318) CONCRETE MASONRY STRUCTURE (ASTM C90) AND TYPE S MORTAR (ASTM C270) COMPLYING WITH S.F.B.C.
2. DRYVIT PRIMUS®, GENESIS®, OR GENESIS® DM ADHESIVE APPLIED IN VERTICAL NOTCHED TROWEL CONFIGURATION TO BACK OF EPS BOARD
3. MINIMUM 1" THICK EXPANDED POLYSTYRENE (EPS) INSULATION BOARD MEETING FBC SECTION 2612 AND DRYVIT DS131
4. DRYVIT PRIMUS, GENESIS, OR GENESIS DM BASE COAT
5. DRYVIT STANDARD REINFORCING MESH (4.3 OZ/SQ YD) EMBEDDED IN DRYVIT BASE COAT
6. DRYVIT FINISH
7. FOR FULL NOTICE OF ACCEPTANCE CLICK HERE: [NOA 23-1101.11](https://www.tremco.com/noa-23-1101.11)

*This detail is for general informational purposes only. The project design professional determines, in its sole discretion, whether this detail or a functionally equivalent detail is best suited for the project with respect to any architecture, engineering, and design requirements, including any local building code requirements. If this document is not reviewed and the product is not approved for use by a licensed design professional, the customer agrees that the detail may contain substantive flaws requiring correction, and hereby releases Tremco CPG Inc. from any and all liability related to the design and installation of the product. This detail is subject to change without notice. Contact Tremco to ensure you have the most recent version.*

**Outsulation® System**

Detail: Outsulation System over Concrete or Concrete Block

File Name:

Drawn by: KAB

Checked by: CW

Scale: NTS

NOA 23-1101.11

Revision #: 00

Revised by: -

Date: 6/4/2025

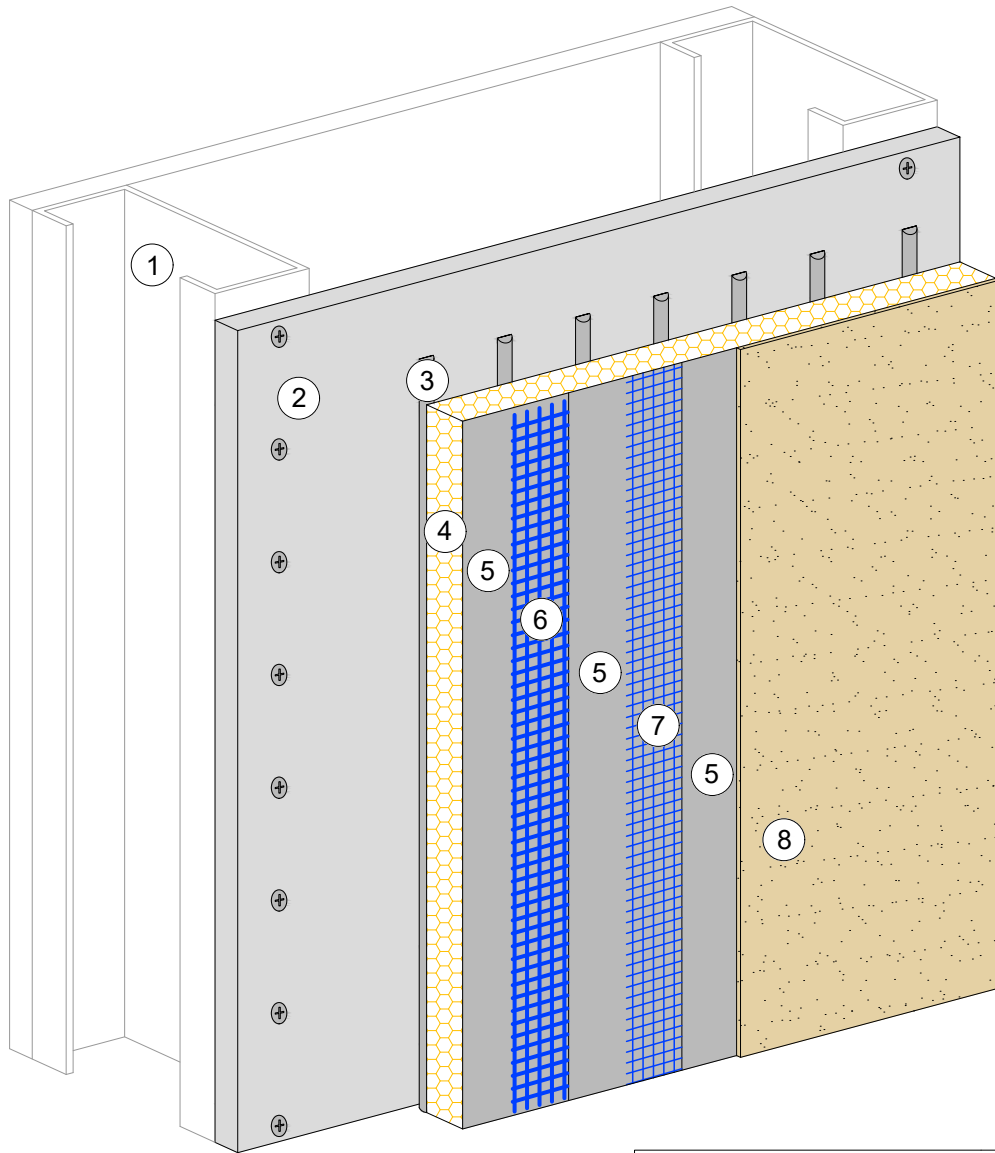
[www.tremcocpg.com](https://www.tremcocpg.com)



Dryvit Technical Support: 800-556-7752



Construction Products Group



MISSILE IMPACT RATING: LARGE & SMALL

DESIGN PRESSURE:  $\pm 70$  PSF

#### NOTES:

1. 3 5/8" X 18 GAUGE STEEL STUDS AT 16" O.C.
2. 1/2" ASTM C 1177 GLASS MAT EXTERIOR GYPSUM SHEATHING FASTENED WITH NO. 6 X 1" SELF DRILLING SCREWS SPACED 6" O.C.
3. DRYVIT PRIMUS®, GENESIS®, OR GENESIS® DM ADHESIVE APPLIED IN VERTICAL NOTCHED TROWEL CONFIGURATION TO BACK OF EPS BOARD
4. MINIMUM 1" THICK EXPANDED POLYSTYRENE (EPS) INSULATION BOARD MEETING FBC SECTION 2612 AND DRYVIT DS131, ADHERED WITH DRYVIT GENESIS ADHESIVE
5. DRYVIT PRIMUS, GENESIS, OR GENESIS DM BASE COAT
6. DRYVIT PANZER® 20 REINFORCING MESH (20.5 OZ/SQ YD) EMBEDDED IN DRYVIT BASE COAT
7. DRYVIT STANDARD REINFORCING MESH (4.3 OZ/SQ YD) EMBEDDED IN DRYVIT BASE COAT
8. DRYVIT FINISH or DRYVIT NEWBRICK®
9. FOR FULL NOTICE OF ACCEPTANCE CLICK HERE: [NOA 24-0912.08](https://www.tremco.com/noa-24-0912-08)

*This detail is for general informational purposes only. The project design professional determines, in its sole discretion, whether this detail or a functionally equivalent detail is best suited for the project with respect to any architecture, engineering, and design requirements, including any local building code requirements. If this document is not reviewed and the product is not approved for use by a licensed design professional, the customer agrees that the detail may contain substantive flaws requiring correction, and hereby releases Tremco CPG Inc. from any and all liability related to the design and installation of the product. This detail is subject to change without notice. Contact Tremco to ensure you have the most recent version.*

#### Outsulation® System

Detail: Outsulation System over Min. 1/2" ASTM C1177 Glass Mat Exterior Gypsum

File Name:

Drawn by: KAB

Checked by: CW

Scale: NTS

NOA 24-0912.08

Revision #: 00

Revised by: -

Date: 6/4/2025

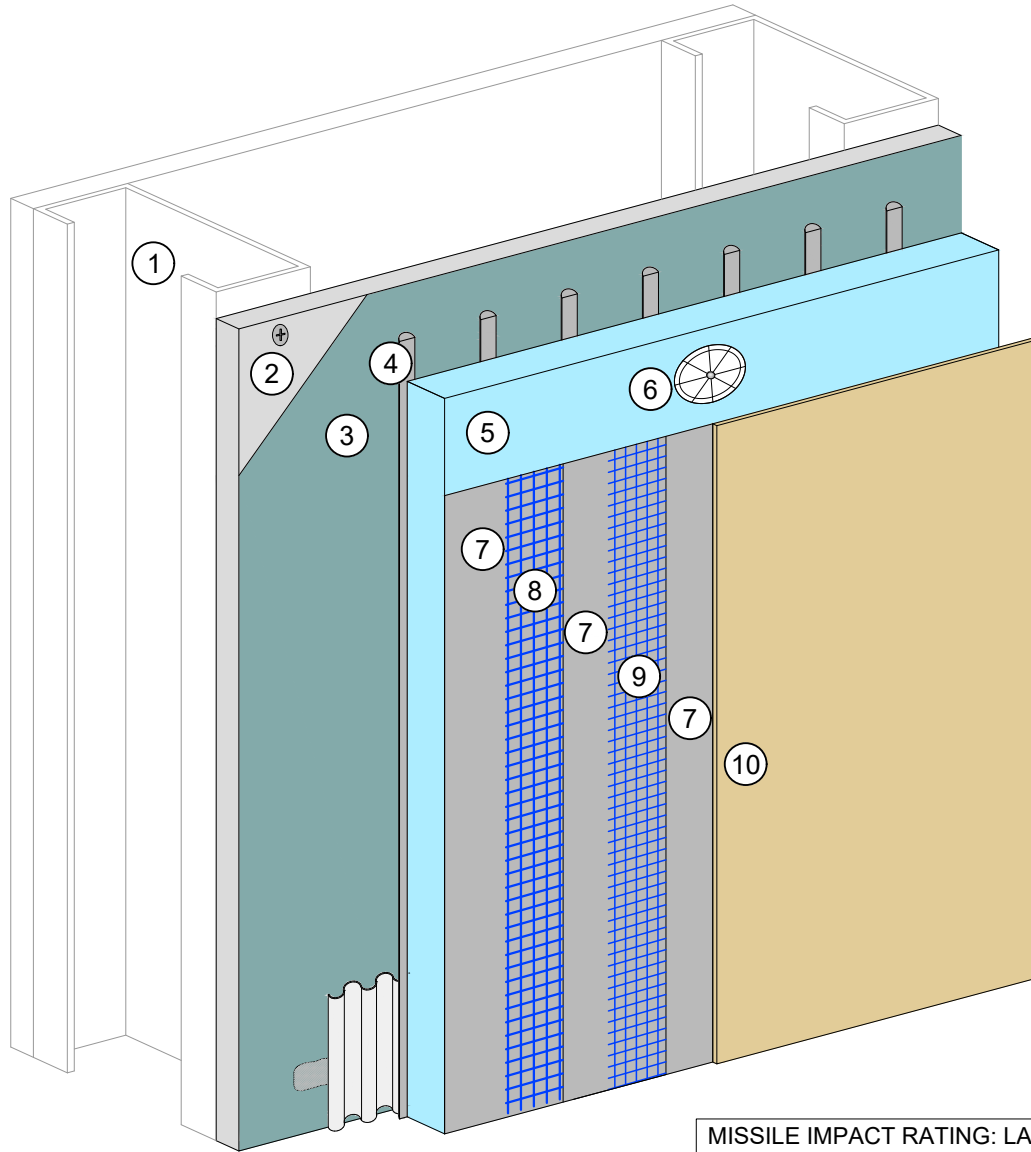
[www.tremcocpg.com](https://www.tremcocpg.com)



Dryvit Technical Support: 800-556-7752



Construction Products Group



MISSILE IMPACT RATING: LARGE & SMALL

DESIGN PRESSURE:  $\pm 93$  PSF

**NOTES:**

1. MINIMUM 3 5/8" X 18 GAUGE STEEL STUDS AT 16" O.C.
2. MINIMUM 5/8" ASTM C 1177 GLASS MAT EXTERIOR GYPSUM SHEATHING OR MINIMUM 5/8" SECUROCK EXOAIR 430 SHEATHING FASTENED WITH MINIMUM NO. 6 X 1 1/4" SELF DRILLING SCREWS SPACED 6" O.C.
3. DRYVIT BACKSTOP® NT OR BACKSTOP® NTX™; NOT NEEDED IF SECUROCK EXOAIR 430 IS USED
4. DRYVIT GENESIS® ADHESIVE APPLIED IN VERTICAL NOTCHED TROWEL CONFIGURATION TO BACK OF EPS BOARD
5. MINIMUM 1" THICK EXTRUDED POLYSTYRENE (XPS) INSULATION BOARD MEETING FBC SECTION 2612 AND DRYVIT DS131
6. WIND-LOCK® WIND-DEVIL 2 FASTENERS- 4 PER 2'-0" X 4'-0" BOARD
7. DRYVIT GENESIS BASE COAT
8. DRYVIT PANZER® 20 REINFORCING MESH (20.5 OZ/SQ YD) EMBEDDED IN DRYVIT BASE COAT
9. DRYVIT STANDARD REINFORCING MESH (4.3 OZ/SQ YD) EMBEDDED IN DRYVIT BASE COAT
10. DRYVIT FINISH
11. PANZER 20 MESH IS NOT REQUIRED ON WALL AREAS THAT ARE GREATER THAN 30 FEET ABOVE GRADE. ONE LAYER OF STANDARD OR STANDARD PLUS (OUTSULATION X) REINFORCING MESH IS REQUIRED ABOVE 30 FEET UNLESS SPECIFIED OTHERWISE BY THE DESIGN PROFESSIONAL.
12. FOR FULL NOTICE OF ACCEPTANCE CLICK HERE: [NOA 24-0912.09](http://NOA 24-0912.09)

This detail is for general informational purposes only. The project design professional determines, in its sole discretion, whether this detail or a functionally equivalent detail is best suited for the project with respect to any architecture, engineering, and design requirements, including any local building code requirements. If this document is not reviewed and the product is not approved for use by a licensed design professional, the customer agrees that the detail may contain substantive flaws requiring correction, and hereby releases Tremco CPG Inc. from any and all liability related to the design and installation of the product. This detail is subject to change without notice. Contact Tremco to ensure you have the most recent version.

**Outsulation® X System**

Detail: Outsulation X System over Min. 5/8" ASTM C1177 Glass Mat Exterior Gypsum or Min. 5/8" Securock ExoAir 430

Drawn by: KAB

Checked by: CW

Scale: NTS

Revision #: 00

Revised by: -

Date: 6/4/2025

File Name:

NOA 24-0912.09



Dryvit Technical Support: 800-556-7752

[www.tremcocpg.com](http://www.tremcocpg.com)



Construction Products Group