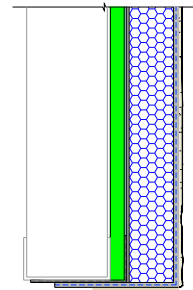


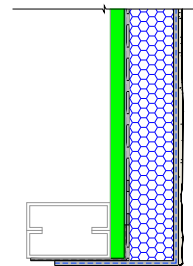
OUTSULITE PANEL (SEE NOTE 2)

DRYVIT DEMANDIT® SMOOTH OR COLOR PRIME™ ON SURFACES TO RECEIVE SEALANT (SEE NOTE 2)

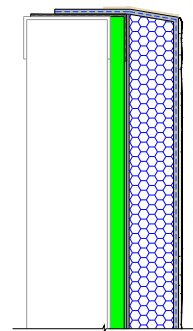
APPROVED DRYTVIT/TREMCO FLASHING MATERIAL (SEE NOTE 3 AND DETAIL OSL - 04)



SECTION A-A
HEAD



SECTION B-B
JAMB



SECTION C-C
SILL

Termination at Openings

NOTES:

1. Dryvit recommends that ground floor applications and all facades exposed to abnormal stress, high traffic, or deliberate impact have the base coat reinforced with Panzer® Mesh prior to Standard or Standard Plus Mesh. Location of high impact zones should be indicated on contract drawings.
2. Light gauge steel frame shall be designed for specific project loads and conditions to meet local building codes by licensed engineer.
3. Refer to Dryvit publication DS840 for AWRB and flashing application.
4. Coordinate with window shop drawings for termination of finish.

The architecture, engineering, and design of the project using the Dryvit products is the responsibility of the project's design professional. All systems must comply with local building codes and standards. This detail is for general information and guidance only and Dryvit specifically disclaims any liability for the use of this detail and for the architecture, design, engineering or workmanship of any project. The project design professional determines, in its sole discretion, whether this detail or a functionally equivalent detail is best suited for the project. Use of a functionally equivalent detail does not violate Dryvit's warranty. This detail is subject to change without notice. Contact Dryvit to ensure you have the most recent version.



One Energy Way, West Warwick, RI 02893
Phone : 800-556-7752