

# NewBrick®

Lightweight Insulated Brick Veneer for Use on  
Exterior Vertical Walls



**DS873**

## **NewBrick Veneer Installation Details**

# TABLE OF CONTENTS

## DETAIL

NEWBRICK MODULAR DIMENSIONS	NB 0.0.01
NEWBRICK CUTAWAYS	NB 0.0.02
NEWBRICK OVER CONCRETE	NB 0.0.03
NEWBRICK OVER PORTLAND CEMENT PLASTER (STUCCO)	NB 0.0.04
NEWBRICK OVER CEMENT BOARD MD	NB 0.0.05
NEWBRICK OVER ICF SUBSTRATE	NB 0.0.06
TERMINATION AT CONCRETE CURB	NB 0.0.07
EXPANSION JOINT AT FLOOR LINE (WOOD FRAME)	NB 0.0.08
GRADE TERMINATION	NB 0.0.09
TERMINATION AT SLOPED GRADE	NB 0.0.10
HORIZONTAL TERMINATION AT CONCRETE FOUNDATION	NB 0.0.11
STORE FRONT WINDOW SILL - JAMB	NB 0.0.12
STOREFRONT AND FLANGED WINDOW HEAD	NB 0.0.13
TERMINATION AT PARAPET - CAP FLASHING	NB 0.0.14
HORIZONTAL TERMINATION AT STONE VENEER	NB 0.0.15
OUTSIDE CORNER	NB 0.0.16
FASCIA/ UNINSULATED SOFFIT TRANSITION	NB 0.0.17
HORIZONTAL SLIP JOINT WITH WEEPS	NB 0.0.18
VERTICAL TERMINATION AT STONE VENEER	NB 0.0.19
VERTICAL EXPANSION JOINT - EIFS	NB 0.0.20
THROUGH-WALL EXPANSION JOINT	NB 0.0.21
TERMINATION AT SLOPED ROOF	NB 0.0.22
TERMINATION AT ROOF STOP FLASHING	NB 0.0.23
SIGN ATTACHMENT	NB 0.0.24
SOLDIER COURSE AT WINDOW HEAD	NB 0.0.25
ARCHWAY	NB 0.0.26
CORBELING	NB 0.0.27
ROW LOCK WINDOW SILL - JAMB	NB 0.0.28

### APPENDIX A

NEWBRICK NORMAN DIMENSIONS	NB 0.0.A1
NEWBRICK UTILITY DIMENSIONS	NB 0.0.A2
NEWBRICK ECONOMY DIMENSIONS	NB 0.0.A3

## NOTE

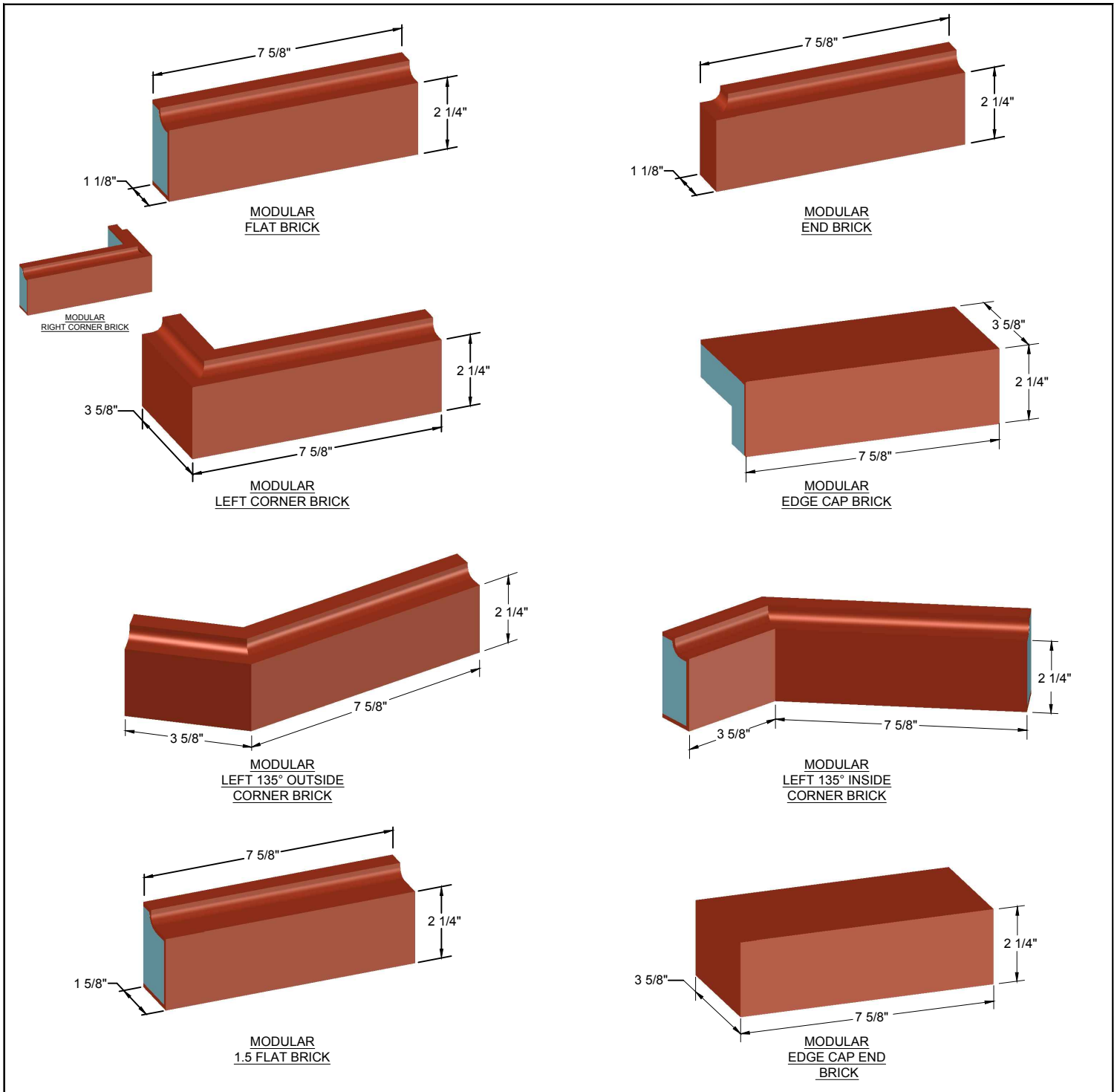
DRYVIT MAKES NO REPRESENTATION REGARDING CONFORMITY OF ITS SUGGESTIONS TO MODEL BUILDING CODES, ENGINEERING CRITERIA, SPECIFIC APPLICATIONS, OR PROJECT LOCATIONS. ALL COMPONENTS INDICATED IN ILLUSTRATIONS, AS WELL AS OTHERS THAT MAY BE REQUIRED FOR THE INTEGRITY OF THE SYSTEM SHALL BE DESIGNED, DETAILED, AND ENGINEERED BY REPRESENTATIVES OF THE ARCHITECT, OWNER, OR CONTRACTOR TO BE IN CONFORMANCE WITH MODEL CODES, ARCHITECTURAL, AND ENGINEERING REQUIREMENTS PERTAINING TO SPECIFIC BUILDING PROJECTS.

DRYVIT MAKES NO WARRANTY, EXPRESSED OR IMPLIED, AS TO THE ARCHITECTURAL DESIGN, ENGINEERING, OR WORKMANSHIP OF PROJECTS UTILIZING DRYVIT SYSTEMS OR PRODUCTS.

# NewBrick®

The architecture, engineering, and design of the project using the Dryvit products is the responsibility of the project's design professional. All systems must comply with local building codes and standards. This detail is for general information and guidance only and Dryvit specifically disclaims any liability for the use of this detail and for the architecture, design, engineering or workmanship of any project. The project design professional determines, in its sole discretion, whether this detail or a functionally equivalent detail is best suited for the project. Use of a functionally equivalent detail does not violate Dryvit's warranty. This detail is subject to change without notice. Contact Dryvit to ensure you have the most recent version.





## NewBrick®

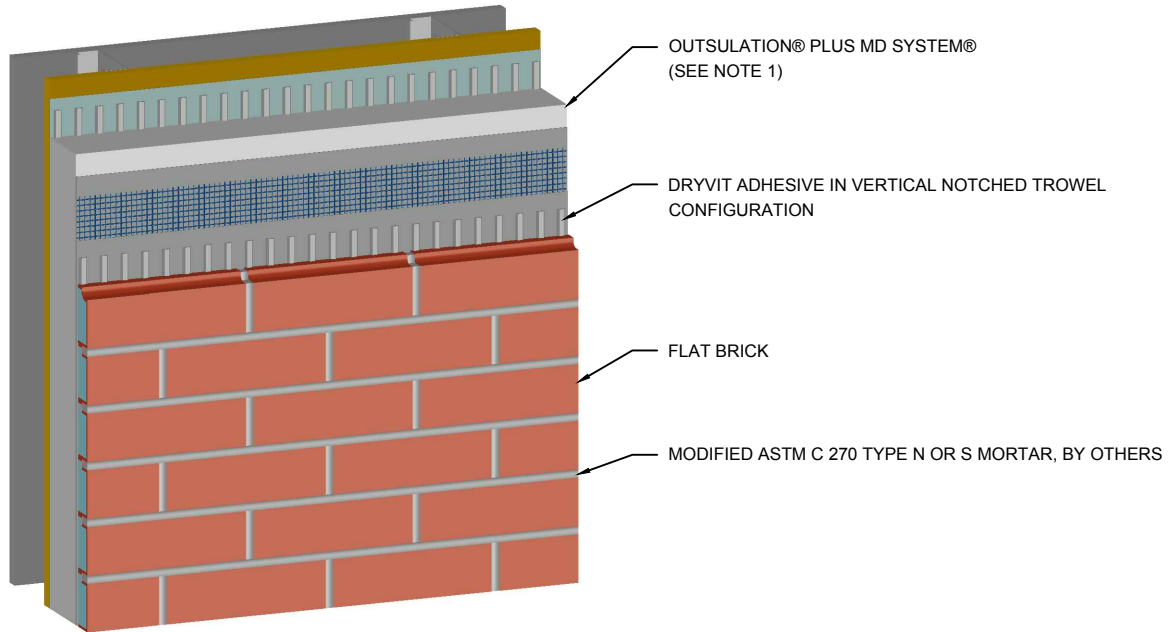
## NewBrick Modular Dimensions

### NOTE:

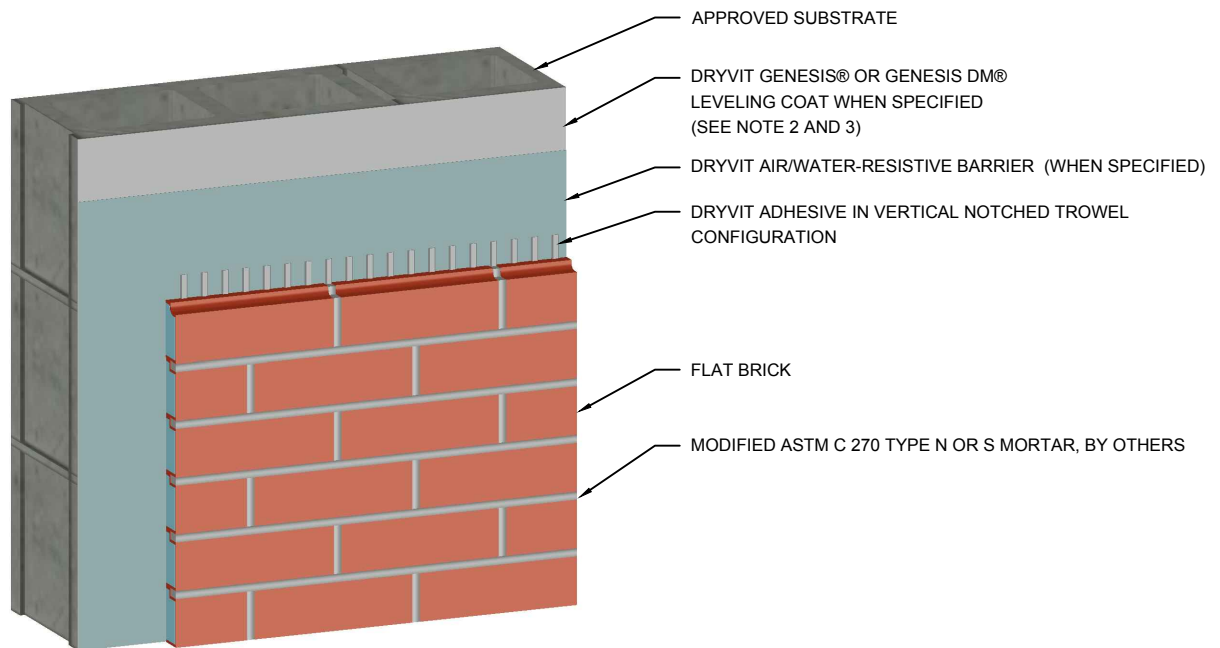
1. NEWBRICK HAS A MINIMUM THICKNESS OF 1 1/8 in (29mm). UNLESS OTHERWISE NOTED.
2. NEWBRICK HAS A 3/8 IN (9.5mm) HORIZONTAL ALIGNMENT GUIDE.
3. For additional NEWBRICK sizes see Appendix A.

The architecture, engineering, and design of the project using the Dryvit products is the responsibility of the project's design professional. All systems must comply with local building codes and standards. This detail is for general information and guidance only and Dryvit specifically disclaims any liability for the use of this detail and for the architecture, design, engineering or workmanship of any project. The project design professional determines, in its sole discretion, whether this detail or a functionally equivalent detail is best suited for the project. Use of a functionally equivalent detail does not violate Dryvit's warranty. This detail is subject to change without notice. Contact Dryvit to ensure you have the most recent version.

## NEWBRICK™ APPLICATION OVER CI



## NEWBRICK™ APPLICATION OVER CMU



## NewBrick®

## NewBrick Cutaways

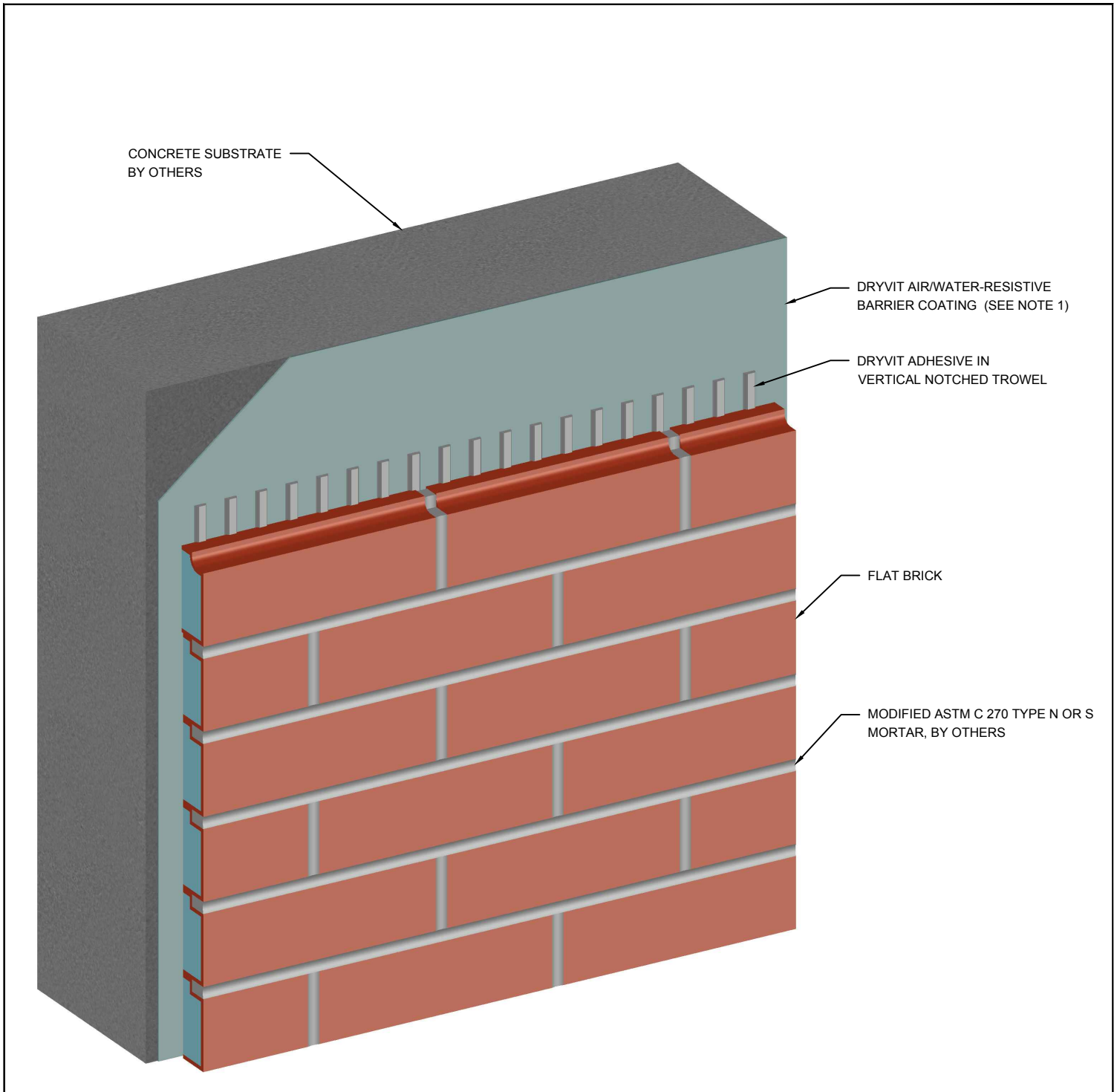
### NOTES:

1. OUTSULATION PLUS MD SYSTEM SHOWN FOR ILLUSTRATIVE PURPOSES ONLY. REFER TO APPROPRIATE DRYVIT SYSTEM LITERATURE FOR SYSTEM INSTALLATION.

2. THE SUBSTRATE SHALL BE FREE OF PROJECTIONS AND SHALL HAVE NO PLANAR IRREGULARITIES GREATER THAN 1/4" (6.4 MM) WITHIN ANY 4'-0" (1.2 M) RADIUS.

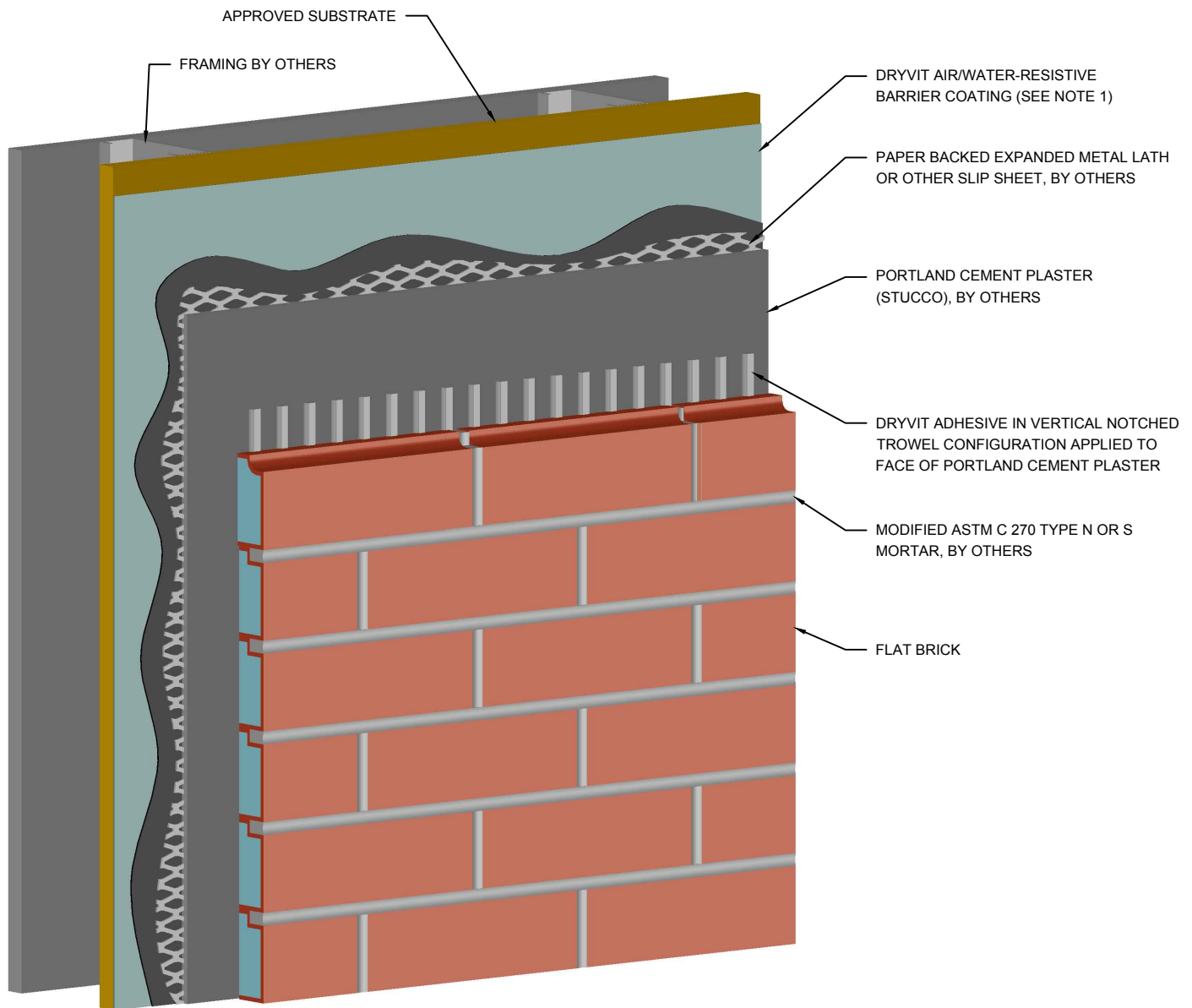
3. WHEN SPECIFIED A DRYVIT AIR/WATER-RESISTIVE BARRIER CAN BE APPLIED OVER THE GENESIS OR GENESIS DM LEVELING COAT

The architecture, engineering, and design of the project using the Dryvit products is the responsibility of the project's design professional. All systems must comply with local building codes and standards. This detail is for general information and guidance only and Dryvit specifically disclaims any liability for the use of this detail and for the architecture, design, engineering or workmanship of any project. The project design professional determines, in its sole discretion, whether this detail or a functionally equivalent detail is best suited for the project. Use of a functionally equivalent detail does not violate Dryvit's warranty. This detail is subject to change without notice. Contact Dryvit to ensure you have the most recent version.

**NewBrick®****NewBrick Over Concrete****NOTES:**

1. WHEN SPECIFIED A DRYVIT AIR/WATER-RESISTIVE BARRIER CAN BE APPLIED OVER THE CONCRETE SUBSTRATE. REFER TO DRYVIT PUBLICATION DS840.

The architecture, engineering, and design of the project using the Dryvit products is the responsibility of the project's design professional. All systems must comply with local building codes and standards. This detail is for general information and guidance only and Dryvit specifically disclaims any liability for the use of this detail and for the architecture, design, engineering or workmanship of any project. The project design professional determines, in its sole discretion, whether this detail or a functionally equivalent detail is best suited for the project. Use of a functionally equivalent detail does not violate Dryvit's warranty. This detail is subject to change without notice. Contact Dryvit to ensure you have the most recent version.



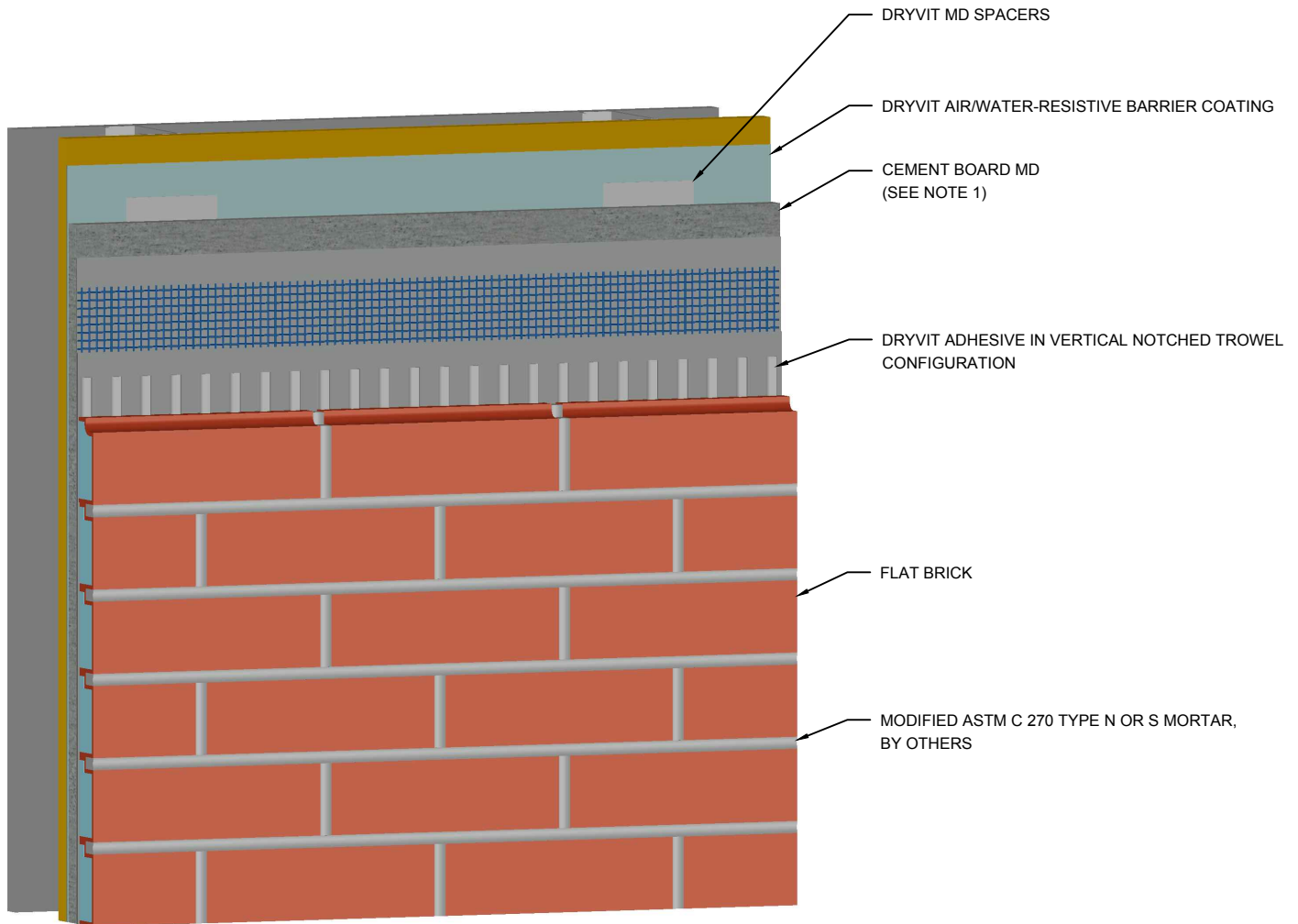
## NewBrick®

## NewBrick over Portland Cement Plaster (Stucco)

**NOTE:**

1. REFER TO DRYVIT PUBLICATION DS840.

The architecture, engineering, and design of the project using the Dryvit products is the responsibility of the project's design professional. All systems must comply with local building codes and standards. This detail is for general information and guidance only and Dryvit specifically disclaims any liability for the use of this detail and for the architecture, design, engineering or workmanship of any project. The project design professional determines, in its sole discretion, whether this detail or a functionally equivalent detail is best suited for the project. Use of a functionally equivalent detail does not violate Dryvit's warranty. This detail is subject to change without notice. Contact Dryvit to ensure you have the most recent version.



## NewBrick®

## NewBrick Over Dryvit Cement Board MD System

### NOTES:

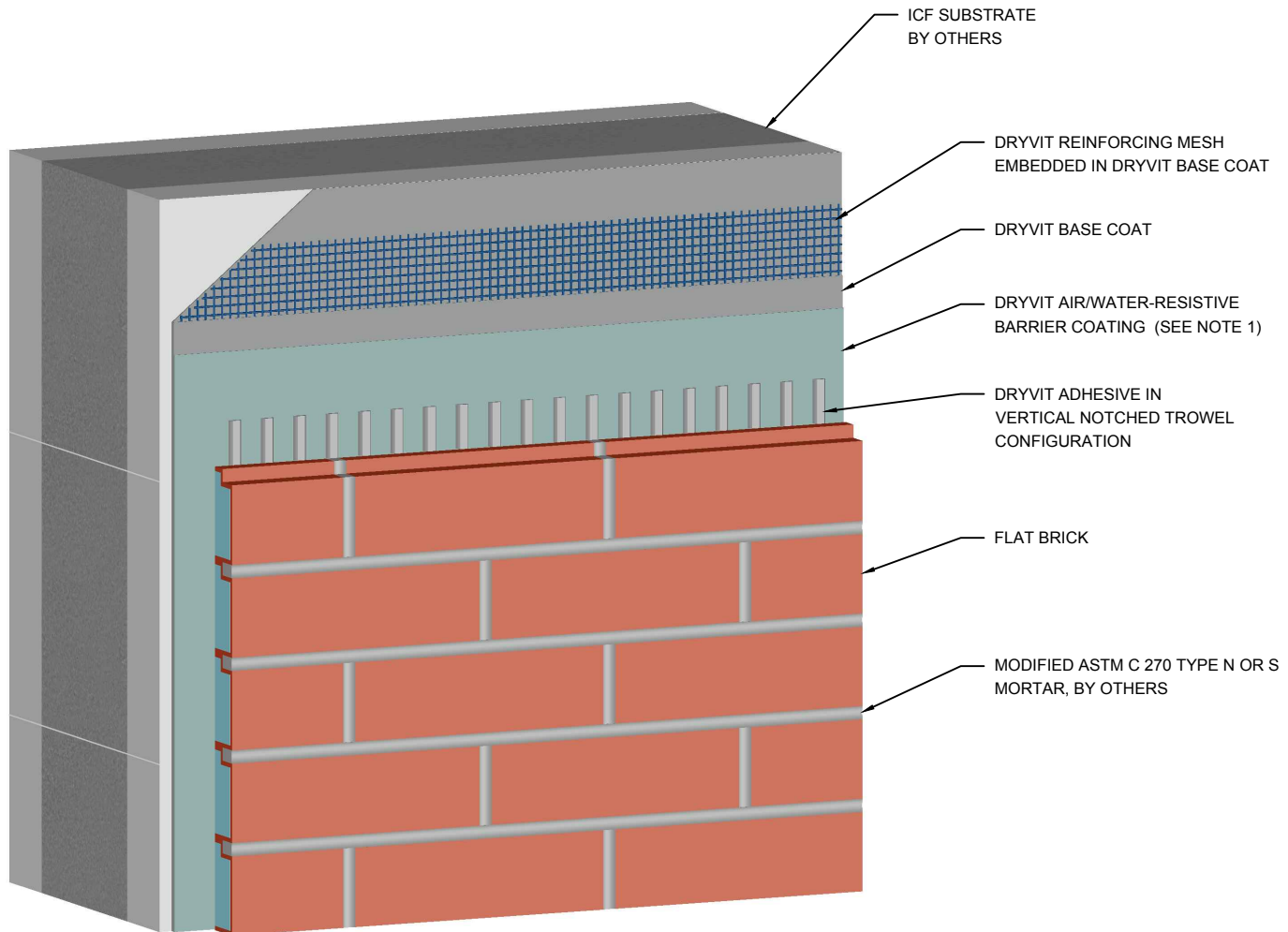
1. CEMENT BOARD MD SYSTEM SHOWN FOR ILLUSTRATIVE PURPOSES ONLY. REFER TO APPROPRIATE DRYVIT SYSTEM LITERATURE FOR SYSTEM INSTALLATION.

2. THE SUBSTRATE SHALL BE FREE OF PROJECTIONS AND SHALL HAVE NO PLANAR IRREGULARITIES GREATER THAN 1/4" (6.4 MM) WITHIN ANY 4'-0" (1.2 M) RADIUS.

3. WHEN SPECIFIED A DRYVIT AIR/WATER-RESISTIVE BARRIER CAN BE APPLIED OVER THE GENESIS OR GENESIS DM LEVELING COAT

The architecture, engineering, and design of the project using the Dryvit products is the responsibility of the project's design professional. All systems must comply with local building codes and standards. This detail is for general information and guidance only and Dryvit specifically disclaims any liability for the use of this detail and for the architecture, design, engineering or workmanship of any project. The project design professional determines, in its sole discretion, whether this detail or a functionally equivalent detail is best suited for the project. Use of a functionally equivalent detail does not violate Dryvit's warranty. This detail is subject to change without notice. Contact Dryvit to ensure you have the most recent version.



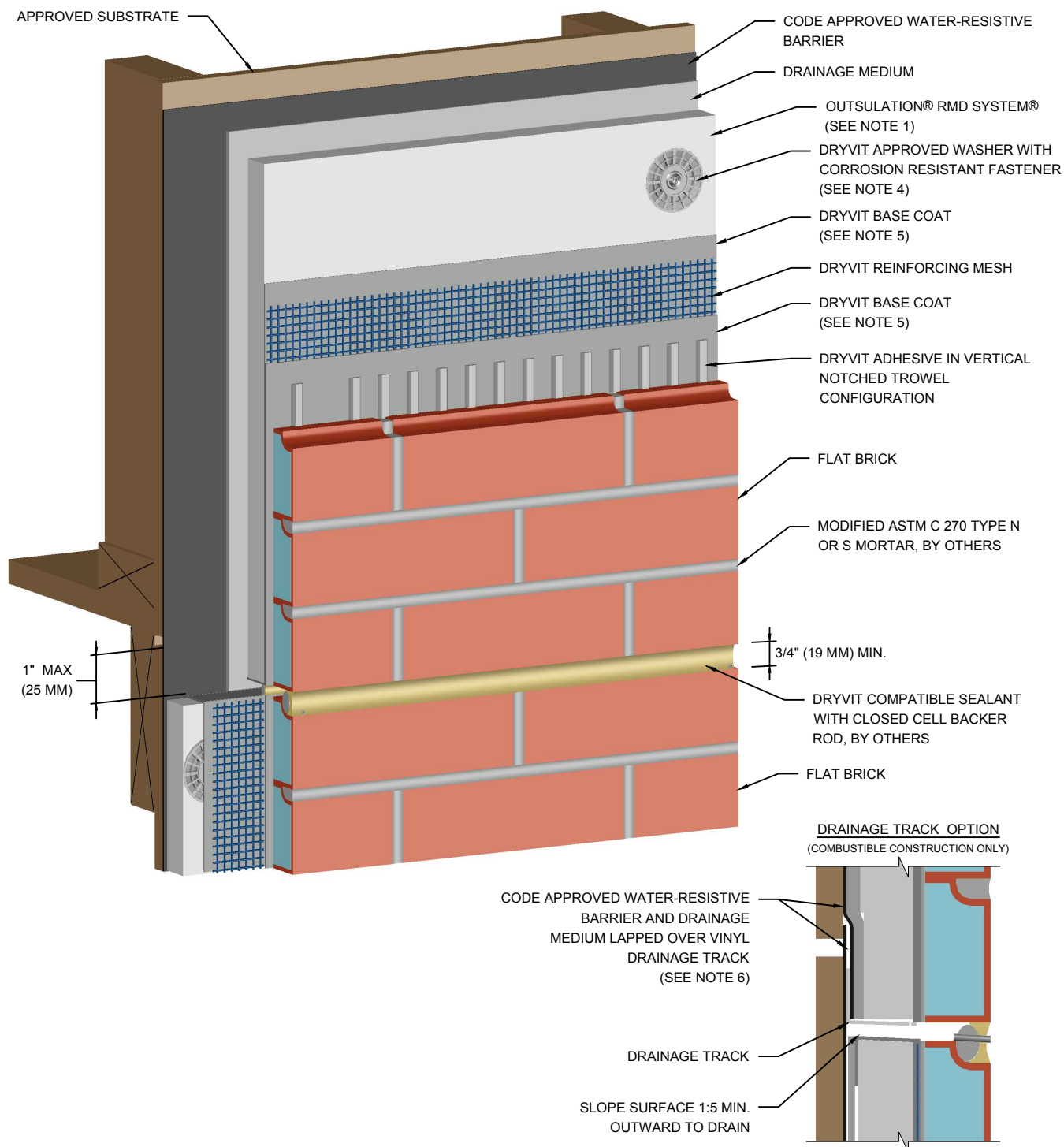


## NewBrick®

## NewBrick over ICF Substrate

**NOTES:**  
1. WHEN SPECIFIED A DRYVIT AIR/WATER-RESISTIVE BARRIER CAN BE APPLIED OVER THE DRYVIT BASE COAT. REFER TO DS840.

The architecture, engineering, and design of the project using the Dryvit products is the responsibility of the project's design professional. All systems must comply with local building codes and standards. This detail is for general information and guidance only and Dryvit specifically disclaims any liability for the use of this detail and for the architecture, design, engineering or workmanship of any project. The project design professional determines, in its sole discretion, whether this detail or a functionally equivalent detail is best suited for the project. Use of a functionally equivalent detail does not violate Dryvit's warranty. This detail is subject to change without notice. Contact Dryvit to ensure you have the most recent version.



## NewBrick®

### Expansion Joint At Floor Line

#### NOTE:

1. OUTSULATION RMD SYSTEM SHOWN FOR ILLUSTRATIVE PURPOSES ONLY. REFER TO APPROPRIATE DRYVIT SYSTEM LITERATURE FOR SYSTEM INSTALLATION.

2. EXPANSION JOINT IS NECESSARY WHERE SIGNIFICANT DIFFERENTIAL MOVEMENT IS EXPECTED AT FLOOR LINES

3. LOCATE EXTERNAL SEALANT JOINT WITHIN 1" (25 MM) OF BREAK IN SUBSTRATE.

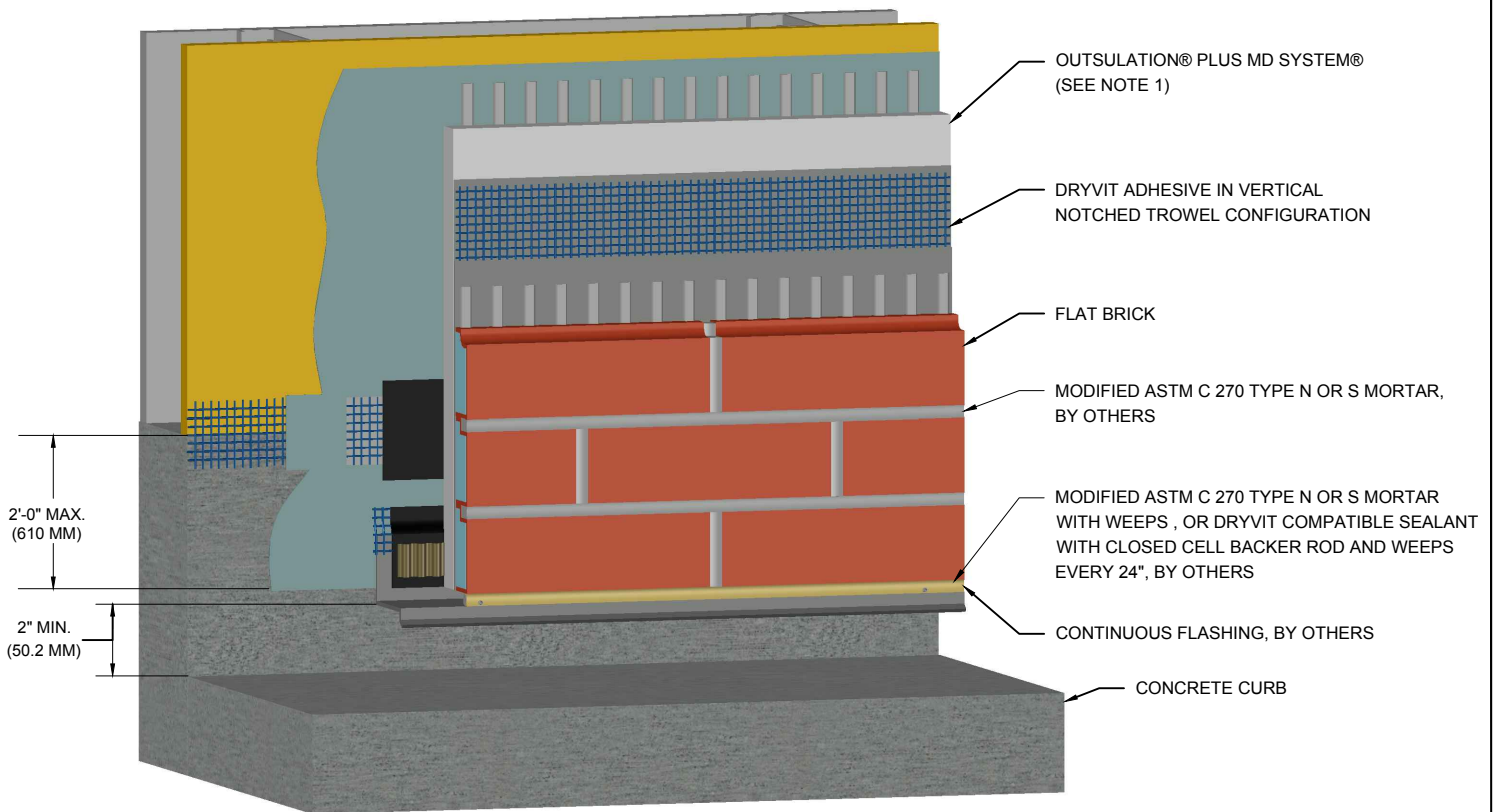
4. FASTENERS ARE NOT REQUIRED WHEN BACKSTOP® NT IS USED AS THE WATER-RESISTIVE BARRIER.

5. DRYVIT GENESIS® OR GENESIS DM SHALL BE USED AS THE BASE COAT WHEN INSTALLING SYSTEMS WITH MECHANICAL FASTENERS.

6. IF OPTIONAL DRAINAGE TRACK IS USED, BACK OF EPS WILL NEED TO BE NOTCHED TO ACCOMMODATE THE DRAINAGE MEDIUM AND WATER-RESISTIVE BARRIER.

The architecture, engineering, and design of the project using the Dryvit products is the responsibility of the project's design professional. All systems must comply with local building codes and standards. This detail is for general information and guidance only and Dryvit specifically disclaims any liability for the use of this detail and for the architecture, design, engineering or workmanship of any project. The project design professional determines, in its sole discretion, whether this detail or a functionally equivalent detail is best suited for the project. Use of a functionally equivalent detail does not violate Dryvit's warranty. This detail is subject to change without notice. Contact Dryvit to ensure you have the most recent version.



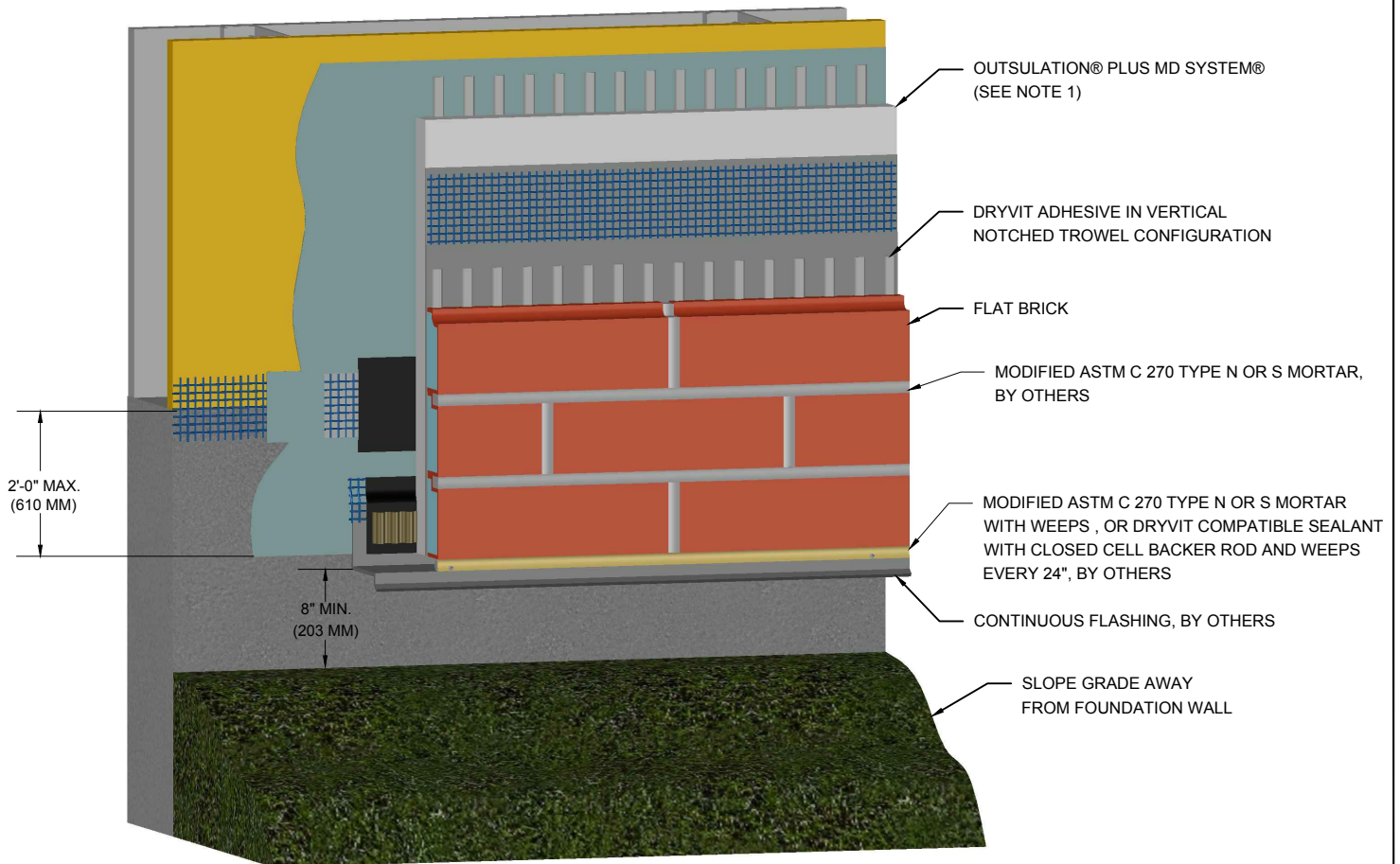


## NewBrick®

## Termination At Concrete Curb

**NOTE:**  
1. OUTSULATION PLUS MD SYSTEM SHOWN FOR  
ILLUSTRATIVE PURPOSES ONLY. REFER TO  
APPROPRIATE DRYVIT SYSTEM LITERATURE FOR  
SYSTEM INSTALLATION.

The architecture, engineering, and design of the project using the Dryvit products is the responsibility of the project's design professional. All systems must comply with local building codes and standards. This detail is for general information and guidance only and Dryvit specifically disclaims any liability for the use of this detail and for the architecture, design, engineering or workmanship of any project. The project design professional determines, in its sole discretion, whether this detail or a functionally equivalent detail is best suited for the project. Use of a functionally equivalent detail does not violate Dryvit's warranty. This detail is subject to change without notice. Contact Dryvit to ensure you have the most recent version.

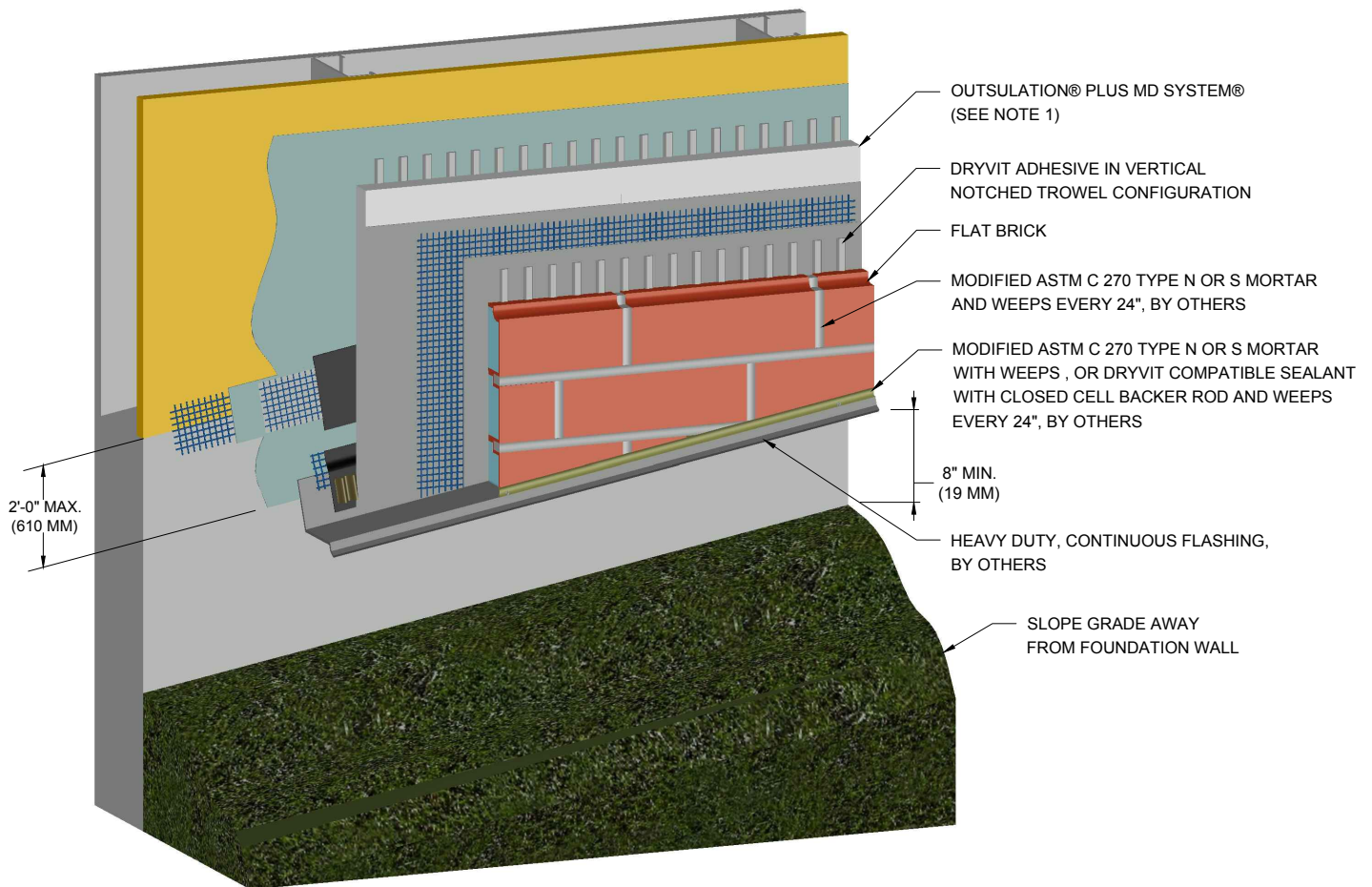


## NewBrick®

## Grade Termination

**NOTE:**  
1. OUTSULATION PLUS MD SYSTEM SHOWN FOR  
ILLUSTRATIVE PURPOSES ONLY. REFER TO  
APPROPRIATE DRYVIT SYSTEM LITERATURE FOR  
SYSTEM INSTALLATION.

The architecture, engineering, and design of the project using the Dryvit products is the responsibility of the project's design professional. All systems must comply with local building codes and standards. This detail is for general information and guidance only and Dryvit specifically disclaims any liability for the use of this detail and for the architecture, design, engineering or workmanship of any project. The project design professional determines, in its sole discretion, whether this detail or a functionally equivalent detail is best suited for the project. Use of a functionally equivalent detail does not violate Dryvit's warranty. This detail is subject to change without notice. Contact Dryvit to ensure you have the most recent version.

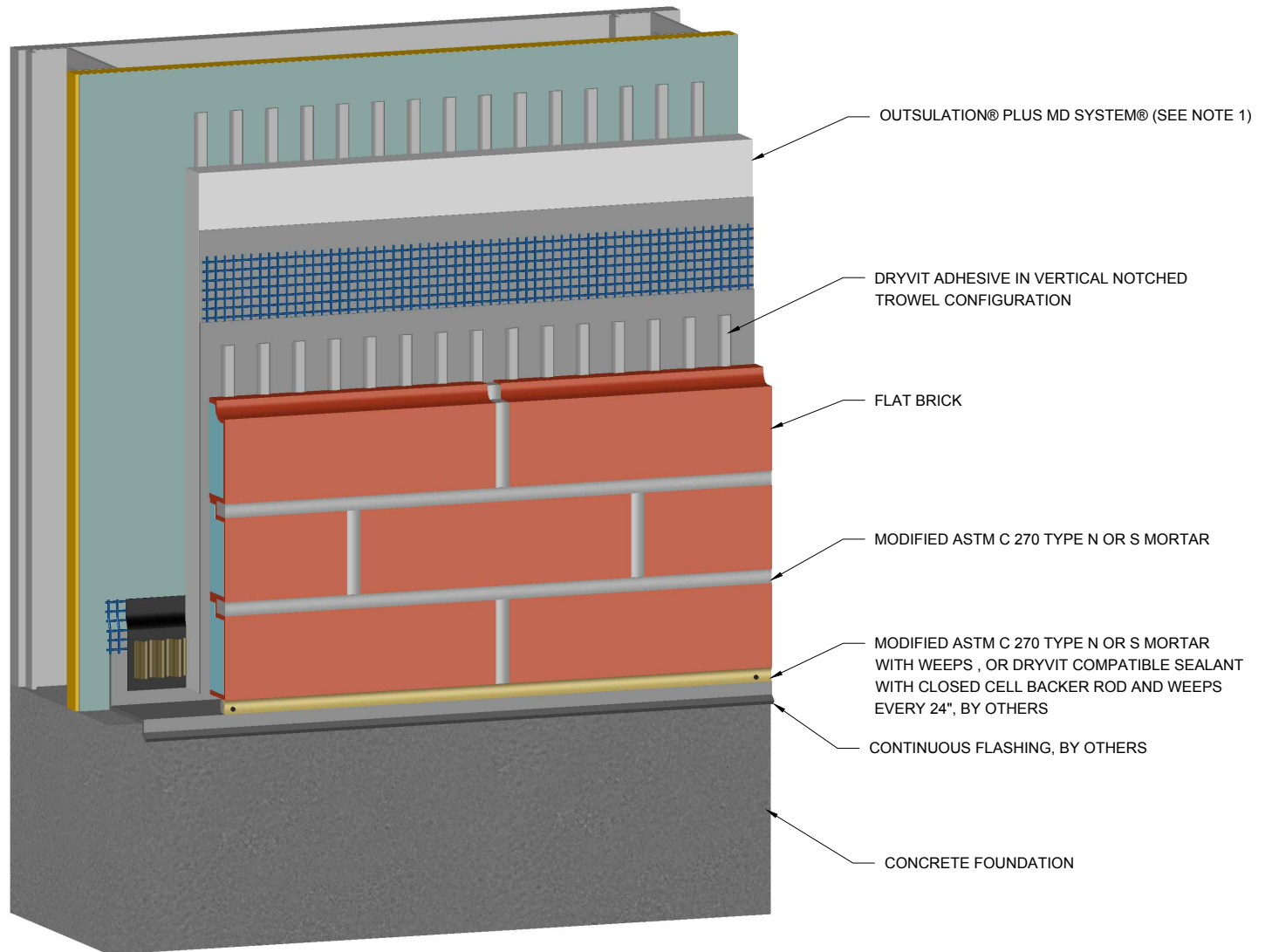


## NewBrick®

## Termination at Sloped Grade

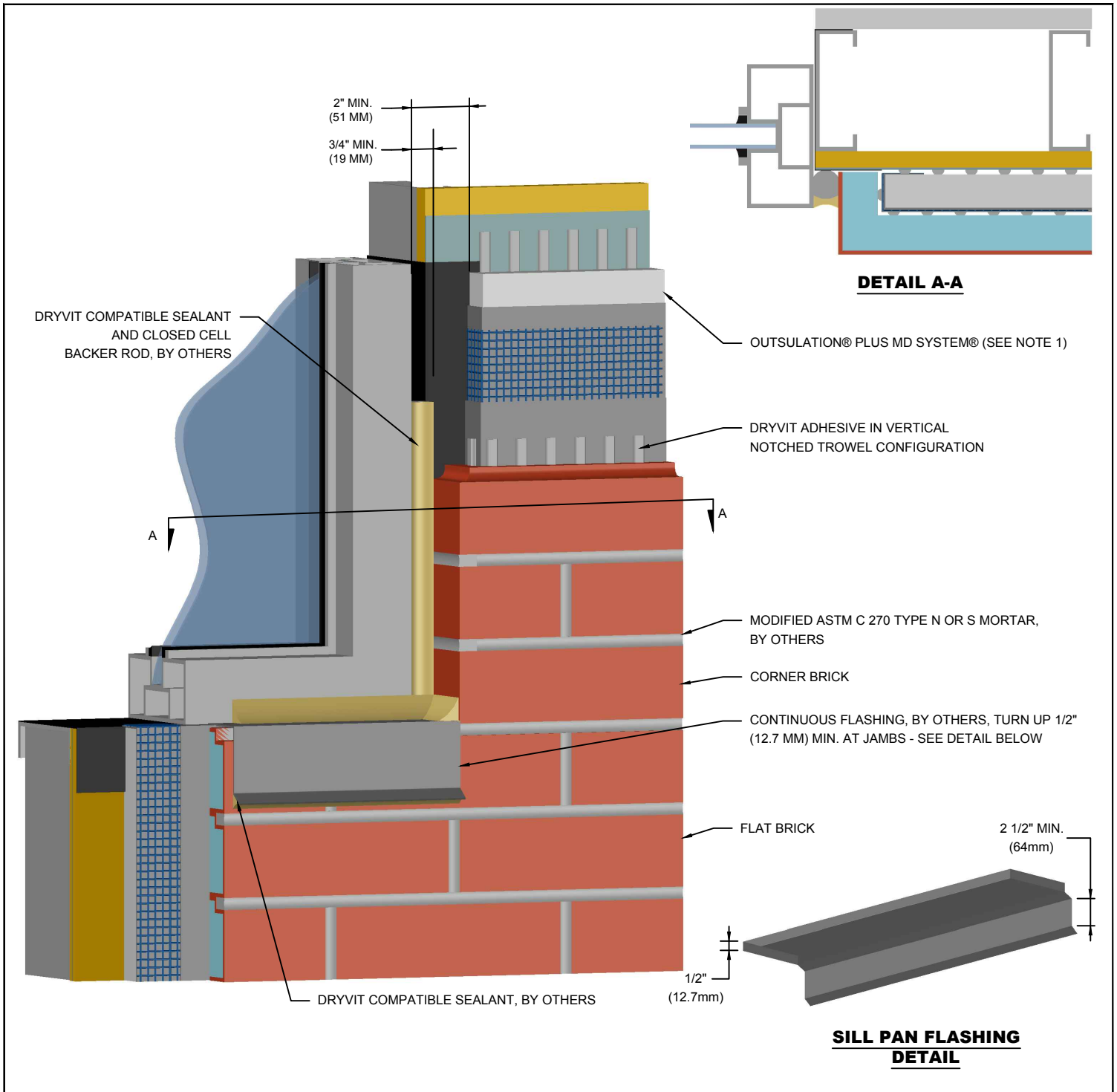
**NOTE:**  
1. OUTSULATION PLUS MD SYSTEM SHOWN  
FOR ILLUSTRATIVE PURPOSES ONLY. REFER  
TO APPROPRIATE DRYVIT SYSTEM  
LITERATURE FOR SYSTEM INSTALLATION.

The architecture, engineering, and design of the project using the Dryvit products is the responsibility of the project's design professional. All systems must comply with local building codes and standards. This detail is for general information and guidance only and Dryvit specifically disclaims any liability for the use of this detail and for the architecture, design, engineering or workmanship of any project. The project design professional determines, in its sole discretion, whether this detail or a functionally equivalent detail is best suited for the project. Use of a functionally equivalent detail does not violate Dryvit's warranty. This detail is subject to change without notice. Contact Dryvit to ensure you have the most recent version.

**NewBrick®****Horizontal Termination at Concrete Foundation****NOTES:**

1. OUTSULATION PLUS MD SYSTEM SHOWN FOR ILLUSTRATIVE PURPOSES ONLY. REFER TO APPROPRIATE DRYVIT SYSTEM LITERATURE FOR SYSTEM INSTALLATION.

The architecture, engineering, and design of the project using the Dryvit products is the responsibility of the project's design professional. All systems must comply with local building codes and standards. This detail is for general information and guidance only and Dryvit specifically disclaims any liability for the use of this detail and for the architecture, design, engineering or workmanship of any project. The project design professional determines, in its sole discretion, whether this detail or a functionally equivalent detail is best suited for the project. Use of a functionally equivalent detail does not violate Dryvit's warranty. This detail is subject to change without notice. Contact Dryvit to ensure you have the most recent version.

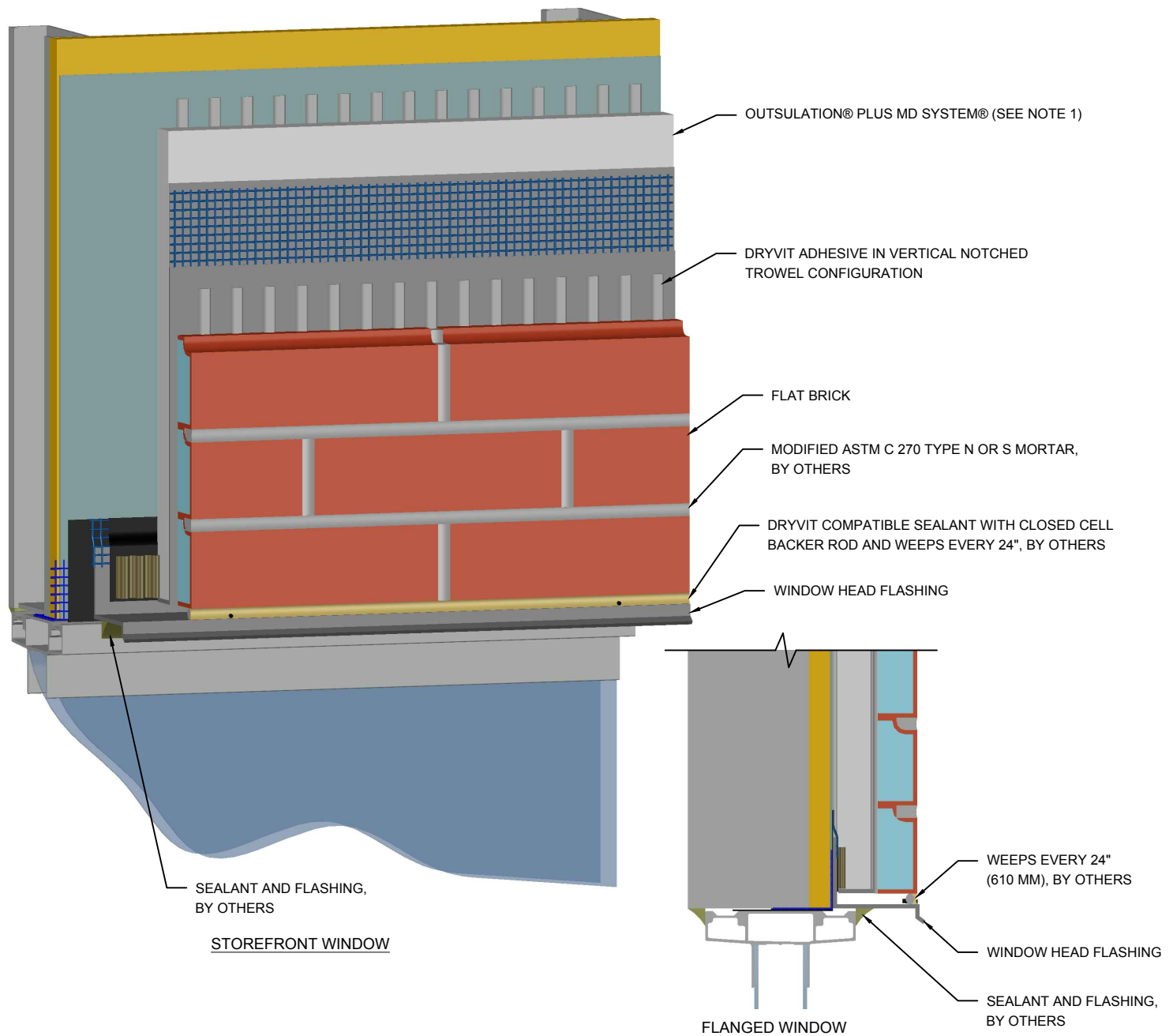


## NewBrick®

## Storefront Window Sill - Jamb

**NOTE:**  
1. OUTSULATION PLUS MD SYSTEM SHOWN FOR ILLUSTRATIVE PURPOSES ONLY. REFER TO APPROPRIATE DRYVIT SYSTEM LITERATURE FOR SYSTEM INSTALLATION.

The architecture, engineering, and design of the project using the Dryvit products is the responsibility of the project's design professional. All systems must comply with local building codes and standards. This detail is for general information and guidance only and Dryvit specifically disclaims any liability for the use of this detail and for the architecture, design, engineering or workmanship of any project. The project design professional determines, in its sole discretion, whether this detail or a functionally equivalent detail is best suited for the project. Use of a functionally equivalent detail does not violate Dryvit's warranty. This detail is subject to change without notice. Contact Dryvit to ensure you have the most recent version.

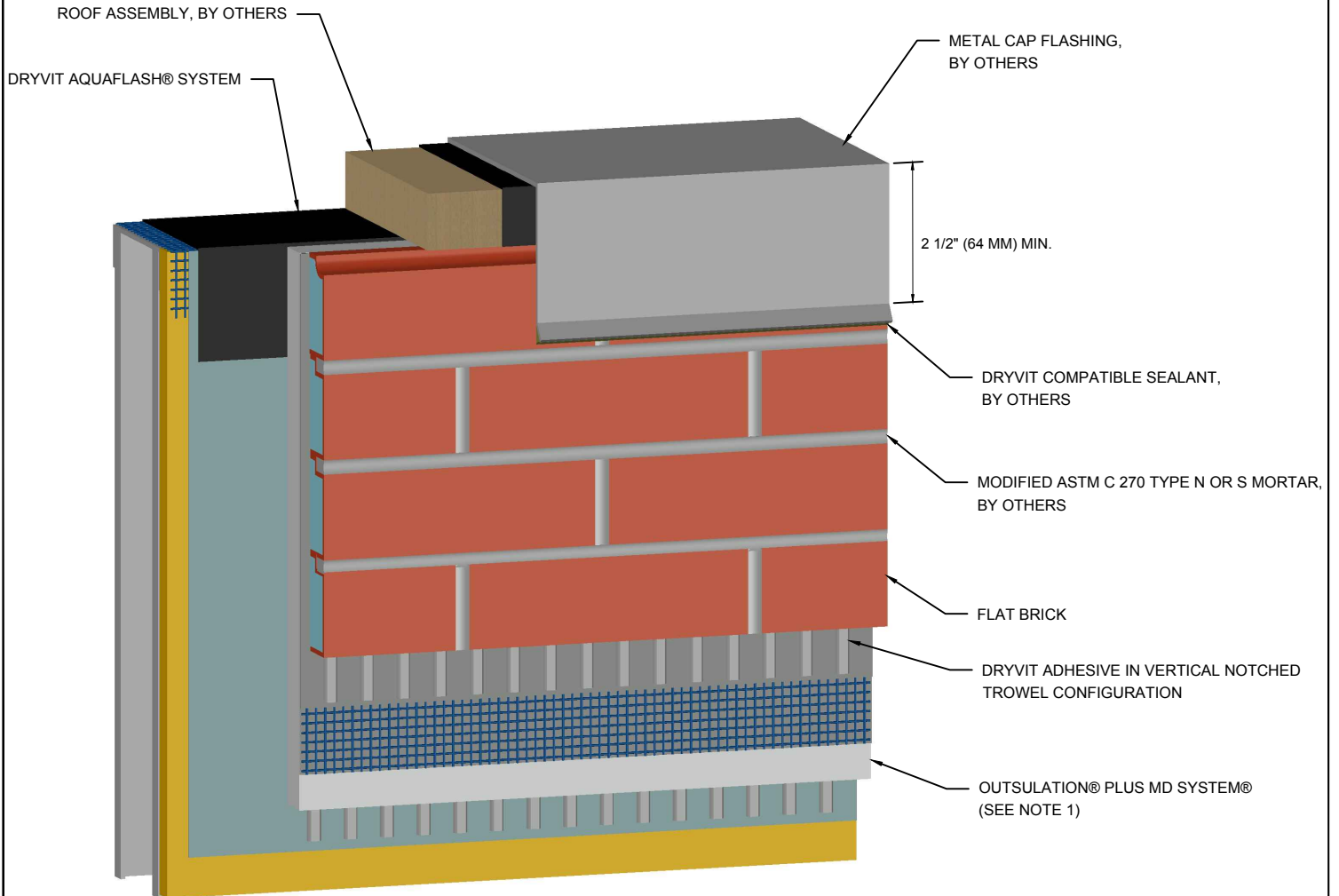


## NewBrick®

## Storefront and Flanged Window Head

**NOTE:**  
1. OUTSULATION PLUS MD SYSTEM SHOWN FOR ILLUSTRATIVE PURPOSES ONLY. REFER TO APPROPRIATE DRYVIT SYSTEM LITERATURE FOR SYSTEM INSTALLATION.

The architecture, engineering, and design of the project using the Dryvit products is the responsibility of the project's design professional. All systems must comply with local building codes and standards. This detail is for general information and guidance only and Dryvit specifically disclaims any liability for the use of this detail and for the architecture, design, engineering or workmanship of any project. The project design professional determines, in its sole discretion, whether this detail or a functionally equivalent detail is best suited for the project. Use of a functionally equivalent detail does not violate Dryvit's warranty. This detail is subject to change without notice. Contact Dryvit to ensure you have the most recent version.

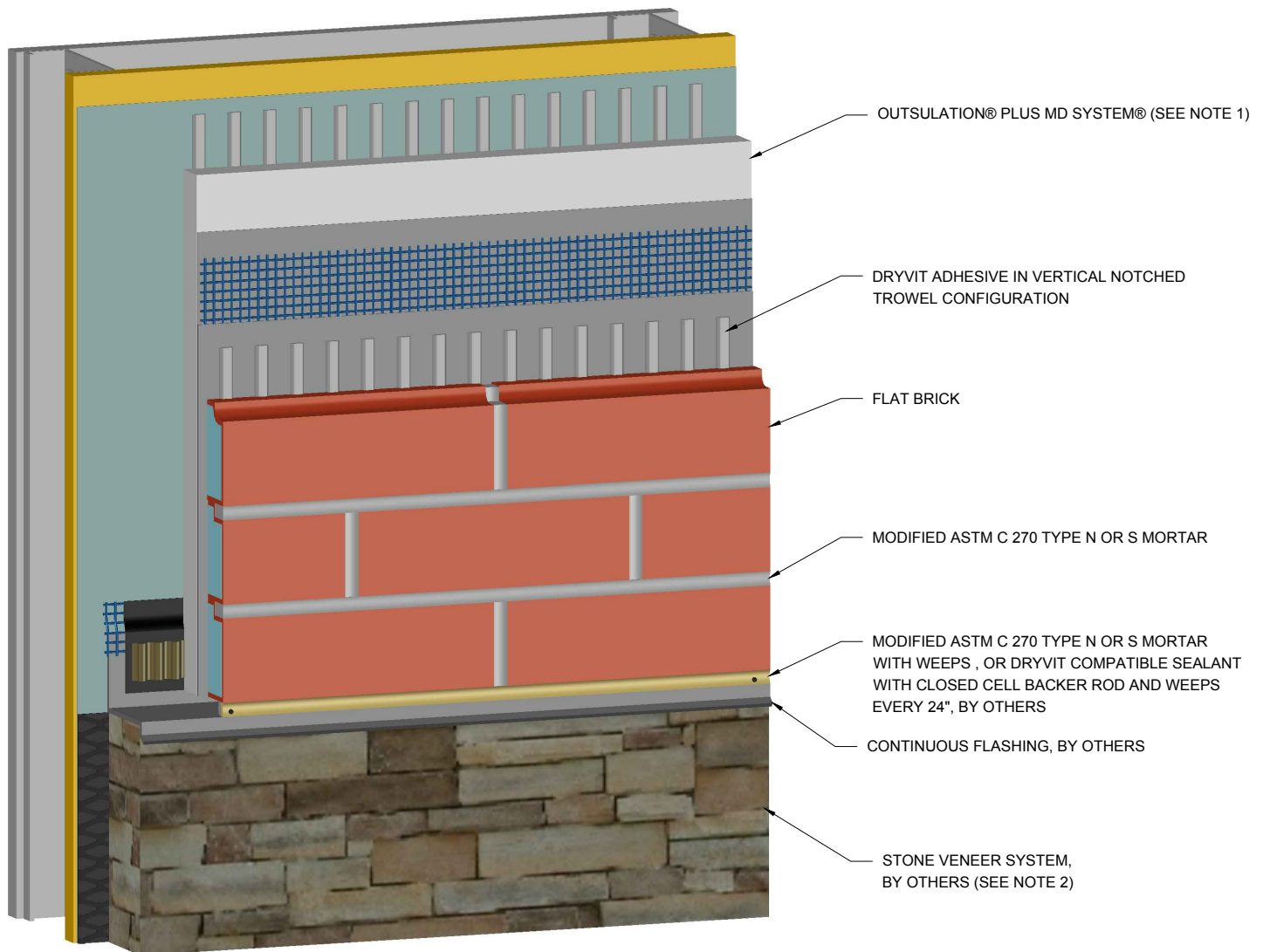


## NewBrick®

## Termination At Parapet - Cap Flashing

**NOTE:**  
1. OUTSULATION PLUS MD SYSTEM SHOWN FOR ILLUSTRATIVE PURPOSES ONLY. REFER TO APPROPRIATE DRYVIT SYSTEM LITERATURE FOR SYSTEM INSTALLATION.

The architecture, engineering, and design of the project using the Dryvit products is the responsibility of the project's design professional. All systems must comply with local building codes and standards. This detail is for general information and guidance only and Dryvit specifically disclaims any liability for the use of this detail and for the architecture, design, engineering or workmanship of any project. The project design professional determines, in its sole discretion, whether this detail or a functionally equivalent detail is best suited for the project. Use of a functionally equivalent detail does not violate Dryvit's warranty. This detail is subject to change without notice. Contact Dryvit to ensure you have the most recent version.



## NewBrick®

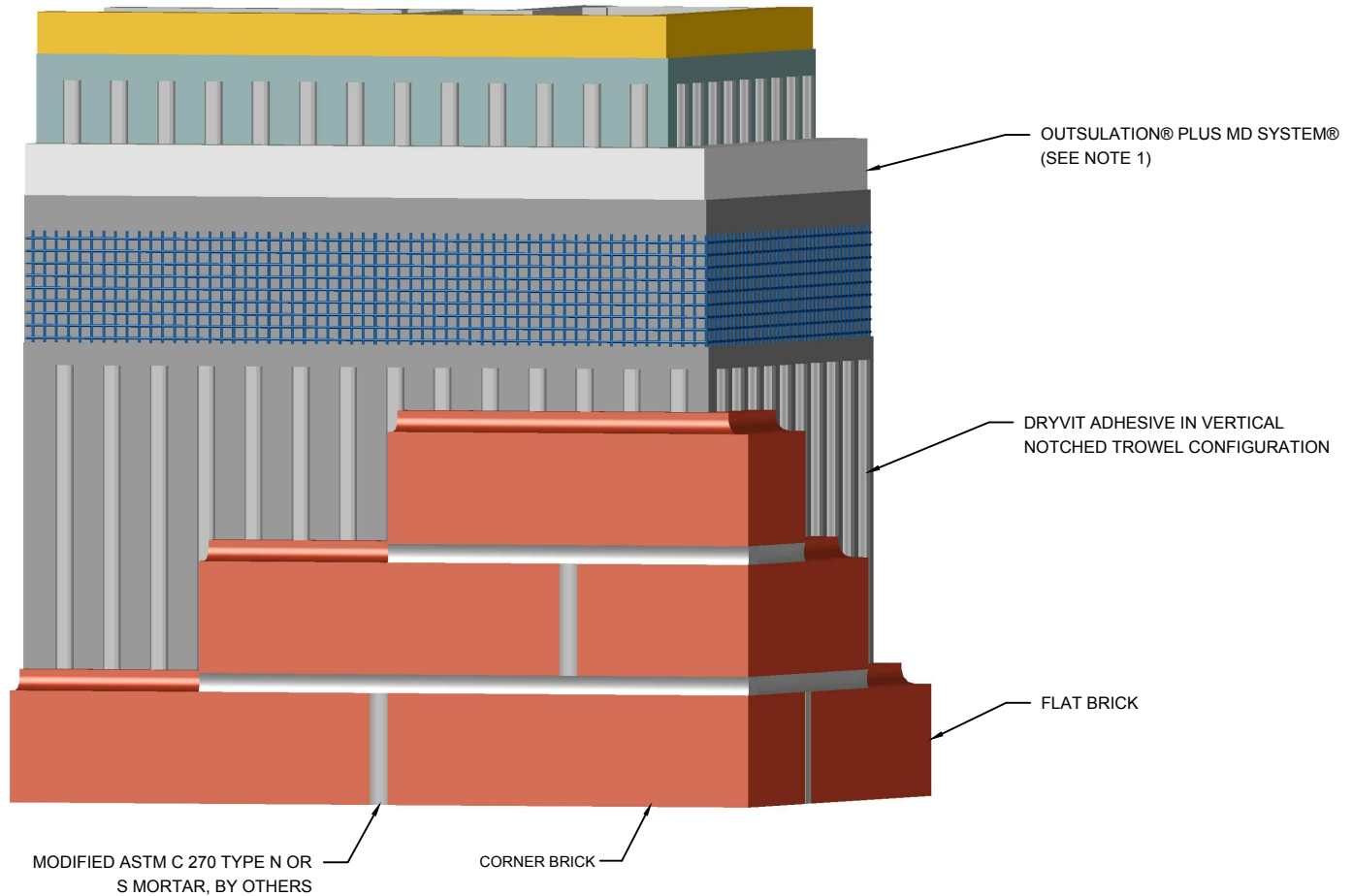
### Horizontal Termination at Stone Veneer

#### NOTES:

1. OUTSULATION PLUS MD SYSTEM SHOWN FOR ILLUSTRATIVE PURPOSES ONLY. REFER TO APPROPRIATE DRYVIT SYSTEM LITERATURE FOR SYSTEM INSTALLATION.

2. FOR INSTALLATION OF DRYVIT AIR/WATER-RESISTIVE BARRIER COATING BENEATH CLADDINGS OTHER THAN DRYVIT EIFS, REFER TO DRYVIT PUBLICATIONS DS300 AND DS840.

The architecture, engineering, and design of the project using the Dryvit products is the responsibility of the project's design professional. All systems must comply with local building codes and standards. This detail is for general information and guidance only and Dryvit specifically disclaims any liability for the use of this detail and for the architecture, design, engineering or workmanship of any project. The project design professional determines, in its sole discretion, whether this detail or a functionally equivalent detail is best suited for the project. Use of a functionally equivalent detail does not violate Dryvit's warranty. This detail is subject to change without notice. Contact Dryvit to ensure you have the most recent version.

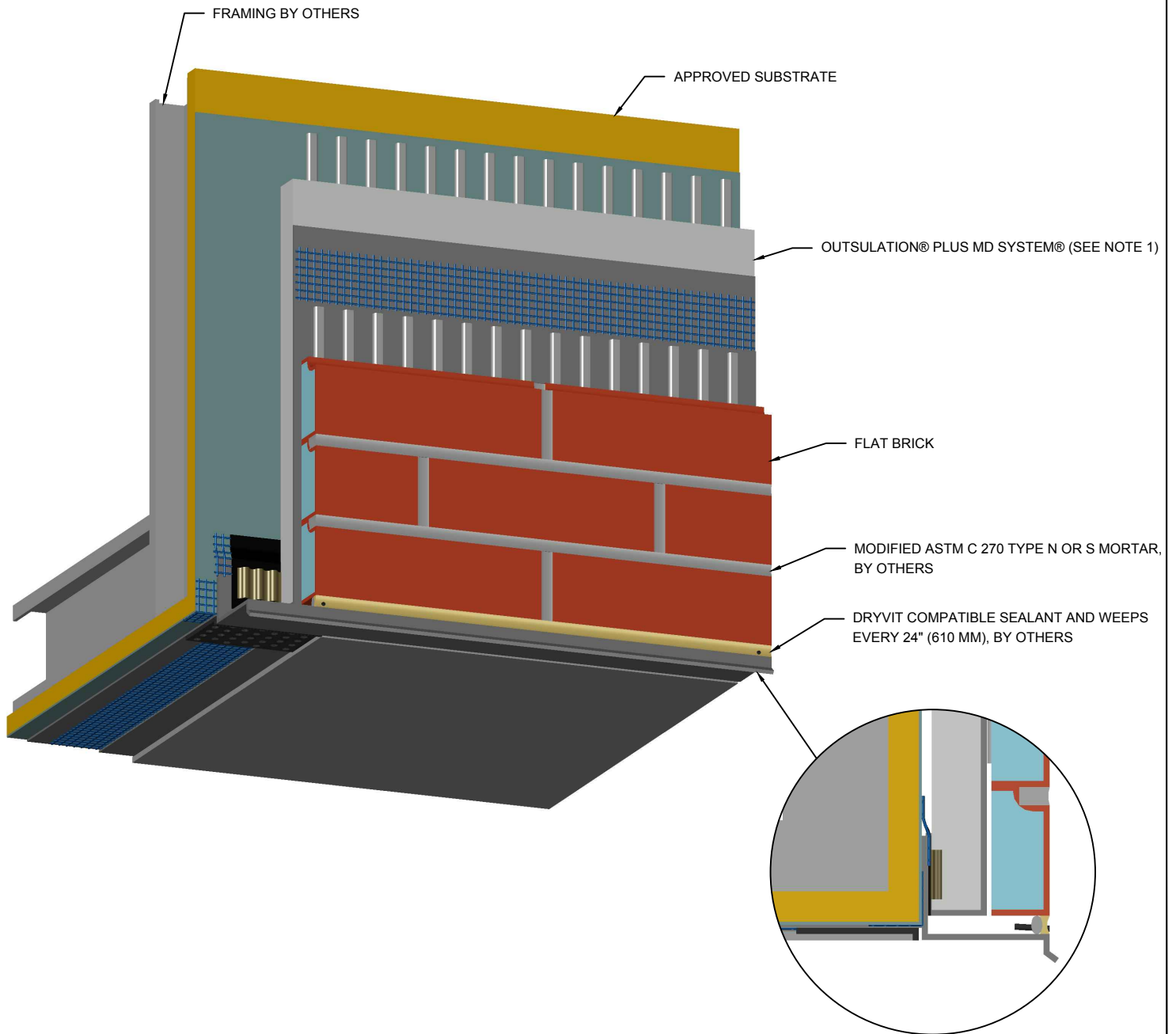


## NewBrick®

## Outside Corner

**NOTE:**  
1. OUTSULATION PLUS MD SYSTEM SHOWN FOR ILLUSTRATIVE PURPOSES ONLY. REFER TO APPROPRIATE DRYVIT SYSTEM LITERATURE FOR SYSTEM INSTALLATION.

The architecture, engineering, and design of the project using the Dryvit products is the responsibility of the project's design professional. All systems must comply with local building codes and standards. This detail is for general information and guidance only and Dryvit specifically disclaims any liability for the use of this detail and for the architecture, design, engineering or workmanship of any project. The project design professional determines, in its sole discretion, whether this detail or a functionally equivalent detail is best suited for the project. Use of a functionally equivalent detail does not violate Dryvit's warranty. This detail is subject to change without notice. Contact Dryvit to ensure you have the most recent version.



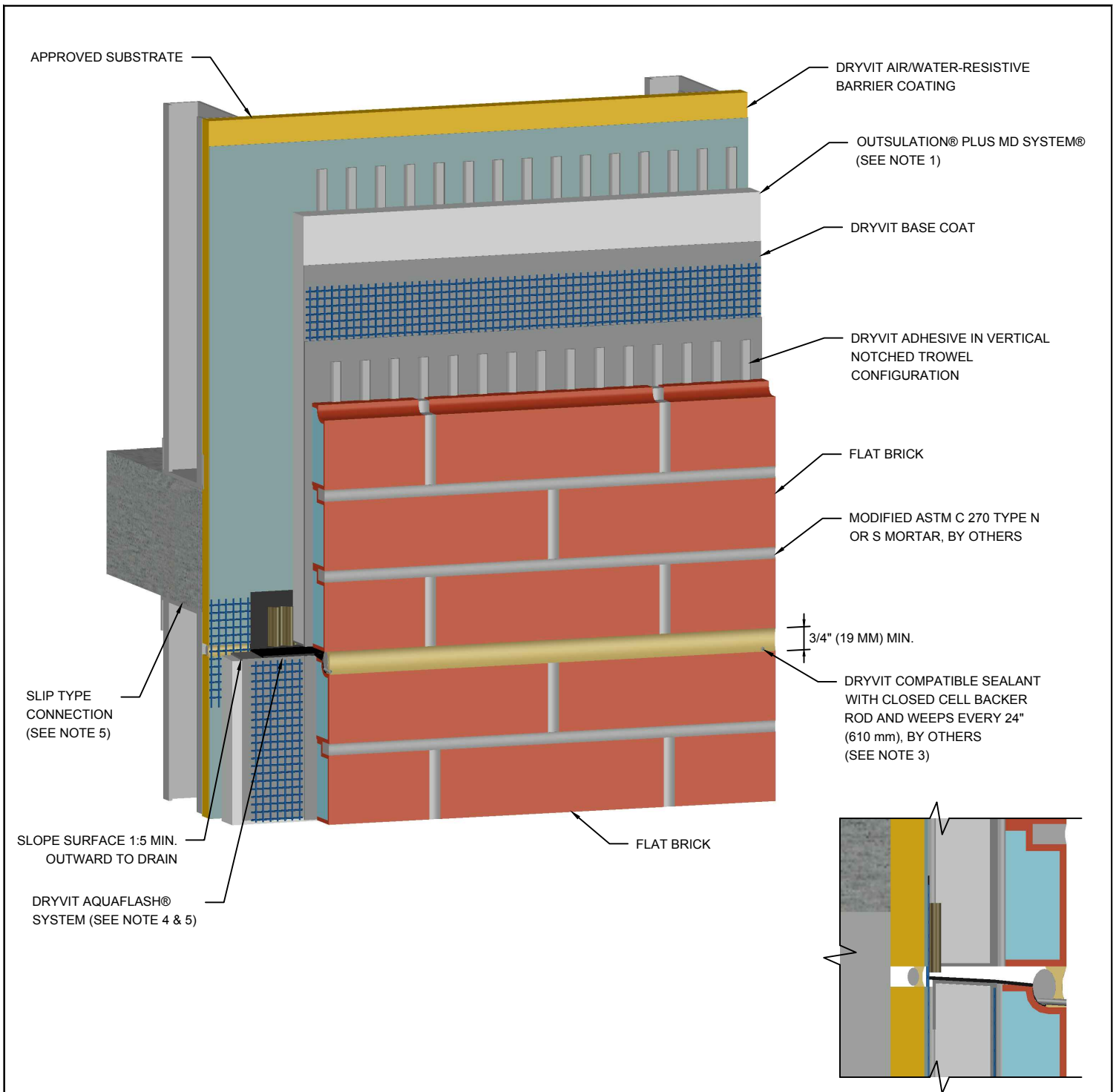
## NewBrick®

## Fascia/ Uninsulated Soffit Transition

**NOTES:**  
 1. OUTSULATION PLUS MD SYSTEM SHOWN FOR ILLUSTRATIVE PURPOSES ONLY. REFER TO APPROPRIATE DRYVIT SYSTEM LITERATURE FOR SYSTEM INSTALLATION.

The architecture, engineering, and design of the project using the Dryvit products is the responsibility of the project's design professional. All systems must comply with local building codes and standards. This detail is for general information and guidance only and Dryvit specifically disclaims any liability for the use of this detail and for the architecture, design, engineering or workmanship of any project. The project design professional determines, in its sole discretion, whether this detail or a functionally equivalent detail is best suited for the project. Use of a functionally equivalent detail does not violate Dryvit's warranty. This detail is subject to change without notice. Contact Dryvit to ensure you have the most recent version.





## NewBrick®

## Horizontal Slip Joint with Weeps

### NOTE:

1. OUTSULATION PLUS MD SYSTEM SHOWN FOR ILLUSTRATIVE PURPOSES ONLY. REFER TO APPROPRIATE DRYVIT SYSTEM LITERATURE FOR SYSTEM INSTALLATION.

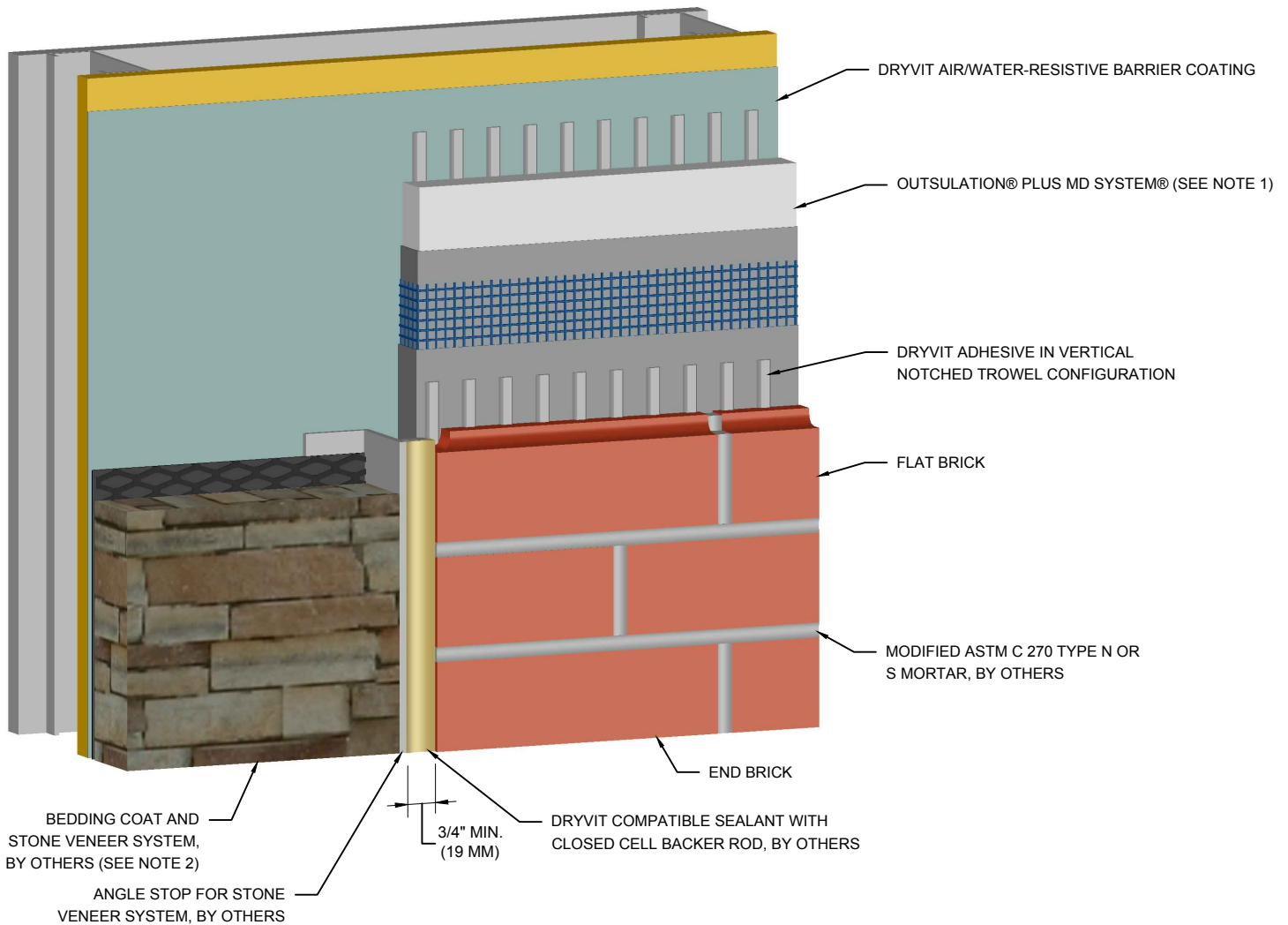
2. EXPANSION JOINT IS NECESSARY WHERE SIGNIFICANT DIFFERENTIAL MOVEMENT IS EXPECTED AT FLOOR LINES

3. LOCATE EXTERNAL SEALANT JOINT WITHIN 2" (51 MM) OF BREAK IN SUBSTRATE.

4. STOP AQUAFASH SHORT OF SEALANT BOND LINE..

5. FOR STEEL FRAMED CONSTRUCTION: EXPANSION JOINT IS INTENDED TO ACCOMMODATE MOVEMENT AT SLIP CONNECTION. FOR WOOD FRAMED CONSTRUCTION: EXPANSION JOINT IS INTENDED TO ACCOMMODATE CROSS GRAIN SHRINKAGE FOR FLOOR BEAMS.

The architecture, engineering, and design of the project using the Dryvit products is the responsibility of the project's design professional. All systems must comply with local building codes and standards. This detail is for general information and guidance only and Dryvit specifically disclaims any liability for the use of this detail and for the architecture, design, engineering or workmanship of any project. The project design professional determines, in its sole discretion, whether this detail or a functionally equivalent detail is best suited for the project. Use of a functionally equivalent detail does not violate Dryvit's warranty. This detail is subject to change without notice. Contact Dryvit to ensure you have the most recent version.



## NewBrick®

## Vertical Termination At Stone Veneer

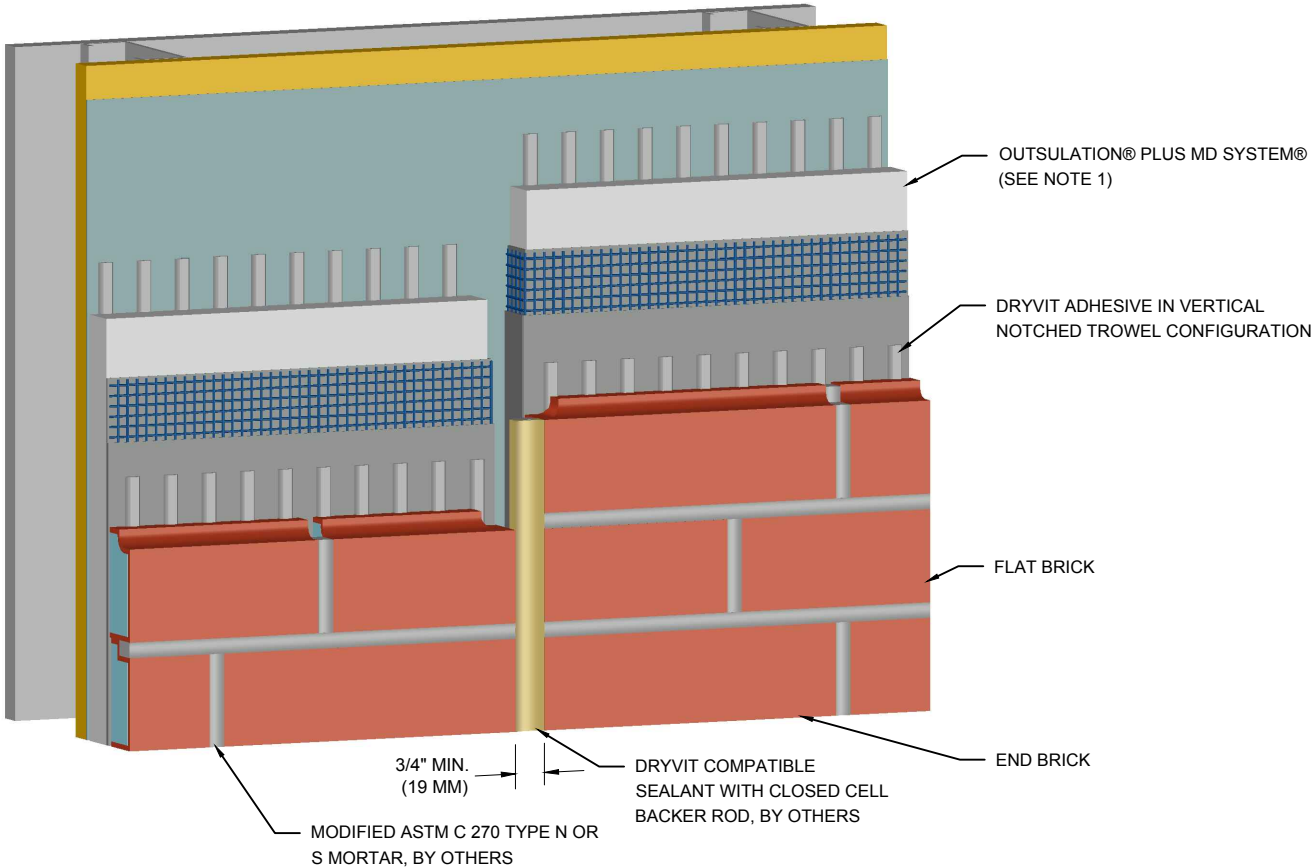
### NOTES:

1. OUTSULATION PLUS MD SYSTEM SHOWN FOR ILLUSTRATIVE PURPOSES ONLY. REFER TO APPROPRIATE DRYVIT SYSTEM LITERATURE FOR SYSTEM INSTALLATION.

2. FOR INSTALLATION OF DRYVIT AIR/WATER-RESISTIVE BARRIER COATING BENEATH CLADDINGS OTHER THAN DRYVIT EIFS, REFER TO DRYVIT PUBLICATIONS DS300 AND DS840.

The architecture, engineering, and design of the project using the Dryvit products is the responsibility of the project's design professional. All systems must comply with local building codes and standards. This detail is for general information and guidance only and Dryvit specifically disclaims any liability for the use of this detail and for the architecture, design, engineering or workmanship of any project. The project design professional determines, in its sole discretion, whether this detail or a functionally equivalent detail is best suited for the project. Use of a functionally equivalent detail does not violate Dryvit's warranty. This detail is subject to change without notice. Contact Dryvit to ensure you have the most recent version.





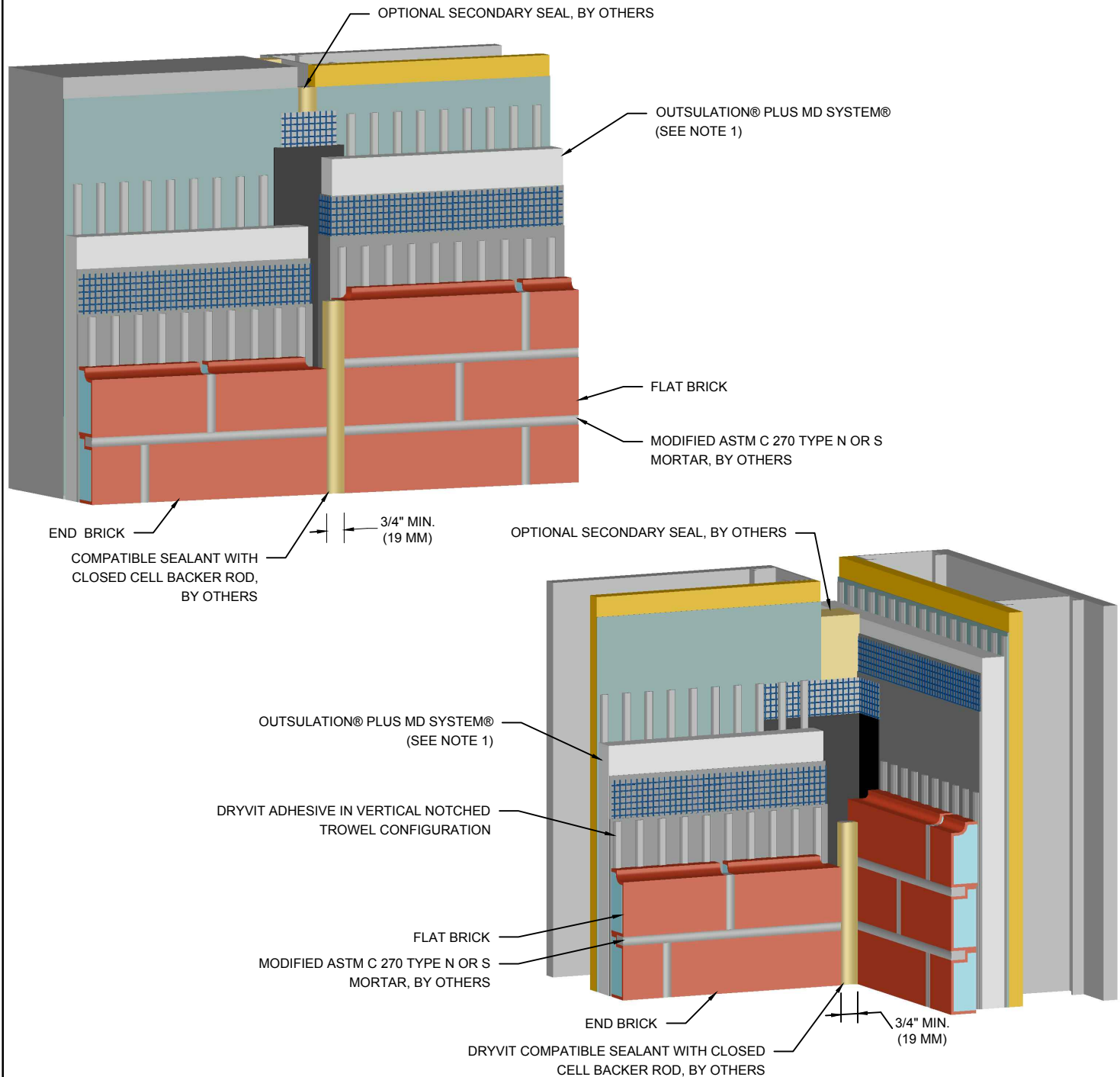
# NewBrick®

## Vertical Expansion Joint - EIFS

NOTE:

1. OUTSULATION PLUS MD SYSTEM SHOWN FOR ILLUSTRATIVE PURPOSES ONLY. REFER TO APPROPRIATE DRYVIT SYSTEM LITERATURE FOR SYSTEM INSTALLATION.

The architecture, engineering, and design of the project using the Dryvit products is the responsibility of the project's design professional. All systems must comply with local building codes and standards. This detail is for general information and guidance only and Dryvit specifically disclaims any liability for the use of this detail and for the architecture, design, engineering or workmanship of any project. The project design professional determines, in its sole discretion, whether this detail or a functionally equivalent detail is best suited for the project. Use of a functionally equivalent detail does not violate Dryvit's warranty. This detail is subject to change without notice. Contact Dryvit to ensure you have the most recent version.

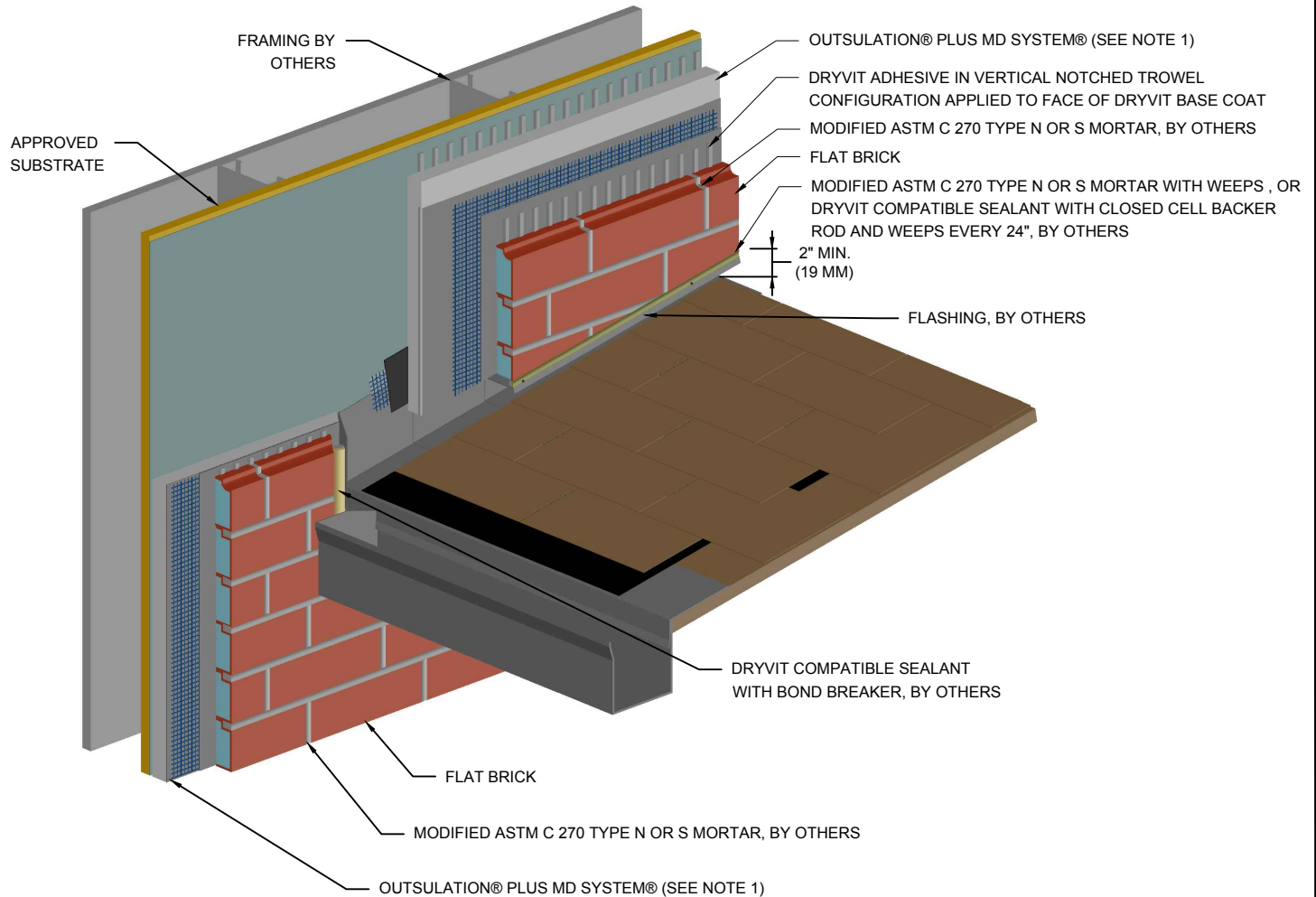


## NewBrick®

## Through-Wall Expansion Joint

**NOTE:**  
1. OUTSULATION PLUS MD SYSTEM SHOWN FOR ILLUSTRATIVE PURPOSES ONLY. REFER TO APPROPRIATE DRYVIT SYSTEM LITERATURE FOR SYSTEM INSTALLATION.

The architecture, engineering, and design of the project using the Dryvit products is the responsibility of the project's design professional. All systems must comply with local building codes and standards. This detail is for general information and guidance only and Dryvit specifically disclaims any liability for the use of this detail and for the architecture, design, engineering or workmanship of any project. The project design professional determines, in its sole discretion, whether this detail or a functionally equivalent detail is best suited for the project. Use of a functionally equivalent detail does not violate Dryvit's warranty. This detail is subject to change without notice. Contact Dryvit to ensure you have the most recent version.



## NewBrick®

## Termination at Sloped Roof

### NOTE:

1. OUTSULATION PLUS MD SYSTEM SHOWN FOR ILLUSTRATIVE PURPOSES ONLY. REFER TO APPROPRIATE DRYVIT SYSTEM FOR LITERATURE SYSTEM INSTALLATION.

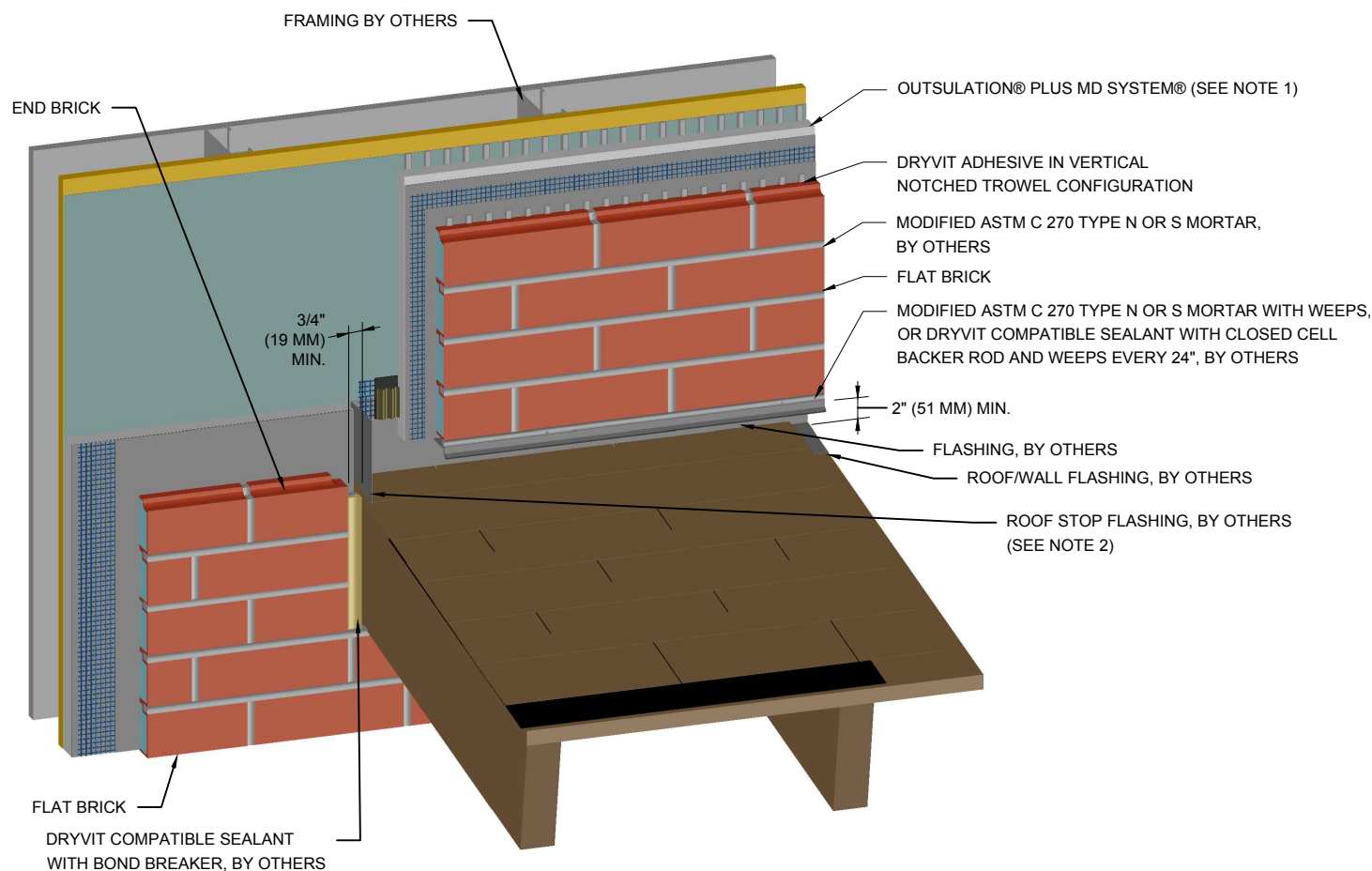
2. EXTEND DIVERTER FLASHING (KICKOUT) A MINIMUM OF 1" (25 MM) BEYOND FACE OF THE SYSTEM.

3. EXTEND ROOFING UNDERLAYMENT 5" (127 MM) UP VERTICAL WALL BEHIND METAL FLASHING.

4. METAL FLASHINGS ARE 10" (254 MM) X 2" (51 MM) LONGER THAN THE EXPOSED PORTION OF THE ROOFING SHINGLE AND ARE BENT IN HALF TO ALLOW FOR TWO 5" (127 MM) LEGS. ALTHOUGH NOT SHOWN, METAL FLASHINGS ARE STEP FLASHED (INTERWOVEN) WITH ROOFING SHINGLES.

5. FOR ADDITIONAL SLOPED ROOF DETAILS, REFER TO DRYVIT PUBLICATION DS106.

The architecture, engineering, and design of the project using the Dryvit products is the responsibility of the project's design professional. All systems must comply with local building codes and standards. This detail is for general information and guidance only and Dryvit specifically disclaims any liability for the use of this detail and for the architecture, design, engineering or workmanship of any project. The project design professional determines, in its sole discretion, whether this detail or a functionally equivalent detail is best suited for the project. Use of a functionally equivalent detail does not violate Dryvit's warranty. This detail is subject to change without notice. Contact Dryvit to ensure you have the most recent version.



## NewBrick®

## Termination at Roof Stop Flashing

### NOTE:

1. OUTSULATION PLUS MD SYSTEM SHOWN FOR ILLUSTRATIVE PURPOSES ONLY. REFER TO APPROPRIATE DRYVIT SYSTEM FOR LITERATURE SYSTEM INSTALLATION.

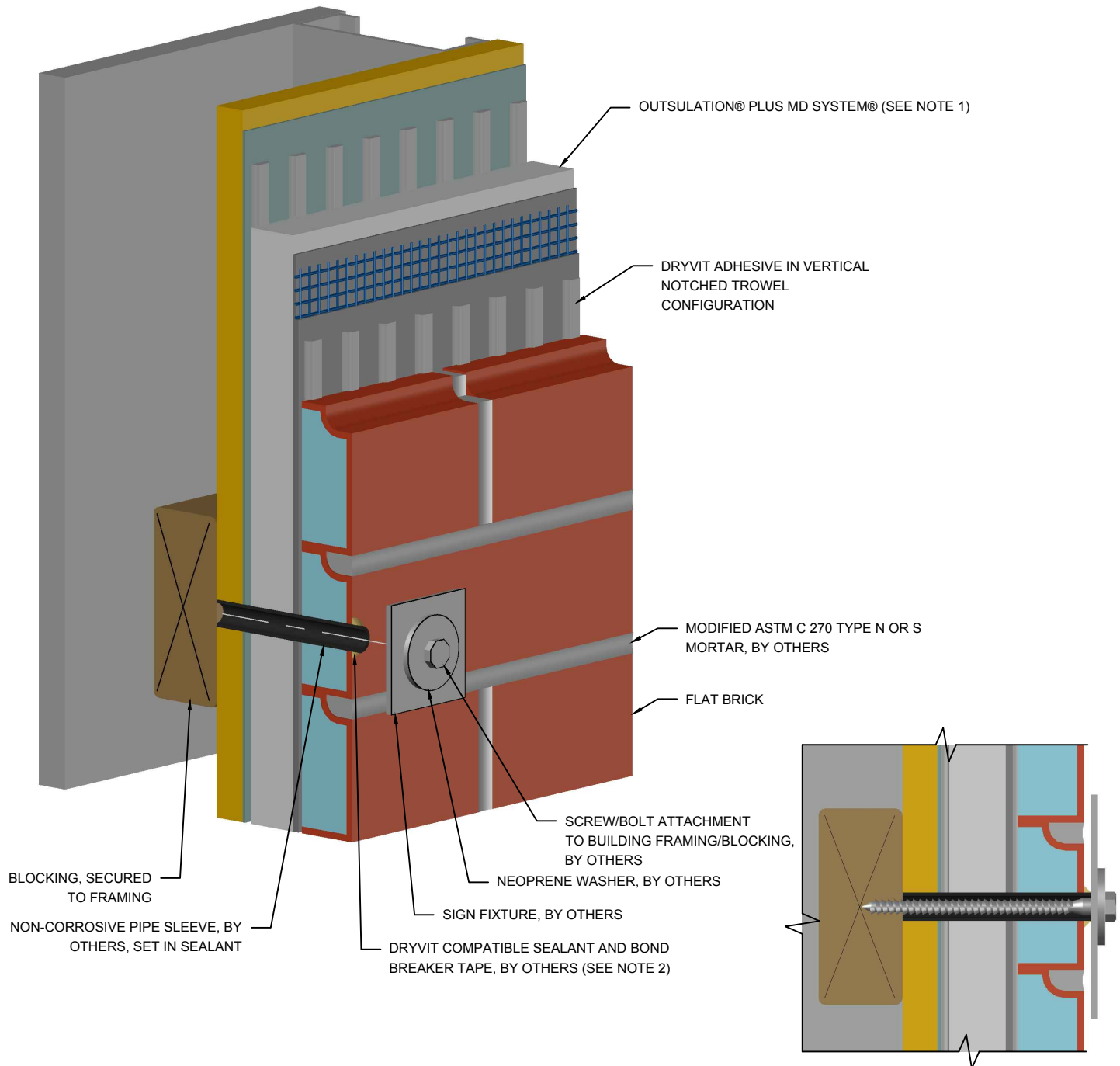
2. EXTEND ROOF STOP FLASHING 1" (25 MM) MINIMUM BEYOND FACE OF NEW BRICK.

3. ROOF STOP TO BE MADE FROM CORROSION RESISTANT MATERIAL MIN. 24 GAUGE WITH WATER TIGHT SEAMS.

4. EXTEND ROOFING UNDERLAYMENT 5" (127 MM) UP VERTICAL WALL BEHIND METAL FLASHING.

The architecture, engineering, and design of the project using the Dryvit products is the responsibility of the project's design professional. All systems must comply with local building codes and standards. This detail is for general information and guidance only and Dryvit specifically disclaims any liability for the use of this detail and for the architecture, design, engineering or workmanship of any project. The project design professional determines, in its sole discretion, whether this detail or a functionally equivalent detail is best suited for the project. Use of a functionally equivalent detail does not violate Dryvit's warranty. This detail is subject to change without notice. Contact Dryvit to ensure you have the most recent version.





# NewBrick®

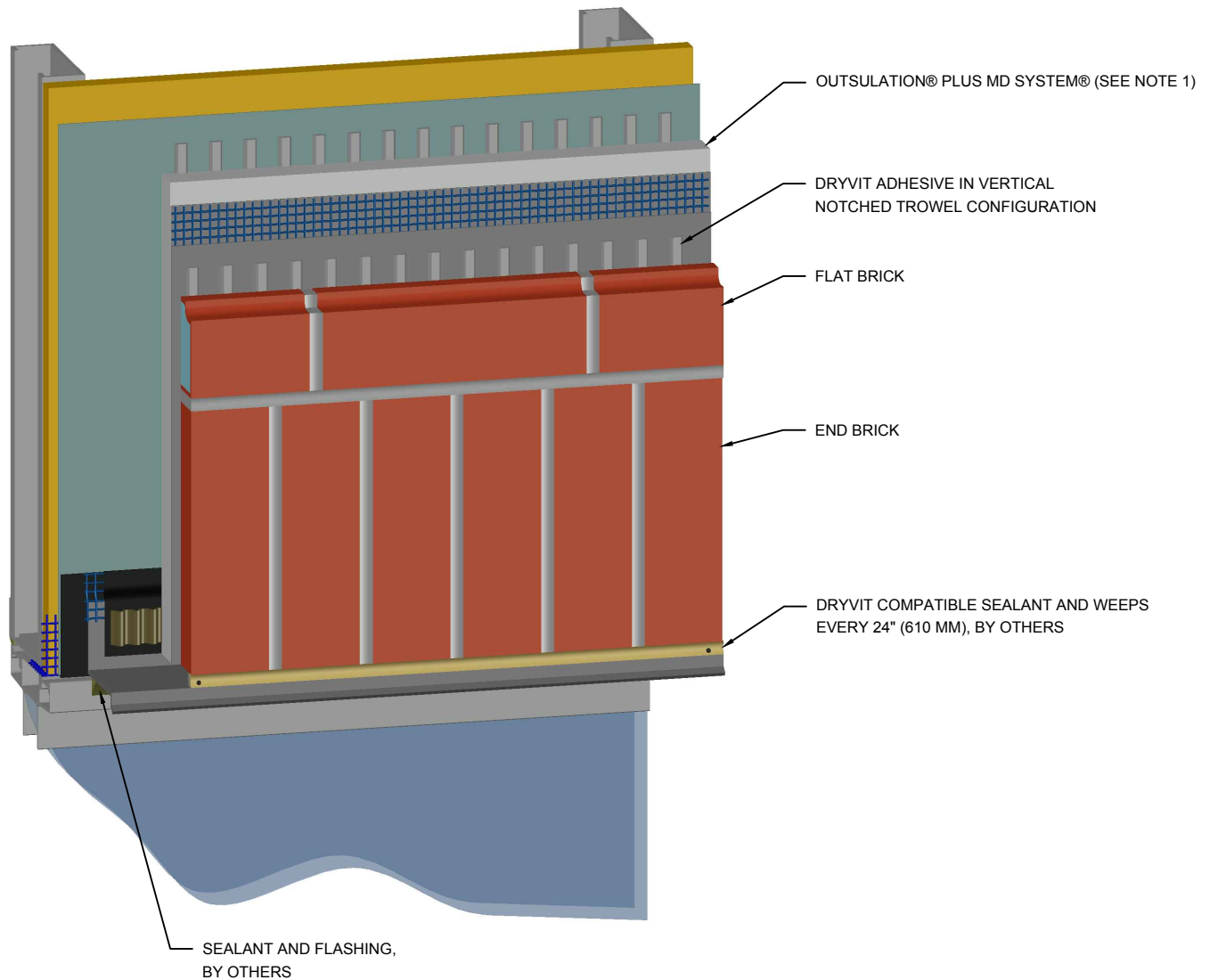
Sign Attachment

NOTE:

NOTE:  
1. INSULATION PLUS MD SYSTEM SHOWN FOR ILLUSTRATIVE PURPOSES ONLY. REFER TO APPROPRIATE DRYVIT SYSTEM FOR LITERATURE SYSTEM INSTALLATION.

2. PERIMETER OF PIPE SLEEVE IS SEALED TO PREVENT WATER ENTRY INTO WALL.

The architecture, engineering, and design of the project using the Dryvit products is the responsibility of the project's design professional. All systems must comply with local building codes and standards. This detail is for general information and guidance only and Dryvit specifically disclaims any liability for the use of this detail and for the architecture, design, engineering or workmanship of any project. The project design professional determines, in its sole discretion, whether this detail or a functionally equivalent detail is best suited for the project. Use of a functionally equivalent detail does not violate Dryvit's warranty. This detail is subject to change without notice. Contact Dryvit to ensure you have the most recent version.

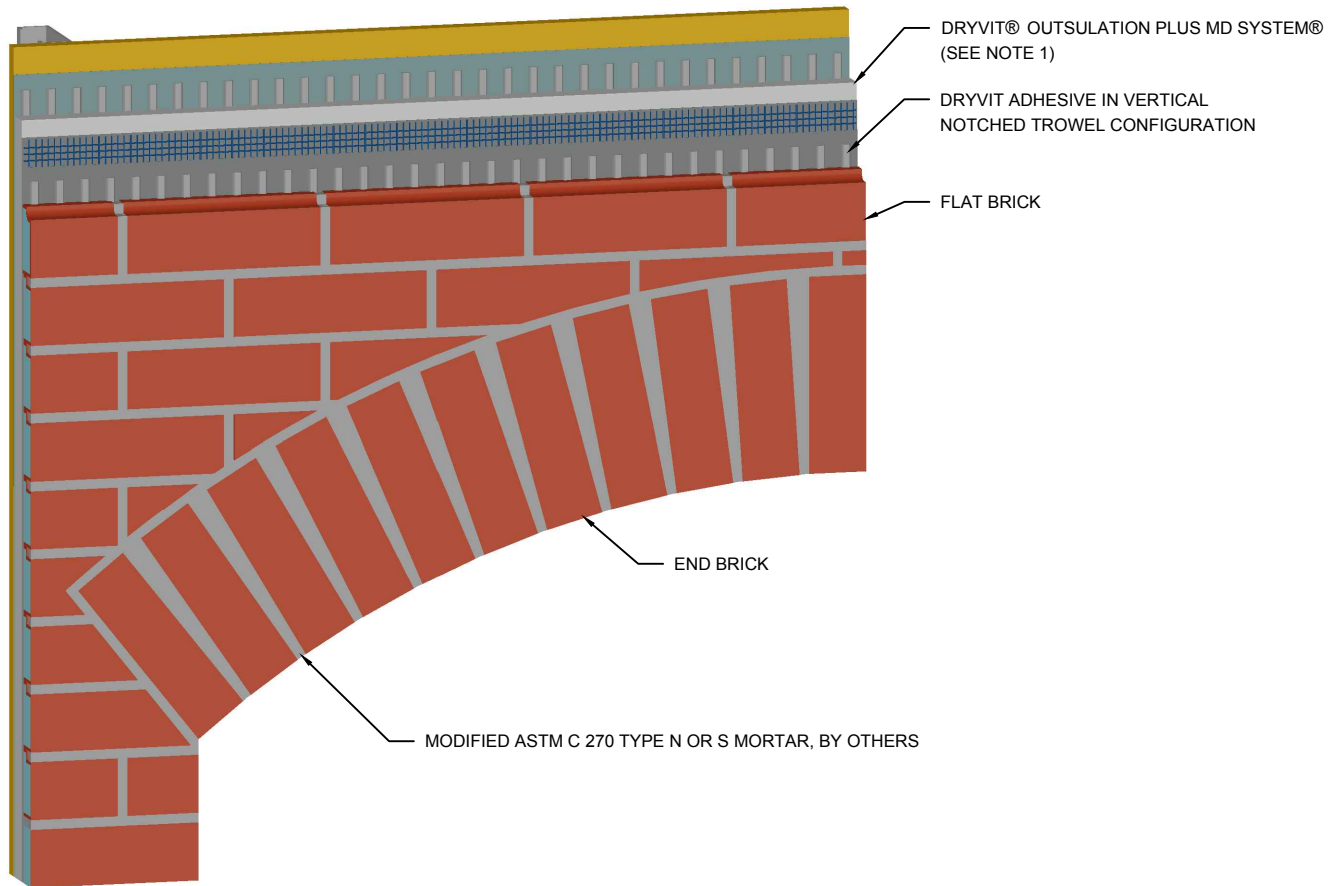


## NewBrick®

### Soldier Course at Window Head

**NOTE:**  
1. OUTSULATION PLUS MD SYSTEM SHOWN FOR ILLUSTRATIVE PURPOSES ONLY. REFER TO APPROPRIATE DRYVIT SYSTEM LITERATURE FOR SYSTEM INSTALLATION.

The architecture, engineering, and design of the project using the Dryvit products is the responsibility of the project's design professional. All systems must comply with local building codes and standards. This detail is for general information and guidance only and Dryvit specifically disclaims any liability for the use of this detail and for the architecture, design, engineering or workmanship of any project. The project design professional determines, in its sole discretion, whether this detail or a functionally equivalent detail is best suited for the project. Use of a functionally equivalent detail does not violate Dryvit's warranty. This detail is subject to change without notice. Contact Dryvit to ensure you have the most recent version.

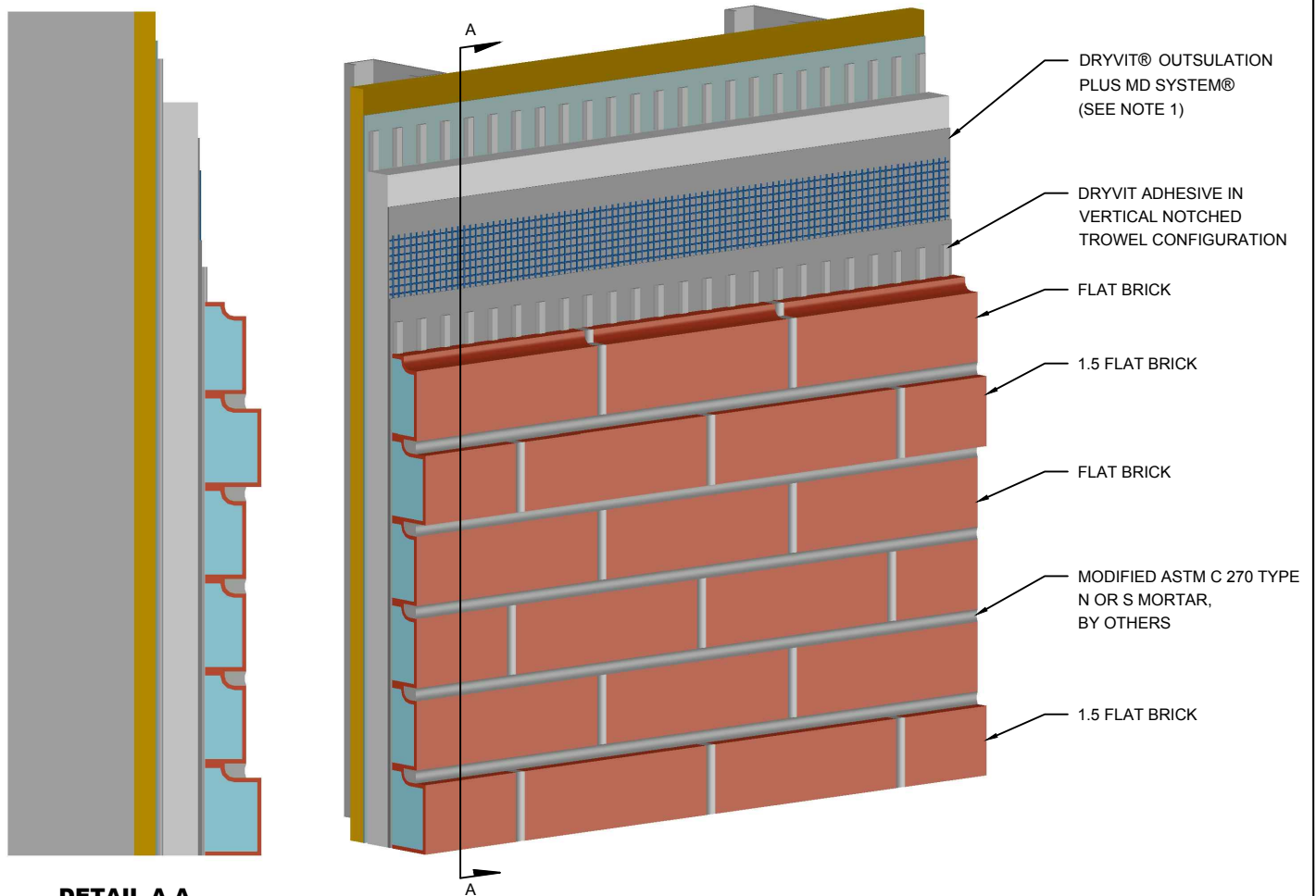


## NewBrick®

Archway

**NOTES:**  
1. OUTSULATION NEW BRICK SYSTEM SHOWN FOR ILLUSTRATIVE PURPOSES ONLY. REFER TO APPROPRIATE DRYVIT SYSTEM LITERATURE FOR SYSTEM INSTALLATION.

The architecture, engineering, and design of the project using the Dryvit products is the responsibility of the project's design professional. All systems must comply with local building codes and standards. This detail is for general information and guidance only and Dryvit specifically disclaims any liability for the use of this detail and for the architecture, design, engineering or workmanship of any project. The project design professional determines, in its sole discretion, whether this detail or a functionally equivalent detail is best suited for the project. Use of a functionally equivalent detail does not violate Dryvit's warranty. This detail is subject to change without notice. Contact Dryvit to ensure you have the most recent version.



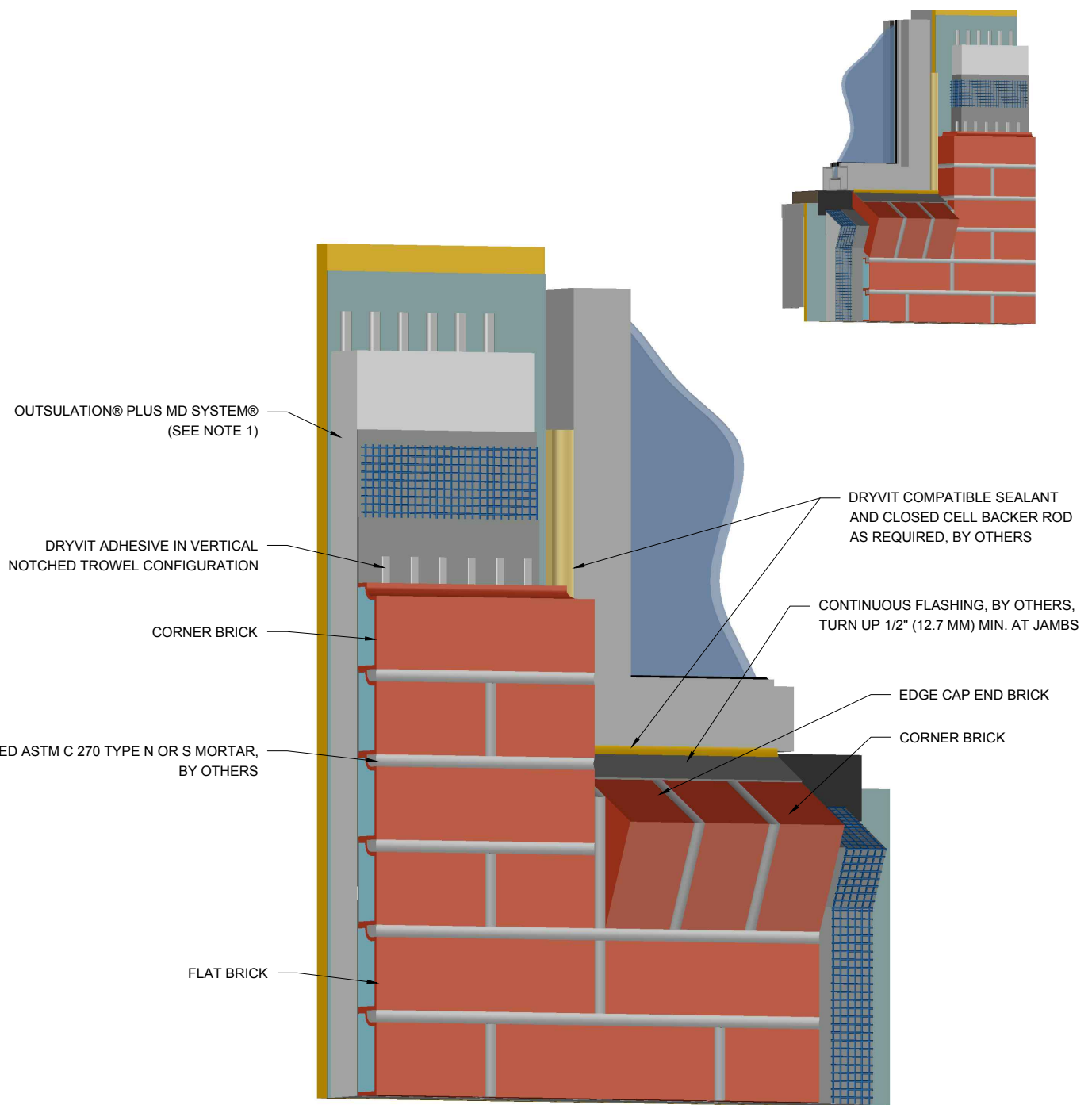
## NewBrick®

## Corbeling

### NOTES:

1. OUTSULATION NEW BRICK SYSTEM SHOWN FOR ILLUSTRATIVE PURPOSES ONLY. REFER TO APPROPRIATE DRYVIT SYSTEM LITERATURE FOR SYSTEM INSTALLATION.

The architecture, engineering, and design of the project using the Dryvit products is the responsibility of the project's design professional. All systems must comply with local building codes and standards. This detail is for general information and guidance only and Dryvit specifically disclaims any liability for the use of this detail and for the architecture, design, engineering or workmanship of any project. The project design professional determines, in its sole discretion, whether this detail or a functionally equivalent detail is best suited for the project. Use of a functionally equivalent detail does not violate Dryvit's warranty. This detail is subject to change without notice. Contact Dryvit to ensure you have the most recent version.



## NewBrick®

## Rowlock Window Sill - Jamb

### NOTE:

1. OUTSULATION PLUS MD SYSTEM SHOWN FOR ILLUSTRATIVE PURPOSES ONLY. REFER TO APPROPRIATE DRYVIT SYSTEM LITERATURE FOR SYSTEM INSTALLATION.

2. FOR DIMENSIONS NOT SHOWN SEE NB 0.0.08.

The architecture, engineering, and design of the project using the Dryvit products is the responsibility of the project's design professional. All systems must comply with local building codes and standards. This detail is for general information and guidance only and Dryvit specifically disclaims any liability for the use of this detail and for the architecture, design, engineering or workmanship of any project. The project design professional determines, in its sole discretion, whether this detail or a functionally equivalent detail is best suited for the project. Use of a functionally equivalent detail does not violate Dryvit's warranty. This detail is subject to change without notice. Contact Dryvit to ensure you have the most recent version.

# APPENDIX A

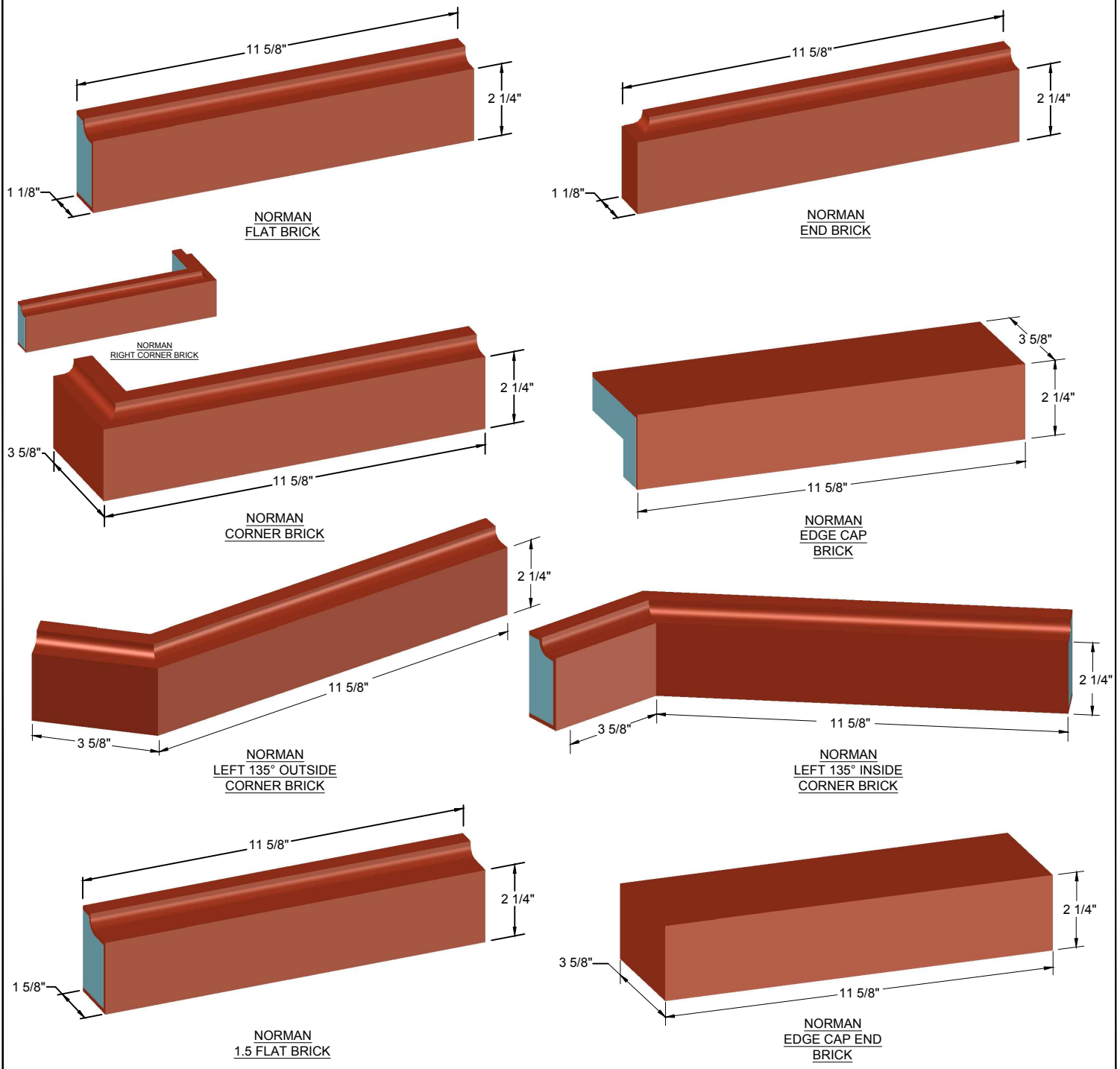
## NewBrick Dimensions

**NewBrick®**

Appendix A

The architecture, engineering, and design of the project using the Dryvit products is the responsibility of the project's design professional. All systems must comply with local building codes and standards. This detail is for general information and guidance only and Dryvit specifically disclaims any liability for the use of this detail and for the architecture, design, engineering or workmanship of any project. The project design professional determines, in its sole discretion, whether this detail or a functionally equivalent detail is best suited for the project. Use of a functionally equivalent detail does not violate Dryvit's warranty. This detail is subject to change without notice. Contact Dryvit to ensure you have the most recent version.





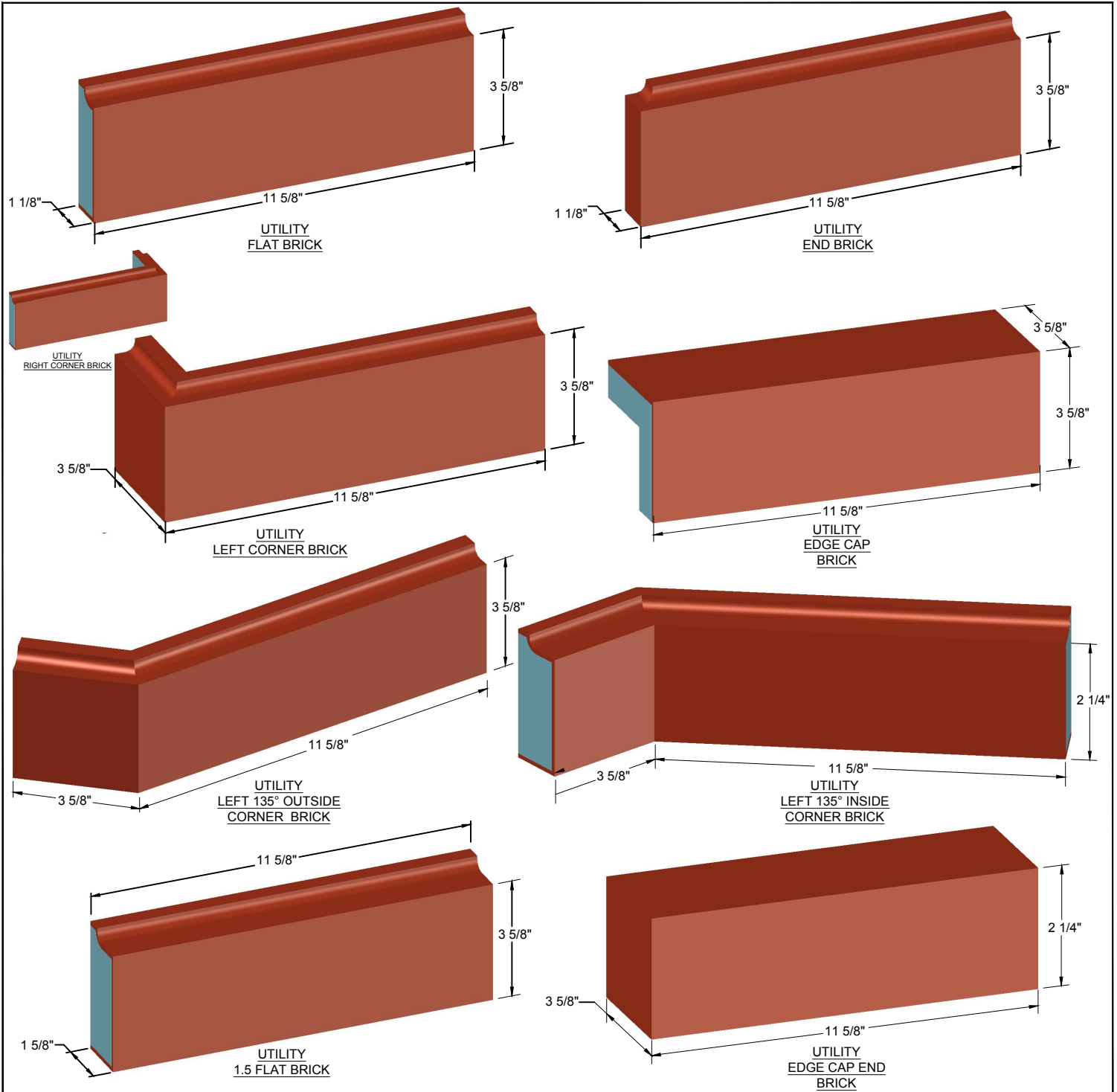
## NewBrick®

### NewBrick Norman Dimensions

#### NOTE:

1. NEWBRICK HAS A MINIMUM THICKNESS OF 1 1/8 in (29mm), UNLESS OTHERWISE NOTED.
2. NEWBRICK HAS A 3/8 IN (9.5mm) HORIZONTAL ALIGNMENT GUIDE.

The architecture, engineering, and design of the project using the Dryvit products is the responsibility of the project's design professional. All systems must comply with local building codes and standards. This detail is for general information and guidance only and Dryvit specifically disclaims any liability for the use of this detail and for the architecture, design, engineering or workmanship of any project. The project design professional determines, in its sole discretion, whether this detail or a functionally equivalent detail is best suited for the project. Use of a functionally equivalent detail does not violate Dryvit's warranty. This detail is subject to change without notice. Contact Dryvit to ensure you have the most recent version.



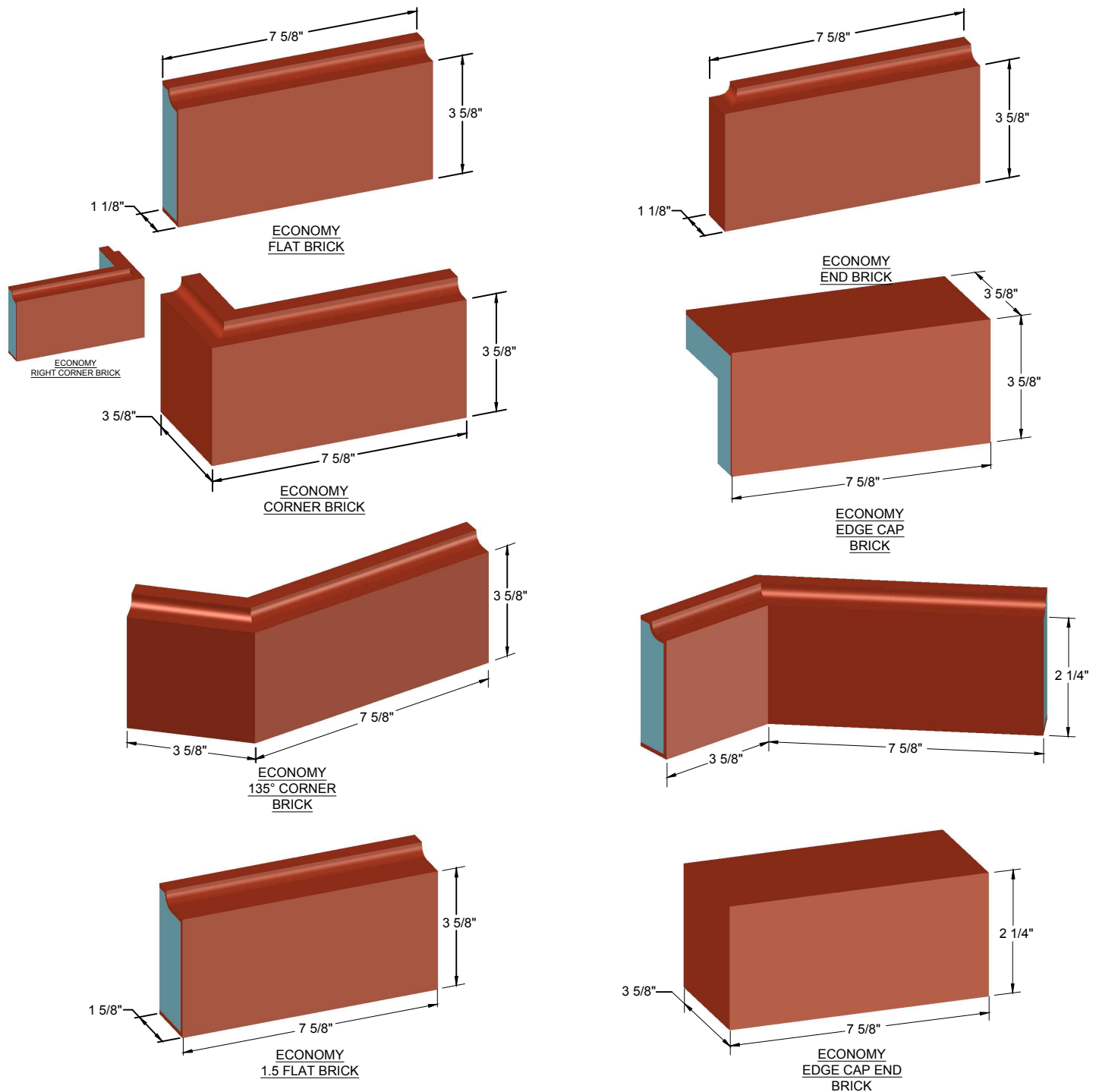
## NewBrick®

### NewBrick Utility Dimensions

#### NOTE:

1. NEWBRICK HAS A MINIMUM THICKNESS OF 1 1/8 in (29mm), UNLESS OTHERWISE NOTED.
2. NEWBRICK HAS A 3/8 IN (9.5mm) HORIZONTAL ALIGNMENT GUIDE.

The architecture, engineering, and design of the project using the Dryvit products is the responsibility of the project's design professional. All systems must comply with local building codes and standards. This detail is for general information and guidance only and Dryvit specifically disclaims any liability for the use of this detail and for the architecture, design, engineering or workmanship of any project. The project design professional determines, in its sole discretion, whether this detail or a functionally equivalent detail is best suited for the project. Use of a functionally equivalent detail does not violate Dryvit's warranty. This detail is subject to change without notice. Contact Dryvit to ensure you have the most recent version.



## NewBrick®

### NewBrick Economy Dimensions

**NOTE:**

1. NEWBRICK HAS A MINIMUM THICKNESS OF 1 1/8 in (29mm), UNLESS OTHERWISE NOTED.
2. NEWBRICK HAS A 3/8 IN (9.5mm) HORIZONTAL ALIGNMENT GUIDE.

The architecture, engineering, and design of the project using the Dryvit products is the responsibility of the project's design professional. All systems must comply with local building codes and standards. This detail is for general information and guidance only and Dryvit specifically disclaims any liability for the use of this detail and for the architecture, design, engineering or workmanship of any project. The project design professional determines, in its sole discretion, whether this detail or a functionally equivalent detail is best suited for the project. Use of a functionally equivalent detail does not violate Dryvit's warranty. This detail is subject to change without notice. Contact Dryvit to ensure you have the most recent version.