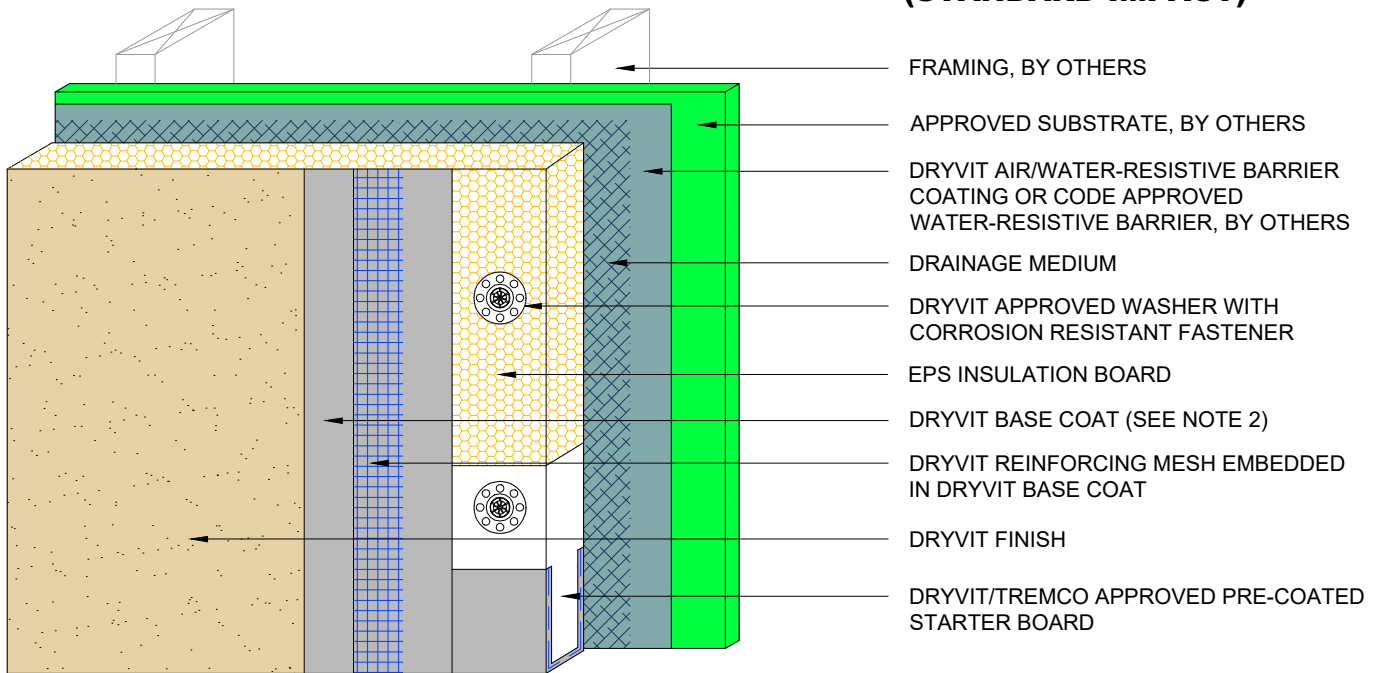


**EIMA CLASS I  
(STANDARD IMPACT)**



- FRAMING, BY OTHERS
- APPROVED SUBSTRATE, BY OTHERS
- DRYVIT AIR/WATER-RESISTIVE BARRIER COATING OR CODE APPROVED WATER-RESISTIVE BARRIER, BY OTHERS
- DRAINAGE MEDIUM
- DRYVIT APPROVED WASHER WITH CORROSION RESISTANT FASTENER
- EPS INSULATION BOARD
- DRYVIT BASE COAT (SEE NOTE 2)
- DRYVIT REINFORCING MESH EMBEDDED IN DRYVIT BASE COAT
- DRYVIT FINISH
- DRYVIT/TREMCO APPROVED PRE-COATED STARTER BOARD

**NOTE:**

1. DRYVIT RECOMMENDS THAT GROUND FLOOR APPLICATIONS AND ALL FACADES EXPOSED TO ABNORMAL STRESS, HIGH TRAFFIC, OR DELIBERATE IMPACT HAVE THE BASE COAT REINFORCED WITH PANZER® MESH PRIOR TO STANDARD OR STANDARD PLUS MESH. LOCATION OF HIGH IMPACT ZONES SHOULD BE INDICATED ON CONTRACT DRAWINGS.
2. DRYVIT GENESIS® OR GENESIS DM BASE COAT IS REQUIRED FOR MECHANICALLY FASTENED SYSTEMS 1-3.

*The architecture, engineering, and design of the project using the Dryvit and Tremco products are the responsibility of the project's design professional. All products and systems must comply with local building codes and standards. This detail is for general information and guidance only and Dryvit and Tremco specifically disclaims any liability for the use of this detail. The project design professional determines, in its sole discretion, whether this detail or a functionally equivalent detail is best suited for the project. This detail is subject to change without notice. Contact Dryvit and Tremco to ensure you have the most recent version.*

**Outsulation® RMD System™**

 Dryvit Technical Support: 800-556-7752	Detail: System 1 Cutaway with Starter Board				File Name:	 Construction Products Group
	Drawn by: HDE	Checked by: CS	Scale: NTS	Date: 5/19/2023	O-RMD 1a	
<a href="http://www.tremcocpg.com">www.tremcocpg.com</a>						