



# TECHNICAL DATA SHEET

## Dryvit Drainage Mat™

A Flexible 3/16 in (6mm) Thick Mat for  
Use with the Outsulation® LCMD  
Systems 1-5, Outsulation® RMD or  
Outsulation® SMD Systems

### PRODUCT DESCRIPTION

Dryvit Drainage Mat is a flexible, thermally pre-formed, in a zigzag configuration, mat made of polyamide and produced in a pale blue color for identification. The product is packaged in a 39 in (990 mm) by 61.5 ft (18.75 m) roll and is approximately 3/16 in (6 mm) thick. Dryvit Drainage Mat is used to create a drainage plane for the Outsulation LCMD Systems 1-5, Outsulation RMD or Outsulation SMD Systems.

### FEATURES & BENEFITS

- Continuous ventilation and drainage remove incidental moisture
- Conforms to irregular surfaces and corners with complete and effective coverage
- Provides 100% coverage of wall area
- Designed to create open flow path even at excessive pressures
- Not brittle in cold weather and Flexible, thermally-preformed
- Packaged in a 39 in (990 mm) by 61.5 ft (18.75 mm) roll
- Easily cut-to-size and Easy to ship, use and store
- Redirects and draws moisture away from vulnerable wall sheathing materials
- Filter fabric assures drain path remains completely clear of stucco or mortar
- Dimensionally stable in hot weather

### INSTALLATION

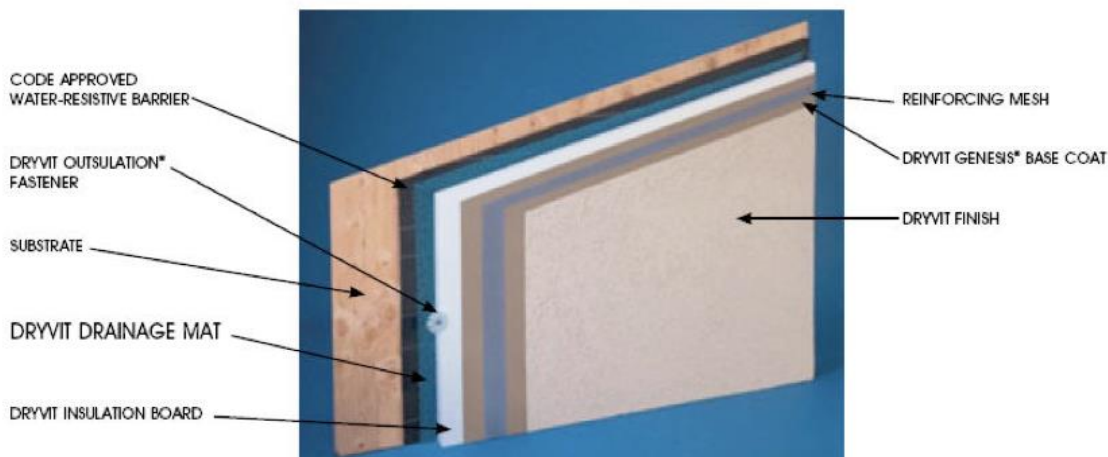
The Dryvit Drainage Mat is fastened to the wall using 1/2 in (12.7 mm) staples or roofing nails spaced 12 in (305 mm) vertically by 16 in (406 mm) horizontally. It is installed over the water-resistant barrier so that the corrugated “V” pattern is oriented vertically. Refer to published Outsulation LCMD Systems 1-5 Application Instructions, DS172, Outsulation RMD System Application Instructions, DS143, or Outsulation SMD System Application Instructions, DS123.

### STORAGE

Store Dryvit Drainage Mat rolls in a horizontal position protected from weather and out of direct sunlight.

### TECHNICAL AND FIELD SERVICES

Available on request



---

## WARRANTY

A repair or replacement warranty is available on all Dryvit products. Visit <https://www.tremcosealants.com/warranties/> for details.

---

### PHYSICAL PROPERTIES

CORE THICKNESS		TOTAL THICKNESS		CORE WEIGHT		CORE WIDTH	
MM	INCHES	MM	INCHES	OZ/YD <sup>2</sup>	G/M <sup>2</sup>	METERS	INCHES
6	.24	6.6	0.26	8.0	226.8	1.0	39.0

---

### PERFORMANCE PROPERTIES

CORE THICKNESS	DRAINAGE EFFICIENCY	AIR VENTILATION (L/S)	ASTM 2925	ANNEX1
ASTM E84	ASTM 2925 Annex 2	1 PA	5 Pa	10 Pa
Class A	97%	0.15	0.53	0.90

---

### MATERIAL PROPERTIES

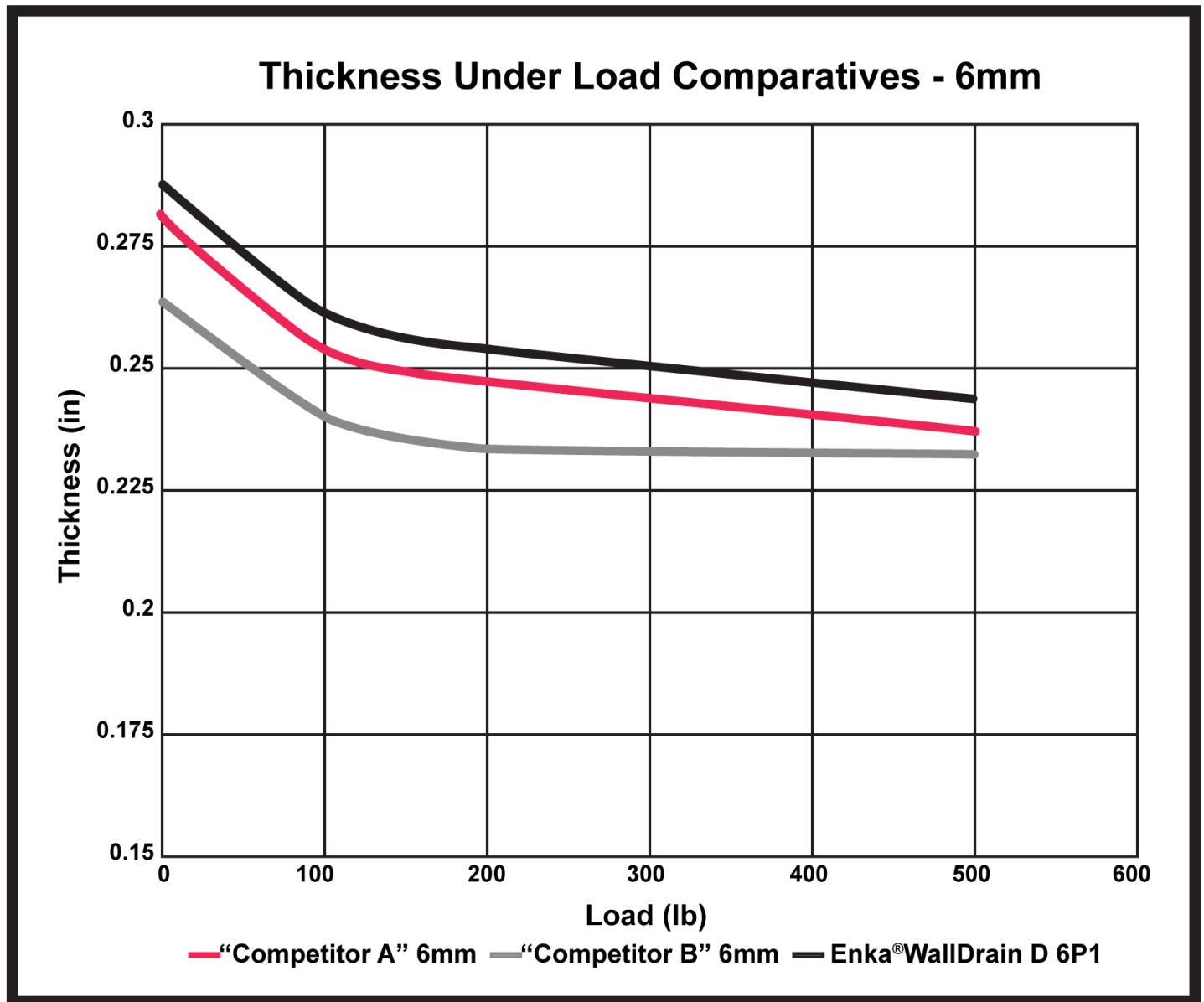
CORE STYLE	CORE COLOR	FABRIC COLOR	CORE MATE
U Groove	Blue	Grey	PP

---

### FABRIC PROPERTIES

FABRIC MATERIAL	FABRIC WEIGHT		FABRIC FLAP	
Type	oz/yd <sup>2</sup>	g/m <sup>2</sup>	cm	inches
Class A	1.18	40	7.6 – 12.7	3.0 – 5.0

COMPARATIVE COMPRESSION RESULTS



Please refer to our website at [www.dryvit.com](http://www.dryvit.com) for the most up-to-date Product Data Sheets.

NOTE: All Dryvit Safety Data Sheets (SDS) are in alignment with the Globally Harmonized System of Classification and Labelling of Chemicals (GHS) requirements.

DS446/0125

Tremco Construction Products Group (CPG) brings together Tremco CPG Inc. and its Dryvit and Nudura brands; Willseal; Prebuck LLC; Tremco Barrier Solutions, Inc.; Weatherproofing Technologies, Inc. and its Pure Air Control Services and Canam Building Envelope Specialists offerings; and Weatherproofing Technologies Canada, Inc.



[dryvit.com](http://dryvit.com) | 800.556.7752



Construction Products Group