



**OUTSULATION<sup>®</sup> HDCI<sup>™</sup>**

**SECUROCK EXOAIR 430<sup>®</sup> SYSTEM**

High Durability Continuous Insulation



**Belmont University**  
Nashville, TN

**Hyatt Summerfield Suites**  
Charlotte, NC  
(Reflectit Coating)

## ELIMINATE THEIR IMPACT!



## OUTSULATION® HDCI™ SYSTEM

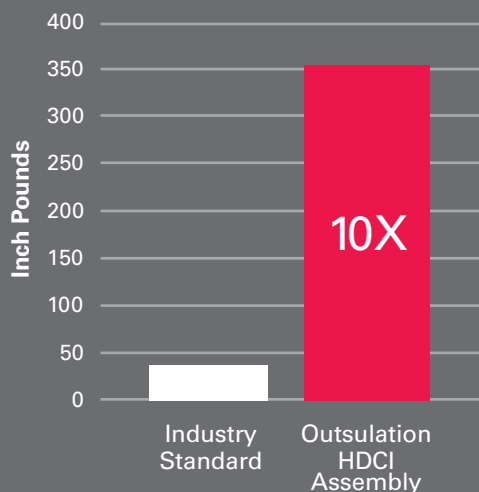
### An Outsulation HDCI system is more than just a pretty face... it is one tough wall.

Impact resistance can be a critical design criteria for any building. Outsulation HDCI system delivers design freedom, exceptional performance and a high level of impact resistance with the peace of mind that is backed by a written 20-year performance warranty. If the lamina gets punctured, we will repair it\*. Installing a “blanket” of Continuous Insulation (CI) to exterior walls has been repeatedly shown to be significantly more energy efficient than cavity insulation. CI eliminates thermal bridging, which occurs in structural members (both steel and wood). In most states, the use of CI is now required by Code and it is the prescribed approach under ASHRAE 90.1-2013. Increasing the energy efficiency of buildings results in a significantly lower carbon footprint, and equally important, since less energy is consumed, it reduces operating costs.

\*Contact Dryvit Systems, Inc. for full warranty details.

### 10X MORE IMPACT RESISTANT

Comparative Impact Resistance of Reinforcing Meshes



### ENGINEERED WALL SOLUTION PROVIDES:

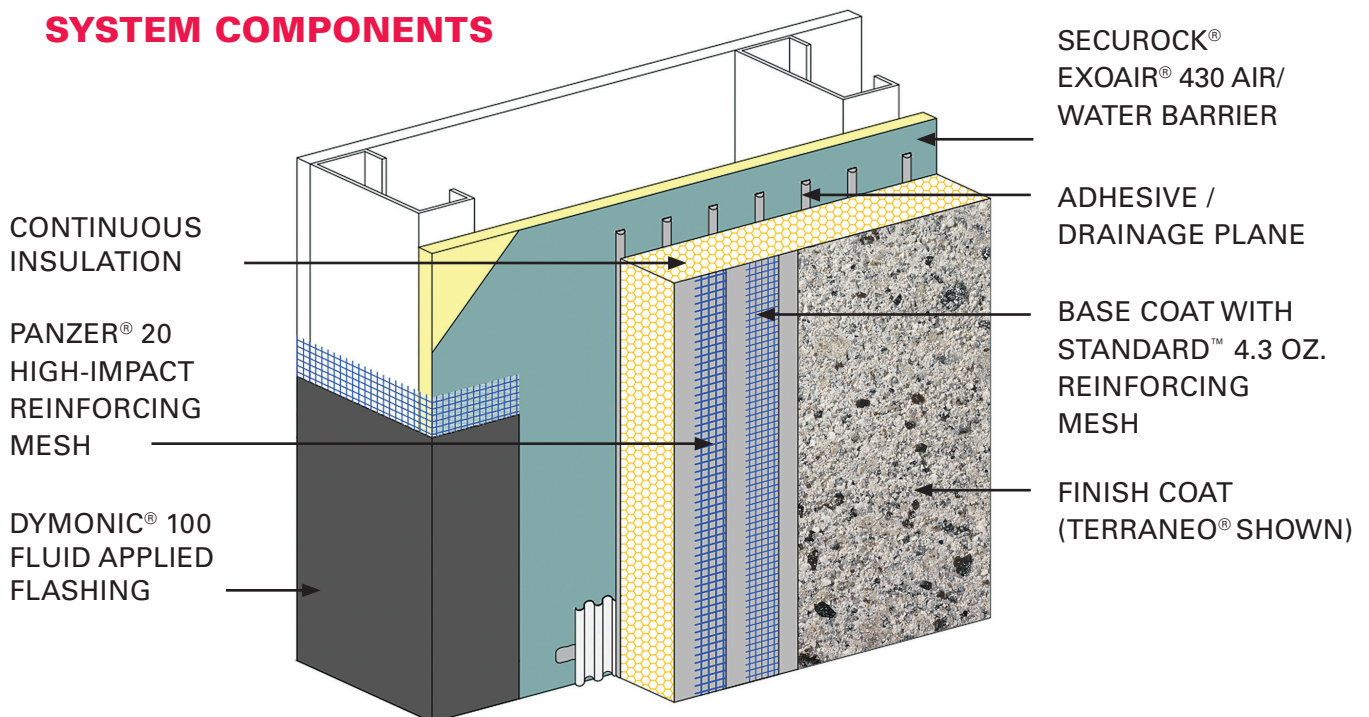
- Warranted Puncture Resistance
- Continuous Insulation (CI)
- Integrated Air and Water-Resistive Barrier
- Critical Design Interface
- NFPA 285 Approved
- Environmental Product Declaration (EPD)
- All from one single source. Dryvit.





**The Streets of Woodfield**  
Schaumburg, IL

**OUTSULATION® HDCI™  
SYSTEM COMPONENTS**



## IMAGINE THE IMPACT.

Since 1969, millions of BTUs that would otherwise have been needed to heat and cool more than 500,000 buildings, have been saved because these structures were clad with Outsulation Systems.

The use of Outsulation Systems can contribute to a large number of LEED credit points for projects. Additionally, Dryvit maintains an EPD (Environmental Product Declaration) on the Outsulation family of systems and is validated by Underwriters Laboratories (UL).

### VENEERS



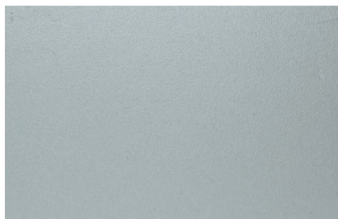
Seamless Stone



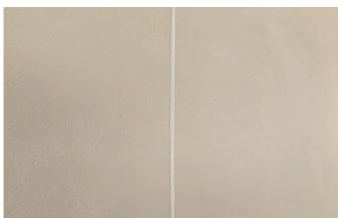
Traditional Plaster Renders



Old World or "Aged" Plaster



Metal Panel Effects



Limestone



Brick

[dryvit.com/hdci](http://dryvit.com/hdci)



SECUROCK® EXOAIR® 430



Dryvit Systems, Inc.  
One Energy Way  
West Warwick, RI 02893  
401-822-4100  
[dryvit.com](http://dryvit.com)

Dryvit Systems, Inc and Tremco are a part of Tremco Construction Products Group.

Information contained in this brochure conforms to the standard detail recommendations and specifications for the installation of Dryvit Systems, Inc. products as of the date of publication of this document and is presented in good faith. Dryvit Systems, Inc. assumes no liability, expressed or implied, as to the architecture, engineering or workmanship of any product. To ensure that you are using the latest, most complete information, contact Dryvit Systems, Inc.

© Dryvit Systems, Inc. 2020  
Printed in U.S.A. R1: 12-20-19 12-19 5M  
DS282