



OUTSULATION



THIS IS WHAT YOU SEE.



THIS IS WHAT YOU GET.

- **Faster, less costly construction**
- **Lower energy bills**
- **Less environmental impact**
- **Lifetime warranty potential**

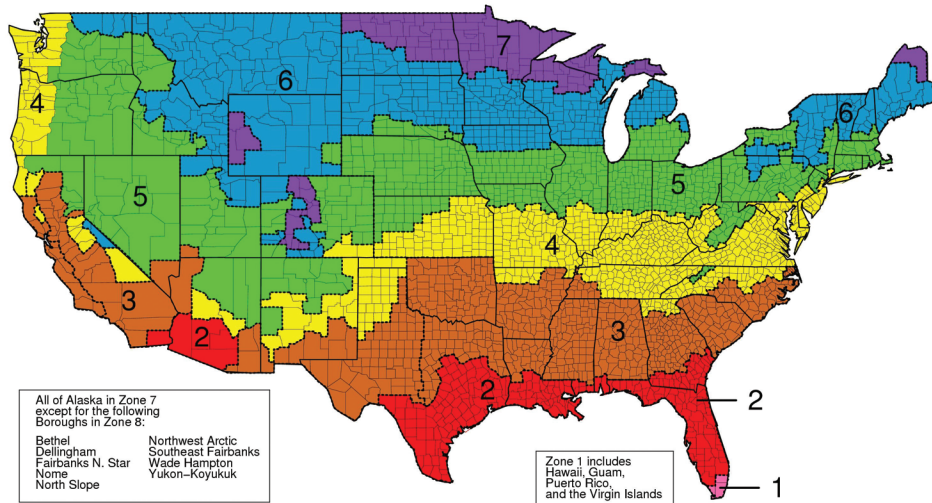


The High Performance Cladding Choice for New Construction or Renovation

Dryvit Outsulation® X is a highly energy efficient, design flexible, and cost effective exterior cladding system for all types of construction, and meets both current and proposed ASHRAE design standards and IGCC/IECC code requirements for the use of exterior continuous insulation (ci).

Ideal for new construction and renovation, Outsulation X provides a single source solution for the air and weather barrier, insulation, and aesthetic components of the exterior wall – combining these into an engineered, fully tested, code-compliant system. Best of all, Outsulation X is installed by a single, professional contractor and all the materials are warranted by Dryvit.

Minimum Insulation Requirements Per ASHRAE Green Building Standard

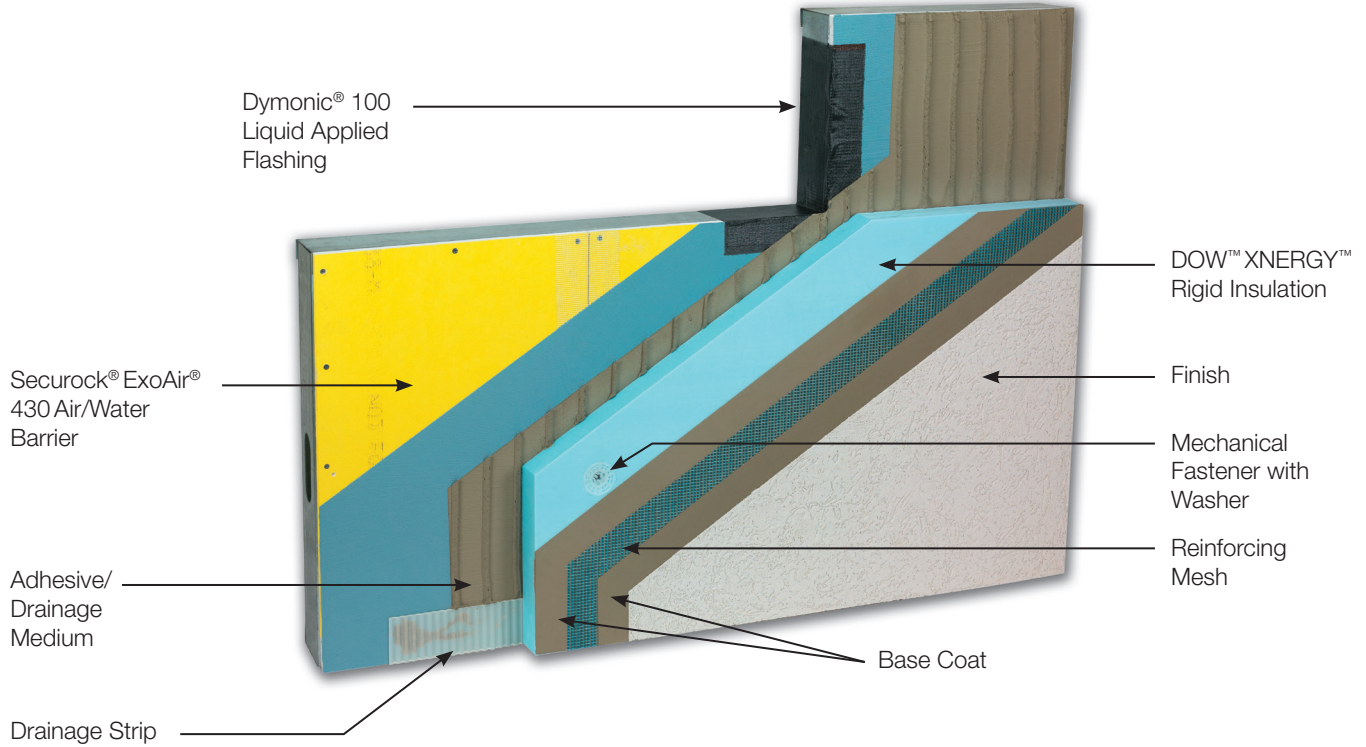


Shown at the left is the ASHRAE climate zone map of the United States. Note that all zones require exterior continuous insulation (ci).

ASHRAE Standard 189.1-2009								
Climate zone	1	2	3	4	5	6	7	8
Metal framed	R-13 + R-5.0 ci	R-13 + R-5.0 ci	R-13 + R-5.0 ci	R-13 + R-10.0 ci	R-13 + R-10.0 ci	R-13 + R-10.0 ci	R-13 + R-10.0 ci	R-13 + R-10.0 ci
Wood framed and other	R-13 + R-3.8 ci	R-13 + R-3.8 ci	R-13 + R-3.8 ci	R-13 + R-3.8 ci	R-13 + R-7.5 ci	R-13 + R-10.0 ci	R-13 + R-10.0 ci	R-13 + R-10.0 ci

This chart shows the ASHRAE 189.1-2009 prescriptive requirements for cavity and exterior insulation in both steel and wood framed walls in commercial construction, for all 8 climate zones.

Outsulation X System



Description and Function of System Components

Dymonic® 100 Liquid Applied Flashing

- Liquid applied sealant
- Seamless protection of wall openings
- Superior to “peel and stick” membranes

Securock® ExoAir® 430 Air and Water Barrier Panel

- Pre-applied Tremco fluid-applied synthetic permeable air/water barrier membrane to the face of USG’s Brand Ultralight Glass-Mat Sheathing panels
- Meets model Code requirements for air/water-resistive barrier
- Meets ASHRAE 189.1-2009 requirement for air barrier, all climate zones
- Controlled factory environment ensures proper mil thickness and membrane uniformity

Adhesive/Drainage Medium

- Adheres insulation board to water resistive barrier
- Vertical notch configuration provides drainage for incidental moisture

DOW™ XENERGY™ Rigid Insulation

- Provides insulation (2” = R10)
- Eliminates thermal bridging in frame construction
- Meets continuous insulation requirement for all zones per ASHRAE 189.1-2009 and IGCC/IECC 2012

Base Coat and Reinforcing Mesh

- Combine to provide impact resistance and primary weather barrier

Finish Coat

- Blend of acrylic copolymers, natural aggregates and highly UV resistant pigments with proven dirt pickup and mildew resistance
- Available in variety of textures and styles

The X Factor

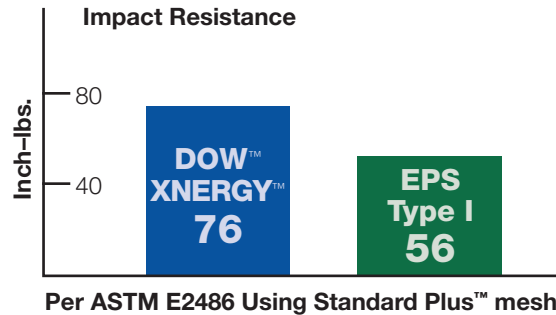
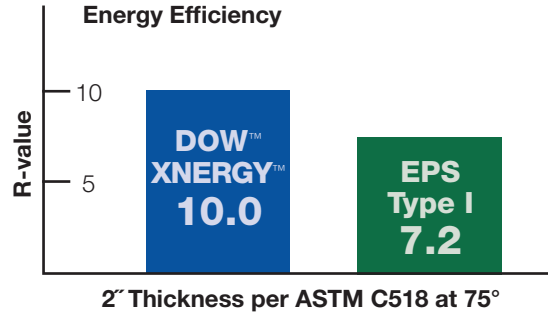
DOW™ XNERGY™ rigid insulation is an integral component of the Outsulation X system. It provides a continuous layer of insulation, eliminates thermal breaks and moderates the temperature of the wall cavity, reducing the potential for dew point condensation.

DOW™ XNERGY™ provides long-term thermal performance, maximizing energy efficiency, moisture resistance and durability and is backed by a 50-year limited thermal warranty. DOW™ XNERGY™ is manufactured with foaming agent technology that has zero-ozone depletion potential.

DOW™ XNERGY™ insulation truly is the 'X Factor' in Outsulation X!



Building Solutions



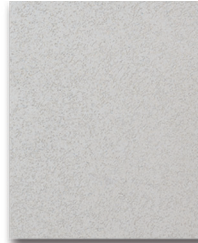
High Performance Finish Options

Dryvit offers a wide variety of finishes, textures and colors that provide a dramatic architectural curb appeal for any project. The range of durable aesthetic options includes stucco, brick, limestone, granite, and even metal.

Using the latest in acrylic copolymer, UV resistant, lightweight, anti-microbial, and hydrophobic chemistry – a Dryvit finish can meet virtually any aesthetic, specification, performance and environmental requirement.



Custom Brick™



Limestone™



TerraNeo®



E™ Finish



StratoTone™



Sandpebble®



HDP™



Reflectit™

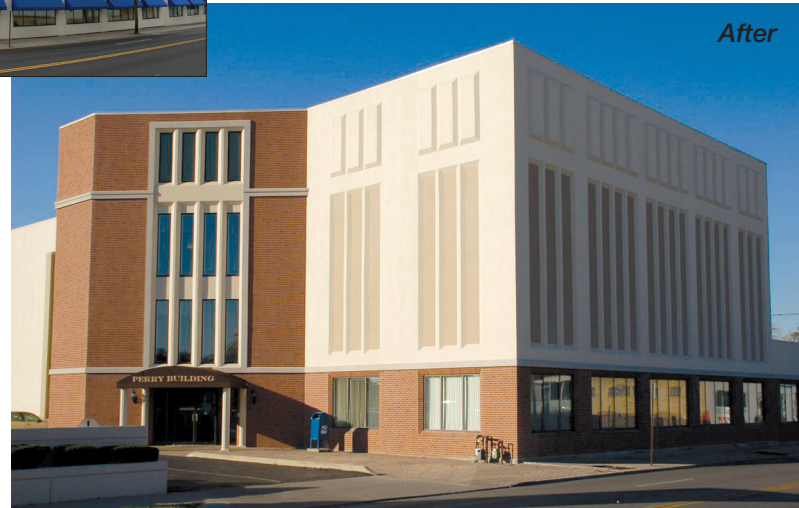
DryvitCARE... Ideal for Restoration



Restoration (rĕs'ta-rā'shen) – DryvitCARE for Outsulation Systems or other EIFS

An added feature of the Outsulation X System is the ease with which it can be routinely maintained or restored. The DryvitCARE program prescribes what can be done in either case to renew the original Dryvit system warranty, or even rebrand an existing building with a completely new look – with little or no waste and disposal costs. With DryvitCARE, a Dryvit Outsulation X System can realistically perform as intended for the lifetime of your building!

This 17-year old office building was restored and given a modern look, and its original warranty renewed!



**Perry Corporation
Lima, OH**

... or Renovation

Renovation (rĕn'ō-vā'shen) – DryvitCARE for other claddings

All types of exteriors require periodic maintenance, which can be costly. In addition, many older buildings were poorly insulated when they were constructed. When the time comes to renovate an old brick or stucco building, that can be the perfect time to consider doing so with a Dryvit Outsulation X System – which upgrades not only the appearance, but adds continuous exterior insulation at the same time. The original design of the project can be maintained or changed at the owner's discretion.

This luxury car dealer turned a dilapidated brick building into a sparkling new, more energy efficient showroom by adding a Dryvit System with Custom Brick™ finish to the existing exterior – with minimal waste and disposal costs. Now that's sustainable!



Isringhausen Car Dealership
Springfield, IL

Sample Testing Results

TEST	TEST METHOD	CRITERIA	RESULTS
Air Leakage	ASTM E 283	No Criteria	0.6 l/min/m ² (0.002 cfm/ft ²)
Drainage Efficiency ICC ES (AC 235)	ASTM E 2273	Minimum Drainage Efficiency of 90%	Passed
Accelerated Weathering	ASTM G 155 Cycle 1 ASTM G 154 Cycle 1 (QUV)	No deleterious effects after 2000 hours	No deleterious effects after 5000 hours No deleterious effects after 5000 hours
Water Penetration	ASTM E 331 ICC ES (AC 212)	No water penetration beyond the inner-most plane of the wall after 15 minutes at 137 Pa (2.86 psf)	Passed
Impact Resistance (formerly EIMA Std. 101.86)	ASTM E2486	No fracture of reinforcing mesh	Meets all requirements in each mesh category
Transverse Wind Load	ASTM E 330	Withstand positive and negative wind loads as specified by the building code	Minimum 5.6 kPa (116 psf) 16 inch o.c. framing, .5 in. sheathing screw attached at 152 mm (6 inch) o.c.
Ignitability	NFPA 268	No ignition at 12.5 kW/m ²	Passed
Intermediate Scale Multi-Story Fire Test	NFPA 285	<ol style="list-style-type: none"> 1. Resist flame propagation over the exterior surface 2. Resist vertical spread of flame within combustible core/component of panel from one story to the next 3. Resist vertical spread of flame over the interior surface from one story to the next 4. Resist lateral spread of flame from the compartment of fire origin to adjacent spaces 	Passed
Flame Spread	ASTM E 84	NFPA Class A Flame Spread≤25 Smoke Developed≤450	Passed

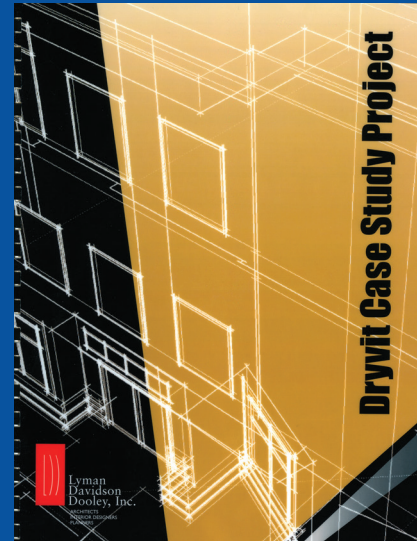
For full results, go to www.dryvit.com

What it all means – Building SUSTAINABLY can actually cost less!

Using a lightweight and energy efficient Outsulation X system can reduce the project requirement for concrete, structural steel, and HVAC – as well as shortening the overall construction schedule.*

Combine these savings in initial cost with the energy savings accumulated over the lifetime of the building and a smaller environmental footprint, and you have a truly sustainable, high performance cladding system.

For more information on Dryvit Outsulation Systems, call 1-800-556-7752 or visit us on the web at www.dryvit.com.



*go to http://www.dryvit.com/case_study_project.pdf to read the entire story.



Douglas County Jail
Lawrence, KS



Royal Palm Office Building
Plantation, FL



San Marcos Mall
San Marcos, TX



Belmont University
Nashville, TN



Dryvit Systems, Inc.
One Energy Way
West Warwick, RI 02893
800-556-7752 401-822-4100

www.dryvit.com

© Dryvit Systems, Inc., 2020
Printed in U.S.A. 6-13-5M

Dryvit Systems, Inc and Tremco are a part of Tremco Construction Products Group.

Information contained in this brochure conforms to the standard detail recommendations and specifications for the installation of Dryvit Systems, Inc. products as of the date of the publication of this document and is presented in good faith. Dryvit Systems, Inc. assumes no liability, expressed or implied, as to the architecture, engineering or workmanship of any project. To ensure that you are using the latest, most complete information, contact Dryvit Systems, Inc.

USG  **TREMCO**
SECUROCK® EXOAIR® 430

 **Dryvit™**