

Fedderlite® M Panel System



Prefabricated, Lightweight, Outsulation®
Exterior Wall Panels with Integrated Reinforcing Channels

DS949
Patent Pending

Fedderlite® M Panel System Installation Details

Table of Contents

Detail

FEDDERLITE M CHANNEL AND MOUNTING RAIL	FLM 1
STANDARD FEDDERLITE CHANNEL AND MOUNTING PLATE	FLM 2
PANEL SYSTEM	FLM 3
PANEL SYSTEM - HIGH IMPACT OPTION	FLM 4
BACK VIEW STEP 1 - CHANNEL PLACEMENT	FLM 5
BACK VIEW STEP 2 - REINFORCING MESH AND BASE COAT APPLICATION	FLM 6
BACK VIEW STEP 3 - FINISHED PANEL WITH MOUNTING PLATE OR TREMGrip	FLM 7
PANEL VERTICAL JOINT	FLM 8
HORIZONTAL SHIPLAP JOINT WITH DRAINAGE	FLM 9
HORIZONTAL JOINT WITH DRAINAGE	FLM 10
HORIZONTAL SHIPLAP JOINT	FLM 11
HORIZONTAL JOINT	FLM 12
PARAPET	FLM 13
FOUNDATION AT GRADE - FLUSH SUBSTRATE	FLM 14
FOUNDATION AT GRADE - RECESSED SUBSTRATE	FLM 15
HEAD	FLM 16
JAMB	FLM 17
SILL	FLM 18
TRANSITION AT FASCIA/SOFFIT INTERSECTION - INSULATED	FLM 19
TRANSITION AT FASCIA/SOFFIT	FLM 20
TYPICAL AESTHETIC REVEALS	FLM 21
TERMINATION AT DISSIMILAR MATERIALS	FLM 22
INSIDE CORNER JOINT	FLM 23
OUTSIDE CORNER JOINT	FLM 24
INSIDE CORNER PANEL	FLM 25
OUTSIDE CORNER PANEL	FLM 26
FACE FASTENING TO SOLID SUBSTRATE	FLM 27
PENETRATION	FLM 28

NOTE:

DRYVIT MAKES NO REPRESENTATION REGARDING CONFORMITY OF ITS SUGGESTIONS TO MODEL BUILDING CODES, ENGINEERING CRITERIA, SPECIFIC APPLICATIONS, OR PROJECT LOCATIONS. ALL COMPONENTS INDICATED IN ILLUSTRATIONS, AS WELL AS OTHERS THAT MAY BE REQUIRED FOR THE INTEGRITY OF THE SYSTEM SHALL BE DESIGNED, DETAILED, AND ENGINEERED BY REPRESENTATIVES OF THE ARCHITECT, OWNER, OR CONTRACTOR TO BE IN CONFORMANCE WITH MODEL CODES, ARCHITECTURAL, AND ENGINEERING REQUIREMENTS PERTAINING TO SPECIFIC BUILDING PROJECTS.

DRYVIT MAKES NO WARRANTY, EXPRESSED OR IMPLIED, AS TO THE ARCHITECTURAL DESIGN, ENGINEERING, OR WORKMANSHIP OF PROJECTS UTILIZING DRYVIT SYSTEMS OR PRODUCTS.

THE LIABILITIES OF DRYVIT SHALL BE AS STATED IN THE DRYVIT STANDARD WARRANTY. CONTACT DRYVIT FOR A FULL AND COMPLETE COPY OF THE WARRANTY.

The architecture, engineering, and design of the project using the Dryvit products are the responsibility of the project's design professional. All products and systems must comply with local building codes and standards. This detail is for general information and guidance only and Dryvit specifically disclaims any liability for the use of this detail. The project design professional determines, in its sole discretion, whether this detail or a functionally equivalent detail is best suited for the project. This detail is subject to change without notice. Contact Dryvit to ensure you have the most recent version.

Fedderlite® M Panel System



Dryvit Technical Support: 800-556-7752

Detail: Fedderlite® M Panel System Installation Details

Drawn by: KAB Checked by: SM Scale: NTS Date: 10/2/2023

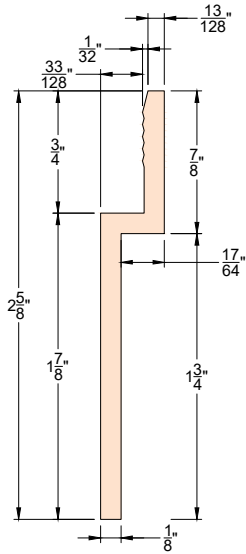
www.tremcocpg.com

File Name:

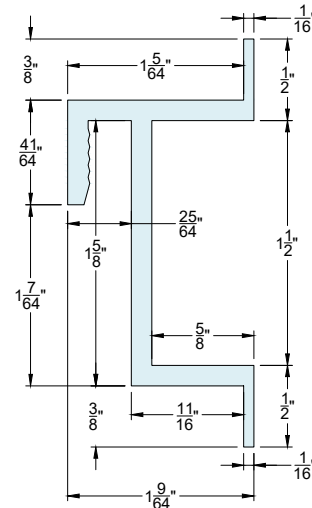
Table of Contents



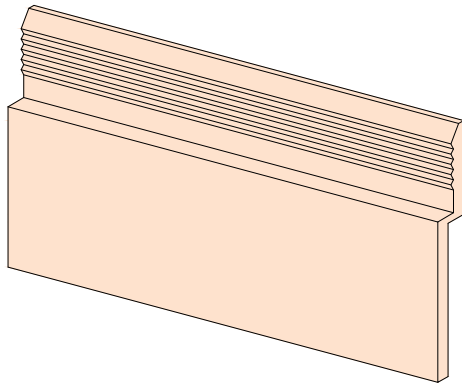
Construction Products Group



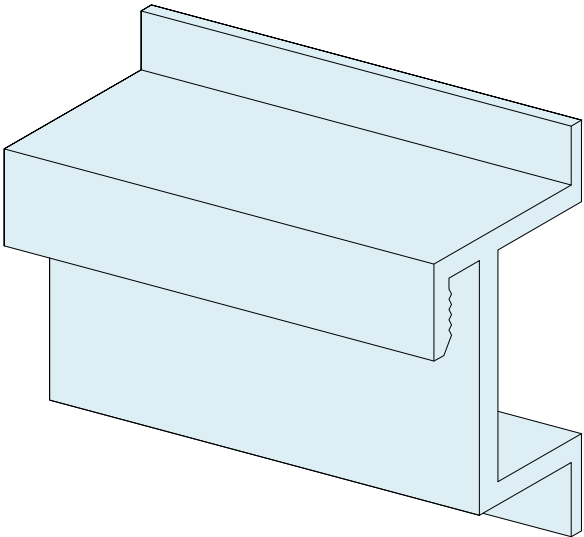
FEDDERLITE M MOUNTING RAIL
SECTION VIEW



FEDDERLITE M CHANNEL
SECTION VIEW



FEDDERLITE M MOUNTING RAIL
ISOMETRIC VIEW





FEDDERLITE M CHANNEL
ISOMETRIC VIEW

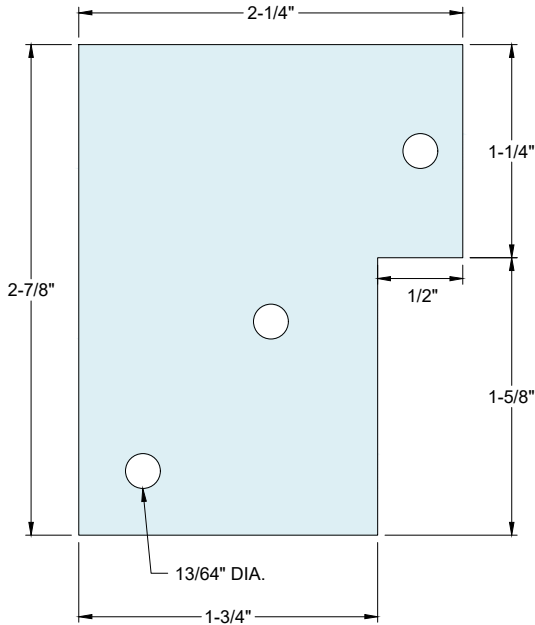
NOTES:

1. STRUCTURAL ELEMENTS PER DESIGN ENGINEER.
2. FASTENER DESIGN PER APPROVED ENGINEERED SHOP DRAWINGS.

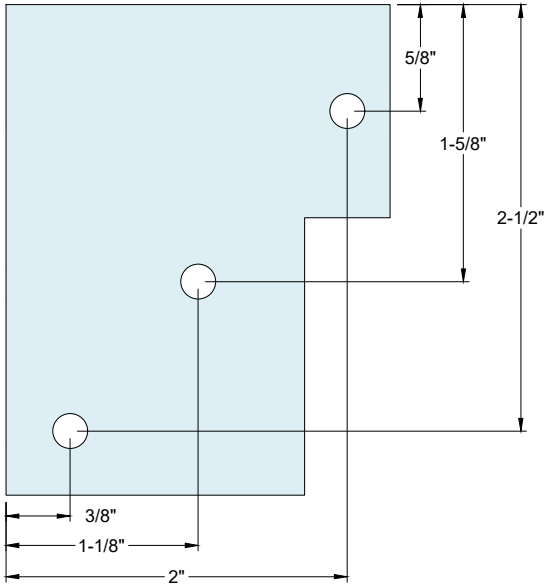
The architecture, engineering, and design of the project using the Dryvit products are the responsibility of the project's design professional. All products and systems must comply with local building codes and standards. This detail is for general information and guidance only and Dryvit specifically disclaims any liability for the use of this detail. The project design professional determines, in its sole discretion, whether this detail or a functionally equivalent detail is best suited for the project. This detail is subject to change without notice. Contact Dryvit to ensure you have the most recent version.

Fedderlite® M Panel System

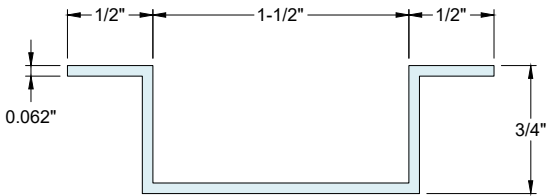
 Dryvit Technical Support: 800-556-7752	Detail: Fedderlite M Channel and Mounting Rail				File Name:	 <i>Construction Products Group</i>
	Drawn by: KAB	Checked by: SM	Scale: NTS	Date: 10/2/2023	FLM 1	
	www.tremcocpg.com					



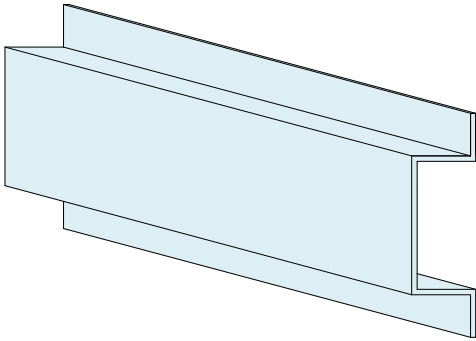
STANDARD FEDDERLITE MOUNTING PLATES PLAN VIEW



STANDARD FEDDERLITE MOUNTING PLATES PLAN VIEW



STANDARD FEDDERLITE ALUMINUM EXTRUSION SECTION VIEW





STANDARD FEDDERLITE ALUMINUM EXTRUSION ISOMETRIC VIEW

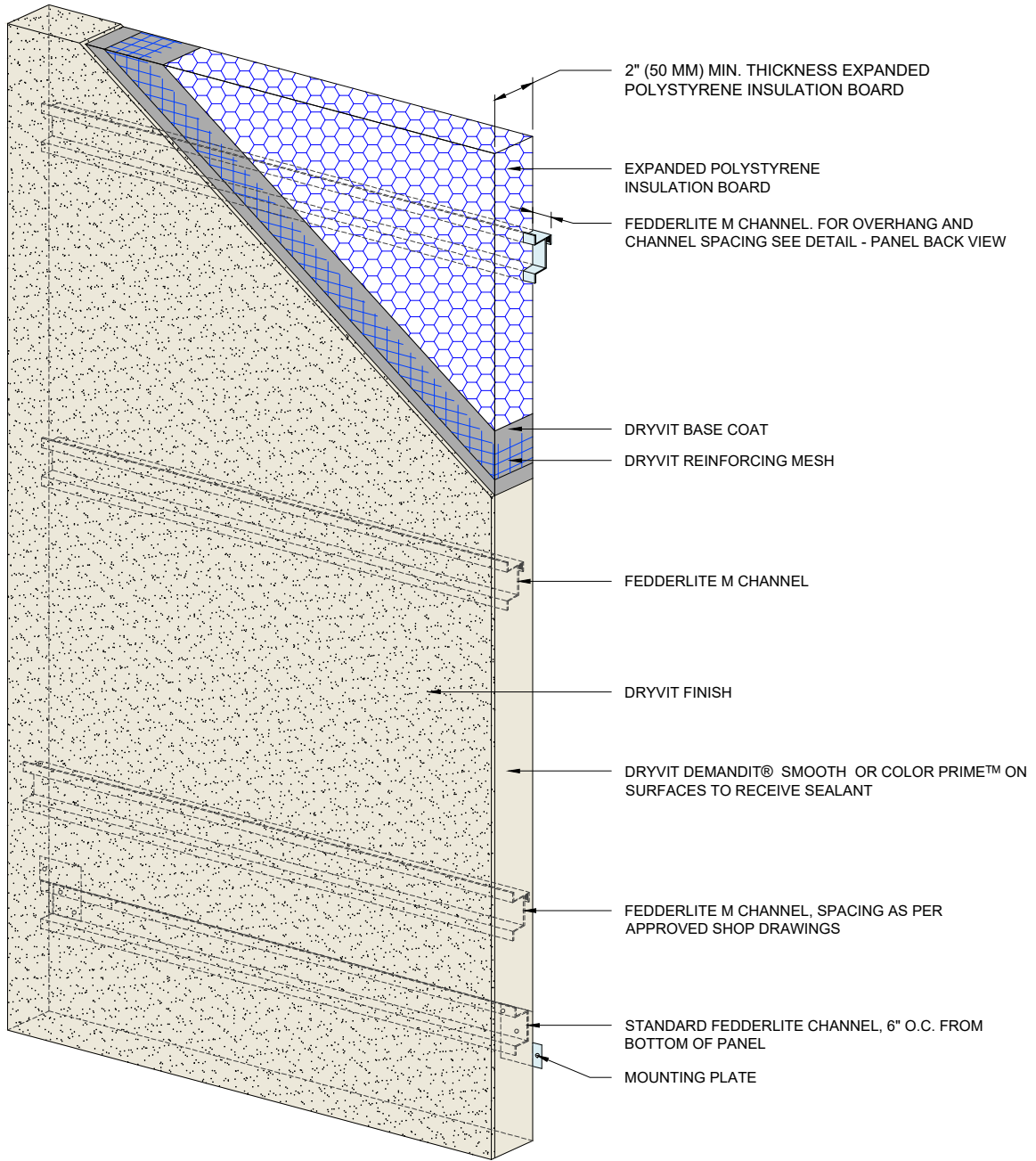
NOTES:

1. STRUCTURAL ELEMENTS PER DESIGN ENGINEER.
2. FASTENER DESIGN PER APPROVED ENGINEERED SHOP DRAWINGS.

The architecture, engineering, and design of the project using the Dryvit products are the responsibility of the project's design professional. All products and systems must comply with local building codes and standards. This detail is for general information and guidance only and Dryvit specifically disclaims any liability for the use of this detail. The project design professional determines, in its sole discretion, whether this detail or a functionally equivalent detail is best suited for the project. This detail is subject to change without notice. Contact Dryvit to ensure you have the most recent version.

Fedderlite® M Panel System

 Dryvit Technical Support: 800-556-7752	Detail: Standard Fedderlite Channel and Mounting Plate				File Name: FLM 2	 Construction Products Group
	Drawn by: KAB	Checked by: SM	Scale: NTS	Date: 10/2/2023		
	www.tremcocpg.com					





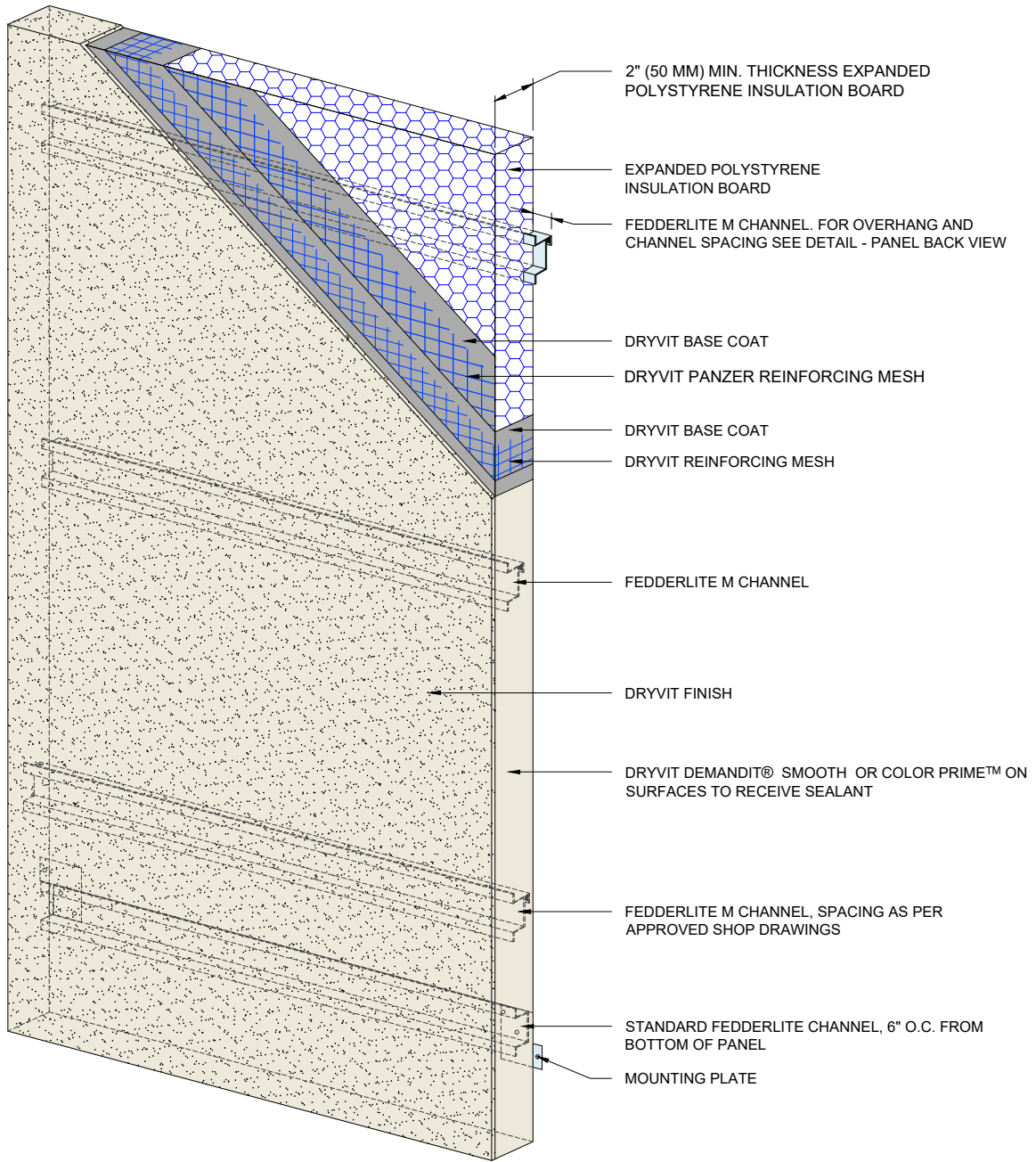
NOTES:

1. DRYVIT RECOMMENDS THAT GROUND FLOOR APPLICATIONS AND ALL FACADES EXPOSED TO ABNORMAL STRESS, HIGH TRAFFIC, OR DELIBERATE IMPACT HAVE THE BASE COAT REINFORCED WITH PANZER® MESH PRIOR TO STANDARD OR STANDARD PLUS MESH. LOCATION OF HIGH IMPACT ZONES SHOULD BE INDICATED ON CONTRACT DRAWINGS.
2. STRUCTURAL ELEMENTS PER DESIGN ENGINEER.
3. REFER TO DRYVIT PUBLICATION DS840 FOR AWRB AND FLASHING APPLICATION.
4. FASTENER DESIGN PER APPROVED ENGINEERED SHOP DRAWINGS.

The architecture, engineering, and design of the project using the Dryvit products are the responsibility of the project's design professional. All products and systems must comply with local building codes and standards. This detail is for general information and guidance only and Dryvit specifically disclaims any liability for the use of this detail. The project design professional determines, in its sole discretion, whether this detail or a functionally equivalent detail is best suited for the project. This detail is subject to change without notice. Contact Dryvit to ensure you have the most recent version.

Fedderlite® M Panel System

 Dryvit Technical Support: 800-556-7752	Detail: Panel System				File Name:		 Construction Products Group
	Drawn by: KAB	Checked by: SM	Scale: NTS	Date: 10/2/2023	FLM 3		
	www.tremcocpg.com						



NOTES:

1. DRYVIT RECOMMENDS THAT GROUND FLOOR APPLICATIONS AND ALL FACADES EXPOSED TO ABNORMAL STRESS, HIGH TRAFFIC, OR DELIBERATE IMPACT HAVE THE BASE COAT REINFORCED WITH PANZER® MESH PRIOR TO STANDARD OR STANDARD PLUS MESH. LOCATION OF HIGH IMPACT ZONES SHOULD BE INDICATED ON CONTRACT DRAWINGS.
2. STRUCTURAL ELEMENTS PER DESIGN ENGINEER.
3. REFER TO DRYVIT PUBLICATION DS840 FOR AWRB AND FLASHING APPLICATION.
4. FASTENER DESIGN PER APPROVED ENGINEERED SHOP DRAWINGS.

The architecture, engineering, and design of the project using the Dryvit products are the responsibility of the project's design professional. All products and systems must comply with local building codes and standards. This detail is for general information and guidance only and Dryvit specifically disclaims any liability for the use of this detail. The project design professional determines, in its sole discretion, whether this detail or a functionally equivalent detail is best suited for the project. This detail is subject to change without notice. Contact Dryvit to ensure you have the most recent version.

Fedderlite® M Panel System



Detail: Panel - High Impact Option

Drawn by: KAB

Checked by: SM

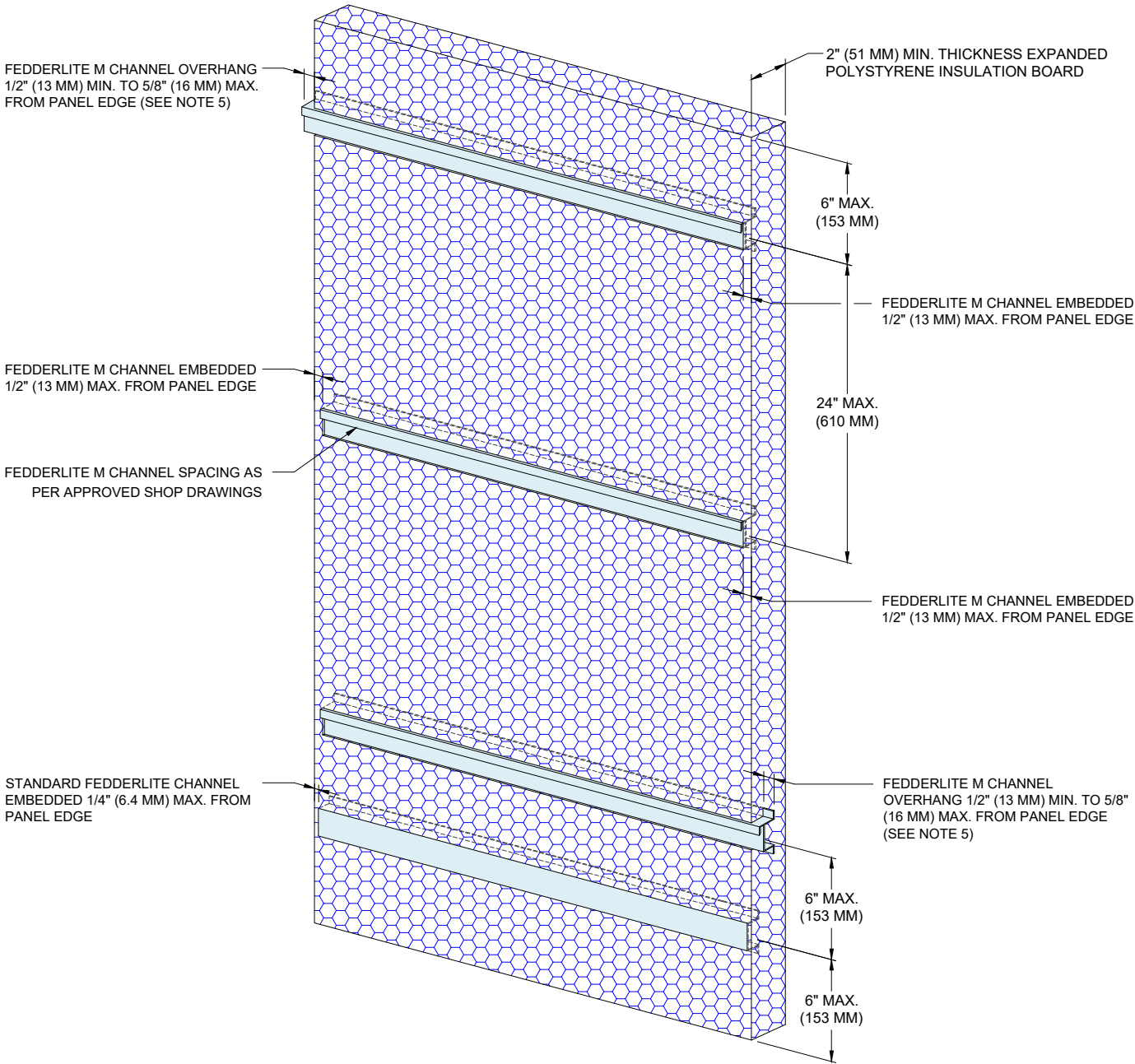
Scale: NTS

Date: 10/2/2023

File Name:

FLM 4







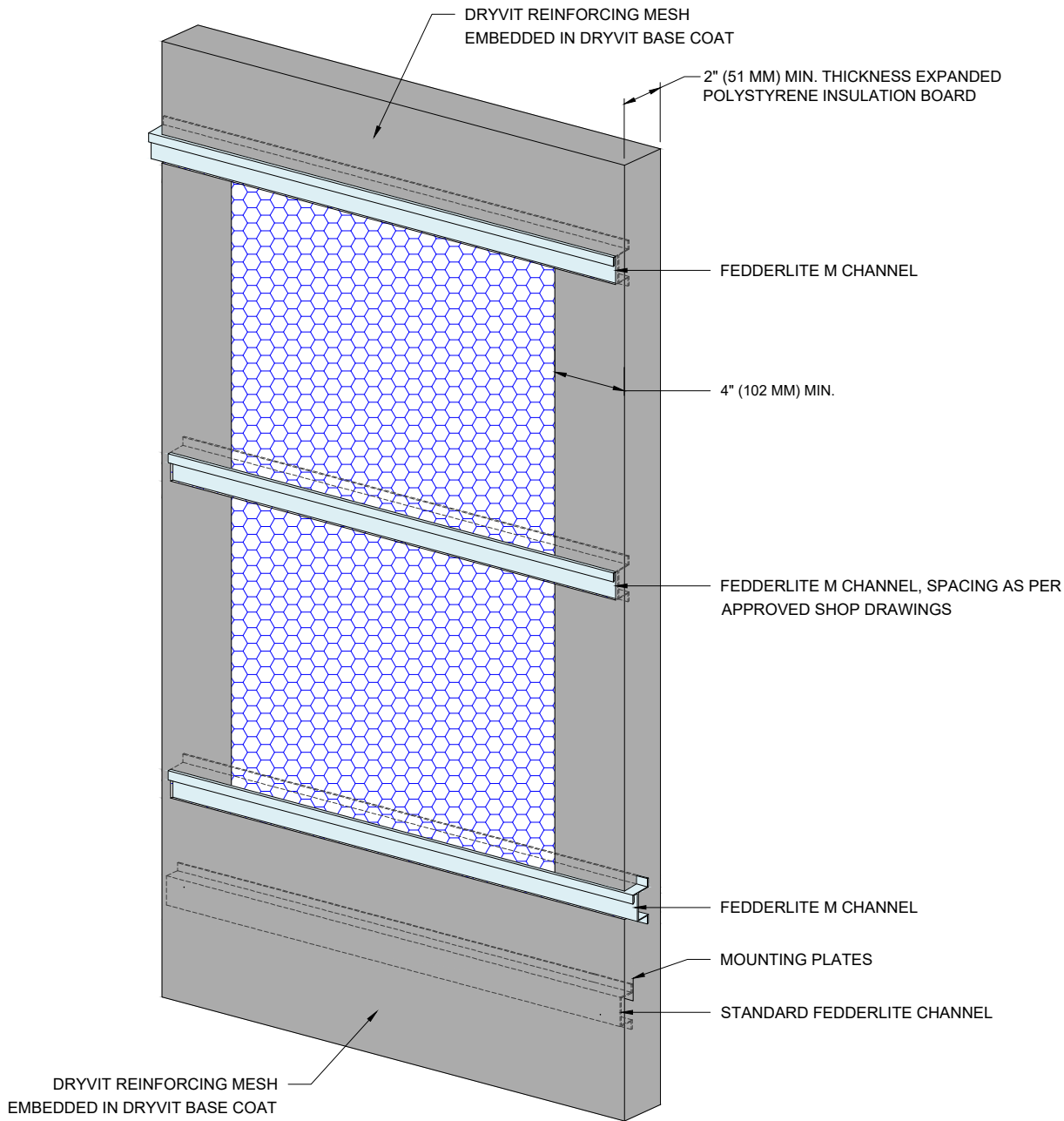
NOTES:

1. DRYVIT RECOMMENDS THAT GROUND FLOOR APPLICATIONS AND ALL FACADES EXPOSED TO ABNORMAL STRESS, HIGH TRAFFIC, OR DELIBERATE IMPACT HAVE THE BASE COAT REINFORCED WITH PANZER® MESH PRIOR TO STANDARD OR STANDARD PLUS MESH. LOCATION OF HIGH IMPACT ZONES SHOULD BE INDICATED ON CONTRACT DRAWINGS.
2. STRUCTURAL ELEMENTS PER DESIGN ENGINEER.
3. REFER TO DRYVIT PUBLICATION DS840 FOR AWRB AND FLASHING APPLICATION.
4. FASTENER DESIGN PER APPROVED ENGINEERED SHOP DRAWINGS.
5. FOR FACE FASTENING, ALLOW CHANNELS TO EXTEND PAST PANEL EDGES MINIMUM 1/2" (13MM) TO MAXIMUM 5/8" (16MM).

The architecture, engineering, and design of the project using the Dryvit products are the responsibility of the project's design professional. All products and systems must comply with local building codes and standards. This detail is for general information and guidance only and Dryvit specifically disclaims any liability for the use of this detail. The project design professional determines, in its sole discretion, whether this detail or a functionally equivalent detail is best suited for the project. This detail is subject to change without notice. Contact Dryvit to ensure you have the most recent version.

Fedderlite® M Panel System

 Dryvit Technical Support: 800-556-7752	Detail: Back View Step 1 - Channel Placement				File Name:	 <i>Construction Products Group</i>
	Drawn by: KAB	Checked by: SM	Scale: NTS	Date: 10/2/2023	FLM 5	
	www.tremcocpg.com					



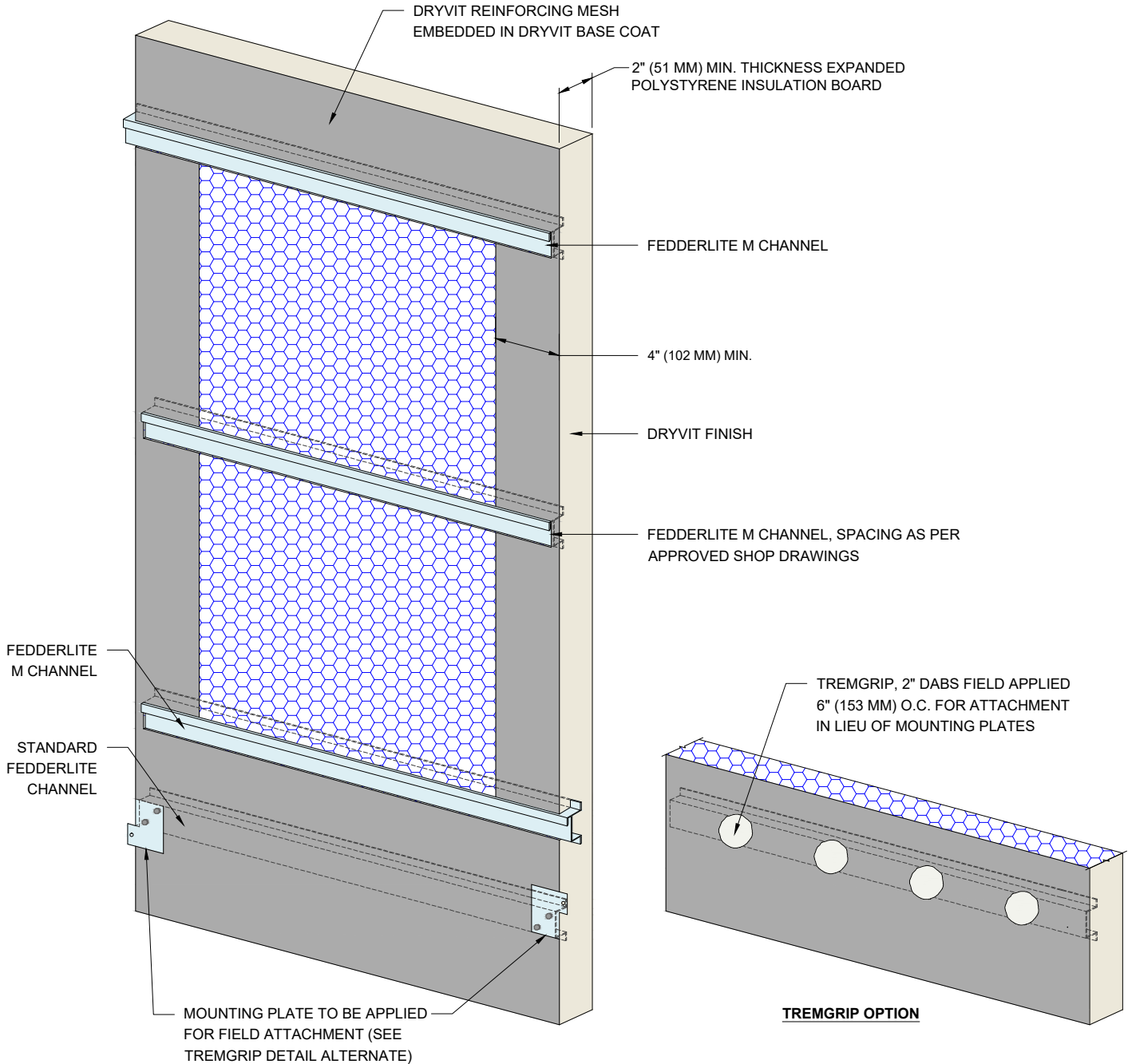
NOTES:

1. DRYVIT RECOMMENDS THAT GROUND FLOOR APPLICATIONS AND ALL FACADES EXPOSED TO ABNORMAL STRESS, HIGH TRAFFIC, OR DELIBERATE IMPACT HAVE THE BASE COAT REINFORCED WITH PANZER® MESH PRIOR TO STANDARD OR STANDARD PLUS MESH. LOCATION OF HIGH IMPACT ZONES SHOULD BE INDICATED ON CONTRACT DRAWINGS.
2. STRUCTURAL ELEMENTS PER DESIGN ENGINEER.
3. REFER TO DRYVIT PUBLICATION DS840 FOR AWRB AND FLASHING APPLICATION.
4. FASTENER DESIGN PER APPROVED ENGINEERED SHOP DRAWINGS.
5. FOR FACE FASTENING, ALLOW CHANNELS TO EXTEND PAST PANEL EDGES MINIMUM 1/2" (13MM) TO MAXIMUM 5/8" (16MM).

The architecture, engineering, and design of the project using the Dryvit products are the responsibility of the project's design professional. All products and systems must comply with local building codes and standards. This detail is for general information and guidance only and Dryvit specifically disclaims any liability for the use of this detail. The project design professional determines, in its sole discretion, whether this detail or a functionally equivalent detail is best suited for the project. This detail is subject to change without notice. Contact Dryvit to ensure you have the most recent version.

Fedderlite® M Panel System

 Dryvit Technical Support: 800-556-7752	Detail: Back View Step 2 - Reinforcing Mesh and Base Coat Application				File Name:	 <i>Construction Products Group</i>
	Drawn by: KAB	Checked by: SM	Scale: NTS	Date: 10/2/2023	FLM 6	
	www.tremcocpg.com					





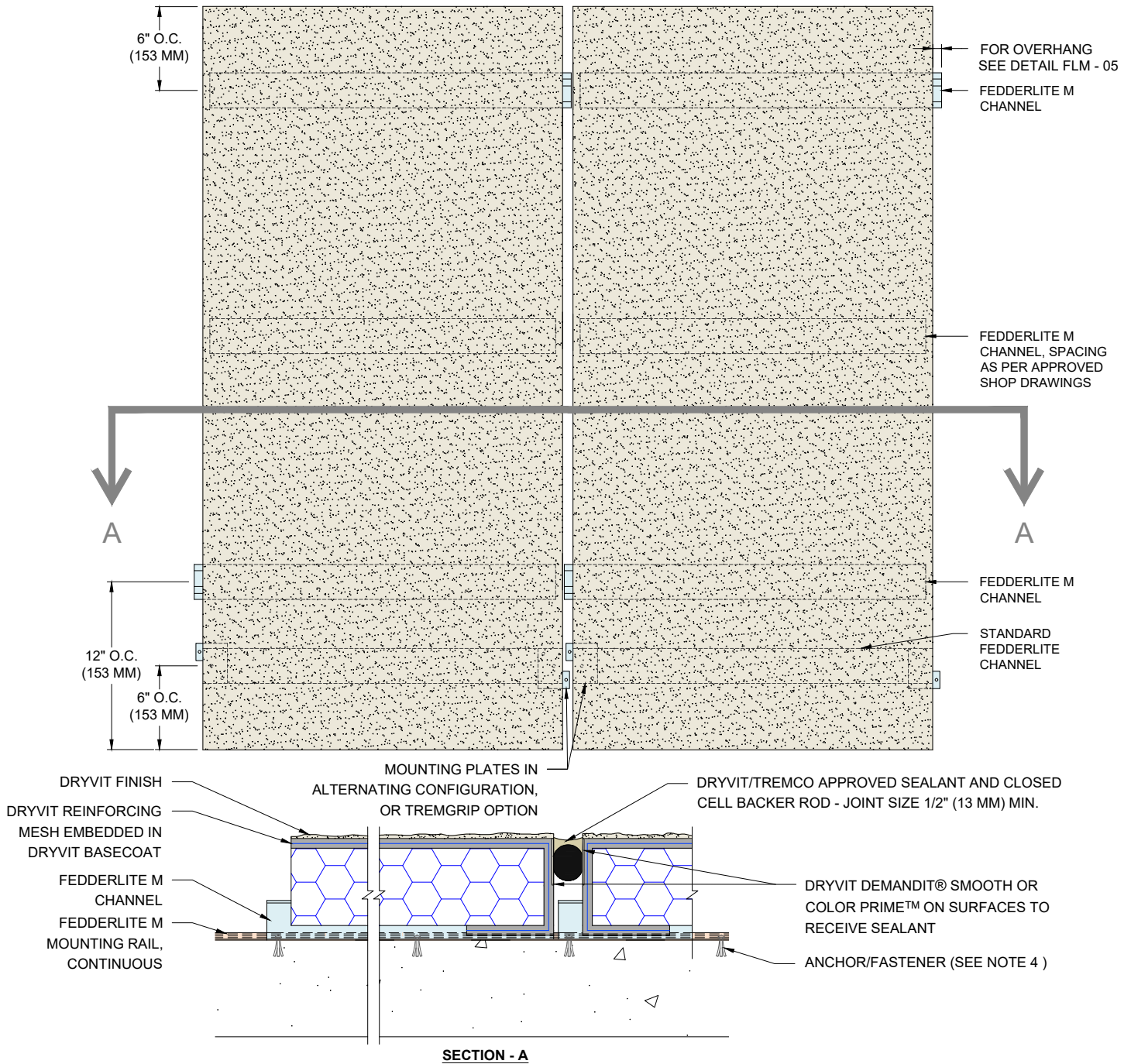
NOTES:

1. DRYVIT RECOMMENDS THAT GROUND FLOOR APPLICATIONS AND ALL FACADES EXPOSED TO ABNORMAL STRESS, HIGH TRAFFIC, OR DELIBERATE IMPACT HAVE THE BASE COAT REINFORCED WITH PANZER® MESH PRIOR TO STANDARD OR STANDARD PLUS MESH. LOCATION OF HIGH IMPACT ZONES SHOULD BE INDICATED ON CONTRACT DRAWINGS.
2. STRUCTURAL ELEMENTS PER DESIGN ENGINEER.
3. REFER TO DRYVIT PUBLICATION DS840 FOR AWRB AND FLASHING APPLICATION.
4. FASTENER DESIGN PER APPROVED ENGINEERED SHOP DRAWINGS.
5. FOR FACE FASTENING, ALLOW CHANNELS TO EXTEND PAST PANEL EDGES MINIMUM 1/2" (13MM) TO MAXIMUM 5/8" (16MM).

The architecture, engineering, and design of the project using the Dryvit products are the responsibility of the project's design professional. All products and systems must comply with local building codes and standards. This detail is for general information and guidance only and Dryvit specifically disclaims any liability for the use of this detail. The project design professional determines, in its sole discretion, whether this detail or a functionally equivalent detail is best suited for the project. This detail is subject to change without notice. Contact Dryvit to ensure you have the most recent version.

Fedderlite® M Panel System

 Dryvit Technical Support: 800-556-7752	Detail: Back View Step 3 - Finished Panel with Mounting Plate or TREMGrip				File Name: FLM 7	 Construction Products Group
	Drawn by: KAB	Checked by: SM	Scale: NTS	Date: 10/2/2023		
	www.tremcocpg.com					



NOTES:

1. DRYVIT RECOMMENDS THAT GROUND FLOOR APPLICATIONS AND ALL FACADES EXPOSED TO ABNORMAL STRESS, HIGH TRAFFIC, OR DELIBERATE IMPACT HAVE THE BASE COAT REINFORCED WITH PANZER® MESH PRIOR TO STANDARD OR STANDARD PLUS MESH. LOCATION OF HIGH IMPACT ZONES SHOULD BE INDICATED ON CONTRACT DRAWINGS.
2. STRUCTURAL ELEMENTS PER DESIGN ENGINEER.
3. REFER TO DRYVIT PUBLICATION DS840 FOR AWRB AND FLASHING APPLICATION.
4. FASTENER DESIGN PER APPROVED ENGINEERED SHOP DRAWINGS.
5. SHIMS TO BE USED FOR DRAINAGE AND TO CORRECT IRREGULARITIES IN THE WALL WHEN REQUIRED (REFER TO DETAIL FLM - 09).

The architecture, engineering, and design of the project using the Dryvit products are the responsibility of the project's design professional. All products and systems must comply with local building codes and standards. This detail is for general information and guidance only and Dryvit specifically disclaims any liability for the use of this detail. The project design professional determines, in its sole discretion, whether this detail or a functionally equivalent detail is best suited for the project. This detail is subject to change without notice. Contact Dryvit to ensure you have the most recent version.

Fedderlite® M Panel System



Dryvit Technical Support: 800-556-7752

Detail: Panel Vertical Joint

Drawn by: KAB

Checked by: SM

Scale: NTS

Date: 10/2/2023

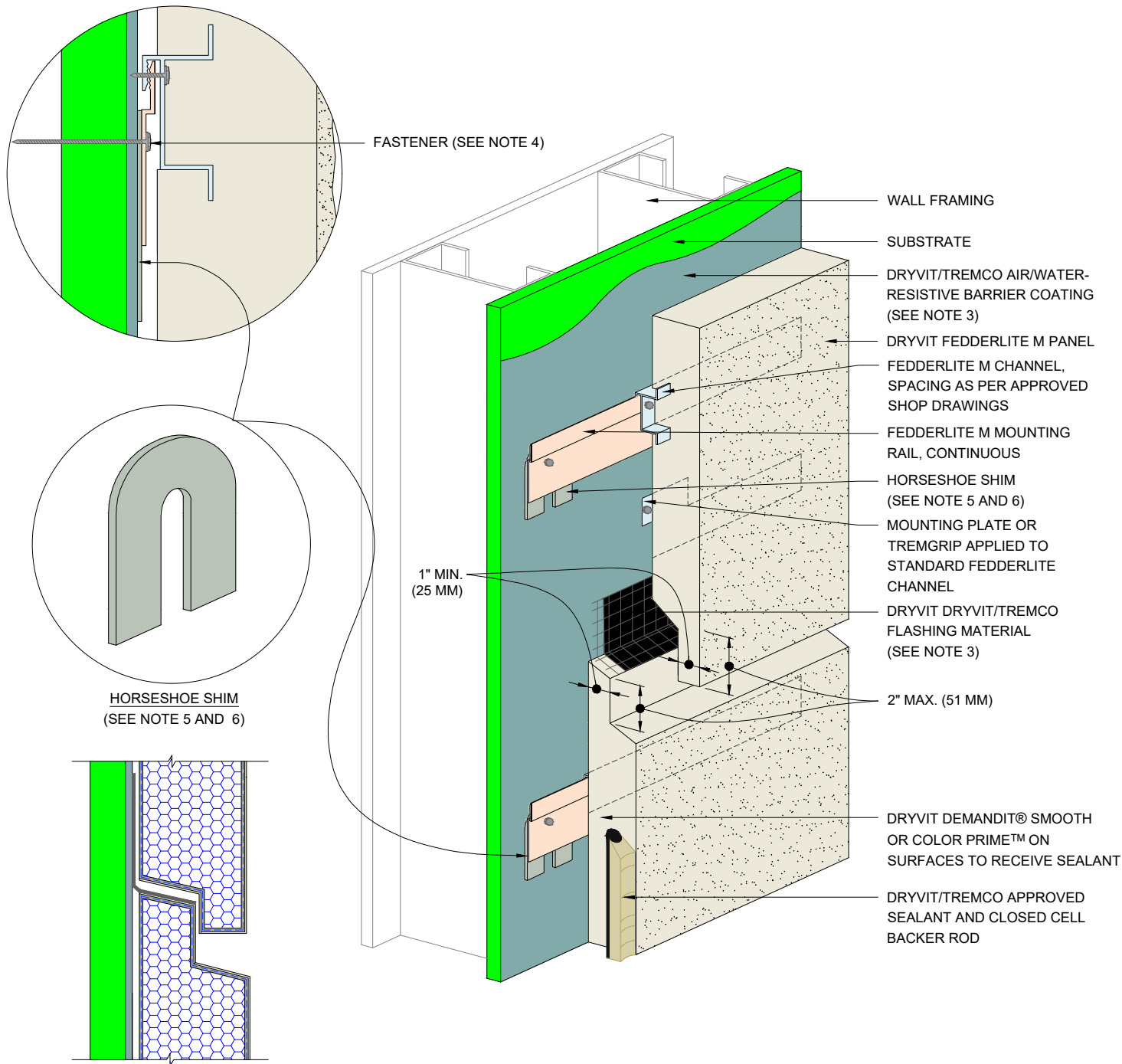
File Name:

FLM 8



Construction Products Group

www.tremcocpg.com



NOTES:

1. DRYVIT RECOMMENDS THAT GROUND FLOOR APPLICATIONS AND ALL FACADES EXPOSED TO ABNORMAL STRESS, HIGH TRAFFIC, OR DELIBERATE IMPACT HAVE THE BASE COAT REINFORCED WITH PANZER® MESH PRIOR TO STANDARD OR STANDARD PLUS MESH. LOCATION OF HIGH IMPACT ZONES SHOULD BE INDICATED ON CONTRACT DRAWINGS.
2. STRUCTURAL ELEMENTS PER DESIGN ENGINEER.
3. REFER TO DRYVIT PUBLICATION DS840 FOR AWRB AND FLASHING APPLICATION.
4. FASTENER DESIGN PER APPROVED ENGINEERED SHOP DRAWINGS.
5. SHIM THICKNESS TO BE 1/16" MIN. AT EACH ATTACHMENT RAIL FASTENER - REQUIRED FOR DRAINAGE. SHIM TO BE PLACED AT EACH MOUNTING RAIL FASTENER.
6. SHIMS TO BE USED FOR DRAINAGE AND TO CORRECT IRREGULARITIES IN THE WALL WHEN REQUIRED.

The architecture, engineering, and design of the project using the Dryvit products are the responsibility of the project's design professional. All products and systems must comply with local building codes and standards. This detail is for general information and guidance only and Dryvit specifically disclaims any liability for the use of this detail. The project design professional determines, in its sole discretion, whether this detail or a functionally equivalent detail is best suited for the project. This detail is subject to change without notice. Contact Dryvit to ensure you have the most recent version.

Fedderlite® M Panel System



Dryvit Technical Support: 800-556-7752

Detail: Horizontal Shiplap Joint with Drainage

Drawn by: KAB

Checked by: SM

Scale: NTS

Date: 10/2/2023

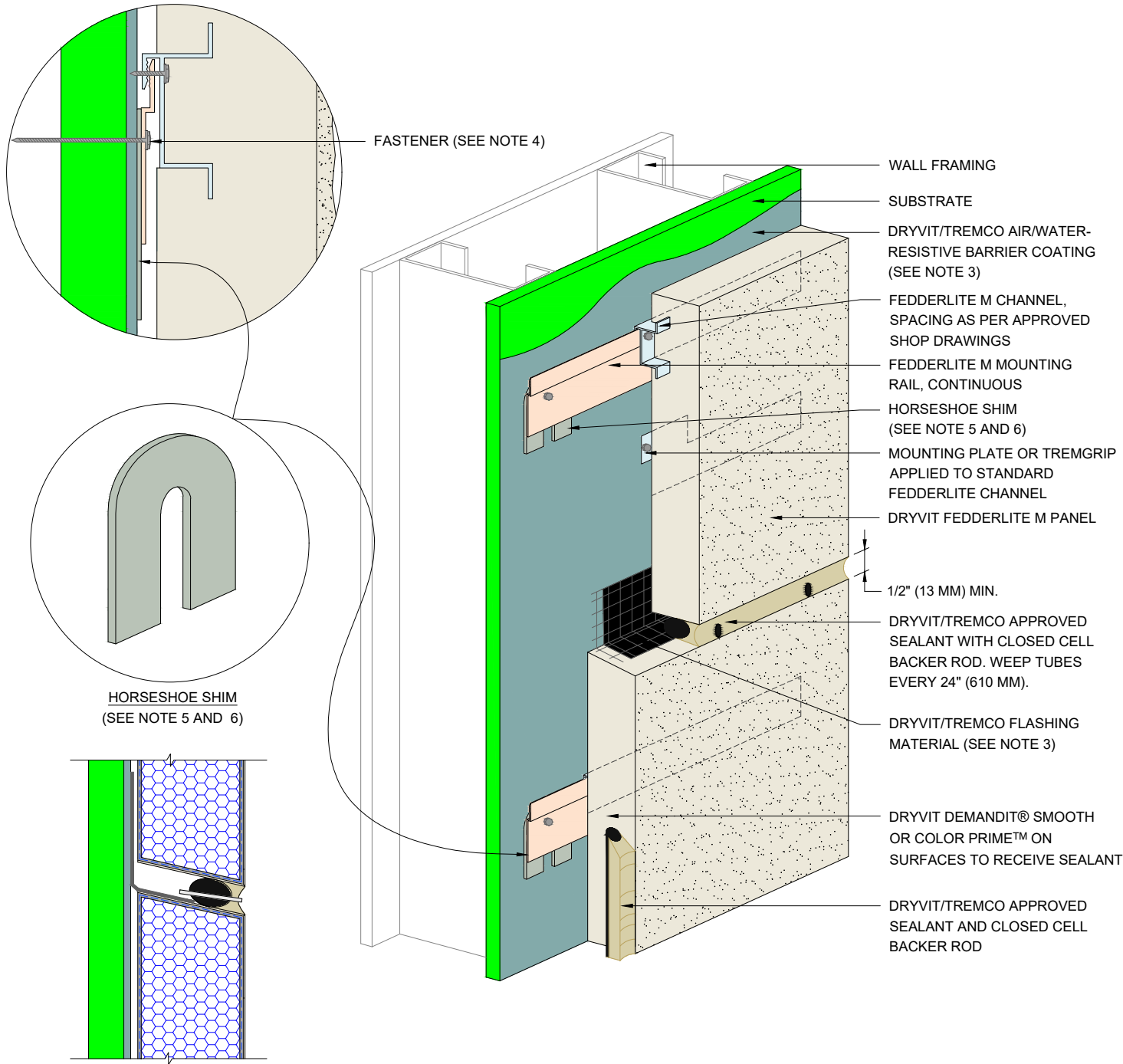
File Name:

FLM 9



Construction Products Group

www.tremcocpg.com




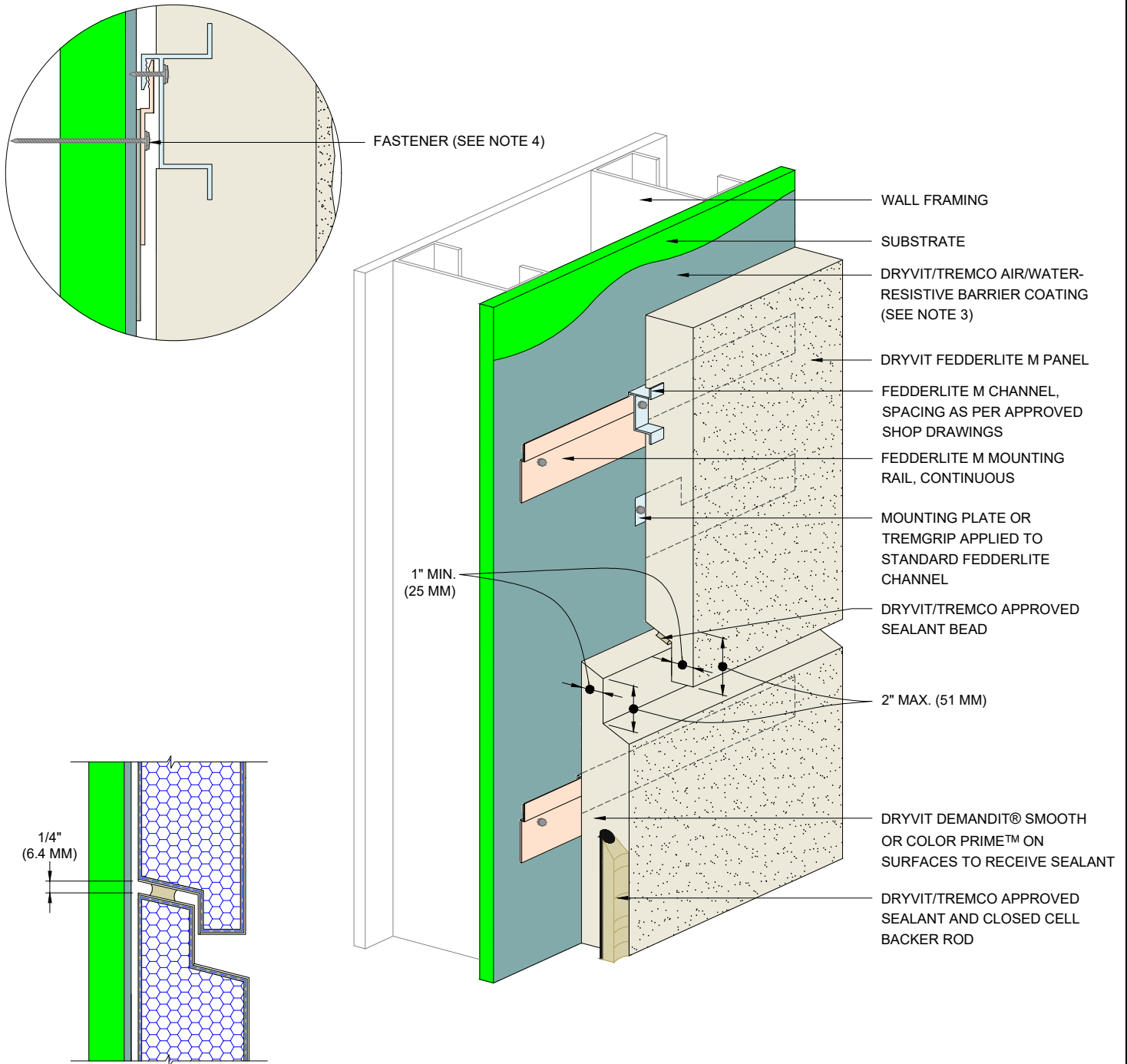
NOTES:

1. DRYVIT RECOMMENDS THAT GROUND FLOOR APPLICATIONS AND ALL FACADES EXPOSED TO ABNORMAL STRESS, HIGH TRAFFIC, OR DELIBERATE IMPACT HAVE THE BASE COAT REINFORCED WITH PANZER® MESH PRIOR TO STANDARD OR STANDARD PLUS MESH. LOCATION OF HIGH IMPACT ZONES SHOULD BE INDICATED ON CONTRACT DRAWINGS.
2. STRUCTURAL ELEMENTS PER DESIGN ENGINEER.
3. REFER TO DRYVIT PUBLICATION DS840 FOR AWRB AND FLASHING APPLICATION.
4. FASTENER DESIGN PER APPROVED ENGINEERED SHOP DRAWINGS.
5. SHIM THICKNESS TO BE 1/16" MIN. AT EACH ATTACHMENT RAIL FASTENER - REQUIRED FOR DRAINAGE. SHIM TO BE PLACED AT EACH MOUNTING RAIL FASTENER.
6. SHIMS TO BE USED FOR DRAINAGE AND TO CORRECT IRREGULARITIES IN THE WALL WHEN REQUIRED.

The architecture, engineering, and design of the project using the Dryvit products are the responsibility of the project's design professional. All products and systems must comply with local building codes and standards. This detail is for general information and guidance only and Dryvit specifically disclaims any liability for the use of this detail. The project design professional determines, in its sole discretion, whether this detail or a functionally equivalent detail is best suited for the project. This detail is subject to change without notice. Contact Dryvit to ensure you have the most recent version.

Fedderlite® M Panel System

 Dryvit Technical Support: 800-556-7752	Detail: Horizontal Joint with Drainage				File Name: FLM 10	 <i>Construction Products Group</i>
	Drawn by: KAB	Checked by: SM	Scale: NTS	Date: 10/2/2023		
	www.tremcocpg.com					



NOTES:

1. DRYVIT RECOMMENDS THAT GROUND FLOOR APPLICATIONS AND ALL FACADES EXPOSED TO ABNORMAL STRESS, HIGH TRAFFIC, OR DELIBERATE IMPACT HAVE THE BASE COAT REINFORCED WITH PANZER® MESH PRIOR TO STANDARD OR STANDARD PLUS MESH. LOCATION OF HIGH IMPACT ZONES SHOULD BE INDICATED ON CONTRACT DRAWINGS.
2. STRUCTURAL ELEMENTS PER DESIGN ENGINEER.
3. REFER TO DRYVIT PUBLICATION DS840 FOR AWRB AND FLASHING APPLICATION.
4. FASTENER DESIGN PER APPROVED ENGINEERED SHOP DRAWINGS.
5. SHIM THICKNESS TO BE 1/16" MIN. AT EACH ATTACHMENT RAIL FASTENER - REQUIRED FOR DRAINAGE. SHIM TO BE PLACED AT EACH MOUNTING RAIL FASTENER.
6. SHIMS TO BE USED FOR DRAINAGE AND TO CORRECT IRREGULARITIES IN THE WALL WHEN REQUIRED.

The architecture, engineering, and design of the project using the Dryvit products are the responsibility of the project's design professional. All products and systems must comply with local building codes and standards. This detail is for general information and guidance only and Dryvit specifically disclaims any liability for the use of this detail. The project design professional determines, in its sole discretion, whether this detail or a functionally equivalent detail is best suited for the project. This detail is subject to change without notice. Contact Dryvit to ensure you have the most recent version.

Fedderlite® M Panel System



Dryvit Technical Support: 800-556-7752

Detail: Horizontal Shiplap Joint

Drawn by: KAB

Checked by: SM

Scale: NTS

Date: 10/2/2023

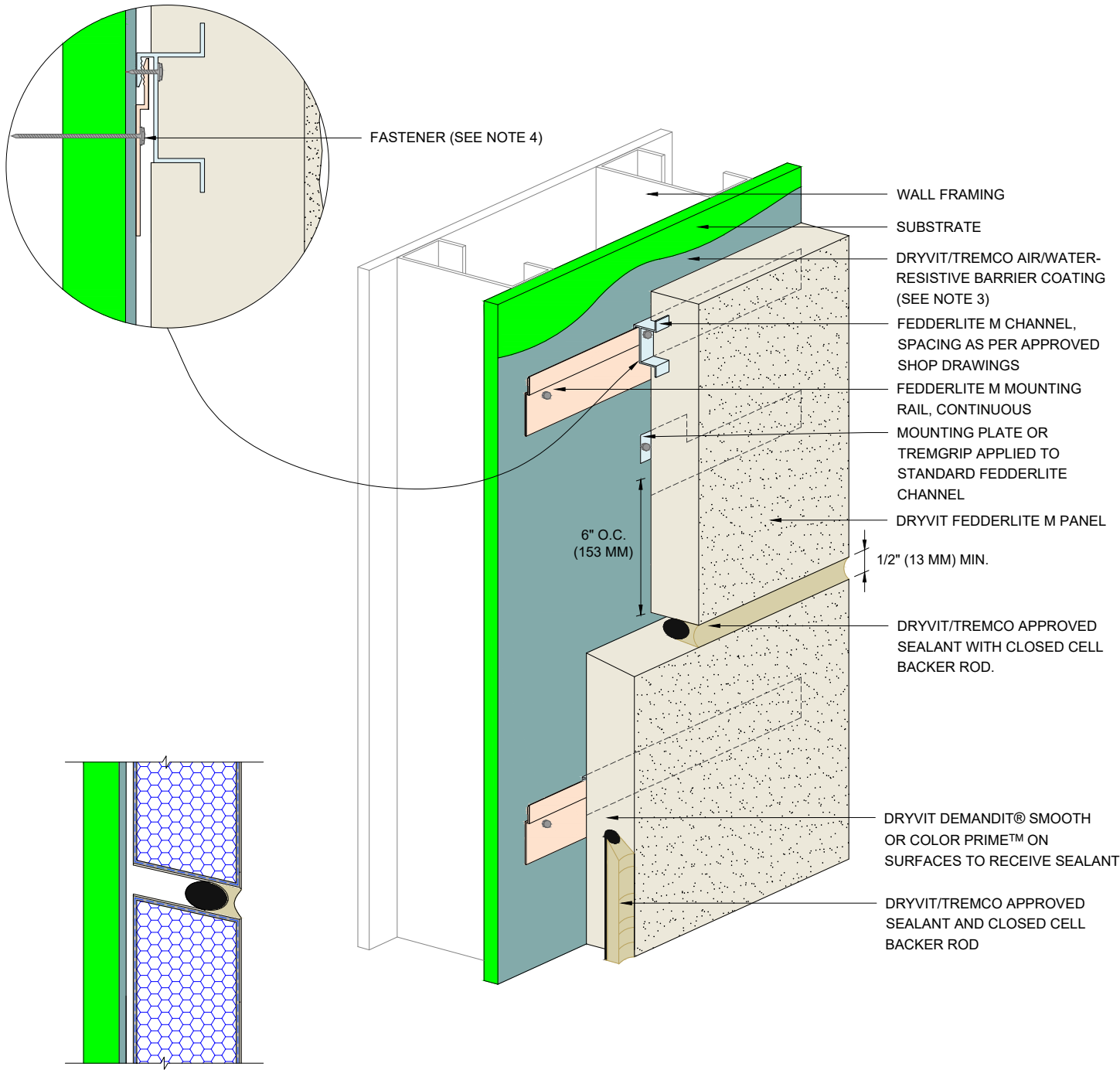
File Name:

FLM 11



Construction Products Group

www.tremcocpg.com



NOTES:

1. DRYVIT RECOMMENDS THAT GROUND FLOOR APPLICATIONS AND ALL FACADES EXPOSED TO ABNORMAL STRESS, HIGH TRAFFIC, OR DELIBERATE IMPACT HAVE THE BASE COAT REINFORCED WITH PANZER® MESH PRIOR TO STANDARD OR STANDARD PLUS MESH. LOCATION OF HIGH IMPACT ZONES SHOULD BE INDICATED ON CONTRACT DRAWINGS.
2. STRUCTURAL ELEMENTS PER DESIGN ENGINEER.
3. REFER TO DRYVIT PUBLICATION DS840 FOR AWRB AND FLASHING APPLICATION.
4. FASTENER DESIGN PER APPROVED ENGINEERED SHOP DRAWINGS.
5. SHIMS TO BE USED FOR DRAINAGE AND TO CORRECT IRREGULARITIES IN THE WALL WHEN REQUIRED (REFER TO DETAIL FLM - 09).

The architecture, engineering, and design of the project using the Dryvit products are the responsibility of the project's design professional. All products and systems must comply with local building codes and standards. This detail is for general information and guidance only and Dryvit specifically disclaims any liability for the use of this detail. The project design professional determines, in its sole discretion, whether this detail or a functionally equivalent detail is best suited for the project. This detail is subject to change without notice. Contact Dryvit to ensure you have the most recent version.

Fedderlite® M Panel System



Dryvit Technical Support: 800-556-7752

Detail: Horizontal Joint

Drawn by: KAB

Checked by: SM

Scale: NTS

Date: 10/2/2023

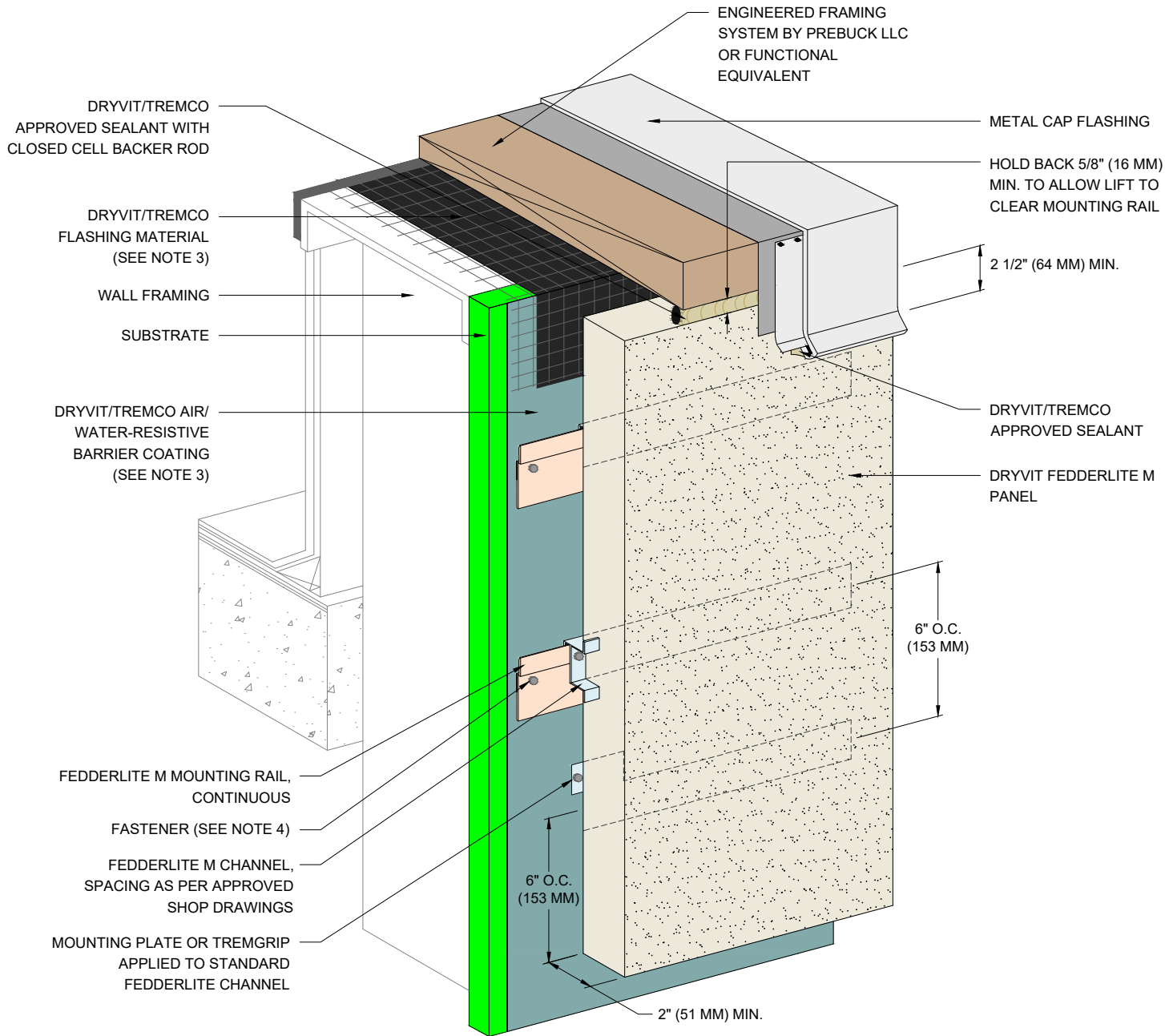
File Name:

FLM 12



Construction Products Group

www.tremcocpg.com



NOTES:

1. DRYVIT RECOMMENDS THAT GROUND FLOOR APPLICATIONS AND ALL FACADES EXPOSED TO ABNORMAL STRESS, HIGH TRAFFIC, OR DELIBERATE IMPACT HAVE THE BASE COAT REINFORCED WITH PANZER® MESH PRIOR TO STANDARD OR STANDARD PLUS MESH. LOCATION OF HIGH IMPACT ZONES SHOULD BE INDICATED ON CONTRACT DRAWINGS.
2. STRUCTURAL ELEMENTS PER DESIGN ENGINEER.
3. REFER TO DRYVIT PUBLICATION DS840 FOR AWRB AND FLASHING APPLICATION.
4. FASTENER DESIGN PER APPROVED ENGINEERED SHOP DRAWINGS.
5. SHIMS TO BE USED FOR DRAINAGE AND TO CORRECT IRREGULARITIES IN THE WALL WHEN REQUIRED (REFER TO DETAIL FLM - 09).

The architecture, engineering, and design of the project using the Dryvit products are the responsibility of the project's design professional. All products and systems must comply with local building codes and standards. This detail is for general information and guidance only and Dryvit specifically disclaims any liability for the use of this detail. The project design professional determines, in its sole discretion, whether this detail or a functionally equivalent detail is best suited for the project. This detail is subject to change without notice. Contact Dryvit to ensure you have the most recent version.

Fedderlite® M Panel System



Detail: Parapet

Drawn by: KAB

Checked by: SM

Scale: NTS

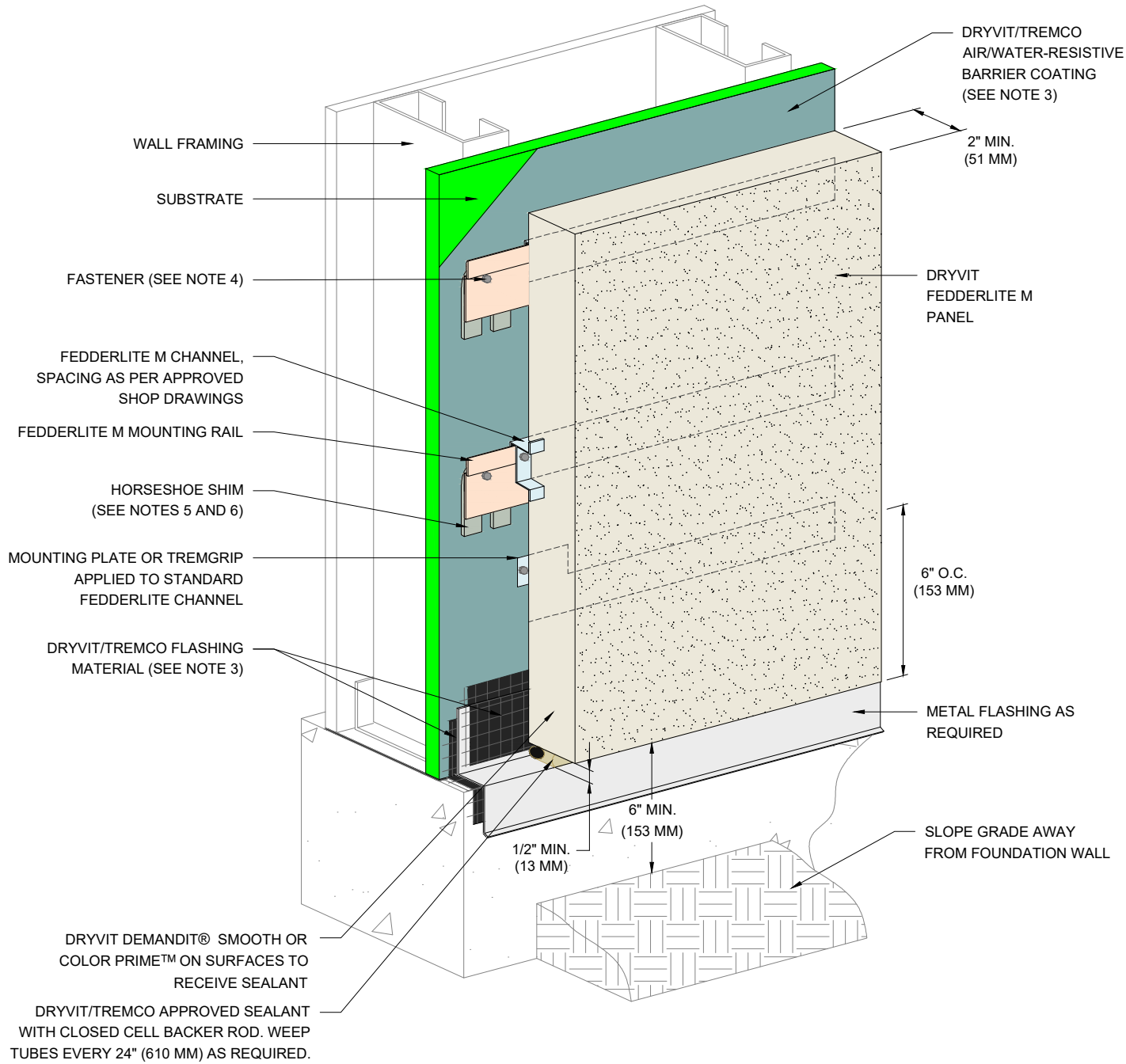
Date: 10/2/2023

File Name:

FLM 13



 Dryvit Technical Support: 800-556-7752	Detail: Foundation at Grade - Flush Substrate				File Name: <div>FLM 14</div>	 Construction Products Group
	Drawn by: KAB	Checked by: SM	Scale: NTS	Date: 10/2/2023		
	www.tremcocpg.com					



NOTES:

1. DRYVIT RECOMMENDS THAT GROUND FLOOR APPLICATIONS AND ALL FACADES EXPOSED TO ABNORMAL STRESS, HIGH TRAFFIC, OR DELIBERATE IMPACT HAVE THE BASE COAT REINFORCED WITH PANZER® MESH PRIOR TO STANDARD OR STANDARD PLUS MESH. LOCATION OF HIGH IMPACT ZONES SHOULD BE INDICATED ON CONTRACT DRAWINGS.
2. STRUCTURAL ELEMENTS PER DESIGN ENGINEER.
3. REFER TO DRYVIT PUBLICATION DS840 FOR AWRB AND FLASHING APPLICATION.
4. FASTENER DESIGN PER APPROVED ENGINEERED SHOP DRAWINGS.
5. SHIM THICKNESS TO BE 1/16\"
6. SHIMS TO BE USED FOR DRAINAGE AND TO CORRECT IRREGULARITIES IN THE WALL WHEN REQUIRED.

The architecture, engineering, and design of the project using the Dryvit products are the responsibility of the project's design professional. All products and systems must comply with local building codes and standards. This detail is for general information and guidance only and Dryvit specifically disclaims any liability for the use of this detail. The project design professional determines, in its sole discretion, whether this detail or a functionally equivalent detail is best suited for the project. This detail is subject to change without notice. Contact Dryvit to ensure you have the most recent version.

Fedderlite® M Panel System



Dryvit Technical Support: 800-556-7752

Detail: Foundation at Grade - Recessed Substrate

Drawn by: KAB

Checked by: SM

Scale: NTS

Date: 10/2/2023

File Name:

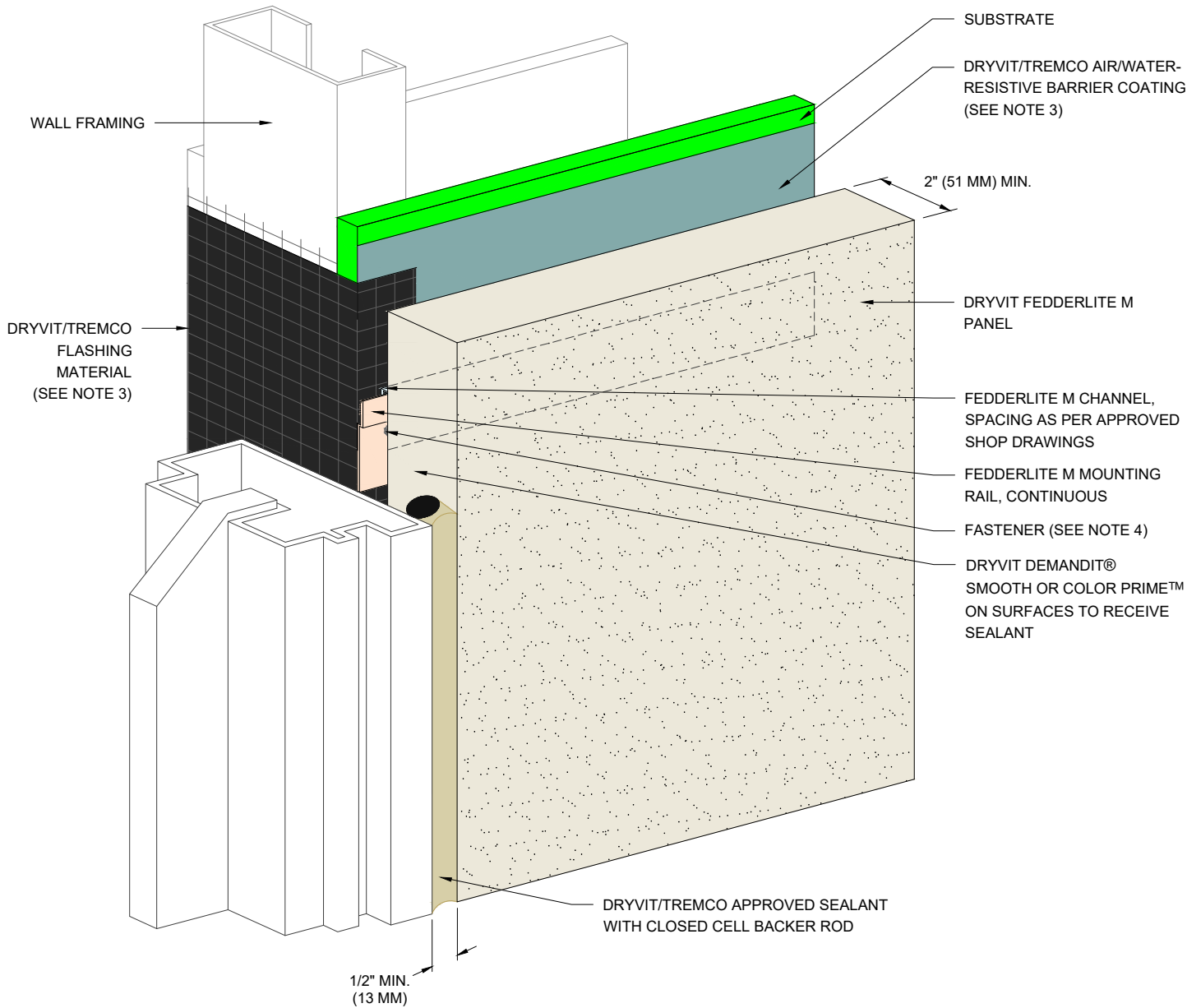
FLM 15



Construction Products Group

www.tremcocpg.com

 Dryvit Technical Support: 800-556-7752	Detail: Head				File Name:	 Construction Products Group
	Drawn by: KAB	Checked by: SM	Scale: NTS	Date: 10/2/2023	FLM 16	
	www.tremcocpg.com					



NOTES:

1. DRYVIT RECOMMENDS THAT GROUND FLOOR APPLICATIONS AND ALL FACADES EXPOSED TO ABNORMAL STRESS, HIGH TRAFFIC, OR DELIBERATE IMPACT HAVE THE BASE COAT REINFORCED WITH PANZER® MESH PRIOR TO STANDARD OR STANDARD PLUS MESH. LOCATION OF HIGH IMPACT ZONES SHOULD BE INDICATED ON CONTRACT DRAWINGS.
2. STRUCTURAL ELEMENTS PER DESIGN ENGINEER.
3. REFER TO DRYVIT PUBLICATION DS840 FOR AWRB AND FLASHING APPLICATION.
4. FASTENER DESIGN PER APPROVED ENGINEERED SHOP DRAWINGS.
5. SHIMS TO BE USED FOR DRAINAGE AND TO CORRECT IRREGULARITIES IN THE WALL WHEN REQUIRED (REFER TO DETAIL FLM - 09).

The architecture, engineering, and design of the project using the Dryvit products are the responsibility of the project's design professional. All products and systems must comply with local building codes and standards. This detail is for general information and guidance only and Dryvit specifically disclaims any liability for the use of this detail. The project design professional determines, in its sole discretion, whether this detail or a functionally equivalent detail is best suited for the project. This detail is subject to change without notice. Contact Dryvit to ensure you have the most recent version.

Fedderlite® M Panel System



Dryvit Technical Support: 800-556-7752

Detail: Jamb

Drawn by: KAB

Checked by: SM

Scale: NTS

Date: 10/2/2023

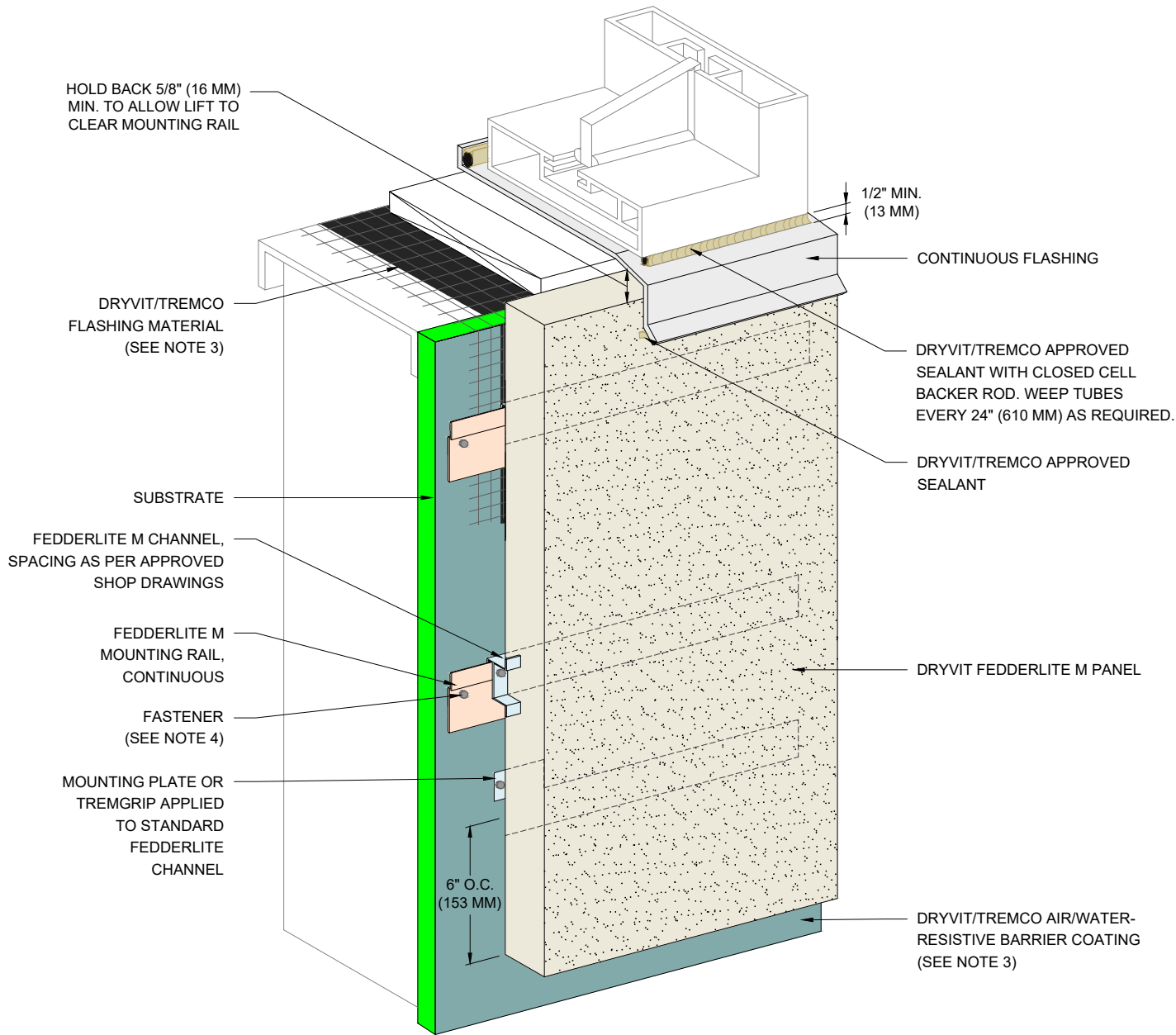
File Name:

FLM 17



Construction Products Group

www.tremcocpg.com





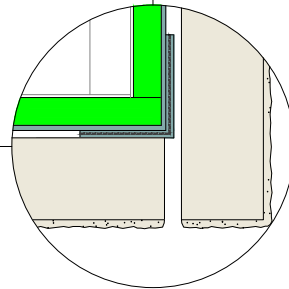
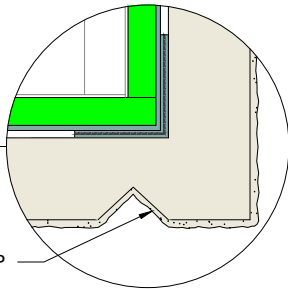
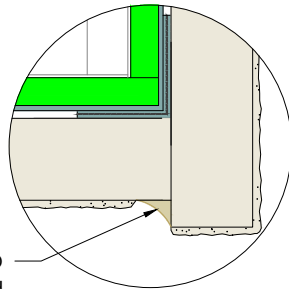
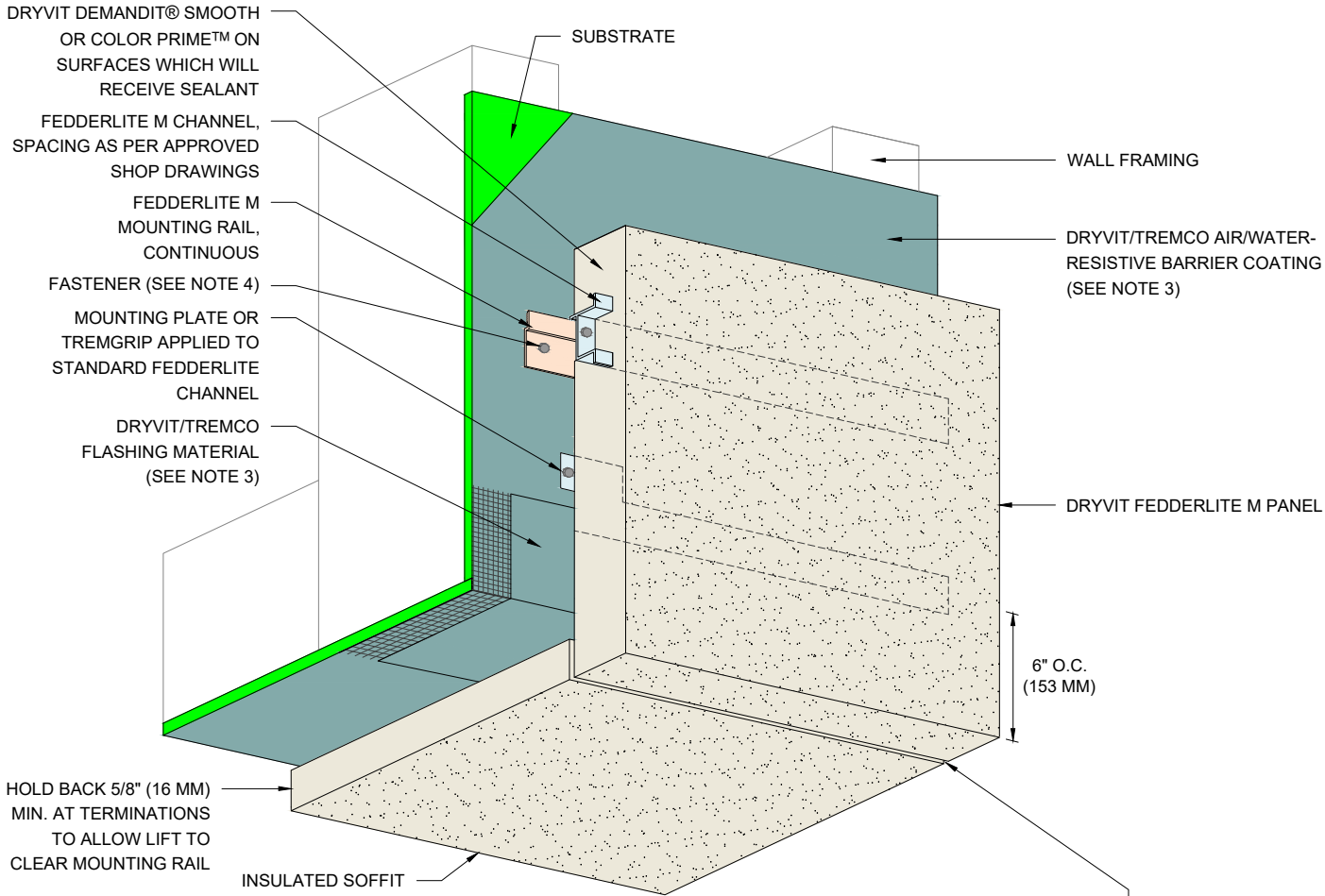
NOTES:

1. DRYVIT RECOMMENDS THAT GROUND FLOOR APPLICATIONS AND ALL FACADES EXPOSED TO ABNORMAL STRESS, HIGH TRAFFIC, OR DELIBERATE IMPACT HAVE THE BASE COAT REINFORCED WITH PANZER® MESH PRIOR TO STANDARD OR STANDARD PLUS MESH. LOCATION OF HIGH IMPACT ZONES SHOULD BE INDICATED ON CONTRACT DRAWINGS.
2. STRUCTURAL ELEMENTS PER DESIGN ENGINEER.
3. REFER TO DRYVIT PUBLICATION DS840 FOR AWRB AND FLASHING APPLICATION.
4. FASTENER DESIGN PER APPROVED ENGINEERED SHOP DRAWINGS.
5. SHIMS TO BE USED FOR DRAINAGE AND TO CORRECT IRREGULARITIES IN THE WALL WHEN REQUIRED (REFER TO DETAIL FLM - 09).

The architecture, engineering, and design of the project using the Dryvit products are the responsibility of the project's design professional. All products and systems must comply with local building codes and standards. This detail is for general information and guidance only and Dryvit specifically disclaims any liability for the use of this detail. The project design professional determines, in its sole discretion, whether this detail or a functionally equivalent detail is best suited for the project. This detail is subject to change without notice. Contact Dryvit to ensure you have the most recent version.

Fedderlite® M Panel System

 Dryvit Technical Support: 800-556-7752	Detail: Sill				File Name:		 Construction Products Group
	Drawn by: KAB	Checked by: SM	Scale: NTS	Date: 10/2/2023	FLM 18		
	www.tremcocpg.com						



DRYVIT/TREMGrip APPROVED SEALANT WITH BOND BREAKER TAPE

WITHOUT MOISTURE DRAINAGE

**CORNER PANEL OPTION
WITHOUT MOISTURE DRAINAGE**

MOISTURE DRAINAGE OPTION

NOTES:

1. DRYVIT RECOMMENDS THAT GROUND FLOOR APPLICATIONS AND ALL FACADES EXPOSED TO ABNORMAL STRESS, HIGH TRAFFIC, OR DELIBERATE IMPACT HAVE THE BASE COAT REINFORCED WITH PANZER® MESH PRIOR TO STANDARD OR STANDARD PLUS MESH. LOCATION OF HIGH IMPACT ZONES SHOULD BE INDICATED ON CONTRACT DRAWINGS.
2. STRUCTURAL ELEMENTS PER DESIGN ENGINEER.
3. REFER TO DRYVIT PUBLICATION DS840 FOR AWRB AND FLASHING APPLICATION.
4. FASTENER DESIGN PER APPROVED ENGINEERED SHOP DRAWINGS.
5. SHIMS TO BE USED FOR DRAINAGE AND TO CORRECT IRREGULARITIES IN THE WALL WHEN REQUIRED (REFER TO DETAIL FLM - 09).

The architecture, engineering, and design of the project using the Dryvit products are the responsibility of the project's design professional. All products and systems must comply with local building codes and standards. This detail is for general information and guidance only and Dryvit specifically disclaims any liability for the use of this detail. The project design professional determines, in its sole discretion, whether this detail or a functionally equivalent detail is best suited for the project. This detail is subject to change without notice. Contact Dryvit to ensure you have the most recent version.

Fedderlite® M Panel System



Detail: Transition at Fascia/Soffit Intersection - Insulated

Drawn by: KAB

Checked by: SM

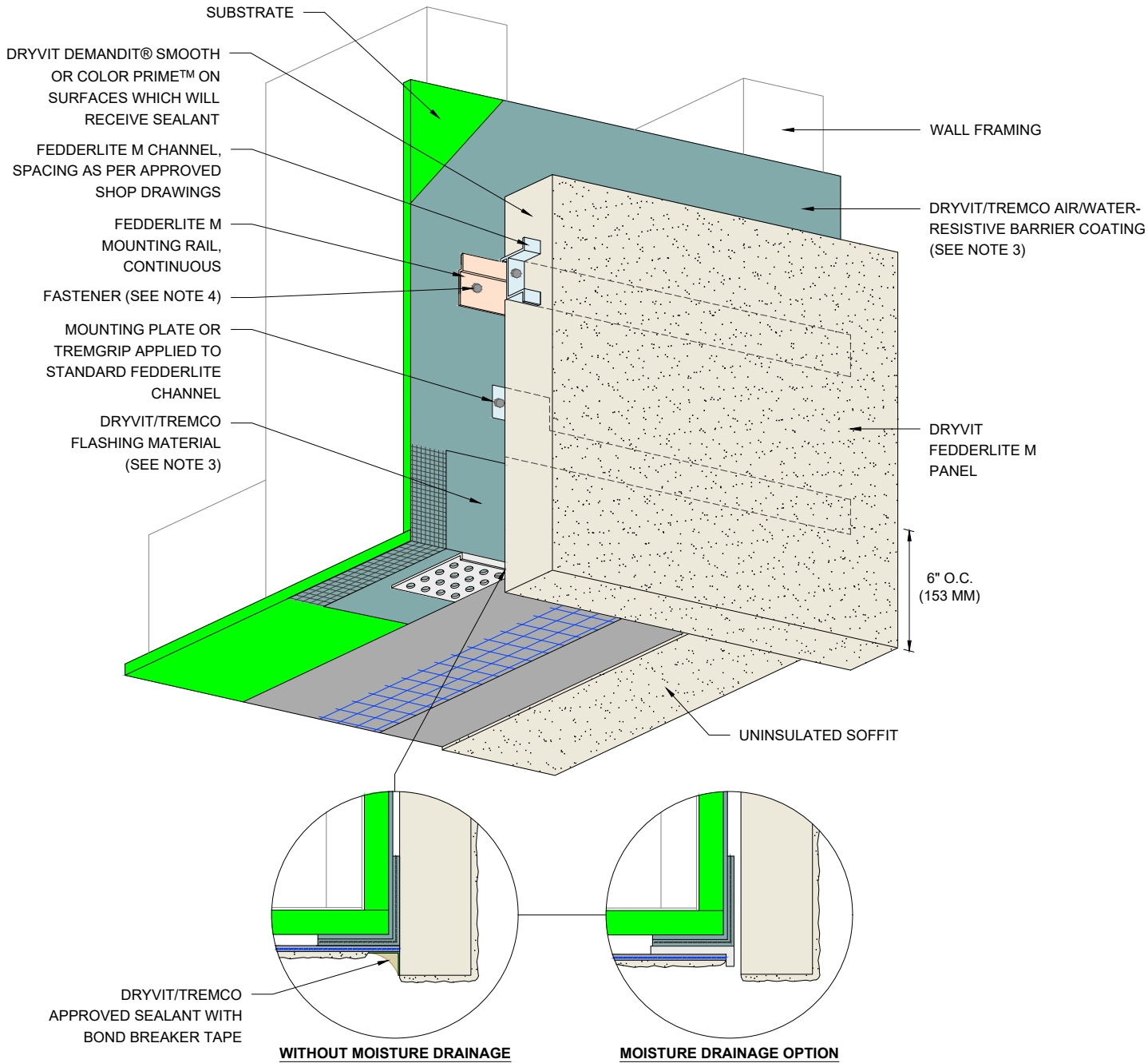
Scale: NTS

Date: 10/2/2023

File Name:

FLM 19





NOTES:

1. DRYVIT RECOMMENDS THAT GROUND FLOOR APPLICATIONS AND ALL FACADES EXPOSED TO ABNORMAL STRESS, HIGH TRAFFIC, OR DELIBERATE IMPACT HAVE THE BASE COAT REINFORCED WITH PANZER® MESH PRIOR TO STANDARD OR STANDARD PLUS MESH. LOCATION OF HIGH IMPACT ZONES SHOULD BE INDICATED ON CONTRACT DRAWINGS.
2. STRUCTURAL ELEMENTS PER DESIGN ENGINEER.
3. REFER TO DRYVIT PUBLICATION DS840 FOR AWRB AND FLASHING APPLICATION.
4. FASTENER DESIGN PER APPROVED ENGINEERED SHOP DRAWINGS.
5. SHIMS TO BE USED FOR DRAINAGE AND TO CORRECT IRREGULARITIES IN THE WALL WHEN REQUIRED (REFER TO DETAIL FLM - 09).

The architecture, engineering, and design of the project using the Dryvit products are the responsibility of the project's design professional. All products and systems must comply with local building codes and standards. This detail is for general information and guidance only and Dryvit specifically disclaims any liability for the use of this detail. The project design professional determines, in its sole discretion, whether this detail or a functionally equivalent detail is best suited for the project. This detail is subject to change without notice. Contact Dryvit to ensure you have the most recent version.

Fedderlite® M Panel System



Dryvit Technical Support: 800-556-7752

Detail: Transition at Fascia/Soffit Intersection - Uninsulated

Drawn by: KAB

Checked by: SM

Scale: NTS

Date: 10/2/2023

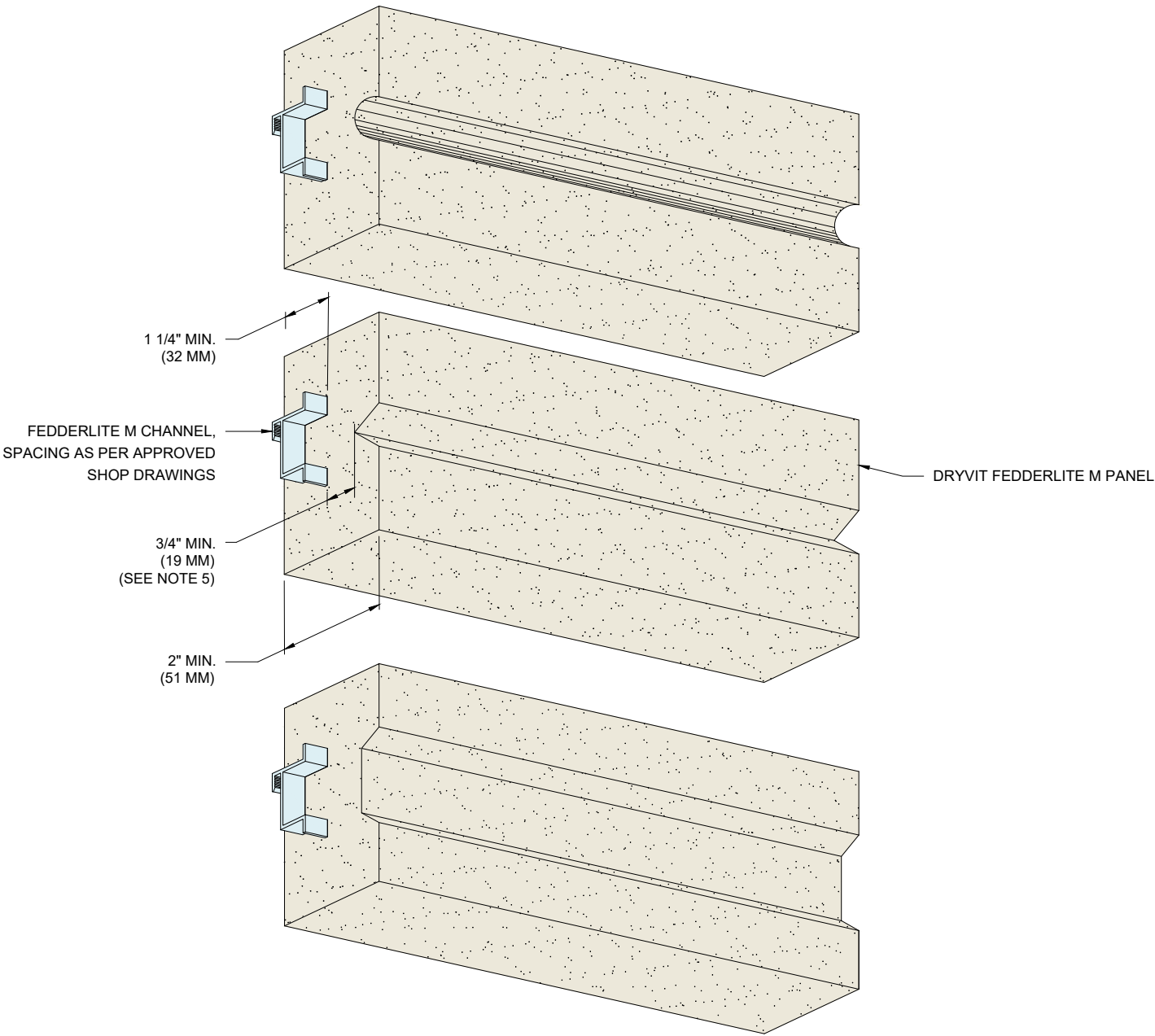
File Name:

FLM 20



Construction Products Group

www.tremcocpg.com



NOTES:

1. DRYVIT RECOMMENDS THAT GROUND FLOOR APPLICATIONS AND ALL FACADES EXPOSED TO ABNORMAL STRESS, HIGH TRAFFIC, OR DELIBERATE IMPACT HAVE THE BASE COAT REINFORCED WITH PANZER® MESH PRIOR TO STANDARD OR STANDARD PLUS MESH. LOCATION OF HIGH IMPACT ZONES SHOULD BE INDICATED ON CONTRACT DRAWINGS.

2. STRUCTURAL ELEMENTS PER DESIGN ENGINEER.



3. REFER TO DRYVIT PUBLICATION DS840 FOR AWRB AND FLASHING APPLICATION.

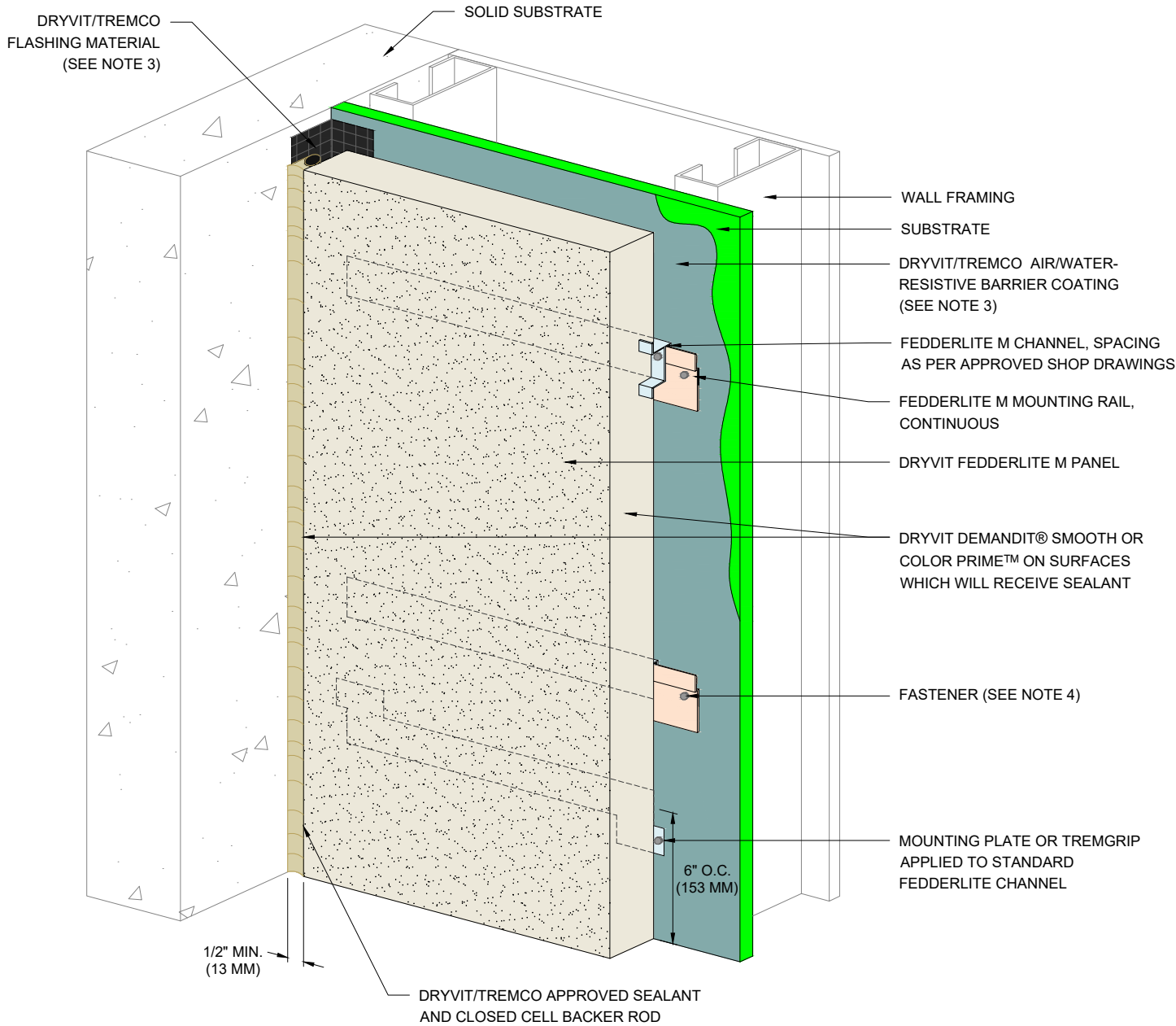
4. FASTENER DESIGN PER APPROVED ENGINEERED SHOP DRAWINGS.

5. 3/4" MINIMUM THICKNESS OF EPS MUST BE MAINTAINED BETWEEN REVEAL AND CHANNEL.

The architecture, engineering, and design of the project using the Dryvit products are the responsibility of the project's design professional. All products and systems must comply with local building codes and standards. This detail is for general information and guidance only and Dryvit specifically disclaims any liability for the use of this detail. The project design professional determines, in its sole discretion, whether this detail or a functionally equivalent detail is best suited for the project. This detail is subject to change without notice. Contact Dryvit to ensure you have the most recent version.

Fedderlite® M Panel System

 Dryvit Technical Support: 800-556-7752	Detail: Typical Aesthetic Reveals				File Name:	 <i>Construction Products Group</i>
	Drawn by: KAB	Checked by: SM	Scale: NTS	Date: 10/2/2023	FLM 21	
	www.tremcocpg.com					



NOTES:

1. DRYVIT RECOMMENDS THAT GROUND FLOOR APPLICATIONS AND ALL FACADES EXPOSED TO ABNORMAL STRESS, HIGH TRAFFIC, OR DELIBERATE IMPACT HAVE THE BASE COAT REINFORCED WITH PANZER® MESH PRIOR TO STANDARD OR STANDARD PLUS MESH. LOCATION OF HIGH IMPACT ZONES SHOULD BE INDICATED ON CONTRACT DRAWINGS.
2. STRUCTURAL ELEMENTS PER DESIGN ENGINEER.
3. REFER TO DRYVIT PUBLICATION DS840 FOR AWRB AND FLASHING APPLICATION.
4. FASTENER DESIGN PER APPROVED ENGINEERED SHOP DRAWINGS.
5. SHIMS TO BE USED FOR DRAINAGE AND TO CORRECT IRREGULARITIES IN THE WALL WHEN REQUIRED (REFER TO DETAIL FLM - 09).

The architecture, engineering, and design of the project using the Dryvit products are the responsibility of the project's design professional. All products and systems must comply with local building codes and standards. This detail is for general information and guidance only and Dryvit specifically disclaims any liability for the use of this detail. The project design professional determines, in its sole discretion, whether this detail or a functionally equivalent detail is best suited for the project. This detail is subject to change without notice. Contact Dryvit to ensure you have the most recent version.

Fedderlite® M Panel System



Detail: Termination at Dissimilar Materials

File Name:

Drawn by: KAB

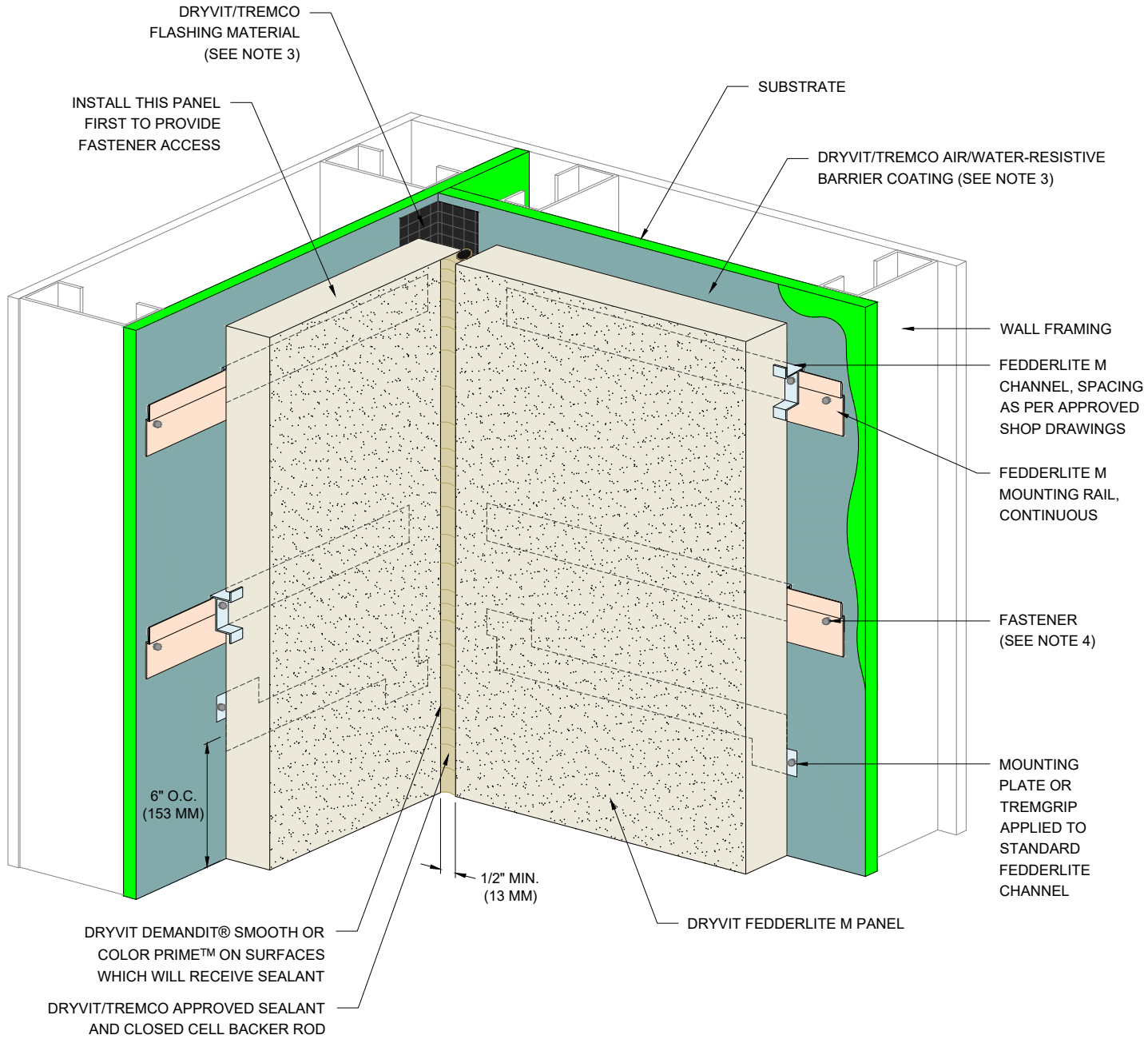
Checked by: SM

Scale: NTS

Date: 10/2/2023

FLM 22





NOTES:

1. DRYVIT RECOMMENDS THAT GROUND FLOOR APPLICATIONS AND ALL FACADES EXPOSED TO ABNORMAL STRESS, HIGH TRAFFIC, OR DELIBERATE IMPACT HAVE THE BASE COAT REINFORCED WITH PANZER® MESH PRIOR TO STANDARD OR STANDARD PLUS MESH. LOCATION OF HIGH IMPACT ZONES SHOULD BE INDICATED ON CONTRACT DRAWINGS.
2. STRUCTURAL ELEMENTS PER DESIGN ENGINEER.
3. REFER TO DRYVIT PUBLICATION DS840 FOR AWRB AND FLASHING APPLICATION.
4. FASTENER DESIGN PER APPROVED ENGINEERED SHOP DRAWINGS.
5. SHIMS TO BE USED FOR DRAINAGE AND TO CORRECT IRREGULARITIES IN THE WALL WHEN REQUIRED (REFER TO DETAIL FLM - 09).

The architecture, engineering, and design of the project using the Dryvit products are the responsibility of the project's design professional. All products and systems must comply with local building codes and standards. This detail is for general information and guidance only and Dryvit specifically disclaims any liability for the use of this detail. The project design professional determines, in its sole discretion, whether this detail or a functionally equivalent detail is best suited for the project. This detail is subject to change without notice. Contact Dryvit to ensure you have the most recent version.

Fedderlite® M Panel System



Dryvit Technical Support: 800-556-7752

Detail: Inside Corner Joint

Drawn by: KAB

Checked by: SM

Scale: NTS

Date: 10/2/2023

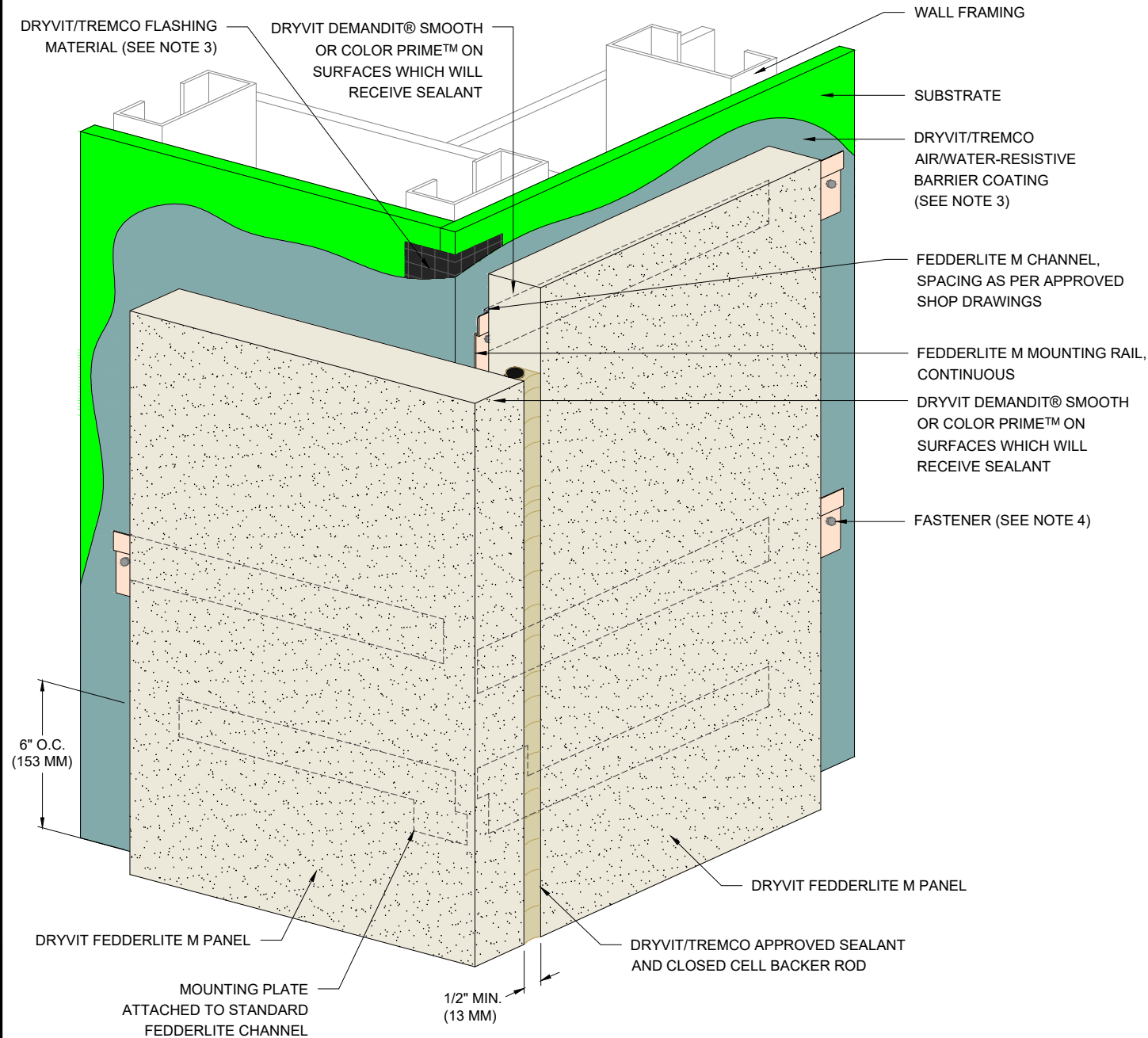
File Name:

FLM 23



Construction Products Group

www.tremcocpg.com





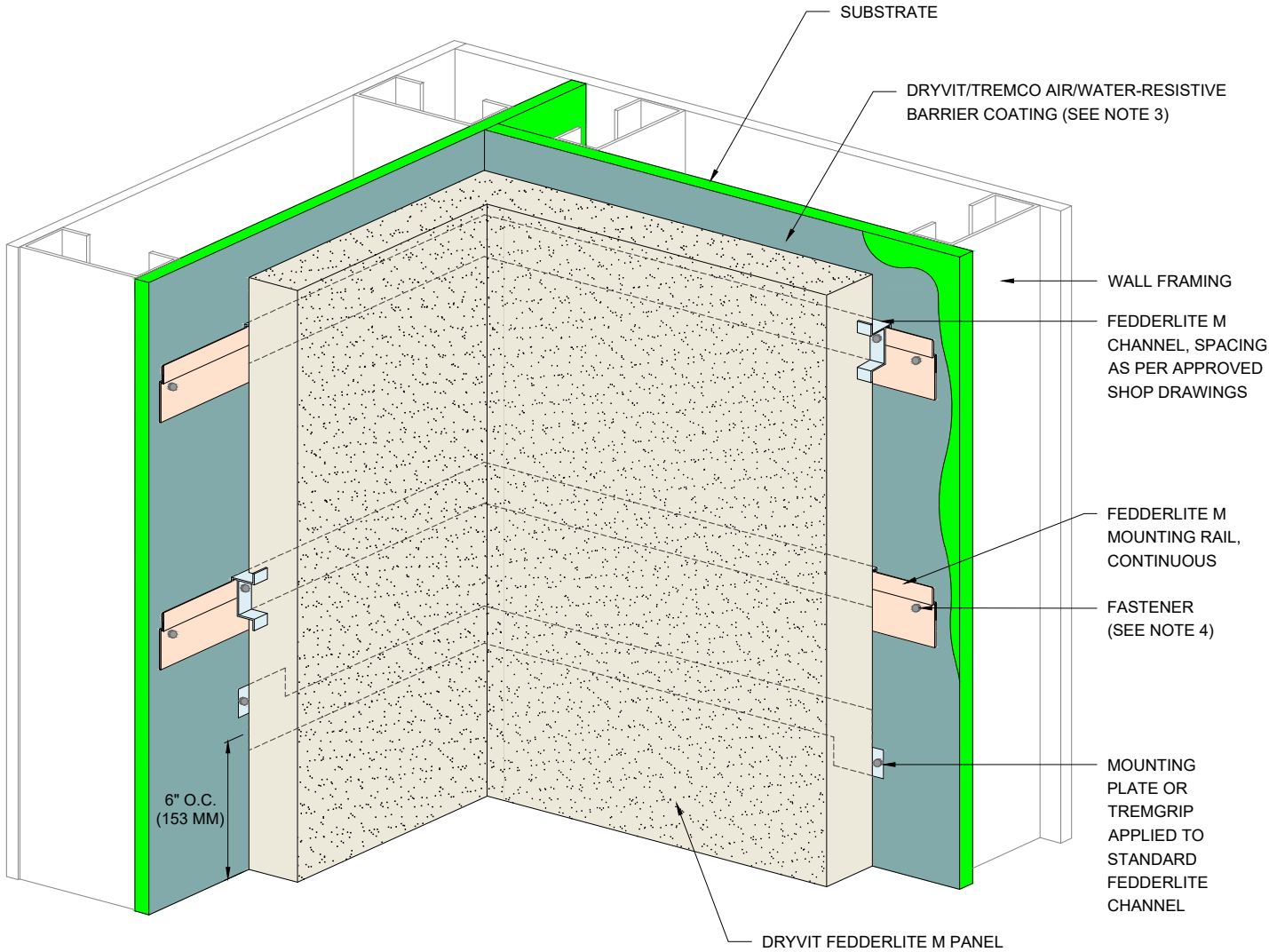
NOTES:

1. DRYVIT RECOMMENDS THAT GROUND FLOOR APPLICATIONS AND ALL FACADES EXPOSED TO ABNORMAL STRESS, HIGH TRAFFIC, OR DELIBERATE IMPACT HAVE THE BASE COAT REINFORCED WITH PANZER® MESH PRIOR TO STANDARD OR STANDARD PLUS MESH. LOCATION OF HIGH IMPACT ZONES SHOULD BE INDICATED ON CONTRACT DRAWINGS.
2. STRUCTURAL ELEMENTS PER DESIGN ENGINEER.
3. REFER TO DRYVIT PUBLICATION DS840 FOR AWRB AND FLASHING APPLICATION.
4. FASTENER DESIGN PER APPROVED ENGINEERED SHOP DRAWINGS.
5. SHIMS TO BE USED FOR DRAINAGE AND TO CORRECT IRREGULARITIES IN THE WALL WHEN REQUIRED (REFER TO DETAIL FLM - 09).

The architecture, engineering, and design of the project using the Dryvit products are the responsibility of the project's design professional. All products and systems must comply with local building codes and standards. This detail is for general information and guidance only and Dryvit specifically disclaims any liability for the use of this detail. The project design professional determines, in its sole discretion, whether this detail or a functionally equivalent detail is best suited for the project. This detail is subject to change without notice. Contact Dryvit to ensure you have the most recent version.

Fedderlite® M Panel System

 Dryvit Technical Support: 800-556-7752	Detail: Outside Corner Joint				File Name:	
	Drawn by: KAB	Checked by: SM	Scale: NTS	Date: 10/2/2023	FLM 24	
	www.tremcocpg.com				 Construction Products Group	



NOTES:

1. DRYVIT RECOMMENDS THAT GROUND FLOOR APPLICATIONS AND ALL FACADES EXPOSED TO ABNORMAL STRESS, HIGH TRAFFIC, OR DELIBERATE IMPACT HAVE THE BASE COAT REINFORCED WITH PANZER® MESH PRIOR TO STANDARD OR STANDARD PLUS MESH. LOCATION OF HIGH IMPACT ZONES SHOULD BE INDICATED ON CONTRACT DRAWINGS.
2. STRUCTURAL ELEMENTS PER DESIGN ENGINEER.
3. REFER TO DRYVIT PUBLICATION DS840 FOR AWRB AND FLASHING APPLICATION.
4. FASTENER DESIGN PER APPROVED ENGINEERED SHOP DRAWINGS.
5. SHIMS TO BE USED FOR DRAINAGE AND TO CORRECT IRREGULARITIES IN THE WALL WHEN REQUIRED (REFER TO DETAIL FLM - 09).

The architecture, engineering, and design of the project using the Dryvit products are the responsibility of the project's design professional. All products and systems must comply with local building codes and standards. This detail is for general information and guidance only and Dryvit specifically disclaims any liability for the use of this detail. The project design professional determines, in its sole discretion, whether this detail or a functionally equivalent detail is best suited for the project. This detail is subject to change without notice. Contact Dryvit to ensure you have the most recent version.

Fedderlite® M Panel System



Detail: Inside Corner Panel

Drawn by: KAB

Checked by: SM

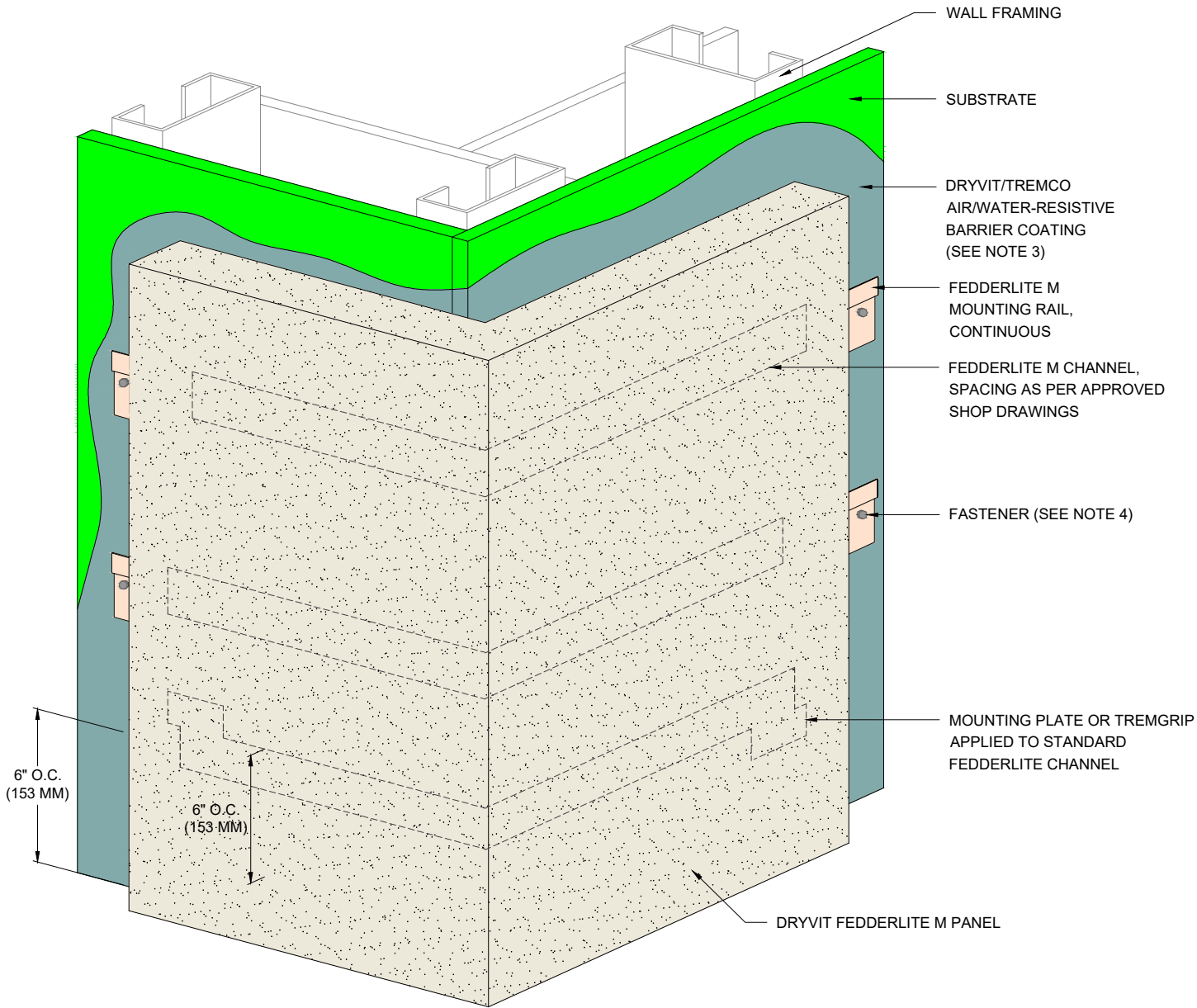
Scale: NTS

Date: 10/2/2023

File Name:

FLM 25





NOTES:

1. DRYVIT RECOMMENDS THAT GROUND FLOOR APPLICATIONS AND ALL FACADES EXPOSED TO ABNORMAL STRESS, HIGH TRAFFIC, OR DELIBERATE IMPACT HAVE THE BASE COAT REINFORCED WITH PANZER® MESH PRIOR TO STANDARD OR STANDARD PLUS MESH. LOCATION OF HIGH IMPACT ZONES SHOULD BE INDICATED ON CONTRACT DRAWINGS.
2. STRUCTURAL ELEMENTS PER DESIGN ENGINEER.
3. REFER TO DRYVIT PUBLICATION DS840 FOR AWRB AND FLASHING APPLICATION.
4. FASTENER DESIGN PER APPROVED ENGINEERED SHOP DRAWINGS.
5. SHIMS TO BE USED FOR DRAINAGE AND TO CORRECT IRREGULARITIES IN THE WALL WHEN REQUIRED (REFER TO DETAIL FLM - 09).

The architecture, engineering, and design of the project using the Dryvit products are the responsibility of the project's design professional. All products and systems must comply with local building codes and standards. This detail is for general information and guidance only and Dryvit specifically disclaims any liability for the use of this detail. The project design professional determines, in its sole discretion, whether this detail or a functionally equivalent detail is best suited for the project. This detail is subject to change without notice. Contact Dryvit to ensure you have the most recent version.

Fedderlite® M Panel System



Detail: Inside Corner Panel

Drawn by: KAB

Checked by: SM

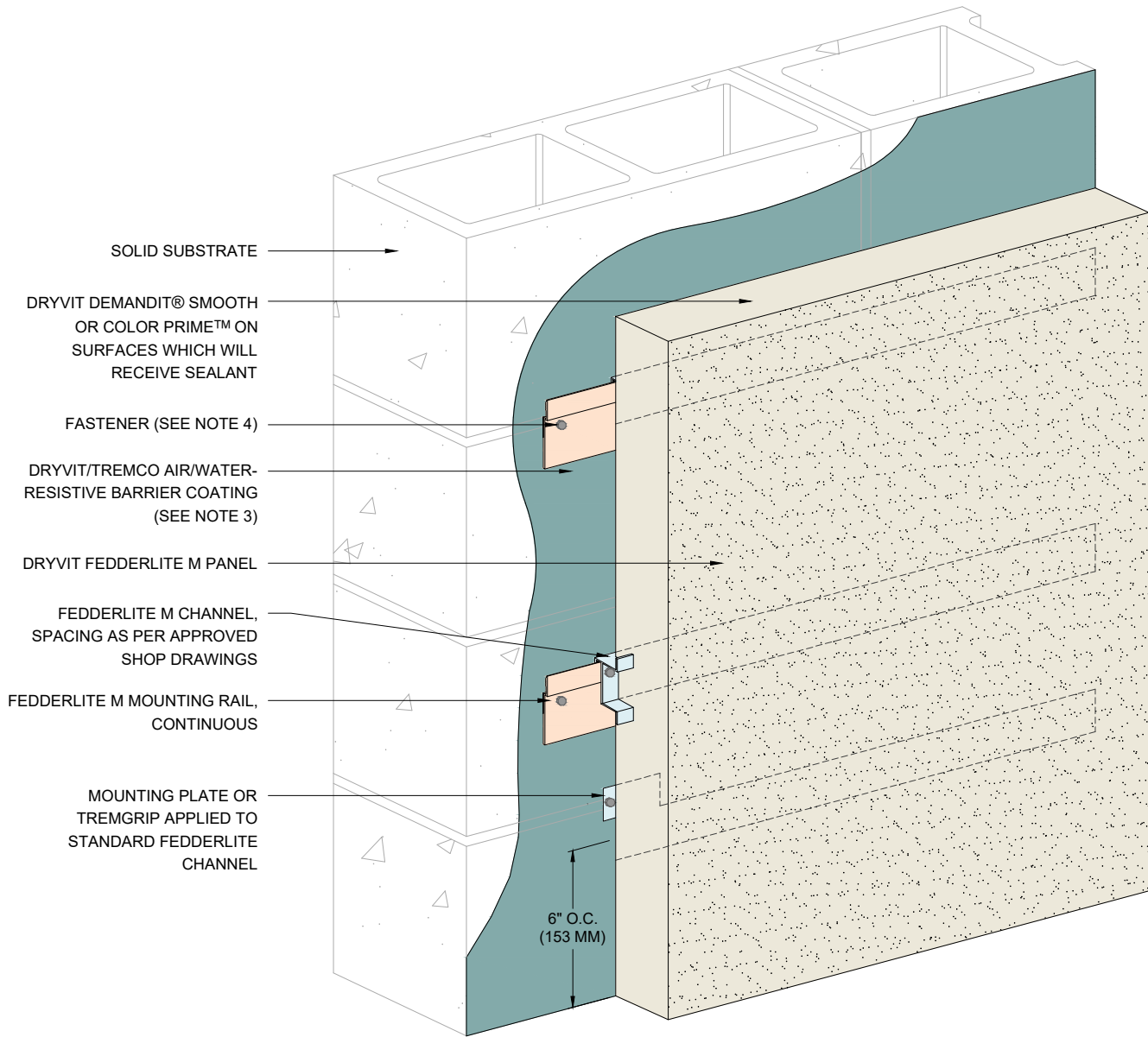
Scale: NTS

Date: 10/2/2023

File Name:

FLM 26





NOTES:

1. DRYVIT RECOMMENDS THAT GROUND FLOOR APPLICATIONS AND ALL FACADES EXPOSED TO ABNORMAL STRESS, HIGH TRAFFIC, OR DELIBERATE IMPACT HAVE THE BASE COAT REINFORCED WITH PANZER® MESH PRIOR TO STANDARD OR STANDARD PLUS MESH. LOCATION OF HIGH IMPACT ZONES SHOULD BE INDICATED ON CONTRACT DRAWINGS.
2. STRUCTURAL ELEMENTS PER DESIGN ENGINEER.
3. REFER TO DRYVIT PUBLICATION DS840 FOR AWRB AND FLASHING APPLICATION.
4. FASTENER DESIGN PER APPROVED ENGINEERED SHOP DRAWINGS.
5. SHIMS TO BE USED FOR DRAINAGE AND TO CORRECT IRREGULARITIES IN THE WALL WHEN REQUIRED (REFER TO DETAIL FLM - 09).

The architecture, engineering, and design of the project using the Dryvit products are the responsibility of the project's design professional. All products and systems must comply with local building codes and standards. This detail is for general information and guidance only and Dryvit specifically disclaims any liability for the use of this detail. The project design professional determines, in its sole discretion, whether this detail or a functionally equivalent detail is best suited for the project. This detail is subject to change without notice. Contact Dryvit to ensure you have the most recent version.

Fedderlite® M Panel System



Detail: Face Fastening to Solid Substrate

Drawn by: KAB

Checked by: SM

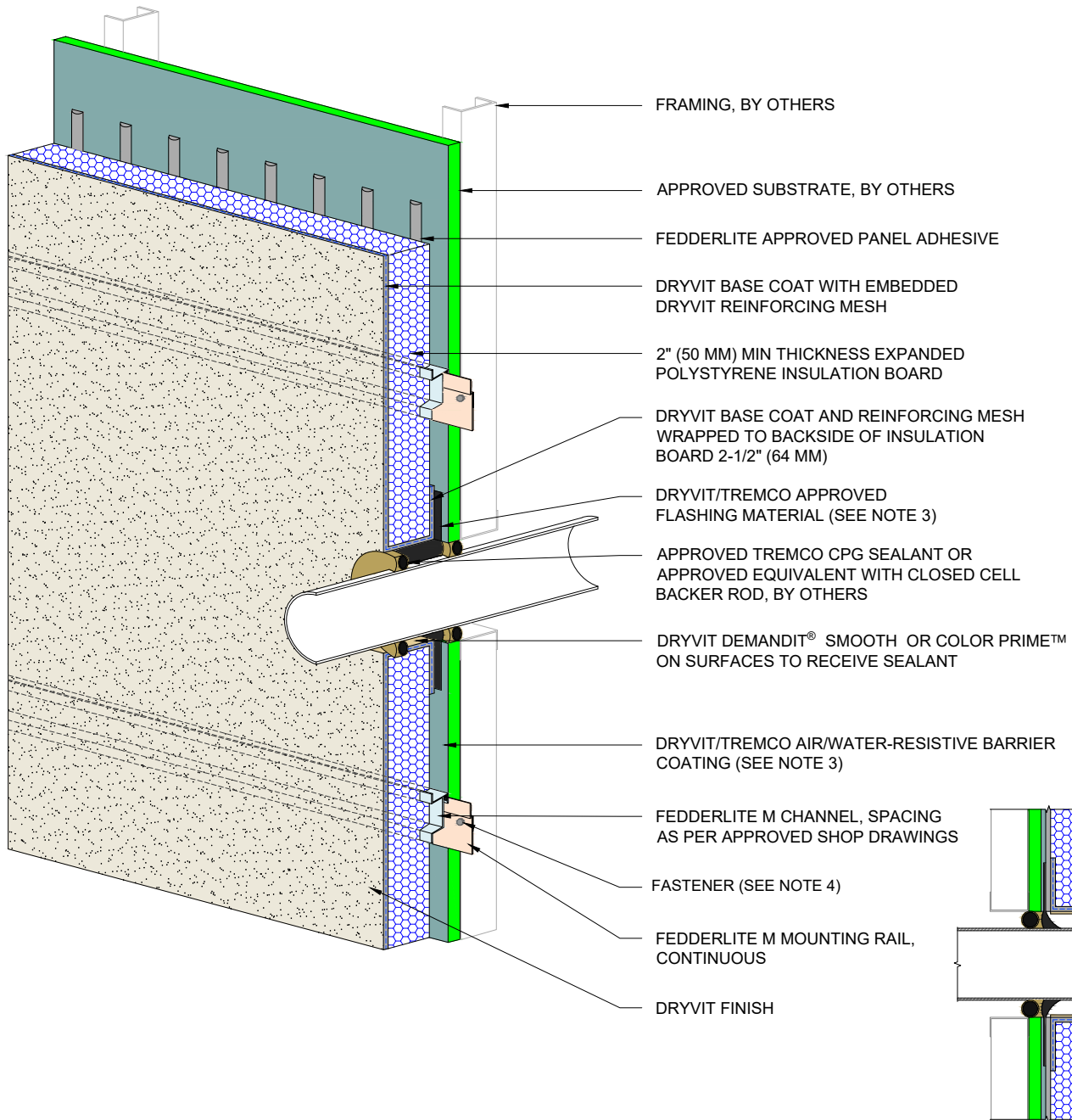
Scale: NTS

Date: 10/2/2023

File Name:

FLM 27





NOTES:

1. DRYVIT RECOMMENDS THAT GROUND FLOOR APPLICATIONS AND ALL FACADES EXPOSED TO ABNORMAL STRESS, HIGH TRAFFIC, OR DELIBERATE IMPACT HAVE THE BASE COAT REINFORCED WITH PANZER® MESH PRIOR TO STANDARD OR STANDARD PLUS MESH. LOCATION OF HIGH IMPACT ZONES SHOULD BE INDICATED ON CONTRACT DRAWINGS.
2. LIGHT GAUGE STEEL FRAME SHALL BE DESIGNED FOR SPECIFIC PROJECT LOADS AND CONDITIONS TO MEET LOCAL BUILDING CODES BY LICENSED ENGINEER.
3. REFER TO DRYVIT PUBLICATION DS840 FOR AWRB AND FLASHING APPLICATION.
4. FASTENER DESIGN PER APPROVED ENGINEERED SHOP DRAWINGS.

The architecture, engineering, and design of the project using the Dryvit products are the responsibility of the project's design professional. All products and systems must comply with local building codes and standards. This detail is for general information and guidance only and Dryvit specifically disclaims any liability for the use of this detail. The project design professional determines, in its sole discretion, whether this detail or a functionally equivalent detail is best suited for the project. This detail is subject to change without notice. Contact Dryvit to ensure you have the most recent version.

Fedderlite® M Panel System



Detail: Penetration

Drawn by: HDE

Checked by: RB
CW

Scale: NTS

Date: 10/2/2023

File Name:

FLM 28

