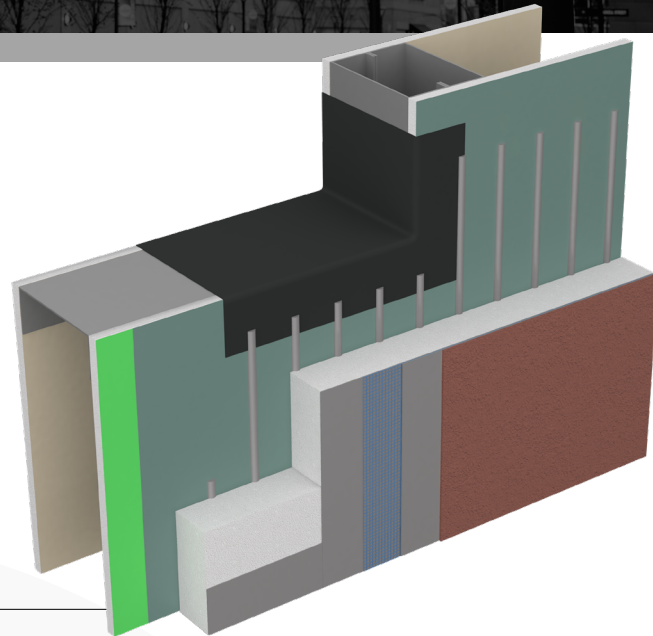


# OUTSULATION® PLUS MD

An exterior wall insulation and finish system with moisture drainage that incorporates continuous insulation and an air/water-resistive barrier

## System Overview

Dryvit® offers a family of performance-based systems that allows architects and owners to meet the specific demands of today's energy codes, such as continuous insulation and an air/water-resistive barrier. Dryvit's original Outsulation® System has been installed on over 500,000 buildings worldwide. Due to the increased demands for a wall system to be able to drain away incidental moisture, the Outsulation concept has grown into a family of related systems, each building upon the other to achieve specific performance goals.



## Efficient and Economical

Outsulation Plus MD expands upon the proven weatherability and insulating qualities of Outsulation by adding a second line of defense against air, moisture and weather. This is accomplished with a coating of a Dryvit/Tremco® approved air/water resistive barrier and accessories at all sills of openings. Outsulation Plus MD goes one step further through the use of adhesive channels to provide moisture drainage. These channels work in tandem with either of two system termination options, resulting in an efficient and economical system that is easy to install.

## Features & Benefits

- Moisture Drainage
- High-Performance Exterior Insulation
- Reinforced Base Coat
- Drainage Track
- Air/Water-Resistive Barrier
- Waterproof Flashing Material
- Warranty



# System Components

1. Air/Water-Resistive Barrier: Backstop® NTX™ Water-Resistive Membrane and Air Barrier (available in Texture, Smooth or Spray), Backstop NT-VB or ExoAir® 230 Synthetic Air & Vapor Permeable Membrane
2. Dryvit Grid Tape™
3. Dryvit AquaFlash® System, Dymonic® 100 or Backstop Flash & Fill™
4. Dryvit Drainage Track™, Dryvit Drainage Strip™ adhered with TREMGrip or Pre-Based Starter Board
5. Dryvit Adhesive in vertical notched trowel configuration
6. EPS Insulation Boards, creating a layer of continuous insulation
7. Dryvit Reinforced Base Coat
8. Dryvit Finish



## Why Tremco Construction Products Group?

When we say Tremco Construction Products Group (CPG) companies provide envelope solutions for all sides of the building, that means comprehensive product systems that make it faster to build or restore, simpler to maintain, and that extend the building's useable life.

Together, solutions from Tremco CPG companies empower your team to bring their vision to life, whether it's new construction, renovations or restoration — to improve weathertightness and energy efficiency, give a brand new look to an aging structure, or complete a historical preservation.

## One Stop for Your Next Project's Building Envelope

Imagine the convenience of one source for information and assistance on building envelope components. One source for all the project-specific, custom details with solutions that are tested, proven and warranted together. A Tremco Construction Products Group building envelope is designed and tested to work as one continuous system and is warranted together in a single document.

Dryvit | 3735 Green Road | Beachwood, OH 44122 | 401.822.4100 | [dryvit.com](http://dryvit.com)

Tremco Construction Products Group (CPG) brings together Tremco CPG Inc. and its Dryvit and Nudura brands; Willseal; Prebuck LLC; Tremco Barrier Solutions, Inc.; Weatherproofing Technologies, Inc. and its Pure Air Control Services and Canam Building Envelope Specialists offerings; and Weatherproofing Technologies Canada, Inc.

 **TREMCO**  
Construction Products Group

Use of the ® symbol indicates registration with the US Patent & Trademark Office and the Canadian Intellectual Property Office.

DS929 | 09/2024

[tremcocpg.com](http://tremcocpg.com)