



TECHNICAL DATA SHEET

DSI 320 Residential Sealant
DSI 300 Residential Sealant Primer
Joint Sealant and Sealant Primer for
Residential Construction
DS438

PRODUCT DESCRIPTION

SEALANT: A one-component, moisture curing, polyurethane joint sealant. The DSI 320 formulation possesses balanced adhesive strength when used in conjunction with the required DSI 300 Residential Sealant Primer. DSI 320 is a low modulus and high recovery sealant, making it ideal to withstand moisture, movement, shear and deflection.

SEALANT PRIMER: DSI 300 is a one-part light amber colored solution. It is specifically formulated to enhance the adhesion of Dryvit's DSI 320 Residential Sealant. It dries quickly and is easily applied by brush or swab.

BASIC USES

SEALANT: DSI 320 is intended for exterior residential use only. It is recommended for sealing expansion and control joints as well as perimeter seals at all wall penetrations.

SEALANT PRIMER: Required as an adhesion promoter and surface sealer for Dryvit's DSI 320 Residential Sealant.

COLORS

SEALANT: Anodized Aluminum, Bronze, Precast White and Ivory.

PROPERTIES

SEALANT: DSI 320 meets the requirements of U.S. Federal Specifications TT-S00230C and applicable ASTM tests.

SEALANT DSI 320		
CURED SEALANT PROPERTIES	TEST METHOD	TYPICAL VALUE
Adhesion in Peel	ASTM C-794	20-28 lbs./in.
Staining	ASTM C-510	Passes
Hardness at Std. Conditions.	ASTM C-661	25 ± 5.
Movement Capability	ASTM C-719	± 25%
Application Temperature (substrate)	N/A	+40 to 140°F

Cure Rate at 75°F and 50% R.H.: 1. Initial skinning 12-16 hours; 2. Firm skin 24 hour; 3. Thorough cure 5-7 days.

Application Procedure:

SEALANT: The surface to be sealed shall be completely dry, clean, free of moisture, frost, dew or other contaminants that can affect adhesion. Only closed cell polyethylene or non-gassing polyolefin backer rods are permitted. Do not use open cell backer rods. Bond breaker tape may be used where a backer rod is not practical. The backer rod must be sized approximately 25% larger than the joint width and shall be set at a depth as indicated. See DSI 320 Coverage. Install the backer rod with a blunt tool to avoid puncturing. Do not twist the backer rod during installation and try to avoid touching or contaminating the inside surface of the joint that has been cleaned and primed. Prior to installing the DSI 320 Residential Sealant, verify that the sealant to be used is within the stated shelf life of one (1) year. Install the DSI 320 Residential Sealant completely filling the joint making full contact with the sides of the joint. Do not underfill the joint. Tool the joint with a rounded instrument, such as a spatula, to provide a concave profile on the sealant surface. Do not wet the sealant with soap, water or any other liquid tooling aid. Protect the DSI 320 Residential Sealant from damage during the cure process.

SEALANT PRIMER: The surface to be primed shall be completely dry, clean, free of moisture, frost, dew or other contaminants that can affect adhesion. Since DSI 300 Residential Sealant Primer has a short pot life once opened, only pour enough to use for a couple of hours in a small, clean container. At the end of the day, always discard the remaining primer since it will have become contaminated and can lose its solvents through evaporation. Apply DSI 300 Residential Sealant Primer as received (do not thin) in a continuous film using a brush or swab. Prime only the joint surfaces that are to be sealed on a given day. Allow the DSI 300 Residential Sealant Primer to dry a minimum of 30 minutes prior to applying DSI 320 Residential Sealant. The primed surface shall be tack free prior to applying DSI 320 Residential Sealant.

COVERAGE

SEALANT: All coverages are approximate and depend on joint size (width and depth) and individual application technique.

JOINT SIZE(WIDTH X DEPTH)	LINEAR FEET PER CARTRIDGE*
3/8 X ¼	16
3/4 X 1/2	4

* Cartridge size: .315 L (1/12 U.S. Gal.); packaged 30/case

SEALANT PRIMER: Coverage is approximate and depends on individual application technique. Typical coverage is 400 to 600 square feet per gallon. DSI 300 is available in 0.47 L (1 pint) cans; 12 cans per case.

STORAGE

SEALANT: Twelve months from date of manufacture when stored in a dry area below 21°C (70°F) and 50% R.H. Cases are date stamped.

SEALANT PRIMER: Twelve months from date of manufacture when stored unopened in a dry area at a temperature below 27°C (80°F).

WARRANTY

This sealant shall be free from manufacturing defects. Dryvit's sole liability under this warranty will be to supply a replacement amount of sealant for the material found to be defective. Dryvit makes no other warranties expressed or implied, including implied warranties of merchantability and fitness for a particular purpose. Dryvit shall not be liable for incidental or consequential damages.

DETAILS

(Please refer to details on Appendix A)

The sizing of expansion joints is the responsibility of the design professional. Details prepared by Dryvit Systems, Inc. represent typical and/or general conditions and are presented in good faith by Dryvit Systems, Inc. Dryvit assumes no responsibility for joint design. Ensure that the insulation board is completely covered with a Dryvit base coat. The reinforcing mesh shall be completely encapsulated in the base material mixture.

The base coat must be completely dry prior to applying Dryvit's Color Prime or Demandit. Under normal drying conditions (70°F, 55% R.H.), the base coat will dry within 24 hours. Adverse drying conditions may require that the joints be temporarily protected in order to expedite the drying process.

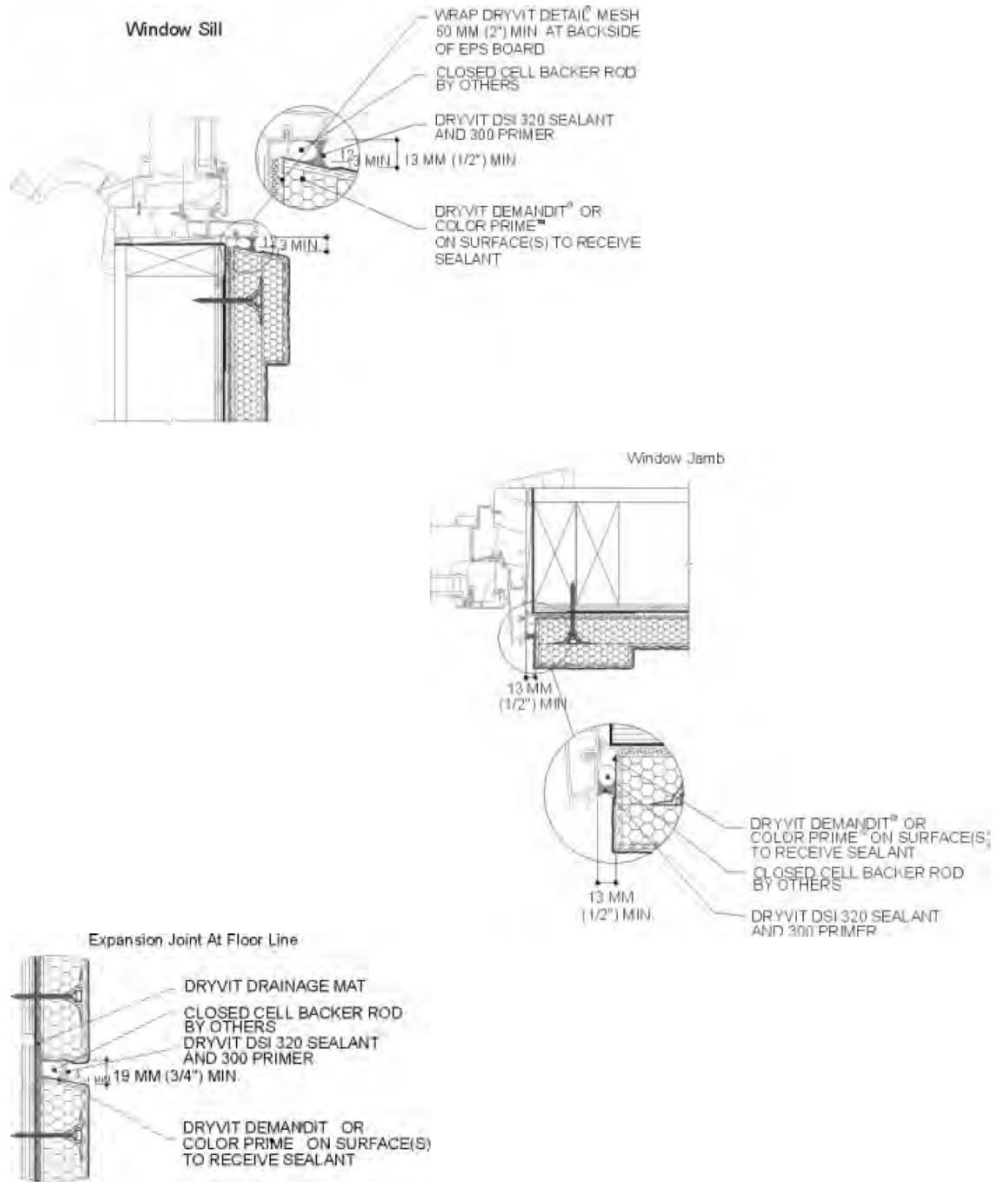
The base coat must be clean, dry and free of efflorescence or other contaminants prior to applying Dryvit's Color Prime™ or Demandit®. Dryvit's Color Prime or Demandit shall be brush applied on the dry base coat where the DSI 320 Sealant will be in contact with the system.

The Color Prime or Demandit shall be allowed to dry a minimum of 24 hours prior to applying DSI 300 Residential Sealant Primer and DSI 320 Residential Sealant. Under normal drying conditions (70°F, 55% R.H.), the Color Prime or Demandit will dry to the touch in 1/2 hour, yet shall be protected from the elements for a minimum of 24 hours. Adverse drying conditions may require that the joints be temporarily protected in order to expedite the drying process.

CAUTIONS & LIMITATIONS

Users must follow product label and Material Safety Data Sheet for warnings and precautions prior to opening containers and during use and storage. DSI 300 and DSI 320 must be used with adequate ventilation and personal protection, and vapors must be prevented from entering occupied buildings. DSI 300 will darken surfaces to which it is applied. Therefore, care must be taken to apply it only to areas to receive the sealant.

APPENDIX A



Information contained in this product sheet conforms to the standard detail recommendations and specifications for the installation of Dryvit products as of the date of publication of this document and is presented in good faith. Dryvit assumes no liability, expressed or implied, as to the architecture, engineering or workmanship of any project. To ensure that you are using the latest, most complete information, contact Dryvit.

For more information on Dryvit or Continuous Insulation, [click here](#).

Printed in USA. Issued 1.1.2022
 ©Dryvit 2022
 DS438

Tremco Construction Products Group (CPG) brings together the Commercial Sealants & Waterproofing and Roofing & Building Maintenance divisions of Tremco CPG Inc.; Dryvit and Willseal brands; Nudura Inc.; Prebuck LLC; Tremco Barrier Solutions, Inc.; Weatherproofing Technologies, Inc.; Weatherproofing Technologies Canada, Inc.; and Pure Air Control Services, Inc.



dryvit.com | 800.556.7752



Construction Products Group

3735 Green Rd. | Beachwood, OH 44122
 800.321.7906 | tremcocpg.com