

Outsulation® PE Securock® ExoAir® 430 System

USG  **TREMCO**
SECUROCK® EXOAIR® 430



DS915

**An Exterior Wall Insulation and Finish System With Moisture Drainage
That Incorporates Continuous Insulation and An Air/Water-Resistive Barrier**

Outsulation PE Securock ExoAir 430 System Installation Details

Table of Contents

DETAIL

OUTSULATION PE SECUROCK EXOAIR 430 SYSTEM	OSPE SE430 - 1
BUILDING FACADE	OSPE SE430 - 2
INSULATION BOARD LAYOUT	OSPE SE430 - 3
OUTSIDE CORNER - INSULATION BOARD LAYOUT	OSPE SE430 - 4
INSULATION BOARD - GROOVE PATTERN	OSPE SE430 - 5
COMPARTMENT SEPARATION	OSPE SE430 - 6
FOUNDATION	OSPE SE430 - 7
TERMINATION AT CONCRETE	OSPE SE430 - 8
HEAD/SILL	OSPE SE430 - 9
JAMB	OSPE SE430 - 10
PARAPET - STEEL FRAMED, METAL COPING	OSPE SE430 - 11
PARAPET - SOLID SUBSTRATE, METAL COPING	OSPE SE430 - 12
SOFFIT/FASCIA INTERSECTION	OSPE SE430 - 13
INSIDE/OUTSIDE CORNERS	OSPE SE430 - 14
OUTSIDE CORNER - HIGH IMPACT	OSPE SE430 - 15
HORIZONTAL EXPANSION JOINT	OSPE SE430 - 16
HORIZONTAL SLIP JOINT	OSPE SE430 - 17
VERTICAL EXPANSION JOINT OPTIONS	OSPE SE430 - 18
STRUCTURAL EXPANSION JOINTS	OSPE SE430 - 19
MINOR PENETRATIONS	OSPE SE430 - 20
MAJOR PENETRATIONS	OSPE SE430 - 21
SIGN ATTACHMENT	OSPE SE430 - 22
AESTHETIC REVEALS	OSPE SE430 - 23
PROJECTING GRAPHICS	OSPE SE430 - 24
RECESSED GRAPHICS	OSPE SE430 - 25
DRYVIT VENT ASSEMBLY™	OSPE SE430 - 26

NOTE:

DRYVIT, TREMCO AND USG MAKES NO REPRESENTATION REGARDING CONFORMITY OF ITS SUGGESTIONS TO MODEL BUILDING CODES, ENGINEERING CRITERIA, SPECIFIC APPLICATIONS, OR PROJECT LOCATIONS. ALL COMPONENTS INDICATED IN ILLUSTRATIONS, AS WELL AS OTHERS THAT MAY BE REQUIRED FOR THE INTEGRITY OF THE SYSTEM SHALL BE DESIGNED, DETAILED, AND ENGINEERED BY REPRESENTATIVES OF THE ARCHITECT, OWNER, OR CONTRACTOR TO BE IN CONFORMANCE WITH MODEL CODES, ARCHITECTURAL, AND ENGINEERING REQUIREMENTS PERTAINING TO SPECIFIC BUILDING PROJECTS.

DRYVIT, TREMCO AND USG MAKE NO WARRANTY, EXPRESSED OR IMPLIED, AS TO THE ARCHITECTURAL DESIGN, ENGINEERING, OR WORKMANSHIP OF PROJECTS UTILIZING DRYVIT SYSTEMS OR PRODUCTS.

THE LIABILITIES OF DRYVIT, TREMCO AND USG SHALL BE AS STATED IN THE DRYVIT STANDARD WARRANTY. CONTACT DRYVIT, TREMCO AND USG FOR A FULL AND COMPLETE COPY OF THE WARRANTY.



Dryvit Technical Support: 800-556-7752

The architecture, engineering, and design of the project using the Dryvit Tremco and USG products are the responsibility of the project's design professional. All products and systems must comply with local building codes and standards. This detail is for general information and guidance only and Dryvit Tremco and USG specifically disclaims any liability for the use of this detail. The project design professional determines, in its sole discretion, whether this detail or a functionally equivalent detail is best suited for the project. This detail is subject to change without notice. Contact Dryvit Tremco and USG to ensure you have the most recent version.

Outsulation® PE Securock® ExoAir 430 System®



Technical Support: 866-209-2404

Detail: Outsulation PE Securock ExoAir 430 System Table of Contents

Drawn by: KAB

Checked by: CB

Scale: NTS

Date: 2/11/2022

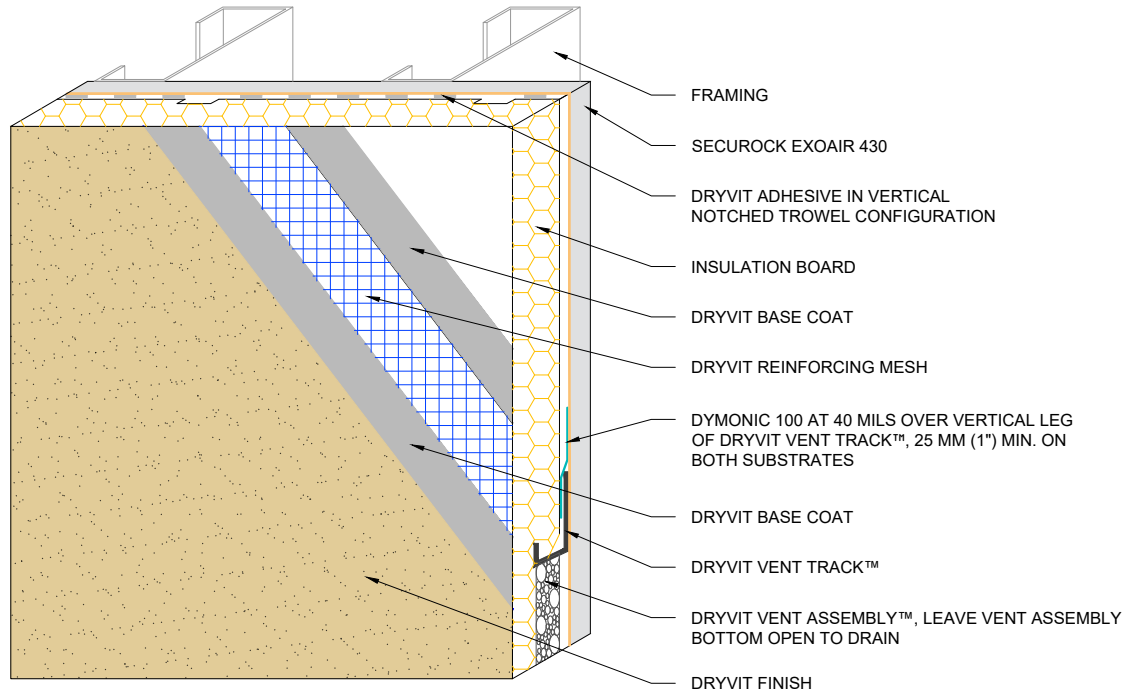
File Name:

OSPE SE430 TOC

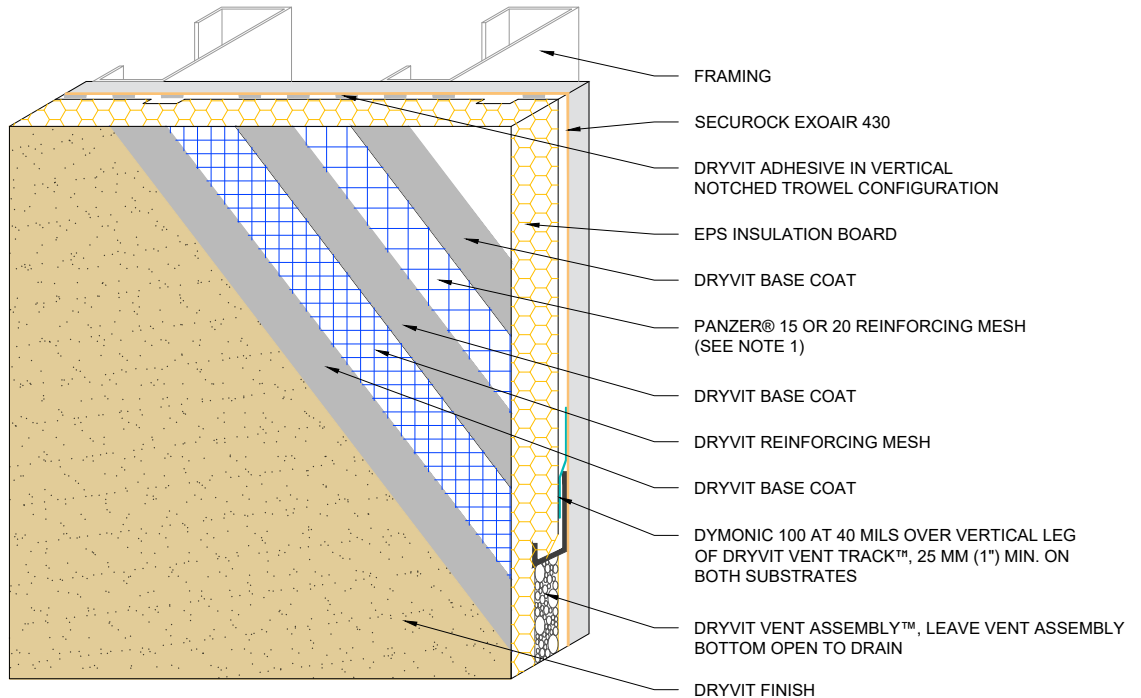


www.tremcocpg.com

EIMA STANDARD IMPACT



EIMA ULTRA-HIGH IMPACT



NOTE:

1. DRYVIT RECOMMENDS THAT GROUND FLOOR APPLICATIONS AND ALL FACADES EXPOSED TO ABNORMAL STRESS, HIGH TRAFFIC, OR DELIBERATE IMPACT HAVE THE BASE COAT REINFORCED WITH DRYVIT PANZER® MESH PRIOR TO DRYVIT REINFORCING MESH. LOCATION OF HIGH IMPACT ZONES SHOULD BE INDICATED ON CONTRACT DRAWINGS.

2. LIGHTLY SAND SURFACE OF DRAINAGE TRACK TO MAXIMIZE ADHESION.



Dryvit Technical Support: 800-556-7752

The architecture, engineering, and design of the project using the Dryvit Tremco and USG products are the responsibility of the project's design professional. All products and systems must comply with local building codes and standards. This detail is for general information and guidance only and Dryvit Tremco and USG specifically disclaims any liability for the use of this detail. The project design professional determines, in its sole discretion, whether this detail or a functionally equivalent detail is best suited for the project. This detail is subject to change without notice. Contact Dryvit Tremco and USG to ensure you have the most recent version.

Outsulation® PE Securock® ExoAir 430 System®



Technical Support: 866-209-2404

Detail: Outsulation PE Securock ExoAir 430 System

Drawn by: KAB

Checked by: CB

Scale: NTS

Date: 2/11/2022

File Name:

OSPE SE430 - 1



www.tremcocpg.com



305 MM (12") DRYVIT
CLOSURE BLOCKS TYP.

152 MM (6") DRYVIT
STARTER STRIP TYP.

152 MM (6") DRYVIT CLOSURE
BLOCKS TYP.

DRYVIT VENT ASSEMBLY™, LEAVE VENT
ASSEMBLY BOTTOM OPEN TO DRAIN

DRYVIT VENT TRACK™ (DRAIN HOLE
LOCATED AT VENT ASSEMBLY)

DRYVIT TRACK (NO DRAIN HOLES)

COMPARTMENT
SEPARATION TYP.

NOTE:
1. COMPARTMENT LOCATIONS DETERMINED PER
ASCE 7-10 AND DRYVIT OUTSULATION PE SYSTEM
SPECIFICATIONS DS844.



Dryvit Technical Support: 800-556-7752

The architecture, engineering, and design of the project using the Dryvit Tremco and USG products are the responsibility of the project's design professional. All products and systems must comply with local building codes and standards. This detail is for general information and guidance only and Dryvit Tremco and USG specifically disclaims any liability for the use of this detail. The project design professional determines, in its sole discretion, whether this detail or a functionally equivalent detail is best suited for the project. This detail is subject to change without notice. Contact Dryvit Tremco and USG to ensure you have the most recent version.

Outsulation® PE Securock® ExoAir 430 System®



Technical Support: 866-209-2404

Detail: Building Facade

Drawn by: KAB

Checked by: CB

Scale: NTS

Date: 2/11/2022

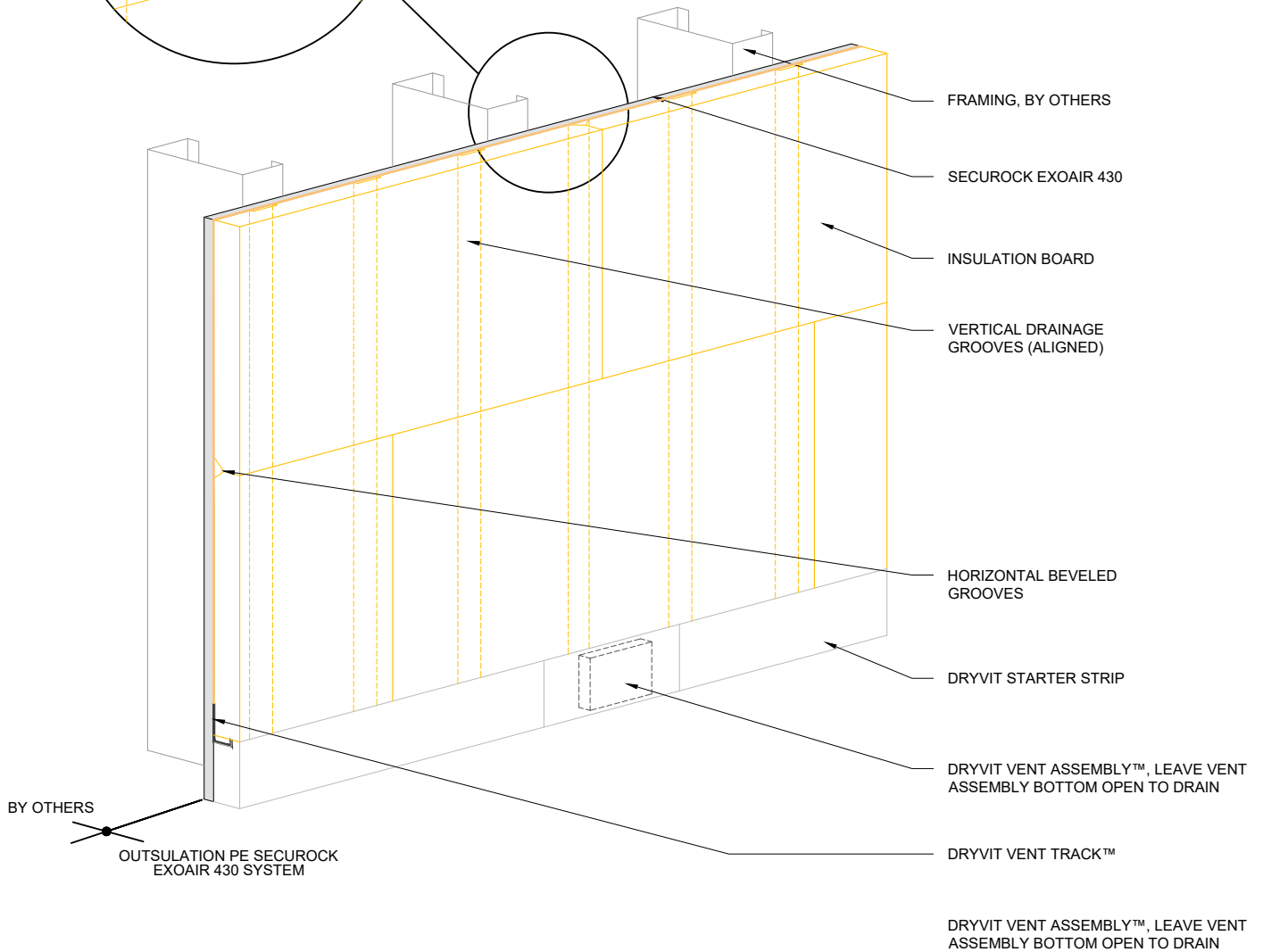
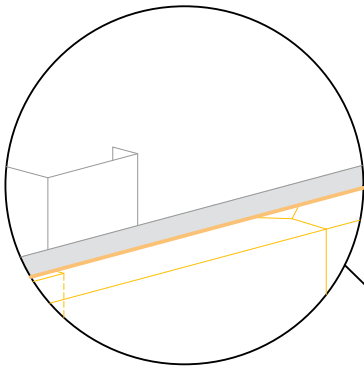
File Name:

OSPE SE430 - 2



Construction Products Group

www.tremcocpg.com



Dryvit Technical Support: 800-556-7752

The architecture, engineering, and design of the project using the Dryvit Tremco and USG products are the responsibility of the project's design professional. All products and systems must comply with local building codes and standards. This detail is for general information and guidance only and Dryvit Tremco and USG specifically disclaims any liability for the use of this detail. The project design professional determines, in its sole discretion, whether this detail or a functionally equivalent detail is best suited for the project. This detail is subject to change without notice. Contact Dryvit Tremco and USG to ensure you have the most recent version.

Outsulation® PE Securock® ExoAir 430 System®



Technical Support: 866-209-2404

Detail: Insulation Board Layout

Drawn by: KAB

Checked by: CB

Scale: NTS

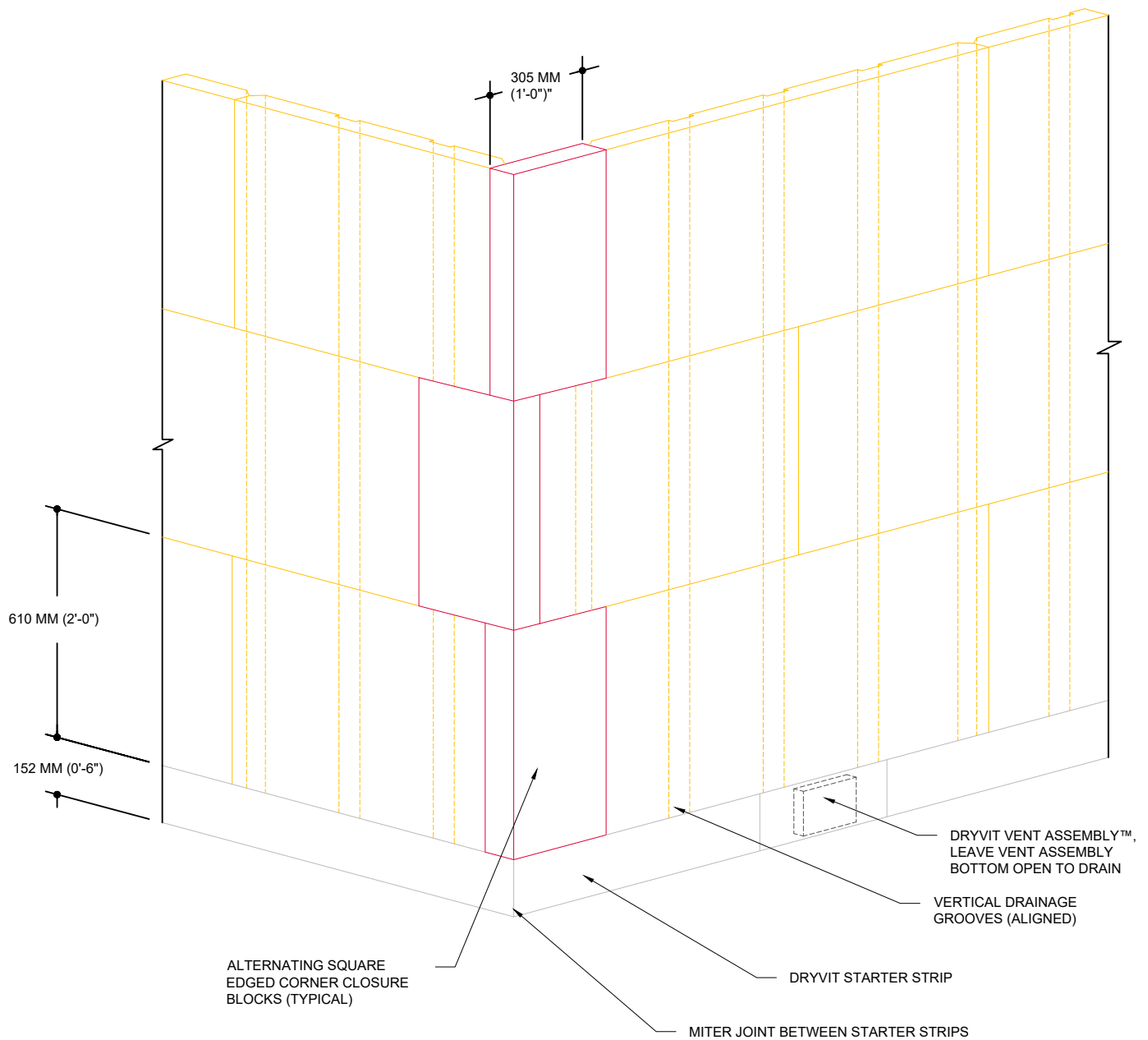
Date: 2/11/2022

File Name:

OSPE SE430 - 3



www.tremcocpg.com



NOTE:
1. INSTALL SQUARE EDGED CORNER CLOSURE
BLOCKS ON ALTERNATING SIDES OF OUTSIDE
CORNERS.



Dryvit Technical Support: 800-556-7752

The architecture, engineering, and design of the project using the Dryvit Tremco and USG products are the responsibility of the project's design professional. All products and systems must comply with local building codes and standards. This detail is for general information and guidance only and Dryvit Tremco and USG specifically disclaims any liability for the use of this detail. The project design professional determines, in its sole discretion, whether this detail or a functionally equivalent detail is best suited for the project. This detail is subject to change without notice. Contact Dryvit Tremco and USG to ensure you have the most recent version.

Outsulation® PE Securock® ExoAir 430 System®



Technical Support: 866-209-2404

Detail: Outside Corner - Insulation Board

Drawn by: KAB

Checked by: CB

Scale: NTS

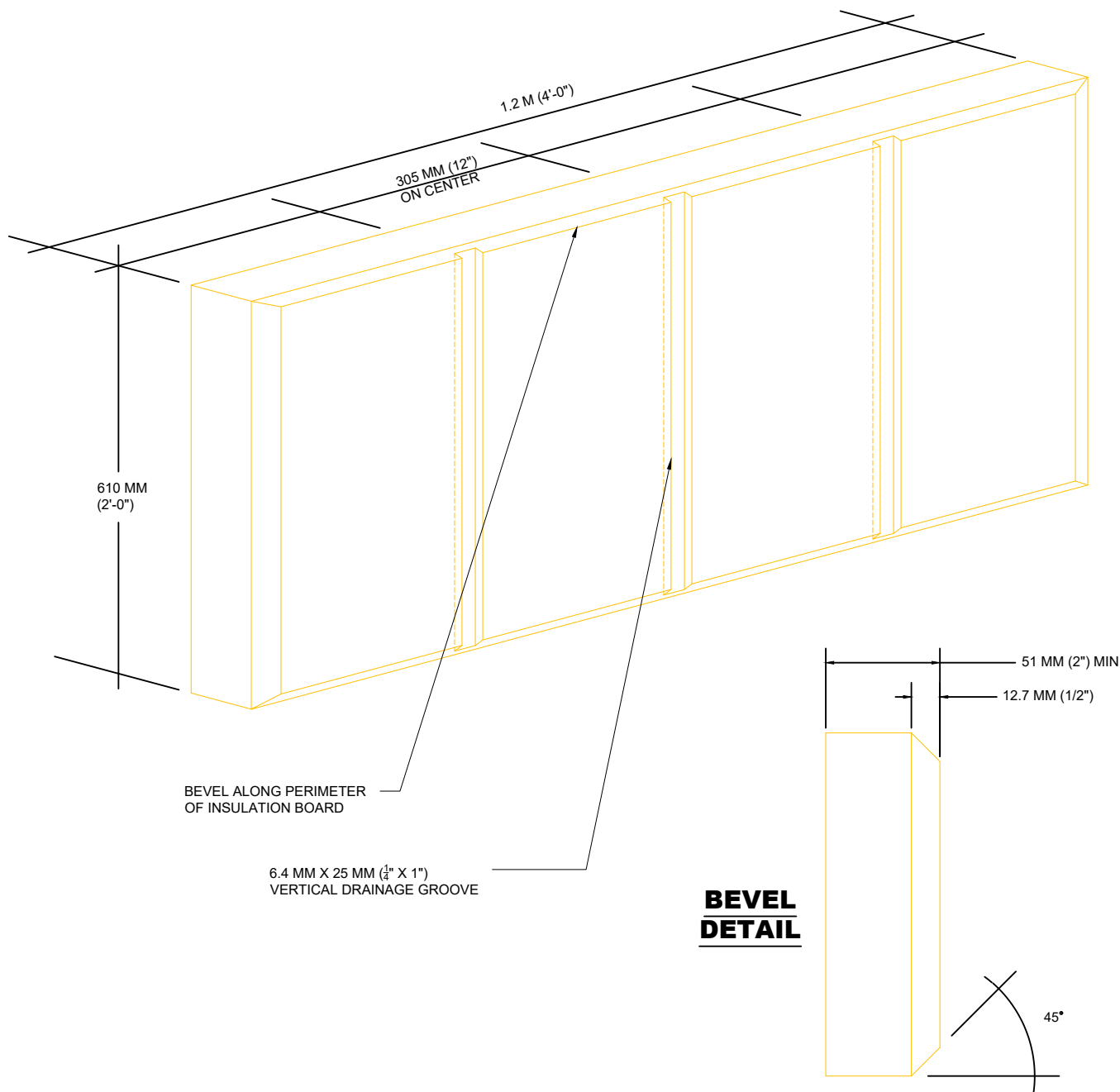
Date: 2/11/2022

File Name:

OSPE SE430 - 4



www.tremcocpg.com



Dryvit Technical Support: 800-556-7752

The architecture, engineering, and design of the project using the Dryvit Tremco and USG products are the responsibility of the project's design professional. All products and systems must comply with local building codes and standards. This detail is for general information and guidance only and Dryvit Tremco and USG specifically disclaims any liability for the use of this detail. The project design professional determines, in its sole discretion, whether this detail or a functionally equivalent detail is best suited for the project. This detail is subject to change without notice. Contact Dryvit Tremco and USG to ensure you have the most recent version.

Outsulation® PE Securock® ExoAir 430 System®



Technical Support: 866-209-2404

Detail: Insulation Board - Groove Pattern

Drawn by: KAB

Checked by: CB

Scale: NTS

Date: 2/11/2022

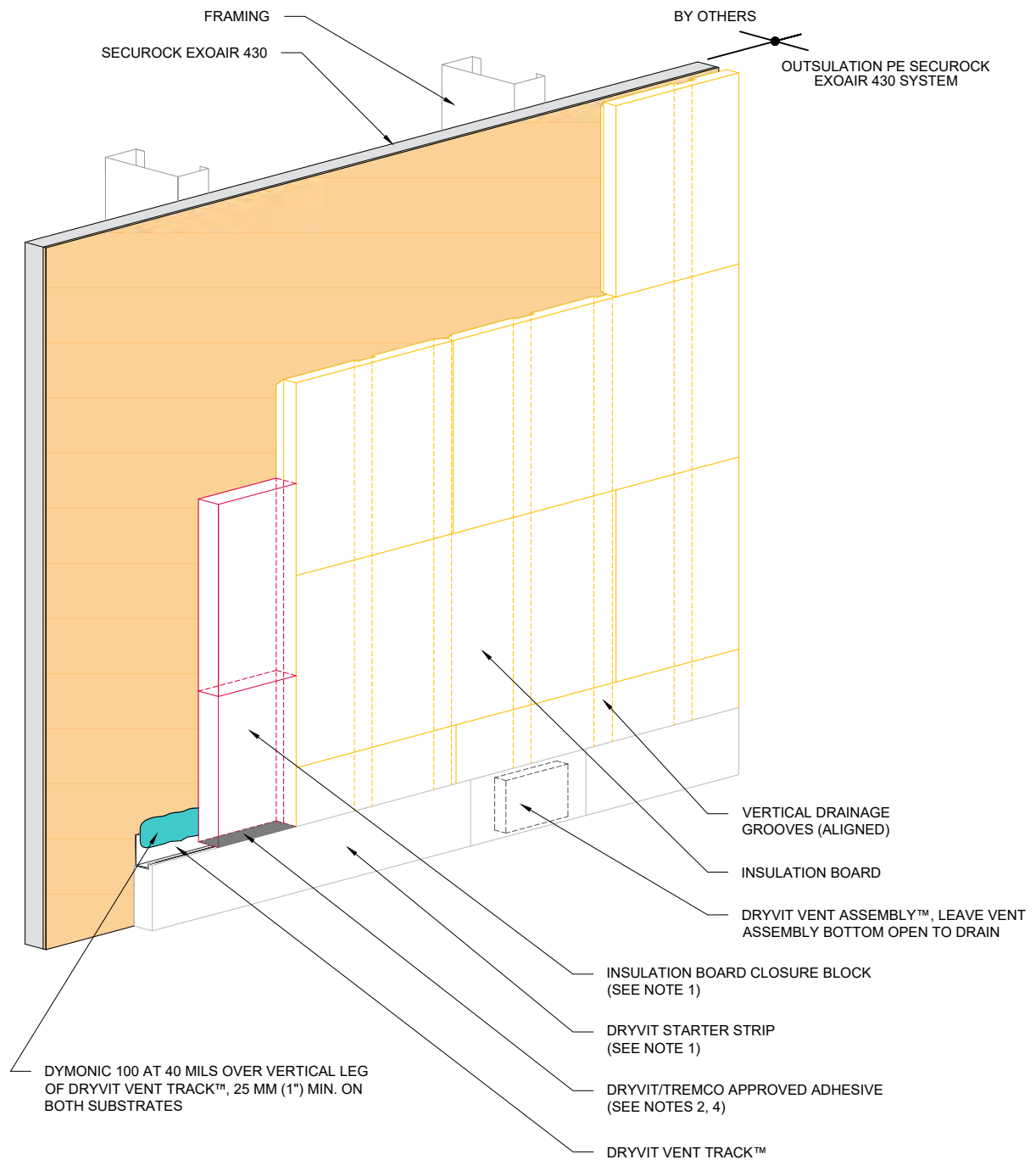
File Name:

OSPE SE430 - 5



Construction Products Group

www.tremcocpg.com



NOTE:

1. ADHERE CLOSURE BLOCKS AND STARTER STRIPS USING "RIBBON & DAB" ADHESIVE PATTERN TO PROVIDE COMPARTMENT CLOSURE.

2. FILL DRYVIT VENT TRACK AT CLOSURE BLOCK LOCATION WITH AP ADHESIVE PRIOR TO SETTING CLOSURE BLOCK, TO PROVIDE COMPARTMENT CLOSURE.

3. LIGHTLY SAND SURFACE OF DRAINAGE TRACK TO MAXIMIZE ADHESION.

4. REFERENCE DS920 FOR APPROVED SEALANTS.



Dryvit Technical Support: 800-556-7752

The architecture, engineering, and design of the project using the Dryvit Tremco and USG products are the responsibility of the project's design professional. All products and systems must comply with local building codes and standards. This detail is for general information and guidance only and Dryvit Tremco and USG specifically disclaims any liability for the use of this detail. The project design professional determines, in its sole discretion, whether this detail or a functionally equivalent detail is best suited for the project. This detail is subject to change without notice. Contact Dryvit Tremco and USG to ensure you have the most recent version.

Outsulation® PE Securock® ExoAir 430 System®



Technical Support: 866-209-2404

Detail: Compartment Separation

Drawn by: KAB

Checked by: CB

Scale: NTS

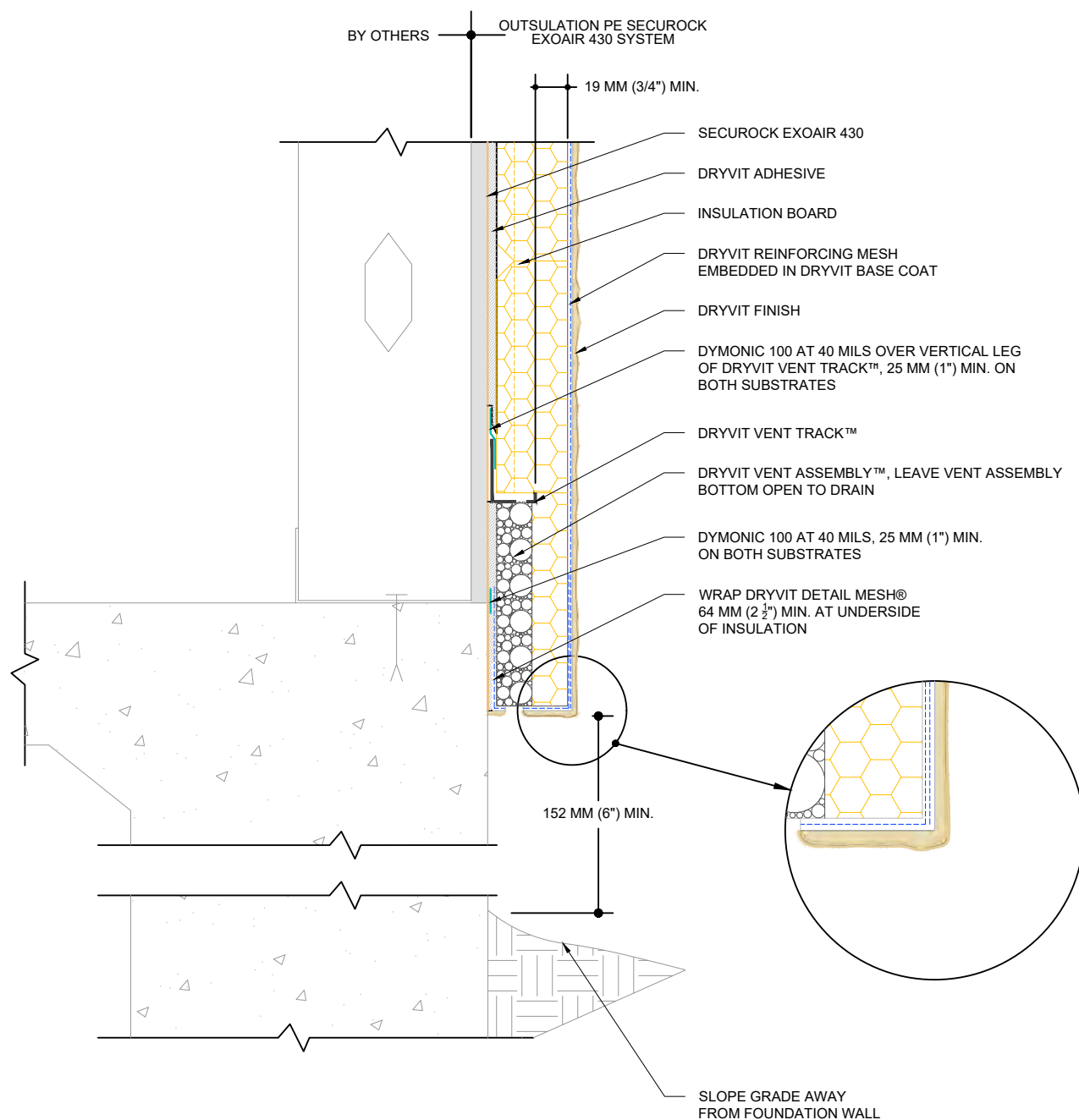
Date: 2/11/2022

File Name:

OSPE SE430 - 6



www.tremcocpg.com



NOTE:

1. DRYVIT RECOMMENDS THAT GROUND FLOOR APPLICATIONS AND ALL FACADES EXPOSED TO ABNORMAL STRESS, HIGH TRAFFIC, OR DELIBERATE IMPACT HAVE THE BASE COAT REINFORCED WITH PANZER® MESH PRIOR TO STANDARD™ OR STANDARD PLUS™ MESH. LOCATION OF HIGH IMPACT ZONES SHOULD BE INDICATED ON CONTRACT DRAWINGS.

2. DRYVIT VENT ASSEMBLY IS INSTALLED ONLY AT PUNCHOUT IN DRYVIT VENT TRACK.

3. EXPANSION JOINT IS REQUIRED ALONG TOP OF FOUNDATION IF 610 MM (2'-0") DIMENSION IS EXCEEDED.

4. LIGHTLY SAND SURFACE OF DRAINAGE TRACK TO MAXIMIZE ADHESION.



Dryvit Technical Support: 866-209-2404

The architecture, engineering, and design of the project using the Dryvit Tremco and USG products are the responsibility of the project's design professional. All products and systems must comply with local building codes and standards. This detail is for general information and guidance only and Dryvit Tremco and USG specifically disclaims any liability for the use of this detail. The project design professional determines, in its sole discretion, whether this detail or a functionally equivalent detail is best suited for the project. This detail is subject to change without notice. Contact Dryvit Tremco and USG to ensure you have the most recent version.

Outsulation® PE Securock® ExoAir 430 System®



Technical Support: 866-209-2404

Detail: Foundation

Drawn by: KAB

Checked by: CB

Scale: NTS

Date: 2/11/2022

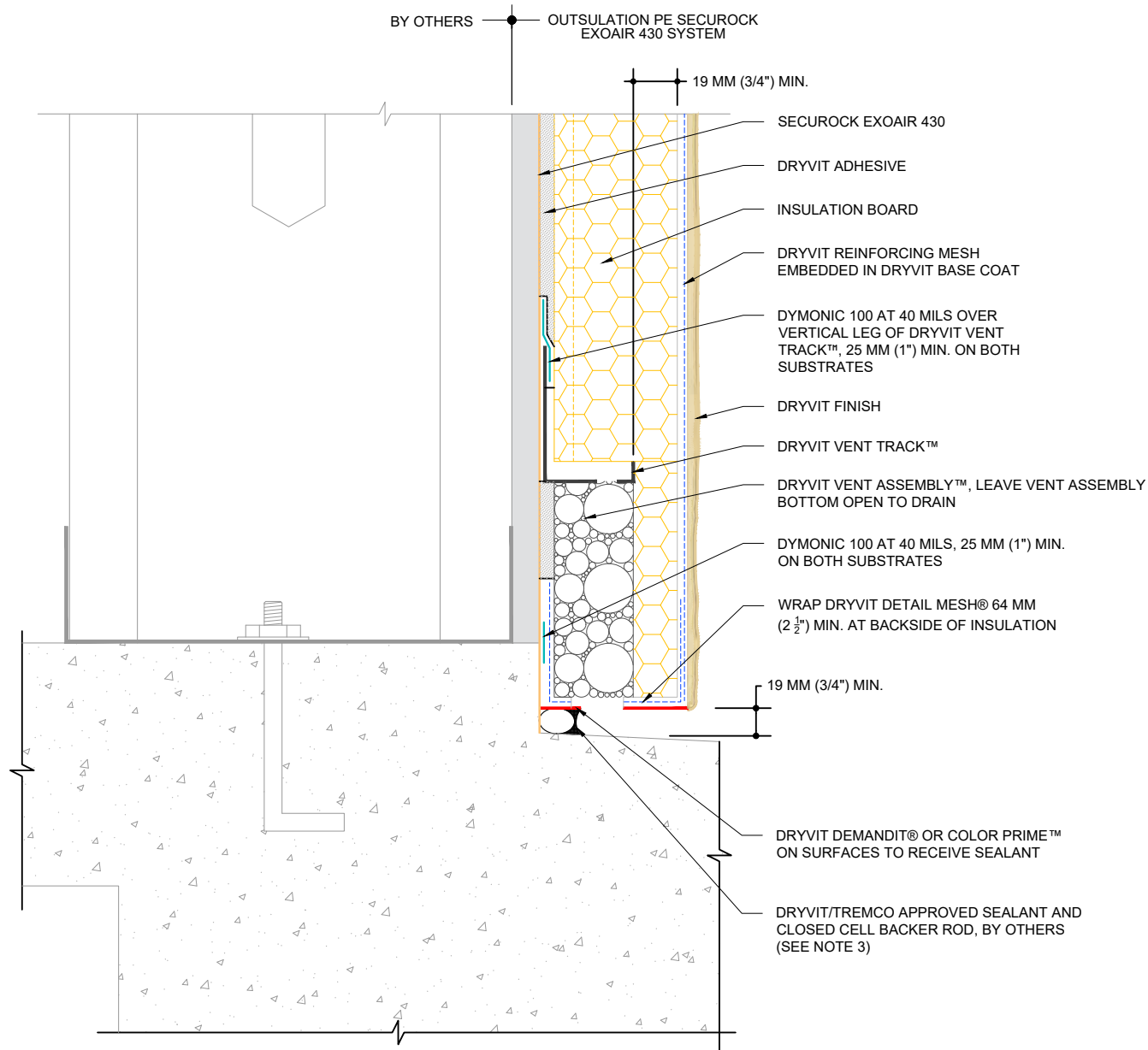
File Name:

OSPE SE430 - 7



Construction Products Group

www.tremcocpg.com



NOTE:

1. DRYVIT RECOMMENDS THAT GROUND FLOOR APPLICATIONS AND ALL FACADES EXPOSED TO ABNORMAL STRESS, HIGH TRAFFIC, OR DELIBERATE IMPACT HAVE THE BASE COAT REINFORCED WITH PANZER® MESH PRIOR TO STANDARD™ OR STANDARD PLUS™ MESH. LOCATION OF HIGH IMPACT ZONES SHOULD BE INDICATED ON CONTRACT DRAWINGS.

2. LIGHTLY SAND SURFACE OF DRAINAGE TRACK TO MAXIMIZE ADHESION.

3. REFERENCE DS920 FOR APPROVED SEALANTS.



Dryvit Technical Support: 800-556-7752

The architecture, engineering, and design of the project using the Dryvit Tremco and USG products are the responsibility of the project's design professional. All products and systems must comply with local building codes and standards. This detail is for general information and guidance only and Dryvit Tremco and USG specifically disclaims any liability for the use of this detail. The project design professional determines, in its sole discretion, whether this detail or a functionally equivalent detail is best suited for the project. This detail is subject to change without notice. Contact Dryvit Tremco and USG to ensure you have the most recent version.

Outsulation® PE Securock® ExoAir 430 System®



Technical Support: 866-209-2404

Detail: Termination at Concrete

Drawn by: KAB

Checked by: CB

Scale: NTS

Date: 2/11/2022

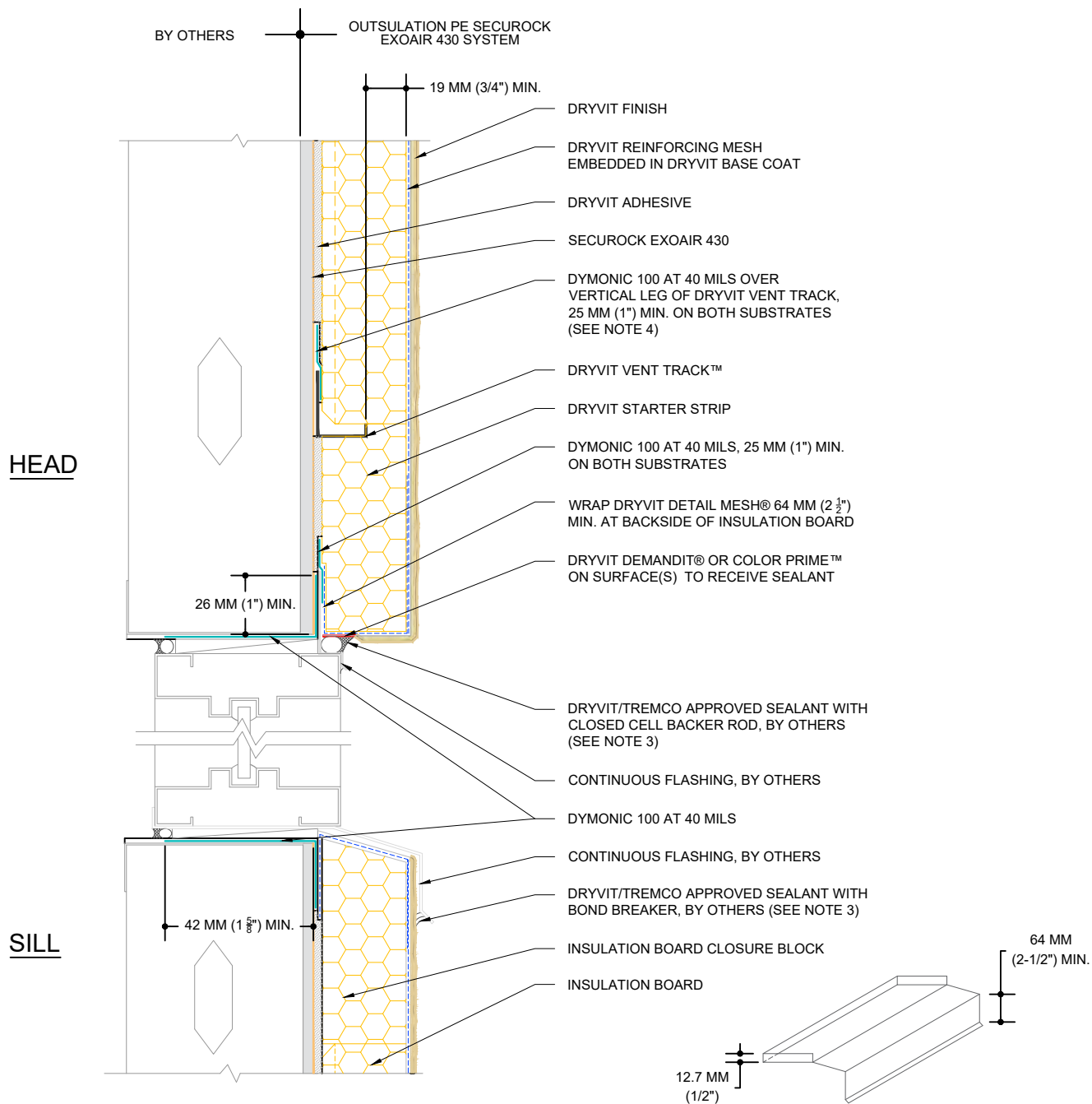
File Name:

OSPE SE430 - 8



Construction Products Group

www.tremcocpg.com



SILL PAN FLASHING

NOTE:

1. DRYVIT RECOMMENDS THAT GROUND FLOOR APPLICATIONS AND ALL FACADES EXPOSED TO ABNORMAL STRESS, HIGH TRAFFIC, OR DELIBERATE IMPACT HAVE THE BASE COAT REINFORCED WITH PANZER® MESH PRIOR TO STANDARD™ OR STANDARD PLUS™ MESH. LOCATION OF HIGH IMPACT ZONES SHOULD BE INDICATED ON CONTRACT DRAWINGS.

2. FOR CONTINUOUS WINDOWS, USE CLOSURE BLOCKS TO TERMINATE SYSTEM AT SILL.

3. REFERENCE DS920 FOR APPROVED SEALANTS.

4. LIGHTLY SAND SURFACE OF TRACK TO MAXIMIZE ADHESION.



Dryvit Technical Support: 800-556-7752

The architecture, engineering, and design of the project using the Dryvit Tremco and USG products are the responsibility of the project's design professional. All products and systems must comply with local building codes and standards. This detail is for general information and guidance only and Dryvit Tremco and USG specifically disclaims any liability for the use of this detail. The project design professional determines, in its sole discretion, whether this detail or a functionally equivalent detail is best suited for the project. This detail is subject to change without notice. Contact Dryvit Tremco and USG to ensure you have the most recent version.

Outsulation® PE Securock® ExoAir 430 System®



Technical Support: 866-209-2404

Detail: Head/Sill

Drawn by: KAB

Checked by: CB

Scale: NTS

Date: 2/11/2022

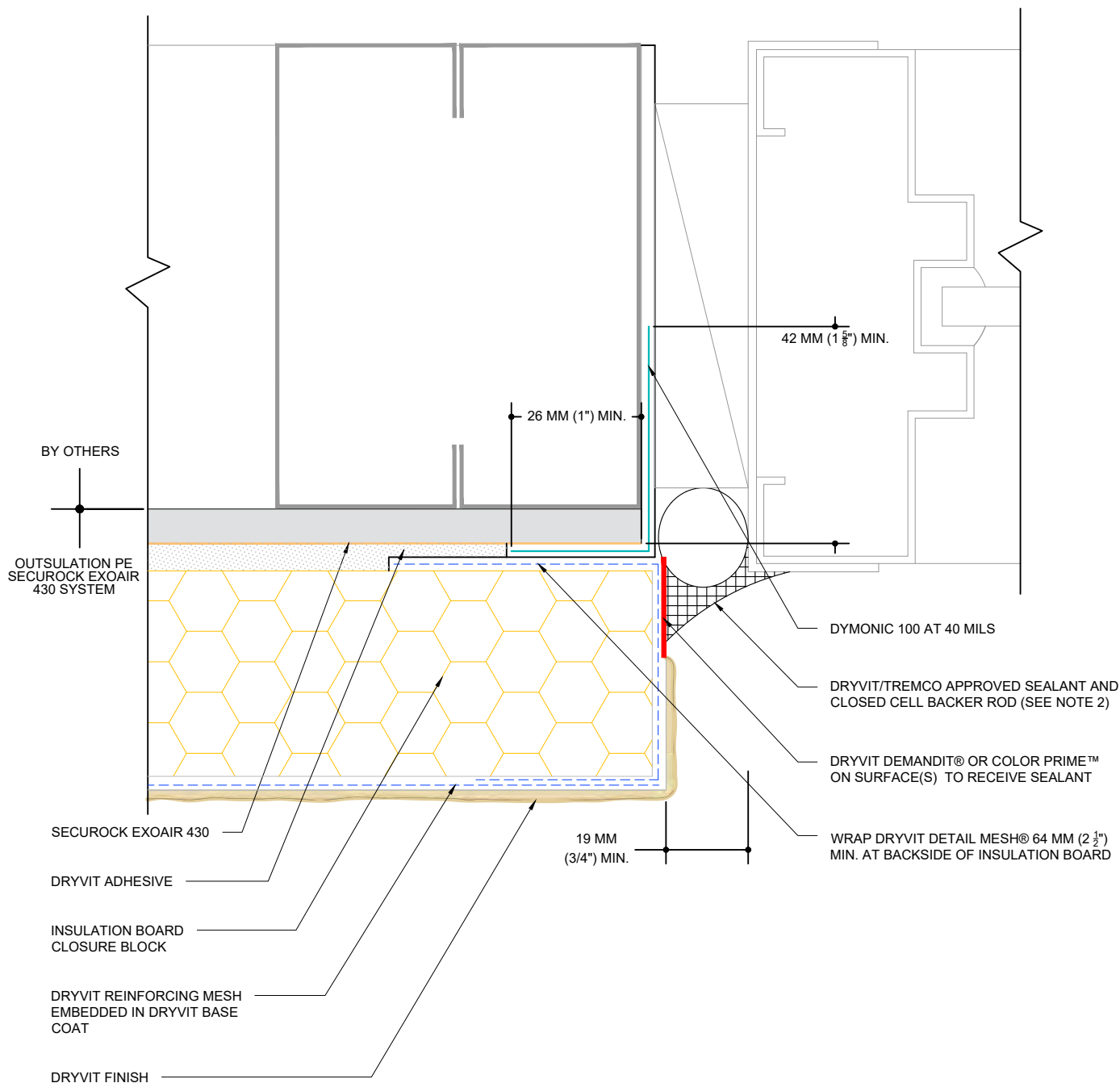
File Name:

OSPE SE430 - 9



Construction Products Group

www.tremcocpg.com



NOTE:

1. DRYVIT RECOMMENDS THAT GROUND FLOOR APPLICATIONS AND ALL FACADES EXPOSED TO ABNORMAL STRESS, HIGH TRAFFIC, OR DELIBERATE IMPACT HAVE THE BASE COAT REINFORCED WITH PANZER® MESH PRIOR TO STANDARD™ OR STANDARD PLUS™ MESH. LOCATION OF HIGH IMPACT ZONES SHOULD BE INDICATED ON CONTRACT DRAWINGS.

2. REFERENCE DS920 FOR APPROVED SEALANTS.



Dryvit Technical Support: 800-556-7752

The architecture, engineering, and design of the project using the Dryvit Tremco and USG products are the responsibility of the project's design professional. All products and systems must comply with local building codes and standards. This detail is for general information and guidance only and Dryvit Tremco and USG specifically disclaims any liability for the use of this detail. The project design professional determines, in its sole discretion, whether this detail or a functionally equivalent detail is best suited for the project. This detail is subject to change without notice. Contact Dryvit Tremco and USG to ensure you have the most recent version.

Outsulation® PE Securock® ExoAir 430 System®



Technical Support: 866-209-2404

Detail: Jamb

Drawn by: KAB

Checked by: CB

Scale: NTS

Date: 2/11/2022

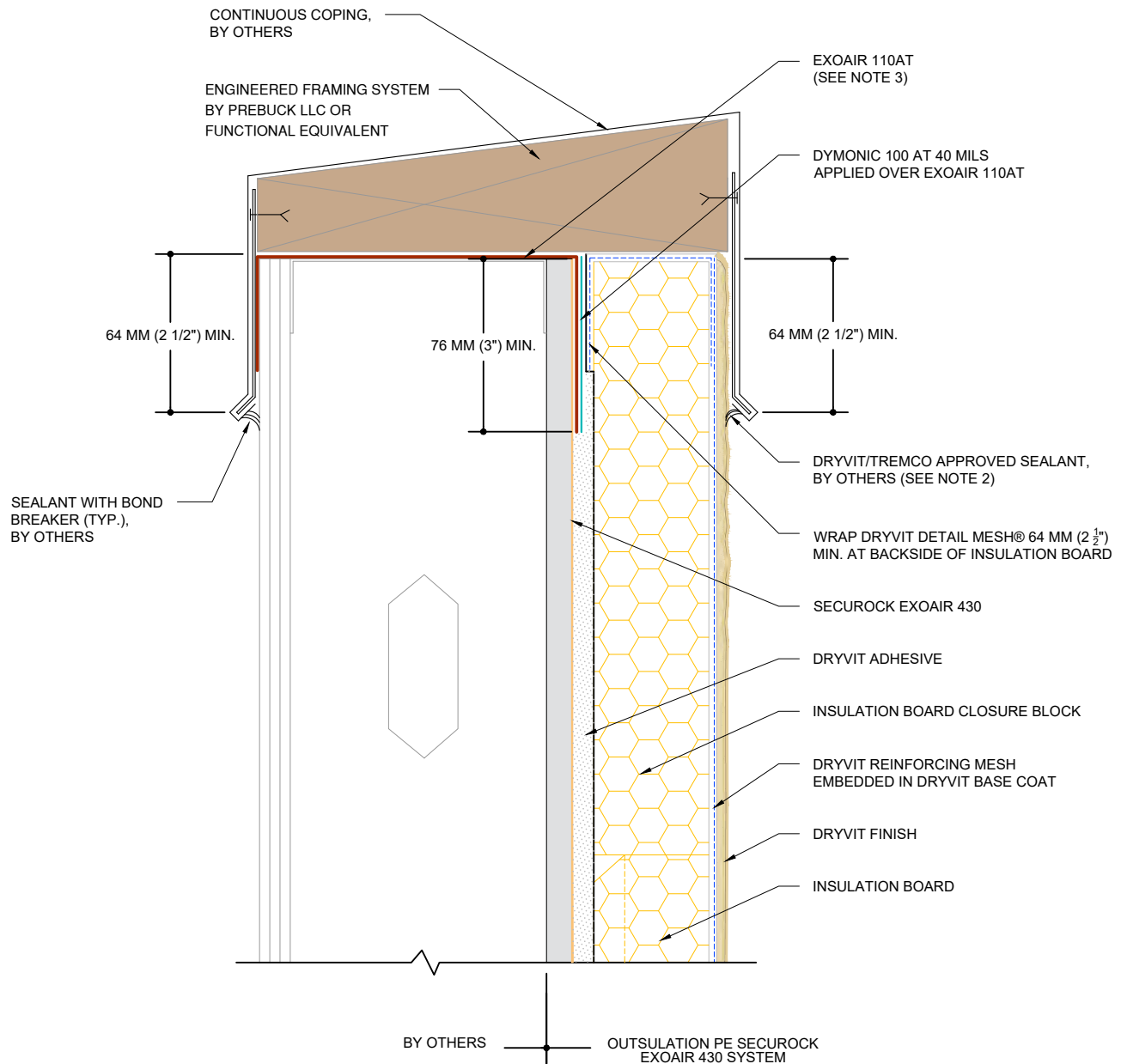
File Name:

OSPE SE430 - 10



Construction Products Group

www.tremcocpg.com



NOTE:

1. DRYVIT RECOMMENDS THAT GROUND FLOOR APPLICATIONS AND ALL FACADES EXPOSED TO ABNORMAL STRESS, HIGH TRAFFIC, OR DELIBERATE IMPACT HAVE THE BASE COAT REINFORCED WITH PANZER® MESH PRIOR TO STANDARD™ OR STANDARD PLUS™ MESH. LOCATION OF HIGH IMPACT ZONES SHOULD BE INDICATED ON CONTRACT DRAWINGS.

2. REFERENCE DS920 FOR APPROVED SEALANTS.

3. DYMONIC 100 AT 40 MILS MAY BE USED IN LIEU OF EXOAIR 110AT.



Dryvit Technical Support: 800-556-7752

The architecture, engineering, and design of the project using the Dryvit Tremco and USG products are the responsibility of the project's design professional. All products and systems must comply with local building codes and standards. This detail is for general information and guidance only and Dryvit Tremco and USG specifically disclaims any liability for the use of this detail. The project design professional determines, in its sole discretion, whether this detail or a functionally equivalent detail is best suited for the project. This detail is subject to change without notice. Contact Dryvit Tremco and USG to ensure you have the most recent version.

Outsulation® PE Securock® ExoAir 430 System®



Technical Support: 866-209-2404

Detail: Parapet - Steel Framed, Metal Coping

Drawn by: KAB

Checked by: CB

Scale: NTS

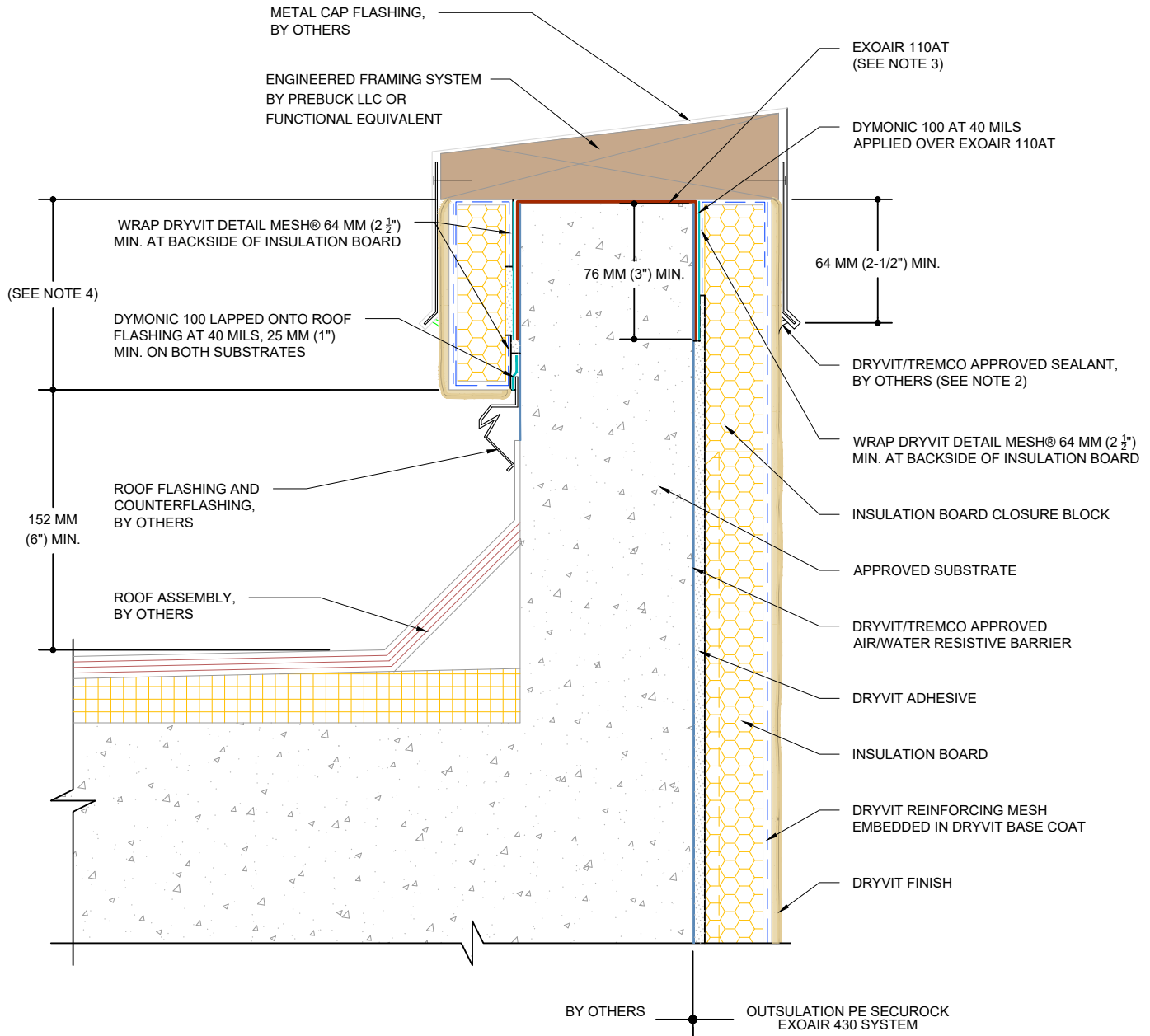
Date: 2/11/2022

File Name:

OSPE SE430 - 11



www.tremcocpg.com



NOTE:

1. DRYVIT RECOMMENDS THAT GROUND FLOOR APPLICATIONS AND ALL FACADES EXPOSED TO ABNORMAL STRESS, HIGH TRAFFIC, OR DELIBERATE IMPACT HAVE THE BASE COAT REINFORCED WITH PANZER® MESH PRIOR TO STANDARD™ OR STANDARD PLUS™ MESH. LOCATION OF HIGH IMPACT ZONES SHOULD BE INDICATED ON CONTRACT DRAWINGS.

2. REFERENCE DS920 FOR APPROVED SEALANTS.

3. DYMONIC 100 AT 40 MILS MAY BE USED IN LIEU OF EXOAIR 110AT.

4. DIMENSIONS GREATER THAN 600 MM (2'-0") REQUIRE SYSTEM CONFIGURATION SIMILAR TO WALL FACE.



Dryvit Technical Support: 800-556-7752

The architecture, engineering, and design of the project using the Dryvit Tremco and USG products are the responsibility of the project's design professional. All products and systems must comply with local building codes and standards. This detail is for general information and guidance only and Dryvit Tremco and USG specifically disclaims any liability for the use of this detail. The project design professional determines, in its sole discretion, whether this detail or a functionally equivalent detail is best suited for the project. This detail is subject to change without notice. Contact Dryvit Tremco and USG to ensure you have the most recent version.

Outsulation® PE Securock® ExoAir 430 System®



Technical Support: 866-209-2404

Detail: Parapet - Solid Substrate, Metal Coping

Drawn by: KAB

Checked by: CB

Scale: NTS

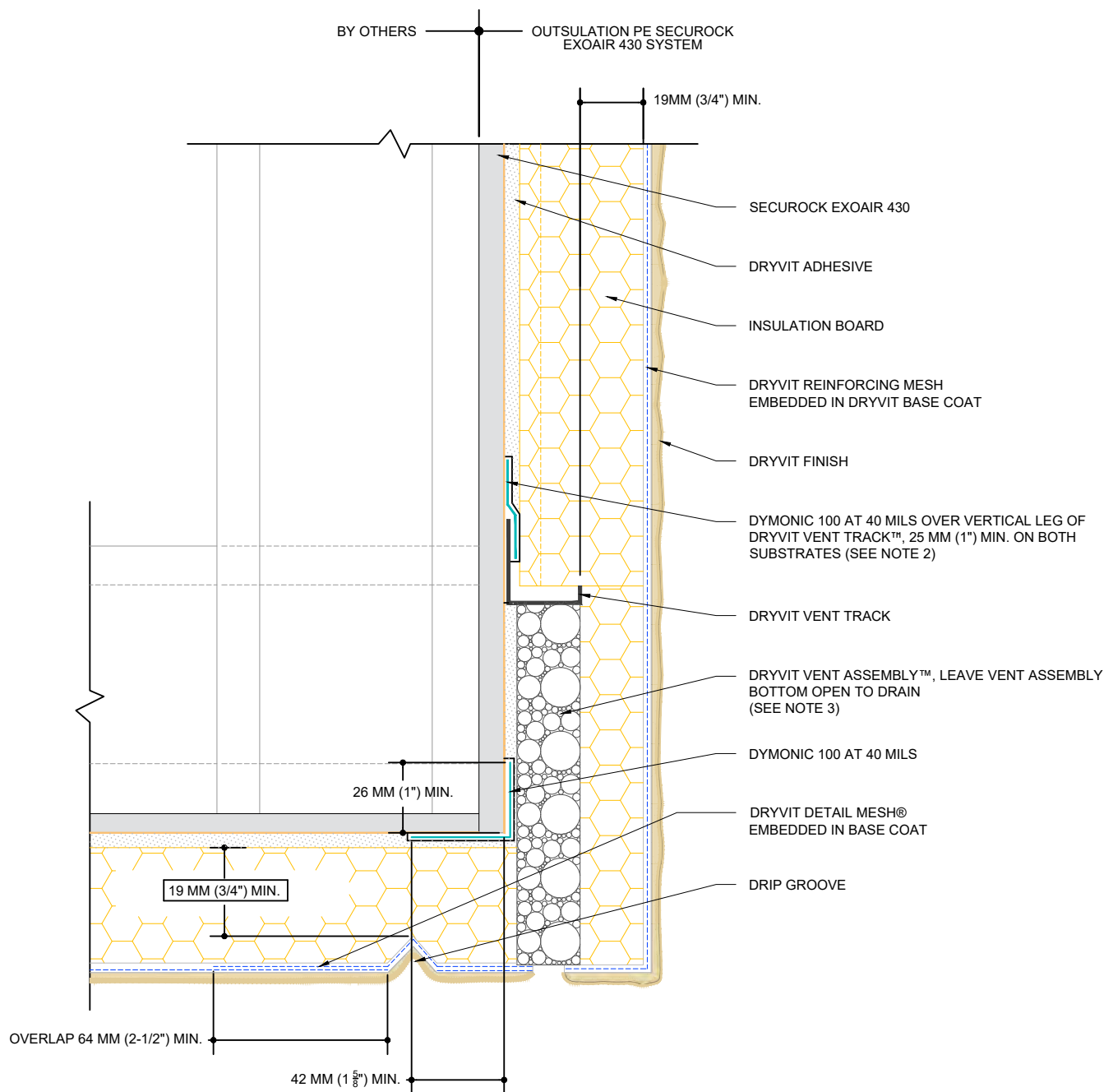
Date: 2/11/2022

File Name:

OSPE SE430 - 12



www.tremcocpg.com



NOTE:

1. DRYVIT RECOMMENDS THAT GROUND FLOOR APPLICATIONS AND ALL FACADES EXPOSED TO ABNORMAL STRESS, HIGH TRAFFIC, OR DELIBERATE IMPACT HAVE THE BASE COAT REINFORCED WITH PANZER® MESH PRIOR TO STANDARD™ OR STANDARD PLUS™ MESH. LOCATION OF HIGH IMPACT ZONES SHOULD BE INDICATED ON CONTRACT DRAWINGS.

2. LIGHTLY SAND SURFACE OF TRACK TO MAXIMIZE ADHESION.

3. DRYVIT VENT ASSEMBLY IS INSTALLED ONLY AT PUNCHOUT IN DRYVIT VENT TRACK.



Dryvit Technical Support: 866-556-7752

The architecture, engineering, and design of the project using the Dryvit Tremco and USG products are the responsibility of the project's design professional. All products and systems must comply with local building codes and standards. This detail is for general information and guidance only and Dryvit Tremco and USG specifically disclaims any liability for the use of this detail. The project design professional determines, in its sole discretion, whether this detail or a functionally equivalent detail is best suited for the project. This detail is subject to change without notice. Contact Dryvit Tremco and USG to ensure you have the most recent version.

Outsulation® PE Securock® ExoAir 430 System®



Technical Support: 866-209-2404

Detail: Soffit/Fascia Intersection

Drawn by: KAB

Checked by: CB

Scale: NTS

Date: 2/11/2022

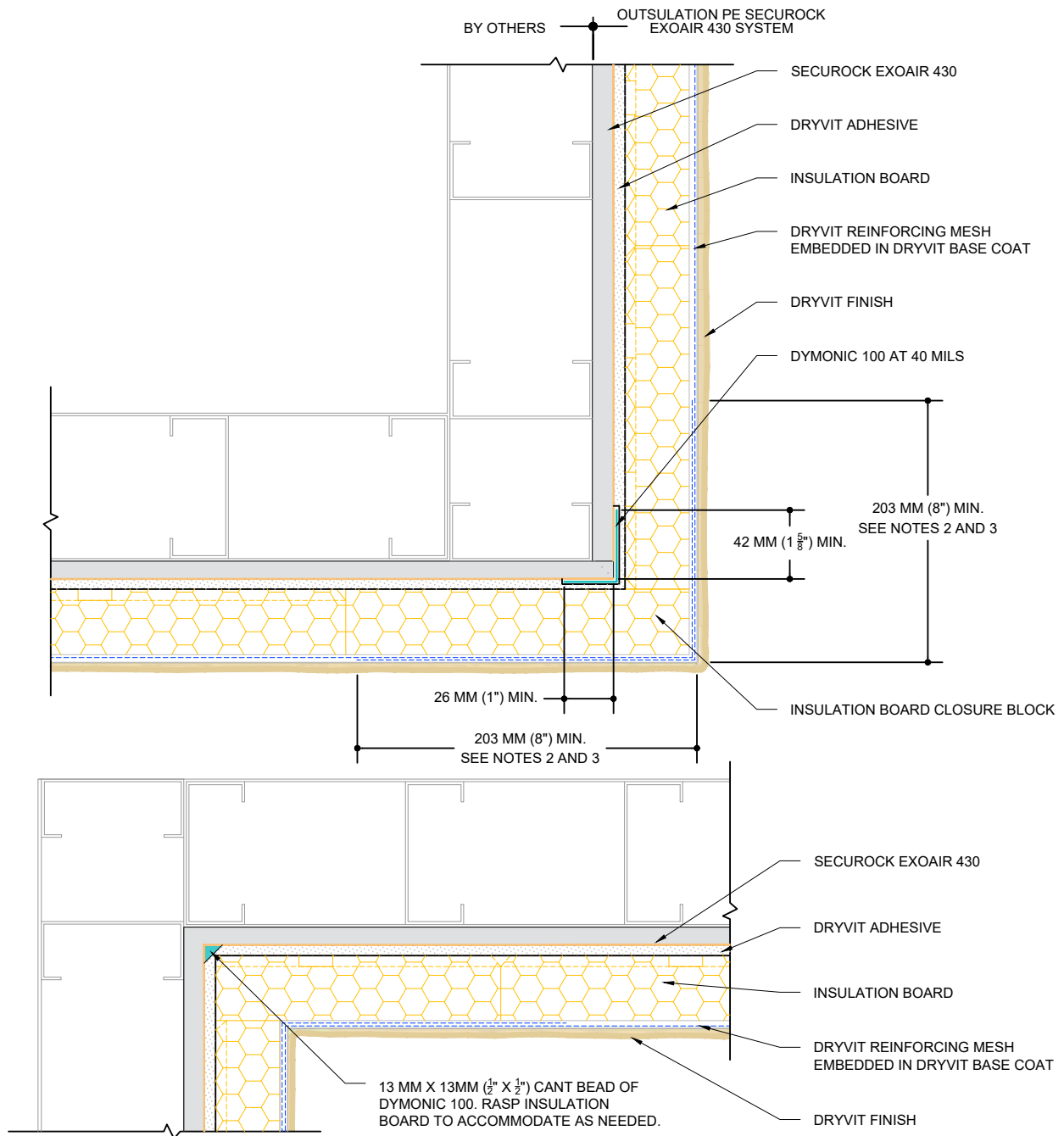
File Name:

OSPE SE430 - 13



Construction Products Group

www.tremcocpg.com



NOTE:

1. DRYVIT RECOMMENDS THAT GROUND FLOOR APPLICATIONS AND ALL FACADES EXPOSED TO ABNORMAL STRESS, HIGH TRAFFIC, OR DELIBERATE IMPACT HAVE THE BASE COAT REINFORCED WITH PANZER® MESH PRIOR TO STANDARD™ OR STANDARD PLUS™ MESH. LOCATION OF HIGH IMPACT ZONES SHOULD BE INDICATED ON CONTRACT DRAWINGS.

2. DOUBLE WRAP OUTSIDE AND INSIDE CORNERS WITH REINFORCING MESH OR USE CORNER MESH.

3. DO NOT LAP REINFORCING MESH WITHIN 203 MM (8\") OF A CORNER.



Dryvit Technical Support: 800-556-7752

The architecture, engineering, and design of the project using the Dryvit Tremco and USG products are the responsibility of the project's design professional. All products and systems must comply with local building codes and standards. This detail is for general information and guidance only and Dryvit Tremco and USG specifically disclaims any liability for the use of this detail. The project design professional determines, in its sole discretion, whether this detail or a functionally equivalent detail is best suited for the project. This detail is subject to change without notice. Contact Dryvit Tremco and USG to ensure you have the most recent version.

Outsulation® PE Securock® ExoAir 430 System®



Technical Support: 866-209-2404

Detail: Inside/Outside Corners

Drawn by: KAB

Checked by: CB

Scale: NTS

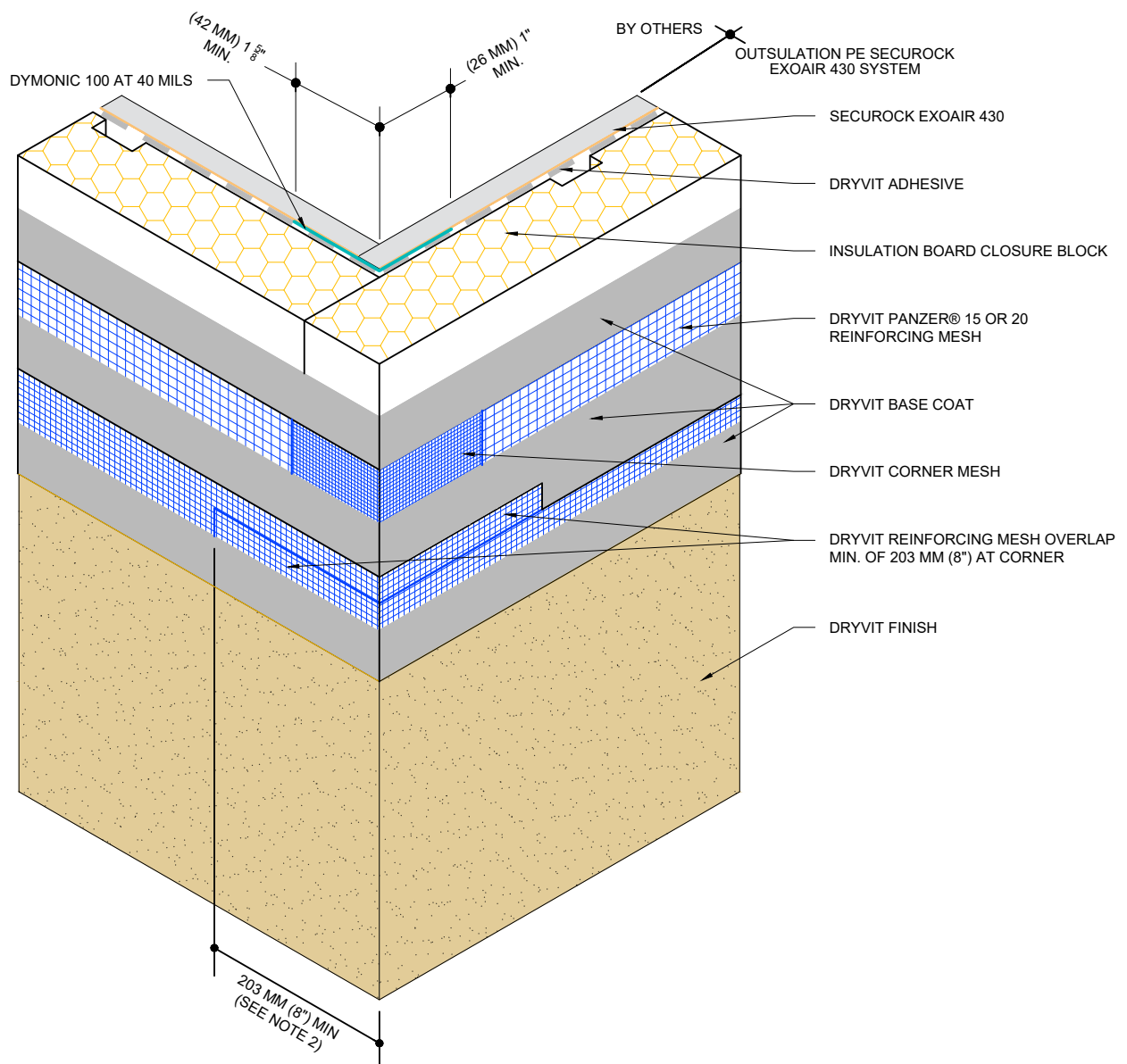
Date: 2/11/2022

File Name:

OSPE SE430 - 14



www.tremcocpg.com



- NOTE:
1. DRYVIT RECOMMENDS THAT GROUND FLOOR APPLICATIONS AND ALL FACADES EXPOSED TO ABNORMAL STRESS, HIGH TRAFFIC, OR DELIBERATE IMPACT HAVE THE BASE COAT REINFORCED WITH PANZER® MESH PRIOR TO STANDARD™ OR STANDARD PLUS™ MESH. LOCATION OF HIGH IMPACT ZONES SHOULD BE INDICATED ON CONTRACT DRAWINGS.
 2. DO NOT LAP REINFORCING MESH WITHIN 203 MM (8") OF A CORNER.



The architecture, engineering, and design of the project using the Dryvit Tremco and USG products are the responsibility of the project's design professional. All products and systems must comply with local building codes and standards. This detail is for general information and guidance only and Dryvit Tremco and USG specifically disclaims any liability for the use of this detail. The project design professional determines, in its sole discretion, whether this detail or a functionally equivalent detail is best suited for the project. This detail is subject to change without notice. Contact Dryvit Tremco and USG to ensure you have the most recent version.

Outsulation® PE Securock® ExoAir 430 System®



Detail: Outside Corner - High Impact

Drawn by: KAB

Checked by: CB

Scale: NTS

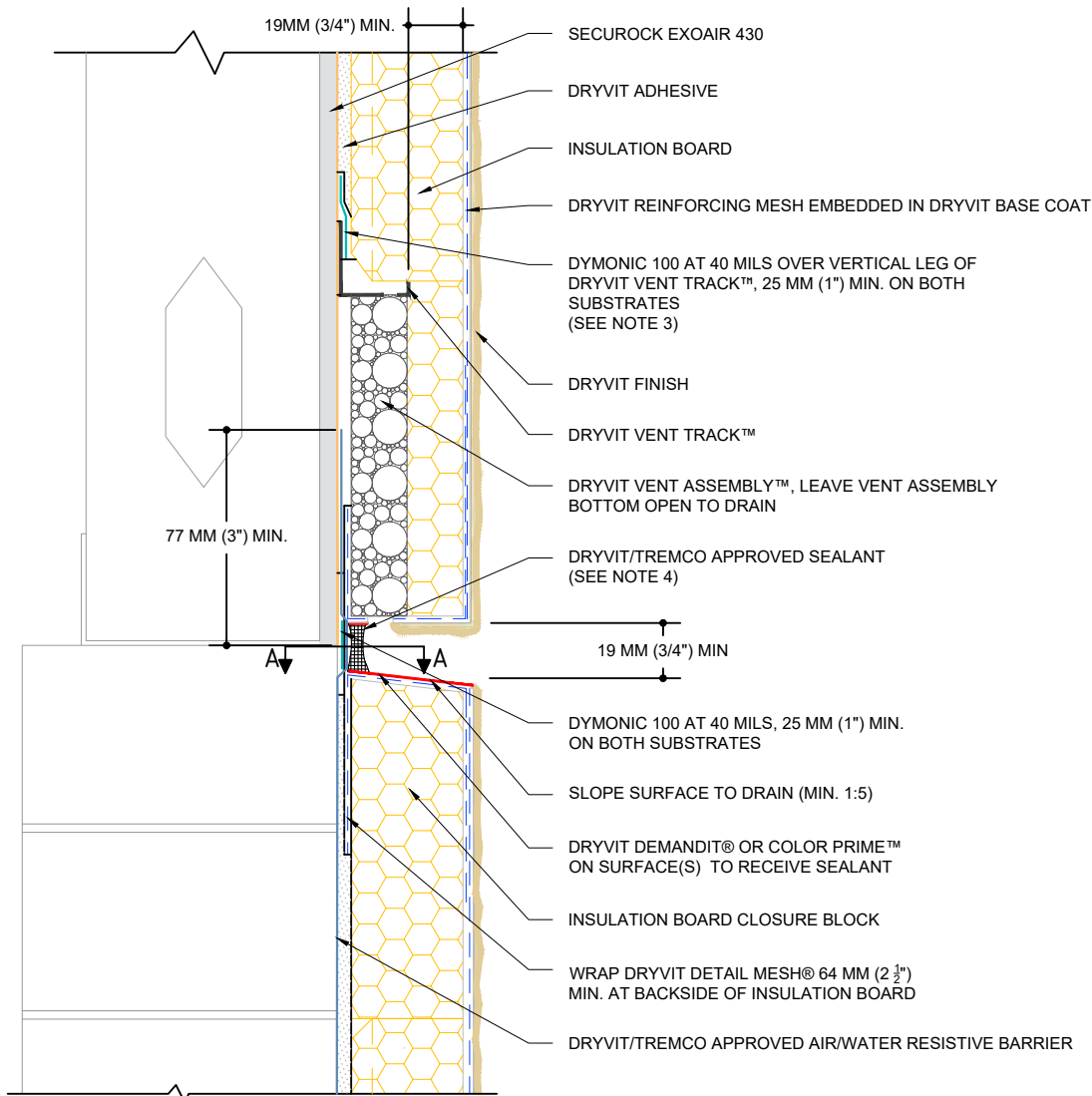
Date: 2/11/2022

File Name:

OSPE SE430 - 15



www.tremcogp.com



Section A-A

BY OTHERS OUTSULATION PE SECURock EXOAIR 430 SYSTEM

CLOSED CELL BACKER ROD, BY OTHERS

SEALANT AND BOND BREAKER AGAINST DYMonic 100 AT VENT ASSEMBLY ONLY

SEALANT MATERIAL, BY OTHERS (SEE NOTE 4)

LOCATION OF VENT ASSEMBLY

DYMonic 100

NOTE:

1. DRYVIT RECOMMENDS THAT GROUND FLOOR APPLICATIONS AND ALL FACADES EXPOSED TO ABNORMAL STRESS, HIGH TRAFFIC, OR DELIBERATE IMPACT HAVE THE BASE COAT REINFORCED WITH PANZER® MESH PRIOR TO STANDARD™ OR STANDARD PLUS™ MESH. LOCATION OF HIGH IMPACT ZONES SHOULD BE INDICATED ON CONTRACT DRAWINGS.

2. DRYVIT VENT ASSEMBLY IS INSTALLED ONLY AT PUNCHOUT IN DRYVIT VENT TRACK.

3. LIGHTLY SAND SURFACE OF TRACK TO MAXIMIZE ADHESION.

4. REFERENCE DS920 FOR APPROVED SEALANTS.



Dryvit Technical Support: 866-556-7752

The architecture, engineering, and design of the project using the Dryvit Tremco and USG products are the responsibility of the project's design professional. All products and systems must comply with local building codes and standards. This detail is for general information and guidance only and Dryvit Tremco and USG specifically disclaims any liability for the use of this detail. The project design professional determines, in its sole discretion, whether this detail or a functionally equivalent detail is best suited for the project. This detail is subject to change without notice. Contact Dryvit Tremco and USG to ensure you have the most recent version.

Outsulation® PE Securock® ExoAir 430 System®



Technical Support: 866-209-2404

Detail: Horizontal Expansion Joint

Drawn by: KAB

Checked by: CB

Scale: NTS

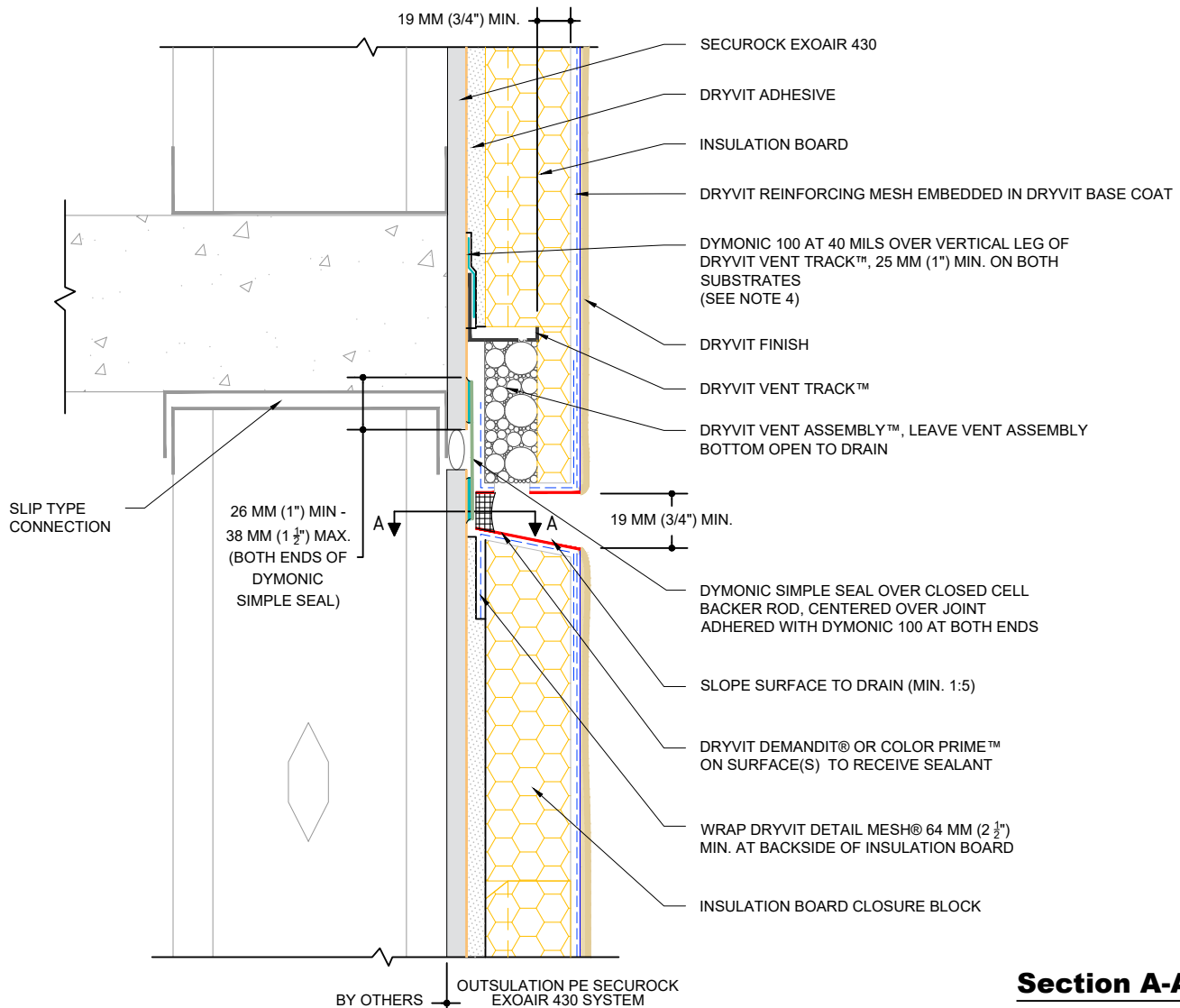
Date: 2/11/2022

File Name:

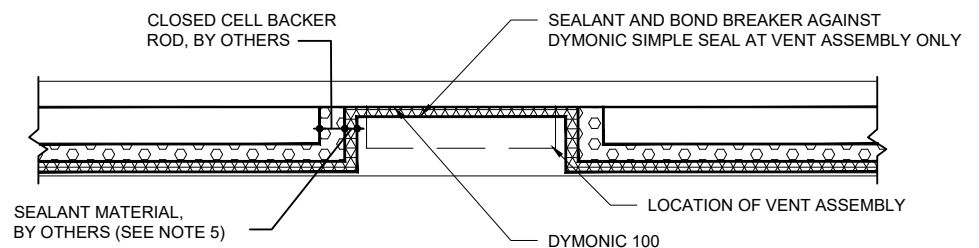
OSPE SE430 - 16



www.tremcocpg.com



Section A-A



NOTE:

1. DRYVIT RECOMMENDS THAT GROUND FLOOR APPLICATIONS AND ALL FACADES EXPOSED TO ABNORMAL STRESS, HIGH TRAFFIC, OR DELIBERATE IMPACT HAVE THE BASE COAT REINFORCED WITH PANZER® MESH PRIOR TO STANDARD™ OR STANDARD PLUS™ MESH. LOCATION OF HIGH IMPACT ZONES SHOULD BE INDICATED ON CONTRACT DRAWINGS.

2. EXPANSION JOINT IN THE OUTSULATION PE SECUROCK EXOAIR 430 SYSTEM IS NECESSARY WHERE SIGNIFICANT DIFFERENTIAL MOVEMENT IS EXPECTED AT FLOOR LINES.

3. LOCATE EXTERNAL SEALANT JOINT A MAXIMUM OF 51 MM (2") BELOW BREAK IN SUBSTRATE.

4. LIGHTLY SAND SURFACE OF TRACK TO MAXIMIZE ADHESION.

5. REFERENCE DS920 FOR APPROVED SEALANTS.



Dryvit Technical Support: 800-556-7752

The architecture, engineering, and design of the project using the Dryvit Tremco and USG products are the responsibility of the project's design professional. All products and systems must comply with local building codes and standards. This detail is for general information and guidance only and Dryvit Tremco and USG specifically disclaims any liability for the use of this detail. The project design professional determines, in its sole discretion, whether this detail or a functionally equivalent detail is best suited for the project. This detail is subject to change without notice. Contact Dryvit Tremco and USG to ensure you have the most recent version.

Outsulation® PE Securock® ExoAir 430 System®



Technical Support: 866-209-2404

Detail: Horizontal Slip Joint

Drawn by: KAB

Checked by: CB

Scale: NTS

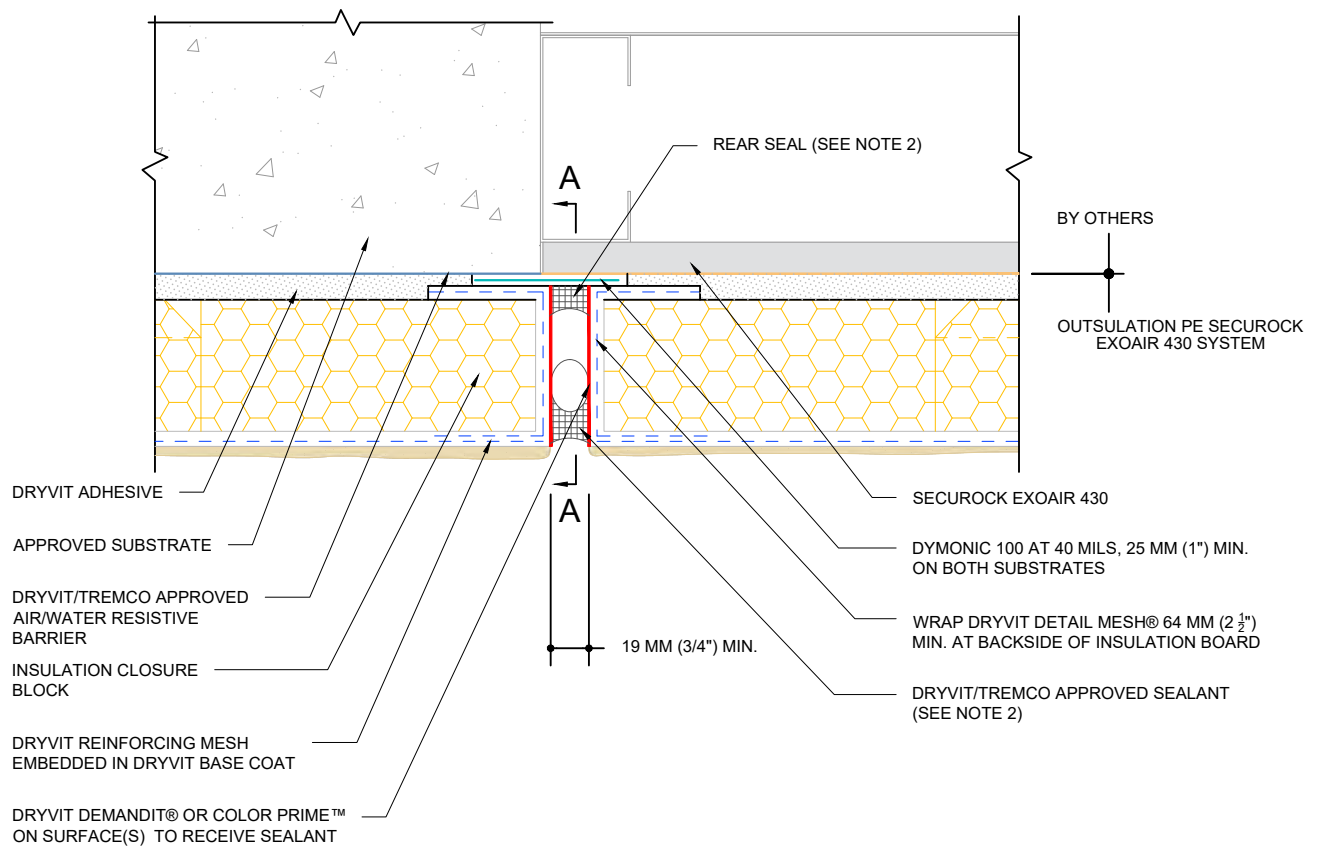
Date: 2/11/2022

File Name:

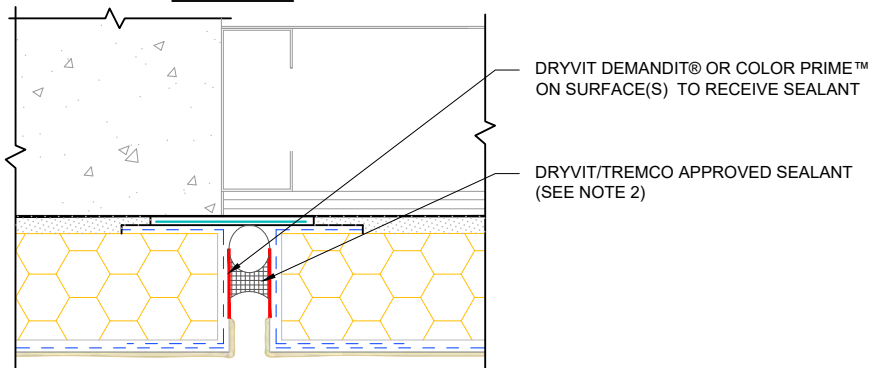
OSPE SE430 - 17



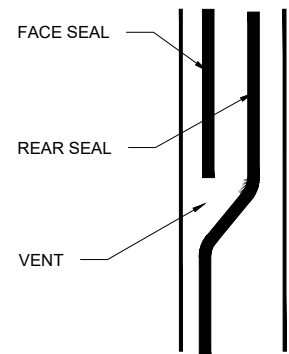
www.tremcocpg.com



OPTION



A-A



NOTE:
1. DRYVIT RECOMMENDS THAT GROUND FLOOR APPLICATIONS AND ALL FACADES EXPOSED TO ABNORMAL STRESS, HIGH TRAFFIC, OR DELIBERATE IMPACT HAVE THE BASE COAT REINFORCED WITH PANZER® MESH PRIOR TO STANDARD™ OR STANDARD PLUS™ MESH. LOCATION OF HIGH IMPACT ZONES SHOULD BE INDICATED ON CONTRACT DRAWINGS.

2. REFERENCE DS920 FOR APPROVED SEALANTS.



Dryvit Technical Support: 800-556-7752

The architecture, engineering, and design of the project using the Dryvit Tremco and USG products are the responsibility of the project's design professional. All products and systems must comply with local building codes and standards. This detail is for general information and guidance only and Dryvit Tremco and USG specifically disclaims any liability for the use of this detail. The project design professional determines, in its sole discretion, whether this detail or a functionally equivalent detail is best suited for the project. This detail is subject to change without notice. Contact Dryvit Tremco and USG to ensure you have the most recent version.

Outsulation® PE Securock® ExoAir 430 System®



Technical Support: 866-209-2404

Detail: Vertical Expansion Joint Options

Drawn by: KAB

Checked by: CB

Scale: NTS

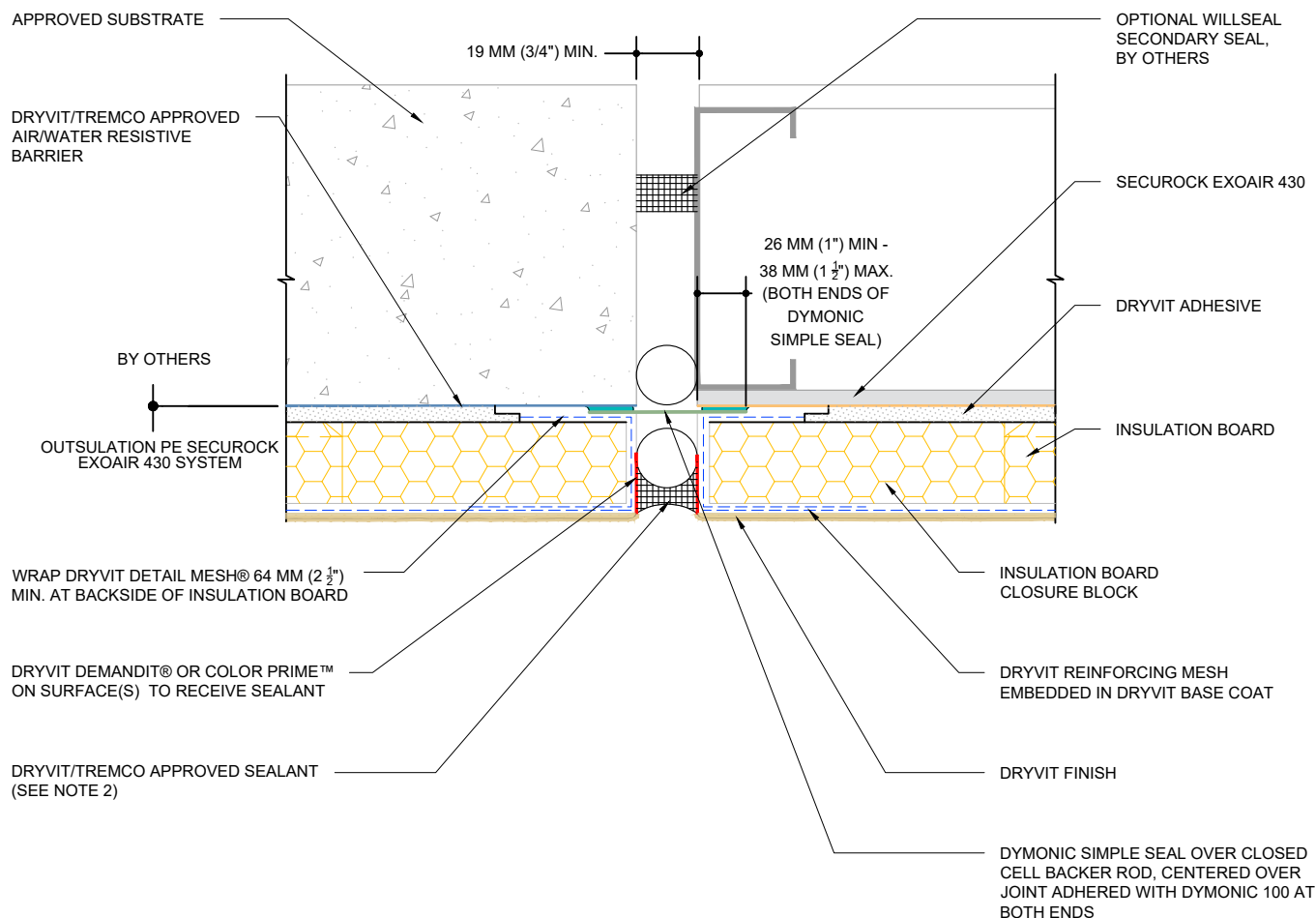
Date: 2/11/2022

File Name:

OSPE SE430 - 18



www.tremcocpg.com



- NOTE:
1. DRYVIT RECOMMENDS THAT GROUND FLOOR APPLICATIONS AND ALL FACADES EXPOSED TO ABNORMAL STRESS, HIGH TRAFFIC, OR DELIBERATE IMPACT HAVE THE BASE COAT REINFORCED WITH PANZER® MESH PRIOR TO STANDARD™ OR STANDARD PLUS™ MESH. LOCATION OF HIGH IMPACT ZONES SHOULD BE INDICATED ON CONTRACT DRAWINGS.
 2. REFERENCE DS920 FOR APPROVED SEALANTS.



The architecture, engineering, and design of the project using the Dryvit Tremco and USG products are the responsibility of the project's design professional. All products and systems must comply with local building codes and standards. This detail is for general information and guidance only and Dryvit Tremco and USG specifically disclaims any liability for the use of this detail. The project design professional determines, in its sole discretion, whether this detail or a functionally equivalent detail is best suited for the project. This detail is subject to change without notice. Contact Dryvit Tremco and USG to ensure you have the most recent version.

Outsulation® PE Securock® ExoAir 430 System®



Detail: Structural Expansion Joints

Drawn by: KAB

Checked by: CB

Scale: NTS

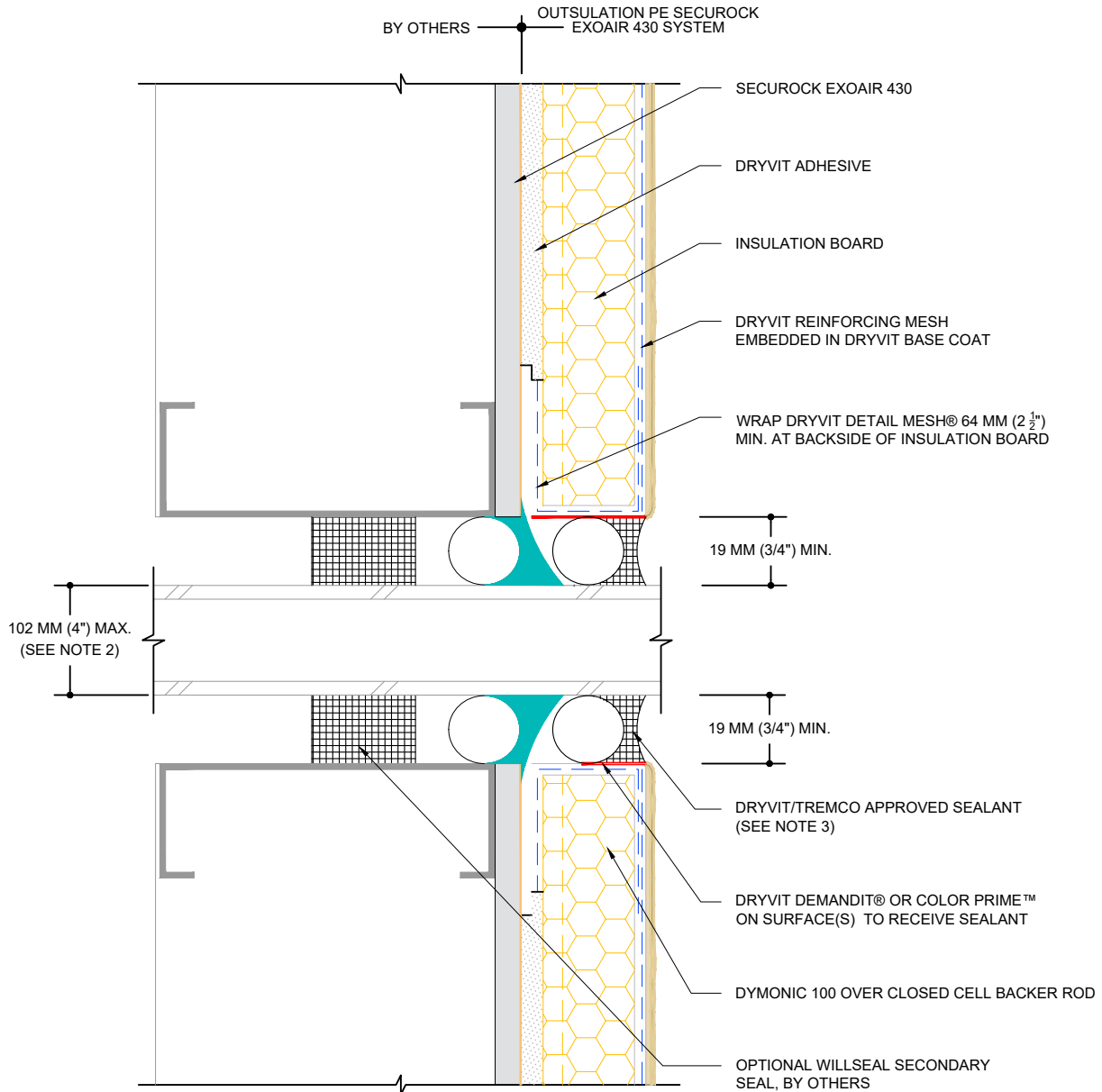
Date: 2/11/2022

File Name:

OSPE SE430 - 19



www.tremcocpg.com



NOTE:

1. DRYVIT RECOMMENDS THAT GROUND FLOOR APPLICATIONS AND ALL FACADES EXPOSED TO ABNORMAL STRESS, HIGH TRAFFIC, OR DELIBERATE IMPACT HAVE THE BASE COAT REINFORCED WITH PANZER® MESH PRIOR TO STANDARD™ OR STANDARD PLUS™ MESH. LOCATION OF HIGH IMPACT ZONES SHOULD BE INDICATED ON CONTRACT DRAWINGS.

2. FOR LARGER PENETRATIONS REFER TO MAJOR PENETRATIONS DETAIL.

3. REFERENCE DS920 FOR APPROVED SEALANTS.



Dryvit Technical Support: 800-556-7752

The architecture, engineering, and design of the project using the Dryvit Tremco and USG products are the responsibility of the project's design professional. All products and systems must comply with local building codes and standards. This detail is for general information and guidance only and Dryvit Tremco and USG specifically disclaims any liability for the use of this detail. The project design professional determines, in its sole discretion, whether this detail or a functionally equivalent detail is best suited for the project. This detail is subject to change without notice. Contact Dryvit Tremco and USG to ensure you have the most recent version.

Outsulation® PE Securock® ExoAir 430 System®



Technical Support: 866-209-2404

Detail: Minor Penetrations

Drawn by: KAB

Checked by: CB

Scale: NTS

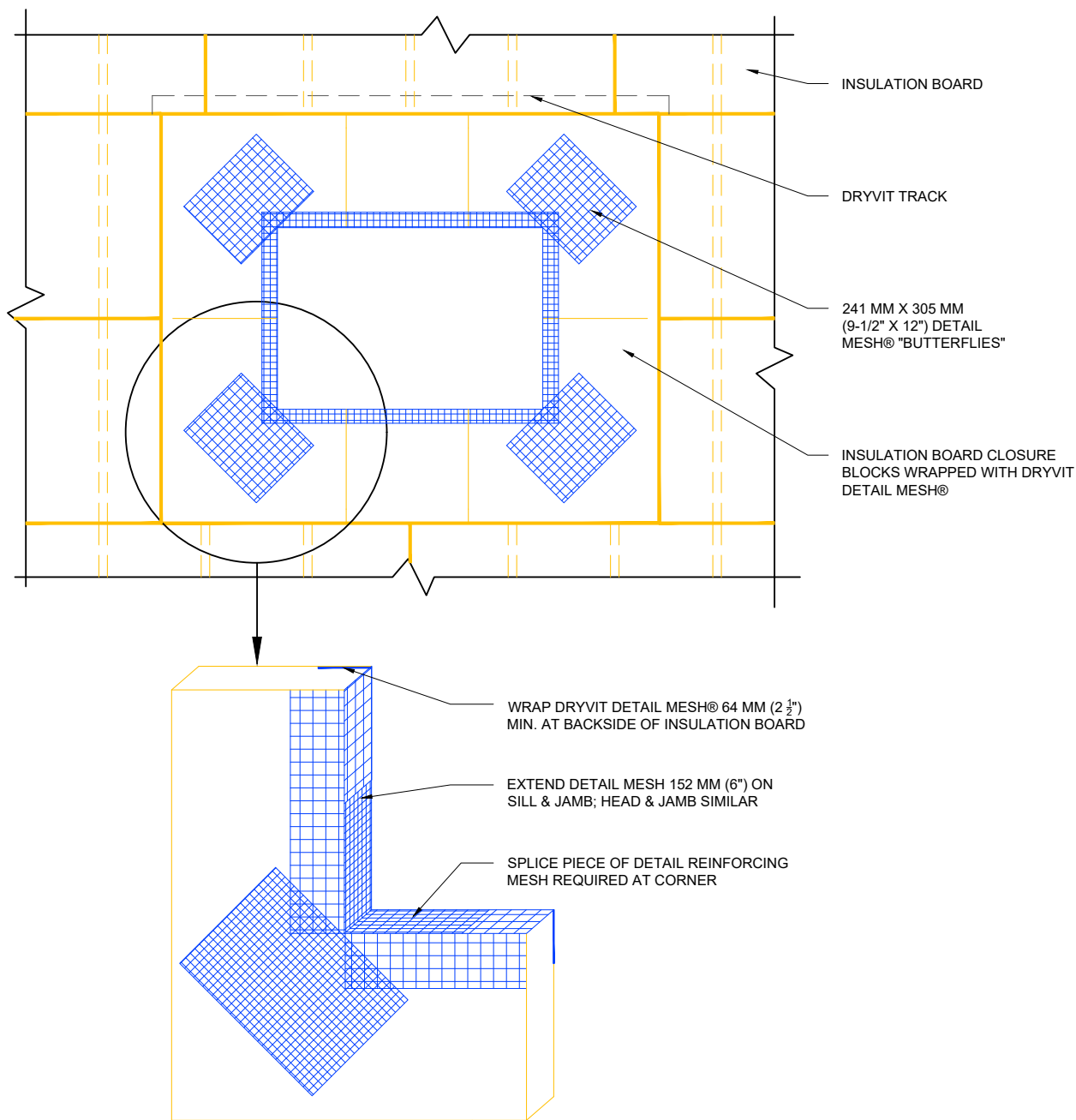
Date: 2/11/2022

File Name:

OSPE SE430 - 20



www.tremcocpg.com



NOTE:

1. DRYVIT RECOMMENDS THAT GROUND FLOOR APPLICATIONS AND ALL FACADES EXPOSED TO ABNORMAL STRESS, HIGH TRAFFIC, OR DELIBERATE IMPACT HAVE THE BASE COAT REINFORCED WITH PANZER® MESH PRIOR TO STANDARD™ OR STANDARD PLUS™ MESH. LOCATION OF HIGH IMPACT ZONES SHOULD BE INDICATED ON CONTRACT DRAWINGS.

2. LOCATE INSULATION BOARDS SUCH THAT BOARD EDGES DO NOT ALIGN WITH CORNERS OF PENETRATION.

3. TO MINIMIZE CRACKING AT CORNERS OF PENETRATIONS INSTALL DIAGONAL REINFORCING MESH.



Dryvit Technical Support: 800-556-7752

The architecture, engineering, and design of the project using the Dryvit Tremco and USG products are the responsibility of the project's design professional. All products and systems must comply with local building codes and standards. This detail is for general information and guidance only and Dryvit Tremco and USG specifically disclaims any liability for the use of this detail. The project design professional determines, in its sole discretion, whether this detail or a functionally equivalent detail is best suited for the project. This detail is subject to change without notice. Contact Dryvit Tremco and USG to ensure you have the most recent version.

Outsulation® PE Securock® ExoAir 430 System®



Technical Support: 866-209-2404

Detail: Major Penetrations

Drawn by: KAB

Checked by: CB

Scale: NTS

Date: 2/11/2022

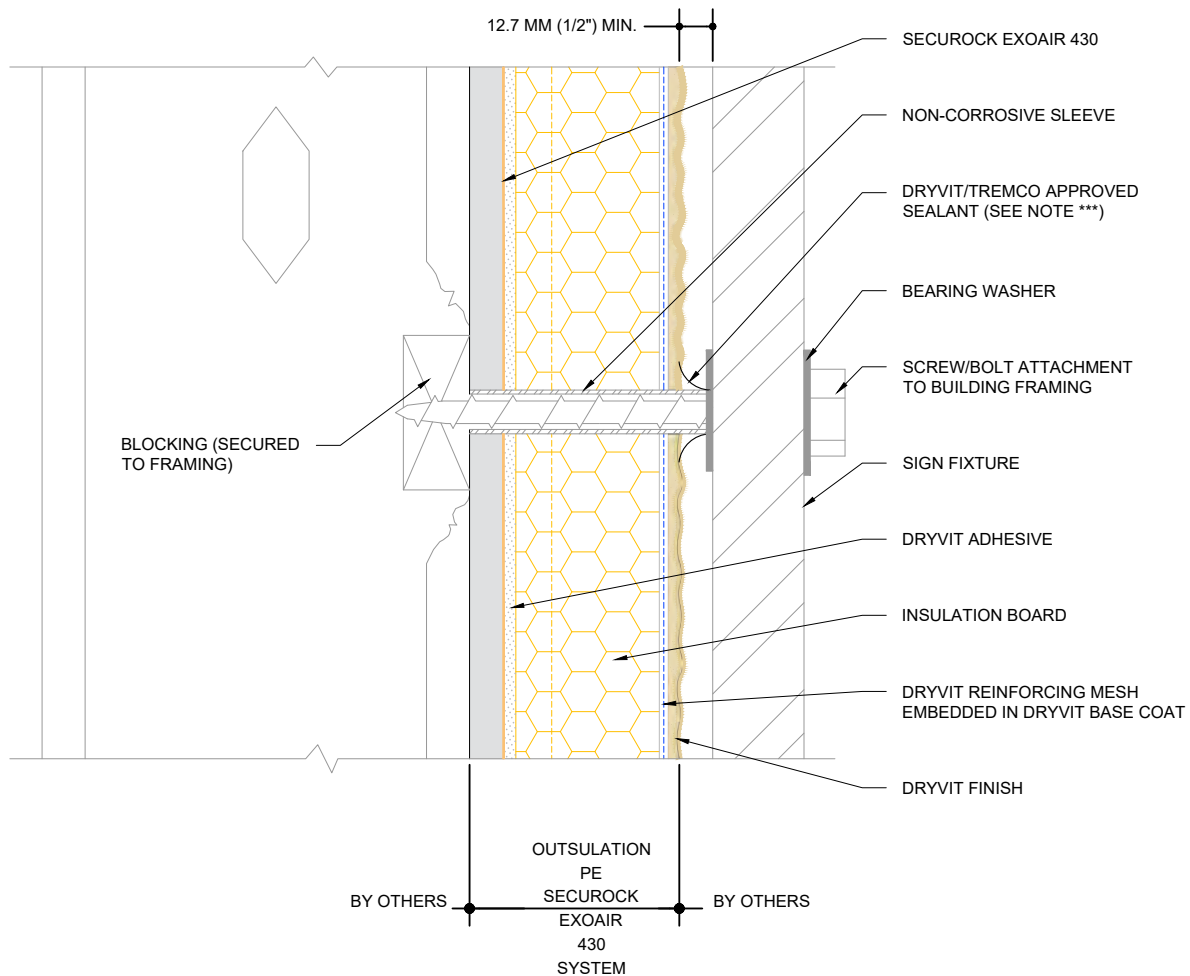
File Name:

OSPE SE430 - 21



Construction Products Group

www.tremcocpg.com



NOTE:

1. DRYVIT RECOMMENDS THAT GROUND FLOOR APPLICATIONS AND ALL FACADES EXPOSED TO ABNORMAL STRESS, HIGH TRAFFIC, OR DELIBERATE IMPACT HAVE THE BASE COAT REINFORCED WITH PANZER® MESH PRIOR TO STANDARD™ OR STANDARD PLUS™ MESH. LOCATION OF HIGH IMPACT ZONES SHOULD BE INDICATED ON CONTRACT DRAWINGS.

2. ENTIRE PERIMETER OF PIPE SLEEVE IS CAULKED TO PREVENT WATER ENTRY INTO WALL.



Dryvit Technical Support: 800-556-7752

The architecture, engineering, and design of the project using the Dryvit Tremco and USG products are the responsibility of the project's design professional. All products and systems must comply with local building codes and standards. This detail is for general information and guidance only and Dryvit Tremco and USG specifically disclaims any liability for the use of this detail. The project design professional determines, in its sole discretion, whether this detail or a functionally equivalent detail is best suited for the project. This detail is subject to change without notice. Contact Dryvit Tremco and USG to ensure you have the most recent version.

Outsulation® PE Securock® ExoAir 430 System®



Technical Support: 866-209-2404

Detail: Sign Attachment

Drawn by: KAB

Checked by: CB

Scale: NTS

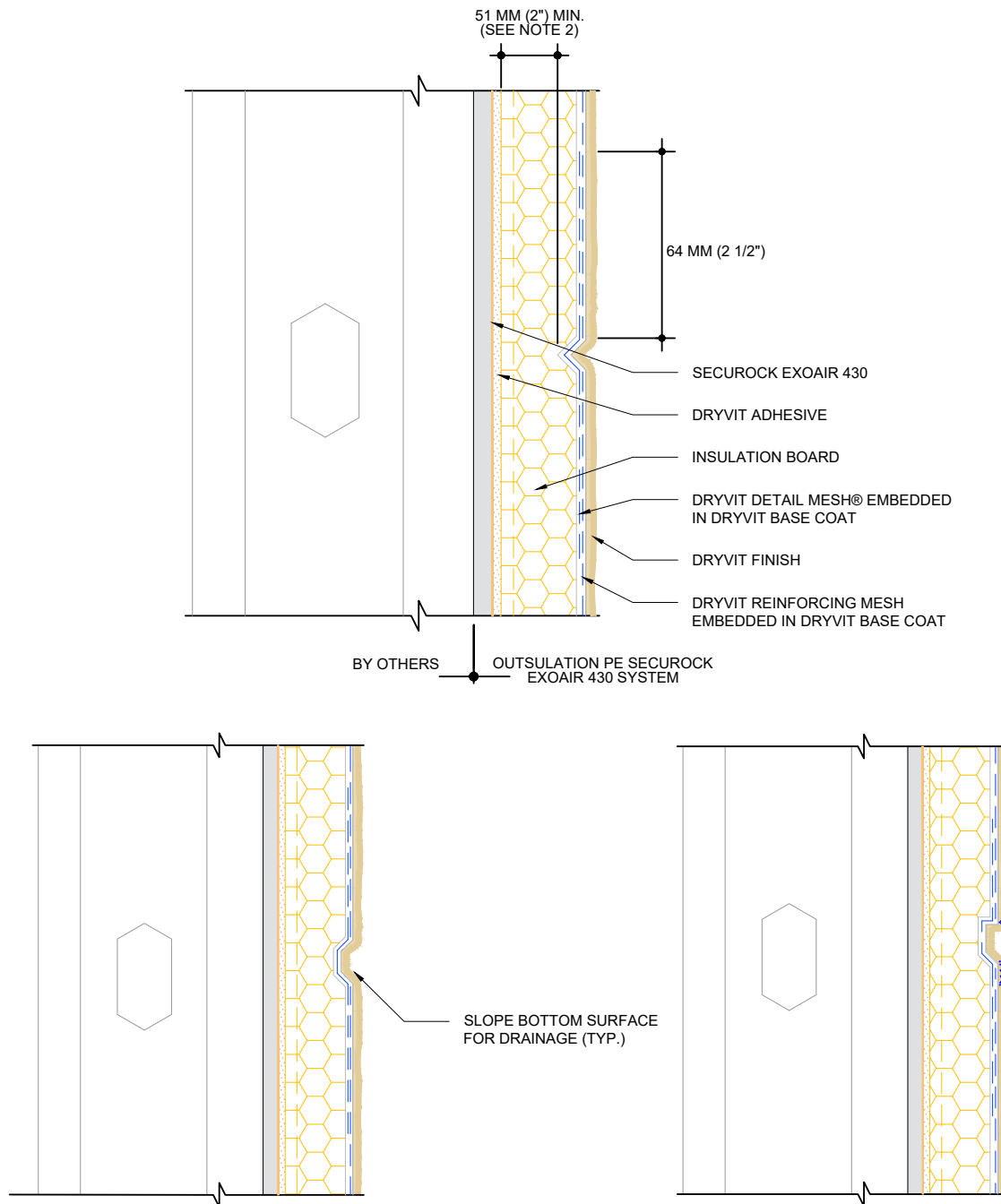
Date: 2/11/2022

File Name:

OSPE SE430 - 22



www.tremcocpg.com



NOTE:

1. DRYVIT RECOMMENDS THAT GROUND FLOOR APPLICATIONS AND ALL FACADES EXPOSED TO ABNORMAL STRESS, HIGH TRAFFIC, OR DELIBERATE IMPACT HAVE THE BASE COAT REINFORCED WITH PANZER® MESH PRIOR TO STANDARD™ OR STANDARD PLUS™ MESH. LOCATION OF HIGH IMPACT ZONES SHOULD BE INDICATED ON CONTRACT DRAWINGS.

2. 51 MM (2") THICKNESS OF EPS IS REQUIRED AT BASE OF REVEALS.



Dryvit Technical Support: 800-556-7752

The architecture, engineering, and design of the project using the Dryvit Tremco and USG products are the responsibility of the project's design professional. All products and systems must comply with local building codes and standards. This detail is for general information and guidance only and Dryvit Tremco and USG specifically disclaims any liability for the use of this detail. The project design professional determines, in its sole discretion, whether this detail or a functionally equivalent detail is best suited for the project. This detail is subject to change without notice. Contact Dryvit Tremco and USG to ensure you have the most recent version.

Outsulation® PE Securock® ExoAir 430 System®



Technical Support: 866-209-2404

Detail: Aesthetic Reveals

Drawn by: KAB

Checked by: CB

Scale: NTS

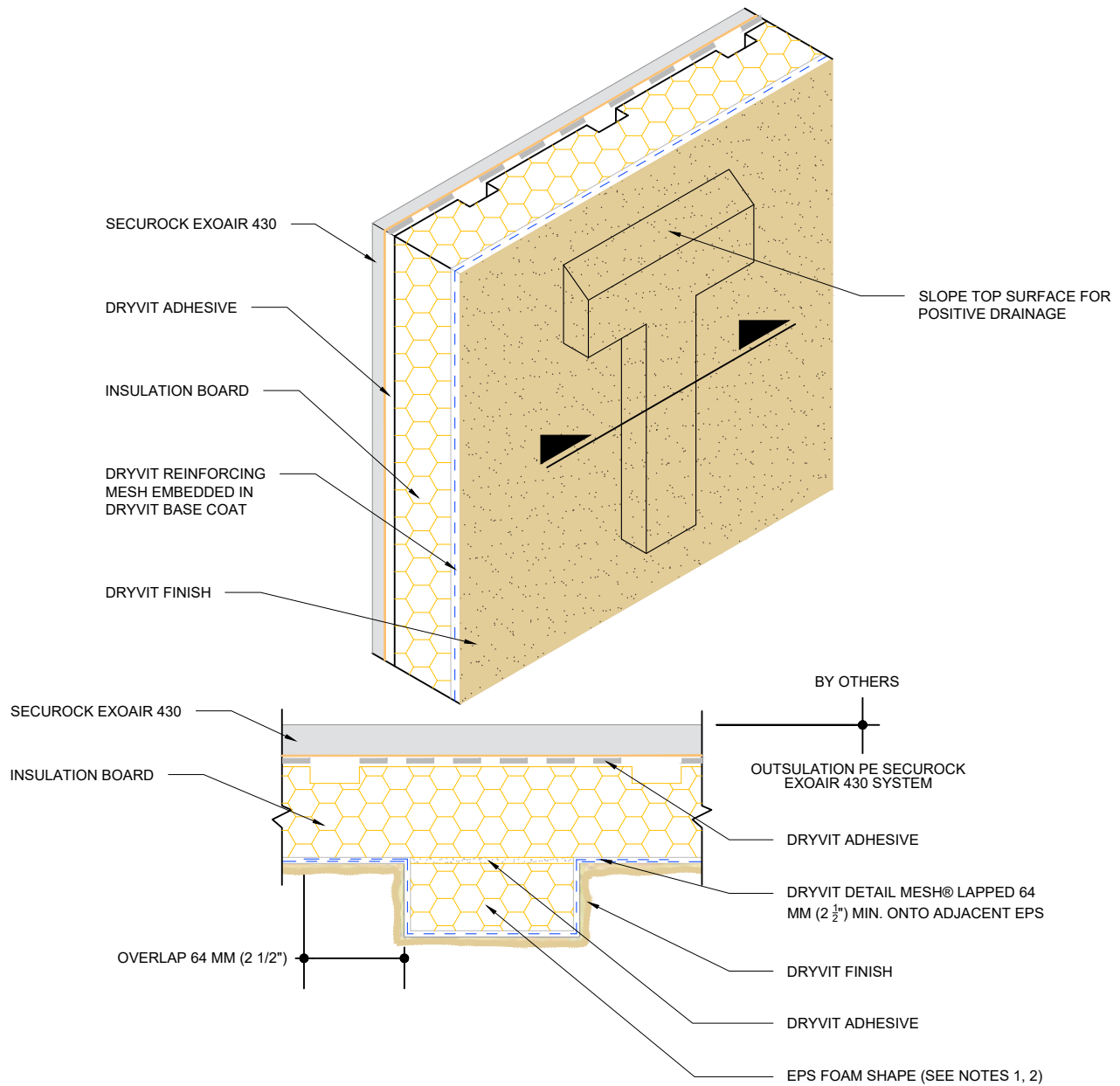
Date: 2/11/2022

File Name:

OSPE SE430 - 23



www.tremcocpg.com



NOTE:
 1. MAXIMUM THICKNESS OF EPS BUILT OUT SHAPES SHALL NOT EXCEED 318 MM (12 1/2" INCHES) AT ANY POINT MEASURED FROM THE SUBSTRATE.
 2. PERCENTAGE OF WALL AREA COVERED BY EPS FOAM SHAPES IN EXCESS OF 102 MM (4 IN) IN THICKNESS SHALL NOT EXCEED 15%.

Dryvit
 Dryvit Technical Support: 800-556-7752

The architecture, engineering, and design of the project using the Dryvit Tremco and USG products are the responsibility of the project's design professional. All products and systems must comply with local building codes and standards. This detail is for general information and guidance only and Dryvit Tremco and USG specifically disclaims any liability for the use of this detail. The project design professional determines, in its sole discretion, whether this detail or a functionally equivalent detail is best suited for the project. This detail is subject to change without notice. Contact Dryvit Tremco and USG to ensure you have the most recent version.

Outsulation® PE Securock® ExoAir 430 System®

USG | **TREMCO**
SECUROCK® EXOAIR® 430
 Technical Support: 866-209-2404

Detail: Projecting Graphics

Drawn by: KAB

Checked by: CB

Scale: NTS

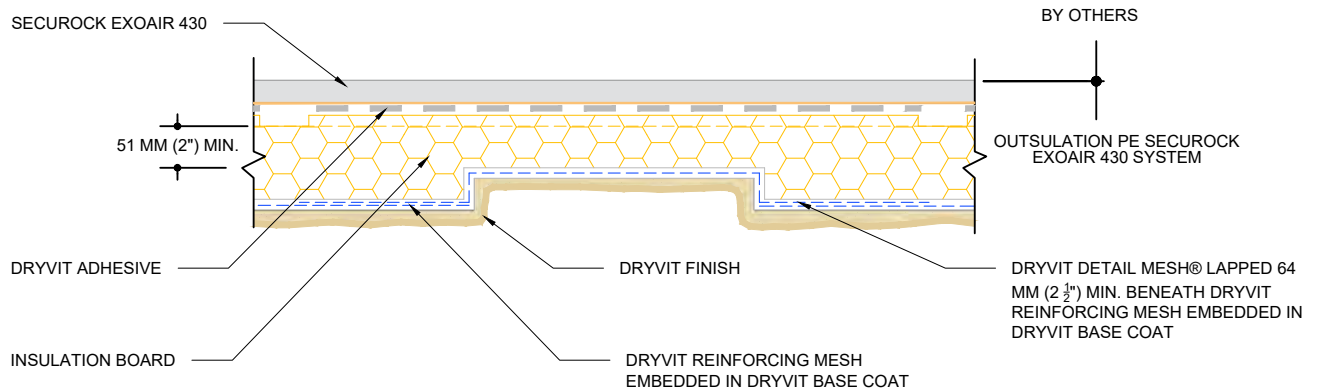
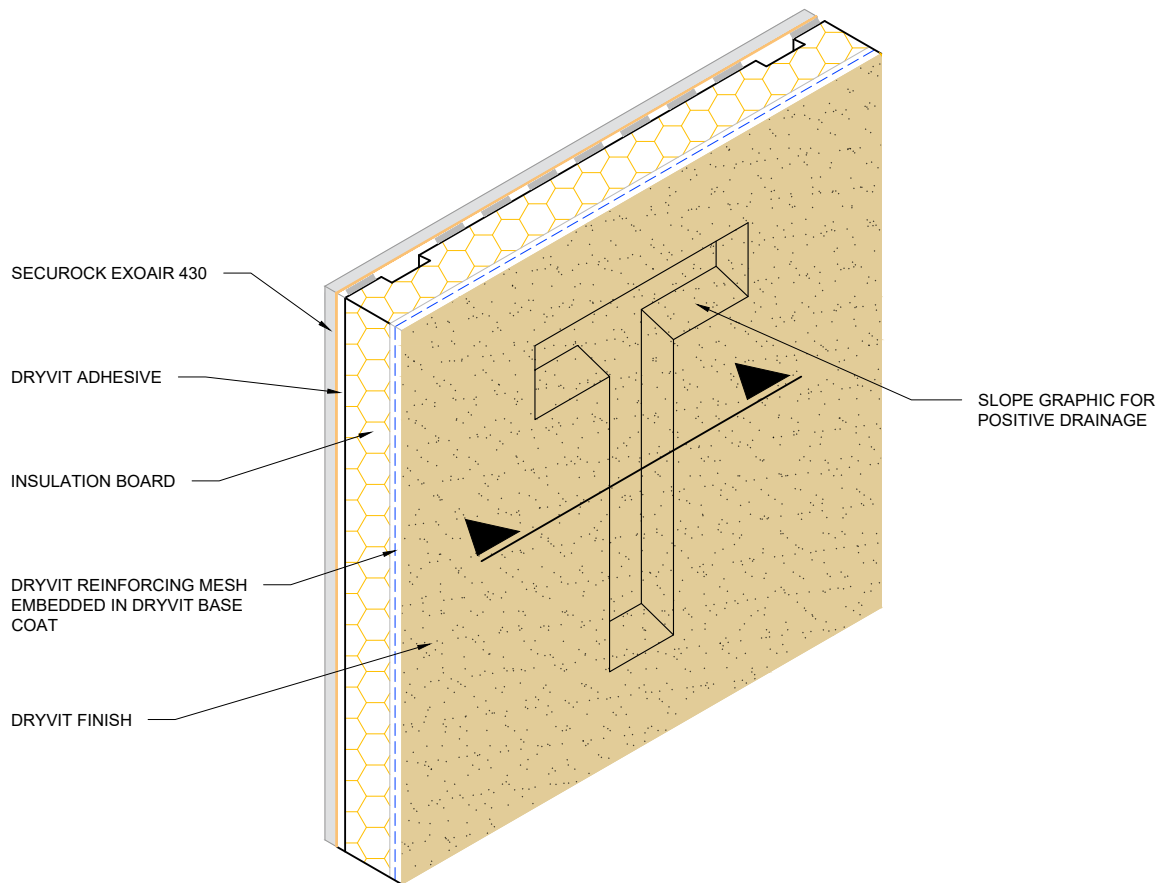
Date: 2/11/2022

File Name:

OSPE SE430 - 24

www.tremcocpg.com

TREMCO
 Construction Products Group



Dryvit Technical Support: 800-556-7752

The architecture, engineering, and design of the project using the Dryvit Tremco and USG products are the responsibility of the project's design professional. All products and systems must comply with local building codes and standards. This detail is for general information and guidance only and Dryvit Tremco and USG specifically disclaims any liability for the use of this detail. The project design professional determines, in its sole discretion, whether this detail or a functionally equivalent detail is best suited for the project. This detail is subject to change without notice. Contact Dryvit Tremco and USG to ensure you have the most recent version.

Outsulation® PE Securock® ExoAir 430 System®



Technical Support: 866-209-2404

Detail: Recessed Graphics

Drawn by: KAB

Checked by: CB

Scale: NTS

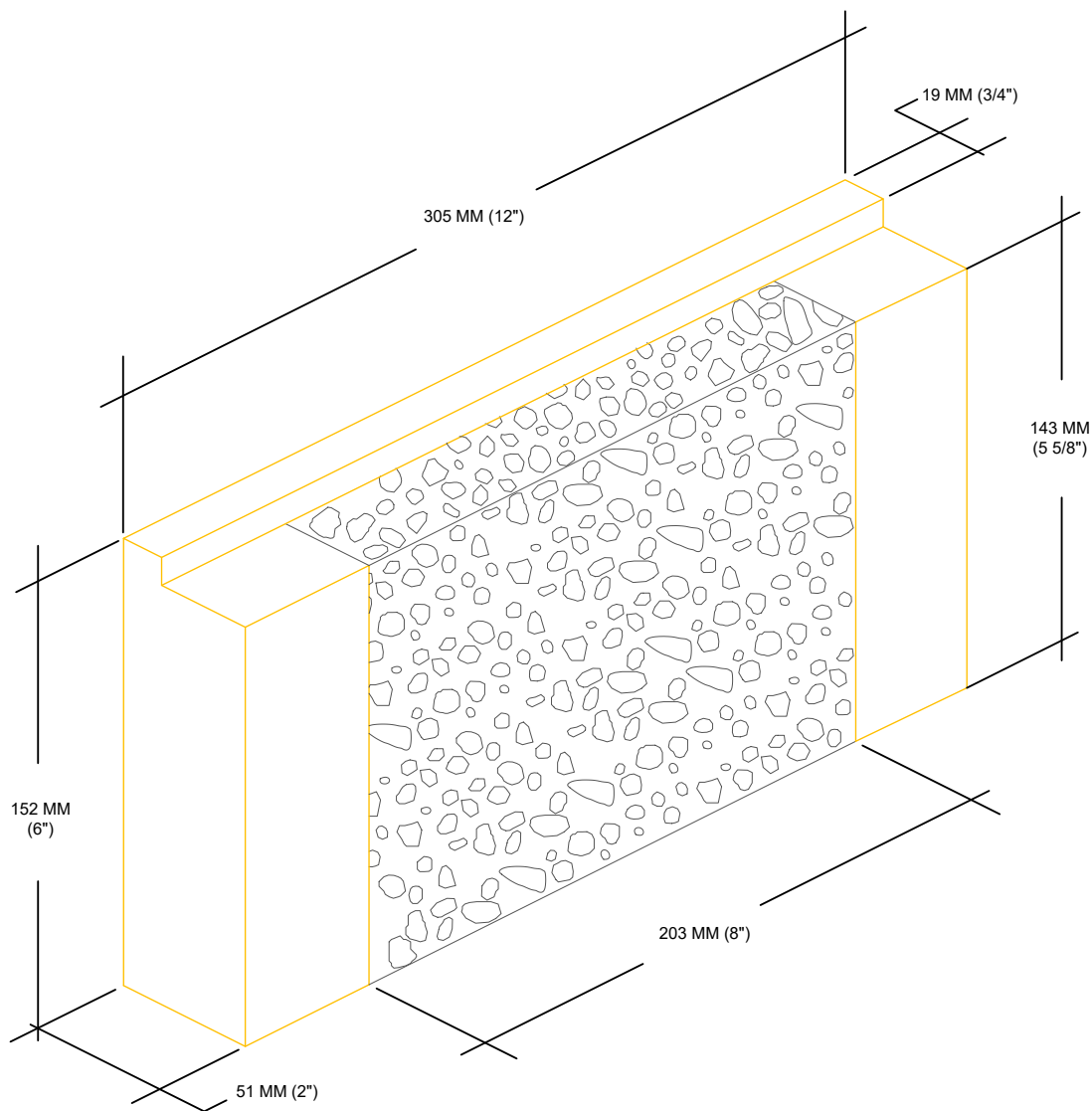
Date: 2/11/2022

File Name:

OSPE SE430 - 25



www.tremcocpg.com



Dryvit Technical Support: 800-556-7752

The architecture, engineering, and design of the project using the Dryvit Tremco and USG products are the responsibility of the project's design professional. All products and systems must comply with local building codes and standards. This detail is for general information and guidance only and Dryvit Tremco and USG specifically disclaims any liability for the use of this detail. The project design professional determines, in its sole discretion, whether this detail or a functionally equivalent detail is best suited for the project. This detail is subject to change without notice. Contact Dryvit Tremco and USG to ensure you have the most recent version.

Outsulation® PE Securock® ExoAir 430 System®



SECUROCK® EXOAIR® 430

Technical Support: 866-209-2404

Detail: Dryvit Vent Assembly™

Drawn by: KAB

Checked by: CB

Scale: NTS

Date: 2/11/2022

File Name:

OSPE SE430 - 26



Construction Products Group

www.tremcocpg.com