

OUTSULATION® MINERAL WOOL SYSTEM

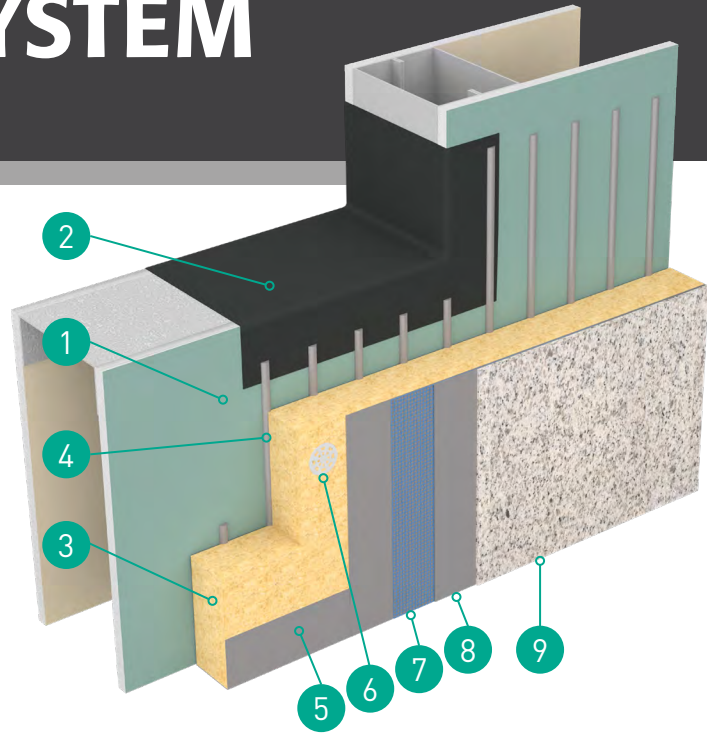
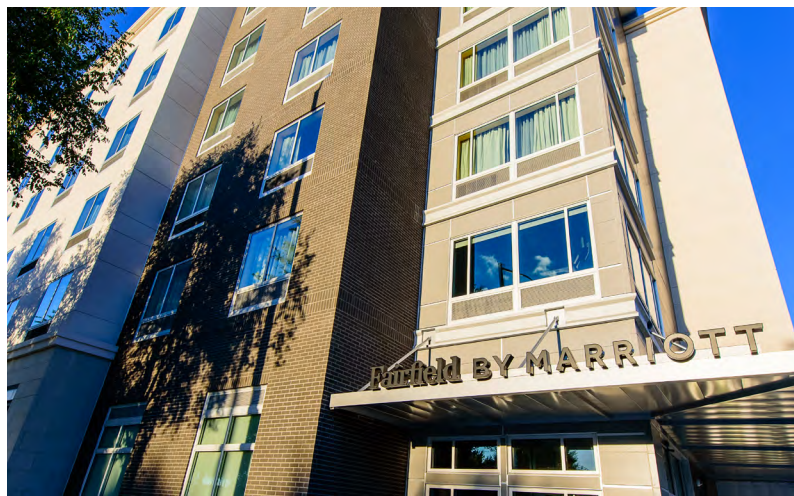
System Overview

An Exterior Insulation and Finish System (EIFS) that incorporates moisture drainage, an air/water-resistive barrier, and non-combustible mineral wool Continuous Insulation with an R-Value of 4.0 per inch.

Outsulation® Mineral Wool System offers an engineered and high-performance system that is built for maximum R-Value and non-combustibility.

Features & Benefits

- ROCKWOOL® Frontrock™ Mineral Wool Board is Available in both Mono-Density and Dual-Density
- R-Value of 4.0 per inch Provides Excellent Energy Efficiency
- New York City Department of Building (DOB) Code Compliant
- ASTM E136 (and CAN/ULC S114) Non-Combustible Mineral Wool Insulation Board
- NFPA 285 and NFPA 268 Fire Testing Compliant
- Single-Source Wall Solution Providing Protection Against the Effects of Air, Water, Thermal and Vapor



System Components

1	Dryvit/Tremco Air/Water-Resistive Barrier and Accessory Components
2	Dryvit/Tremco Flashing System
3	Field-Prepared Starter Board with Drainage
4	Dryvit Genesis® Adhesive in Vertical Notched Trowel Configuration
5	ROCKWOOL® Frontrock™ Mineral Wool Insulation Board
6	Mechanical Fastener - Surface Flush or Countersunk
7	Standard Plus Reinforcing Mesh
8	Dryvit Genesis Base Coat
9	Dryvit Textured Finish (<i>Stone Mist®</i> Shown)

