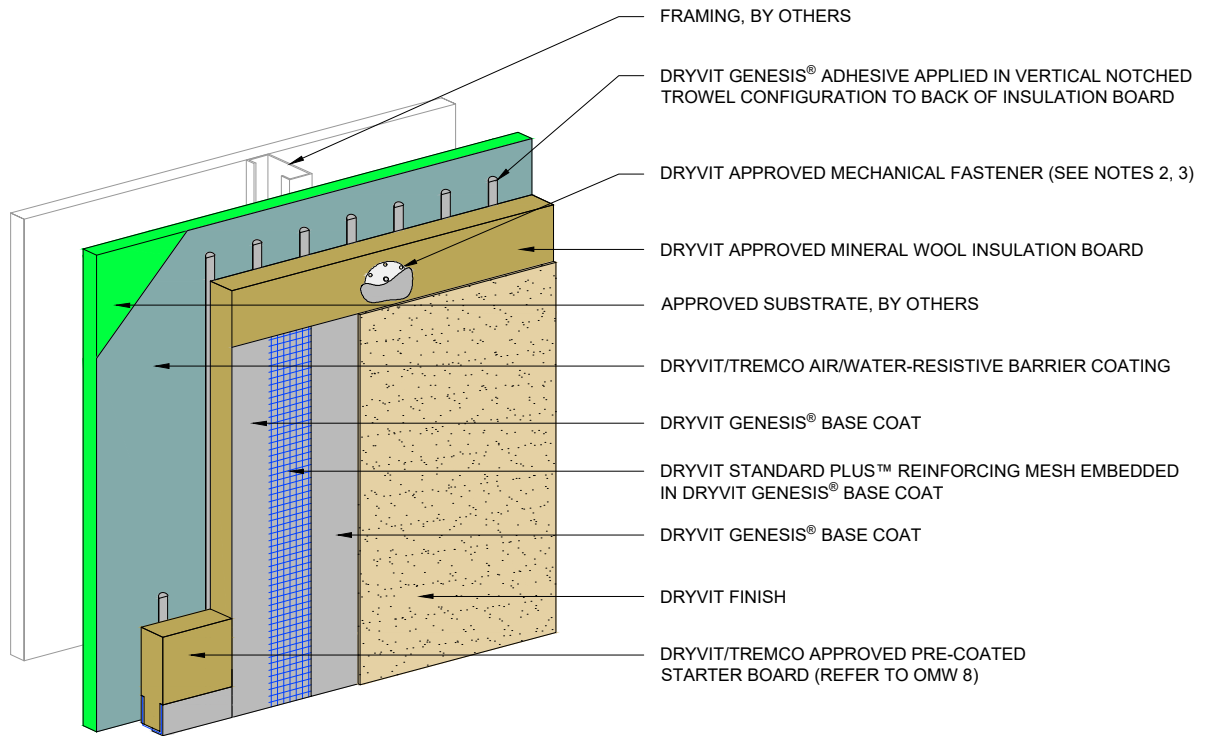
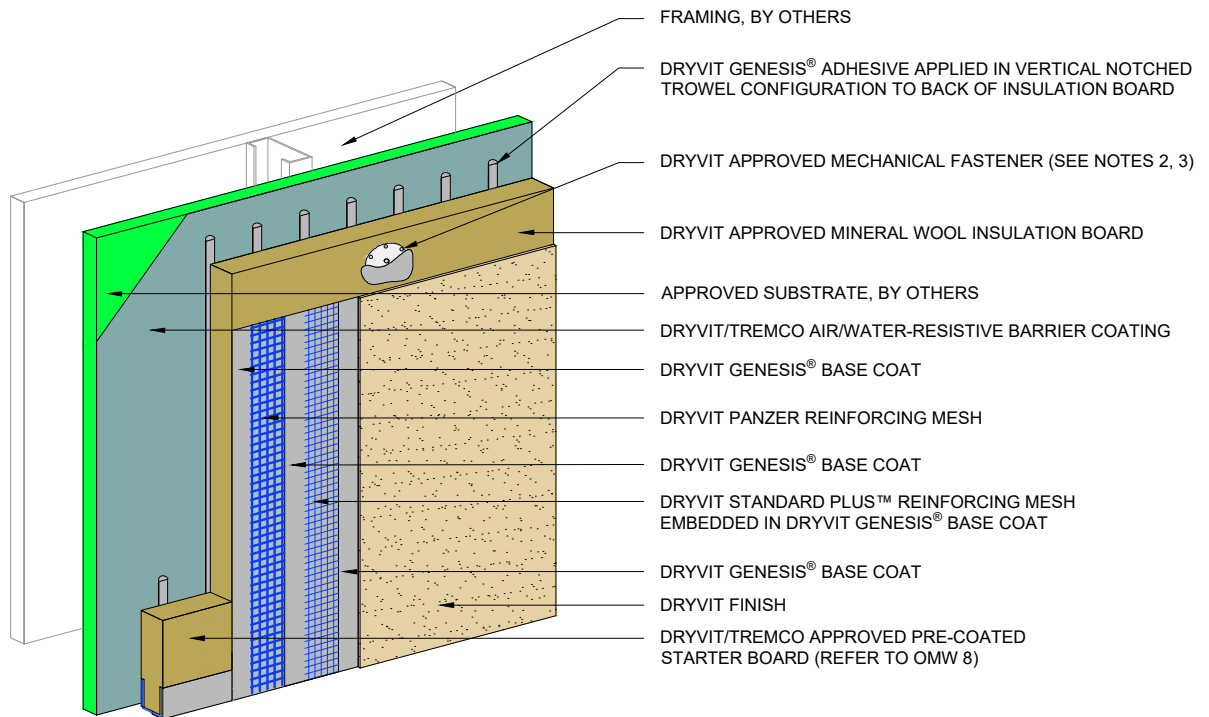


STANDARD IMPACT RESISTANCE



- FRAMING, BY OTHERS
- DRYVIT GENESIS® ADHESIVE APPLIED IN VERTICAL NOTCHED TROWEL CONFIGURATION TO BACK OF INSULATION BOARD
- DRYVIT APPROVED MECHANICAL FASTENER (SEE NOTES 2, 3)
- DRYVIT APPROVED MINERAL WOOL INSULATION BOARD
- APPROVED SUBSTRATE, BY OTHERS
- DRYVIT/TREMCO AIR/WATER-RESISTIVE BARRIER COATING
- DRYVIT GENESIS® BASE COAT
- DRYVIT STANDARD PLUS™ REINFORCING MESH EMBEDDED IN DRYVIT GENESIS® BASE COAT
- DRYVIT GENESIS® BASE COAT
- DRYVIT FINISH
- DRYVIT/TREMCO APPROVED PRE-COATED STARTER BOARD (REFER TO OMW 8)

ULTRA HIGH IMPACT RESISTANCE



- FRAMING, BY OTHERS
- DRYVIT GENESIS® ADHESIVE APPLIED IN VERTICAL NOTCHED TROWEL CONFIGURATION TO BACK OF INSULATION BOARD
- DRYVIT APPROVED MECHANICAL FASTENER (SEE NOTES 2, 3)
- DRYVIT APPROVED MINERAL WOOL INSULATION BOARD
- APPROVED SUBSTRATE, BY OTHERS
- DRYVIT/TREMCO AIR/WATER-RESISTIVE BARRIER COATING
- DRYVIT GENESIS® BASE COAT
- DRYVIT PANZER REINFORCING MESH
- DRYVIT GENESIS® BASE COAT
- DRYVIT STANDARD PLUS™ REINFORCING MESH EMBEDDED IN DRYVIT GENESIS® BASE COAT
- DRYVIT GENESIS® BASE COAT
- DRYVIT FINISH
- DRYVIT/TREMCO APPROVED PRE-COATED STARTER BOARD (REFER TO OMW 8)

**NOTE:**

1. DRYVIT RECOMMENDS THAT GROUND FLOOR APPLICATIONS AND ALL FACADES EXPOSED TO ABNORMAL STRESS, HIGH TRAFFIC, OR DELIBERATE IMPACT HAVE THE BASE COAT REINFORCED WITH PANZER® MESH PRIOR TO STANDARD PLUS™ MESH. LOCATION OF HIGH IMPACT ZONES SHOULD BE INDICATED ON CONTRACT DRAWINGS.
2. ALLOW ADHESIVE TO DRY IN ADVANCE OF INSTALLING FASTENERS. SPOT FASTENER/WASHER WITH DRYVIT GENESIS® BASE COAT. SUPPORT MINERAL WOOL INSULATION BOARD, AS REQUIRED, WHILE ADHESIVE DRIES.
3. REFER TO OWM 6, OMW 6a, AND OMW 7 FOR MECHANICAL FASTENER TYPE, LAYOUT, DIMENSION, AND WIND LOAD LIMITS.

*The architecture, engineering, and design of the project using the Dryvit and Tremco products are the responsibility of the project's design professional. All products and systems must comply with local building codes and standards. This detail is for general information and guidance only and Dryvit and Tremco specifically disclaims any liability for the use of this detail. The project design professional determines, in its sole discretion, whether this detail or a functionally equivalent detail is best suited for the project. This detail is subject to change without notice. Contact Dryvit and Tremco to ensure you have the most recent version.*



Dryvit Technical Support: 800-556-7752

Detail: Outsulation Mineral Wool System Cutaway

Drawn by: HDE    Checked by: KK BD    Scale: NTS    Date: 11/2022

File Name:

OMW 1

