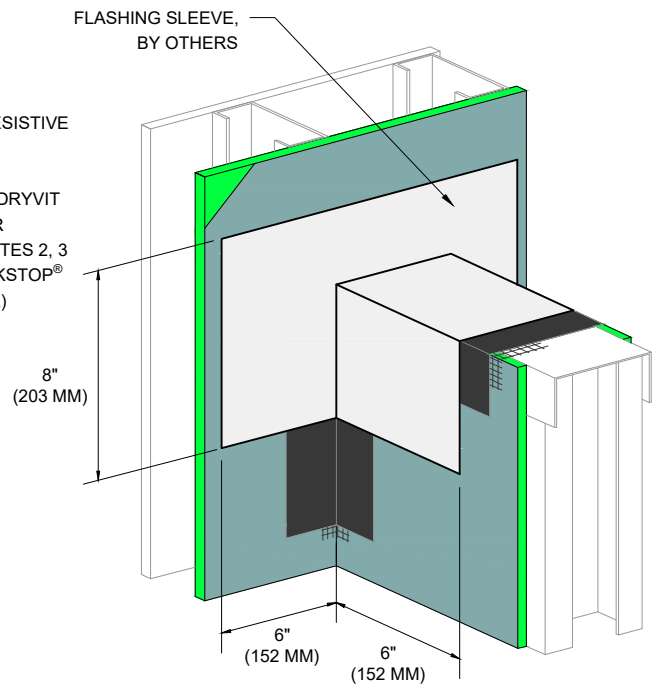
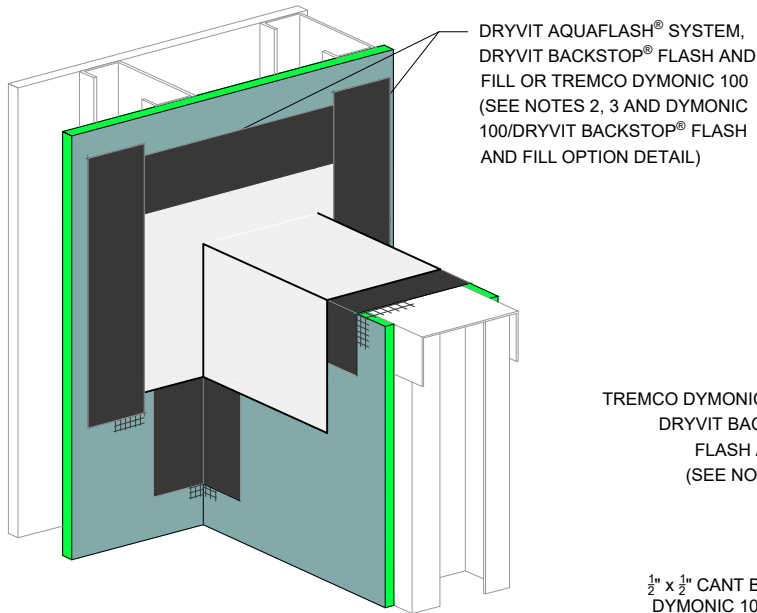


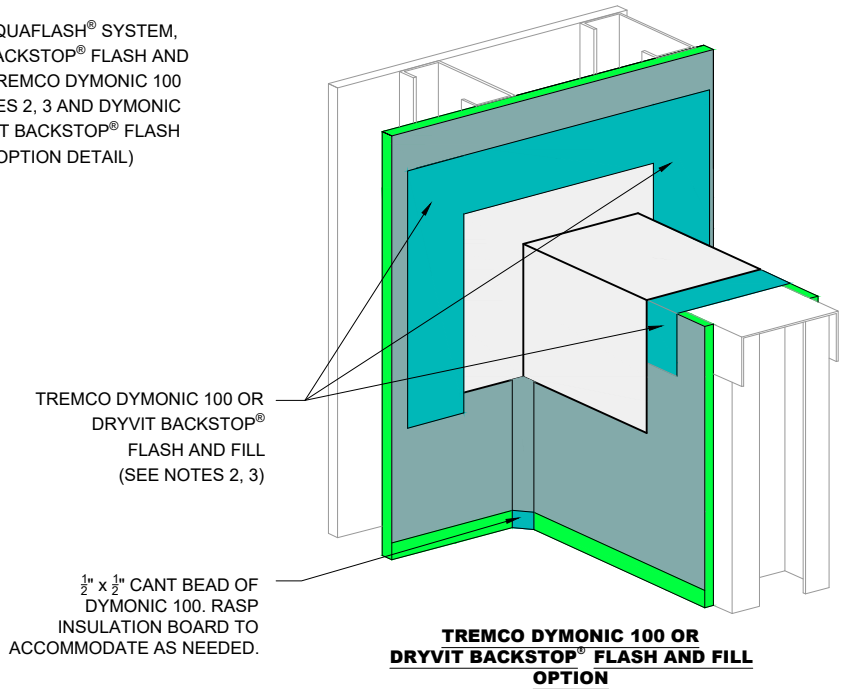
**STEP #1**



**STEP #2**



**STEP #3**



**TREMCO DYMONIC 100 OR DRYVIT BACKSTOP® FLASH AND FILL OPTION**

**NOTE:**

1. DRYVIT RECOMMENDS THAT GROUND FLOOR APPLICATIONS AND ALL FACADES EXPOSED TO ABNORMAL STRESS, HIGH TRAFFIC, OR DELIBERATE IMPACT HAVE THE BASE COAT REINFORCED WITH PANZER® MESH PRIOR TO STANDARD OR STANDARD PLUS MESH. LOCATION OF HIGH IMPACT ZONES SHOULD BE INDICATED ON CONTRACT DRAWINGS.
2. REFER TO PRODUCT DATA SHEETS FOR SPECIFIC APPLICATION METHODS.
3. BACKSTOP® FLASH AND FILL MAY ONLY BE USED WITH BACKSTOP® NTX™ AWRB.

*The architecture, engineering, and design of the project using the Dryvit and Tremco products are the responsibility of the project's design professional. All products and systems must comply with local building codes and standards. This detail is for general information and guidance only and Dryvit and Tremco specifically disclaims any liability for the use of this detail. The project design professional determines, in its sole discretion, whether this detail or a functionally equivalent detail is best suited for the project. This detail is subject to change without notice. Contact Dryvit and Tremco to ensure you have the most recent version.*



Dryvit Technical Support: 800-556-7752

Detail: Preparation At Parapet/ Wall Intersection

Drawn by: HDE

Checked by: KK  
BD

Scale: NTS

Date: 11/2022

File Name:

OMW 19

