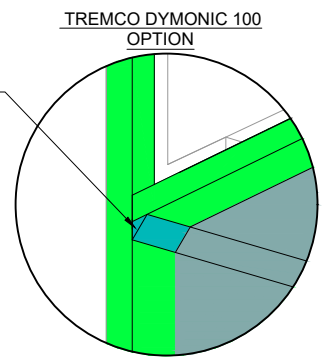


- NOTE:**
1. DRYVIT RECOMMENDS THAT GROUND FLOOR APPLICATIONS AND ALL FACADES EXPOSED TO ABNORMAL STRESS, HIGH TRAFFIC, OR DELIBERATE IMPACT HAVE THE BASE COAT REINFORCED WITH PANZER® MESH PRIOR TO STANDARD PLUS™ MESH. LOCATION OF HIGH IMPACT ZONES SHOULD BE INDICATED ON CONTRACT DRAWINGS.
  2. DRYVIT DEMANDIT® OR COLOR PRIME™ ON SURFACES TO RECEIVE SEALANT.
  3. DRYVIT/TREMCO AIR/WATER-RESISTIVE BARRIER IS REQUIRED OVER VERTICAL SUBSTRATES. APPLICATION OVER HORIZONTAL SOFFIT SUBSTRATE IS OPTIONAL UNLESS REQUIRED AS PART OF A CONTINUOUS AIR BARRIER SYSTEM.

4. SEALANT JOINT IS REQUIRED FOR SUSPENDED SOFFITS. OPTIONAL FOR RIGIDLY FRAMED.
5. ALLOW ADHESIVE TO DRY IN ADVANCE OF INSTALLING FASTENERS. SPOT FASTENER/WASHER WITH DRYVIT GENESIS® BASE COAT. SUPPORT MINERAL WOOL INSULATION BOARD, AS REQUIRED, WHILE ADHESIVE DRIES.
5. MECHANICAL FASTENERS NOT SHOWN FOR CLARITY. REFER TO OWM 6, OWM 6a, AND OWM 7 FOR MECHANICAL FASTENER TYPE, LAYOUT, DIMENSION, AND WIND LOAD LIMITS.
6. ADDITIONAL FRAMING MEMBERS MAY BE REQUIRED TO ACCOMMODATE MECHANICAL FASTENER LAYOUT AND DIMENSIONAL REQUIREMENTS. COORDINATE WITH FRAMING SUB-CONTRACTOR.

$\frac{1}{2}$ " x  $\frac{1}{2}$ " CANT BEAD OF TREMCO DYMONIC 100. RASP INSULATION BOARD TO ACCOMMODATE AS NEEDED.



*The architecture, engineering, and design of the project using the Dryvit and Tremco products are the responsibility of the project's design professional. All products and systems must comply with local building codes and standards. This detail is for general information and guidance only and Dryvit and Tremco specifically disclaims any liability for the use of this detail. The project design professional determines, in its sole discretion, whether this detail or a functionally equivalent detail is best suited for the project. This detail is subject to change without notice. Contact Dryvit and Tremco to ensure you have the most recent version.*



Detail: Vertical Wall/Suspended Soffit Transition				File Name:	
Drawn by: HDE	Checked by: KK BD	Scale: NTS	Date: 11/2022	OMW 23	



Dryvit Technical Support: 800-556-7752