

Fedderlite® MP Panel System



Prefabricated, Insulated, Metal Backed, Lightweight,
Exterior Wall Panels

DS112

Fedderlite MP Panel System Installation Details



Table of Contents

Detail

COMPONENTS	FL MP - 01
PANEL SYSTEM	FL MP - 02
PANEL SYSTEM - HIGH IMPACT OPTION	FL MP - 03
PANEL SYSTEM - ADHERED SYSTEM	FL MP - 04
OPTION OVER SHEATHING	
STEP 1 - FEDDERLITE MP SUBSTRATE AND CHANNEL CONNECTION	FL MP - 05
STEP 2 - EPS INSULATION BOARD AND FASTENING PATTERN	FL MP - 06
STEP 3 - REINFORCING MESH AND BASE COAT APPLICATION	FL MP - 07
STEP 4 - PRIMER AND FINISH APPLICATION	FL MP - 08
TERMINATION AT FOUNDATION	FL MP - 09
HEAD	FL MP - 10
JAMB	FL MP - 11
SILL	FL MP - 12
PANEL VERTICAL JOINT	FL MP - 13
PANEL HORIZONTAL JOINT	FL MP - 14
INSIDE CORNER	FL MP - 15
OUTSIDE CORNER	FL MP - 16
TERMINATION AT PARAPET	FL MP - 17
TERMINATION AT GRAVEL STOP ROOF	FL MP - 18
FASCIA PANEL	FL MP - 19
WALL/ROOF INTERSECTION	FL MP - 20
SCREEN WALL	FL MP - 21
AESTHETIC REVEALS AND EPS SHAPES	FL MP - 22
DESIGN VALUES AND ATTACHMENT OPTIONS	FL MP - 23

NOTE:



DRYVIT MAKES NO REPRESENTATION REGARDING CONFORMITY OF ITS SUGGESTIONS TO MODEL BUILDING CODES, ENGINEERING CRITERIA, SPECIFIC APPLICATIONS, OR PROJECT LOCATIONS. ALL COMPONENTS INDICATED IN ILLUSTRATIONS, AS WELL AS OTHERS THAT MAY BE REQUIRED FOR THE INTEGRITY OF THE SYSTEM SHALL BE DESIGNED, DETAILED, AND ENGINEERED BY REPRESENTATIVES OF THE ARCHITECT, OWNER, OR CONTRACTOR TO BE IN CONFORMANCE WITH MODEL CODES, ARCHITECTURAL, AND ENGINEERING REQUIREMENTS PERTAINING TO SPECIFIC BUILDING PROJECTS.

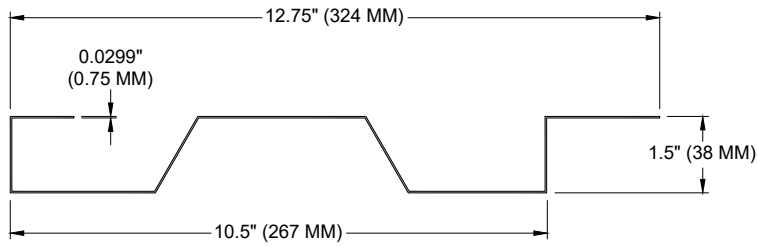
DRYVIT MAKES NO WARRANTY, EXPRESSED OR IMPLIED, AS TO THE ARCHITECTURAL DESIGN, ENGINEERING, OR WORKMANSHIP OF PROJECTS UTILIZING DRYVIT SYSTEMS OR PRODUCTS.

THE LIABILITIES OF DRYVIT SHALL BE AS STATED IN THE DRYVIT STANDARD WARRANTY. CONTACT DRYVIT FOR A FULL AND COMPLETE COPY OF THE WARRANTY.

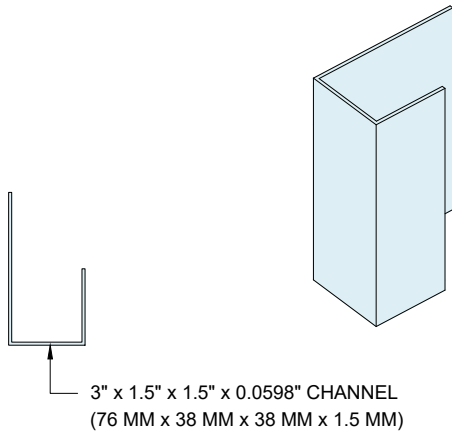
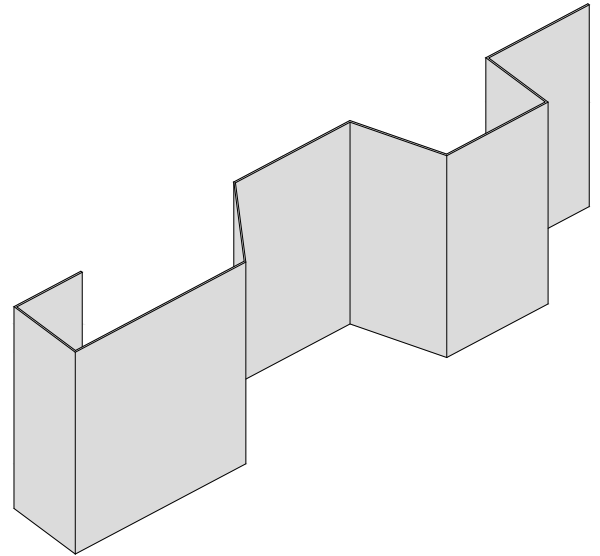
The architecture, engineering, and design of the project using the Dryvit products are the responsibility of the project's design professional. All products and systems must comply with local building codes and standards. This detail is for general information and guidance only and Dryvit specifically disclaims any liability for the use of this detail. The project design professional determines, in its sole discretion, whether this detail or a functionally equivalent detail is best suited for the project. This detail is subject to change without notice. Contact Dryvit to ensure you have the most recent version.

Fedderlite® MP Panel System

 Dryvit Technical Support: 800-556-7752	Detail: Table of Contents				File Name:	 TREMCO Construction Products Group
	Drawn by: EM	Checked by: RB	Scale: NTS	Date: 2/6/2023	FL MP - TOC	
www.tremcocpg.com						

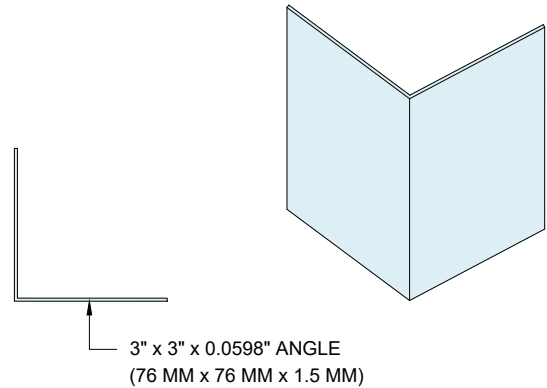


FEDDERLITE MP SUBSTRATE
22 GA (SEE NOTE 3)



3" x 1.5" x 1.5" x 0.0598" CHANNEL
(76 MM x 38 MM x 38 MM x 1.5 MM)

J-CHANNEL CLOSURE
16 GA (SEE NOTE 3)



3" x 3" x 0.0598" ANGLE
(76 MM x 76 MM x 1.5 MM)

STIFFENER/CONNECTOR BAR
16 GA (SEE NOTE 3)

NOTES:

1. STRUCTURAL ELEMENTS PER DESIGN ENGINEER.
2. FASTENER DESIGN PER APPROVED ENGINEERED SHOP DRAWINGS.
3. MATERIAL: ASTM A653 SS GRADE 33.

The architecture, engineering, and design of the project using the Dryvit products are the responsibility of the project's design professional. All products and systems must comply with local building codes and standards. This detail is for general information and guidance only and Dryvit specifically disclaims any liability for the use of this detail. The project design professional determines, in its sole discretion, whether this detail or a functionally equivalent detail is best suited for the project. This detail is subject to change without notice. Contact Dryvit to ensure you have the most recent version.

Fedderlite® MP Panel System

Detail: Components

File Name:

Drawn by: EM

Checked by: RB

Scale: NTS

Date: 2/6/2023

FL MP - 01

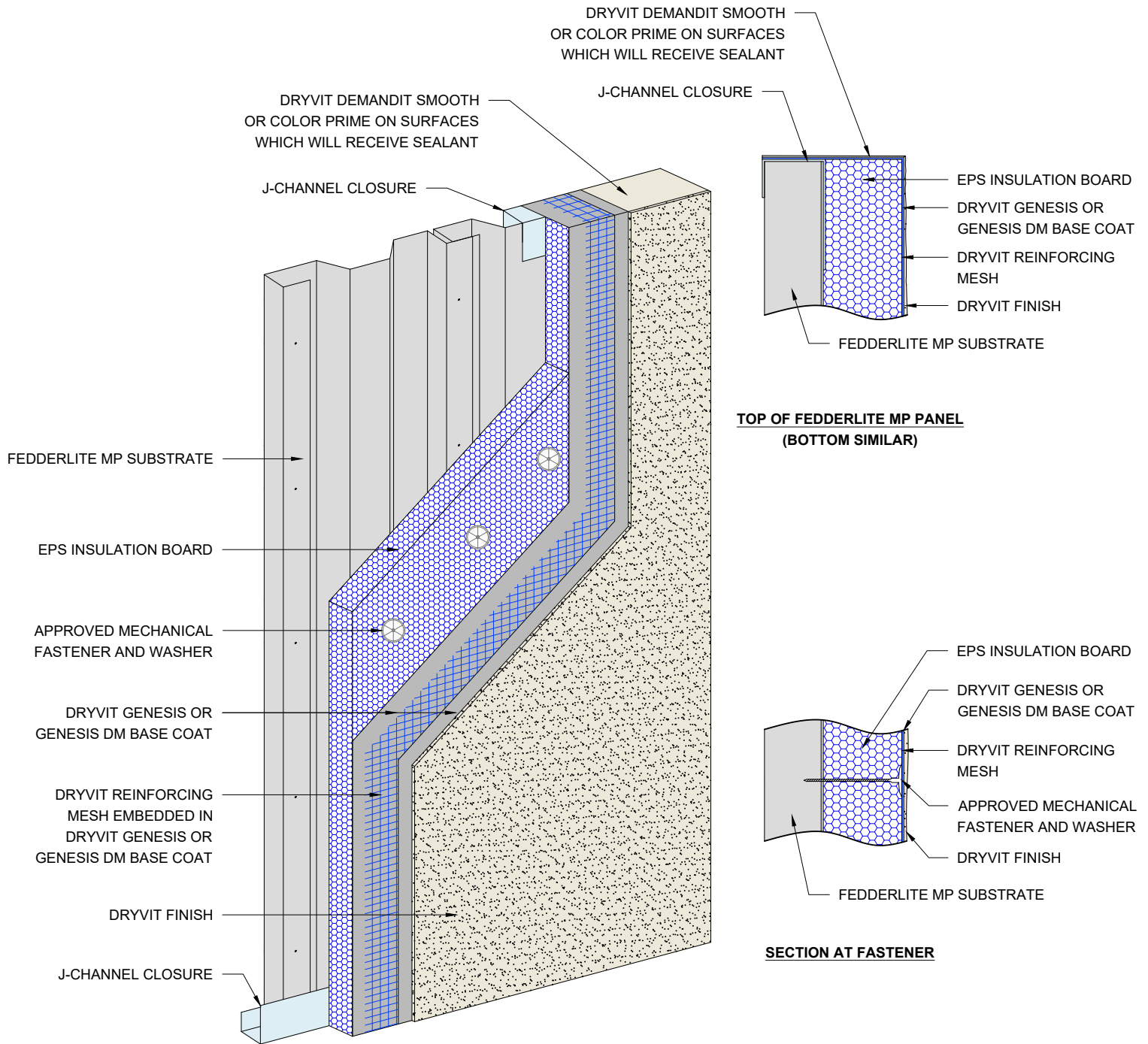


Dryvit Technical Support: 800-556-7752



Construction Products Group



www.tremcocpg.com

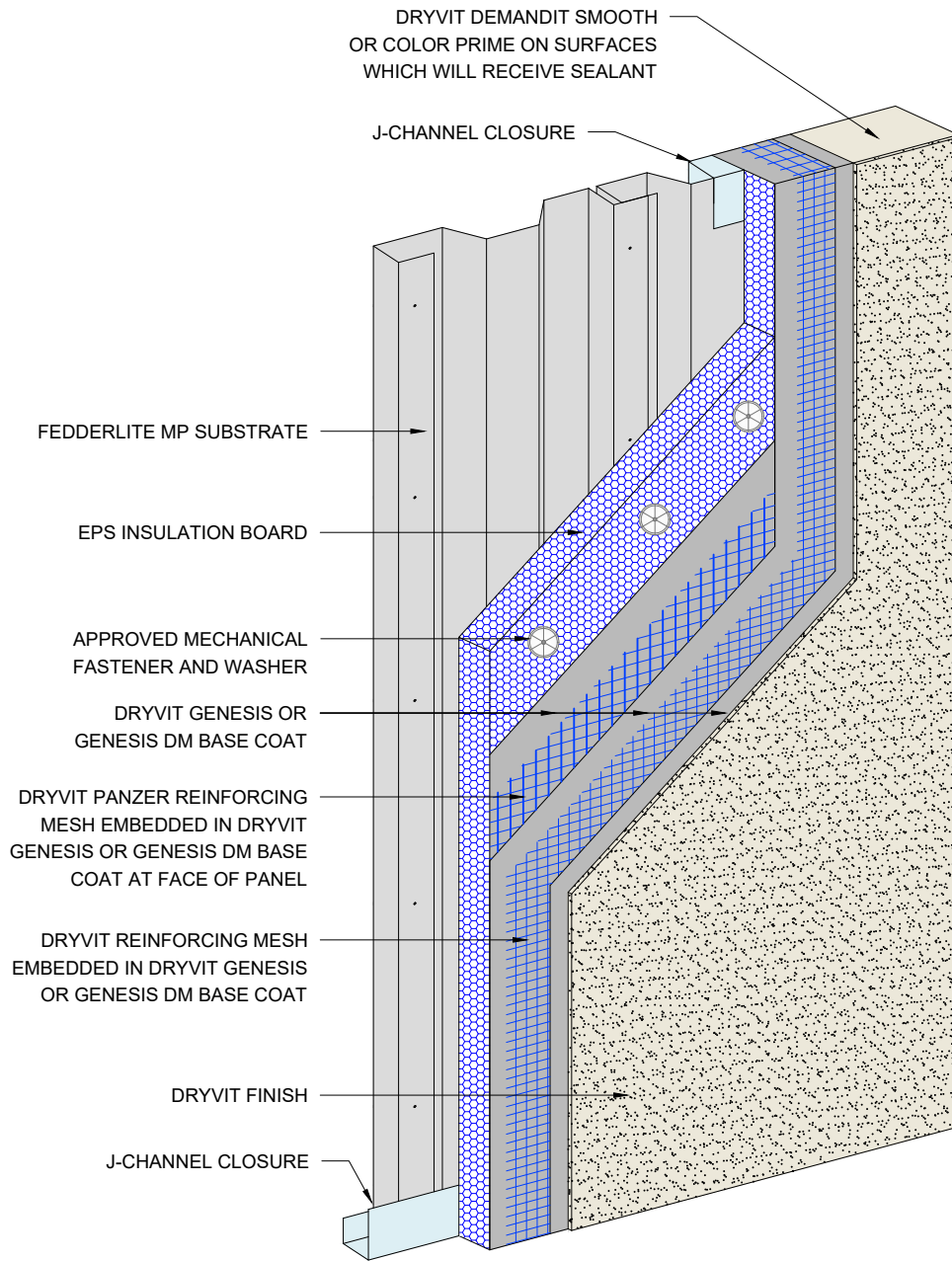


- NOTES:
1. DRYVIT RECOMMENDS THAT GROUND FLOOR APPLICATIONS AND ALL FACADES EXPOSED TO ABNORMAL STRESS, HIGH TRAFFIC, OR DELIBERATE IMPACT HAVE THE BASE COAT REINFORCED WITH PANZER® MESH PRIOR TO STANDARD OR STANDARD PLUS MESH. LOCATION OF HIGH IMPACT ZONES SHOULD BE INDICATED ON CONTRACT DRAWINGS.
 2. STRUCTURAL ELEMENTS PER DESIGN ENGINEER.
 3. FASTENER DESIGN PER APPROVED ENGINEERED SHOP DRAWINGS.

The architecture, engineering, and design of the project using the Dryvit products are the responsibility of the project's design professional. All products and systems must comply with local building codes and standards. This detail is for general information and guidance only and Dryvit specifically disclaims any liability for the use of this detail. The project design professional determines, in its sole discretion, whether this detail or a functionally equivalent detail is best suited for the project. This detail is subject to change without notice. Contact Dryvit to ensure you have the most recent version.

Fedderlite® MP Panel System

 Dryvit Technical Support: 800-556-7752	Detail: Panel System				File Name:		 Construction Products Group
	Drawn by: EM	Checked by: RB	Scale: NTS	Date: 2/6/2023	FL MP - 02		
www.tremcocpg.com							



NOTES:

1. DRYVIT RECOMMENDS THAT GROUND FLOOR APPLICATIONS AND ALL FACADES EXPOSED TO ABNORMAL STRESS, HIGH TRAFFIC, OR DELIBERATE IMPACT HAVE THE BASE COAT REINFORCED WITH PANZER® MESH PRIOR TO STANDARD OR STANDARD PLUS MESH. LOCATION OF HIGH IMPACT ZONES SHOULD BE INDICATED ON CONTRACT DRAWINGS.
2. STRUCTURAL ELEMENTS PER DESIGN ENGINEER.
3. FASTENER DESIGN PER APPROVED ENGINEERED SHOP DRAWINGS.

The architecture, engineering, and design of the project using the Dryvit products are the responsibility of the project's design professional. All products and systems must comply with local building codes and standards. This detail is for general information and guidance only and Dryvit specifically disclaims any liability for the use of this detail. The project design professional determines, in its sole discretion, whether this detail or a functionally equivalent detail is best suited for the project. This detail is subject to change without notice. Contact Dryvit to ensure you have the most recent version.

Fedderlite® MP Panel System

Detail: Panel System - High Impact Option

File Name:

Drawn by: EM

Checked by: RB

Scale: NTS

Date: 2/6/2023

FL MP - 03

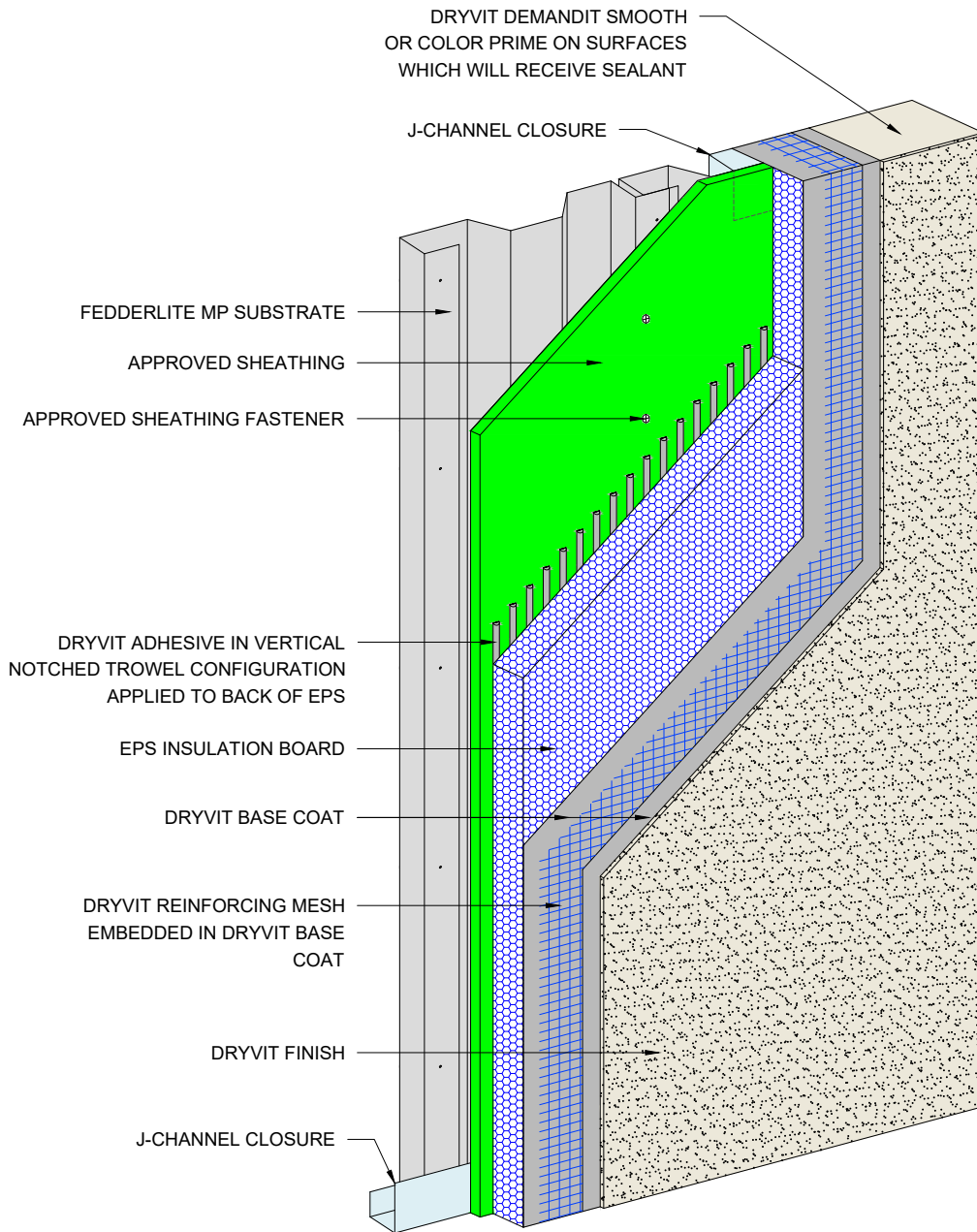


Dryvit Technical Support: 800-556-7752



Construction Products Group

www.tremcocpg.com



NOTES:

1. DRYVIT RECOMMENDS THAT GROUND FLOOR APPLICATIONS AND ALL FACADES EXPOSED TO ABNORMAL STRESS, HIGH TRAFFIC, OR DELIBERATE IMPACT HAVE THE BASE COAT REINFORCED WITH PANZER® MESH PRIOR TO STANDARD OR STANDARD PLUS MESH. LOCATION OF HIGH IMPACT ZONES SHOULD BE INDICATED ON CONTRACT DRAWINGS.
2. STRUCTURAL ELEMENTS PER DESIGN ENGINEER.
3. FASTENER DESIGN PER APPROVED ENGINEERED SHOP DRAWINGS.

The architecture, engineering, and design of the project using the Dryvit products are the responsibility of the project's design professional. All products and systems must comply with local building codes and standards. This detail is for general information and guidance only and Dryvit specifically disclaims any liability for the use of this detail. The project design professional determines, in its sole discretion, whether this detail or a functionally equivalent detail is best suited for the project. This detail is subject to change without notice. Contact Dryvit to ensure you have the most recent version.

Fedderlite® MP Panel System

Detail: Panel System - Adhered System Option over Sheathing

File Name:

Drawn by: EM

Checked by: RB

Scale: NTS

Date: 2/6/2023

FL MP - 04



Dryvit Technical Support: 800-556-7752

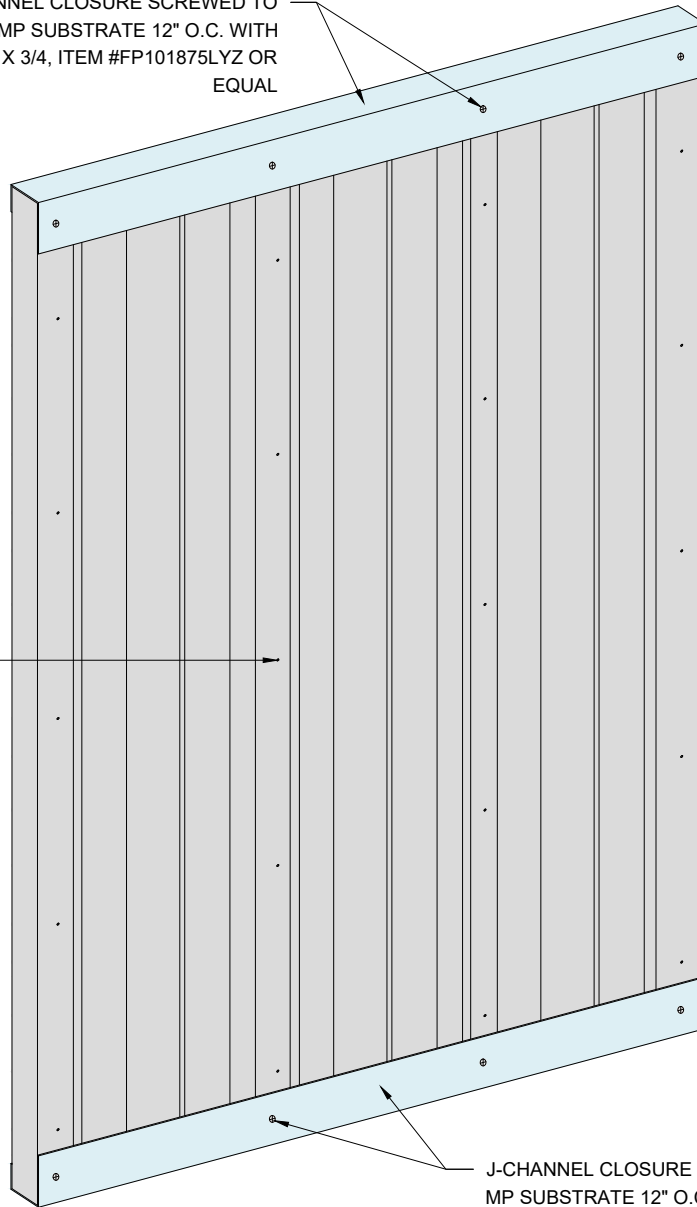


Construction Products Group

www.tremcocpg.com

J-CHANNEL CLOSURE SCREWED TO
FEDDERLITE MP SUBSTRATE 12" O.C. WITH
GRABBER 10 X 3/4, ITEM #FP101875LYZ OR
EQUAL

FEDDERLITE MP SUBSTRATE TO
BE SECURED 12" O.C. WITH
GRABBER 7 X 9/16, ITEM #31V OR
EQUAL



J-CHANNEL CLOSURE SCREWED TO FEDDERLITE
MP SUBSTRATE 12" O.C. WITH GRABBER 10 X 3/4,
ITEM #FP101875LYZ OR EQUAL

NOTES:

1. DRYVIT RECOMMENDS THAT GROUND FLOOR APPLICATIONS AND ALL FACADES EXPOSED TO ABNORMAL STRESS, HIGH TRAFFIC, OR DELIBERATE IMPACT HAVE THE BASE COAT REINFORCED WITH PANZER® MESH PRIOR TO STANDARD OR STANDARD PLUS MESH. LOCATION OF HIGH IMPACT ZONES SHOULD BE INDICATED ON CONTRACT DRAWINGS.
2. STRUCTURAL ELEMENTS PER DESIGN ENGINEER.
3. FASTENER DESIGN PER APPROVED ENGINEERED SHOP DRAWINGS.

The architecture, engineering, and design of the project using the Dryvit products are the responsibility of the project's design professional. All products and systems must comply with local building codes and standards. This detail is for general information and guidance only and Dryvit specifically disclaims any liability for the use of this detail. The project design professional determines, in its sole discretion, whether this detail or a functionally equivalent detail is best suited for the project. This detail is subject to change without notice. Contact Dryvit to ensure you have the most recent version.

Fedderlite® MP Panel System

Detail: Step 1 - Fedderlite MP Substrate and Channel Connection

File Name:

Drawn by: EM

Checked by: RB

Scale: NTS

Date: 2/6/2023

FL MP - 05

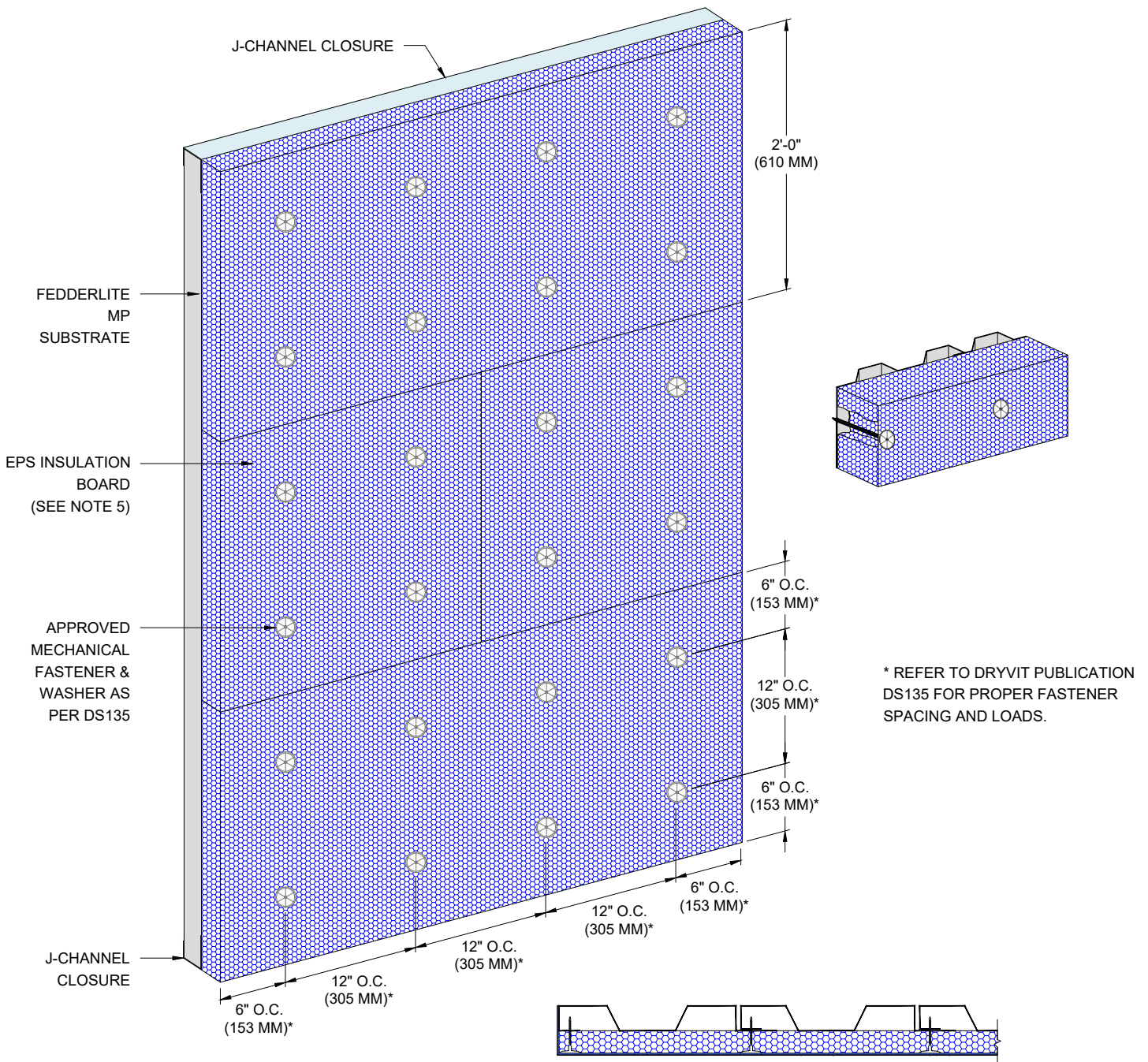


Dryvit Technical Support: 800-556-7752



Construction Products Group

www.tremcocpg.com



NOTES:

1. DRYVIT RECOMMENDS THAT GROUND FLOOR APPLICATIONS AND ALL FACADES EXPOSED TO ABNORMAL STRESS, HIGH TRAFFIC, OR DELIBERATE IMPACT HAVE THE BASE COAT REINFORCED WITH PANZER® MESH PRIOR TO STANDARD OR STANDARD PLUS MESH. LOCATION OF HIGH IMPACT ZONES SHOULD BE INDICATED ON CONTRACT DRAWINGS.
2. STRUCTURAL ELEMENTS PER DESIGN ENGINEER.
3. FASTENER DESIGN PER APPROVED ENGINEERED SHOP DRAWINGS.
4. REFER TO DRYVIT PUBLICATION DS135 FOR ACCEPTABLE FASTENING PATTERNS. ABOVE DETAIL IS BASED ON PATTERN "A". FASTENER PATTERNS AND DATA PROVIDED BY WIND-LOCK CORPORATION AND ITW-BUILDEX. MAXIMUM WIND LOAD PRESSURE IS DEPENDENT ON WASHER / FASTENER TYPE, PATTERN AND INSULATION BOARD THICKNESS.
5. OFFSET VERTICAL EPS JOINTS FOR PANELS WIDER THAN 4'-0" (1.2 M).
6. REFER TO DETAIL FL MP - 04 FOR ADHERED SYSTEM OPTION.

The architecture, engineering, and design of the project using the Dryvit products are the responsibility of the project's design professional. All products and systems must comply with local building codes and standards. This detail is for general information and guidance only and Dryvit specifically disclaims any liability for the use of this detail. The project design professional determines, in its sole discretion, whether this detail or a functionally equivalent detail is best suited for the project. This detail is subject to change without notice. Contact Dryvit to ensure you have the most recent version.

Fedderlite® MP Panel System

Detail: Step 2 - EPS Insulation Board and Fastening Pattern

File Name:

Drawn by: EM

Checked by: RB

Scale: NTS

Date: 2/6/2023

FL MP - 06

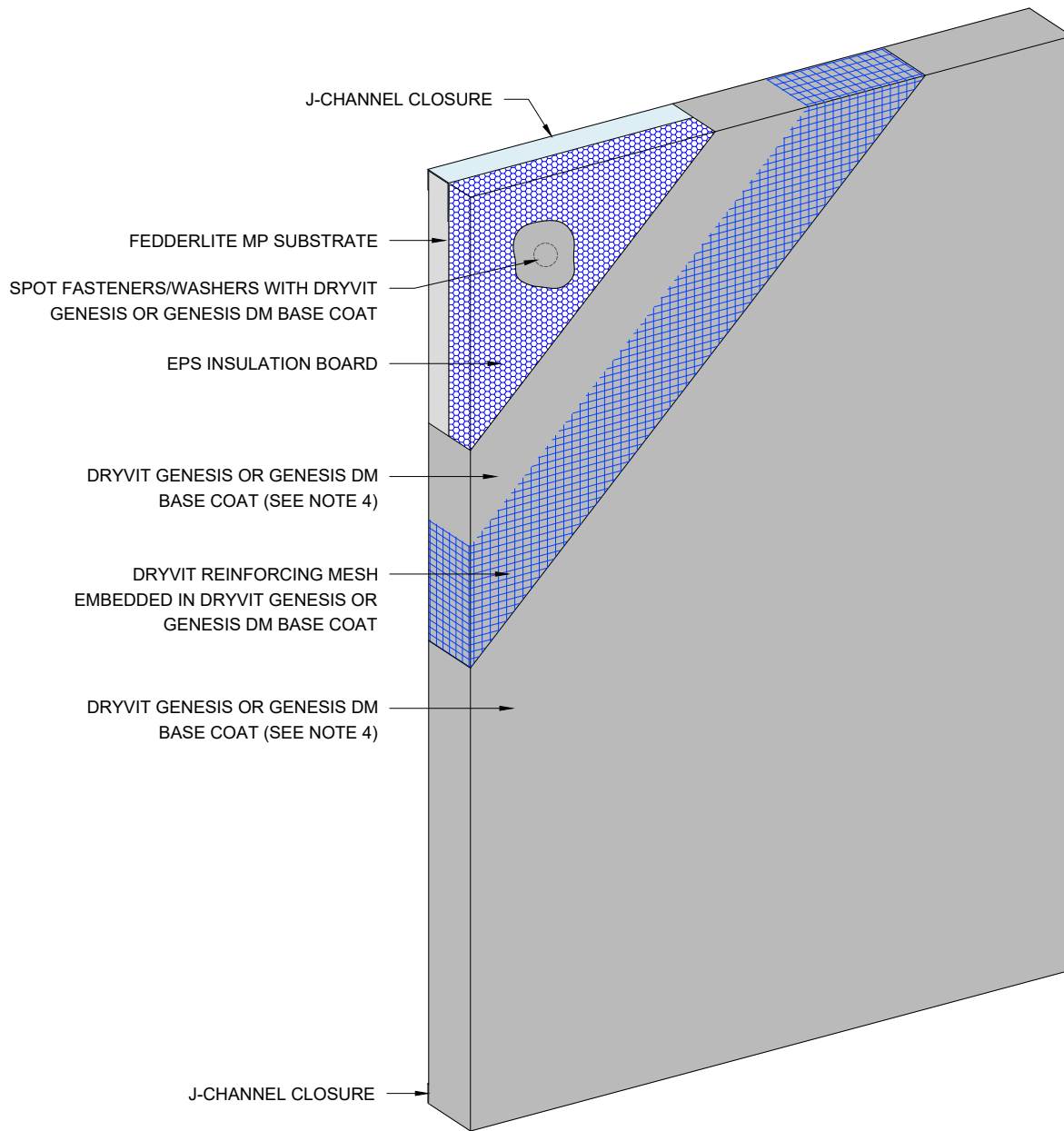


Dryvit Technical Support: 800-556-7752

www.tremcoepg.com



Construction Products Group



NOTES:

1. DRYVIT RECOMMENDS THAT GROUND FLOOR APPLICATIONS AND ALL FACADES EXPOSED TO ABNORMAL STRESS, HIGH TRAFFIC, OR DELIBERATE IMPACT HAVE THE BASE COAT REINFORCED WITH PANZER® MESH PRIOR TO STANDARD OR STANDARD PLUS MESH. LOCATION OF HIGH IMPACT ZONES SHOULD BE INDICATED ON CONTRACT DRAWINGS.
2. STRUCTURAL ELEMENTS PER DESIGN ENGINEER.
3. FASTENER DESIGN PER APPROVED ENGINEERED SHOP DRAWINGS.
4. ALL FEDDERLITE MP MATERIAL TO RECEIVE DRYVIT LAMINA SHALL BE CLEANED WITH A DEGREASING AGENT.

The architecture, engineering, and design of the project using the Dryvit products are the responsibility of the project's design professional. All products and systems must comply with local building codes and standards. This detail is for general information and guidance only and Dryvit specifically disclaims any liability for the use of this detail. The project design professional determines, in its sole discretion, whether this detail or a functionally equivalent detail is best suited for the project. This detail is subject to change without notice. Contact Dryvit to ensure you have the most recent version.

Fedderlite® MP Panel System

Detail: Step 3 - Reinforcing Mesh and Base Coat Application

File Name:

Drawn by: EM

Checked by: RB

Scale: NTS

Date: 2/6/2023

FL MP - 07

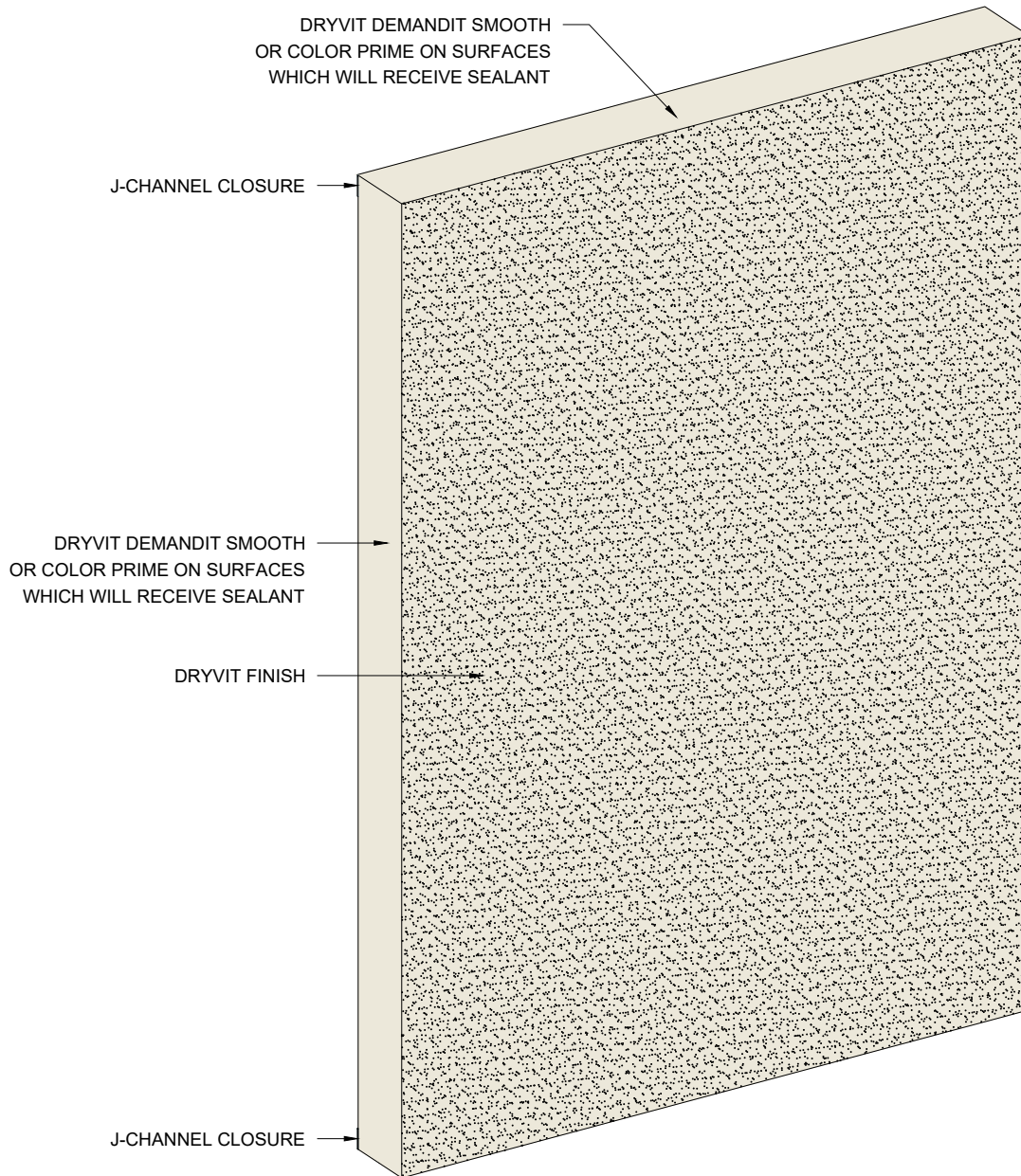


Dryvit Technical Support: 800-556-7752



Construction Products Group

www.tremcocpg.com





NOTES:

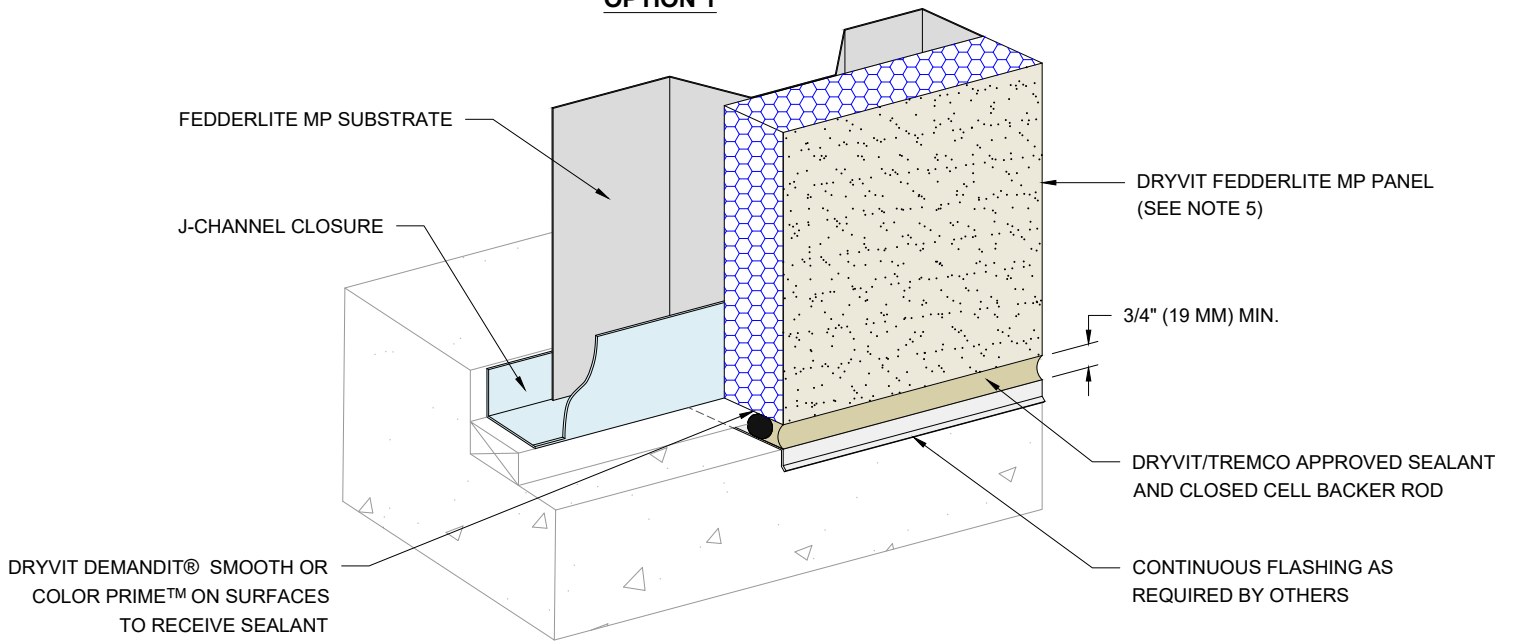
1. DRYVIT RECOMMENDS THAT GROUND FLOOR APPLICATIONS AND ALL FACADES EXPOSED TO ABNORMAL STRESS, HIGH TRAFFIC, OR DELIBERATE IMPACT HAVE THE BASE COAT REINFORCED WITH PANZER® MESH PRIOR TO STANDARD OR STANDARD PLUS MESH. LOCATION OF HIGH IMPACT ZONES SHOULD BE INDICATED ON CONTRACT DRAWINGS.
2. STRUCTURAL ELEMENTS PER DESIGN ENGINEER.
3. FASTENER DESIGN PER APPROVED ENGINEERED SHOP DRAWINGS.

The architecture, engineering, and design of the project using the Dryvit products are the responsibility of the project's design professional. All products and systems must comply with local building codes and standards. This detail is for general information and guidance only and Dryvit specifically disclaims any liability for the use of this detail. The project design professional determines, in its sole discretion, whether this detail or a functionally equivalent detail is best suited for the project. This detail is subject to change without notice. Contact Dryvit to ensure you have the most recent version.

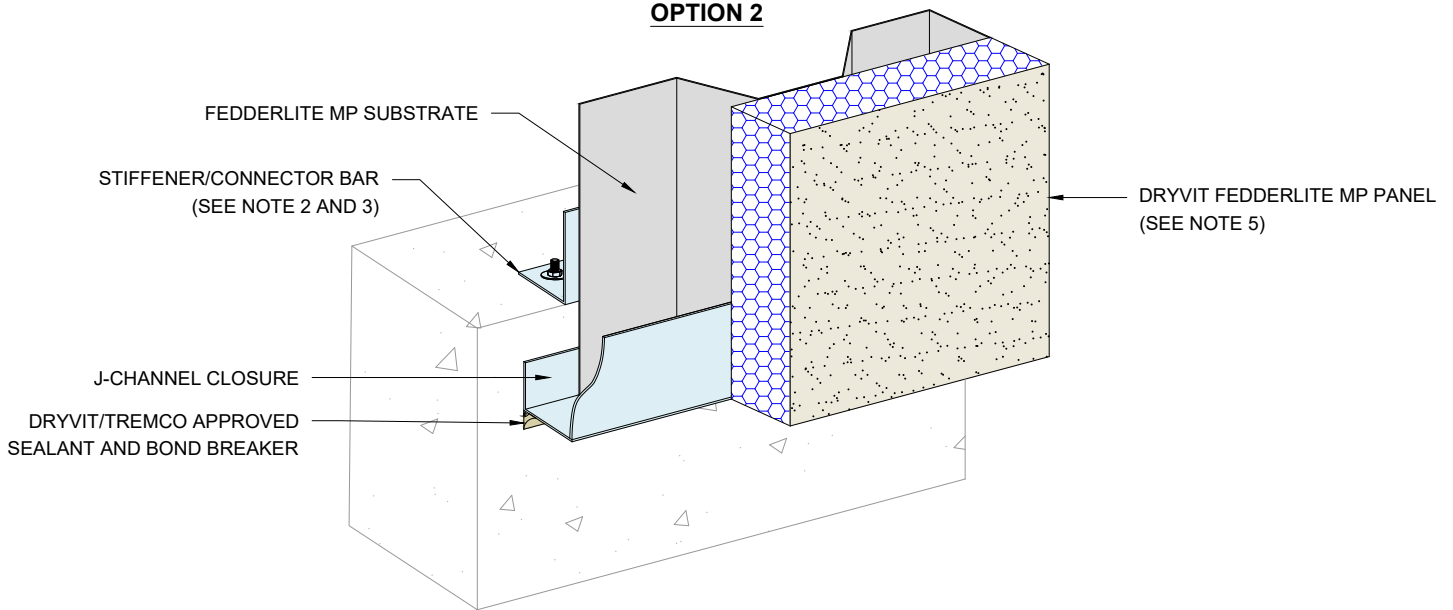
Fedderlite® MP Panel System

 Dryvit Technical Support: 800-556-7752	Detail: Step 4 - Primer and Finish Application				File Name:	 Construction Products Group
	Drawn by: EM	Checked by: RB	Scale: NTS	Date: 2/6/2023	FL MP - 08	
www.tremcocpg.com						

OPTION 1



OPTION 2





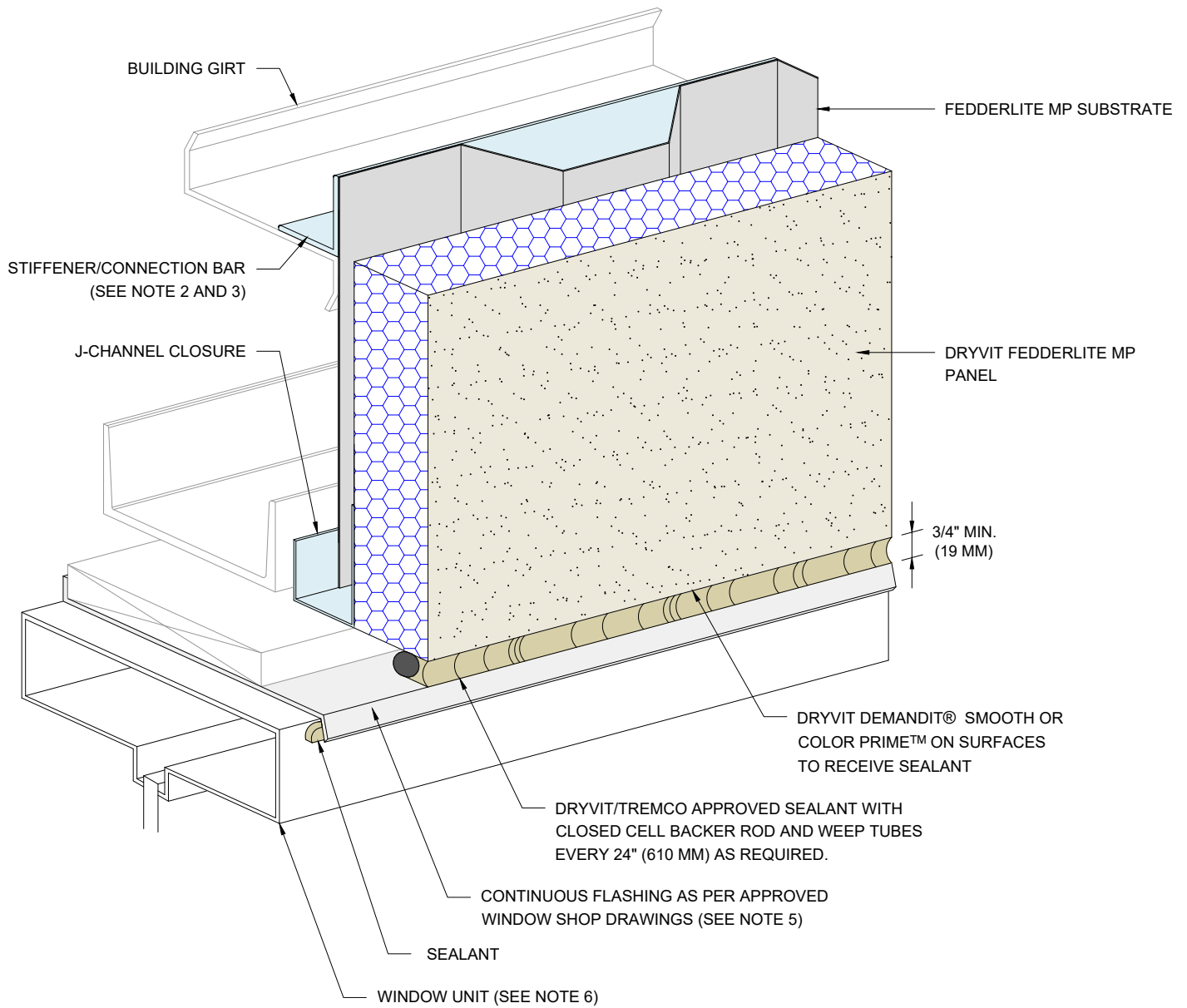
NOTES:

1. DRYVIT RECOMMENDS THAT GROUND FLOOR APPLICATIONS AND ALL FACADES EXPOSED TO ABNORMAL STRESS, HIGH TRAFFIC, OR DELIBERATE IMPACT HAVE THE BASE COAT REINFORCED WITH PANZER® MESH PRIOR TO STANDARD OR STANDARD PLUS MESH. LOCATION OF HIGH IMPACT ZONES SHOULD BE INDICATED ON CONTRACT DRAWINGS.
2. STRUCTURAL ELEMENTS PER DESIGN ENGINEER.
3. FASTENER DESIGN PER APPROVED ENGINEERED SHOP DRAWINGS.
4. ALL FEDDERLITE MP MATERIAL TO RECEIVE DRYVIT LAMINA SHALL BE CLEANED WITH A DEGREASING AGENT.
5. MAINTAIN 6" (152 MM) MINIMUM CLEARANCE FROM GRADE CONDITIONS.

The architecture, engineering, and design of the project using the Dryvit products are the responsibility of the project's design professional. All products and systems must comply with local building codes and standards. This detail is for general information and guidance only and Dryvit specifically disclaims any liability for the use of this detail. The project design professional determines, in its sole discretion, whether this detail or a functionally equivalent detail is best suited for the project. This detail is subject to change without notice. Contact Dryvit to ensure you have the most recent version.

Fedderlite® MP Panel System

 Dryvit Technical Support: 800-556-7752	Detail: Termination at Foundation				File Name:		 Construction Products Group
	Drawn by: EM	Checked by: RB	Scale: NTS	Date: 2/6/2023	FL MP - 09		
www.tremcocpg.com							





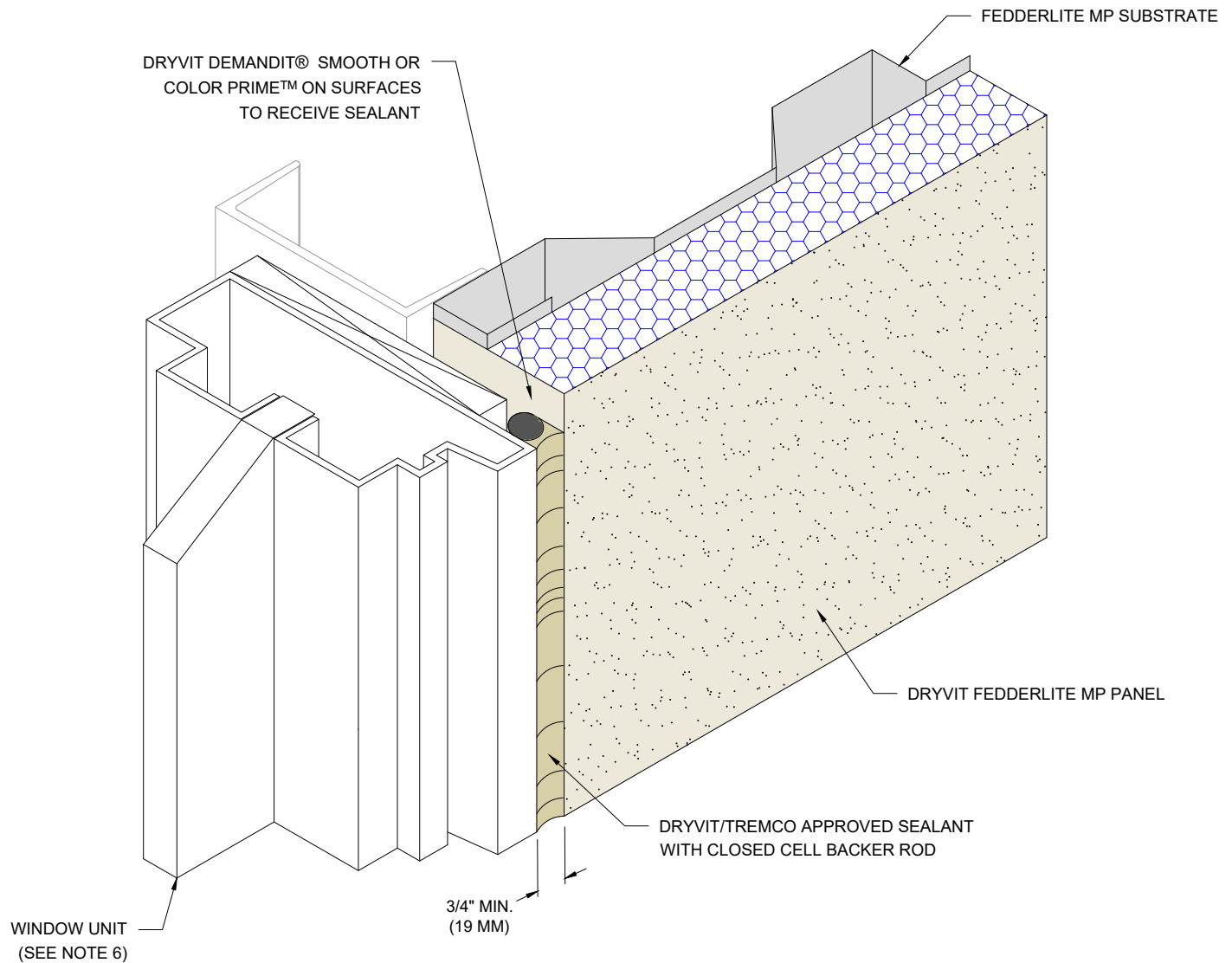
NOTES:

1. DRYVIT RECOMMENDS THAT GROUND FLOOR APPLICATIONS AND ALL FACADES EXPOSED TO ABNORMAL STRESS, HIGH TRAFFIC, OR DELIBERATE IMPACT HAVE THE BASE COAT REINFORCED WITH PANZER® MESH PRIOR TO STANDARD OR STANDARD PLUS MESH. LOCATION OF HIGH IMPACT ZONES SHOULD BE INDICATED ON CONTRACT DRAWINGS.
2. STRUCTURAL ELEMENTS PER DESIGN ENGINEER.
3. FASTENER DESIGN PER APPROVED ENGINEERED SHOP DRAWINGS.
4. ALL FEDDERLITE MP MATERIAL TO RECEIVE DRYVIT LAMINA SHALL BE CLEANED WITH A DEGREASING AGENT.
5. INSTALL WINDOW UNIT AND ASSOCIATED FLASHINGS PER MANUFACTURER'S RECOMMENDATIONS, CODE REQUIREMENTS AND PROJECT DOCUMENTS.
6. FEDDERLITE MP IS NOT INTENDED TO CARRY ANY LOADS FOR WINDOWS, DOORS, EQUIPMENT, ETC.

The architecture, engineering, and design of the project using the Dryvit products are the responsibility of the project's design professional. All products and systems must comply with local building codes and standards. This detail is for general information and guidance only and Dryvit specifically disclaims any liability for the use of this detail. The project design professional determines, in its sole discretion, whether this detail or a functionally equivalent detail is best suited for the project. This detail is subject to change without notice. Contact Dryvit to ensure you have the most recent version.

Fedderlite® MP Panel System

 Dryvit Technical Support: 800-556-7752	Detail: Head				File Name:		 Construction Products Group
	Drawn by: EM	Checked by: RB	Scale: NTS	Date: 2/6/2023	FL MP - 10		
www.tremcocpg.com							





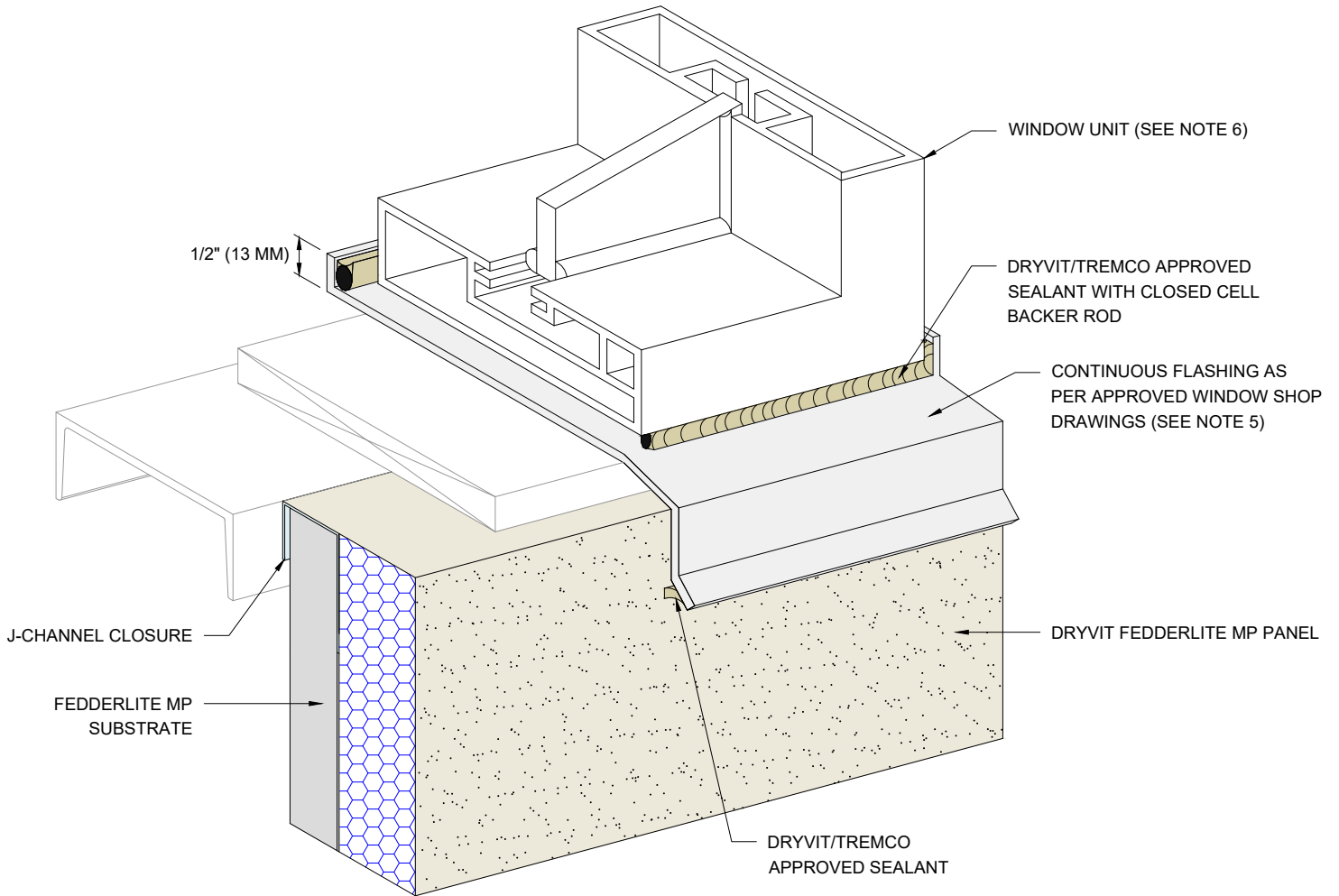
NOTES:

1. DRYVIT RECOMMENDS THAT GROUND FLOOR APPLICATIONS AND ALL FACADES EXPOSED TO ABNORMAL STRESS, HIGH TRAFFIC, OR DELIBERATE IMPACT HAVE THE BASE COAT REINFORCED WITH PANZER® MESH PRIOR TO STANDARD OR STANDARD PLUS MESH. LOCATION OF HIGH IMPACT ZONES SHOULD BE INDICATED ON CONTRACT DRAWINGS.
2. STRUCTURAL ELEMENTS PER DESIGN ENGINEER.
3. FASTENER DESIGN PER APPROVED ENGINEERED SHOP DRAWINGS.
4. ALL FEDDERLITE MP MATERIAL TO RECEIVE DRYVIT LAMINA SHALL BE CLEANED WITH A DEGREASING AGENT.
5. INSTALL WINDOW UNIT AND ASSOCIATED FLASHINGS PER MANUFACTURER'S RECOMMENDATIONS, CODE REQUIREMENTS AND PROJECT DOCUMENTS.
6. FEDDERLITE MP IS NOT INTENDED TO CARRY ANY LOADS FOR WINDOWS, DOORS, EQUIPMENT, ETC.

The architecture, engineering, and design of the project using the Dryvit products are the responsibility of the project's design professional. All products and systems must comply with local building codes and standards. This detail is for general information and guidance only and Dryvit specifically disclaims any liability for the use of this detail. The project design professional determines, in its sole discretion, whether this detail or a functionally equivalent detail is best suited for the project. This detail is subject to change without notice. Contact Dryvit to ensure you have the most recent version.

Fedderlite® MP Panel System

 Dryvit Technical Support: 800-556-7752	Detail: Jamb				File Name:		 Construction Products Group
	Drawn by: EM	Checked by: RB	Scale: NTS	Date: 2/6/2023	FL MP - 11		
www.tremcocpg.com							





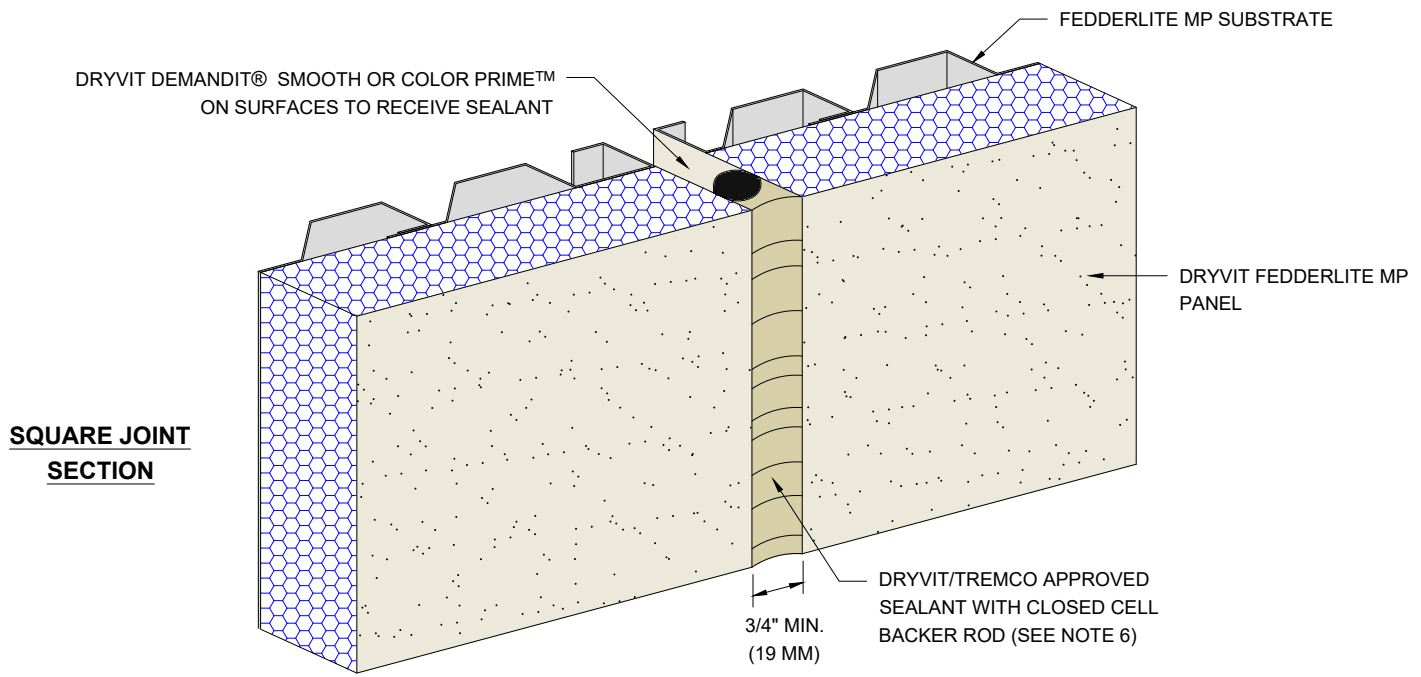
NOTES:

1. DRYVIT RECOMMENDS THAT GROUND FLOOR APPLICATIONS AND ALL FACADES EXPOSED TO ABNORMAL STRESS, HIGH TRAFFIC, OR DELIBERATE IMPACT HAVE THE BASE COAT REINFORCED WITH PANZER® MESH PRIOR TO STANDARD OR STANDARD PLUS MESH. LOCATION OF HIGH IMPACT ZONES SHOULD BE INDICATED ON CONTRACT DRAWINGS.
2. STRUCTURAL ELEMENTS PER DESIGN ENGINEER.
3. FASTENER DESIGN PER APPROVED ENGINEERED SHOP DRAWINGS.
4. ALL FEDDERLITE MP MATERIAL TO RECEIVE DRYVIT LAMINA SHALL BE CLEANED WITH A DEGREASING AGENT.
5. INSTALL WINDOW UNIT AND ASSOCIATED FLASHINGS PER MANUFACTURER'S RECOMMENDATIONS, CODE REQUIREMENTS AND PROJECT DOCUMENTS.
6. FEDDERLITE MP IS NOT INTENDED TO CARRY ANY LOADS FOR WINDOWS, DOORS, EQUIPMENT, ETC.

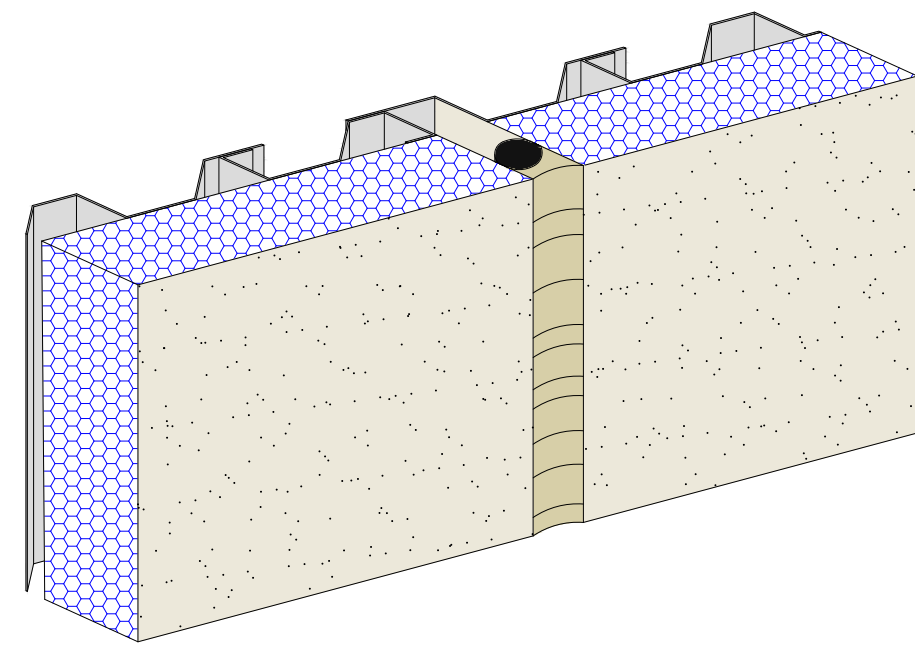
The architecture, engineering, and design of the project using the Dryvit products are the responsibility of the project's design professional. All products and systems must comply with local building codes and standards. This detail is for general information and guidance only and Dryvit specifically disclaims any liability for the use of this detail. The project design professional determines, in its sole discretion, whether this detail or a functionally equivalent detail is best suited for the project. This detail is subject to change without notice. Contact Dryvit to ensure you have the most recent version.

Fedderlite® MP Panel System

 Dryvit Technical Support: 800-556-7752	Detail: Sill				File Name:		 Construction Products Group
	Drawn by: EM	Checked by: RB	Scale: NTS	Date: 2/6/2023	FL MP - 12		
www.tremcocpg.com							



SQUARE JOINT SECTION





OVERLAPPING JOINT SECTION

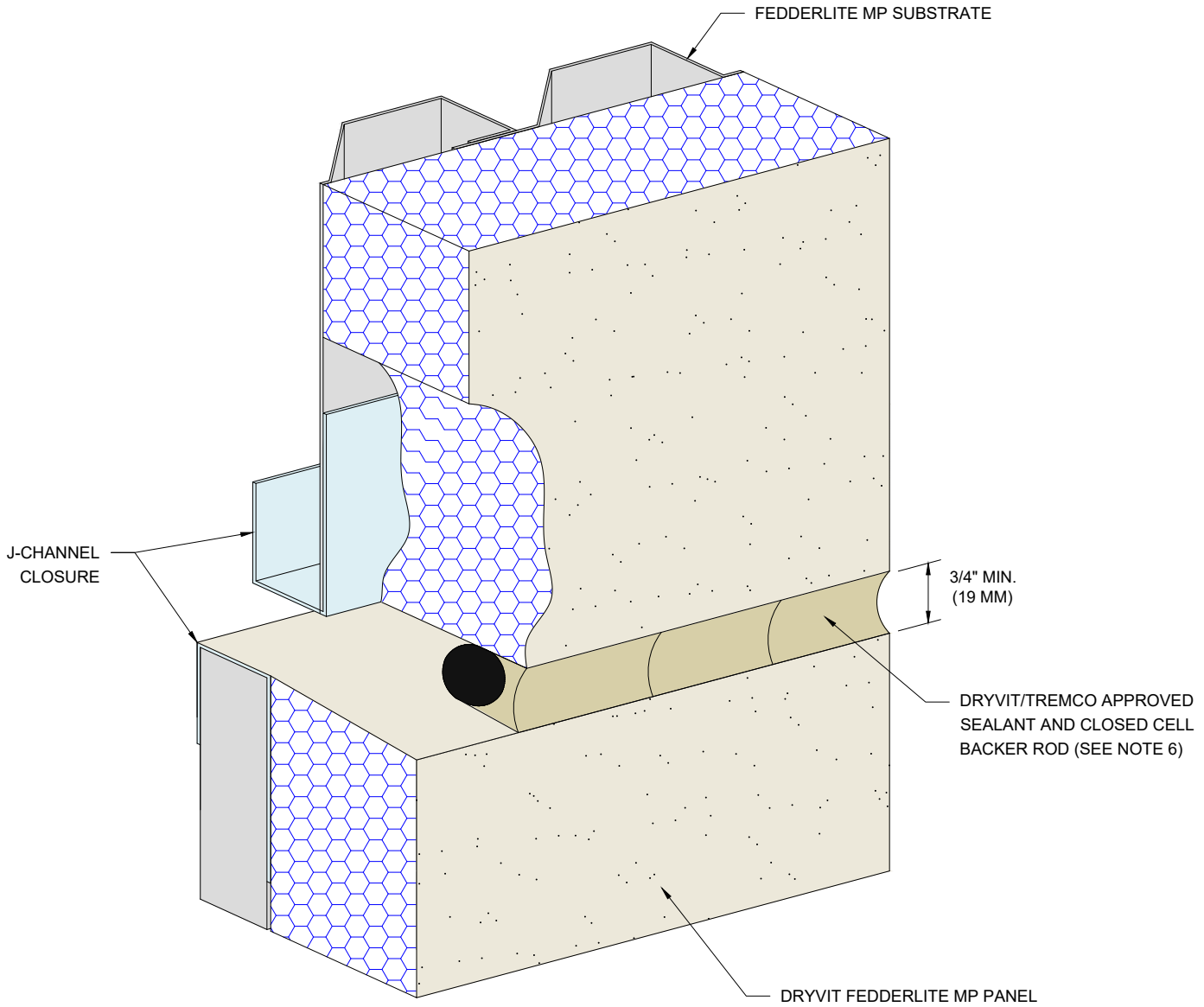
NOTES:

1. DRYVIT RECOMMENDS THAT GROUND FLOOR APPLICATIONS AND ALL FACADES EXPOSED TO ABNORMAL STRESS, HIGH TRAFFIC, OR DELIBERATE IMPACT HAVE THE BASE COAT REINFORCED WITH PANZER® MESH PRIOR TO STANDARD OR STANDARD PLUS MESH. LOCATION OF HIGH IMPACT ZONES SHOULD BE INDICATED ON CONTRACT DRAWINGS.
2. STRUCTURAL ELEMENTS PER DESIGN ENGINEER.
3. FASTENER DESIGN PER APPROVED ENGINEERED SHOP DRAWINGS.
4. ALL FEDDERLITE MP MATERIAL TO RECEIVE DRYVIT LAMINA SHALL BE CLEANED WITH A DEGREASING AGENT.
5. J-CHANNEL AT TOP AND BOTTOM OF PANEL NOT SHOWN. SECTION VIEW ONLY.
6. HONOR ALL BUILDING EXPANSION JOINTS AND SIZE ACCORDINGLY AS PER SHOP DRAWINGS.

The architecture, engineering, and design of the project using the Dryvit products are the responsibility of the project's design professional. All products and systems must comply with local building codes and standards. This detail is for general information and guidance only and Dryvit specifically disclaims any liability for the use of this detail. The project design professional determines, in its sole discretion, whether this detail or a functionally equivalent detail is best suited for the project. This detail is subject to change without notice. Contact Dryvit to ensure you have the most recent version.

Fedderlite® MP Panel System

 Dryvit Technical Support: 800-556-7752	Detail: Panel Vertical Joint				File Name:		 Construction Products Group
	Drawn by: EM	Checked by: RB	Scale: NTS	Date: 2/6/2023	FL MP - 13		
www.tremcocpg.com							





NOTES:

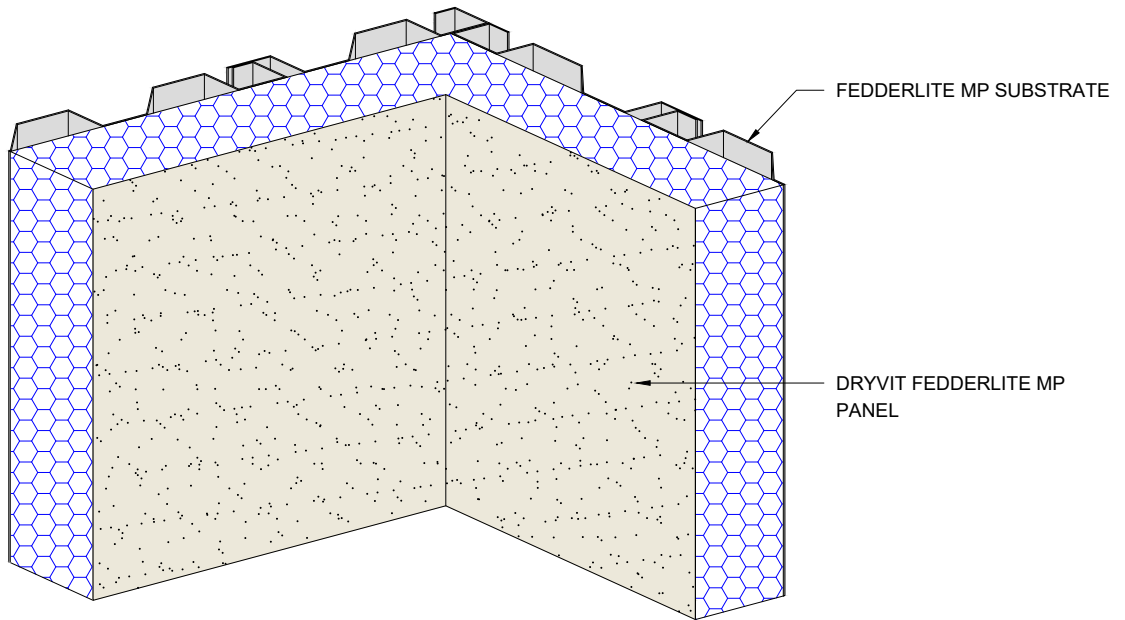
1. DRYVIT RECOMMENDS THAT GROUND FLOOR APPLICATIONS AND ALL FACADES EXPOSED TO ABNORMAL STRESS, HIGH TRAFFIC, OR DELIBERATE IMPACT HAVE THE BASE COAT REINFORCED WITH PANZER® MESH PRIOR TO STANDARD OR STANDARD PLUS MESH. LOCATION OF HIGH IMPACT ZONES SHOULD BE INDICATED ON CONTRACT DRAWINGS.
2. STRUCTURAL ELEMENTS PER DESIGN ENGINEER.
3. FASTENER DESIGN PER APPROVED ENGINEERED SHOP DRAWINGS.
4. ALL FEDDERLITE MP MATERIAL TO RECEIVE DRYVIT LAMINA SHALL BE CLEANED WITH A DEGREASING AGENT.
5. J-CHANNEL AT BOTTOM OF PANEL NOT SHOWN. SECTION VIEW ONLY.
6. HONOR ALL BUILDING EXPANSION JOINTS AND SIZE ACCORDINGLY AS PER SHOP DRAWINGS.

The architecture, engineering, and design of the project using the Dryvit products are the responsibility of the project's design professional. All products and systems must comply with local building codes and standards. This detail is for general information and guidance only and Dryvit specifically disclaims any liability for the use of this detail. The project design professional determines, in its sole discretion, whether this detail or a functionally equivalent detail is best suited for the project. This detail is subject to change without notice. Contact Dryvit to ensure you have the most recent version.

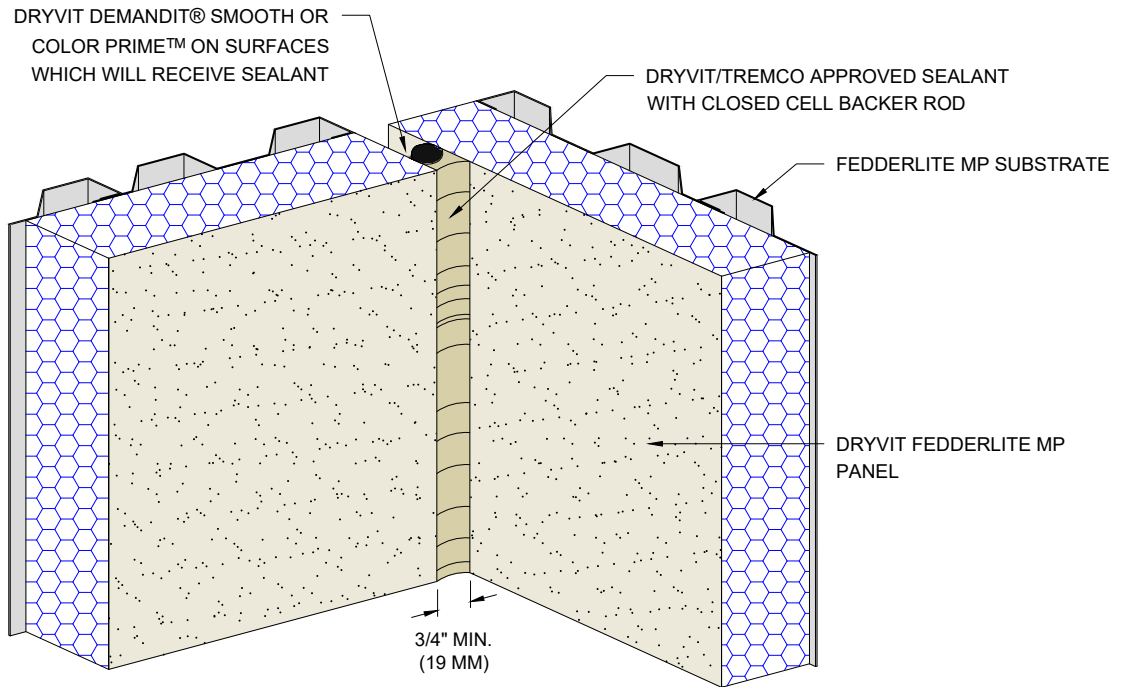
Fedderlite® MP Panel System

 Dryvit Technical Support: 800-556-7752	Detail: Panel Horizontal Joint				File Name:		 Construction Products Group
	Drawn by: EM	Checked by: RB	Scale: NTS	Date: 2/6/2023	FL MP - 14		
www.tremcocpg.com							

**PRE-ENGINEERED
INSIDE CORNER PANEL
SECTION**



**INSIDE CORNER
PANEL JOINT
SECTION**





NOTES:

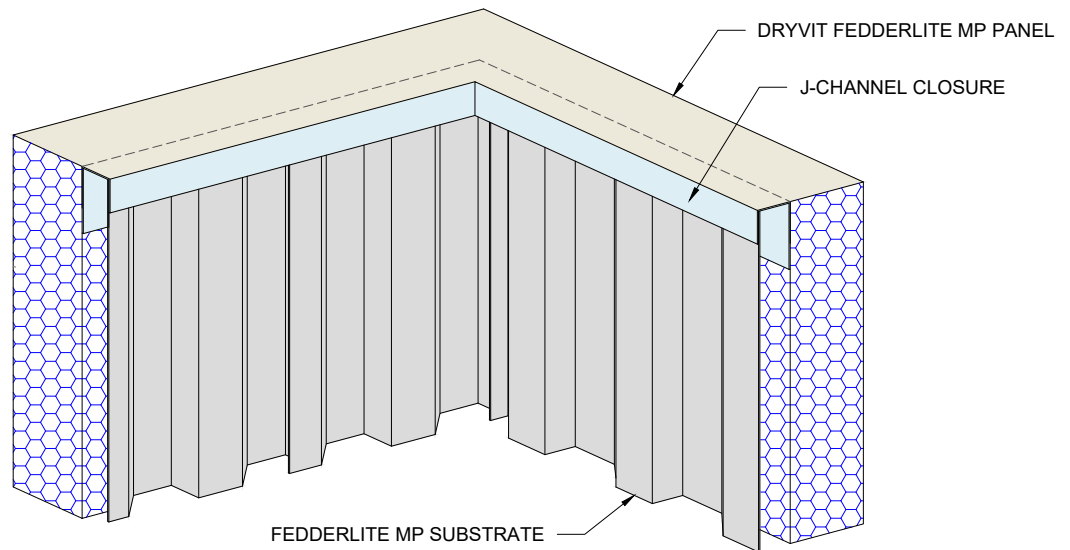
1. DRYVIT RECOMMENDS THAT GROUND FLOOR APPLICATIONS AND ALL FACADES EXPOSED TO ABNORMAL STRESS, HIGH TRAFFIC, OR DELIBERATE IMPACT HAVE THE BASE COAT REINFORCED WITH PANZER® MESH PRIOR TO STANDARD OR STANDARD PLUS MESH. LOCATION OF HIGH IMPACT ZONES SHOULD BE INDICATED ON CONTRACT DRAWINGS.
2. STRUCTURAL ELEMENTS PER DESIGN ENGINEER.
3. FASTENER DESIGN PER APPROVED ENGINEERED SHOP DRAWINGS.
4. ALL FEDDERLITE MP MATERIAL TO RECEIVE DRYVIT LAMINA SHALL BE CLEANED WITH A DEGREASING AGENT.
5. J-CHANNEL AT TOP AND BOTTOM OF PANEL NOT SHOWN. SECTION VIEW ONLY.

The architecture, engineering, and design of the project using the Dryvit products are the responsibility of the project's design professional. All products and systems must comply with local building codes and standards. This detail is for general information and guidance only and Dryvit specifically disclaims any liability for the use of this detail. The project design professional determines, in its sole discretion, whether this detail or a functionally equivalent detail is best suited for the project. This detail is subject to change without notice. Contact Dryvit to ensure you have the most recent version.

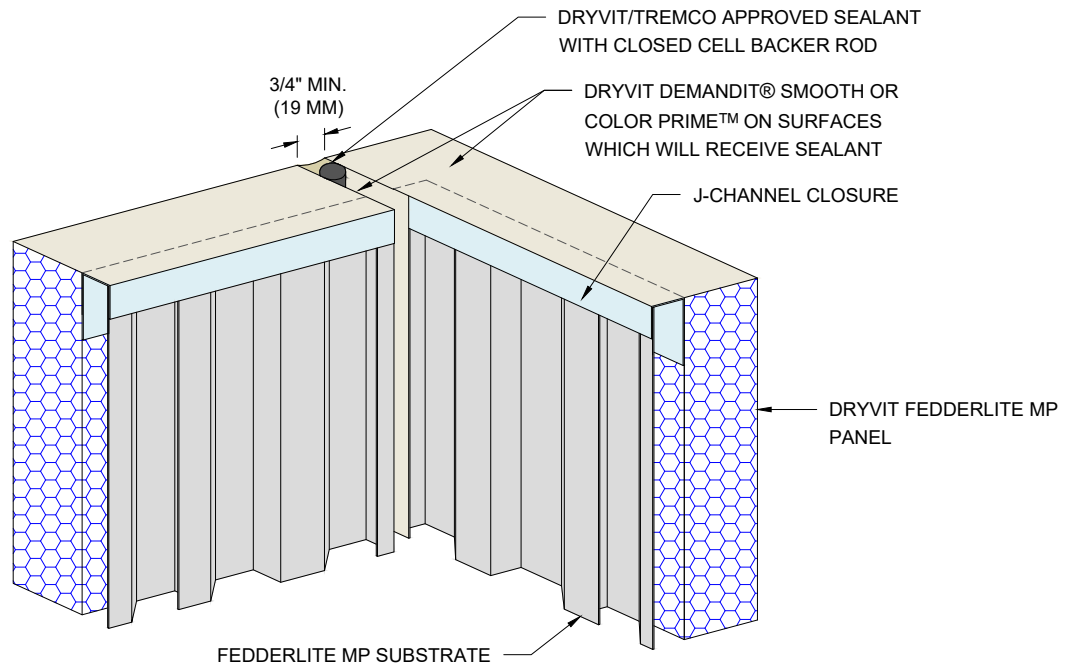
Fedderlite® MP Panel System

 Dryvit Technical Support: 800-556-7752	Detail: Inside Corner				File Name:		 Construction Products Group
	Drawn by: EM	Checked by: RB	Scale: NTS	Date: 2/6/2023	FL MP - 15		
www.tremcocpg.com							

**PRE-ENGINEERED
OUTSIDE CORNER PANEL
SECTION**



**OUTSIDE CORNER
PANEL JOINT
SECTION**





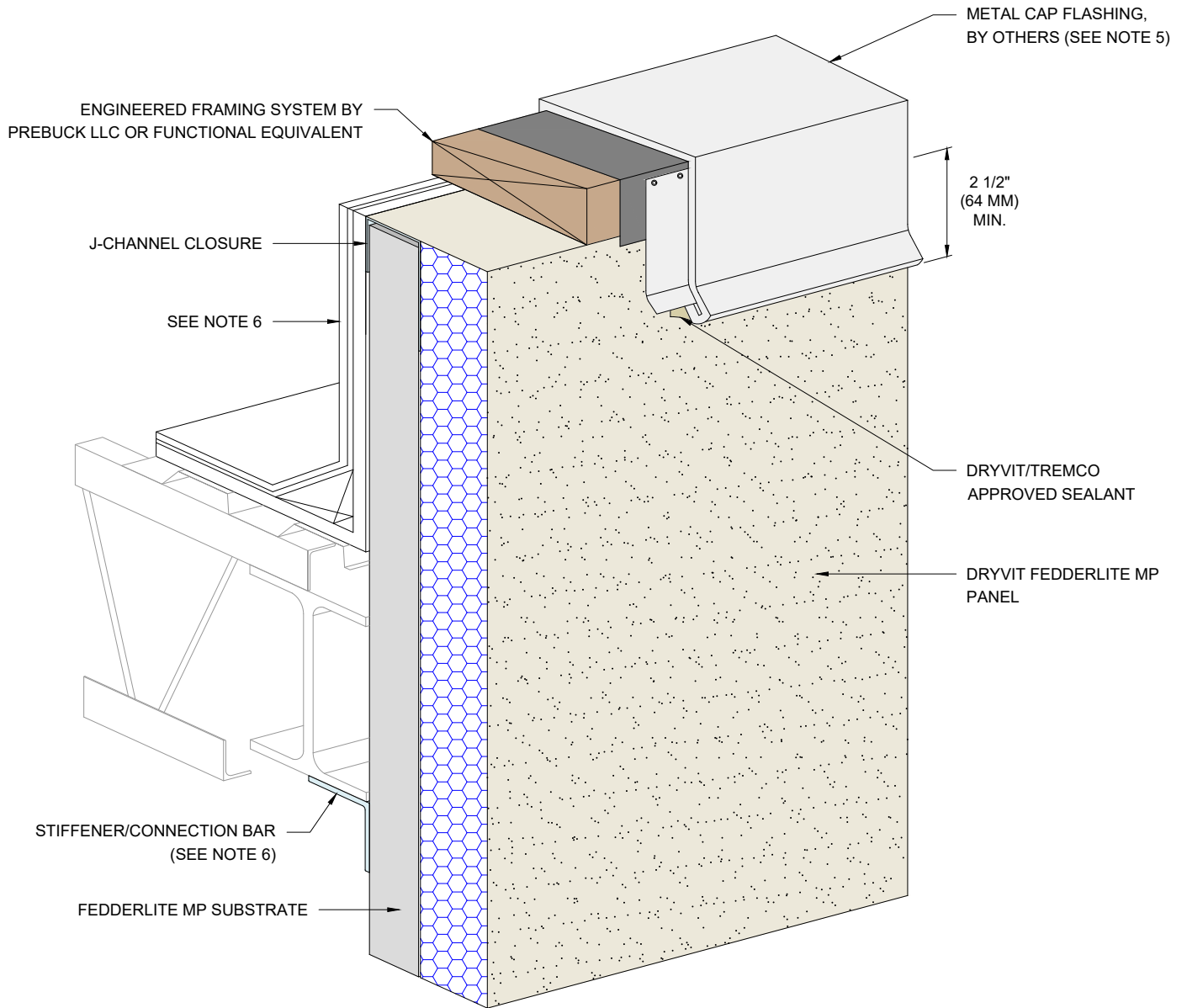
NOTES:

1. DRYVIT RECOMMENDS THAT GROUND FLOOR APPLICATIONS AND ALL FACADES EXPOSED TO ABNORMAL STRESS, HIGH TRAFFIC, OR DELIBERATE IMPACT HAVE THE BASE COAT REINFORCED WITH PANZER® MESH PRIOR TO STANDARD OR STANDARD PLUS MESH. LOCATION OF HIGH IMPACT ZONES SHOULD BE INDICATED ON CONTRACT DRAWINGS.
2. STRUCTURAL ELEMENTS PER DESIGN ENGINEER.
3. FASTENER DESIGN PER APPROVED ENGINEERED SHOP DRAWINGS.
4. ALL FEDDERLITE MP MATERIAL TO RECEIVE DRYVIT LAMINA SHALL BE CLEANED WITH A DEGREASING AGENT.
5. J-CHANNEL AT BOTTOM OF PANEL AND VERTICAL VERTICAL EDGE TERMINATIONS NOT SHOWN. CUTAWAY VIEW ONLY.

The architecture, engineering, and design of the project using the Dryvit products are the responsibility of the project's design professional. All products and systems must comply with local building codes and standards. This detail is for general information and guidance only and Dryvit specifically disclaims any liability for the use of this detail. The project design professional determines, in its sole discretion, whether this detail or a functionally equivalent detail is best suited for the project. This detail is subject to change without notice. Contact Dryvit to ensure you have the most recent version.

Fedderlite® MP Panel System

 Dryvit Technical Support: 800-556-7752	Detail: Outside Corner				File Name:		 Construction Products Group
	Drawn by: EM	Checked by: RB	Scale: NTS	Date: 2/6/2023	FL MP - 16		
www.tremcocpg.com							





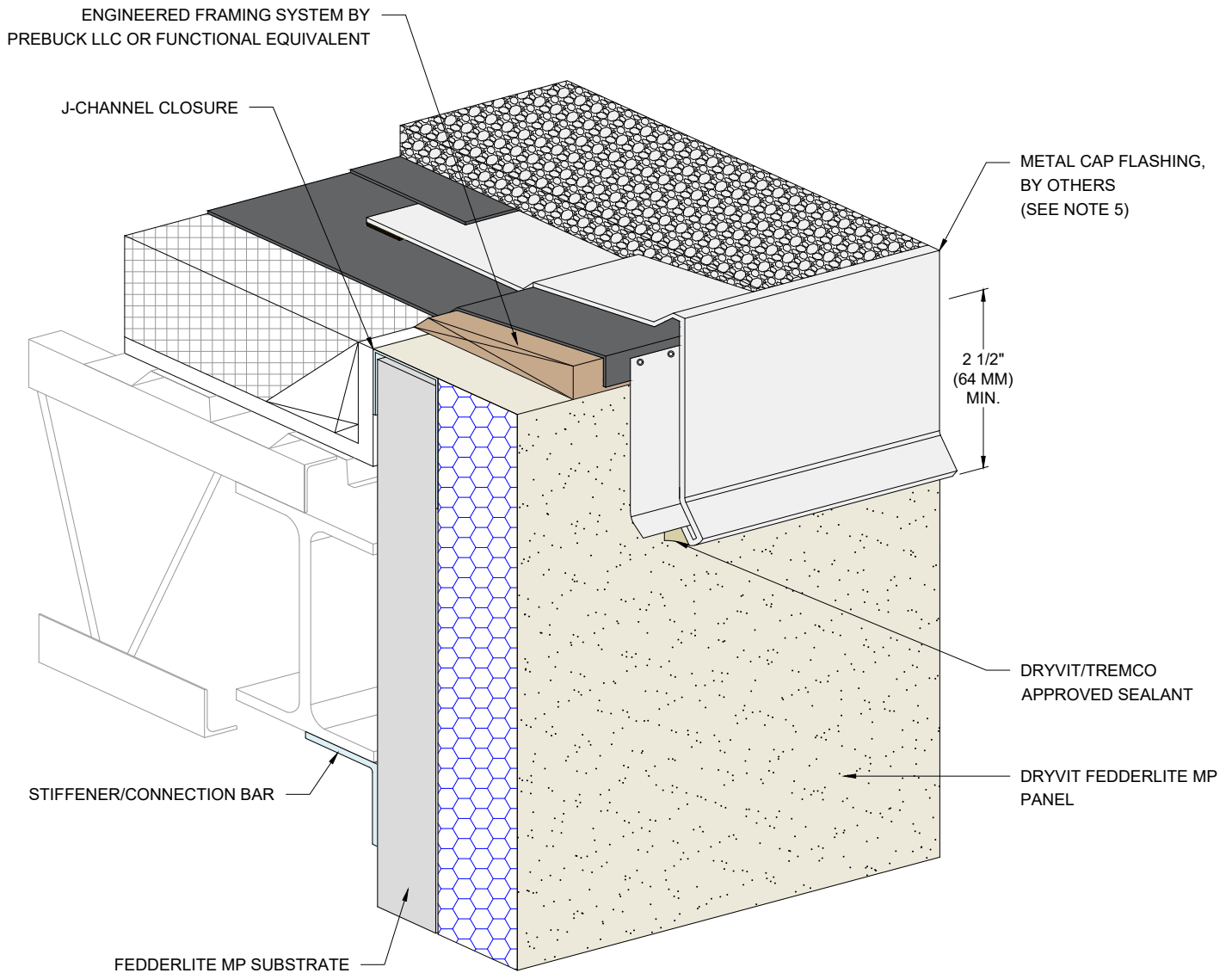
NOTES:

1. DRYVIT RECOMMENDS THAT GROUND FLOOR APPLICATIONS AND ALL FACADES EXPOSED TO ABNORMAL STRESS, HIGH TRAFFIC, OR DELIBERATE IMPACT HAVE THE BASE COAT REINFORCED WITH PANZER® MESH PRIOR TO STANDARD OR STANDARD PLUS MESH. LOCATION OF HIGH IMPACT ZONES SHOULD BE INDICATED ON CONTRACT DRAWINGS.
2. STRUCTURAL ELEMENTS PER DESIGN ENGINEER.
3. FASTENER DESIGN PER APPROVED ENGINEERED SHOP DRAWINGS.
4. ALL FEDDERLITE MP MATERIAL TO RECEIVE DRYVIT LAMINA SHALL BE CLEANED WITH A DEGREASING AGENT.
5. ROOF ASSEMBLY, SHEATHING AND CAP FLASHING ARE INSTALLED IN THE FIELD AND NOT COMPONENTS OF THE PANEL SYSTEM.
6. HEIGHT OF PARAPET AND ATTACHMENT POINTS ARE DETERMINED BY THE STRUCTURAL ENGINEER OF RECORD AND REFLECTED IN ALL PROJECT DOCUMENTS.

The architecture, engineering, and design of the project using the Dryvit products are the responsibility of the project's design professional. All products and systems must comply with local building codes and standards. This detail is for general information and guidance only and Dryvit specifically disclaims any liability for the use of this detail. The project design professional determines, in its sole discretion, whether this detail or a functionally equivalent detail is best suited for the project. This detail is subject to change without notice. Contact Dryvit to ensure you have the most recent version.

Fedderlite® MP Panel System

 Dryvit Technical Support: 800-556-7752	Detail: Termination at Parapet				File Name:		 Construction Products Group
	Drawn by: EM	Checked by: RB	Scale: NTS	Date: 2/6/2023	FL MP - 17		
www.tremcocpg.com							



NOTES:

1. DRYVIT RECOMMENDS THAT GROUND FLOOR APPLICATIONS AND ALL FACADES EXPOSED TO ABNORMAL STRESS, HIGH TRAFFIC, OR DELIBERATE IMPACT HAVE THE BASE COAT REINFORCED WITH PANZER® MESH PRIOR TO STANDARD OR STANDARD PLUS MESH. LOCATION OF HIGH IMPACT ZONES SHOULD BE INDICATED ON CONTRACT DRAWINGS.
2. STRUCTURAL ELEMENTS PER DESIGN ENGINEER.
3. FASTENER DESIGN PER APPROVED ENGINEERED SHOP DRAWINGS.
4. ALL FEDDERLITE MP MATERIAL TO RECEIVE DRYVIT LAMINA SHALL BE CLEANED WITH A DEGREASING AGENT.
5. ROOF ASSEMBLY, SHEATHING AND CAP FLASHING ARE INSTALLED IN THE FIELD AND NOT COMPONENTS OF THE PANEL SYSTEM.

The architecture, engineering, and design of the project using the Dryvit products are the responsibility of the project's design professional. All products and systems must comply with local building codes and standards. This detail is for general information and guidance only and Dryvit specifically disclaims any liability for the use of this detail. The project design professional determines, in its sole discretion, whether this detail or a functionally equivalent detail is best suited for the project. This detail is subject to change without notice. Contact Dryvit to ensure you have the most recent version.

Fedderlite® MP Panel System

Detail: Termination at Gravel Stop Roof

File Name:

Drawn by: EM

Checked by: RB

Scale: NTS

Date: 2/6/2023

FL MP - 18

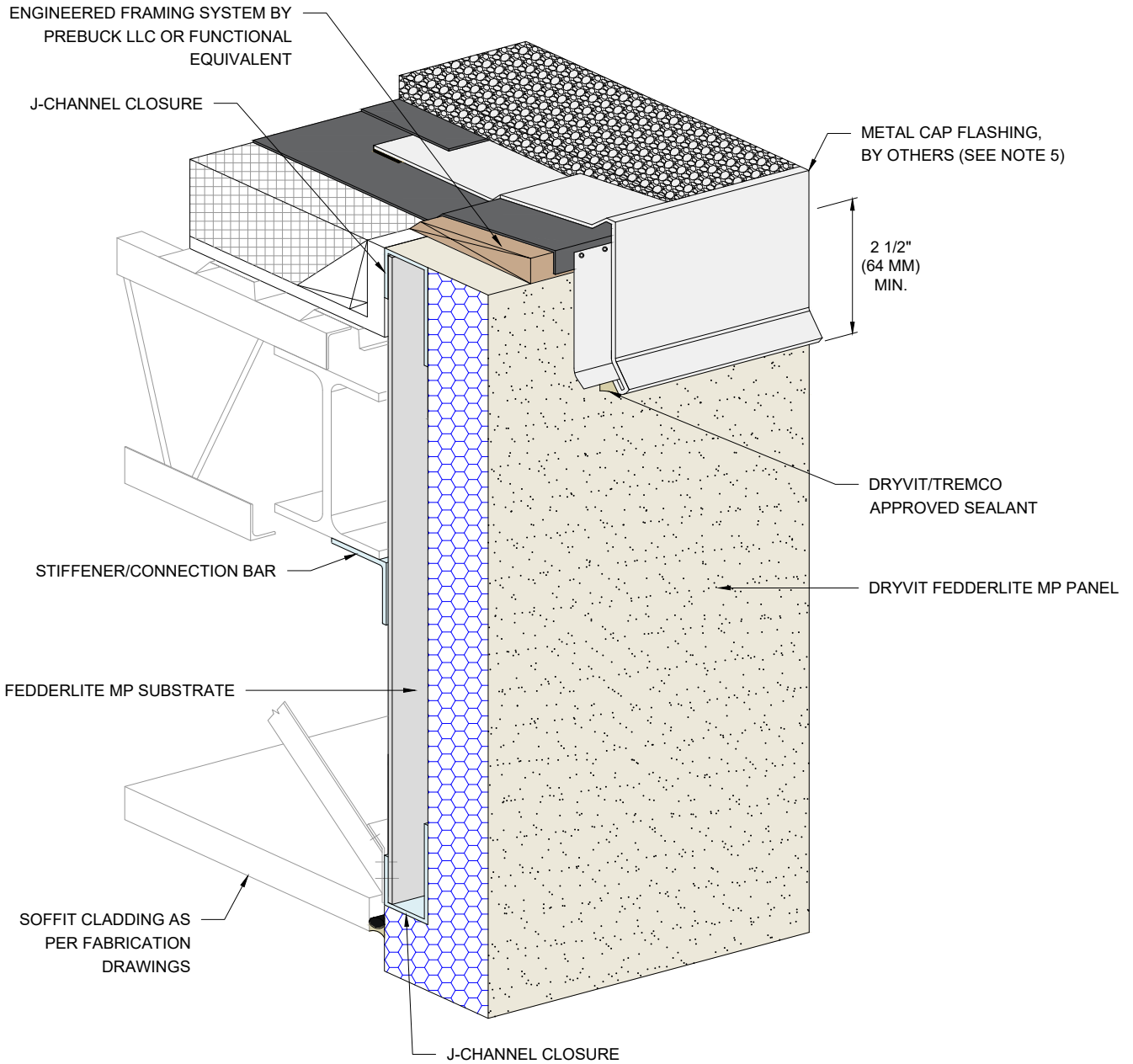


Dryvit Technical Support: 800-556-7752



Construction Products Group

www.tremcocpg.com





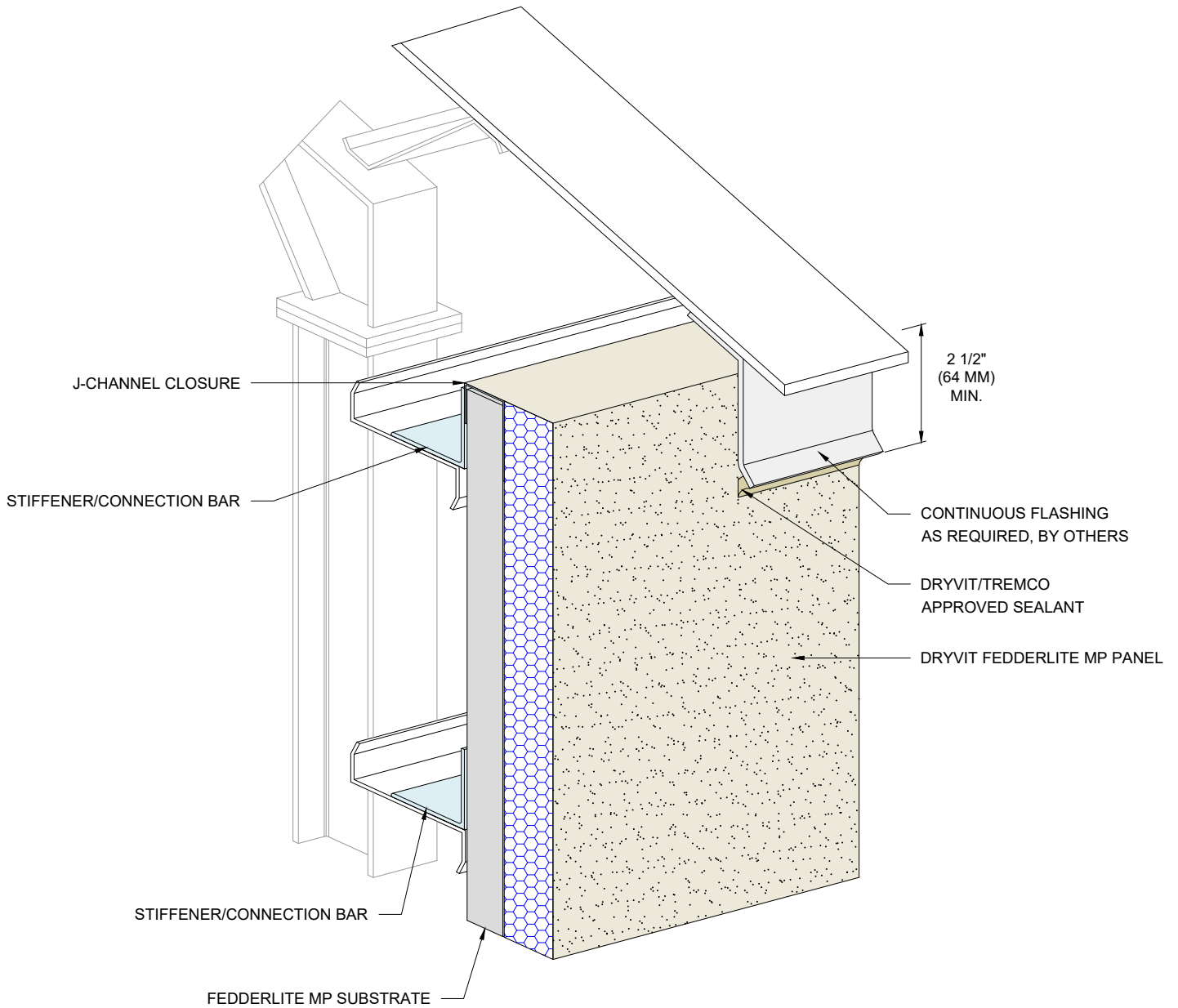
NOTES:

1. DRYVIT RECOMMENDS THAT GROUND FLOOR APPLICATIONS AND ALL FACADES EXPOSED TO ABNORMAL STRESS, HIGH TRAFFIC, OR DELIBERATE IMPACT HAVE THE BASE COAT REINFORCED WITH PANZER® MESH PRIOR TO STANDARD OR STANDARD PLUS MESH. LOCATION OF HIGH IMPACT ZONES SHOULD BE INDICATED ON CONTRACT DRAWINGS.
2. STRUCTURAL ELEMENTS PER DESIGN ENGINEER.
3. FASTENER DESIGN PER APPROVED ENGINEERED SHOP DRAWINGS.
4. ALL FEDDERLITE MP MATERIAL TO RECEIVE DRYVIT LAMINA SHALL BE CLEANED WITH A DEGREASING AGENT.
5. ROOF ASSEMBLY, SHEATHING AND CAP FLASHING ARE INSTALLED IN THE FIELD AND NOT COMPONENTS OF THE PANEL SYSTEM.

The architecture, engineering, and design of the project using the Dryvit products are the responsibility of the project's design professional. All products and systems must comply with local building codes and standards. This detail is for general information and guidance only and Dryvit specifically disclaims any liability for the use of this detail. The project design professional determines, in its sole discretion, whether this detail or a functionally equivalent detail is best suited for the project. This detail is subject to change without notice. Contact Dryvit to ensure you have the most recent version.

Fedderlite® MP Panel System

 Dryvit Technical Support: 800-556-7752	Detail: Fascia Panel				File Name:		 Construction Products Group
	Drawn by: EM	Checked by: RB	Scale: NTS	Date: 2/6/2023	FL MP - 19		
www.tremcocpg.com							





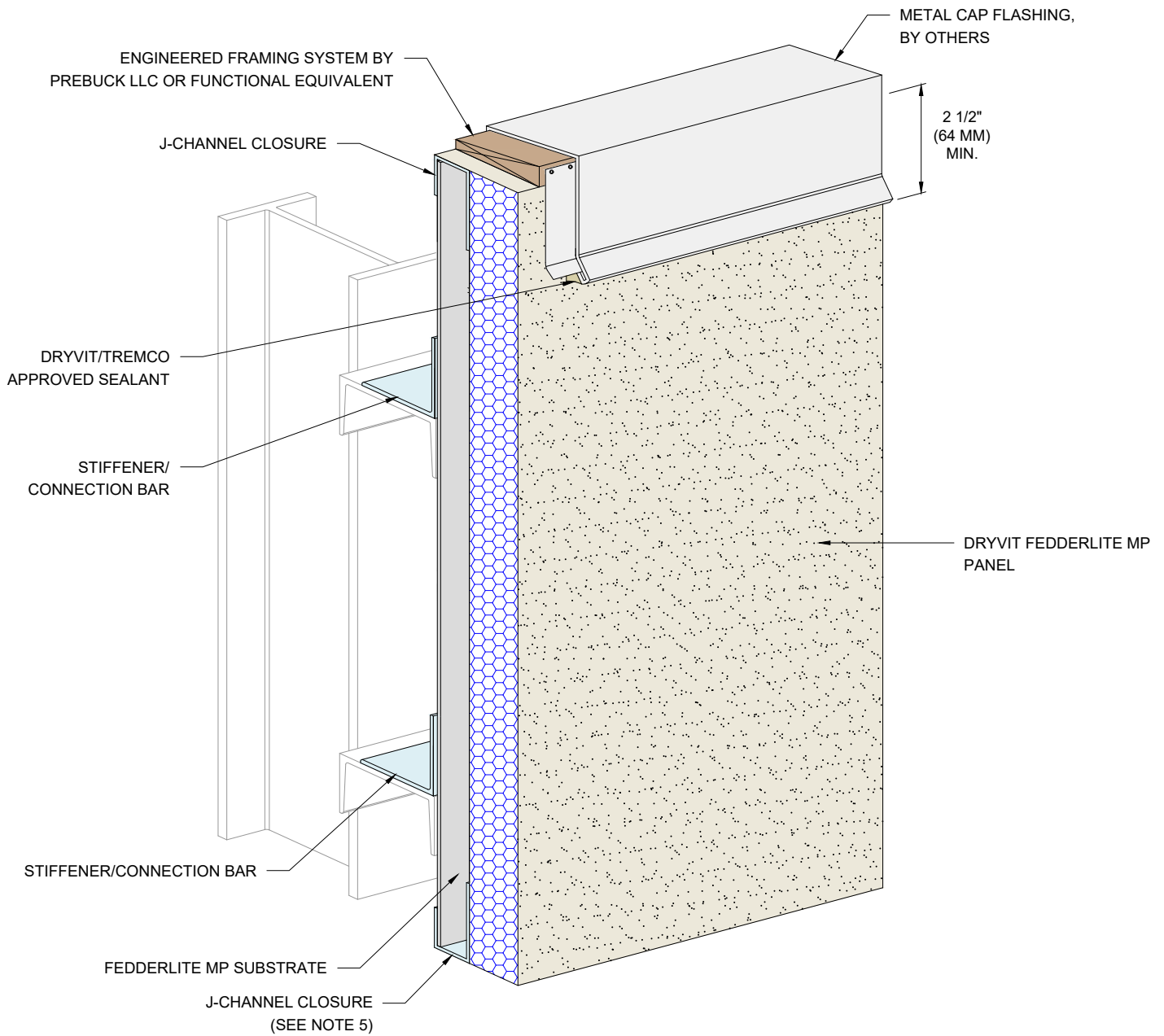
NOTES:

1. DRYVIT RECOMMENDS THAT GROUND FLOOR APPLICATIONS AND ALL FACADES EXPOSED TO ABNORMAL STRESS, HIGH TRAFFIC, OR DELIBERATE IMPACT HAVE THE BASE COAT REINFORCED WITH PANZER® MESH PRIOR TO STANDARD OR STANDARD PLUS MESH. LOCATION OF HIGH IMPACT ZONES SHOULD BE INDICATED ON CONTRACT DRAWINGS.
2. STRUCTURAL ELEMENTS PER DESIGN ENGINEER.
3. FASTENER DESIGN PER APPROVED ENGINEERED SHOP DRAWINGS.
4. ALL FEDDERLITE MP MATERIAL TO RECEIVE DRYVIT LAMINA SHALL BE CLEANED WITH A DEGREASING AGENT.

The architecture, engineering, and design of the project using the Dryvit products are the responsibility of the project's design professional. All products and systems must comply with local building codes and standards. This detail is for general information and guidance only and Dryvit specifically disclaims any liability for the use of this detail. The project design professional determines, in its sole discretion, whether this detail or a functionally equivalent detail is best suited for the project. This detail is subject to change without notice. Contact Dryvit to ensure you have the most recent version.

Fedderlite® MP Panel System

 Dryvit Technical Support: 800-556-7752	Detail: Wall/Roof Intersection				File Name:		 Construction Products Group
	Drawn by: EM	Checked by: RB	Scale: NTS	Date: 2/6/2023	FL MP - 20		
www.tremcocpg.com							





NOTES:

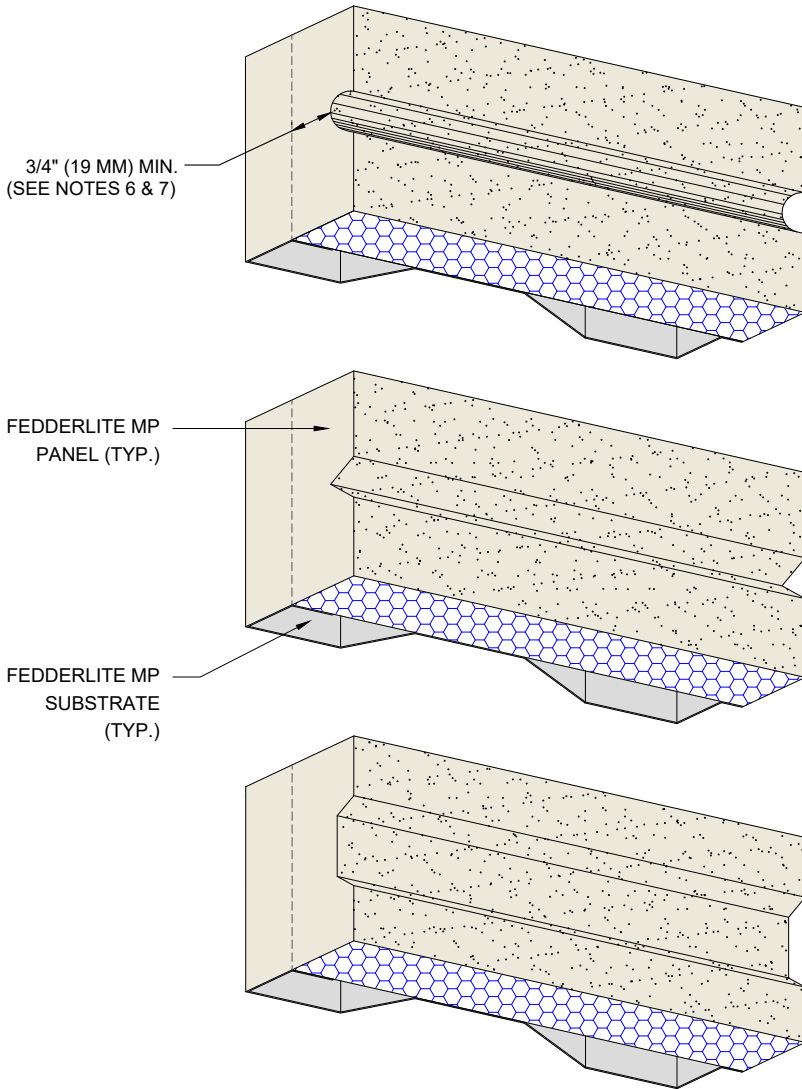
1. DRYVIT RECOMMENDS THAT GROUND FLOOR APPLICATIONS AND ALL FACADES EXPOSED TO ABNORMAL STRESS, HIGH TRAFFIC, OR DELIBERATE IMPACT HAVE THE BASE COAT REINFORCED WITH PANZER® MESH PRIOR TO STANDARD OR STANDARD PLUS MESH. LOCATION OF HIGH IMPACT ZONES SHOULD BE INDICATED ON CONTRACT DRAWINGS.
2. STRUCTURAL ELEMENTS PER DESIGN ENGINEER.
3. FASTENER DESIGN PER APPROVED ENGINEERED SHOP DRAWINGS.
4. ALL FEDDERLITE MP MATERIAL TO RECEIVE DRYVIT LAMINA SHALL BE CLEANED WITH A DEGREASING AGENT.
5. DRILL BOTTOM J-CHANNEL TO ALLOW FOR DRAINAGE, PAINT HOLES WITH RUST INHIBITING PAINT.

The architecture, engineering, and design of the project using the Dryvit products are the responsibility of the project's design professional. All products and systems must comply with local building codes and standards. This detail is for general information and guidance only and Dryvit specifically disclaims any liability for the use of this detail. The project design professional determines, in its sole discretion, whether this detail or a functionally equivalent detail is best suited for the project. This detail is subject to change without notice. Contact Dryvit to ensure you have the most recent version.

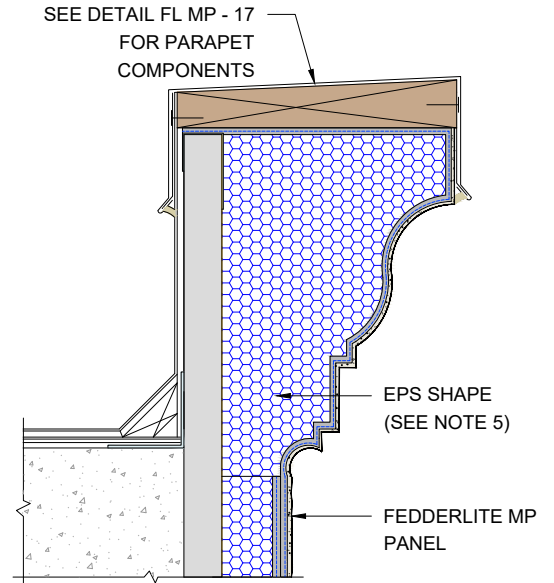
Fedderlite® MP Panel System

 Dryvit Technical Support: 800-556-7752	Detail: Screen Wall				File Name:		 Construction Products Group
	Drawn by: EM	Checked by: RB	Scale: NTS	Date: 2/6/2023	FL MP - 21		
www.tremcocpg.com							

**AESTHETIC REVEALS
SECTION**



**EPS SHAPE
SECTION**



NOTES:

1. DRYVIT RECOMMENDS THAT GROUND FLOOR APPLICATIONS AND ALL FACADES EXPOSED TO ABNORMAL STRESS, HIGH TRAFFIC, OR DELIBERATE IMPACT HAVE THE BASE COAT REINFORCED WITH PANZER® MESH PRIOR TO STANDARD OR STANDARD PLUS MESH. LOCATION OF HIGH IMPACT ZONES SHOULD BE INDICATED ON CONTRACT DRAWINGS.
2. STRUCTURAL ELEMENTS PER DESIGN ENGINEER.
3. FASTENER DESIGN PER APPROVED ENGINEERED SHOP DRAWINGS.
4. ALL FEDDERLITE MP MATERIAL TO RECEIVE DRYVIT LAMINA SHALL BE CLEANED WITH A DEGREASING AGENT.
5. MAXIMUM THICKNESS OF EPS BUILT OUT SHAPES SHALL NOT EXCEED 13" (330 MM) AT ANY POINT MEASURED FROM THE SUBSTRATE.
6. CARE MUST BE GIVEN SO THAT FASTENERS DO NOT ALIGN WITH AESTHETIC REVEALS.
7. SLOPE BOTTOM EDGE OF REVEAL FOR POSITIVE DRAINAGE.

The architecture, engineering, and design of the project using the Dryvit products are the responsibility of the project's design professional. All products and systems must comply with local building codes and standards. This detail is for general information and guidance only and Dryvit specifically disclaims any liability for the use of this detail. The project design professional determines, in its sole discretion, whether this detail or a functionally equivalent detail is best suited for the project. This detail is subject to change without notice. Contact Dryvit to ensure you have the most recent version.

Fedderlite® MP Panel System

Detail: Aesthetic Reveals and EPS Shapes

File Name:

Drawn by: EM

Checked by: RB

Scale: NTS

Date: 2/6/2023

FL MP - 22

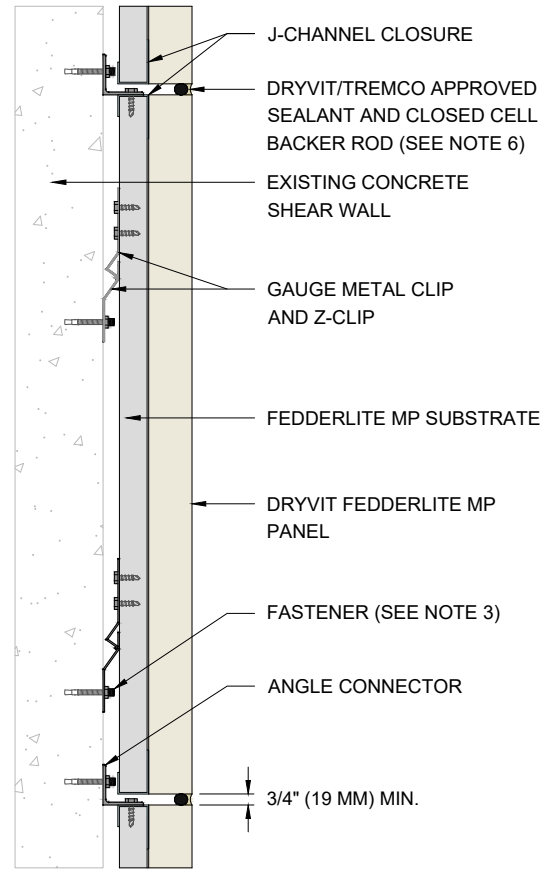
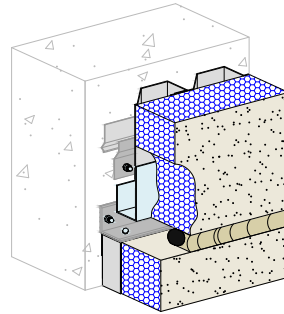
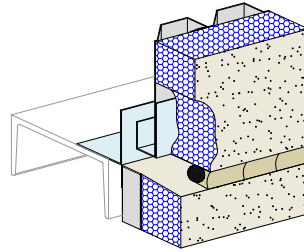
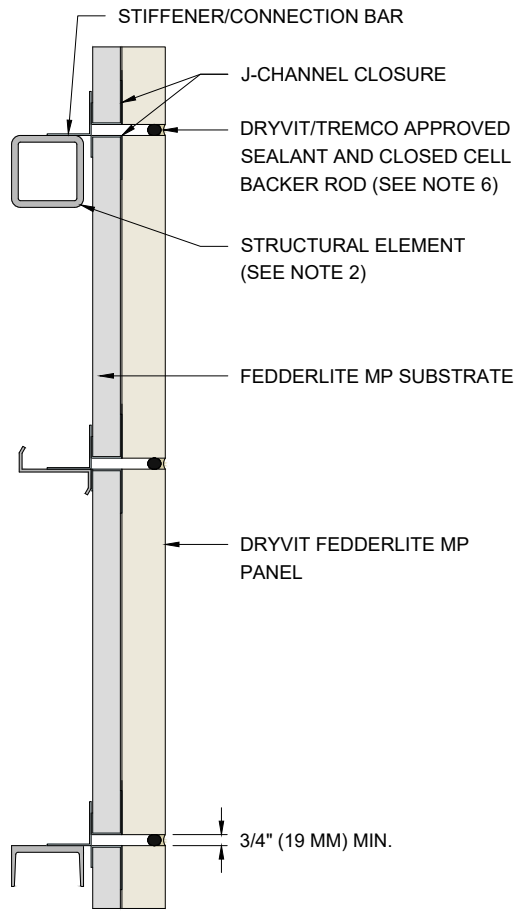


Dryvit Technical Support: 800-556-7752

www.tremcocpg.com



Construction Products Group



FEDDERLITE MP Substrate - Wind Load Table (see notes a, b, c, d)

Span (ft)	5	5.5	6	6.5	7	7.5	8	8.5	9	9.5	10	10.5
Design Wind Pressure (psf)	110	90	75	65	55	50	40	35	30	25	25	20

- a. Material: 22 GA - ASTM A653 SS Grade 33
- b. All values are based on L/240 maximum deflection. Above values are for FEDDERLITE MP Substrate only.
- c. See detail FL MP-06 for fastening pattern.
- d. Refer to Dryvit Publication DS135 for wind load values of mechanically fastened Exterior Insulation and Finish System.

NOTES:

1. DRYVIT RECOMMENDS THAT GROUND FLOOR APPLICATIONS AND ALL FACADES EXPOSED TO ABNORMAL STRESS, HIGH TRAFFIC, OR DELIBERATE IMPACT HAVE THE BASE COAT REINFORCED WITH PANZER® MESH PRIOR TO STANDARD OR STANDARD PLUS MESH. LOCATION OF HIGH IMPACT ZONES SHOULD BE INDICATED ON CONTRACT DRAWINGS.
2. STRUCTURAL ELEMENTS PER DESIGN ENGINEER.
3. FASTENER DESIGN PER APPROVED ENGINEERED SHOP DRAWINGS.
4. ALL FEDDERLITE MP MATERIAL TO RECEIVE DRYVIT LAMINA SHALL BE CLEANED WITH A DEGREASING AGENT.
5. J-CHANNEL AT TOP AND BOTTOM OF PANEL NOT SHOWN. SECTION VIEW ONLY.
6. HONOR ALL BUILDING EXPANSION JOINTS AND SIZE ACCORDINGLY AS PER SHOP DRAWINGS.
7. PANEL WEIGHT: 4.5 LBS/SQ.FT. INCLUDING THE INSULATION AND FINISH SYSTEM.

The architecture, engineering, and design of the project using the Dryvit products are the responsibility of the project's design professional. All products and systems must comply with local building codes and standards. This detail is for general information and guidance only and Dryvit specifically disclaims any liability for the use of this detail. The project design professional determines, in its sole discretion, whether this detail or a functionally equivalent detail is best suited for the project. This detail is subject to change without notice. Contact Dryvit to ensure you have the most recent version.

Fedderlite® MP Panel System

Detail: Design Values and Attachment Options

File Name:

Drawn by: EM

Checked by: RB

Scale: NTS

Date: 2/6/2023

FL MP - 23



Dryvit Technical Support: 800-556-7752



Construction Products Group

www.tremcocpg.com