

STUCCOAT™ ONE-COAT SYSTEM

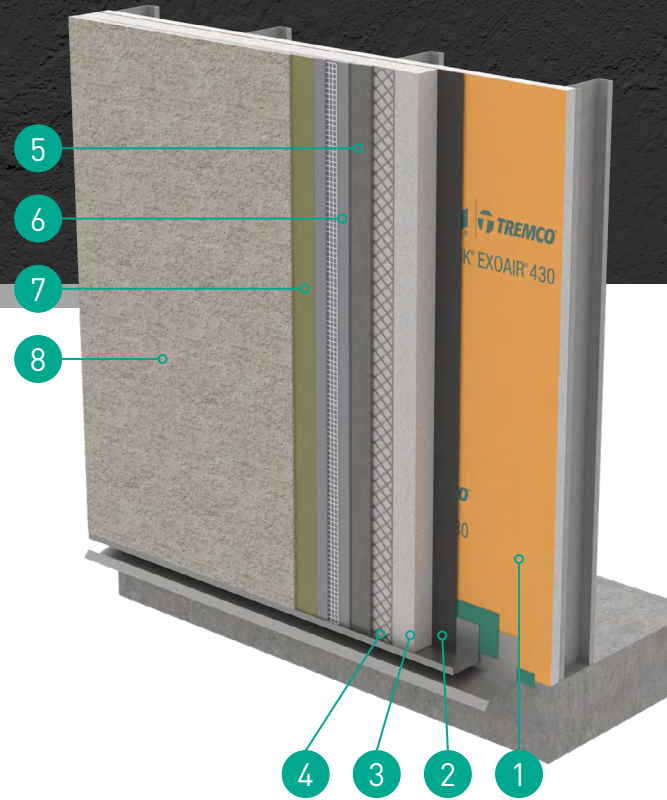
System Overview

Dryvit's StucCoat One-Coat System is a complete stucco assembly for residential and commercial buildings. StucCoat One-Coat is a code-compliant assembly that may be installed over various approved sheathing surfaces. This assembly provides improved energy efficiency and higher R-values when combined with Dryvit Continuous Insulation (CI).

StucCoat One-Coat is impact resistant, and may be installed as a conventional system coating (scratch & brown) complying with ASTM C926.

Features & Benefits

- A complete stucco assembly for commercial or residential applications
- Improved energy-efficiency and higher R-values when paired with Dryvit's industry-leading CI
- Impact-resistant
- Can be installed as a conventional scratch & brown system complying with ASTM C926
- May be installed over various approved sheathing surfaces
- Industry-leading warranty options available
- As part of Tremco Construction Products Group, Dryvit's StucCoat One-Coat is compatible with many Dryvit and Tremco air/water-resistive barriers, all Dryvit finish options, Tremco sealants, and more.



System Components

1	Air/Water-Resistive Barrier over Approved Sheathing Substrate
2	Paper Backing
3	Foam Insulation <i>(Optional)</i>
4	Metal Plaster Base, as Specified
5	StucCoat One-Coat Sanded Base Coat
6	Crack Isolation Membrane
7	Acrylic Primer <i>(As Required or Specified)</i>
8	Acrylic Textured Finish

