

**A Fire-Rated, Stucco System Assembly for Residential and Commercial Buildings  
with Insulated and Crack-Resistant (CRS) Optional Components**

**StucCoat One Coat System  
Installation Details**

# Table of Contents

## Detail

STUCCOAT ONE COAT SYSTEM	SCOC 1
BOARD JOINT AND FASTENER TREATMENT	SCOC 2
OPENING PREPARATION- AQUAFLASH® SYSTEM OR EXOAIR 230 WITH MESH	SCOC 3
OPENING PREPARATION - DYMONIC 100 OR BACKSTOP FLASH AND FILL	SCOC 4
OPENING PREPARATION - BACKSTOP NTX OR EXOAIR 230	SCOC 5
OPENING PREPARATION - EXOAIR 110AT	SCOC 6
OPENING FLASHING INTEGRATION - AQUAFLASH SYSTEM OR EXOAIR 230	SCOC 7
OPENING FLASHING INTEGRATION - DYMONIC 100 OR BACKSTOP FLASH AND FILL	SCOC 8
OPENING FLASHING INTEGRATION - EXOAIR 110AT	SCOC 9
FLANGED WINDOW HEAD	SCOC 10
FLANGED WINDOW SILL	SCOC 11
FLANGED WINDOW SILL	SCOC 12
OUTSIDE CORNER	SCOC 13
INSIDE CORNER	SCOC 14
TERMINATION AT PARAPET - CAP FLASHING	SCOC 15
PENETRATION	SCOC 16
HORIZONTAL TERMINATION AT STONE VENEER	SCOC 17
HORIZONTAL FLASHING AND EXPANSION JOINT	SCOC 18
TERMINATION AT WOOD FRAMED DECK	SCOC 19
TERMINATION AT ROOF/WALL INTERSECTION	SCOC 20

### NOTE:

DRYVIT, TREMCO AND USG MAKE NO REPRESENTATION REGARDING CONFORMITY OF ITS SUGGESTIONS TO MODEL BUILDING CODES, ENGINEERING CRITERIA, SPECIFIC APPLICATIONS, OR PROJECT LOCATIONS. ALL COMPONENTS INDICATED IN ILLUSTRATIONS, AS WELL AS OTHERS THAT MAY BE REQUIRED FOR THE INTEGRITY OF THE SYSTEM SHALL BE DESIGNED, DETAILED, AND ENGINEERED BY REPRESENTATIVES OF THE ARCHITECT, OWNER, OR CONTRACTOR TO BE IN CONFORMANCE WITH MODEL CODES, ARCHITECTURAL, AND ENGINEERING REQUIREMENTS PERTAINING TO SPECIFIC BUILDING PROJECTS.

DRYVIT, TREMCO AND USG MAKE NO WARRANTY, EXPRESSED OR IMPLIED, AS TO THE ARCHITECTURAL DESIGN, ENGINEERING, OR WORKMANSHIP OF PROJECTS UTILIZING DRYVIT SYSTEMS OR PRODUCTS.

THE LIABILITIES OF DRYVIT, TREMCO AND USG SHALL BE AS STATED IN THE DRYVIT STANDARD WARRANTY. CONTACT DRYVIT, TREMCO AND USG FOR A FULL AND COMPLETE COPY OF THE WARRANTY.

*The architecture, engineering, and design of the project using the Dryvit and Tremco products are the responsibility of the project's design professional. All products and systems must comply with local building codes and standards. This detail is for general information and guidance only and Dryvit and Tremco specifically disclaims any liability for the use of this detail. The project design professional determines, in its sole discretion, whether this detail or a functionally equivalent detail is best suited for the project. This detail is subject to change without notice. Contact Dryvit and Tremco to ensure you have the most recent version.*

## StucCoat One Coat® System



Dryvit Technical Support: 800-556-7752

Detail: Table of Contents

Drawn by: KAB

Checked by:

Scale: NTS

Date: 4/2023

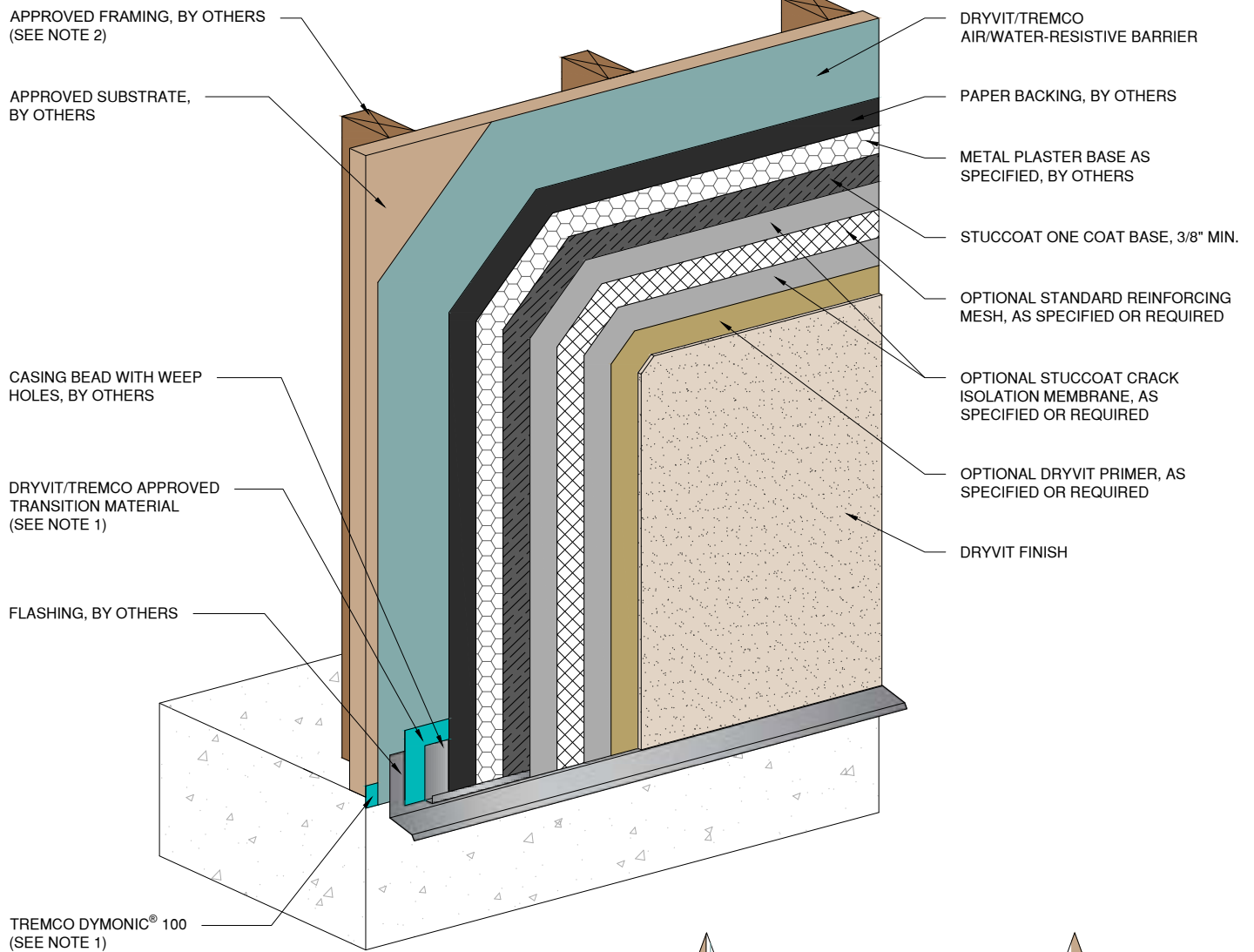
File Name:

TOC

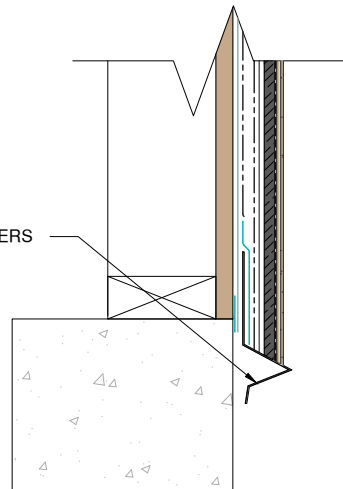
[www.tremcocpg.com](http://www.tremcocpg.com)



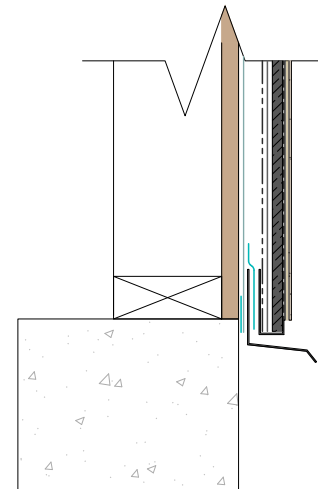
Construction Products Group



WEEP SCREED, BY OTHERS



WEEP SCREED OPTION SECTION DETAIL



SECTION DETAIL

**NOTE:**

1. REFER TO PRODUCT DATA SHEETS FOR SPECIFIC APPLICATION METHODS.

2. WALL ASSEMBLY SHALL PROVIDE FOR A MAXIMUM DESIGN DEFLECTION OF L/360.

*The architecture, engineering, and design of the project using the Dryvit and Tremco products are the responsibility of the project's design professional. All products and systems must comply with local building codes and standards. This detail is for general information and guidance only and Dryvit and Tremco specifically disclaims any liability for the use of this detail. The project design professional determines, in its sole discretion, whether this detail or a functionally equivalent detail is best suited for the project. This detail is subject to change without notice. Contact Dryvit and Tremco to ensure you have the most recent version.*

**StucCoat One Coat® System**



Dryvit Technical Support: 800-556-7752

Detail: StucCoat One Coat System

Drawn by: KAB

Checked by: BD/CB

Scale: NTS

Date: 4/2023

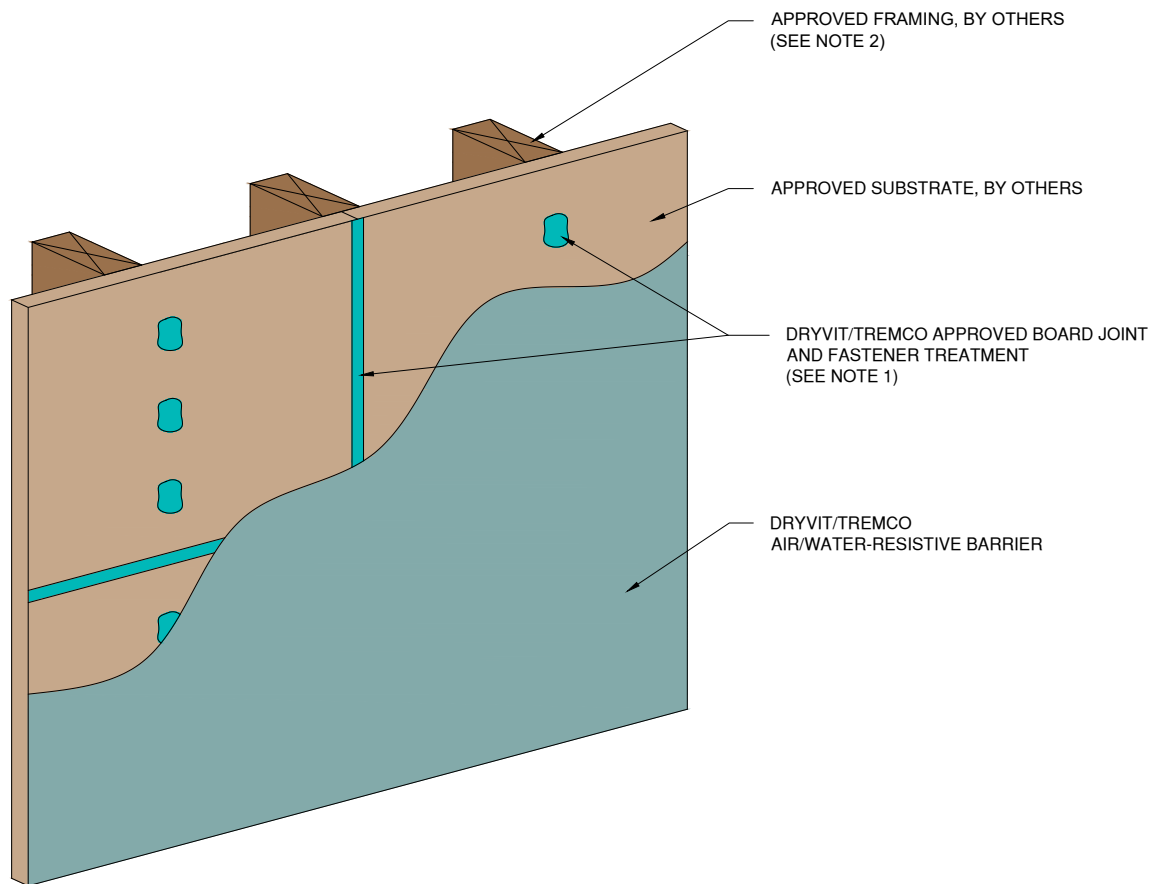
File Name:

SCOC 1



Construction Products Group

[www.tremcocpg.com](http://www.tremcocpg.com)



NOTE:  
 1. APPLY DYMONIC 100 ENSURING MINIMUM OVERLAP OF 3/4" (19 MM) ONTO EACH PANEL AT 40 MILS.  
 2. WALL ASSEMBLY SHALL PROVIDE FOR A MAXIMUM DESIGN DEFLECTION OF L/360.

*The architecture, engineering, and design of the project using the Dryvit and Tremco products are the responsibility of the project's design professional. All products and systems must comply with local building codes and standards. This detail is for general information and guidance only and Dryvit and Tremco specifically disclaims any liability for the use of this detail. The project design professional determines, in its sole discretion, whether this detail or a functionally equivalent detail is best suited for the project. This detail is subject to change without notice. Contact Dryvit and Tremco to ensure you have the most recent version.*

### StucCoat One Coat® System



Detail: Board Joint and Fastener Treatment

Drawn by: KAB

Checked by: BD/CB

Scale: NTS

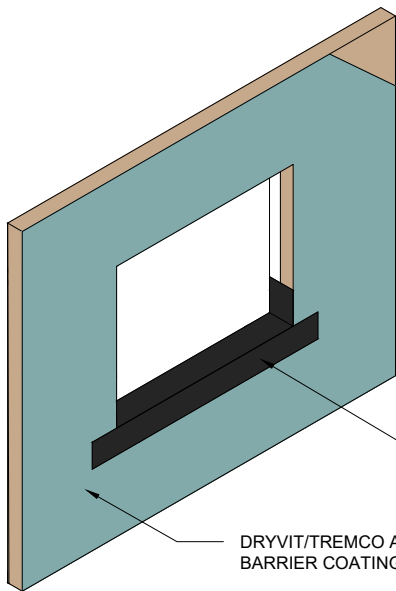
Date: 4/2023

File Name:

SCOC 2



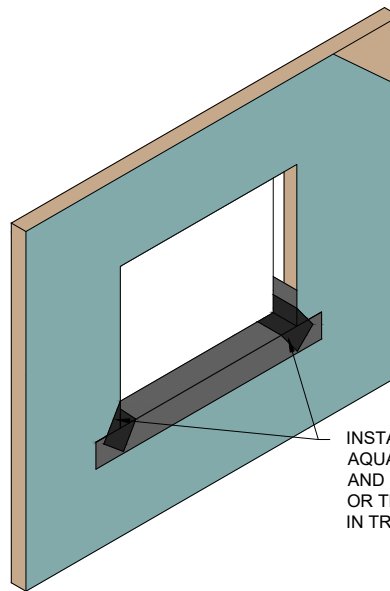
[www.tremcocpg.com](http://www.tremcocpg.com)



**STEP #1**

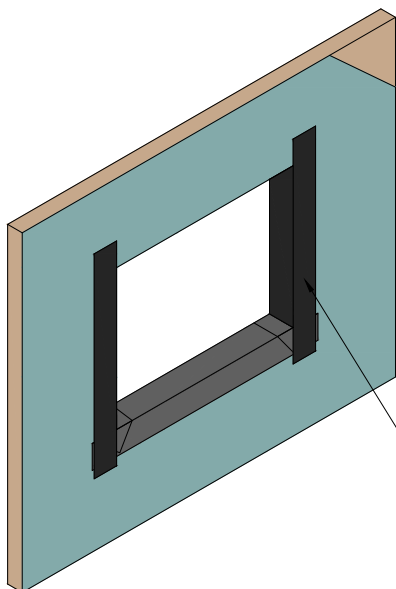
APPLY DRYVIT AQUAFLASH® SYSTEM OR TREMCO EXOAIR® 230 WITH TREMCO® 2011 MESH (SEE NOTE 1)

DRYVIT/TREMCO AIR/WATER-RESISTIVE BARRIER COATING



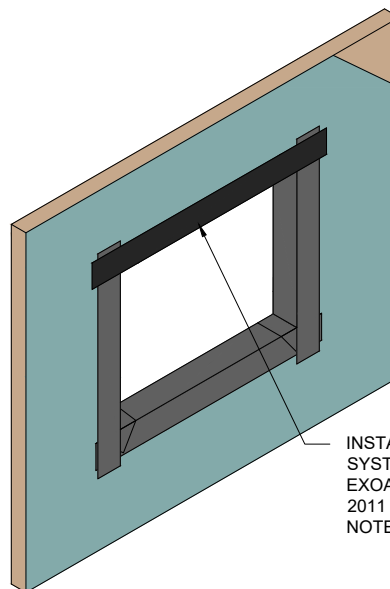
**STEP #2**

INSTALL DIAGONAL STRIP OF DRYVIT AQUAFLASH MESH AT CORNERS AND EMBED IN AQUAFLASH LIQUID OR TREMCO 2011 MESH EMBEDDED IN TREMCO EXOAIR 230 (SEE NOTE 1)



**STEP #3**

INSTALL DRYVIT AQUAFLASH SYSTEM OR TREMCO EXOAIR 230 WITH TREMCO 2011 MESH AT JAMBS (SEE NOTES 1 AND 3)



**STEP #4**

INSTALL DRYVIT AQUAFLASH SYSTEM OR TREMCO EXOAIR 230 WITH TREMCO 2011 MESH AT HEADS (SEE NOTES 1, 3)

**NOTE:**

1. DRYVIT AQUAFLASH AND TREMCO EXOAIR 230 WITH MESH SHALL EXTEND TO INTERIOR FACE OF OPENING.

2. REFER TO HEAD, SILL AND JAMB DETAILS FOR FLASHING INTEGRATION.

3. INSTALL WINDOW UNIT AND ASSOCIATED FLASHINGS PER MANUFACTURER'S RECOMMENDATIONS, CODE REQUIREMENTS AND PROJECT DOCUMENTS.

4. REFER TO PRODUCT DATA SHEETS FOR SPECIFIC APPLICATION METHODS.

*The architecture, engineering, and design of the project using the Dryvit and Tremco products are the responsibility of the project's design professional. All products and systems must comply with local building codes and standards. This detail is for general information and guidance only and Dryvit and Tremco specifically disclaims any liability for the use of this detail. The project design professional determines, in its sole discretion, whether this detail or a functionally equivalent detail is best suited for the project. This detail is subject to change without notice. Contact Dryvit and Tremco to ensure you have the most recent version.*

**StucCoat One Coat® System**



Dryvit Technical Support: 800-556-7752

Detail: Opening Preparation - Dryvit AquaFlash® System or Tremco ExoAir® 230 with Mesh Option

Drawn by: KAB

Checked by: BD/CB

Scale: NTS

Date: 4/2023

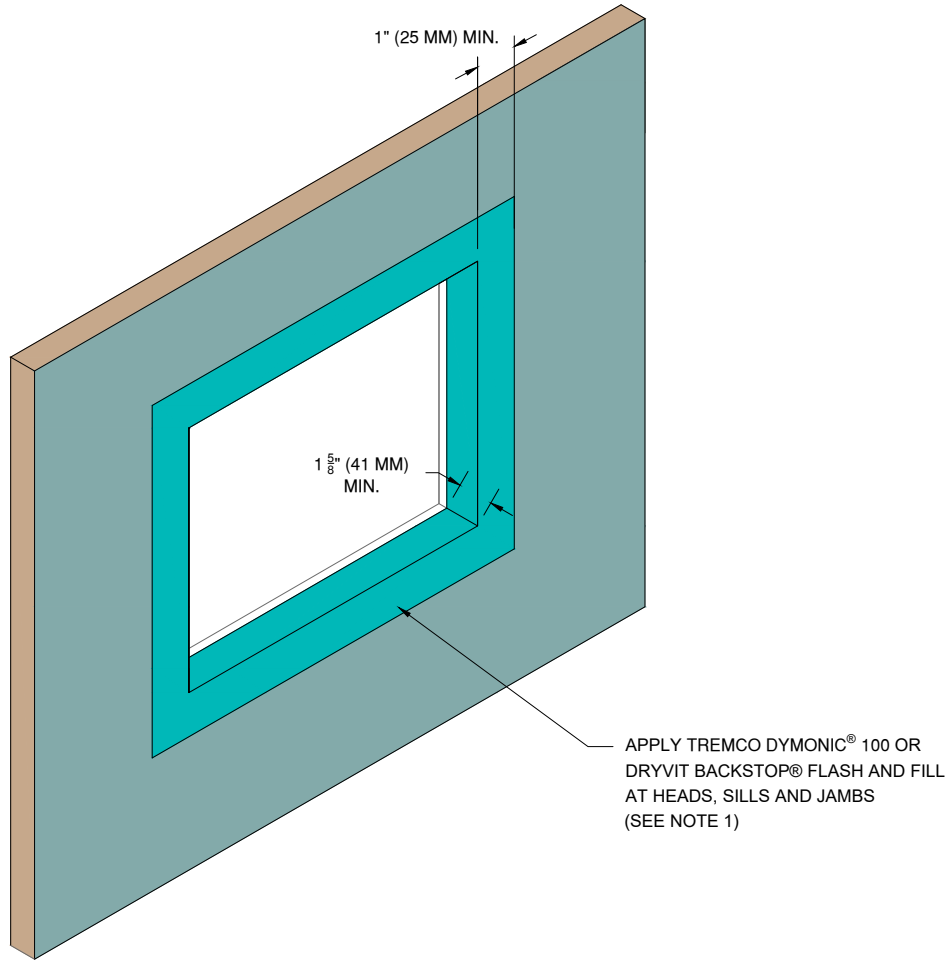
File Name:

SCOC 3



Construction Products Group

www.tremcocpg.com



**NOTE:**

1. REFER TO HEAD, SILL AND JAMB DETAILS FOR FLASHING INTEGRATION.

2. REFER TO PRODUCT DATA SHEETS FOR SPECIFIC APPLICATION METHODS.

3. THE ONLY WRB TO BE USED WITH BACKSTOP® FLASH AND FILL IS BACKSTOP® NTX™.

*The architecture, engineering, and design of the project using the Dryvit and Tremco products are the responsibility of the project's design professional. All products and systems must comply with local building codes and standards. This detail is for general information and guidance only and Dryvit and Tremco specifically disclaims any liability for the use of this detail. The project design professional determines, in its sole discretion, whether this detail or a functionally equivalent detail is best suited for the project. This detail is subject to change without notice. Contact Dryvit and Tremco to ensure you have the most recent version.*

**StucCoat One Coat® System**



Dryvit Technical Support: 800-556-7752

Detail: Opening Preparation - Tremco Dymonic® 100 or Backstop® Flash and Fill Option

Drawn by: KAB

Checked by: BD/CB

Scale: NTS

Date: 4/2023

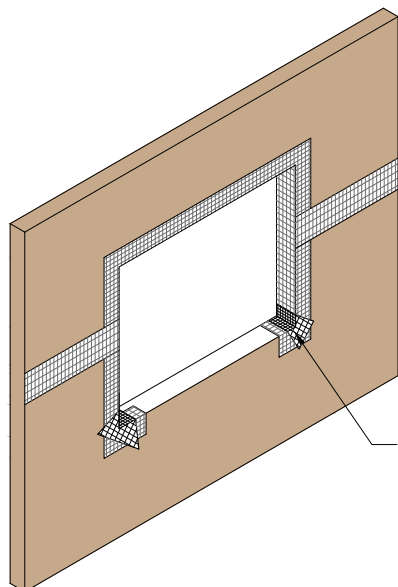
File Name:

SCOC 4



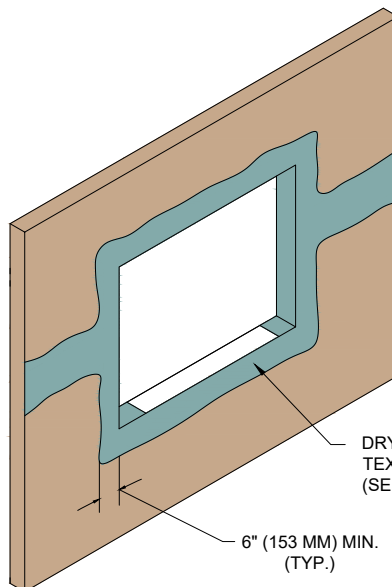
Construction Products Group

[www.tremcocpg.com](http://www.tremcocpg.com)



APPLY DRYVIT GRID TAPE™ OR TREMCO EXOAIR® 230 WITH TREMCO® 2011 MESH (SEE NOTES 1, 2, 5)

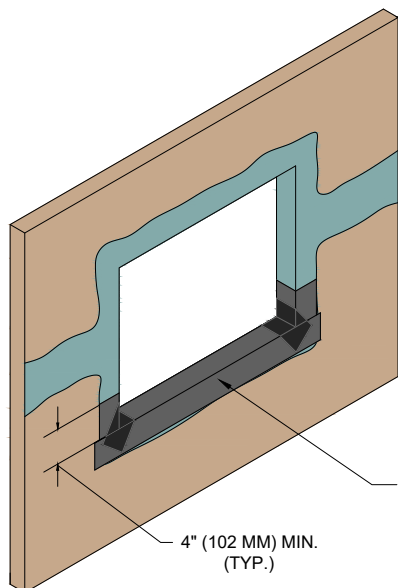
## STEP #1



DRYVIT BACKSTOP® NTX™ - TEXTURE OR TREMCO EXOAIR 230 (SEE NOTE 2)

6" (153 MM) MIN. (TYP.)

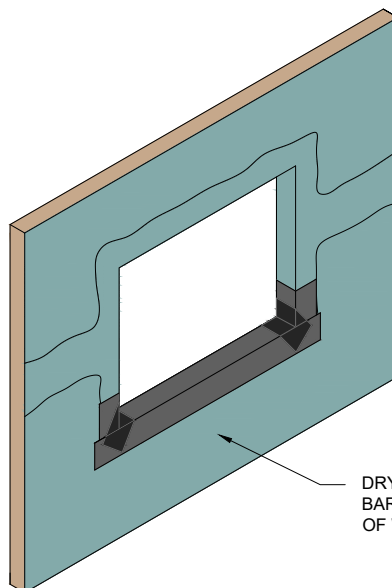
## STEP #2



APPLY DRYVIT AQUAFLASH® SYSTEM OR TREMCO EXOAIR 230 WITH TREMCO 2011 MESH (SEE NOTES 2, 4, 5)

4" (102 MM) MIN. (TYP.)

## STEP #3



DRYVIT/TREMCO AIR/WATER-RESISTIVE BARRIER COATING APPLIED TO FACE OF WALL (SEE NOTE 4)

## STEP #4

### NOTE:

1. APPLY DRYVIT GRID TAPE OR TREMCO EXOAIR 230 WITH TREMCO 2011 MESH ON HEAD, JAMB, AND CORNERS OF OPENINGS AND SHEATHING JOINTS.

2. TROWEL APPLY DRYVIT BACKSTOP® NTX™ - TEXTURE OVER THE DRYVIT GRID TAPE OR APPLY TREMCO EXOAIR 230 WITH TREMCO 2011 MESH ALL THE WAY TO INSIDE FACE OF OPENING. ALL VOIDS MUST BE FILLED; MULTIPLE PASSES MAY BE REQUIRED. AS AN OPTION, DRYVIT GRID TAPE AND DRYVIT BACKSTOP® NTX™ - TEXTURE MAY ALSO BE APPLIED AT THE SILL PRIOR TO DRYVIT AQUAFLASH SYSTEM APPLICATION

3. INSTALL WINDOW UNIT AND ASSOCIATED FLASHINGS PER MANUFACTURER'S RECOMMENDATIONS, CODE REQUIREMENTS AND PROJECT DOCUMENTS.

4. REFER TO HEAD, SILL, AND JAMB DETAILS FOR FLASHING INTEGRATION.

5. REFER TO PRODUCT DATA SHEETS FOR SPECIFIC APPLICATION METHODS.

*The architecture, engineering, and design of the project using the Dryvit and Tremco products are the responsibility of the project's design professional. All products and systems must comply with local building codes and standards. This detail is for general information and guidance only and Dryvit and Tremco specifically disclaims any liability for the use of this detail. The project design professional determines, in its sole discretion, whether this detail or a functionally equivalent detail is best suited for the project. This detail is subject to change without notice. Contact Dryvit and Tremco to ensure you have the most recent version.*

### StucCoat One Coat® System



Dryvit Technical Support: 800-556-7752

Detail: Opening Preparation - Backstop® NTX or Tremco ExoAir® 230 Option

Drawn by: KAB

Checked by: BD/CB

Scale: NTS

Date: 4/2023

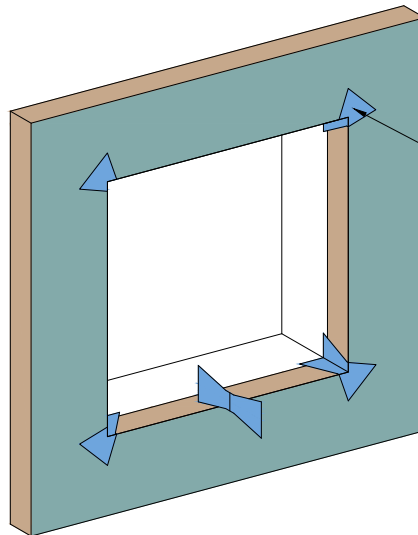
File Name:

SCOC 5



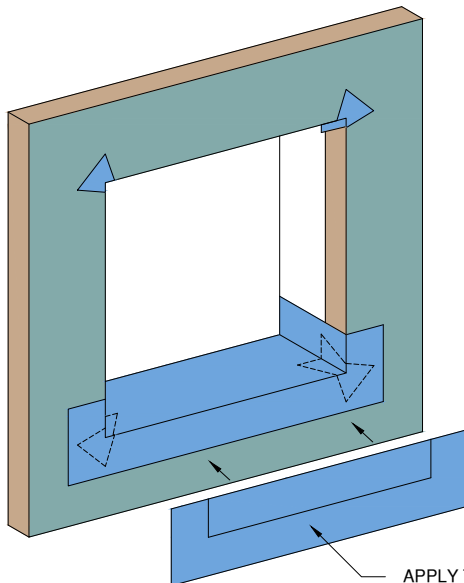
Construction Products Group

www.tremcocpg.com



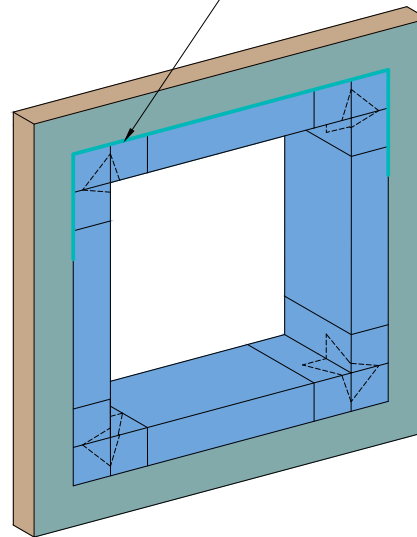
TREMCO EXOAIR® 110AT BOW TIES  
INSTALLED AT ROUGH OPENING CORNERS

## STEP #1



APPLY TREMCO EXOAIR® 110AT 3" MIN INTO  
ROUGH OPENING AND EXTERIOR FACE OF  
WALL AT SILLS, JAMBS AND HEADS

## STEP #2



APPLY TREMCO DYMONIC® 100 ACROSS  
EDGE OF TREMCO® EXOAIR 110AT AT  
WINDOW HEAD AND DOWN JAMBS 6"

## STEP #3

NOTE:  
2. REFER TO HEAD, SILL AND JAMB DETAILS FOR  
FLASHING INTEGRATION.

*The architecture, engineering, and design of the project using the Dryvit and Tremco products are the responsibility of the project's design professional. All products and systems must comply with local building codes and standards. This detail is for general information and guidance only and Dryvit and Tremco specifically disclaims any liability for the use of this detail. The project design professional determines, in its sole discretion, whether this detail or a functionally equivalent detail is best suited for the project. This detail is subject to change without notice. Contact Dryvit and Tremco to ensure you have the most recent version.*

### StucCoat One Coat® System



Dryvit Technical Support: 800-556-7752

Detail: Opening Preparation - Tremco ExoAir® 110AT Option

Drawn by: KAB

Checked by: BD/CB

Scale: NTS

Date: 4/2023

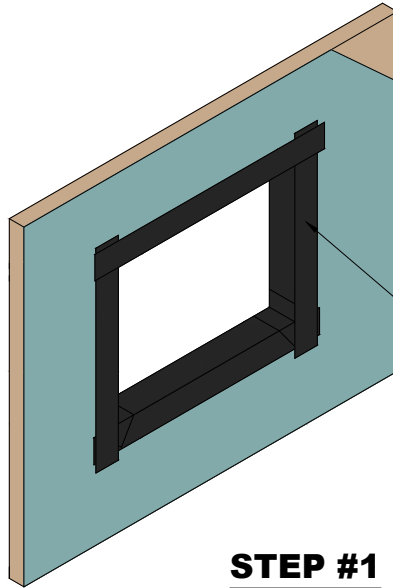
File Name:

SCOC 6

[www.tremcocpg.com](http://www.tremcocpg.com)

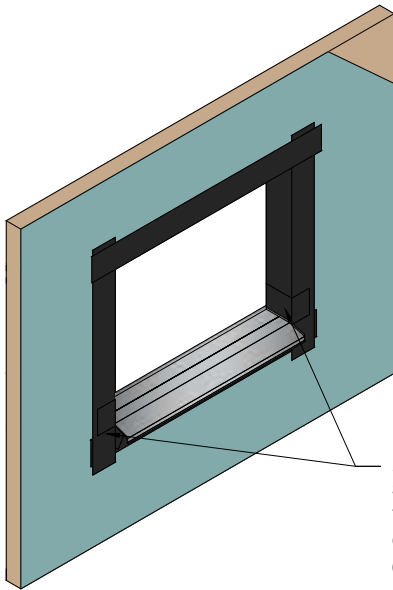






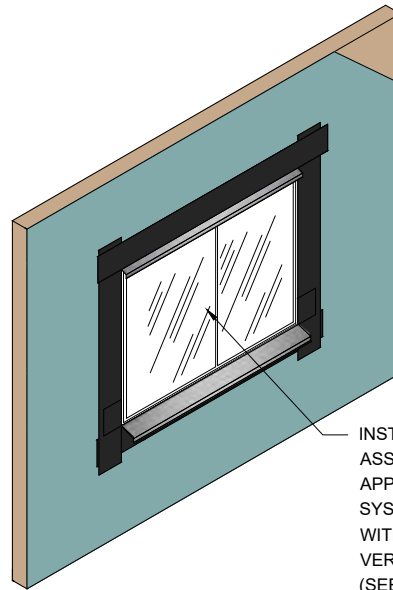
REFER TO OPENING PREPARATION DETAILS  
FOR PREPARATION OF OPENING PRIOR TO  
FLASHING INSTALLATION

## STEP #1



APPLY DRYVIT AQUAFLASH®  
SYSTEM OR TREMCO EXOAIR® 230 WITH  
TREMCO® 2011 MESH SPLICES LAPPING  
OVER LIP OF SILL PAN FLASHING.  
(SEE NOTE 1)

## STEP #2



INSTALL WINDOW UNIT AND  
ASSOCIATED FLASHINGS AND  
APPLY DRYVIT AQUAFLASH  
SYSTEM OR TREMCO EXOAIR 230  
WITH TREMCO 2011 MESH OVER  
VERTICAL LEG OF FLASHING  
(SEE NOTE 1)

## STEP #3

NOTE:  
1. REFER TO PRODUCT DATA SHEETS FOR  
SPECIFIC APPLICATION METHODS.

*The architecture, engineering, and design of the project using the Dryvit and Tremco products are the responsibility of the project's design professional. All products and systems must comply with local building codes and standards. This detail is for general information and guidance only and Dryvit and Tremco specifically disclaims any liability for the use of this detail. The project design professional determines, in its sole discretion, whether this detail or a functionally equivalent detail is best suited for the project. This detail is subject to change without notice. Contact Dryvit and Tremco to ensure you have the most recent version.*

### StucCoat One Coat® System



Dryvit Technical Support: 800-556-7752

Detail: Opening Flashing Integration - Aquaflash® System or  
Tremco ExoAir® 230 Option

Drawn by: KAB

Checked by: BD/CB

Scale: NTS

Date: 4/2023

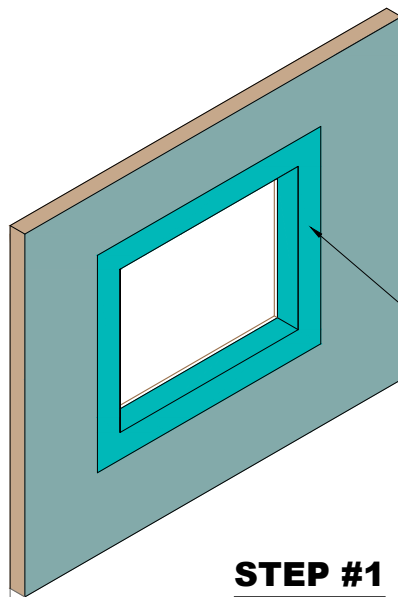
File Name:

SCOC 7



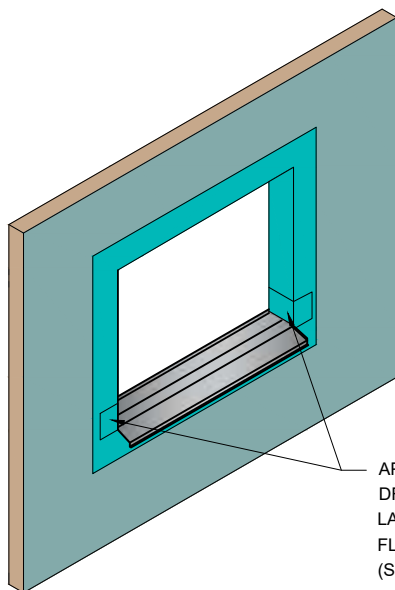
Construction Products Group

www.tremcocpg.com



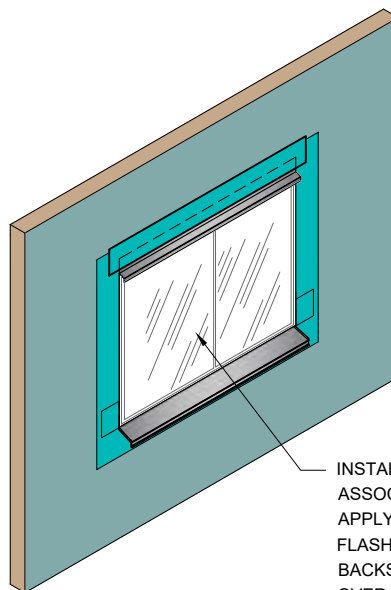
REFER TO OPENING PREPARATION DETAILS  
FOR PREPARATION OF OPENING PRIOR TO  
FLASHING INSTALLATION

## STEP #1



APPLY TREMCO DYMONIC® 100 OR OR  
DRYVIT BACKSTOP® FLASH AND FILL  
LAPPING OVER LIP OF SILL PAN  
FLASHING.  
(SEE NOTES 1,2)

## STEP #2



INSTALL WINDOW UNIT AND  
ASSOCIATED FLASHINGS AND  
APPLY TREMCO DYMONIC® 100  
FLASHING OR DRYVIT  
BACKSTOP® FLASH AND FILL  
OVER VERTICAL LEG OF FLASHING  
(SEE NOTES 1, 2,)

## STEP #3

### NOTE:

1. REFER TO PRODUCT DATA SHEETS FOR  
SPECIFIC APPLICATION METHODS.

2. THE ONLY WRB TO BE USED WITH BACKSTOP®  
FLASH AND FILL IS BACKSTOP® NTX™.

*The architecture, engineering, and design of the project using the Dryvit and Tremco products are the responsibility of the project's design professional. All products and systems must comply with local building codes and standards. This detail is for general information and guidance only and Dryvit and Tremco specifically disclaims any liability for the use of this detail. The project design professional determines, in its sole discretion, whether this detail or a functionally equivalent detail is best suited for the project. This detail is subject to change without notice. Contact Dryvit and Tremco to ensure you have the most recent version.*

### StucCoat One Coat® System



Detail: Opening Flashing Integration - Tremco Dymonic® 100 or  
Backstop® Flash and Fill Option

File Name:

Drawn by: KAB

Checked by: BD/CB

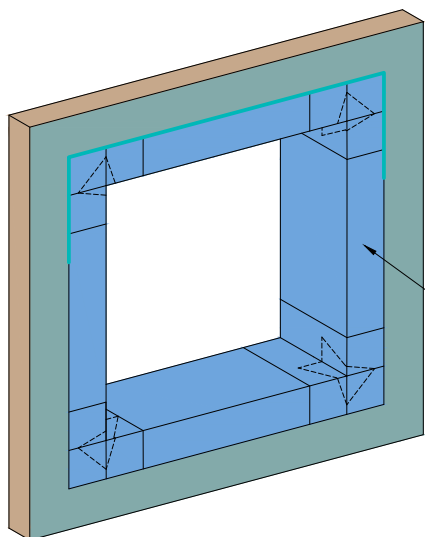
Scale: NTS

Date: 4/2023

SCOC 8

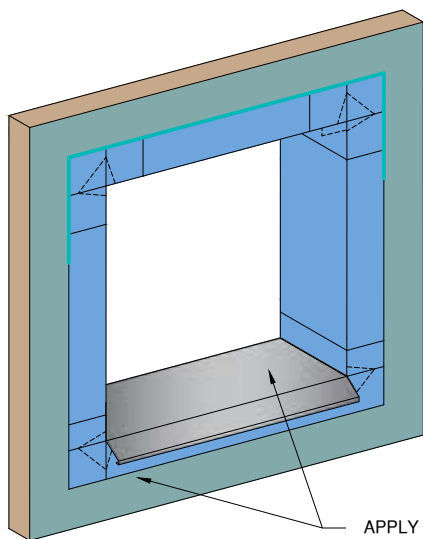


www.tremcocpg.com



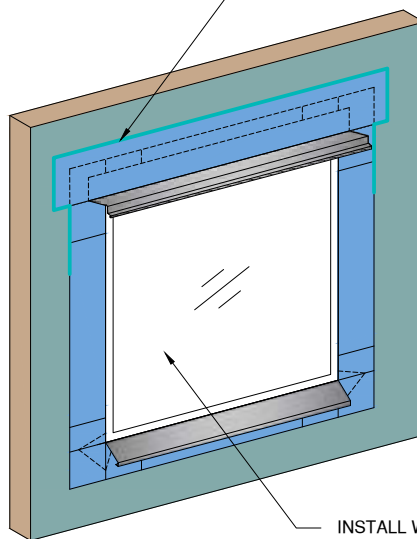
REFER TO OPENING PREPARATION  
DETAILS FOR DETAILING OF OPENING  
PRIOR TO FLASHING INSTALLATION

## STEP #1



APPLY TREMCO EXOAIR® 110AT  
LAPPING OVER LIP OF SILL PAN FLASHING  
(SEE NOTE 1)

## STEP #2



APPLY TREMCO DYMONIC® 100 ACROSS  
EDGE OF TREMCO® EXOAIR 110AT AT  
WINDOW HEAD AND DOWN JAMBS 6"

INSTALL WINDOW UNIT AND  
ASSOCIATED FLASHINGS AND  
APPLY TREMCO EXOAIR® 110AT  
OVER VERTICAL LEG OF  
FLASHING (SEE NOTE 1)

## STEP #3

### NOTE:

1. INSTALL WINDOW UNIT AND ASSOCIATED FLASHINGS  
PER MANUFACTURER'S RECOMMENDATIONS, CODE  
REQUIREMENTS AND PROJECT DOCUMENTS.

*The architecture, engineering, and design of the project using the Dryvit and Tremco products are the responsibility of the project's design professional. All products and systems must comply with local building codes and standards. This detail is for general information and guidance only and Dryvit and Tremco specifically disclaims any liability for the use of this detail. The project design professional determines, in its sole discretion, whether this detail or a functionally equivalent detail is best suited for the project. This detail is subject to change without notice. Contact Dryvit and Tremco to ensure you have the most recent version.*

### StucCoat One Coat® System



Dryvit Technical Support: 800-556-7752

Detail: Opening Flashing Integration - Tremco ExoAir® 110AT Option

Drawn by: KAB

Checked by: BD/CB

Scale: NTS

Date: 4/2023

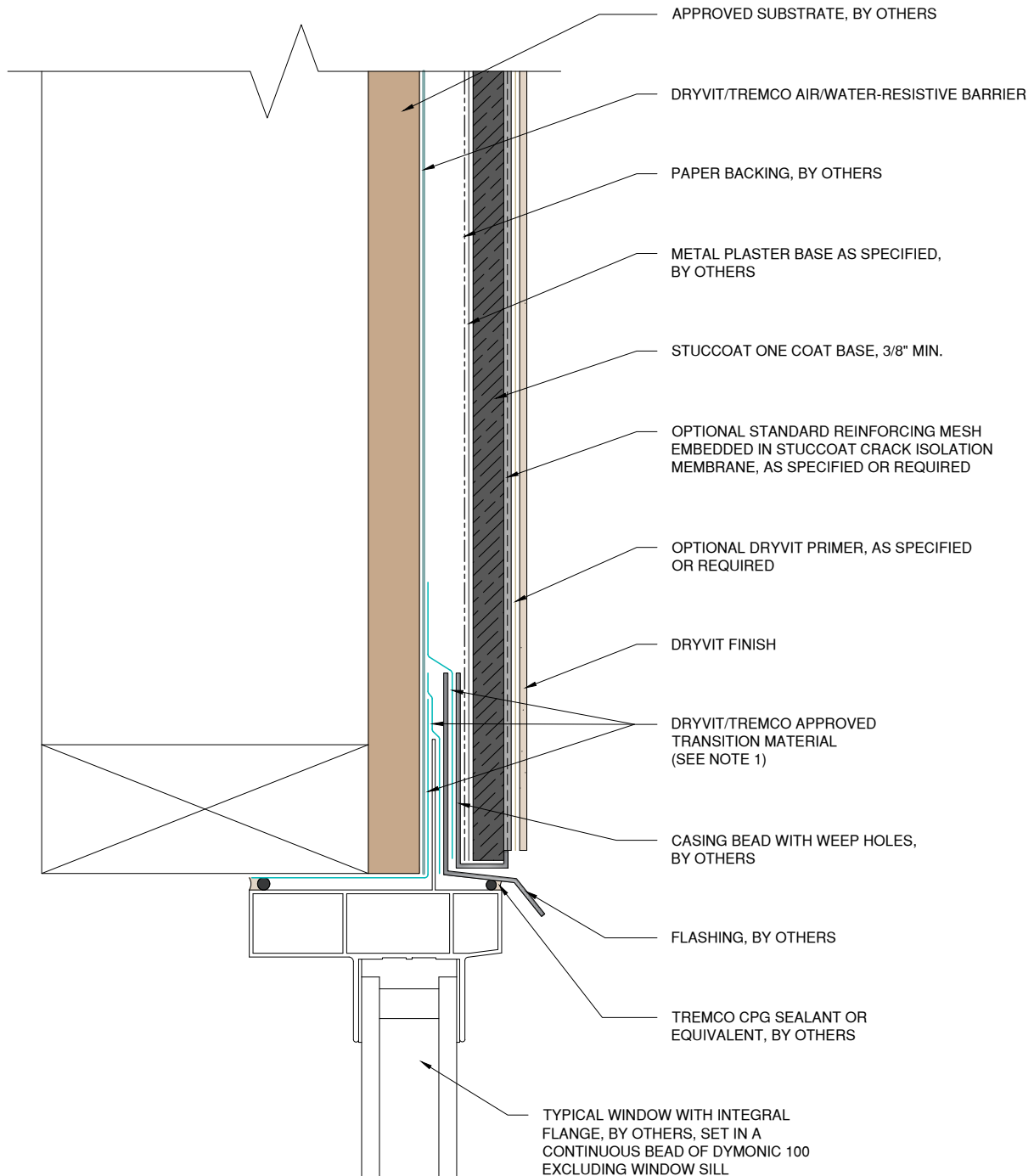
File Name:

SCOC 9



Construction Products Group

www.tremcocpg.com



**NOTE:**

1. REFER TO PRODUCT DATA SHEETS FOR SPECIFIC APPLICATION METHODS.

2. WALL ASSEMBLY SHALL PROVIDE FOR A MAXIMUM DESIGN DEFLECTION OF L/360.

*The architecture, engineering, and design of the project using the Dryvit and Tremco products are the responsibility of the project's design professional. All products and systems must comply with local building codes and standards. This detail is for general information and guidance only and Dryvit and Tremco specifically disclaims any liability for the use of this detail. The project design professional determines, in its sole discretion, whether this detail or a functionally equivalent detail is best suited for the project. This detail is subject to change without notice. Contact Dryvit and Tremco to ensure you have the most recent version.*

**StucCoat One Coat® System**



Dryvit Technical Support: 800-556-7752

Detail: Flanged Window Head

Drawn by: KAB

Checked by: BD/CB

Scale: NTS

Date: 4/2023

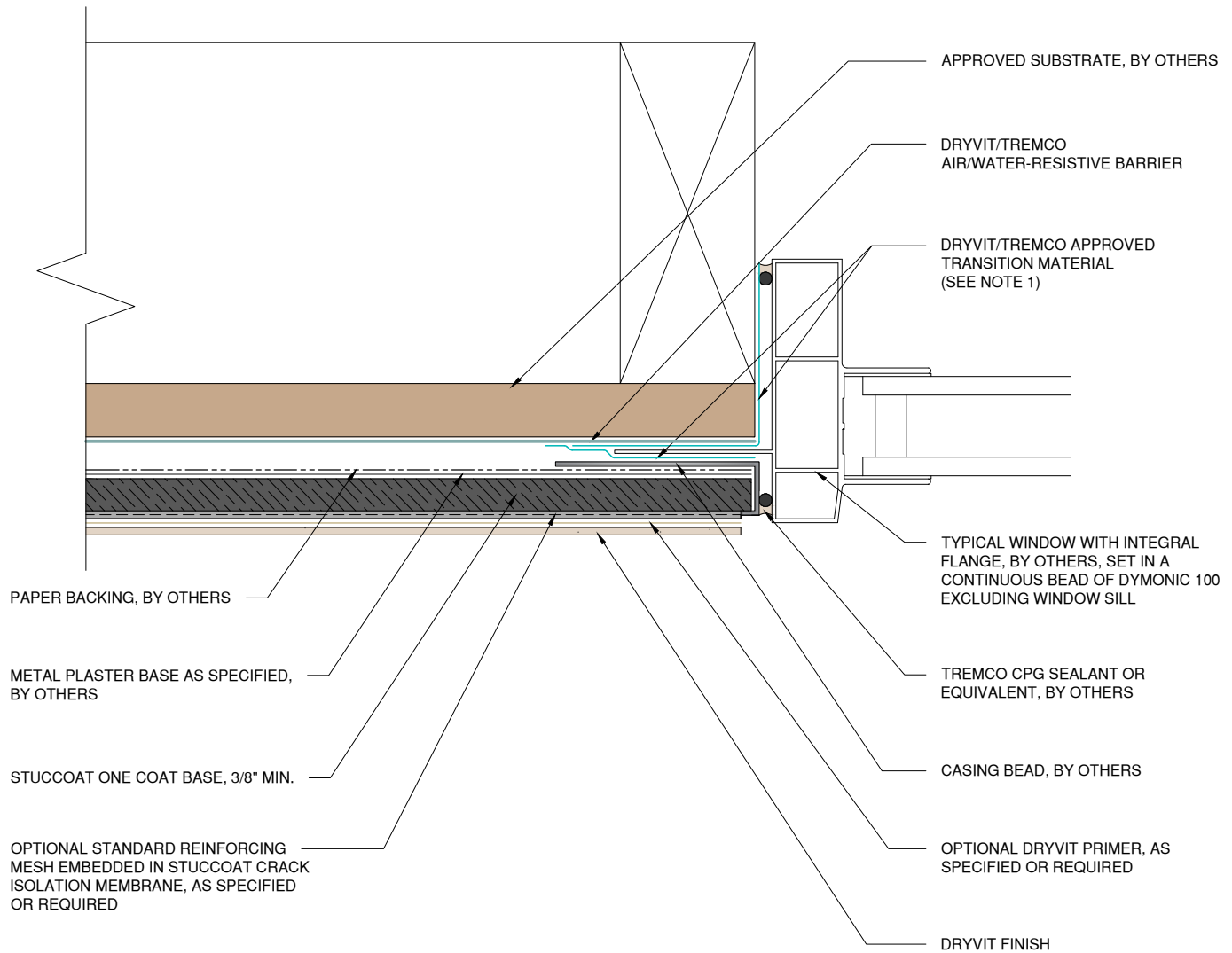
File Name:

SCOC 10



Construction Products Group

[www.tremcocpg.com](http://www.tremcocpg.com)



**NOTE:**

1. REFER TO PRODUCT DATA SHEETS FOR SPECIFIC APPLICATION METHODS.

2. WALL ASSEMBLY SHALL PROVIDE FOR A MAXIMUM DESIGN DEFLECTION OF L/360.

The architecture, engineering, and design of the project using the Dryvit and Tremco products are the responsibility of the project's design professional. All products and systems must comply with local building codes and standards. This detail is for general information and guidance only and Dryvit and Tremco specifically disclaims any liability for the use of this detail. The project design professional determines, in its sole discretion, whether this detail or a functionally equivalent detail is best suited for the project. This detail is subject to change without notice. Contact Dryvit and Tremco to ensure you have the most recent version.

**StucCoat One Coat® System**



Dryvit Technical Support: 800-556-7752

Detail: Flanged Window Jamb

Drawn by: KAB

Checked by: BD/CB

Scale: NTS

Date: 4/2023

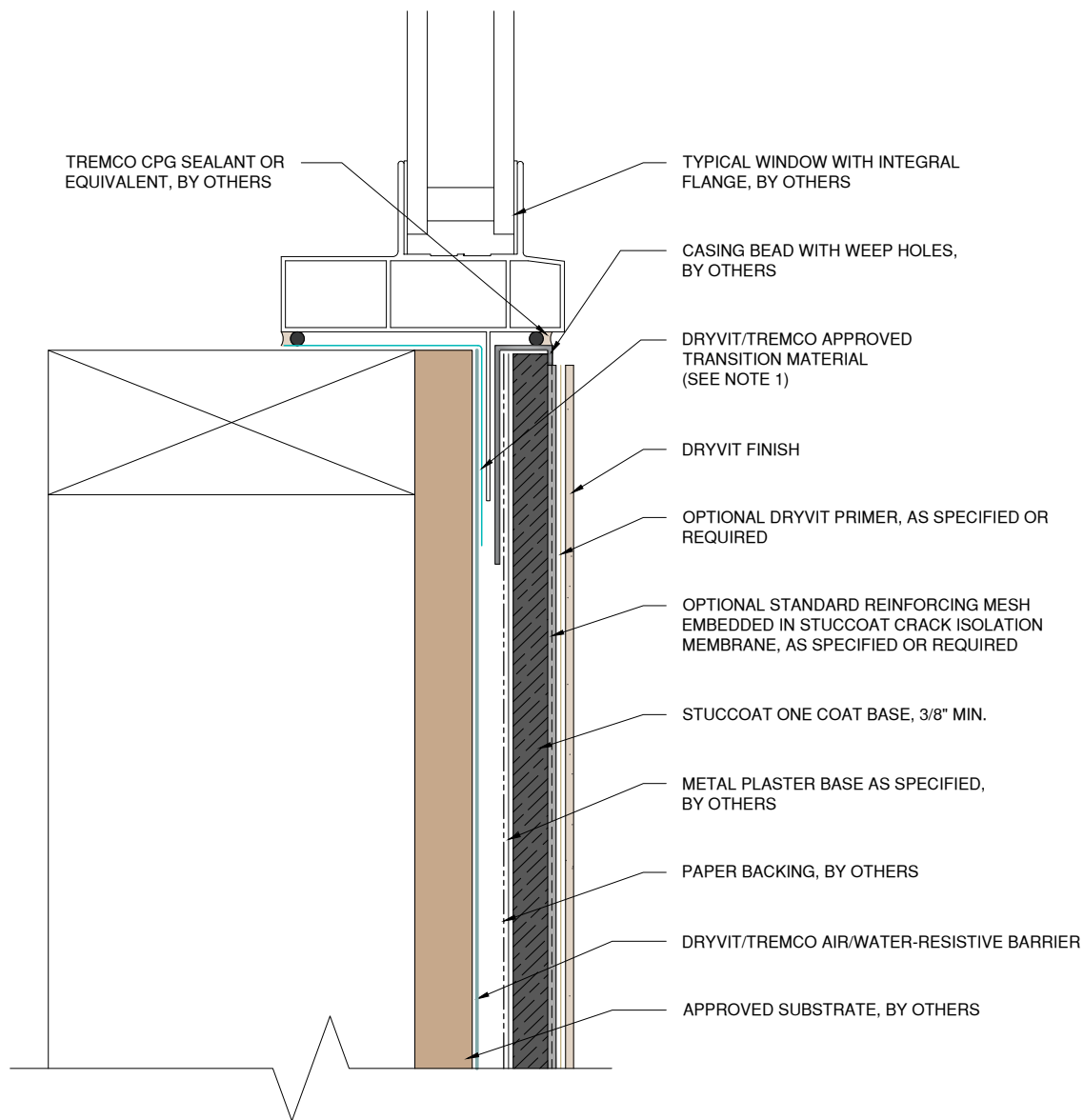
File Name:

SCOC 11



Construction Products Group

www.tremcocpg.com



**NOTE:**

1. REFER TO PRODUCT DATA SHEETS FOR SPECIFIC APPLICATION METHODS.

2. WALL ASSEMBLY SHALL PROVIDE FOR A MAXIMUM DESIGN DEFLECTION OF L/360.

*The architecture, engineering, and design of the project using the Dryvit and Tremco products are the responsibility of the project's design professional. All products and systems must comply with local building codes and standards. This detail is for general information and guidance only and Dryvit and Tremco specifically disclaims any liability for the use of this detail. The project design professional determines, in its sole discretion, whether this detail or a functionally equivalent detail is best suited for the project. This detail is subject to change without notice. Contact Dryvit and Tremco to ensure you have the most recent version.*

**StucCoat One Coat® System**



Dryvit Technical Support: 800-556-7752

Detail: Flanged Window Sill

Drawn by: KAB

Checked by: BD/CB

Scale: NTS

Date: 4/2023

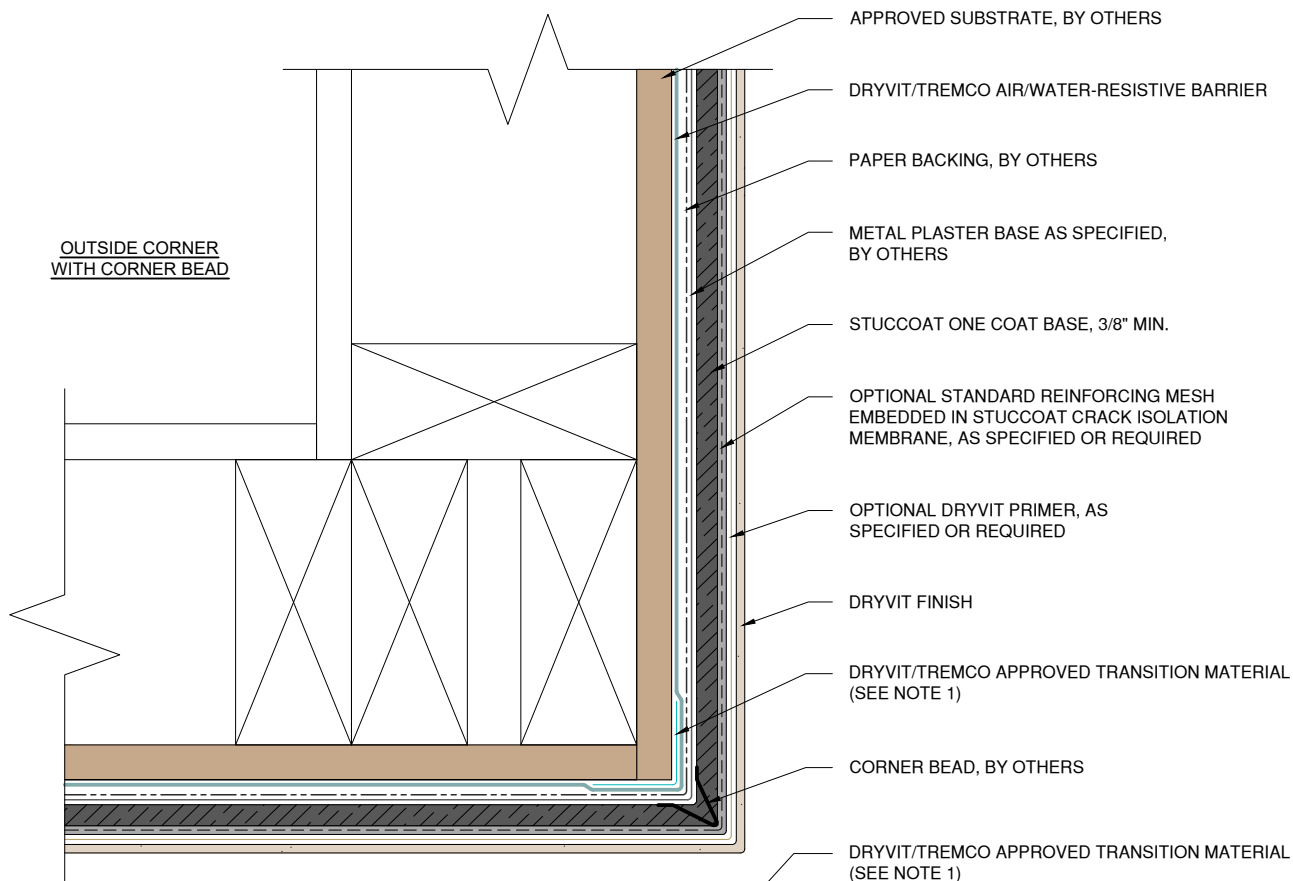
File Name:

SCOC 12



Construction Products Group

[www.tremcocpg.com](http://www.tremcocpg.com)



APPROVED SUBSTRATE, BY OTHERS

DRYVIT/TREMCO  
AIR/WATER-RESISTIVE BARRIER

PAPER BACKING, BY OTHERS

METAL PLASTER BASE AS SPECIFIED,  
BY OTHERS

STUCCOAT ONE COAT BASE, 3/8" MIN.

OPTIONAL STANDARD REINFORCING MESH  
EMBEDDED IN STUCCOAT CRACK  
ISOLATION MEMBRANE, AS SPECIFIED OR  
REQUIRED

OPTIONAL DRYVIT PRIMER, AS  
SPECIFIED OR REQUIRED

DRYVIT FINISH

TYPICAL OUTSIDE CORNER  
WITHOUT CORNER BEAD

**NOTE:**

1. REFER TO PRODUCT DATA SHEETS FOR SPECIFIC APPLICATION METHODS.

2. WALL ASSEMBLY SHALL PROVIDE FOR A MAXIMUM DESIGN DEFLECTION OF L/360.

*The architecture, engineering, and design of the project using the Dryvit and Tremco products are the responsibility of the project's design professional. All products and systems must comply with local building codes and standards. This detail is for general information and guidance only and Dryvit and Tremco specifically disclaims any liability for the use of this detail. The project design professional determines, in its sole discretion, whether this detail or a functionally equivalent detail is best suited for the project. This detail is subject to change without notice. Contact Dryvit and Tremco to ensure you have the most recent version.*

**StucCoat One Coat® System**



Dryvit Technical Support: 800-556-7752

Detail: Outside Corner

Drawn by: KAB

Checked by: BD/CB

Scale: NTS

Date: 4/2023

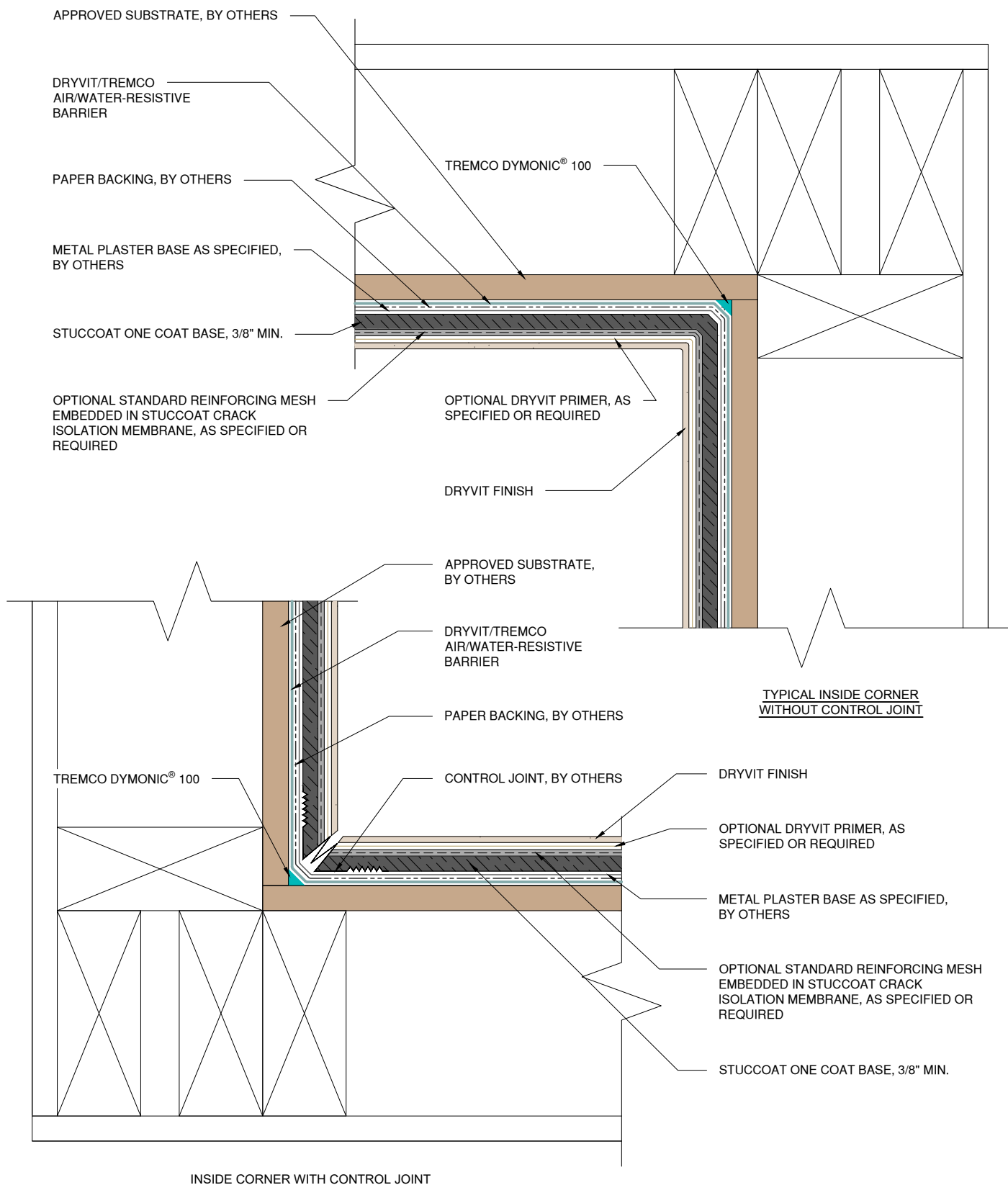
File Name:

SCOC 13



Construction Products Group

[www.tremcocpg.com](http://www.tremcocpg.com)



**NOTE:**

1. REFER TO PRODUCT DATA SHEETS FOR SPECIFIC APPLICATION METHODS.
2. WALL ASSEMBLY SHALL PROVIDE FOR A MAXIMUM DESIGN DEFLECTION OF L/360.

*The architecture, engineering, and design of the project using the Dryvit and Tremco products are the responsibility of the project's design professional. All products and systems must comply with local building codes and standards. This detail is for general information and guidance only and Dryvit and Tremco specifically disclaims any liability for the use of this detail. The project design professional determines, in its sole discretion, whether this detail or a functionally equivalent detail is best suited for the project. This detail is subject to change without notice. Contact Dryvit and Tremco to ensure you have the most recent version.*

### StucCoat One Coat® System



Dryvit Technical Support: 800-556-7752

Detail: Inside Corner

Drawn by: KAB

Checked by: BD/CB

Scale: NTS

Date: 4/2023

File Name:

SCOC 14



Construction Products Group

[www.tremcocpg.com](http://www.tremcocpg.com)



ENGINEERED FRAMING SYSTEM BY  
PREBUCK LLC OR FUNCTIONAL EQUIVALENT

TREMCO ROOF ASSEMBLY  
OR FUNCTIONAL  
EQUIVALENT, BY OTHERS

EXTEND OVER TOP OF  
PARAPET AND FASTENED TO  
OPPOSITE FACE

METAL CAP FLASHING,  
BY OTHERS

DRYVIT/TREMCO APPROVED  
TRANSITION MATERIAL  
(SEE NOTE 1)

CASING BEAD WITH WEEP HOLES,  
BY OTHERS

APPROVED SUBSTRATE, BY OTHERS

DRYVIT/TREMCO  
AIR/WATER-RESISTIVE BARRIER

PAPER BACKING, BY OTHERS

METAL PLASTER BASE AS SPECIFIED,  
BY OTHERS

STUCCOAT ONE COAT BASE, 3/8" MIN.

OPTIONAL STANDARD REINFORCING MESH  
EMBEDDED IN STUCCOAT CRACK  
ISOLATION MEMBRANE, AS SPECIFIED OR  
REQUIRED

OPTIONAL DRYVIT PRIMER, AS  
SPECIFIED OR REQUIRED

DRYVIT FINISH

NOTE:

1. REFER TO PRODUCT DATA SHEETS FOR SPECIFIC  
APPLICATION METHODS.

2. WALL ASSEMBLY SHALL PROVIDE FOR A MAXIMUM  
DESIGN DEFLECTION OF L/360.

The architecture, engineering, and design of the project using the Dryvit and Tremco products are the responsibility of the project's design professional. All products and systems must comply with local building codes and standards. This detail is for general information and guidance only and Dryvit and Tremco specifically disclaims any liability for the use of this detail. The project design professional determines, in its sole discretion, whether this detail or a functionally equivalent detail is best suited for the project. This detail is subject to change without notice. Contact Dryvit and Tremco to ensure you have the most recent version.

**StucCoat One Coat® System**



Dryvit Technical Support: 800-556-7752

Detail: Termination at Parapet - Cap Flashing

Drawn by: KAB

Checked by: BD/CB

Scale: NTS

Date: 4/2023

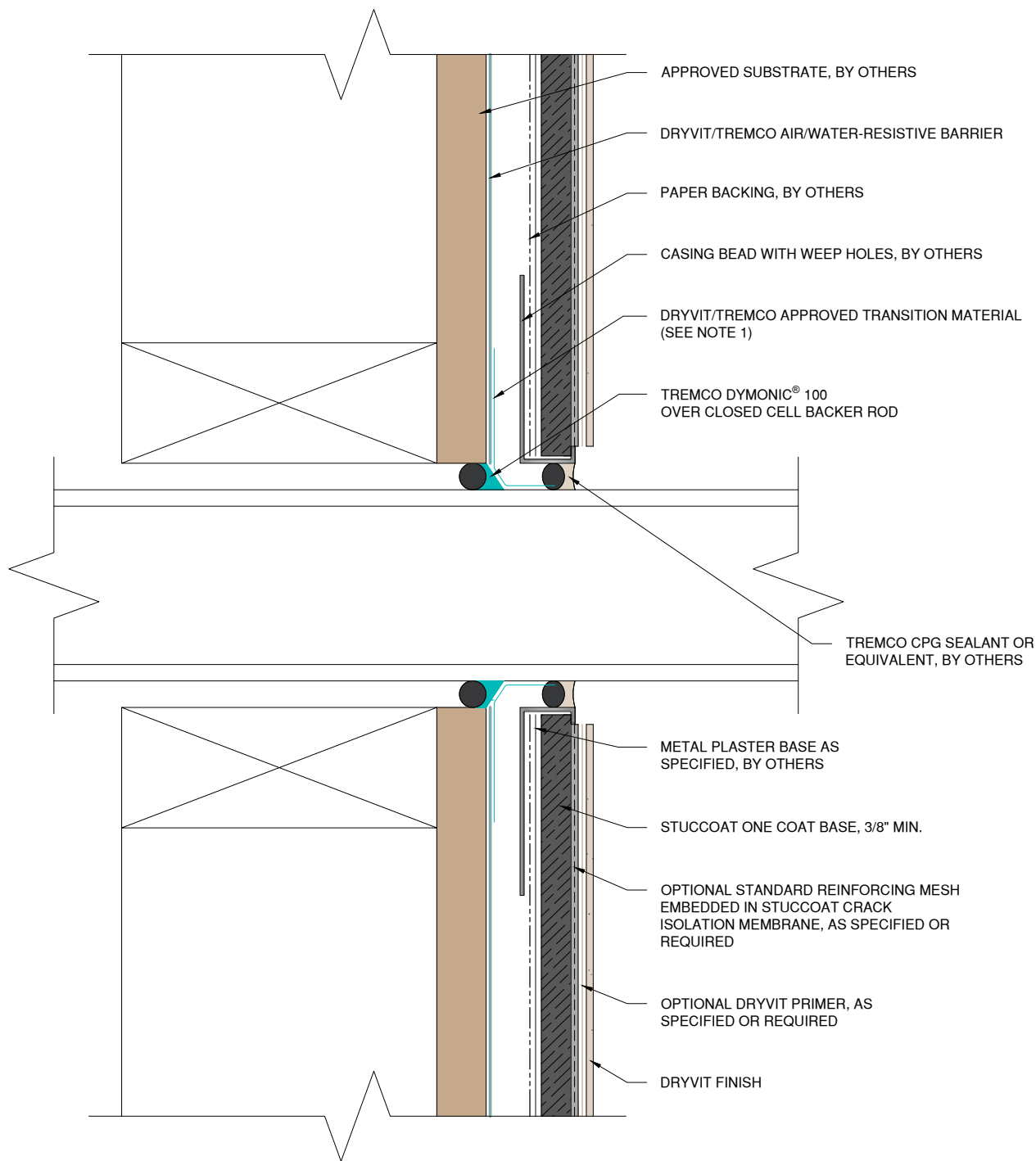
File Name:

SCOC 15

www.tremcocpg.com



Construction Products Group



**NOTE:**

1. REFER TO PRODUCT DATA SHEETS FOR SPECIFIC APPLICATION METHODS.

2. WALL ASSEMBLY SHALL PROVIDE FOR A MAXIMUM DESIGN DEFLECTION OF L/360.

*The architecture, engineering, and design of the project using the Dryvit and Tremco products are the responsibility of the project's design professional. All products and systems must comply with local building codes and standards. This detail is for general information and guidance only and Dryvit and Tremco specifically disclaims any liability for the use of this detail. The project design professional determines, in its sole discretion, whether this detail or a functionally equivalent detail is best suited for the project. This detail is subject to change without notice. Contact Dryvit and Tremco to ensure you have the most recent version.*

**StucCoat One Coat® System**



Dryvit Technical Support: 800-556-7752

Detail: Penetration

Drawn by: KAB

Checked by: BD/CB

Scale: NTS

Date: 4/2023

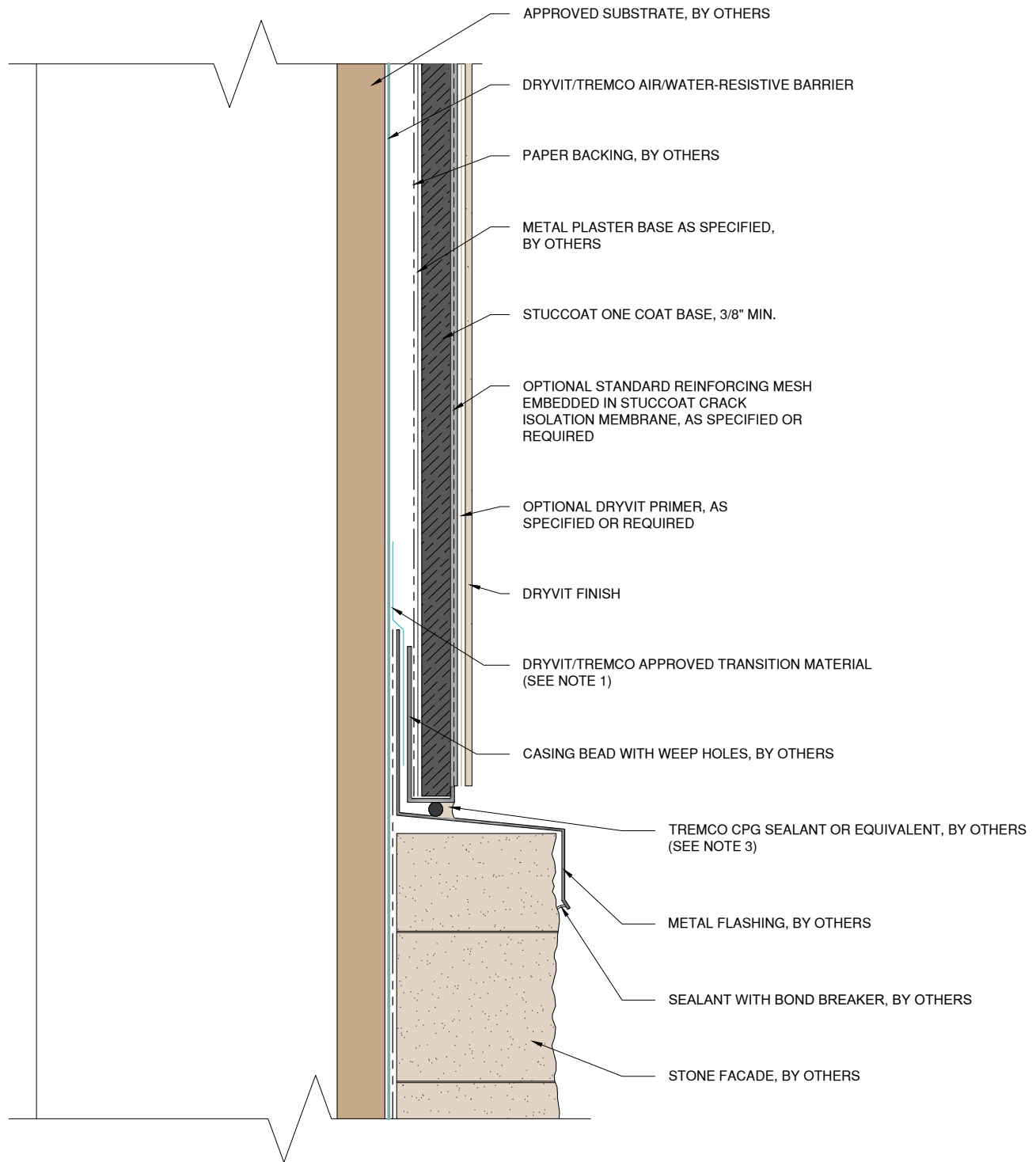
File Name:

SCOC 16



Construction Products Group

[www.tremcocpg.com](http://www.tremcocpg.com)



**NOTE:**

1. REFER TO PRODUCT DATA SHEETS FOR SPECIFIC APPLICATION METHODS.

2. WALL ASSEMBLY SHALL PROVIDE FOR A MAXIMUM DESIGN DEFLECTION OF L/360.

3. BACKER ROD AND SEALANT JOINT SHALL NOT COVER OR OBSTRUCT CASING BEAD WEEP HOLES

*The architecture, engineering, and design of the project using the Dryvit and Tremco products are the responsibility of the project's design professional. All products and systems must comply with local building codes and standards. This detail is for general information and guidance only and Dryvit and Tremco specifically disclaims any liability for the use of this detail. The project design professional determines, in its sole discretion, whether this detail or a functionally equivalent detail is best suited for the project. This detail is subject to change without notice. Contact Dryvit and Tremco to ensure you have the most recent version.*

**StucCoat One Coat® System**



Dryvit Technical Support: 800-556-7752

Detail: Horizontal Termination at Stone Veneer

Drawn by: KAB

Checked by: BD/CB

Scale: NTS

Date: 4/2023

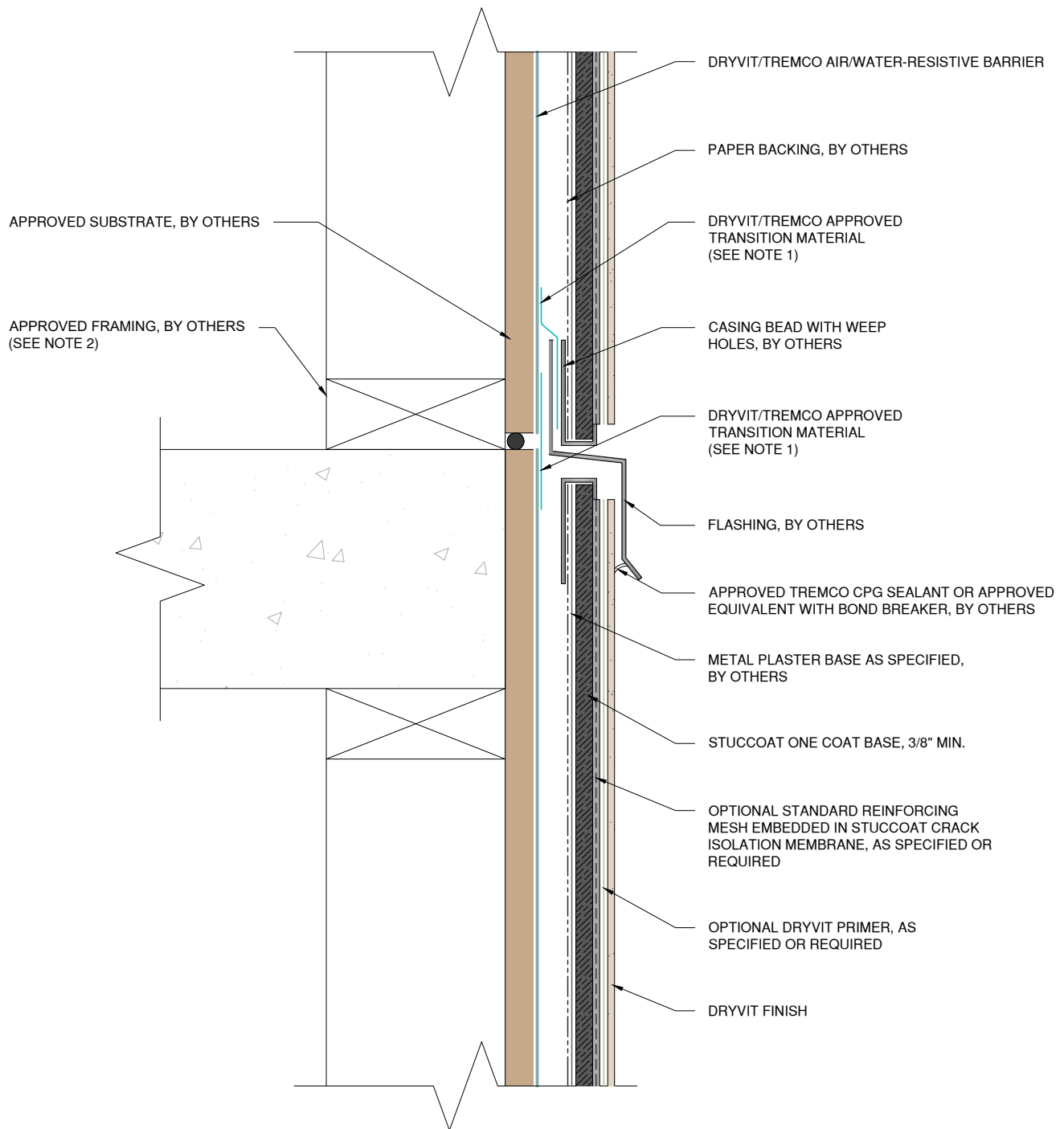
File Name:

SCOC 17



Construction Products Group

[www.tremcocpg.com](http://www.tremcocpg.com)

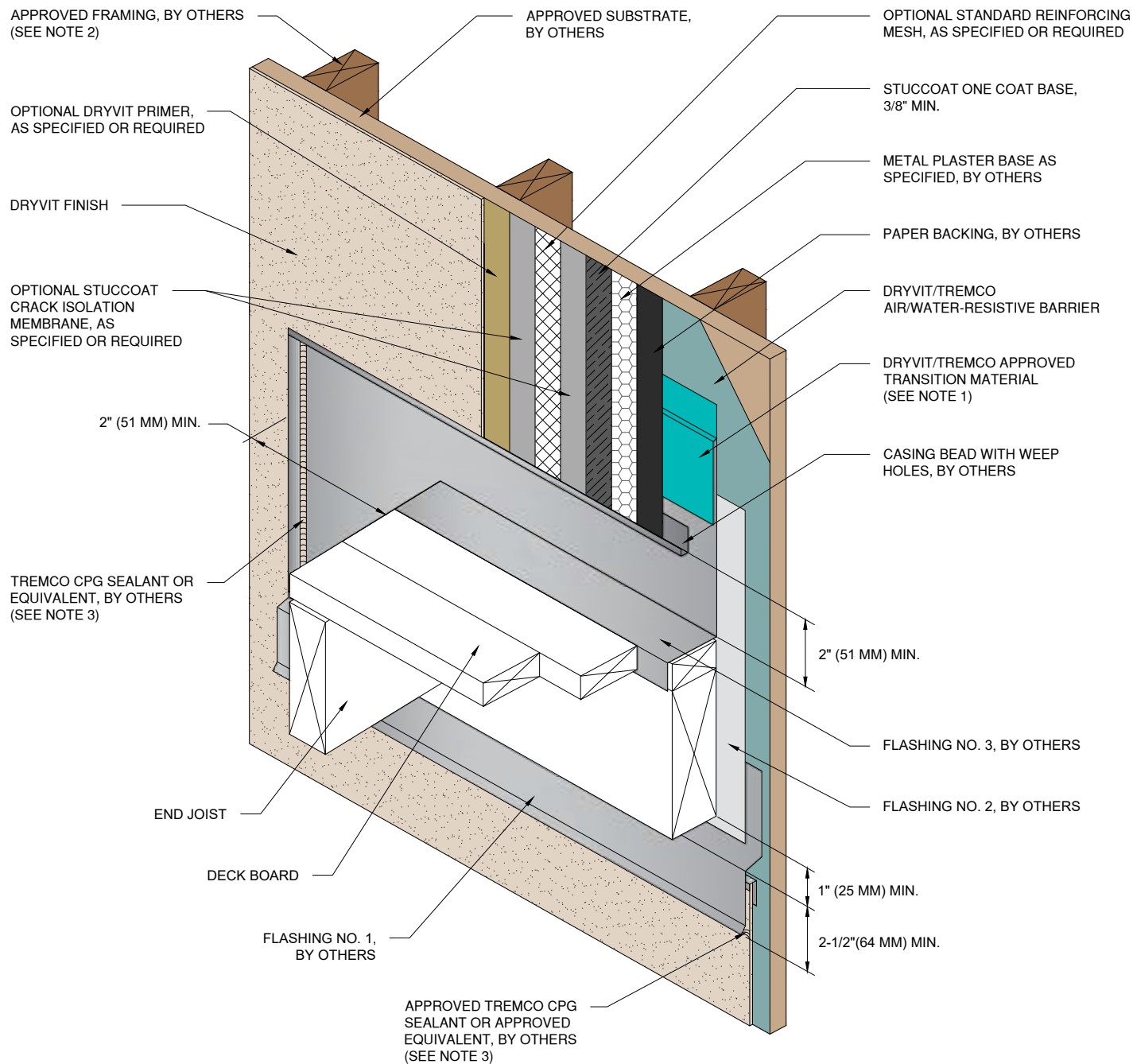


NOTE:  
 1. REFER TO PRODUCT DATA SHEETS FOR SPECIFIC APPLICATION METHODS.  
 2. WALL ASSEMBLY SHALL PROVIDE FOR A MAXIMUM DESIGN DEFLECTION OF L/360.

The architecture, engineering, and design of the project using the Dryvit and Tremco products are the responsibility of the project's design professional. All products and systems must comply with local building codes and standards. This detail is for general information and guidance only and Dryvit and Tremco specifically disclaims any liability for the use of this detail. The project design professional determines, in its sole discretion, whether this detail or a functionally equivalent detail is best suited for the project. This detail is subject to change without notice. Contact Dryvit and Tremco to ensure you have the most recent version.

**StucCoat One Coat® System**

 Dryvit Technical Support: 800-556-7752	Detail: Horizontal Flashing & Expansion Joint				File Name:	
	Drawn by: KAB	Checked by: BD/CB	Scale: NTS	Date: 4/2023	SCOC 18	
	www.tremcocpg.com				 Construction Products Group	



NOTE:

1. REFER TO PRODUCT DATA SHEETS FOR SPECIFIC APPLICATION METHODS.

2. WALL ASSEMBLY SHALL PROVIDE FOR A MAXIMUM DESIGN DEFLECTION OF L/360.

3. BACKER ROD AND SEALANT JOINT SHALL NOT COVER OR OBSTRUCT CASING BEAD WEEP HOLES.

4. DETAIL DOES NOT APPLY TO CANTILEVERED DECKS. CANTILEVERED DECKS REQUIRE JOB SPECIFIC FLASHING DETAILS.

The architecture, engineering, and design of the project using the Dryvit and Tremco products are the responsibility of the project's design professional. All products and systems must comply with local building codes and standards. This detail is for general information and guidance only and Dryvit and Tremco specifically disclaims any liability for the use of this detail. The project design professional determines, in its sole discretion, whether this detail or a functionally equivalent detail is best suited for the project. This detail is subject to change without notice. Contact Dryvit and Tremco to ensure you have the most recent version.

**StucCoat One Coat® System**



Dryvit Technical Support: 800-556-7752

Detail: Termination at Wood Framed Deck

Drawn by: KAB

Checked by: BD/CB

Scale: NTS

Date: 4/2023

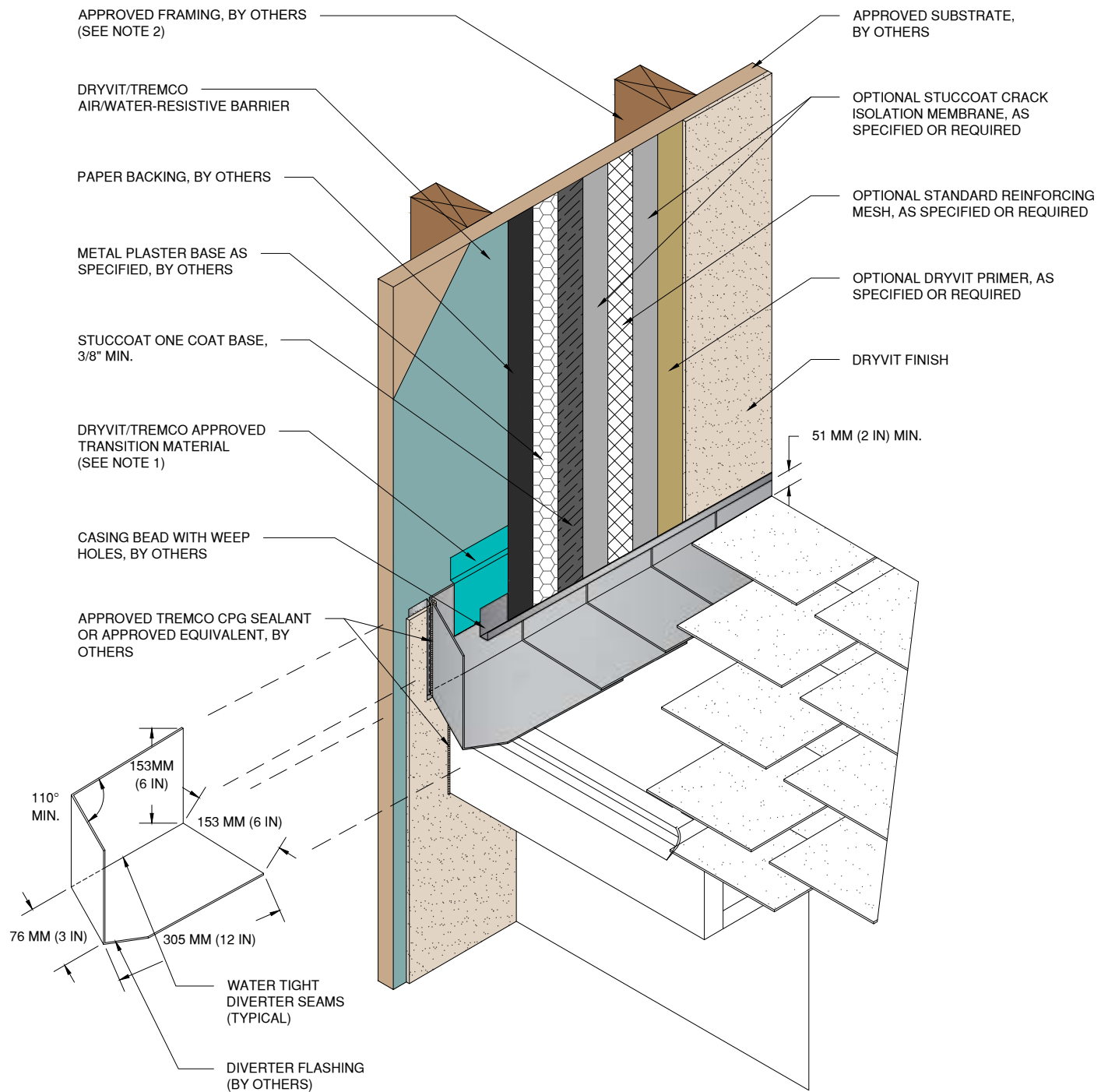
File Name:

SCOC 19



Construction Products Group

www.tremcocpg.com



**NOTE:**

1. REFER TO PRODUCT DATA SHEETS FOR SPECIFIC APPLICATION METHODS.

2. WALL ASSEMBLY SHALL PROVIDE FOR A MAXIMUM DESIGN DEFLECTION OF L/360.

The architecture, engineering, and design of the project using the Dryvit and Tremco products are the responsibility of the project's design professional. All products and systems must comply with local building codes and standards. This detail is for general information and guidance only and Dryvit and Tremco specifically disclaims any liability for the use of this detail. The project design professional determines, in its sole discretion, whether this detail or a functionally equivalent detail is best suited for the project. This detail is subject to change without notice. Contact Dryvit and Tremco to ensure you have the most recent version.

### StucCoat One Coat® System



Dryvit Technical Support: 800-556-7752

Detail: Termination at Roof/Wall Intersection

Drawn by: KAB

Checked by: BD/CB

Scale: NTS

Date: 4/2023

File Name:

SCOC 20

[www.tremcocpg.com](http://www.tremcocpg.com)



Construction Products Group