

**StucCoat[®] One Coat
Securock[®] ExoAir[®] 430 System**



DS995

A Fire-Rated, Stucco System Assembly for Residential and Commercial Buildings
with Insulated and Crack-Resistant (CRS) Optional Components

**StucCoat One Coat
Securock ExoAir 430 System
with Continuous Insulation
Installation Details**



Table of Contents

Detail

STUCCOAT ONE COAT SECUROCK EXOAIR 430 SYSTEM WITH CONTINUOUS INSULATION	SCOC CI SE430 1
BOARD JOINT AND FASTENER TREATMENT	SCOC CI SE430 2
ROUGH OPENING PREPARATION - DYMONIC 100	SCOC CI SE430 3
OPENING FLASHING INTEGRATION - DYMONIC 100	SCOC CI SE430 4
ROUGH OPENING PREPARATION - EXOAIR 110AT	SCOC CI SE430 5
OPENING FLASHING INTEGRATION - EXOAIR 110AT	SCOC CI SE430 6
FLANGED WINDOW HEAD	SCOC CI SE430 7
FLANGED WINDOW SILL	SCOC CI SE430 8
FLANGED WINDOW SILL	SCOC CI SE430 9
OUTSIDE CORNER	SCOC CI SE430 10
INSIDE CORNER	SCOC CI SE430 11
TERMINATION AT PARAPET - CAP FLASHING	SCOC CI SE430 12
PENETRATION	SCOC CI SE430 13
HORIZONTAL TERMINATION AT STONE VENEER	SCOC CI SE430 14
HORIZONTAL FLASHING AND EXPANSION JOINT	SCOC CI SE430 15
TERMINATION AT WOOD FRAMED DECK	SCOC CI SE430 16
TERMINATION AT ROOF/WALL INTERSECTION	SCOC CI SE430 17

NOTE:

DRYVIT, TREMCO AND USG MAKE NO REPRESENTATION REGARDING CONFORMITY OF ITS SUGGESTIONS TO MODEL BUILDING CODES, ENGINEERING CRITERIA, SPECIFIC APPLICATIONS, OR PROJECT LOCATIONS. ALL COMPONENTS INDICATED IN ILLUSTRATIONS, AS WELL AS OTHERS THAT MAY BE REQUIRED FOR THE INTEGRITY OF THE SYSTEM SHALL BE DESIGNED, DETAILED, AND ENGINEERED BY REPRESENTATIVES OF THE ARCHITECT, OWNER, OR CONTRACTOR TO BE IN CONFORMANCE WITH MODEL CODES, ARCHITECTURAL, AND ENGINEERING REQUIREMENTS PERTAINING TO SPECIFIC BUILDING PROJECTS.

DRYVIT, TREMCO AND USG MAKE NO WARRANTY, EXPRESSED OR IMPLIED, AS TO THE ARCHITECTURAL DESIGN, ENGINEERING, OR WORKMANSHIP OF PROJECTS UTILIZING DRYVIT SYSTEMS OR PRODUCTS.

THE LIABILITIES OF DRYVIT, TREMCO AND USG SHALL BE AS STATED IN THE DRYVIT STANDARD WARRANTY. CONTACT DRYVIT, TREMCO AND USG FOR A FULL AND COMPLETE COPY OF THE WARRANTY.

The architecture, engineering, and design of the project using the Tremco CPG Inc. and USG products are the responsibility of the project's design professional. All products and systems must comply with local building codes and standards. This detail is for general information and guidance only and Tremco CPG Inc. and USG specifically disclaims any liability for the use of this detail. The project design professional determines, in its sole discretion, whether this detail or a functionally equivalent detail is best suited for the project. This detail is subject to change without notice. Contact Tremco CPG Inc. to ensure you have the most recent version.



Dryvit Technical Support: 800-556-7752

StucCoat One Coat® Securock® ExoAir 430 System



Technical Support: 866-209-2404

Detail: Table of Contents

Drawn by: KAB

Checked by:

Scale: NTS

Date: 4/2023

File Name:

TOC



www.tremcocpg.com

APPROVED FRAMING, BY OTHERS
(SEE NOTE 2)

SECUROCK® EXOAIR® 430

PAPER BACKING, BY OTHERS

OPTIONAL 1" MAX. EPS OR XPS
INSULATION, BY OTHERS
(SEE NOTE 3)

METAL PLASTER BASE AS SPECIFIED,
BY OTHERS

STUCCOAT ONE COAT BASE, 3/8" MIN.

STANDARD REINFORCING MESH

STUCCOAT CRACK ISOLATION
MEMBRANE

DRYVIT PRIMER, AS SPECIFIED OR
REQUIRED

WEATHERLASTIC® FINISH

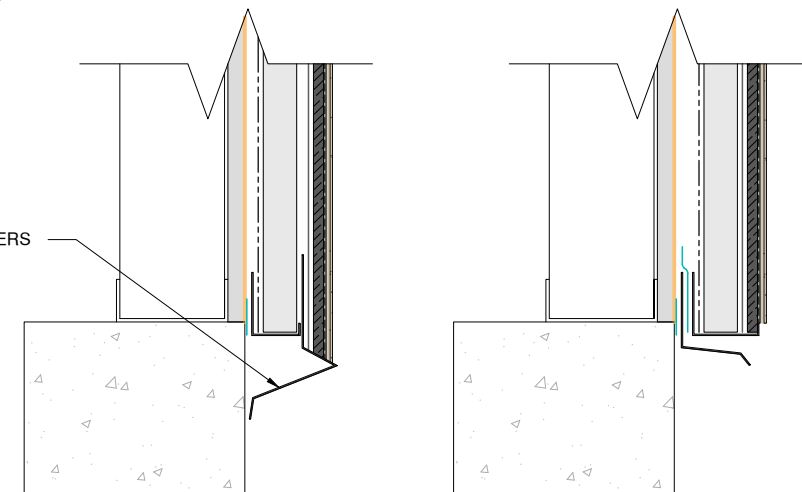
CASING BEAD WITH WEEP
HOLES, BY OTHERS

TREMCO DYMONIC® 100 OR
TREMCO EXOAIR® 110AT WITH
DYMONIC 100 TERMINATION BEAD
(SEE NOTE 1)

FLASHING, BY OTHERS

TREMCO DYMONIC® 100
(SEE NOTE 1)

WEEP SCREED, BY OTHERS



WEEP SCREED OPTION SECTION DETAIL

SECTION DETAIL

NOTE:

1. REFER TO PRODUCT DATA SHEETS FOR SPECIFIC APPLICATION METHODS.

2. WALL ASSEMBLY SHALL PROVIDE FOR A MAXIMUM DESIGN DEFLECTION OF L/360.

3. OPTIONAL CONTINUOUS INSULATION BOARD HAVE MINIMUM 1/4" WIDE x 1/8" DEEP GROOVES SPACED 12" ON CENTER. GROOVES SHALL BE ORIENTATED VERTICALLY WHEN INSTALLED. JOINTS SHALL BE 1/8" OR LESS AND CLOSED ON THE EXTERIOR SIDE USING MINIMUM 2 3/8" WIDE FIBERGLASS MESH TAPE.

The architecture, engineering, and design of the project using the Tremco CPG Inc. and USG products are the responsibility of the project's design professional. All products and systems must comply with local building codes and standards. This detail is for general information and guidance only and Tremco CPG Inc. and USG specifically disclaims any liability for the use of this detail. The project design professional determines, in its sole discretion, whether this detail or a functionally equivalent detail is best suited for the project. This detail is subject to change without notice. Contact Tremco CPG Inc. to ensure you have the most recent version.



Dryvit Technical Support: 800-556-7752

StucCoat One Coat® Securock® ExoAir 430 System



Detail: StucCoat One Coat Securock ExoAir 430 System with Continuous Insulation

File Name:

Drawn by: KAB

Checked by: BD/CB

Scale: NTS

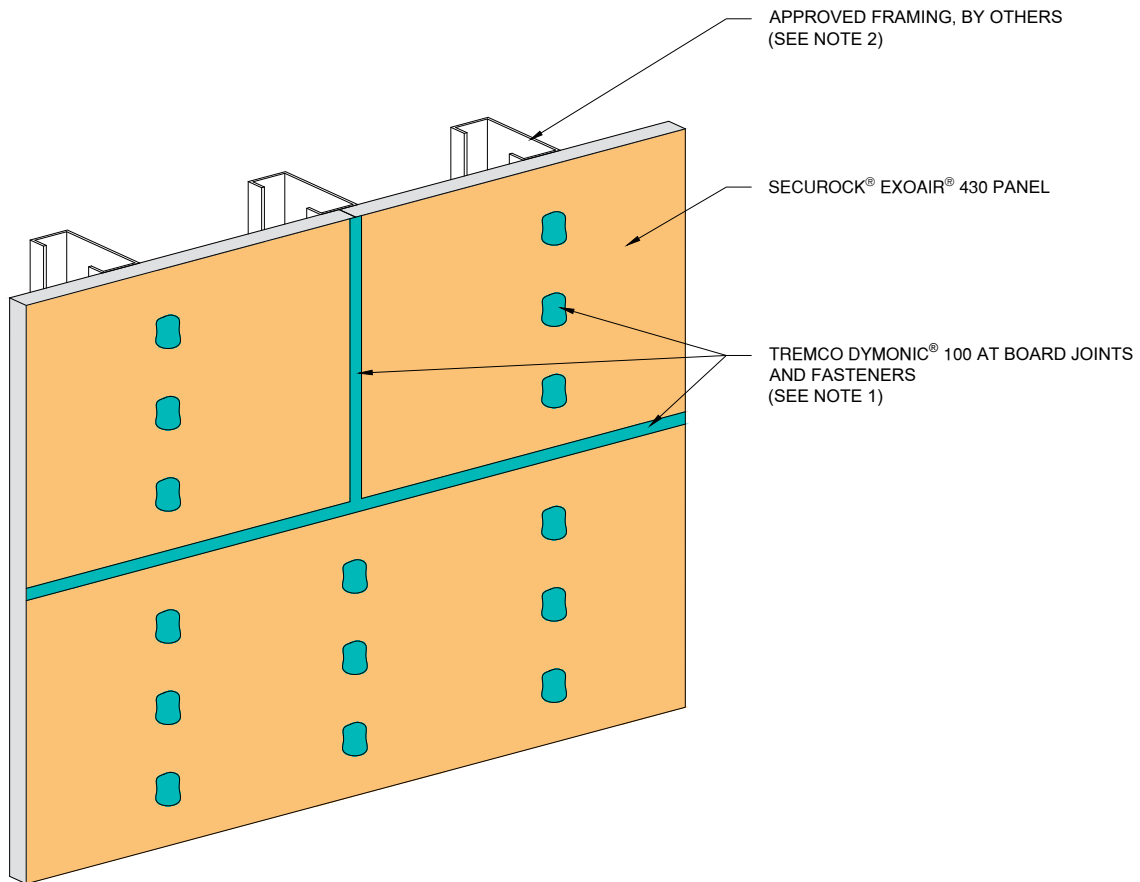
Date: 4/2023

SCOC CI SE430 1



Technical Support: 866-209-2404

www.tremcocpg.com



- NOTE:
1. APPLY DYMONIC 100 ENSURING MINIMUM OVERLAP OF 3/4" (19 MM) ONTO EACH PANEL AT 40 MILS.
 2. WALL ASSEMBLY SHALL PROVIDE FOR A MAXIMUM DESIGN DEFLECTION OF L/360.

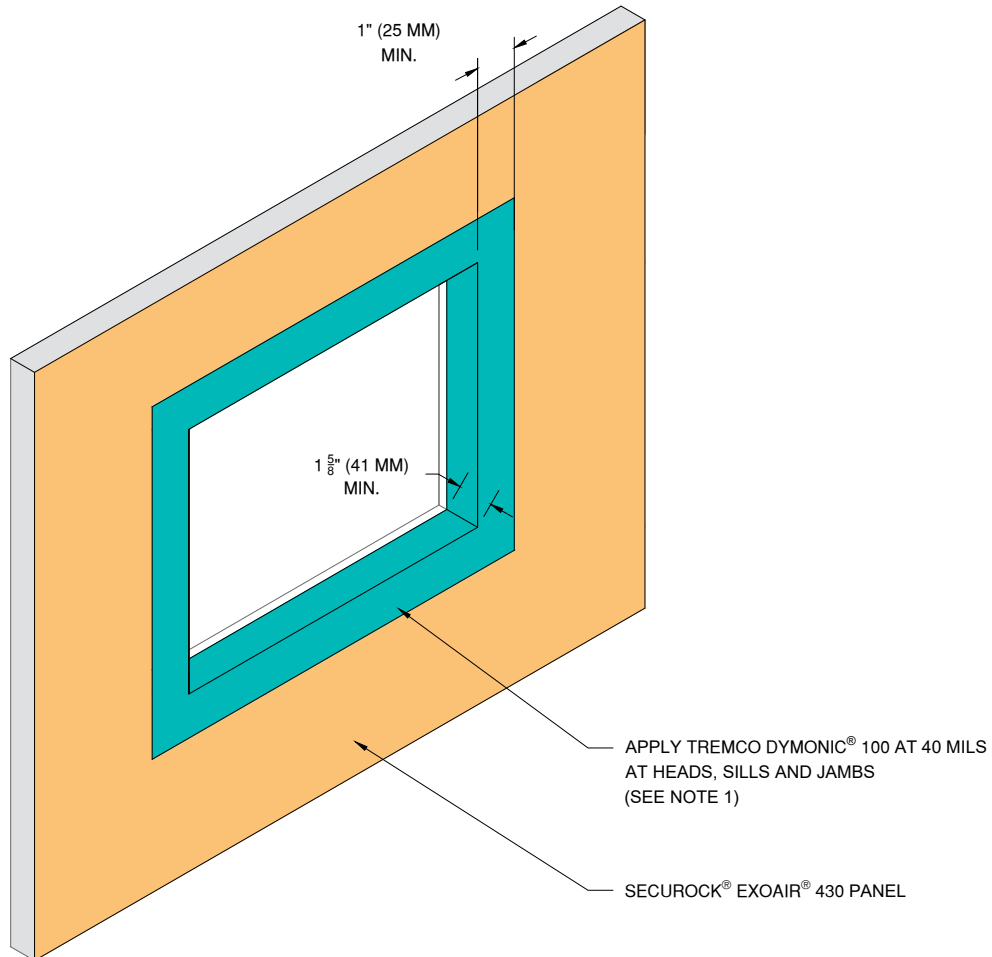
The architecture, engineering, and design of the project using the Tremco CPG Inc. and USG products are the responsibility of the project's design professional. All products and systems must comply with local building codes and standards. This detail is for general information and guidance only and Tremco CPG Inc. and USG specifically disclaims any liability for the use of this detail. The project design professional determines, in its sole discretion, whether this detail or a functionally equivalent detail is best suited for the project. This detail is subject to change without notice. Contact Tremco CPG Inc. to ensure you have the most recent version.



Dryvit Technical Support: 800-556-7752

StucCoat One Coat® Securock® ExoAir 430 System

<p>SECUROCK® EXOAIR® 430</p> <p>Technical Support: 866-209-2404</p>	Detail: Board Joint and Fastener Treatment			File Name:		<p>Construction Products Group</p>
	Drawn by: KAB	Checked by: BD/CB	Scale: NTS	Date: 4/2023	SCOC CI SE430 2	
www.tremcocpg.com						



NOTE:
 1. APPLY DYMONIC 100 AT 40 MILS 1" (25 MM) MIN. ONTO FACE OF SECUROCK EXOAIR 430 PANEL AND 1 1/8" (41 MM) MIN. INTO ROUGH OPENING OR PAST PRIMARY SEAL OF WINDOW.

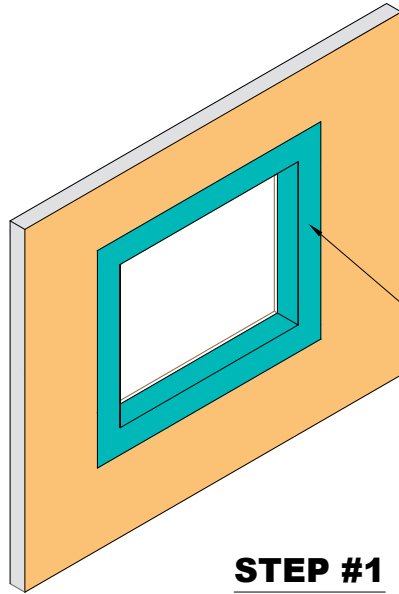
The architecture, engineering, and design of the project using the Tremco CPG Inc. and USG products are the responsibility of the project's design professional. All products and systems must comply with local building codes and standards. This detail is for general information and guidance only and Tremco CPG Inc. and USG specifically disclaims any liability for the use of this detail. The project design professional determines, in its sole discretion, whether this detail or a functionally equivalent detail is best suited for the project. This detail is subject to change without notice. Contact Tremco CPG Inc. to ensure you have the most recent version.



Dryvit Technical Support: 800-556-7752

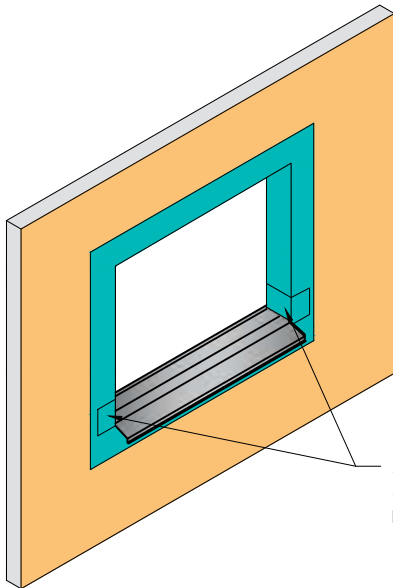
StucCoat One Coat® Securock® ExoAir 430 System

 SECUROCK® EXOAIR® 430 <small>Technical Support: 866-209-2404</small>	Detail: Rough Opening Preparation - Tremco Dymonic 100 Option			File Name:	
	Drawn by: KAB	Checked by: BD/CB	Scale: NTS	Date: 4/2023	SCOC CI SE430 3
www.tremcocpg.com					 TREMCO <small>Construction Products Group</small>



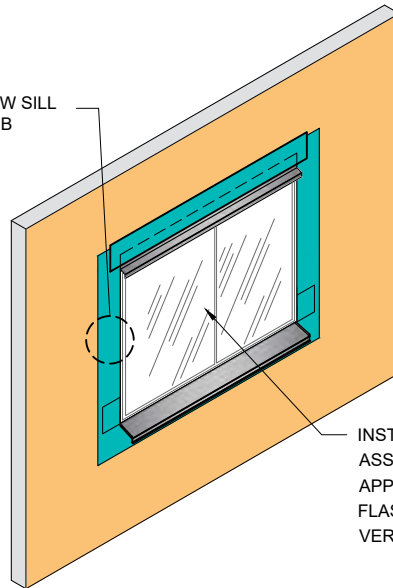
REFER TO ROUGH OPENING
PREPARATION DETAIL FOR PREPARATION
OF OPENING PRIOR TO FLASHING
INSTALLATION

STEP #1



APPLY TREMCO DYMONIC® 100 AT
40 MILS LAPPING OVER LIP OF SILL
PAN FLASHING.

STEP #2



REFER TO WINDOW SILL
DETAILS FOR JAMB
DETAIL

INSTALL WINDOW UNIT AND
ASSOCIATED FLASHINGS AND
APPLY TREMCO DYMONIC® 100
FLASHING SYSTEM OVER
VERTICAL LEG OF FLASHING

STEP #3



Dryvit Technical Support: 800-556-7752

The architecture, engineering, and design of the project using the Tremco CPG Inc. and USG products are the responsibility of the project's design professional. All products and systems must comply with local building codes and standards. This detail is for general information and guidance only and Tremco CPG Inc. and USG specifically disclaims any liability for the use of this detail. The project design professional determines, in its sole discretion, whether this detail or a functionally equivalent detail is best suited for the project. This detail is subject to change without notice. Contact Tremco CPG Inc. to ensure you have the most recent version.

StucCoat One Coat® Securock® ExoAir 430 System



SECUROCK® EXOAIR® 430

Technical Support: 866-209-2404

Detail: Opening Flashing Integration - Tremco Dymonic 100 Option

Drawn by: KAB

Checked by: BD/CB

Scale: NTS

Date: 4/2023

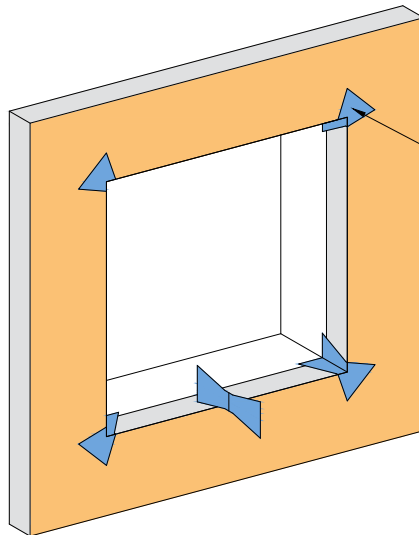
File Name:

SCOC CI SE430 4



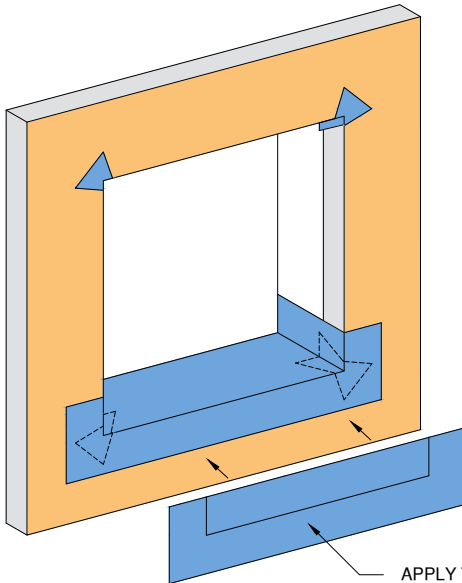
Construction Products Group

www.tremcocpg.com



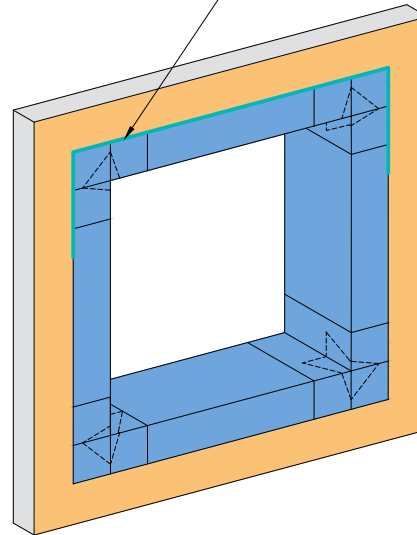
TREMCO EXOAIR® 110AT BOW TIES
INSTALLED AT ROUGH OPENING CORNERS

STEP #1



APPLY TREMCO EXOAIR® 110AT 3" MIN INTO
ROUGH OPENING AND EXTERIOR FACE OF
WALL AT SILLS, JAMBS AND HEADS

STEP #2



APPLY TREMCO DYMONIC® 100 ACROSS
EDGE OF TREMCO® EXOAIR 110AT AT
WINDOW HEAD AND DOWN JAMBS 6"

STEP #3



Dryvit Technical Support: 800-556-7752

The architecture, engineering, and design of the project using the Tremco CPG Inc. and USG products are the responsibility of the project's design professional. All products and systems must comply with local building codes and standards. This detail is for general information and guidance only and Tremco CPG Inc. and USG specifically disclaims any liability for the use of this detail. The project design professional determines, in its sole discretion, whether this detail or a functionally equivalent detail is best suited for the project. This detail is subject to change without notice. Contact Tremco CPG Inc. to ensure you have the most recent version.

StucCoat One Coat® Securock® ExoAir 430 System



SECUROCK® EXOAIR® 430

Technical Support: 866-209-2404

Detail: Rough Opening Preparation - Tremco ExoAir 110AT Option

Drawn by: KAB

Checked by: BD/CB

Scale: NTS

Date: 4/2023

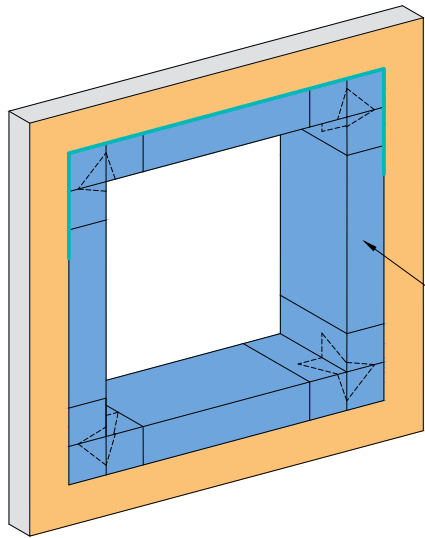
File Name:

SCOC CI SE430 5



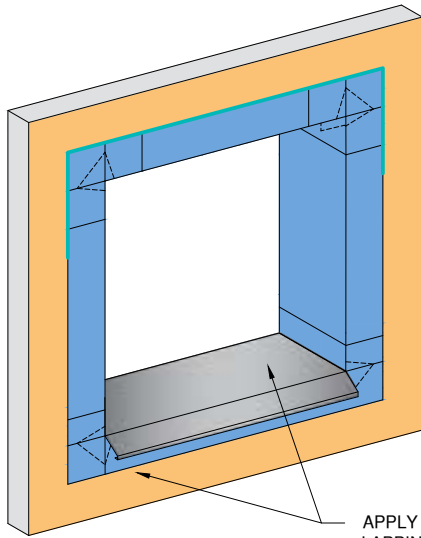
Construction Products Group

www.tremcocpg.com



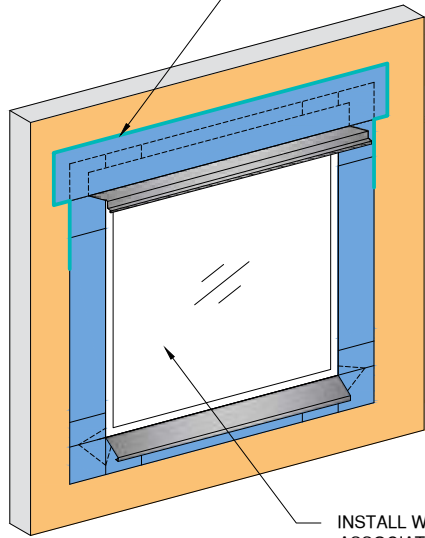
REFER TO OPENING PREPARATION
DETAILS FOR DETAILING OF OPENING
PRIOR TO FLASHING INSTALLATION

STEP #1



APPLY TREMCO EXOAIR® 110AT
LAPPING OVER LIP OF SILL PAN FLASHING
(SEE NOTE 1)

STEP #2



APPLY TREMCO DYMONIC® 100 ACROSS
EDGE OF TREMCO® EXOAIR 110AT AT
WINDOW HEAD AND DOWN JAMBS 6"

INSTALL WINDOW UNIT AND
ASSOCIATED FLASHINGS AND
APPLY TREMCO EXOAIR® 110AT
OVER VERTICAL LEG OF
FLASHING (SEE NOTE 1)

STEP #3

NOTE:
1. INSTALL WINDOW UNIT AND ASSOCIATED FLASHINGS
PER MANUFACTURER'S RECOMMENDATIONS, CODE
REQUIREMENTS AND PROJECT DOCUMENTS.

The architecture, engineering, and design of the project using the Tremco CPG Inc. and USG products are the responsibility of the project's design professional. All products and systems must comply with local building codes and standards. This detail is for general information and guidance only and Tremco CPG Inc. and USG specifically disclaims any liability for the use of this detail. The project design professional determines, in its sole discretion, whether this detail or a functionally equivalent detail is best suited for the project. This detail is subject to change without notice. Contact Tremco CPG Inc. to ensure you have the most recent version.



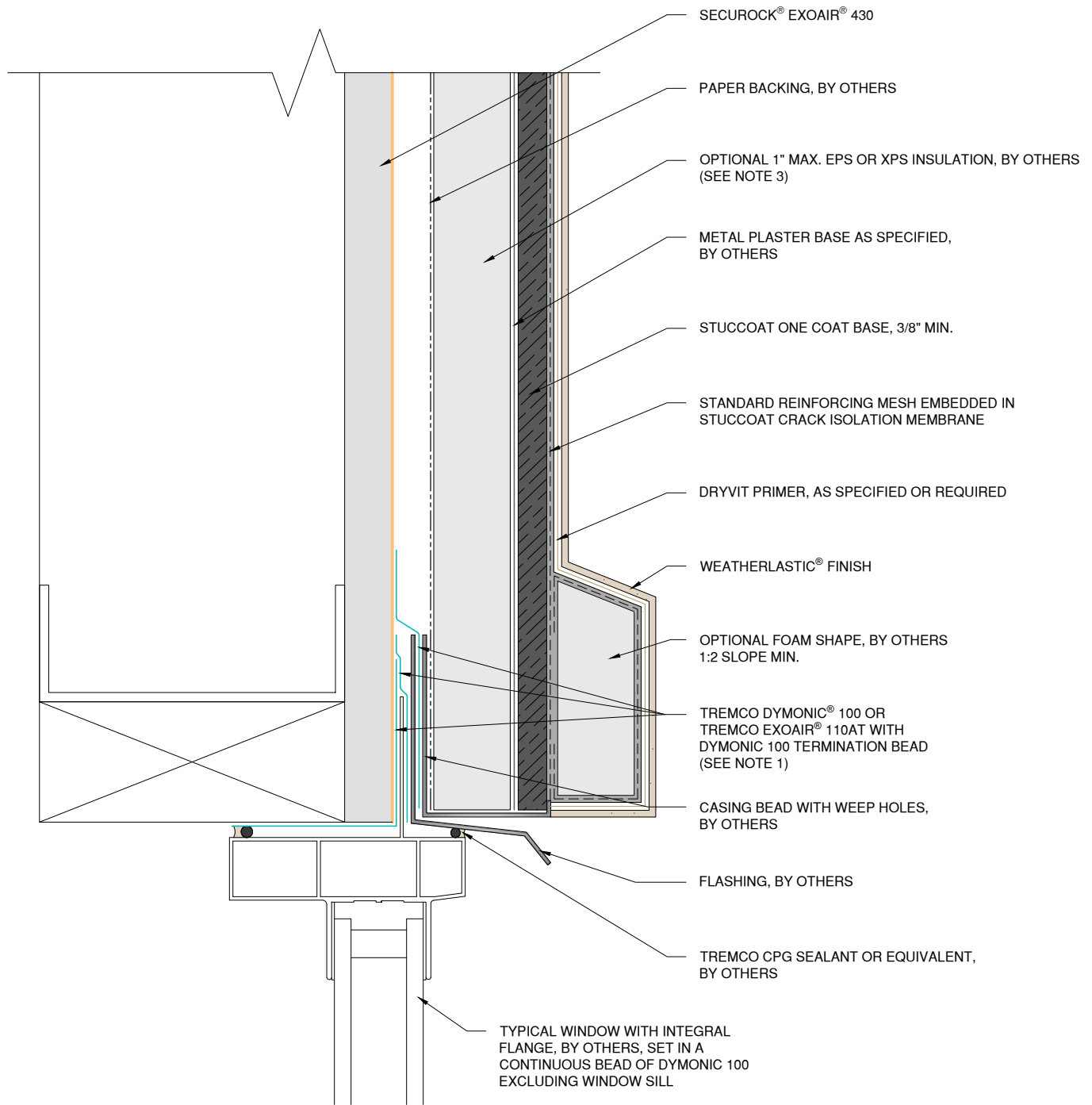
StucCoat One Coat® Securock® ExoAir 430 System



Detail: Opening Flashing Integration - Tremco ExoAir 110AT Option			
Drawn by: KAB	Checked by: BD/CB	Scale: NTS	Date: 4/2023
www.tremcocpg.com			

File Name: SCOC CI SE430 6





NOTE:

1. REFER TO PRODUCT DATA SHEETS FOR SPECIFIC APPLICATION METHODS.

2. WALL ASSEMBLY SHALL PROVIDE FOR A MAXIMUM DESIGN DEFLECTION OF L/360.

3. OPTIONAL CONTINUOUS INSULATION BOARD SHALL HAVE MINIMUM 1/4" WIDE x 1/8" DEEP GROOVES SPACED 12" ON CENTER. GROOVES SHALL BE ORIENTATED VERTICALLY WHEN INSTALLED. JOINTS SHALL BE 1/8" OR LESS AND CLOSED ON THE EXTERIOR SIDE USING MINIMUM 2 3/8" WIDE FIBERGLASS MESH TAPE.

The architecture, engineering, and design of the project using the Tremco CPG Inc. and USG products are the responsibility of the project's design professional. All products and systems must comply with local building codes and standards. This detail is for general information and guidance only and Tremco CPG Inc. and USG specifically disclaims any liability for the use of this detail. The project design professional determines, in its sole discretion, whether this detail or a functionally equivalent detail is best suited for the project. This detail is subject to change without notice. Contact Tremco CPG Inc. to ensure you have the most recent version.



Dryvit Technical Support: 800-556-7752

StucCoat One Coat® Securock® ExoAir 430 System



Technical Support: 866-209-2404

Detail: Flanged Window Head

Drawn by: KAB

Checked by: BD/CB

Scale: NTS

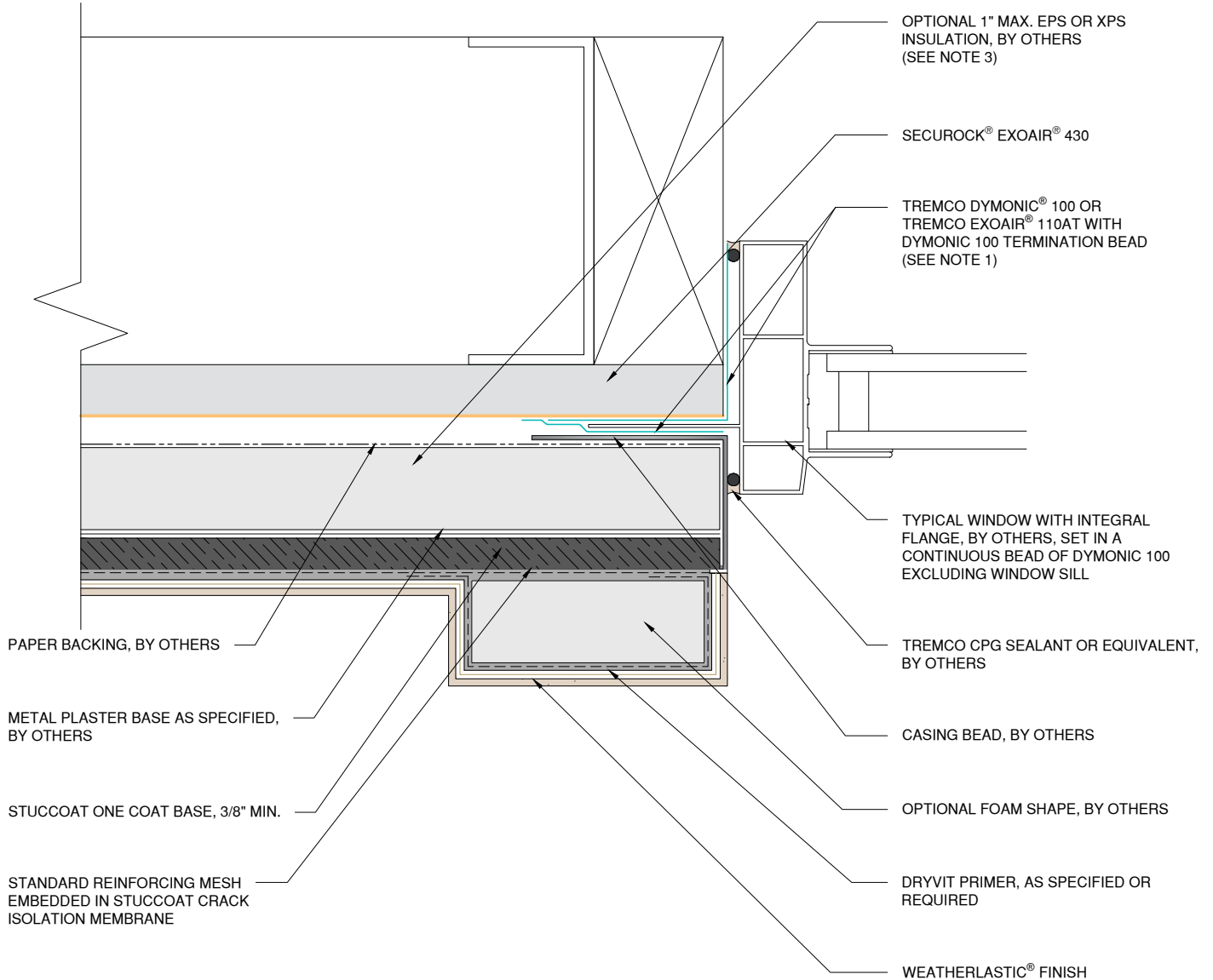
Date: 4/2023

File Name:

SCOC CI SE430 7



www.tremcocpg.com



- NOTE:
1. REFER TO PRODUCT DATA SHEETS FOR SPECIFIC APPLICATION METHODS.
 2. WALL ASSEMBLY SHALL PROVIDE FOR A MAXIMUM DESIGN DEFLECTION OF L/360.
 3. OPTIONAL CONTINUOUS INSULATION BOARD SHALL HAVE MINIMUM 1/4" WIDE x 1/8" DEEP GROOVES SPACED 12" ON CENTER. GROOVES SHALL BE ORIENTATED VERTICALLY WHEN INSTALLED. JOINTS SHALL BE 1/8" OR LESS AND CLOSED ON THE EXTERIOR SIDE USING MINIMUM 2 3/8" WIDE FIBERGLASS MESH TAPE.

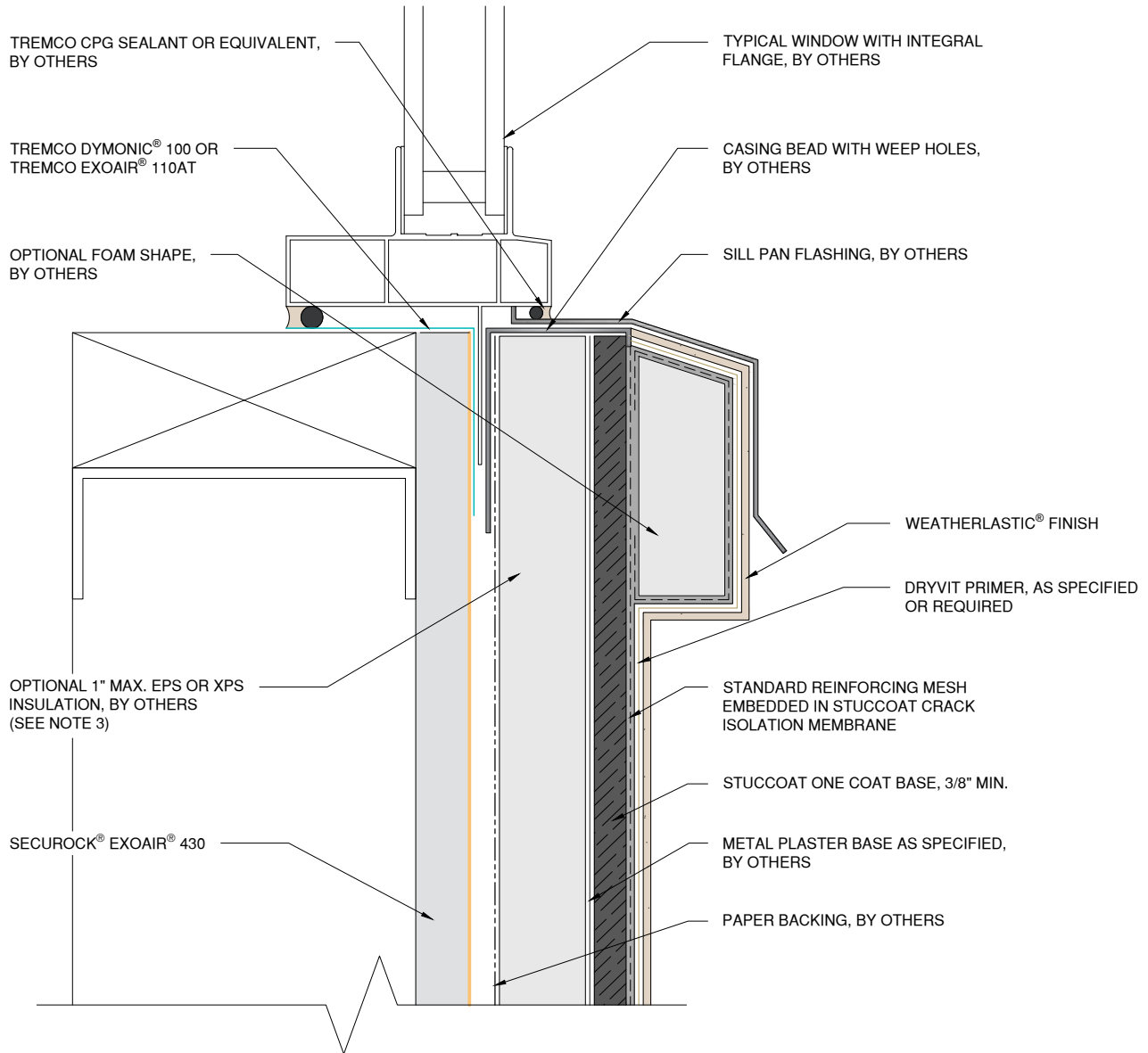
The architecture, engineering, and design of the project using the Tremco CPG Inc. and USG products are the responsibility of the project's design professional. All products and systems must comply with local building codes and standards. This detail is for general information and guidance only and Tremco CPG Inc. and USG specifically disclaims any liability for the use of this detail. The project design professional determines, in its sole discretion, whether this detail or a functionally equivalent detail is best suited for the project. This detail is subject to change without notice. Contact Tremco CPG Inc. to ensure you have the most recent version.



Dryvit Technical Support: 800-556-7752

StucCoat One Coat® Securock® ExoAir 430 System

<p>USG TREMCO SECUROCK® EXOAIR® 430</p> <p>Technical Support: 866-209-2404</p>	Detail: Flanged Window Jamb			File Name:		<p>TREMCO Construction Products Group</p>
	Drawn by: KAB	Checked by: BD/CB	Scale: NTS	Date: 4/2023	SCOC CI SE430 8	
www.tremcocpg.com						



NOTE:

1. REFER TO PRODUCT DATA SHEETS FOR SPECIFIC APPLICATION METHODS.
2. WALL ASSEMBLY SHALL PROVIDE FOR A MAXIMUM DESIGN DEFLECTION OF L/360.
3. OPTIONAL CONTINUOUS INSULATION BOARD SHALL HAVE MINIMUM 1/4" WIDE x 1/8" DEEP GROOVES SPACED 12" ON CENTER. GROOVES SHALL BE ORIENTATED VERTICALLY WHEN INSTALLED. JOINTS SHALL BE 1/8" OR LESS AND CLOSED ON THE EXTERIOR SIDE USING MINIMUM 2 3/8" WIDE FIBERGLASS MESH TAPE.

The architecture, engineering, and design of the project using the Tremco CPG Inc. and USG products are the responsibility of the project's design professional. All products and systems must comply with local building codes and standards. This detail is for general information and guidance only and Tremco CPG Inc. and USG specifically disclaims any liability for the use of this detail. The project design professional determines, in its sole discretion, whether this detail or a functionally equivalent detail is best suited for the project. This detail is subject to change without notice. Contact Tremco CPG Inc. to ensure you have the most recent version.



Dryvit Technical Support: 800-556-7752

StucCoat One Coat® Securock® ExoAir 430 System

<p>SECUROCK® EXOAIR® 430</p> <p>Technical Support: 866-209-2404</p>	Detail: Flanged Window Sill			File Name:	<p>Construction Products Group</p>
	Drawn by: KAB	Checked by: BD/CB	Scale: NTS	Date: 4/2023	
www.tremcocpg.com					

OUTSIDE CORNER WITH CORNER BEAD

SECUROCK® EXOAIR® 430

PAPER BACKING, BY OTHERS

OPTIONAL 1" MAX. EPS OR XPS INSULATION, BY OTHERS (SEE NOTE 3)

METAL PLASTER BASE AS SPECIFIED, BY OTHERS

STUCCOAT ONE COAT BASE, 3/8" MIN.

STANDARD REINFORCING MESH EMBEDDED IN STUCCOAT CRACK ISOLATION MEMBRANE

DRYVIT PRIMER, AS SPECIFIED OR REQUIRED

WEATHERLASTIC® FINISH

TREMCO DYMONIC® 100 OR TREMCO EXOAIR® 110AT (SEE NOTE 1)

CORNER BEAD, BY OTHERS

TREMCO DYMONIC® 100 OR TREMCO EXOAIR® 110AT (SEE NOTE 1)

SECUROCK® EXOAIR® 430

OPTIONAL 1" MAX. EPS OR XPS INSULATION, BY OTHERS (SEE NOTE 3)

PAPER BACKING, BY OTHERS

METAL PLASTER BASE AS SPECIFIED, BY OTHERS

STUCCOAT ONE COAT BASE, 3/8" MIN.

STANDARD REINFORCING MESH EMBEDDED IN STUCCOAT CRACK ISOLATION MEMBRANE

DRYVIT PRIMER, AS SPECIFIED OR REQUIRED

WEATHERLASTIC® FINISH

TYPICAL OUTSIDE CORNER WITHOUT CORNER BEAD

NOTE:

1. REFER TO PRODUCT DATA SHEETS FOR SPECIFIC APPLICATION METHODS.

2. WALL ASSEMBLY SHALL PROVIDE FOR A MAXIMUM DESIGN DEFLECTION OF L/360.

3. OPTIONAL CONTINUOUS INSULATION BOARD SHALL HAVE MINIMUM 1/4" WIDE x 1/8" DEEP GROOVES SPACED 12" ON CENTER. GROOVES SHALL BE ORIENTATED VERTICALLY WHEN INSTALLED. JOINTS SHALL BE 1/8" OR LESS AND CLOSED ON THE EXTERIOR SIDE USING MINIMUM 2 3/8" WIDE FIBERGLASS MESH TAPE.

The architecture, engineering, and design of the project using the Tremco CPG Inc. and USG products are the responsibility of the project's design professional. All products and systems must comply with local building codes and standards. This detail is for general information and guidance only and Tremco CPG Inc. and USG specifically disclaims any liability for the use of this detail. The project design professional determines, in its sole discretion, whether this detail or a functionally equivalent detail is best suited for the project. This detail is subject to change without notice. Contact Tremco CPG Inc. to ensure you have the most recent version.



Dryvit Technical Support: 800-556-7752

StucCoat One Coat® Securock® ExoAir 430 System



Technical Support: 866-209-2404

Detail: Outside Corner

Drawn by: KAB

Checked by: BD/CB

Scale: NTS

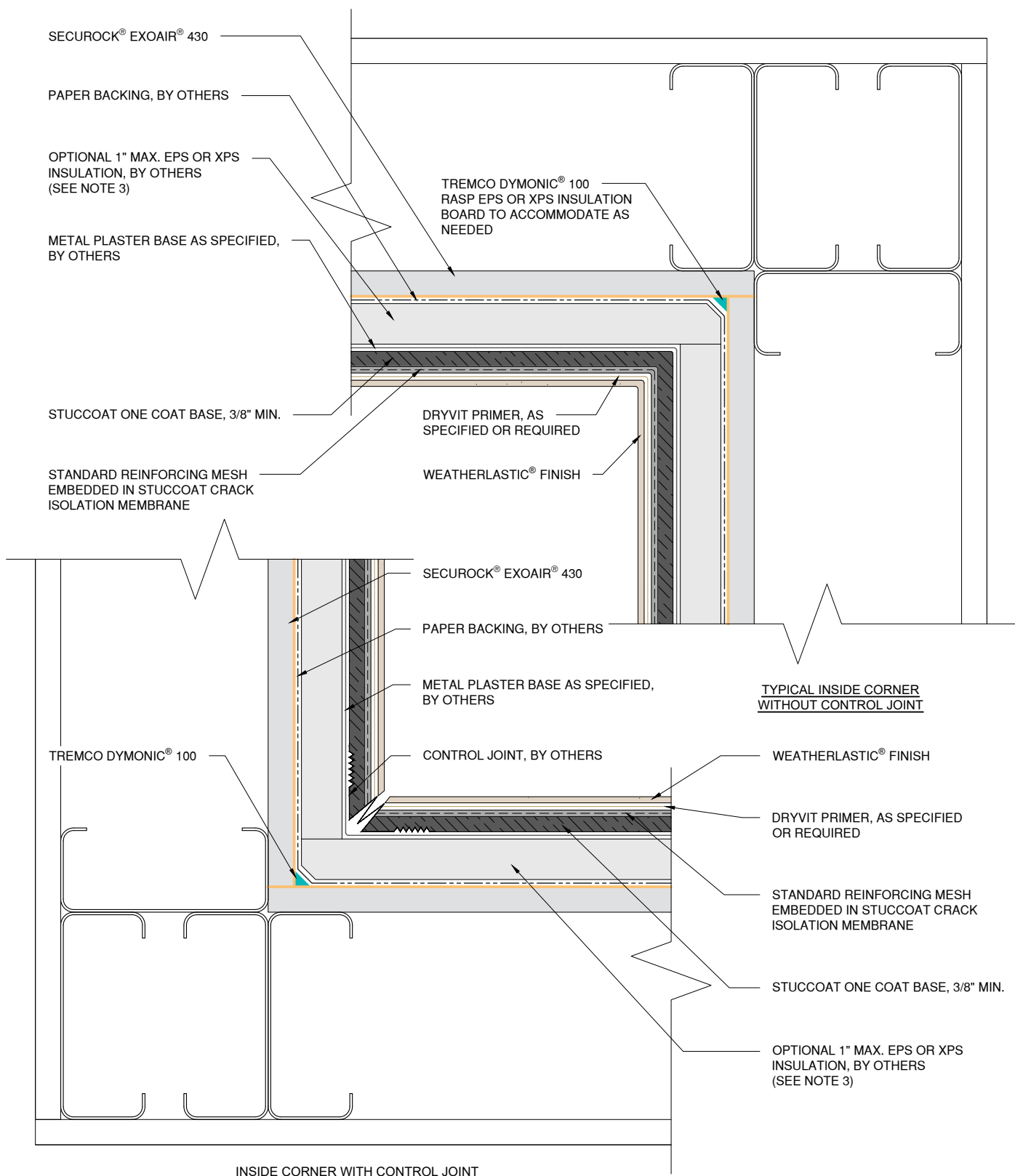
Date: 4/2023

File Name:

SCOC CI SE430 10



www.tremcocpg.com



NOTE:

- 1. REFER TO PRODUCT DATA SHEETS FOR SPECIFIC APPLICATION METHODS.
- 2. WALL ASSEMBLY SHALL PROVIDE FOR A MAXIMUM DESIGN DEFLECTION OF L/360.

- 3. OPTIONAL CONTINUOUS INSULATION BOARD SHALL HAVE MINIMUM 1/4" WIDE x 1/8" DEEP GROOVES SPACED 12" ON CENTER. GROOVES SHALL BE ORIENTATED VERTICALLY WHEN INSTALLED. JOINTS SHALL BE 1/8" OR LESS AND CLOSED ON THE EXTERIOR SIDE USING MINIMUM 2 3/8" WIDE FIBERGLASS MESH TAPE.

The architecture, engineering, and design of the project using the Tremco CPG Inc. and USG products are the responsibility of the project's design professional. All products and systems must comply with local building codes and standards. This detail is for general information and guidance only and Tremco CPG Inc. and USG specifically disclaims any liability for the use of this detail. The project design professional determines, in its sole discretion, whether this detail or a functionally equivalent detail is best suited for the project. This detail is subject to change without notice. Contact Tremco CPG Inc. to ensure you have the most recent version.



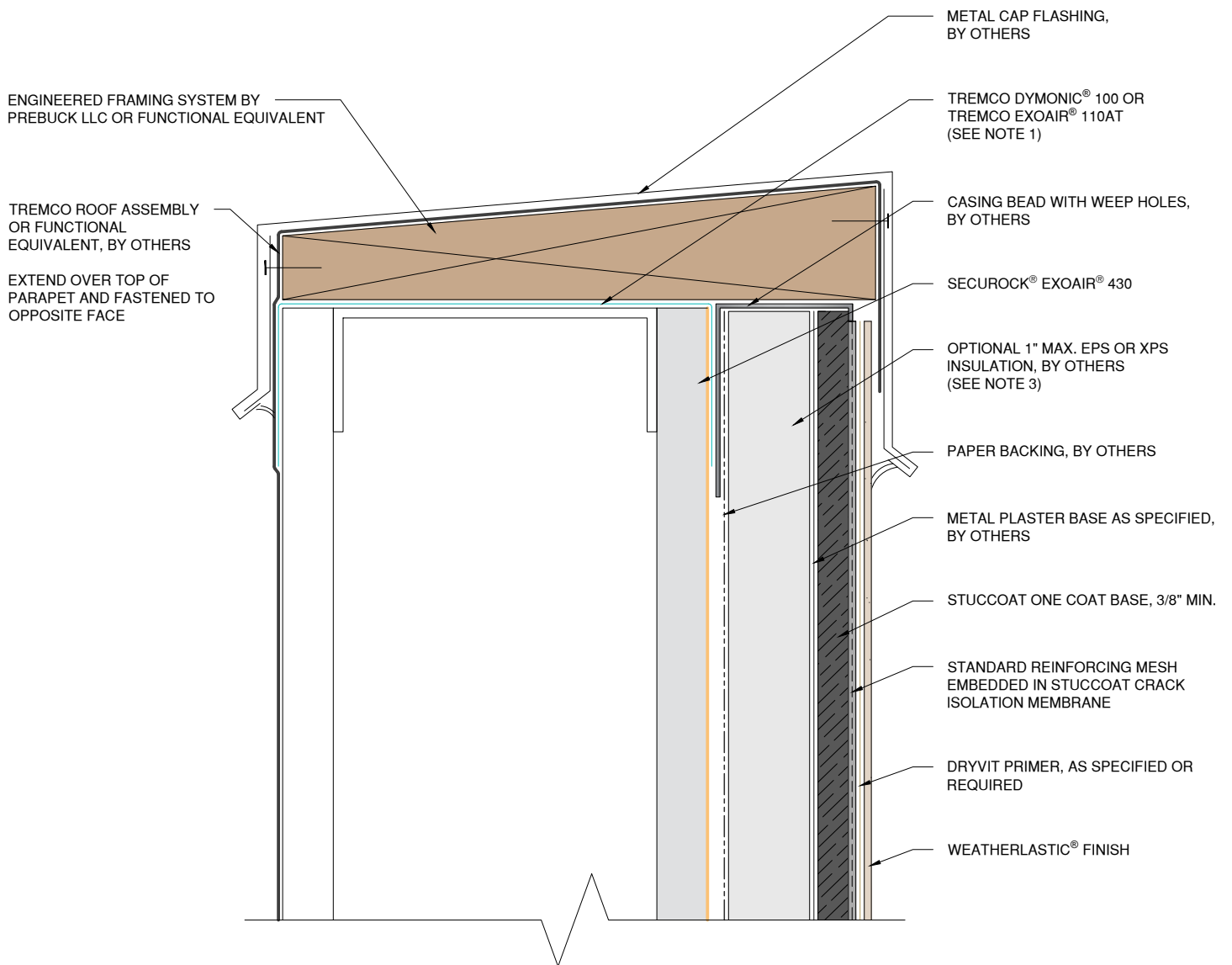
Dryvit Technical Support: 800-556-7752

StucCoat One Coat® Securock® ExoAir 430 System

USG | **TREMCO**
SECUROCK® EXOAIR® 430
 Technical Support: 866-209-2404

Detail: Inside Corner				File Name:	
Drawn by: KAB	Checked by: BD/CB	Scale: NTS	Date: 4/2023	SCOC CI SE430 11	
www.tremcocpg.com					

TREMCO
 Construction Products Group



NOTE:

1. REFER TO PRODUCT DATA SHEETS FOR SPECIFIC APPLICATION METHODS.

2. WALL ASSEMBLY SHALL PROVIDE FOR A MAXIMUM DESIGN DEFLECTION OF L/360.

3. OPTIONAL CONTINUOUS INSULATION BOARD SHALL HAVE MINIMUM 1/4" WIDE x 1/8" DEEP GROOVES SPACED 12" ON CENTER. GROOVES SHALL BE ORIENTATED VERTICALLY WHEN INSTALLED. JOINTS SHALL BE 1/8" OR LESS AND CLOSED ON THE EXTERIOR SIDE USING MINIMUM 2 3/8" WIDE FIBERGLASS MESH TAPE.

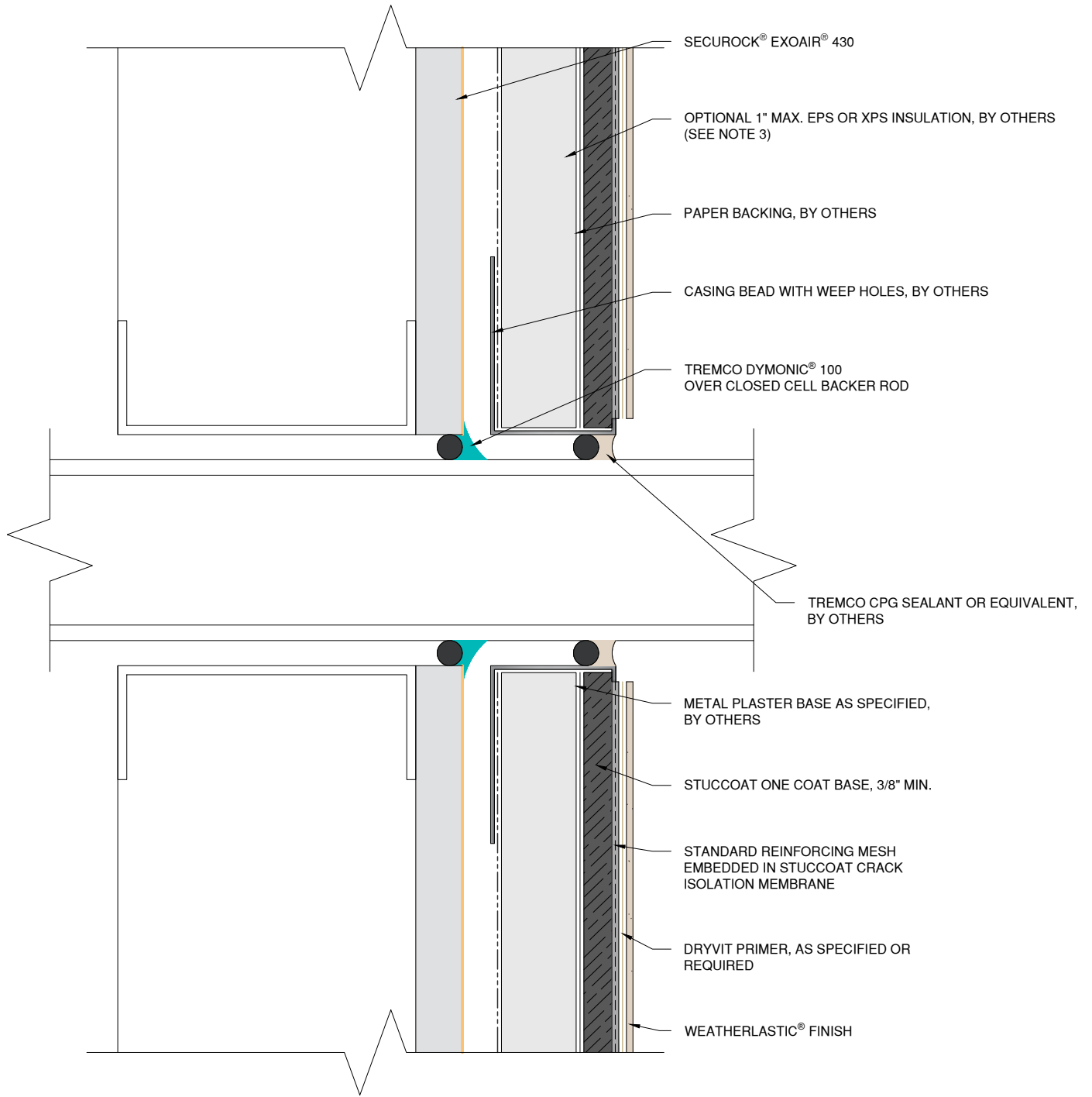
The architecture, engineering, and design of the project using the Tremco CPG Inc. and USG products are the responsibility of the project's design professional. All products and systems must comply with local building codes and standards. This detail is for general information and guidance only and Tremco CPG Inc. and USG specifically disclaims any liability for the use of this detail. The project design professional determines, in its sole discretion, whether this detail or a functionally equivalent detail is best suited for the project. This detail is subject to change without notice. Contact Tremco CPG Inc. to ensure you have the most recent version.



Dryvit Technical Support: 800-556-7752

StucCoat One Coat® Securock® ExoAir 430 System

<p>SECUROCK® EXOAIR® 430</p> <p>Technical Support: 866-209-2404</p>	Detail: Termination at Parapet - Cap Flashing			File Name:	<p>Construction Products Group</p>
	Drawn by: KAB	Checked by: BD/CB	Scale: NTS	Date: 4/2023	
www.tremcocpg.com					



NOTE:

1. REFER TO PRODUCT DATA SHEETS FOR SPECIFIC APPLICATION METHODS.
2. WALL ASSEMBLY SHALL PROVIDE FOR A MAXIMUM DESIGN DEFLECTION OF L/360.
3. OPTIONAL CONTINUOUS INSULATION BOARD SHALL HAVE MINIMUM 1/4" WIDE x 1/8" DEEP GROOVES SPACED 12" ON CENTER. GROOVES SHALL BE ORIENTATED VERTICALLY WHEN INSTALLED. JOINTS SHALL BE 1/8" OR LESS AND CLOSED ON THE EXTERIOR SIDE USING MINIMUM 2 3/8" WIDE FIBERGLASS MESH TAPE.

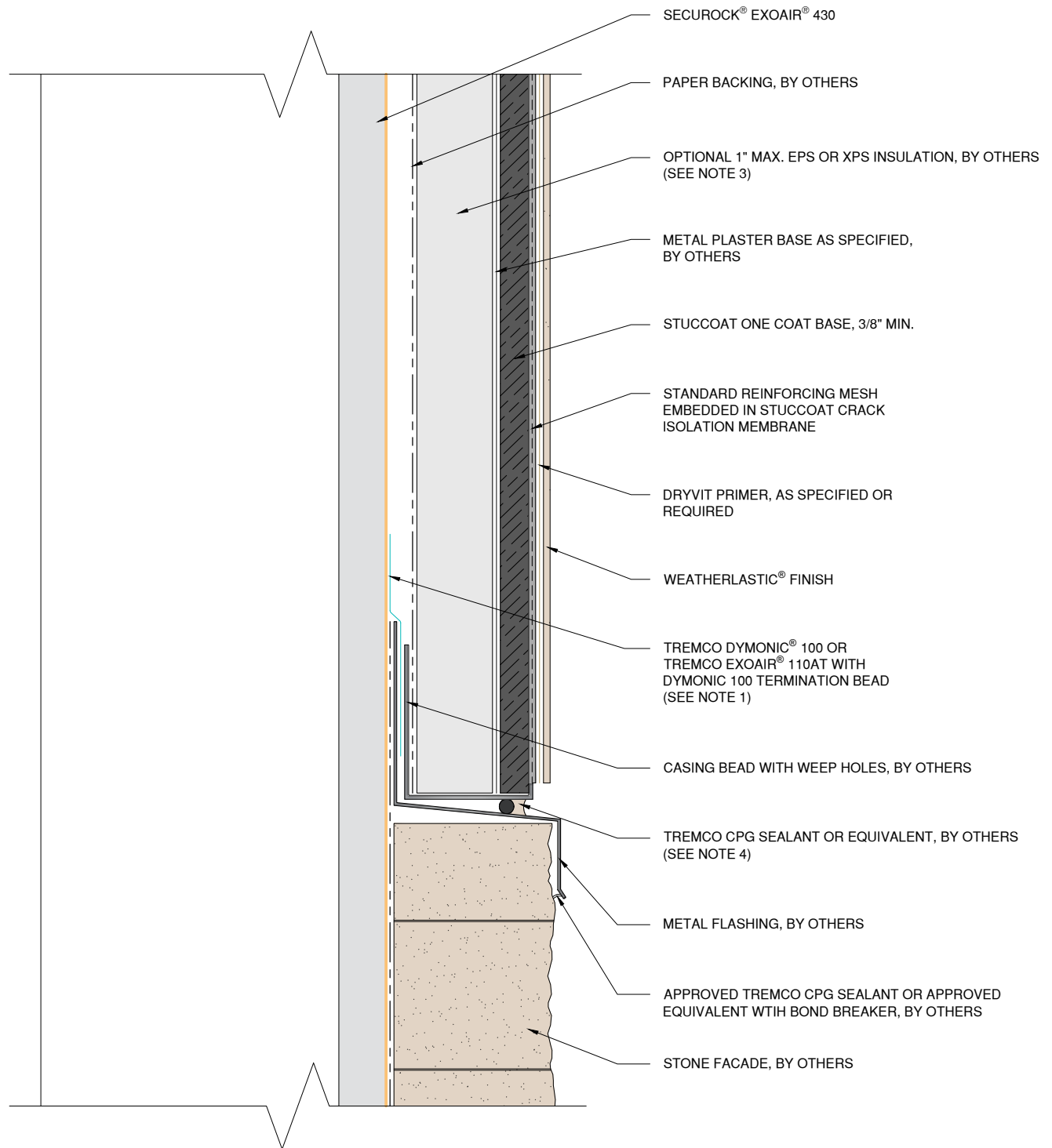
The architecture, engineering, and design of the project using the Tremco CPG Inc. and USG products are the responsibility of the project's design professional. All products and systems must comply with local building codes and standards. This detail is for general information and guidance only and Tremco CPG Inc. and USG specifically disclaims any liability for the use of this detail. The project design professional determines, in its sole discretion, whether this detail or a functionally equivalent detail is best suited for the project. This detail is subject to change without notice. Contact Tremco CPG Inc. to ensure you have the most recent version.



Dryvit Technical Support: 800-556-7752

StucCoat One Coat® Securock® ExoAir 430 System

<p>SECUROCK® EXOAIR® 430</p> <p>Technical Support: 866-209-2404</p>	Detail: Penetration			File Name:	
	Drawn by: KAB	Checked by: BD/CB	Scale: NTS	Date: 4/2023	SCOC CI SE430 13
www.tremcocpg.com					<p>Construction Products Group</p>



NOTE:

1. REFER TO PRODUCT DATA SHEETS FOR SPECIFIC APPLICATION METHODS.

2. WALL ASSEMBLY SHALL PROVIDE FOR A MAXIMUM DESIGN DEFLECTION OF L/360.

3. OPTIONAL CONTINUOUS INSULATION BOARD SHALL HAVE MINIMUM 1/4" WIDE x 1/8" DEEP GROOVES SPACED 12" ON CENTER. GROOVES SHALL BE ORIENTATED VERTICALLY WHEN INSTALLED. JOINTS SHALL BE 1/8" OR LESS AND CLOSED ON THE EXTERIOR SIDE USING MINIMUM 2 3/8" WIDE FIBERGLASS MESH TAPE.

4. BACKER ROD AND SEALANT JOINT SHALL NOT COVER OR OBSTRUCT CASING BEAD WEEP HOLES.

The architecture, engineering, and design of the project using the Tremco CPG Inc. and USG products are the responsibility of the project's design professional. All products and systems must comply with local building codes and standards. This detail is for general information and guidance only and Tremco CPG Inc. and USG specifically disclaims any liability for the use of this detail. The project design professional determines, in its sole discretion, whether this detail or a functionally equivalent detail is best suited for the project. This detail is subject to change without notice. Contact Tremco CPG Inc. to ensure you have the most recent version.



Dryvit Technical Support: 800-556-7752

StucCoat One Coat® Securock® ExoAir 430 System



Technical Support: 866-209-2404

Detail: Horizontal Termination at Stone Veneer

Drawn by: KAB

Checked by: BD/CB

Scale: NTS

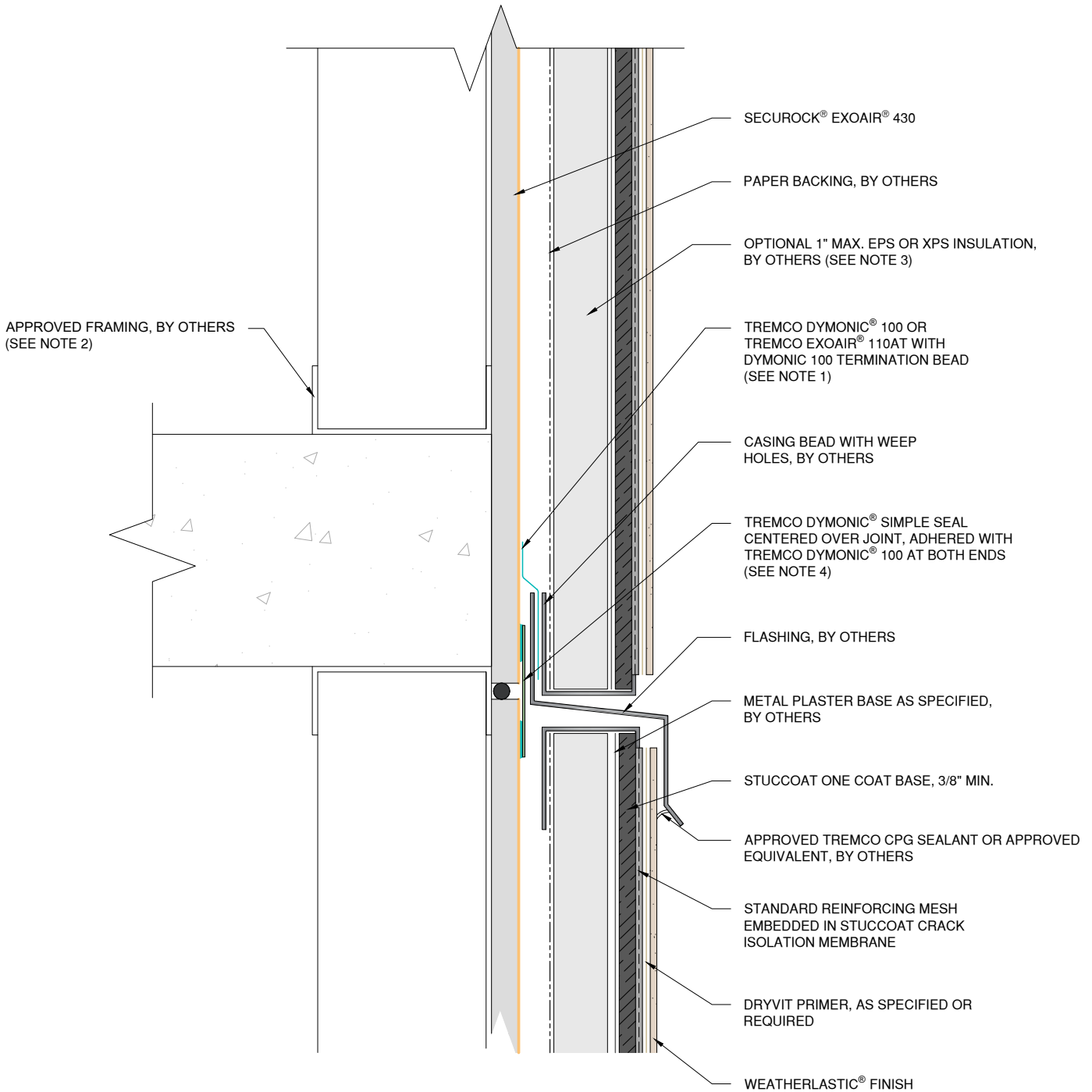
Date: 4/2023

File Name:

SCOC CI SE430 14



www.tremcocpg.com



NOTE:

1. REFER TO PRODUCT DATA SHEETS FOR SPECIFIC APPLICATION METHODS.
2. WALL ASSEMBLY SHALL PROVIDE FOR A MAXIMUM DESIGN DEFLECTION OF L/360.
3. OPTIONAL CONTINUOUS INSULATION BOARD SHALL HAVE MINIMUM 1/4" WIDE x 1/8" DEEP GROOVES SPACED 12" ON CENTER. GROOVES SHALL BE ORIENTATED VERTICALLY WHEN INSTALLED. JOINTS SHALL BE 1/8" OR LESS AND CLOSED ON THE EXTERIOR SIDE USING MINIMUM 2 3/8" WIDE FIBERGLASS MESH TAPE.
4. DYMONIC 100 MUST NOT BE LEFT EXPOSED TO U.V.

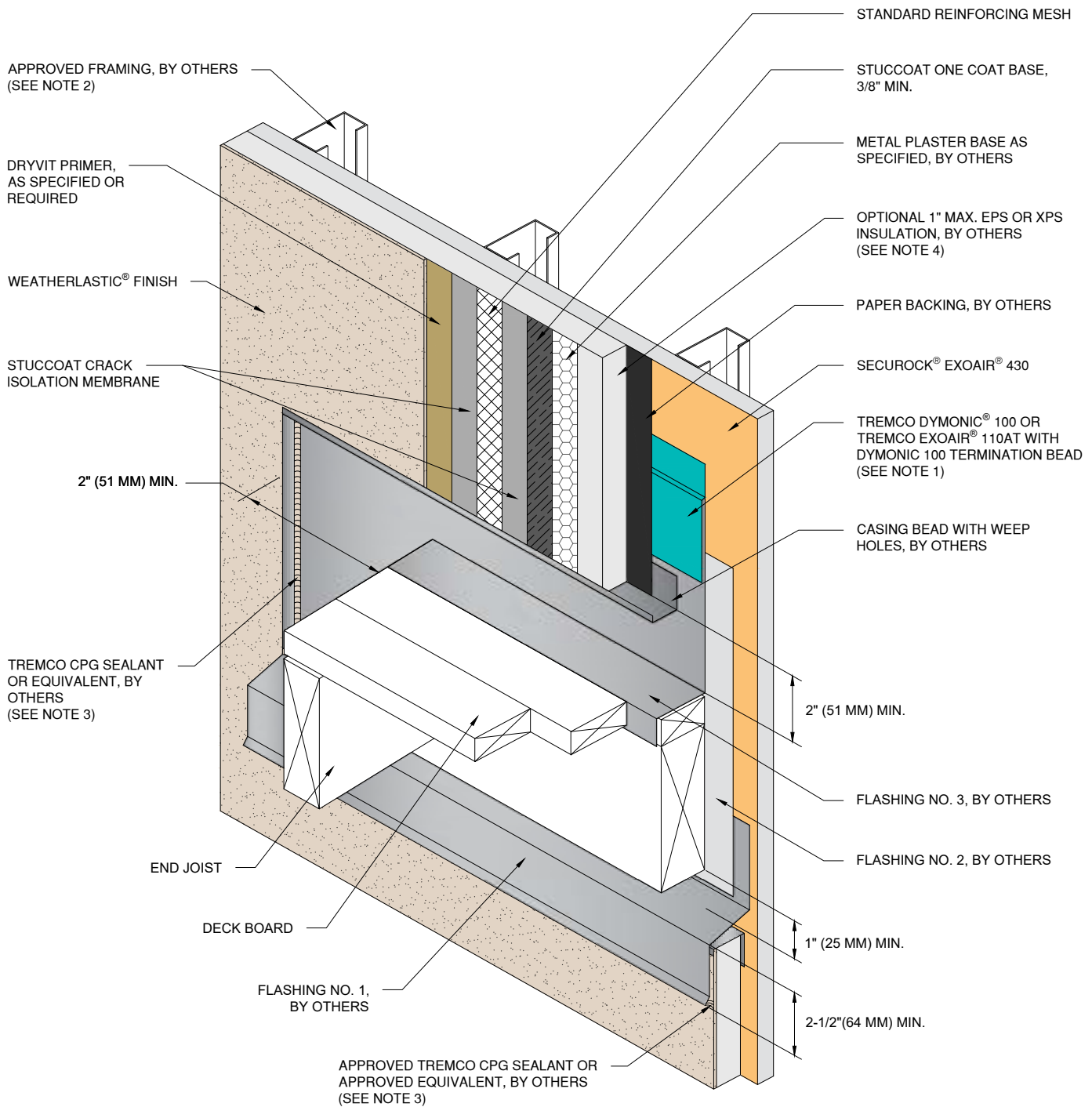
The architecture, engineering, and design of the project using the Tremco CPG Inc. and USG products are the responsibility of the project's design professional. All products and systems must comply with local building codes and standards. This detail is for general information and guidance only and Tremco CPG Inc. and USG specifically disclaims any liability for the use of this detail. The project design professional determines, in its sole discretion, whether this detail or a functionally equivalent detail is best suited for the project. This detail is subject to change without notice. Contact Tremco CPG Inc. to ensure you have the most recent version.



Dryvit Technical Support: 800-556-7752

StucCoat One Coat® Securock® ExoAir 430 System

<p>SECUROCK® EXOAIR® 430</p> <p>Technical Support: 866-209-2404</p>	Detail: Horizontal Flashing & Expansion Joint			File Name:	<p>Construction Products Group</p>
	Drawn by: KAB	Checked by: BD/CB	Scale: NTS	Date: 4/2023	
www.tremcocpg.com					



NOTE:

- 1. REFER TO PRODUCT DATA SHEETS FOR SPECIFIC APPLICATION METHODS.
- 2. WALL ASSEMBLY SHALL PROVIDE FOR A MAXIMUM DESIGN DEFLECTION OF L/360.
- 3. BACKER ROD AND SEALANT JOINT SHALL NOT COVER OR OBSTRUCT CASING BEAD WEEP HOLES.

- 4. OPTIONAL CONTINUOUS INSULATION BOARD SHALL HAVE MINIMUM 1/4" WIDE x 1/8" DEEP GROOVES SPACED 12" ON CENTER. GROOVES SHALL BE ORIENTATED VERTICALLY WHEN INSTALLED. JOINTS SHALL BE 1/8" OR LESS AND CLOSED ON THE EXTERIOR SIDE USING MINIMUM 2 3/8" WIDE FIBERGLASS MESH TAPE.

- 5. DETAIL DOES NOT APPLY TO CANTILEVERED DECKS. CANTILEVERED DECKS REQUIRE JOB SPECIFIC FLASHING DETAILS.

The architecture, engineering, and design of the project using the Tremco CPG Inc. and USG products are the responsibility of the project's design professional. All products and systems must comply with local building codes and standards. This detail is for general information and guidance only and Tremco CPG Inc. and USG specifically disclaims any liability for the use of this detail. The project design professional determines, in its sole discretion, whether this detail or a functionally equivalent detail is best suited for the project. This detail is subject to change without notice. Contact Tremco CPG Inc. to ensure you have the most recent version.



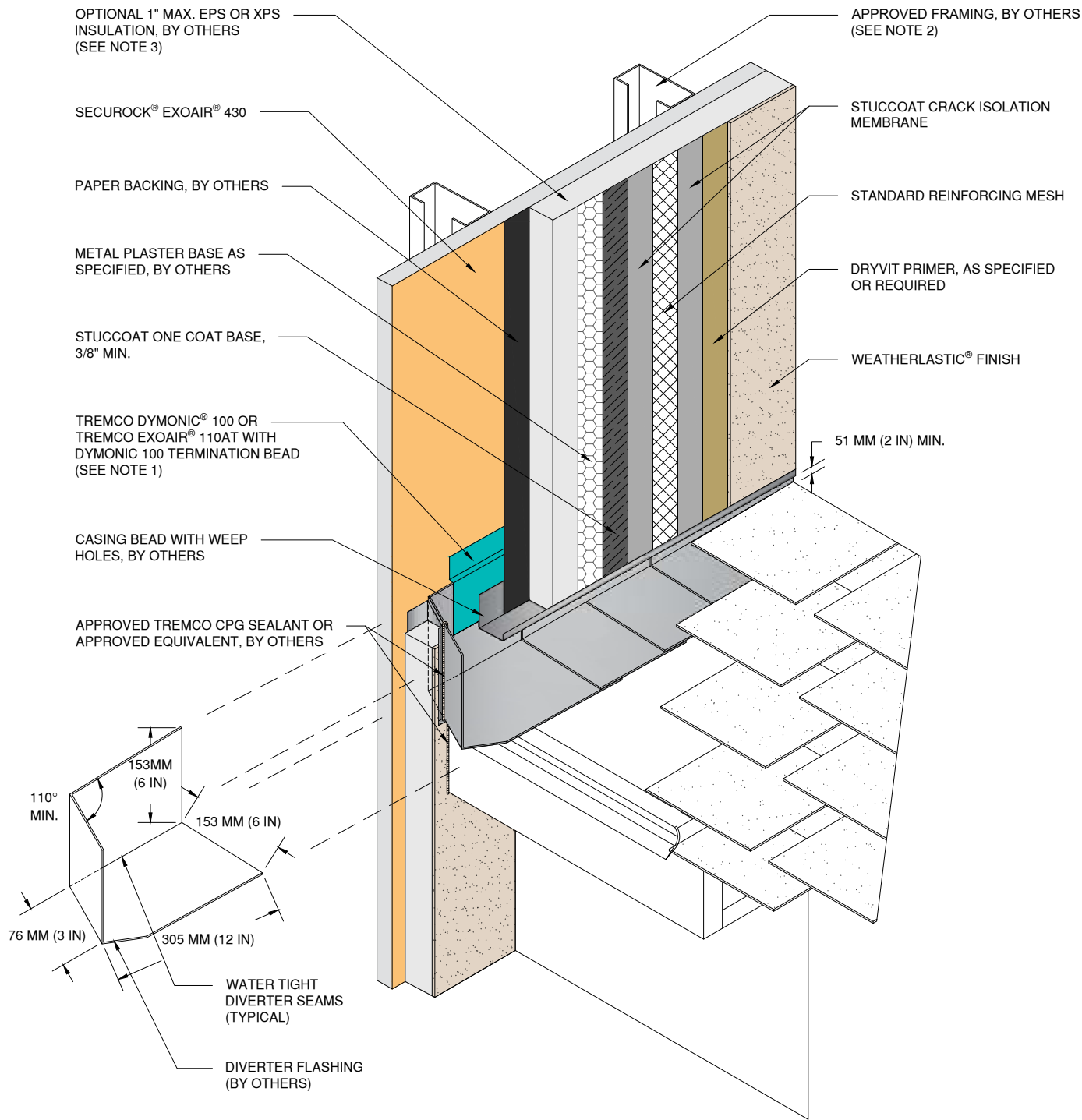
Dryvit Technical Support: 800-556-7752

StucCoat One Coat® Securock® ExoAir 430 System

USG | **TREMCO**
SECUROCK® EXOAIR® 430
 Technical Support: 866-209-2404

Detail: Termination at Wood Framed Deck				File Name:
Drawn by: KAB	Checked by: BD/CB	Scale: NTS	Date: 4/2023	SCOC CI SE430 16
www.tremcocpg.com				

TREMCO
 Construction Products Group



NOTE:
 1. REFER TO PRODUCT DATA SHEETS FOR SPECIFIC APPLICATION METHODS.
 2. WALL ASSEMBLY SHALL PROVIDE FOR A MAXIMUM DESIGN DEFLECTION OF L/360.

3. OPTIONAL CONTINUOUS INSULATION BOARD SHALL HAVE MINIMUM 1/4" WIDE x 1/8" DEEP GROOVES SPACED 12" ON CENTER. GROOVES SHALL BE ORIENTATED VERTICALLY WHEN INSTALLED. JOINTS SHALL BE 1/8" OR LESS AND CLOSED ON THE EXTERIOR SIDE USING MINIMUM 2 3/8" WIDE FIBERGLASS MESH TAPE.

The architecture, engineering, and design of the project using the Tremco CPG Inc. and USG products are the responsibility of the project's design professional. All products and systems must comply with local building codes and standards. This detail is for general information and guidance only and Tremco CPG Inc. and USG specifically disclaims any liability for the use of this detail. The project design professional determines, in its sole discretion, whether this detail or a functionally equivalent detail is best suited for the project. This detail is subject to change without notice. Contact Tremco CPG Inc. to ensure you have the most recent version.



StucCoat One Coat® Securock® ExoAir 430 System

USG | **TREMCO**
SECUROCK® EXOAIR® 430
 Technical Support: 866-209-2404

Detail: Termination at Roof/Wall Intersection				File Name:
Drawn by: KAB	Checked by: BD/CB	Scale: NTS	Date: 4/2023	SCOC CI SE430 17
www.tremcocpg.com				

