

ENGINEERED FRAMING SYSTEM BY PREBUCK LLC OR FUNCTIONAL EQUIVALENT

TREMCO ROOF ASSEMBLY OR FUNCTIONAL EQUIVALENT, BY OTHERS

EXTEND OVER TOP OF PARAPET AND FASTENED TO OPPOSITE FACE

METAL CAP FLASHING, BY OTHERS

TREMCO EXOAIR® 110AT OR TREMCO DYMONIC® 100 (SEE NOTE 1)

CASING BEAD WITH WEEP HOLES, BY OTHERS

SECUROCK® EXOAIR® 430

PAPER BACKING, BY OTHERS

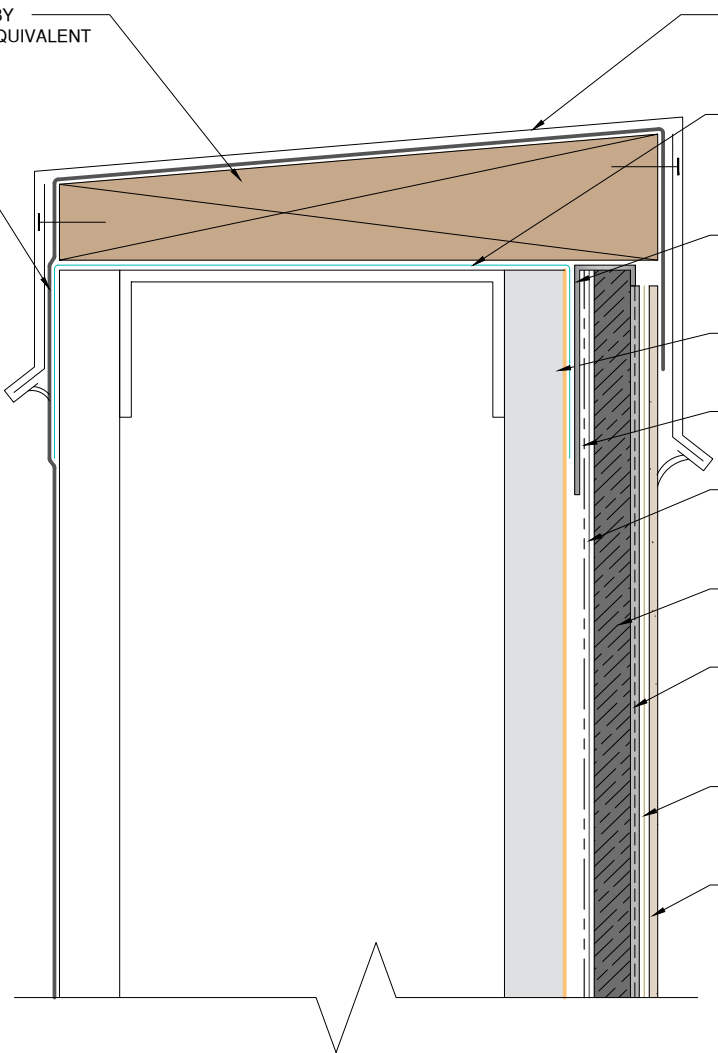
METAL PLASTER BASE AS SPECIFIED, BY OTHERS

STUCCOAT ONE COAT BASE, 3/8" MIN.

STANDARD REINFORCING MESH EMBEDDED IN STUCCOAT CRACK ISOLATION MEMBRANE

DRYVIT PRIMER, AS SPECIFIED OR REQUIRED

WEATHERLASTIC® FINISH



NOTE:

1. REFER TO PRODUCT DATA SHEETS FOR SPECIFIC APPLICATION METHODS.

2. WALL ASSEMBLY SHALL PROVIDE FOR A MAXIMUM DESIGN DEFLECTION OF L/360.

The architecture, engineering, and design of the project using the Dryvit, Tremco and USG products are the responsibility of the project's design professional. All products and systems must comply with local building codes and standards. This detail is for general information and guidance only and Dryvit, Tremco and USG specifically disclaims any liability for the use of this detail. The project design professional determines, in its sole discretion, whether this detail or a functionally equivalent detail is best suited for the project. This detail is subject to change without notice. Contact Dryvit, Tremco and USG to ensure you have the most recent version.



Dryvit Technical Support: 800-556-7752

StucCoat One Coat® Securock® ExoAir 430 System



Detail: Termination at Parapet - Cap Flashing

File Name:

Drawn by: KAB

Checked by: BD/CB

Scale: NTS

Date: 4/2023

SCOC SE430 12



Technical Support: 866-209-2404

www.tremcocpg.com