

Outsulation® MD System

An Exterior Wall Insulation and Finish System with Moisture Drainage

DSC167

Outsulation® MD (NC) System Installation Details

Table of Contents

Detail

OMD.01	DRAINAGE OPTIONS 1 & 2
OMD.02	BOARD PROFILE & ADHESIVE PATTERN
OMD.03	OUTSIDE CORNER - EPS BOARD LAYOUT DRAINAGE OPTIONS 1 & 2
OMD.04	BUILDING FACADE - AQUADUCT PLACEMENT DRAINAGE OPTION 3
OMD.05	OUTSIDE CORNER - EPS BOARD LAYOUT- DRAINAGE OPTION 3
OMD.06	TERMINATION AT GRADE LEVEL
OMD.07	TERMINATION AT CONCRETE
OMD.08	PROTECTION OF ROUGH OPENINGS
OMD.09	WINDOW HEAD / SILL
OMD.10	WINDOW JAMB
OMD.11	PARAPET - CAP FLASHING
OMD.12	SOFFIT / FASCIA INTERSECTION
OMD.13	INSIDE / OUTSIDE CORNERS
OMD.14	OUTSIDE CORNER - HIGH IMPACT
OMD.15	HORIZONTAL EXPANSION JOINT - DRAINAGE OPTIONS 1 & 2
OMD.16	HORIZONTAL EXPANSION JOINT - DRAINAGE OPTIONS 1 & 2
OMD.17	HORIZONTAL EXPANSION JOINT - DRAINAGE OPTION 3
OMD.18	HORIZONTAL EXPANSION JOINT - DRAINAGE OPTION 3
OMD.19	TWO-STAGE SEALANT JOINTS
OMD.20	STRUCTURAL EXPANSION JOINTS
OMD.21	PENETRATIONS - CROSS SECTION
OMD.22	INSULATION LAYOUT - OPENINGS
OMD.23	SIGN ATTACHMENT
OMD.24	AESTHETIC REVEALS
OMD.25	PROJECTING SHAPES
OMD.26	RECESSED REVEALS

NOTE:
TREMCO CPG INC. MAKES NO REPRESENTATION REGARDING CONFORMITY OF ITS SUGGESTIONS TO MODEL BUILDING CODES, ENGINEERING CRITERIA, SPECIFIC APPLICATIONS, OR PROJECT LOCATIONS. ALL COMPONENTS INDICATED IN ILLUSTRATIONS, AS WELL AS OTHERS THAT MAY BE REQUIRED FOR THE INTEGRITY OF THE SYSTEM SHALL BE DESIGNED, DETAILED, AND ENGINEERED BY REPRESENTATIVES OF THE ARCHITECT, OWNER, OR CONTRACTOR TO BE IN CONFORMANCE WITH MODEL CODES, ARCHITECTURAL, AND ENGINEERING REQUIREMENTS PERTAINING TO SPECIFIC BUILDING PROJECTS.

TREMCO MAKES NO WARRANTY, EXPRESSED OR IMPLIED, AS TO THE ARCHITECTURAL DESIGN, ENGINEERING, OR WORKMANSHIP OF PROJECTS UTILIZING TREMCO SYSTEMS OR PRODUCTS.

THE LIABILITIES OF TREMCO SHALL BE AS STATED IN THE TREMCO STANDARD WARRANTY. CONTACT TREMCO FOR A FULL AND COMPLETE COPY OF THE WARRANTY.

This detail is for general informational purposes, only. The project design professional determines, in its sole discretion, whether this detail or a functionally equivalent detail is best suited for the project with respect to any architecture, engineering, and design requirements, including any local building code requirements. If this document is not reviewed and the product is not approved for use by a licensed design professional, the customer agrees that the detail may contain substantive flaws requiring correction, and hereby releases Tremco CPG Inc. from any and all liability related to the design and installation of the product. This detail is subject to change without notice. Contact Tremco to ensure you have the most recent version.

Outsulation® MD (NC)

Detail: Table of Contents

File Name:

Drawn by:

Checked by: AS

Scale: NTS

TOC

Revision #: 06

Revised by: KAB

Date: 8/14/2024

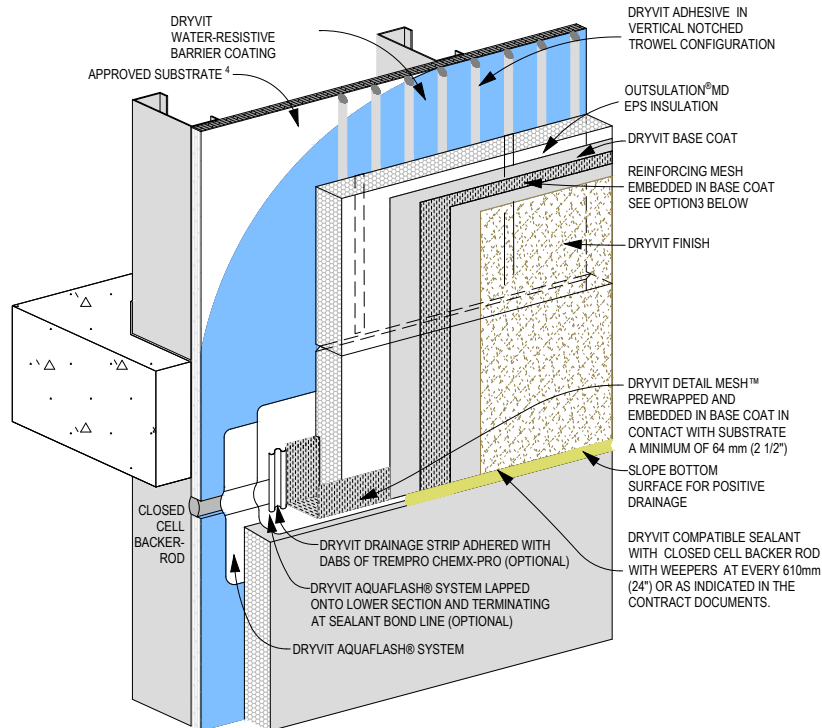


Dryvit Technical Support: 800-556-7752

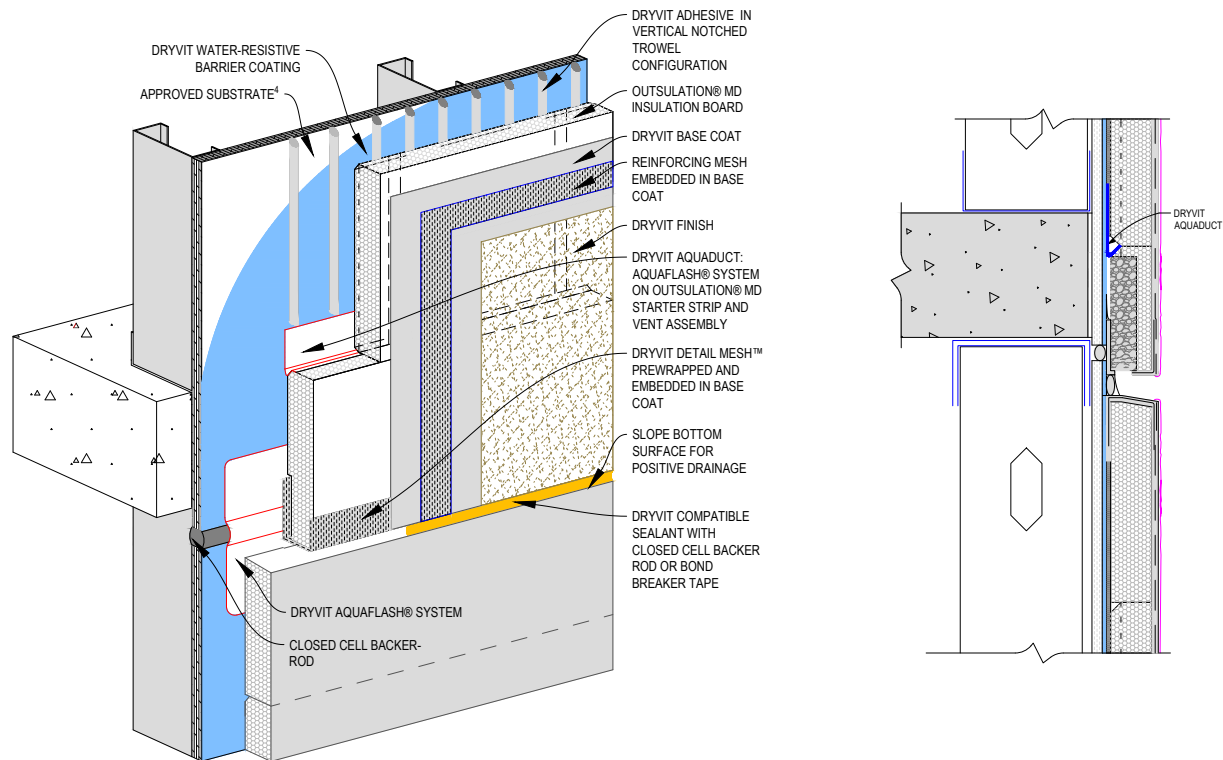


Construction Products Group

www.tremcocpg.com



OPTION 1 - PRE-WRAPPED WITH OPTIONAL DRAINAGE STRIP



OPTION 2 - VENT ASSEMBLY & AQUADUCT

NOTES:

1. THESE DETAILS APPLY TO BOTH OUTSULATION MD AND OUTSULATION MD (NC). OUTSULATION® MD (NC) REQUIRES THE USE OF PRIMUS® DM OR GENESIS™ DM AS THE BASE COAT/ADHESIVE.
2. DRYVIT RECOMMENDS THAT GROUND FLOOR APPLICATIONS AND ALL FACADES EXPOSED TO ABNORMAL STRESS, HIGH TRAFFIC, OR DELIBERATE IMPACT HAVE THE BASE COAT REINFORCED WITH PANZER® 15 OR 20 MESH PRIOR TO STANDARD MESH. LOCATION OF HIGH IMPACT ZONES SHOULD BE INDICATED IN CONTRACT DRAWINGS.
3. IT IS THE RESPONSIBILITY OF THE DESIGN AUTHORITY TO INDICATE WHICH OF THESE 2 DRAINAGE OPTIONS IS PREFERRED.
4. ALIGNMENT OF VERTICAL GROOVES NOT REQUIRED.

This detail is for general informational purposes only. The project design professional determines, in its sole discretion, whether this detail or a functionally equivalent detail is best suited for the project with respect to any architecture, engineering, and design requirements, including any local building code requirements. If this document is not reviewed and the product is not approved for use by a licensed design professional, the customer agrees that the detail may contain substantive flaws requiring correction, and hereby releases Tremco CPG Inc. from any and all liability related to the design and installation of the product. This detail is subject to change without notice. Contact Tremco to ensure you have the most recent version.

Outsulation® MD (NC)

Detail: Drainage Options 1 & 2

Drawn by:

Checked by: AS

Scale: NTS

Revision #: 06

Revised by: KAB

Date: 8/14/2024

File Name:

OMD.01

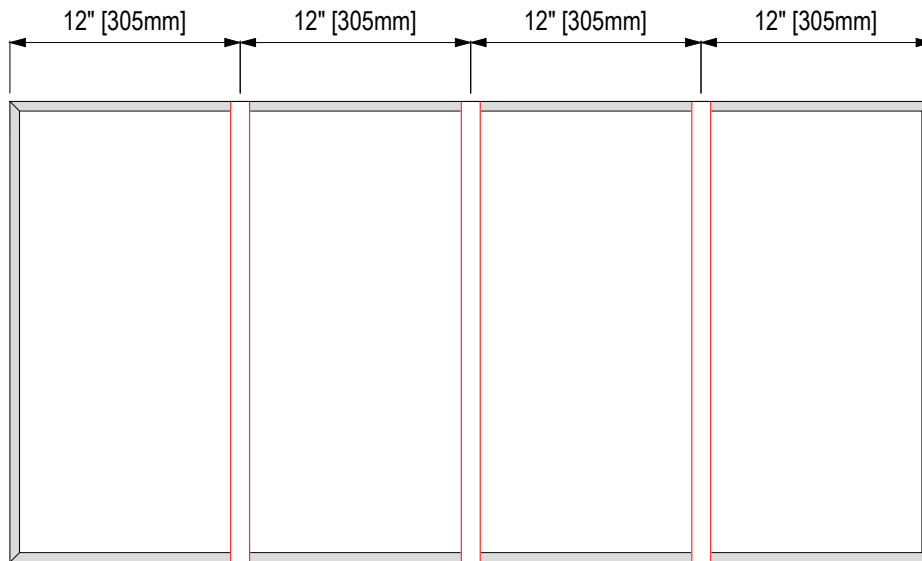


Dryvit Technical Support: 800-556-7752

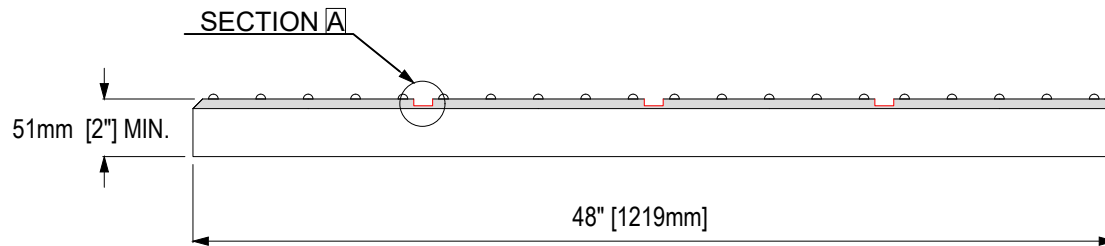
www.tremcocpg.com



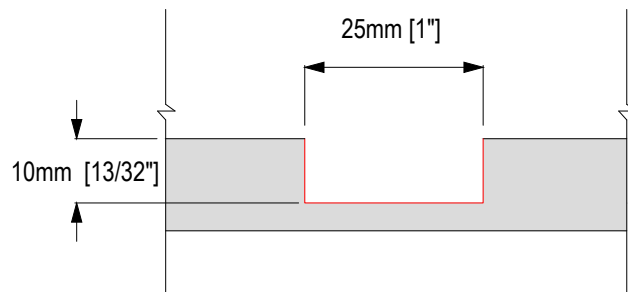
Construction Products Group



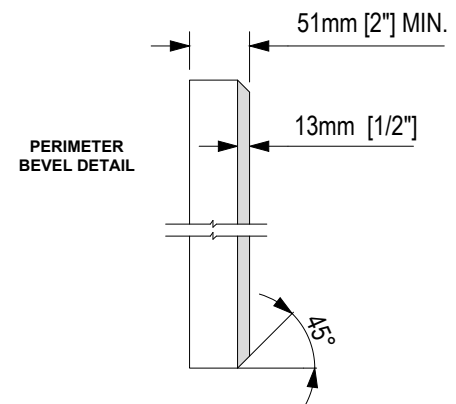
ELEVATION VIEW - WALL SIDE



PLAN VIEW WITH SAMPLE ADHESIVE DISTRIBUTION PATTERN



GROOVE A SECTION



PERIMETER
BEVEL DETAIL

NOTES:

1. NOTCHED TROWEL ADHESIVE RIBBONS MAY VARY FROM ILLUSTRATION.
2. A MINIMUM OF FOUR (4) RIBBONS PER 305mm (12") SECTION ARE REQUIRED.
3. ALIGNMENT OF VERTICAL GROOVES NOT REQUIRED.

This detail is for general informational purposes, only. The project design professional determines, in its sole discretion, whether this detail or a functionally equivalent detail is best suited for the project with respect to any architecture, engineering, and design requirements, including any local building code requirements. If this document is not reviewed and the product is not approved for use by a licensed design professional, the customer agrees that the detail may contain substantive flaws requiring correction, and hereby releases Tremco CPG Inc. from any and all liability related to the design and installation of the product. This detail is subject to change without notice. Contact Tremco to ensure you have the most recent version.

Outsulation® MD (NC)



Dryvit Technical Support: 800-556-7752

Detail: Board Profile and Adhesive Pattern

Drawn by:	Checked by: AS	Scale: NTS
Revision #: 06	Revised by: KAB	Date: 8/14/2024

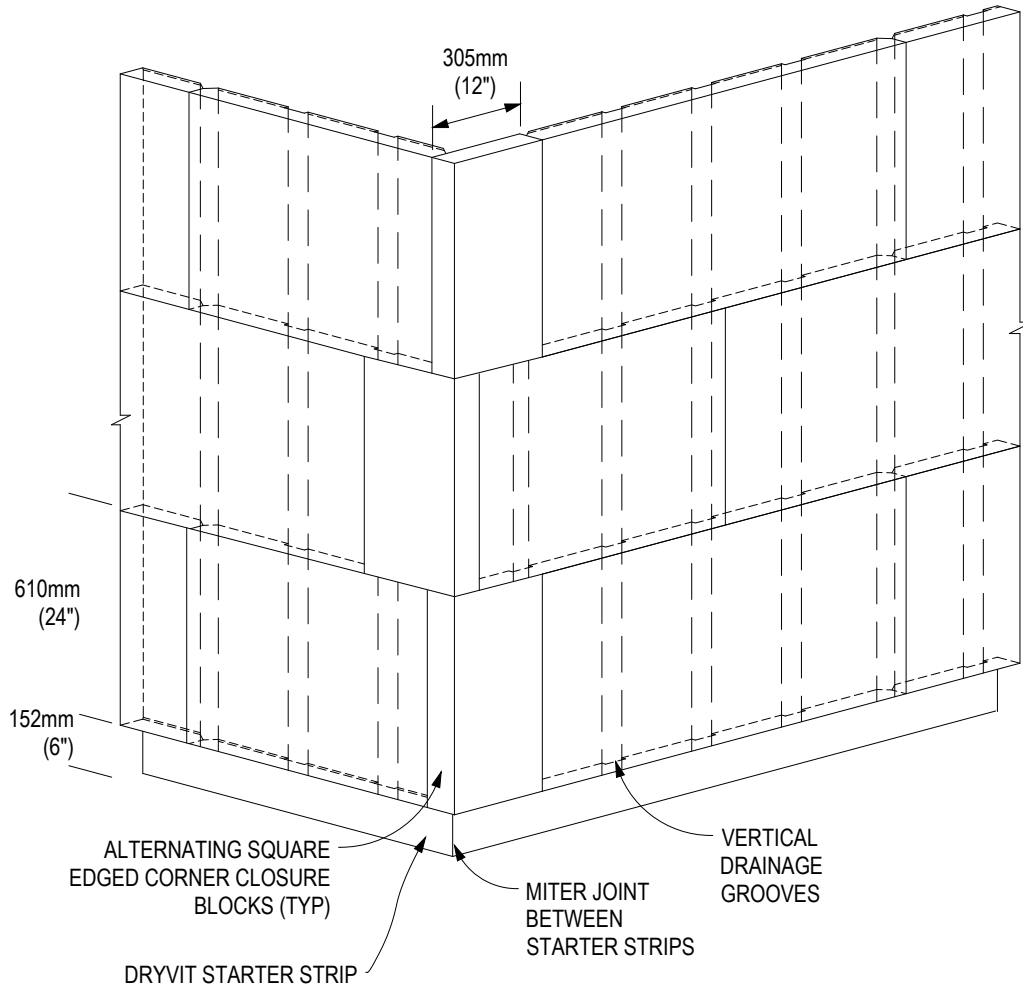
www.tremcocpg.com

File Name:

OMD.02



Construction Products Group



NOTES:

1. THESE DETAILS APPLY TO BOTH OUTSULATION MD AND OUTSULATION MD (NC). OUTSULATION® MD (NC) REQUIRES THE USE OF PRIMUS® DM OR GENESIS™ DM AS THE BASE COAT/ADHESIVE.
2. DRYVIT RECOMMENDS THAT GROUND FLOOR APPLICATIONS AND ALL FACADES EXPOSED TO ABNORMAL STRESS, HIGH TRAFFIC, OR DELIBERATE IMPACT HAVE THE BASE COAT REINFORCED WITH PANZER® 15 OR 20 MESH PRIOR TO STANDARD MESH. LOCATION OF HIGH IMPACT ZONES SHOULD BE INDICATED IN CONTRACT DRAWINGS.
3. INSTALL SQUARE EDGED CORNER CLOSURE BLOCKS ON ALTERNATING SIDES OF OUTSIDE CORNERS.
4. ALIGNMENT OF VERTICAL GROOVES NOT REQUIRED.
5. CLOSURE BLOCKS NOT REQUIRED AT VERTICAL TERMINATIONS, I.E. EXPANSION JOINTS AND VERTICAL INTEGRATION WITH OTHER CLADDING.

This detail is for general informational purposes, only. The project design professional determines, in its sole discretion, whether this detail or a functionally equivalent detail is best suited for the project with respect to any architecture, engineering, and design requirements, including any local building code requirements. If this document is not reviewed and the product is not approved for use by a licensed design professional, the customer agrees that the detail may contain substantive flaws requiring correction, and hereby releases Tremco CPG Inc. from any and all liability related to the design and installation of the product. This detail is subject to change without notice. Contact Tremco to ensure you have the most recent version.

Outsulation® MD (NC)

Detail: EPS Board Layout - Drainage Option 1

File Name:

Drawn by:

Checked by: AS

Scale: NTS

Revision #: 06

Revised by: KAB

Date: 8/14/2024

OMD.03

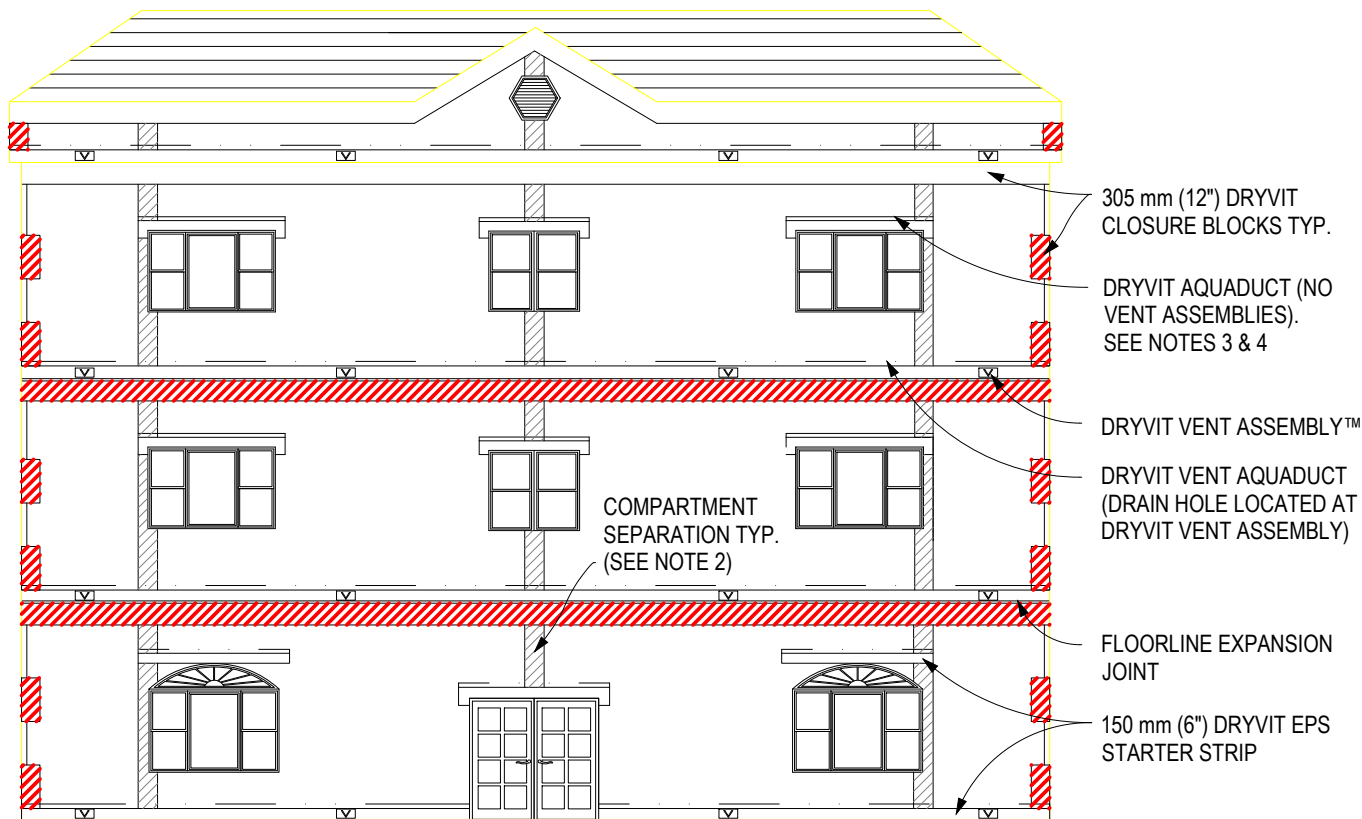


Dryvit Technical Support: 800-556-7752



Construction Products Group

www.tremcocpg.com



BUILDING FACADE - AQUADUCT PLACEMENT DRAINAGE OPTION 2

NOTES:

1. THESE DETAILS APPLY TO BOTH OUTSULATION MD AND OUTSULATION MD (NC). OUTSULATION® MD (NC) REQUIRES THE USE OF PRIMUS® DM OR GENESIS™ DM AS THE BASE COAT/ADHESIVE.

OPTION 2 NOTES:

2. COMPARTMENT LOCATIONS DETERMINED AS PER ASCE 7-95 AND DRYVIT OUTSULATION MD SYSTEM SPECIFICATIONS DSC168.
3. VERTICAL COMPARTMENT SEPARATIONS NOT REQUIRED WHERE PRESSURE EQUALIZATION IS NOT DESIRED.
4. DRYVIT STARTER STRIP ABOVE WINDOW TO BE NOTCHED A MINIMUM OF 152.4MM (6") TO ACCOMMODATE PICTURE FRAMING.
5. FOR WINDOWS/GLAZING GREATER THAN 3M (10') WIDE, SEE DETAIL OMD.09
6. ALIGNMENT OF VERTICAL GROOVES NOT REQUIRED.

This detail is for general informational purposes, only. The project design professional determines, in its sole discretion, whether this detail or a functionally equivalent detail is best suited for the project with respect to any architecture, engineering, and design requirements, including any local building code requirements. If this document is not reviewed and the product is not approved for use by a licensed design professional, the customer agrees that the detail may contain substantive flaws requiring correction, and hereby releases Tremco CPG Inc. from any and all liability related to the design and installation of the product. This detail is subject to change without notice. Contact Tremco to ensure you have the most recent version.

Outsulation® MD (NC)

Detail: Aquaduct Placement Drainage Option 2

File Name:

Drawn by:

Checked by: AS

Scale: NTS

OMD.04

Revision #: 06

Revised by: KAB

Date: 8/14/2024

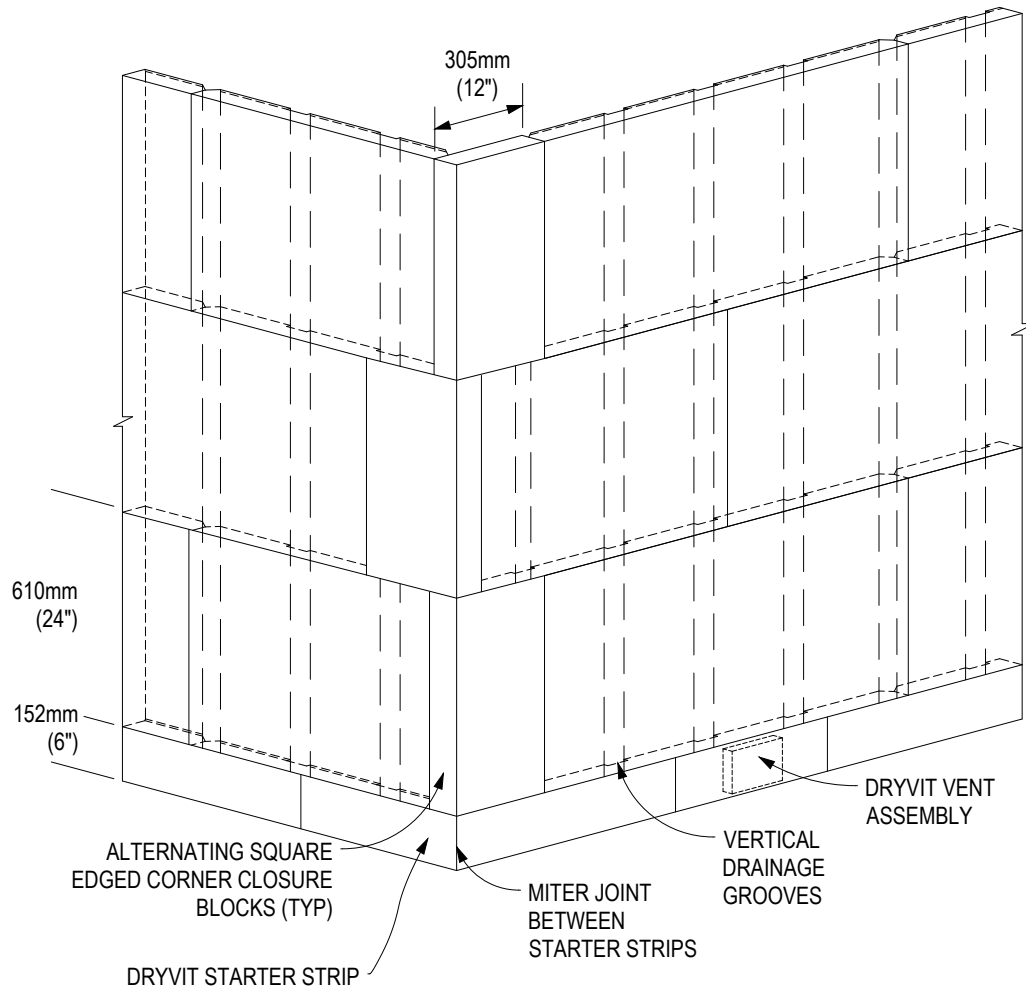
www.tremcocpg.com



Dryvit Technical Support: 800-556-7752



Construction Products Group



NOTES:

1. THESE DETAILS APPLY TO BOTH OUTSULATION MD AND OUTSULATION MD (NC). OUTSULATION® MD (NC) REQUIRES THE USE OF PRIMUS® DM OR GENESIS™ DM AS THE BASE COAT/ADHESIVE.
2. DRYVIT RECOMMENDS THAT GROUND FLOOR APPLICATIONS AND ALL FACADES EXPOSED TO ABNORMAL STRESS, HIGH TRAFFIC, OR DELIBERATE IMPACT HAVE THE BASE COAT REINFORCED WITH PANZER® 15 OR 20 MESH PRIOR TO STANDARD MESH. LOCATION OF HIGH IMPACT ZONES SHOULD BE INDICATED IN CONTRACT DRAWINGS.
3. INSTALL SQUARE EDGED CORNER CLOSURE BLOCKS ON ALTERNATING SIDES OF OUTSIDE CORNERS.
4. ALIGNMENT OF VERTICAL GROOVES NOT REQUIRED.
5. CLOSURE BLOCKS NOT REQUIRED AT VERTICAL TERMINATIONS, I.E. EXPANSION JOINTS AND VERTICAL INTEGRATION WITH OTHER CLADDING.
6. ALIGNMENT OF VERTICAL GROOVES NOT REQUIRED.

This detail is for general informational purposes, only. The project design professional determines, in its sole discretion, whether this detail or a functionally equivalent detail is best suited for the project with respect to any architecture, engineering, and design requirements, including any local building code requirements. If this document is not reviewed and the product is not approved for use by a licensed design professional, the customer agrees that the detail may contain substantive flaws requiring correction, and hereby releases Tremco CPG Inc. from any and all liability related to the design and installation of the product. This detail is subject to change without notice. Contact Tremco to ensure you have the most recent version.

Outsulation® MD (NC)

Detail: Outside Corner - EPS Board Layout - Drainage Opt. 2

File Name:

Drawn by:

Checked by: AS

Scale: NTS

Revision #: 06

Revised by: KAB

Date: 8/14/2024

OMD.05

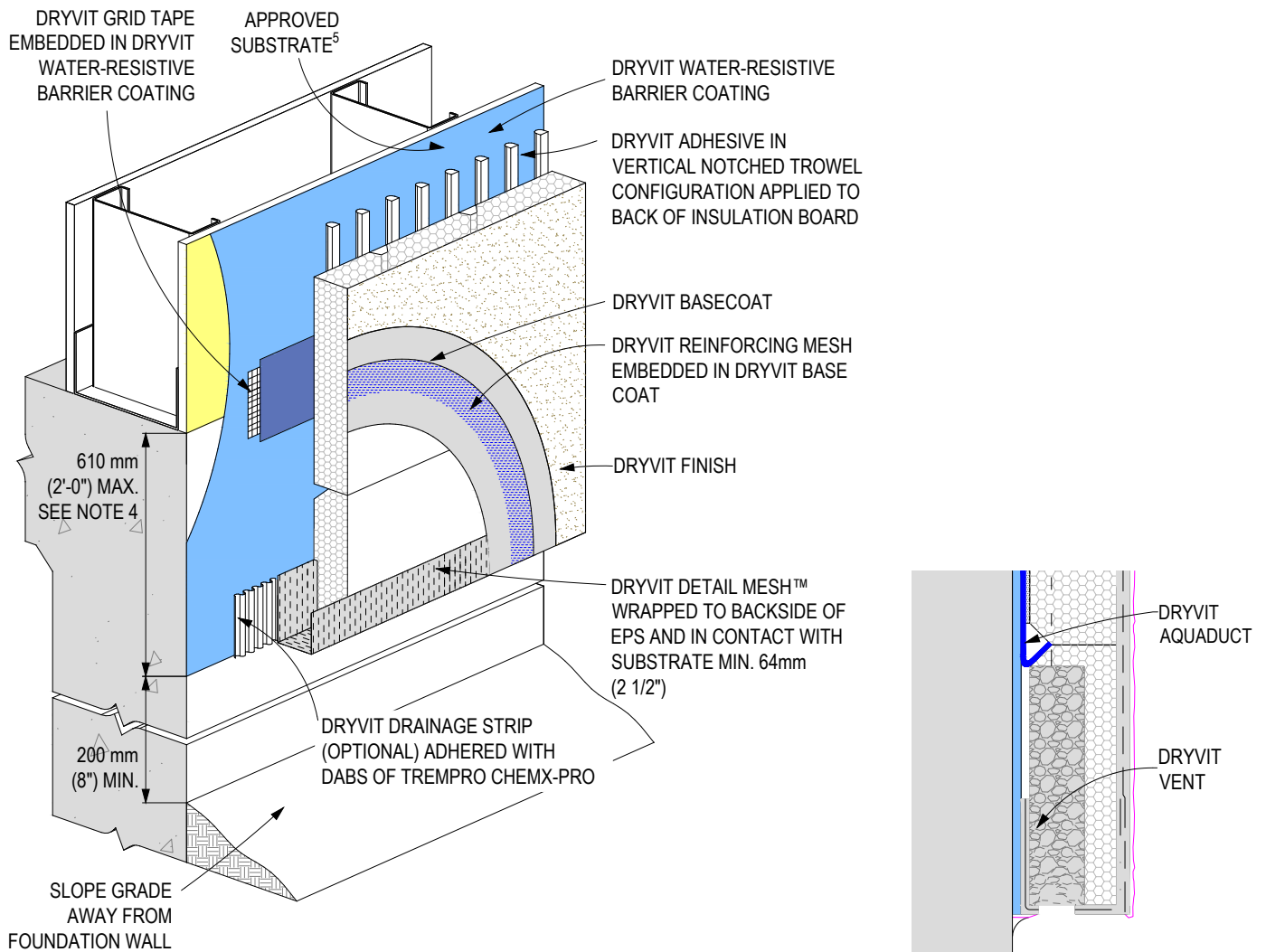


Dryvit Technical Support: 800-556-7752

www.tremcocpg.com



Construction Products Group



AQUADUCT DRAINAGE OPTION 2

NOTES:

1. THESE DETAILS APPLY TO BOTH OUTSULATION MD AND OUTSULATION MD (NC). OUTSULATION® MD (NC) REQUIRES THE USE OF PRIMUS® DM OR GENESIS™ DM AS THE BASE COAT/ADHESIVE.
2. DRYVIT RECOMMENDS THAT GROUND FLOOR APPLICATIONS AND ALL FACADES EXPOSED TO ABNORMAL STRESS, HIGH TRAFFIC, OR DELIBERATE IMPACT HAVE THE BASE COAT REINFORCED WITH PANZER® 15 OR 20 MESH PRIOR TO STANDARD MESH. LOCATION OF HIGH IMPACT ZONES SHOULD BE INDICATED IN CONTRACT DRAWINGS.
3. LIGHTLY SAND SURFACE OF TRACK TO MAXIMIZE ADHESION.
4. EXPANSION JOINT IS REQUIRED ALONG TOP OF FOUNDATION IF 610MM (2'-0") DIMENSION IS EXCEEDED.
5. ALIGNMENT OF VERTICAL GROOVES NOT REQUIRED.

This detail is for general informational purposes, only. The project design professional determines, in its sole discretion, whether this detail or a functionally equivalent detail is best suited for the project with respect to any architecture, engineering, and design requirements, including any local building code requirements. If this document is not reviewed and the product is not approved for use by a licensed design professional, the customer agrees that the detail may contain substantive flaws requiring correction, and hereby releases Tremco CPG Inc. from any and all liability related to the design and installation of the product. This detail is subject to change without notice. Contact Tremco to ensure you have the most recent version.

Outsulation® MD (NC)

Detail: Termination at Grade Level

File Name:

Drawn by:

Checked by: AS

Scale: NTS

OMD.06

Revision #: 06

Revised by: KAB

Date: 8/14/2024

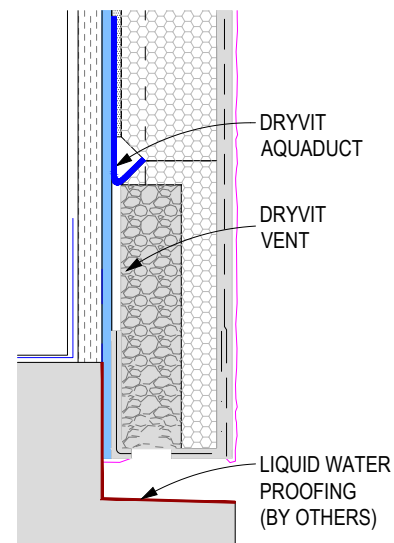
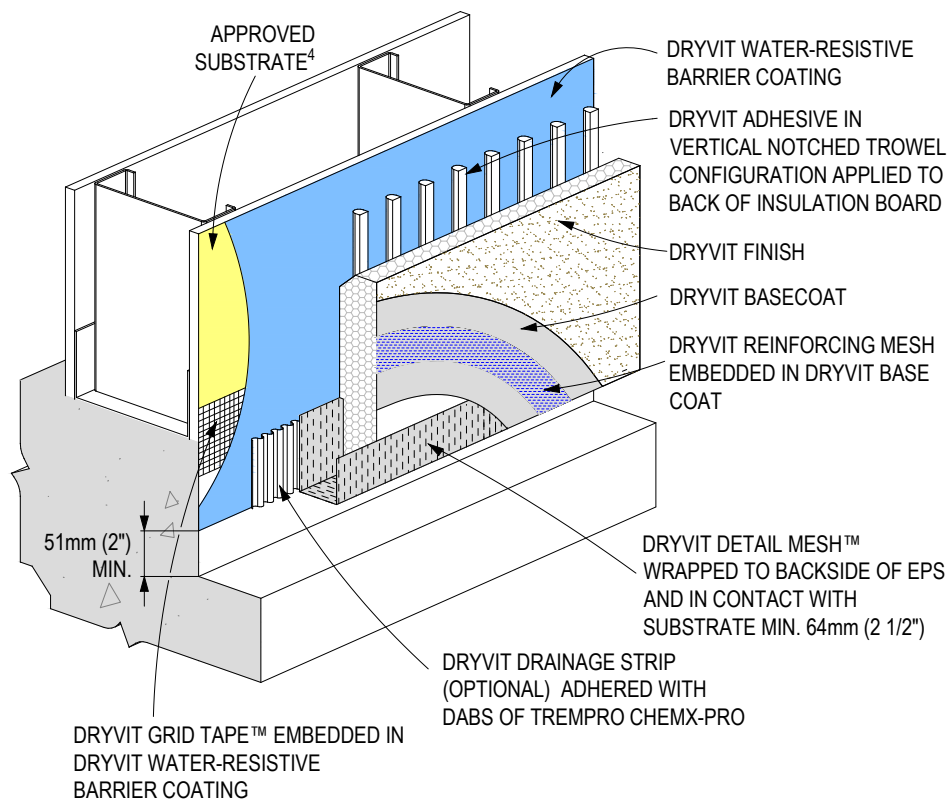
www.tremcocpg.com



Dryvit Technical Support: 800-556-7752



Construction Products Group



AQUADUCT DRAINAGE OPTION 2

NOTES:

1. THESE DETAILS APPLY TO BOTH OUTSULATION MD AND OUTSULATION MD (NC). OUTSULATION® MD (NC) REQUIRES THE USE OF PRIMUS® DM OR GENESIS™ DM AS THE BASE COAT/ADHESIVE.
2. DRYVIT RECOMMENDS THAT GROUND FLOOR APPLICATIONS AND ALL FACADES EXPOSED TO ABNORMAL STRESS, HIGH TRAFFIC, OR DELIBERATE IMPACT HAVE THE BASE COAT REINFORCED WITH PANZER® 15 OR 20 MESH PRIOR TO STANDARD MESH. LOCATION OF HIGH IMPACT ZONES SHOULD BE INDICATED IN CONTRACT DRAWINGS.
3. LIGHTLY SAND SURFACE OF TRACK TO MAXIMIZE ADHESION.
4. ALIGNMENT OF VERTICAL GROOVES NOT REQUIRED.

This detail is for general informational purposes, only. The project design professional determines, in its sole discretion, whether this detail or a functionally equivalent detail is best suited for the project with respect to any architecture, engineering, and design requirements, including any local building code requirements. If this document is not reviewed and the product is not approved for use by a licensed design professional, the customer agrees that the detail may contain substantive flaws requiring correction, and hereby releases Tremco CPG Inc. from any and all liability related to the design and installation of the product. This detail is subject to change without notice. Contact Tremco to ensure you have the most recent version.

Outsulation® MD (NC)



Dryvit Technical Support: 800-556-7752

Detail: Termination at Concrete

Drawn by:

Checked by: AS

Scale: NTS

Revision #: 06

Revised by: KAB

Date: 8/14/2024

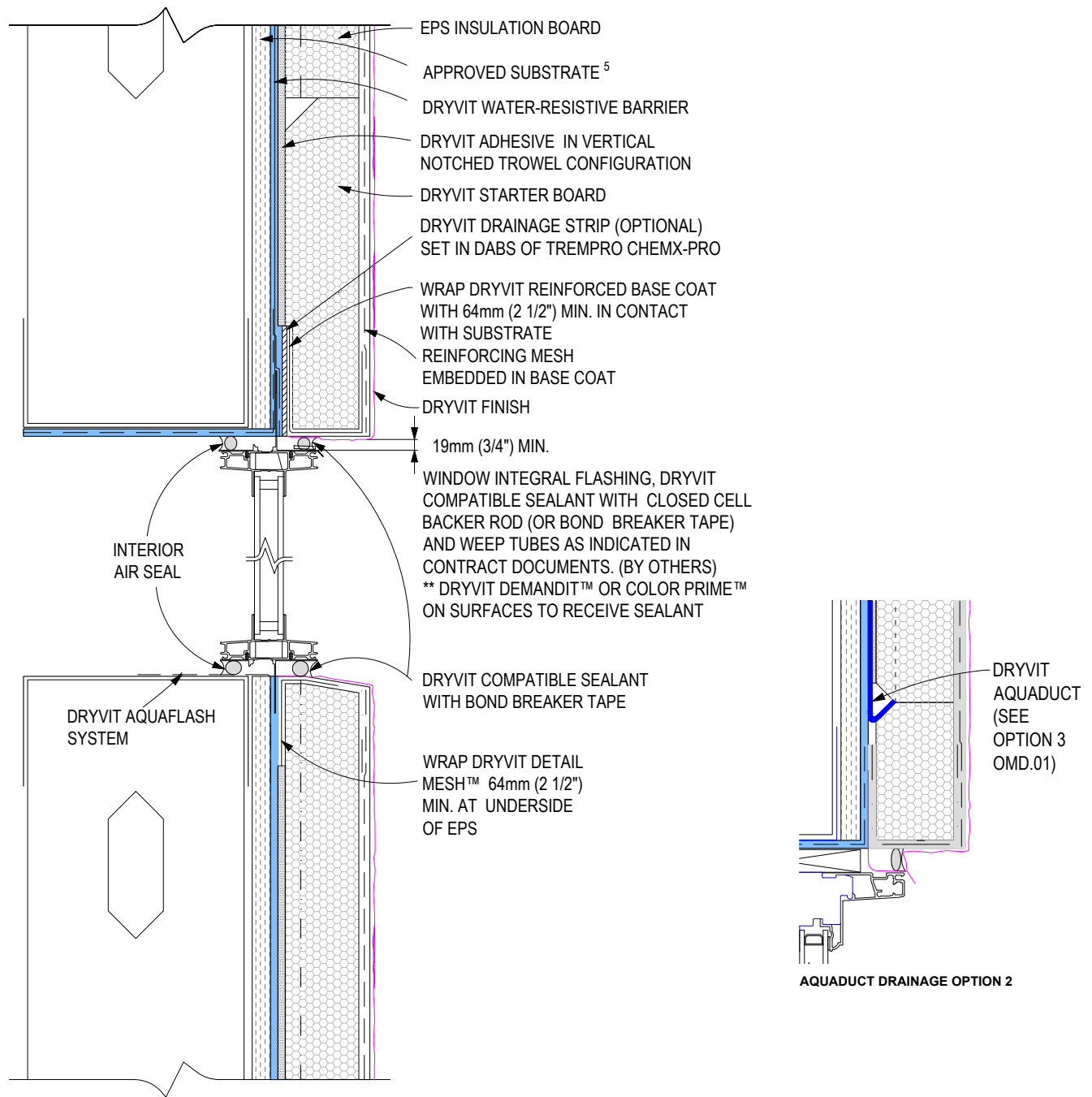
File Name:

OMD.07



Construction Products Group

www.tremcocpg.com



NOTES:

1. THESE DETAILS APPLY TO BOTH OUTSULATION MD AND OUTSULATION MD (NC). OUTSULATION® MD (NC) REQUIRES THE USE OF PRIMUS® DM OR GENESIS™ DM AS THE BASE COAT/ADHESIVE.
2. DRYVIT RECOMMENDS THAT GROUND FLOOR APPLICATIONS AND ALL FACADES EXPOSED TO ABNORMAL STRESS, HIGH TRAFFIC, OR DELIBERATE IMPACT HAVE THE BASE COAT REINFORCED WITH PANZER® 15 OR 20 MESH PRIOR TO STANDARD MESH. LOCATION OF HIGH IMPACT ZONES SHOULD BE INDICATED IN CONTRACT DRAWINGS.
3. WINDOW FLASHING AND SEALANTS BY OTHERS.
4. GENERAL CONTRACTOR REQUIRED TO COORDINATE ROUGH OPENING PREPARATION PRIOR TO WINDOW INSTALLATION.
5. ALIGNMENT OF VERTICAL GROOVES NOT REQUIRED.

This detail is for general informational purposes, only. The project design professional determines, in its sole discretion, whether this detail or a functionally equivalent detail is best suited for the project with respect to any architecture, engineering, and design requirements, including any local building code requirements. If this document is not reviewed and the product is not approved for use by a licensed design professional, the customer agrees that the detail may contain substantive flaws requiring correction, and hereby releases Tremco CPG Inc. from any and all liability related to the design and installation of the product. This detail is subject to change without notice. Contact Tremco to ensure you have the most recent version.

Outsulation® MD (NC)

Detail: Protection of Rough Openings

Drawn by:

Checked by: AS

Scale: NTS

Revision #: 06

Revised by: KAB

Date: 8/14/2024

File Name:

OMD.09

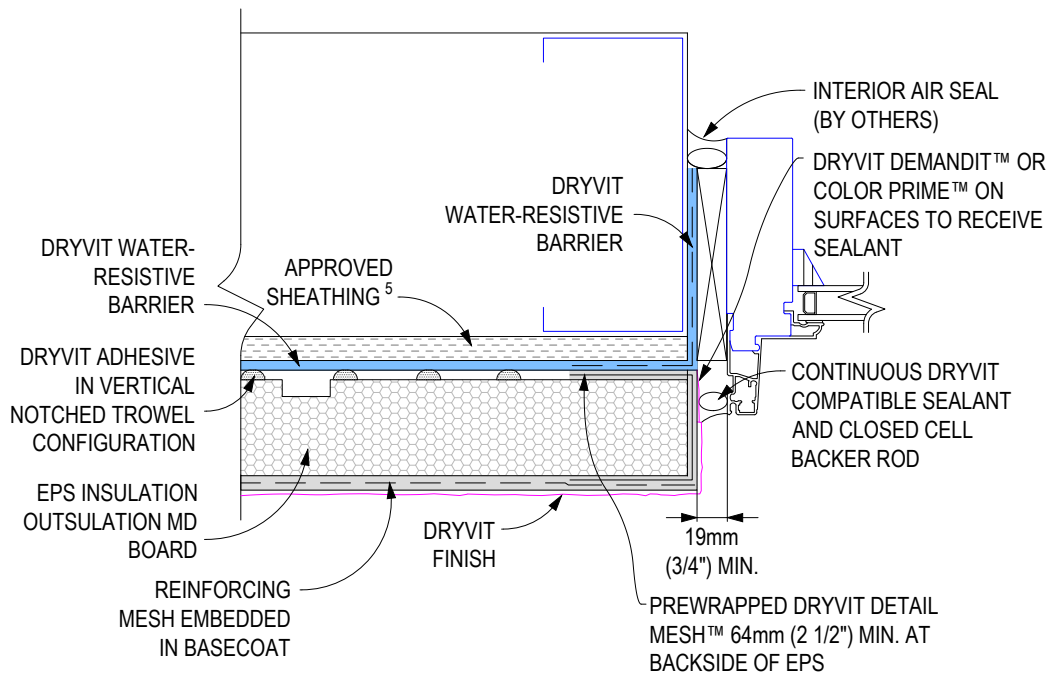


Dryvit Technical Support: 800-556-7752

www.tremcocpg.com



Construction Products Group



NOTES:

1. THESE DETAILS APPLY TO BOTH OUTSULATION MD AND OUTSULATION MD (NC). OUTSULATION® MD (NC) REQUIRES THE USE OF PRIMUS® DM OR GENESIS™ DM AS THE BASE COAT/ADHESIVE.
2. DRYVIT RECOMMENDS THAT GROUND FLOOR APPLICATIONS AND ALL FACADES EXPOSED TO ABNORMAL STRESS, HIGH TRAFFIC, OR DELIBERATE IMPACT HAVE THE BASE COAT REINFORCED WITH PANZER® 15 OR 20 MESH PRIOR TO STANDARD MESH. LOCATION OF HIGH IMPACT ZONES SHOULD BE INDICATED IN CONTRACT DRAWINGS.
3. WINDOW, FLASHING AND SEALANTS BY OTHERS.
4. GENERAL CONTRACTOR REQUIRED TO COORDINATE ROUGH OPENING PREPARATION PRIOR TO WINDOW INSTALLATION.
5. ALIGNMENT OF VERTICAL GROOVES NOT REQUIRED.

This detail is for general informational purposes only. The project design professional determines, in its sole discretion, whether this detail or a functionally equivalent detail is best suited for the project with respect to any architecture, engineering, and design requirements, including any local building code requirements. If this document is not reviewed and the product is not approved for use by a licensed design professional, the customer agrees that the detail may contain substantive flaws requiring correction, and hereby releases Tremco CPG Inc. from any and all liability related to the design and installation of the product. This detail is subject to change without notice. Contact Tremco to ensure you have the most recent version.

Outsulation® MD (NC)

Detail: Window Jambs

File Name:

Drawn by:

Checked by: AS

Scale: NTS

OMD.10

Revision #: 06

Revised by: KAB

Date: 8/14/2024

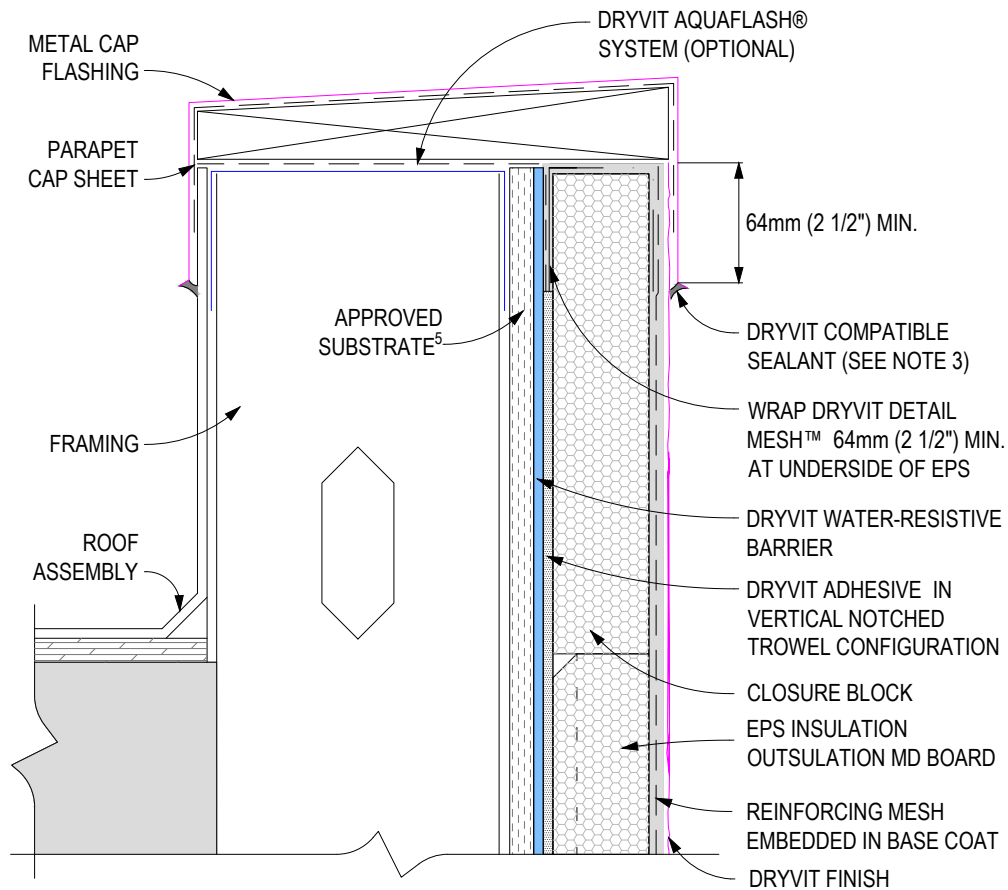
www.tremcocpg.com



Dryvit Technical Support: 800-556-7752



Construction Products Group



NOTES:

1. THESE DETAILS APPLY TO BOTH OUTSULATION MD AND OUTSULATION MD (NC). OUTSULATION® MD (NC) REQUIRES THE USE OF PRIMUS® DM OR GENESIS™ DM AS THE BASE COAT/ADHESIVE.
2. DRYVIT RECOMMENDS THAT GROUND FLOOR APPLICATIONS AND ALL FACADES EXPOSED TO ABNORMAL STRESS, HIGH TRAFFIC, OR DELIBERATE IMPACT HAVE THE BASE COAT REINFORCED WITH PANZER® 15 OR 20 MESH PRIOR TO STANDARD MESH. LOCATION OF HIGH IMPACT ZONES SHOULD BE INDICATED IN CONTRACT DRAWINGS.
3. ENSURE THAT PARAPET CAPPING IS WATER TIGHT IF SEALANT IS TO BE APPLIED HERE. OTHERWISE EXTEND CAPPING OVERLAP AS REQUIRED TO AVOID MOISTURE MIGRATION BEHIND SYSTEM.
4. ROOFING, BLOCKING, SECONDARY WATERPROOFING AND CAP FLASHING IS BY OTHERS.
5. ALIGNMENT OF VERTICAL GROOVES NOT REQUIRED.

This detail is for general informational purposes only. The project design professional determines, in its sole discretion, whether this detail or a functionally equivalent detail is best suited for the project with respect to any architecture, engineering, and design requirements, including any local building code requirements. If this document is not reviewed and the product is not approved for use by a licensed design professional, the customer agrees that the detail may contain substantive flaws requiring correction, and hereby releases Tremco CPG Inc. from any and all liability related to the design and installation of the product. This detail is subject to change without notice. Contact Tremco to ensure you have the most recent version.

Outsulation® MD (NC)

Detail: Parapet - Cap Flashing

File Name:

Drawn by:

Checked by: AS

Scale: NTS

OMD.11

Revision #: 06

Revised by: KAB

Date: 8/14/2024

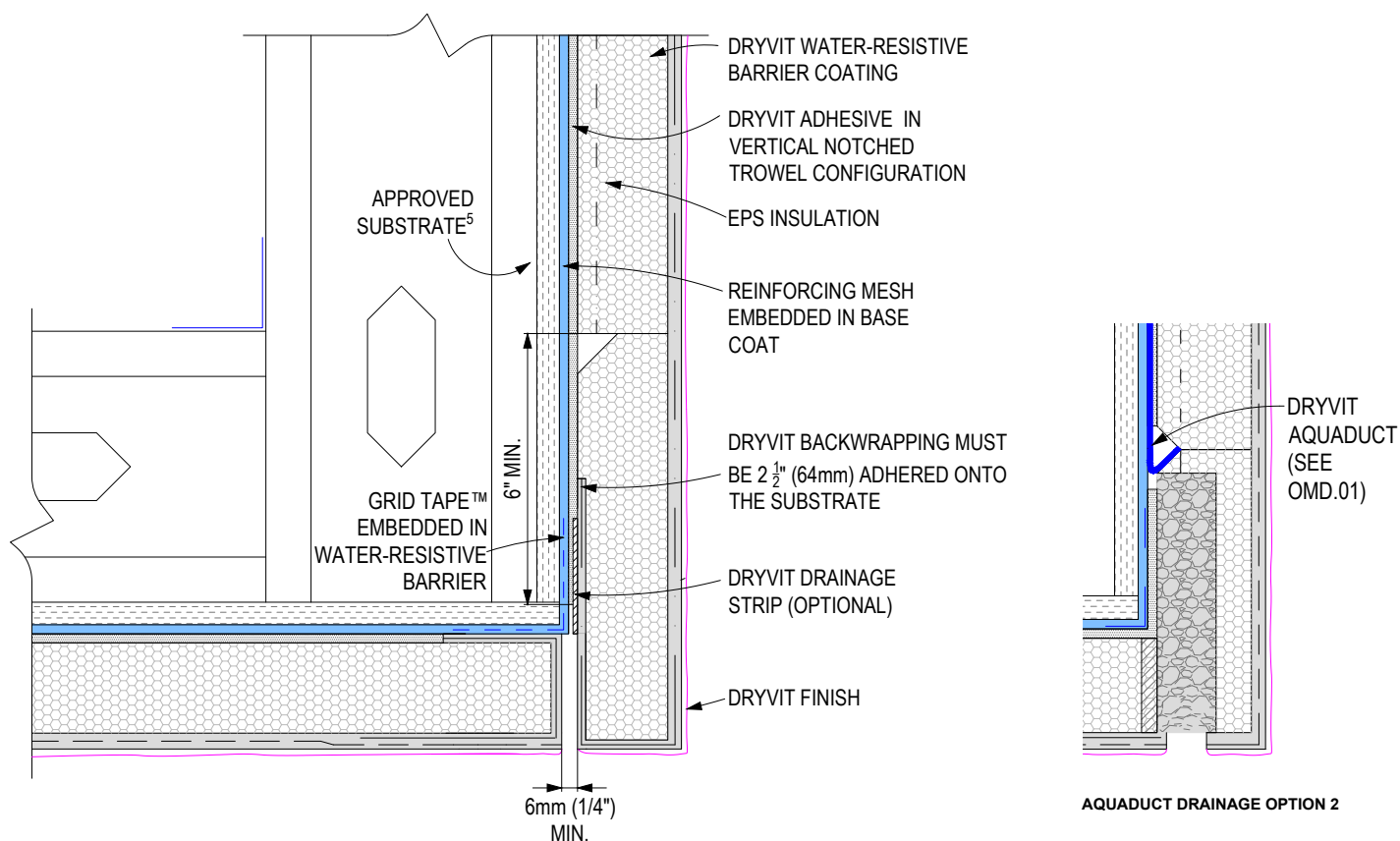
www.tremcocpg.com



Dryvit Technical Support: 800-556-7752



Construction Products Group





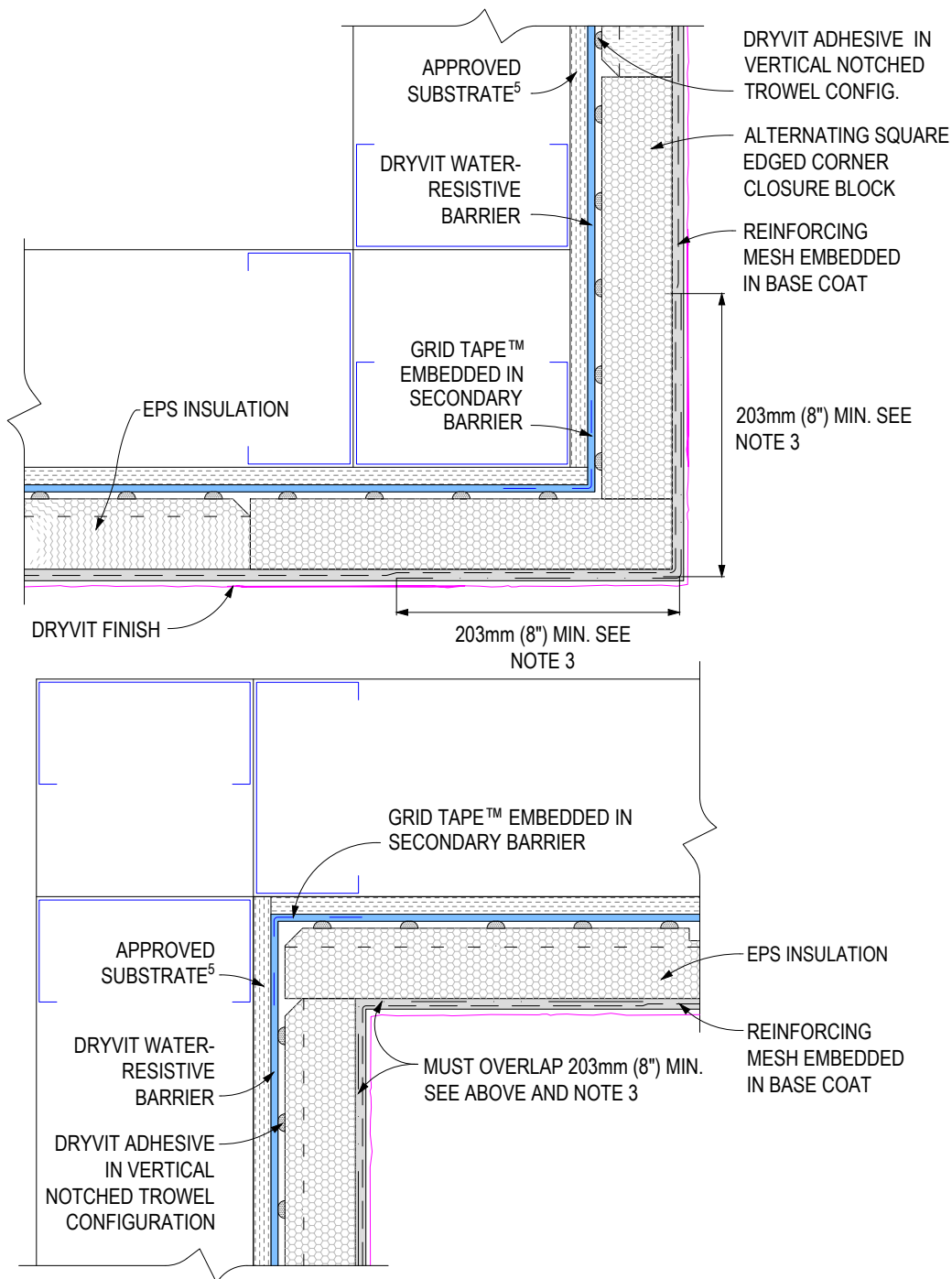
NOTES:

1. THESE DETAILS APPLY TO BOTH OUTSULATION MD AND OUTSULATION MD (NC). OUTSULATION® MD (NC) REQUIRES THE USE OF PRIMUS® DM OR GENESIS™ DM AS THE BASE COAT/ADHESIVE.
2. DRYVIT RECOMMENDS THAT GROUND FLOOR APPLICATIONS AND ALL FACADES EXPOSED TO ABNORMAL STRESS, HIGH TRAFFIC, OR DELIBERATE IMPACT HAVE THE BASE COAT REINFORCED WITH PANZER® 15 OR 20 MESH PRIOR TO STANDARD MESH. LOCATION OF HIGH IMPACT ZONES SHOULD BE INDICATED IN CONTRACT DRAWINGS.
3. LIGHTLY SAND SURFACE OF TRACK TO MAXIMIZE ADHESION.
4. AQUAFASH MESH OR DETAIL MESH CAN BE USED AT SHEATHING TRANSITION - WALL TO SOFFIT.
5. ALIGNMENT OF VERTICAL GROOVES NOT REQUIRED.

This detail is for general informational purposes, only. The project design professional determines, in its sole discretion, whether this detail or a functionally equivalent detail is best suited for the project with respect to any architecture, engineering, and design requirements, including any local building code requirements. If this document is not reviewed and the product is not approved for use by a licensed design professional, the customer agrees that the detail may contain substantive flaws requiring correction, and hereby releases Tremco CPG Inc. from any and all liability related to the design and installation of the product. This detail is subject to change without notice. Contact Tremco to ensure you have the most recent version.

Outsulation® MD (NC)

 <p>Dryvit Technical Support: 800-556-7752</p>	Detail: Parapet - Cap Flashing			File Name: OMD.12	 <p>Construction Products Group</p>
	Drawn by:	Checked by: AS	Scale: NTS		
	Revision #: 06	Revised by: KAB	Date: 8/14/2024		





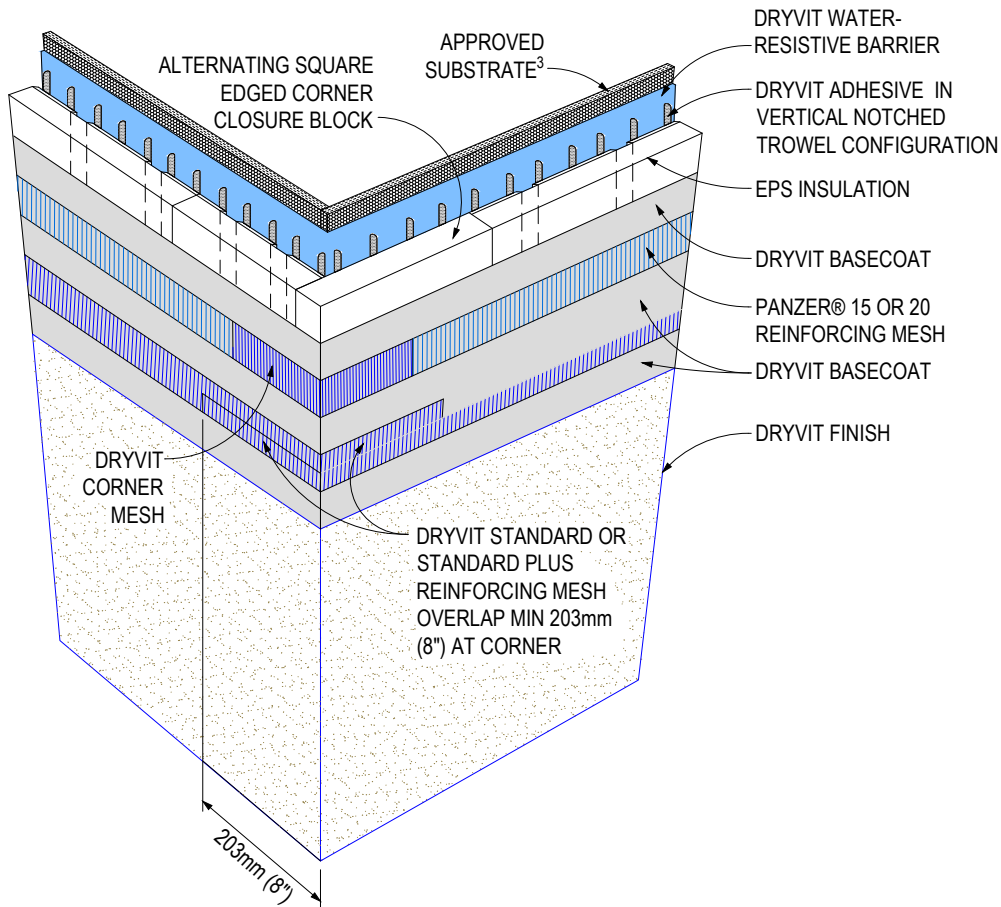
NOTES:

1. THESE DETAILS APPLY TO BOTH OUTSULATION MD AND OUTSULATION MD (NC). OUTSULATION® MD (NC) REQUIRES THE USE OF PRIMUS® DM OR GENESIS™ DM AS THE BASE COAT/ADHESIVE.
2. DRYVIT RECOMMENDS THAT GROUND FLOOR APPLICATIONS AND ALL FACADES EXPOSED TO ABNORMAL STRESS, HIGH TRAFFIC, OR DELIBERATE IMPACT HAVE THE BASE COAT REINFORCED WITH PANZER® 15 OR 20 MESH PRIOR TO STANDARD MESH. LOCATION OF HIGH IMPACT ZONES SHOULD BE INDICATED IN CONTRACT DRAWINGS.
3. DOUBLE WRAP OUTSIDE CORNERS WITH REINFORCING MESH AT LEAST 203MM (8") OR USE PANZER CORNER MESH.
4. AQUAFLASH MESH OR DETAIL MESH CAN BE USED AT SHEATHING TRANSITION - WALL TO SOFFIT.
5. ALIGNMENT OF VERTICAL GROOVES NOT REQUIRED.

This detail is for general informational purposes, only. The project design professional determines, in its sole discretion, whether this detail or a functionally equivalent detail is best suited for the project with respect to any architecture, engineering, and design requirements, including any local building code requirements. If this document is not reviewed and the product is not approved for use by a licensed design professional, the customer agrees that the detail may contain substantive flaws requiring correction, and hereby releases Tremco CPG Inc. from any and all liability related to the design and installation of the product. This detail is subject to change without notice. Contact Tremco to ensure you have the most recent version.

Outsulation® MD (NC)

 Dryvit Technical Support: 800-556-7752	Detail: Inside/Outside Corners			File Name:	 Construction Products Group
	Drawn by:	Checked by: AS	Scale: NTS	OMD.13	
	Revision #: 06	Revised by: KAB	Date: 8/14/2024		
	www.tremcocpa.com				



NOTES:

1. THESE DETAILS APPLY TO BOTH OUTSULATION MD AND OUTSULATION MD (NC). OUTSULATION® MD (NC) REQUIRES THE USE OF PRIMUS® DM OR GENESIS™ DM AS THE BASE COAT/ADHESIVE.
2. DRYVIT RECOMMENDS THAT GROUND FLOOR APPLICATIONS AND ALL FACADES EXPOSED TO ABNORMAL STRESS, HIGH TRAFFIC, OR DELIBERATE IMPACT HAVE THE BASE COAT REINFORCED WITH PANZER® 15 OR 20 MESH PRIOR TO STANDARD MESH. LOCATION OF HIGH IMPACT ZONES SHOULD BE INDICATED IN CONTRACT DRAWINGS.
3. ALIGNMENT OF VERTICAL GROOVES NOT REQUIRED.

This detail is for general informational purposes only. The project design professional determines, in its sole discretion, whether this detail or a functionally equivalent detail is best suited for the project with respect to any architecture, engineering, and design requirements, including any local building code requirements. If this document is not reviewed and the product is not approved for use by a licensed design professional, the customer agrees that the detail may contain substantive flaws requiring correction, and hereby releases Tremco CPG Inc. from any and all liability related to the design and installation of the product. This detail is subject to change without notice. Contact Tremco to ensure you have the most recent version.

Outsulation® MD (NC)

Detail: Outside Corner - High Impact

File Name:

Drawn by:

Checked by: AS

Scale: NTS

OMD.14

Revision #: 06

Revised by: KAB

Date: 8/14/2024

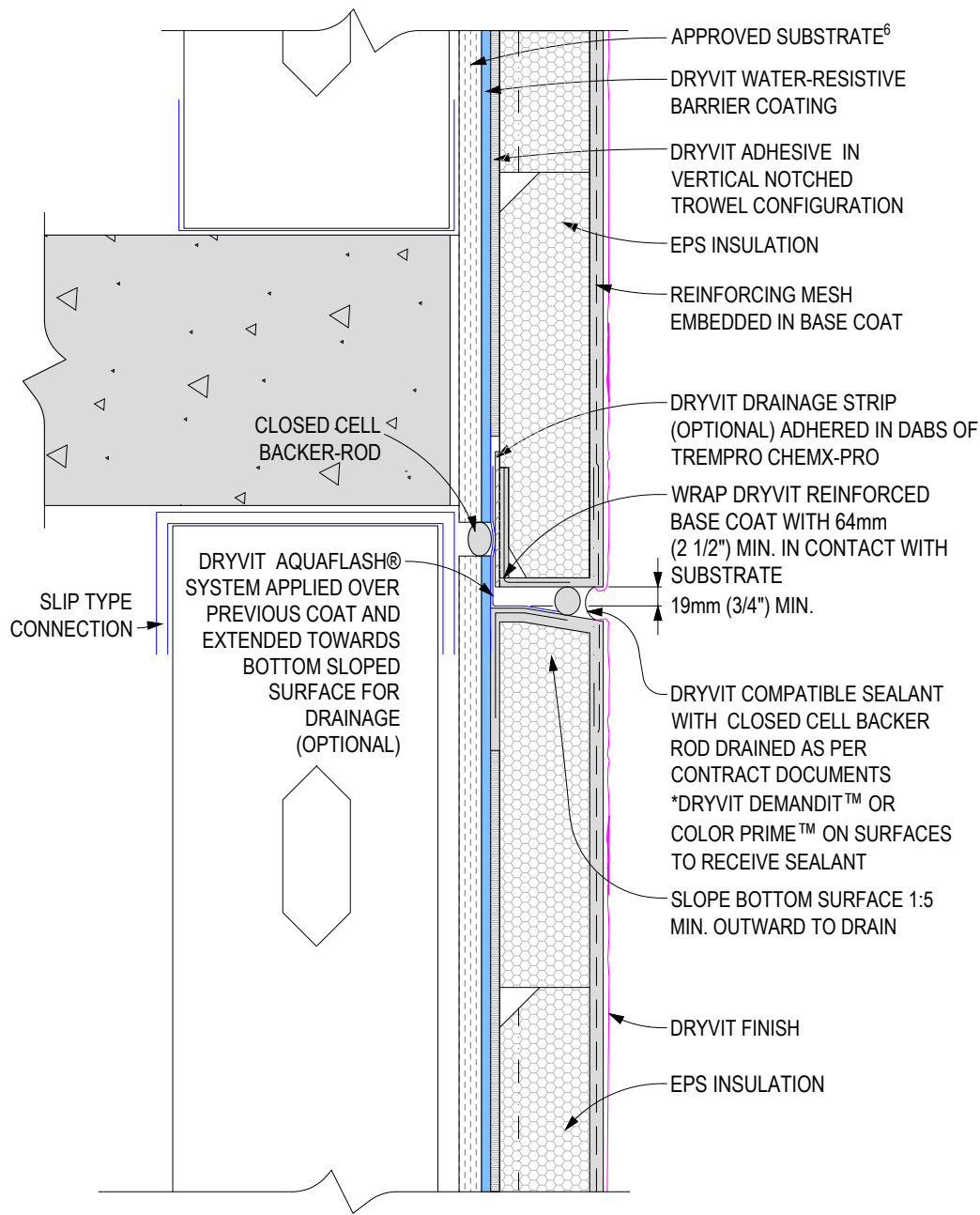
www.tremcocpg.com



Dryvit Technical Support: 800-556-7752



Construction Products Group



NOTES:

1. THESE DETAILS APPLY TO BOTH OUTSULATION MD AND OUTSULATION MD (NC). OUTSULATION® MD (NC) REQUIRES THE USE OF PRIMUS® DM OR GENESIS™ DM AS THE BASE COAT/ADHESIVE.
2. DRYVIT RECOMMENDS THAT GROUND FLOOR APPLICATIONS AND ALL FACADES EXPOSED TO ABNORMAL STRESS, HIGH TRAFFIC, OR DELIBERATE IMPACT HAVE THE BASE COAT REINFORCED WITH PANZER® 15 OR 20 MESH PRIOR TO STANDARD MESH. LOCATION OF HIGH IMPACT ZONES SHOULD BE INDICATED IN CONTRACT DRAWINGS.
3. EXPANSION JOINT IN THE OUTSULATION® MD (NC) SYSTEM IS NECESSARY WHERE SIGNIFICANT DIFFERENTIAL MOVEMENT IS EXPECTED TO OCCUR.
4. LOCATE EXTERNAL SEALANT JOINT WITHIN 50MM (2") OF BREAK IN SHEATHING.
5. APPLY DRYVIT AQUAFLASH SYSTEM OVER PREPARED JOINT AT CHANGE IN SUBSTRATE.
6. ALIGNMENT OF VERTICAL GROOVES NOT REQUIRED.

This detail is for general informational purposes, only. The project design professional determines, in its sole discretion, whether this detail or a functionally equivalent detail is best suited for the project with respect to any architecture, engineering, and design requirements, including any local building code requirements. If this document is not reviewed and the product is not approved for use by a licensed design professional, the customer agrees that the detail may contain substantive flaws requiring correction, and hereby releases Tremco CPG Inc. from any and all liability related to the design and installation of the product. This detail is subject to change without notice. Contact Tremco to ensure you have the most recent version.

Outsulation® MD (NC)

Detail: Horizontal Expansion Joint - Drainage Opt. 1

File Name:

Drawn by:

Checked by: AS

Scale: NTS

OMD.15

Revision #: 06

Revised by: KAB

Date: 8/14/2024

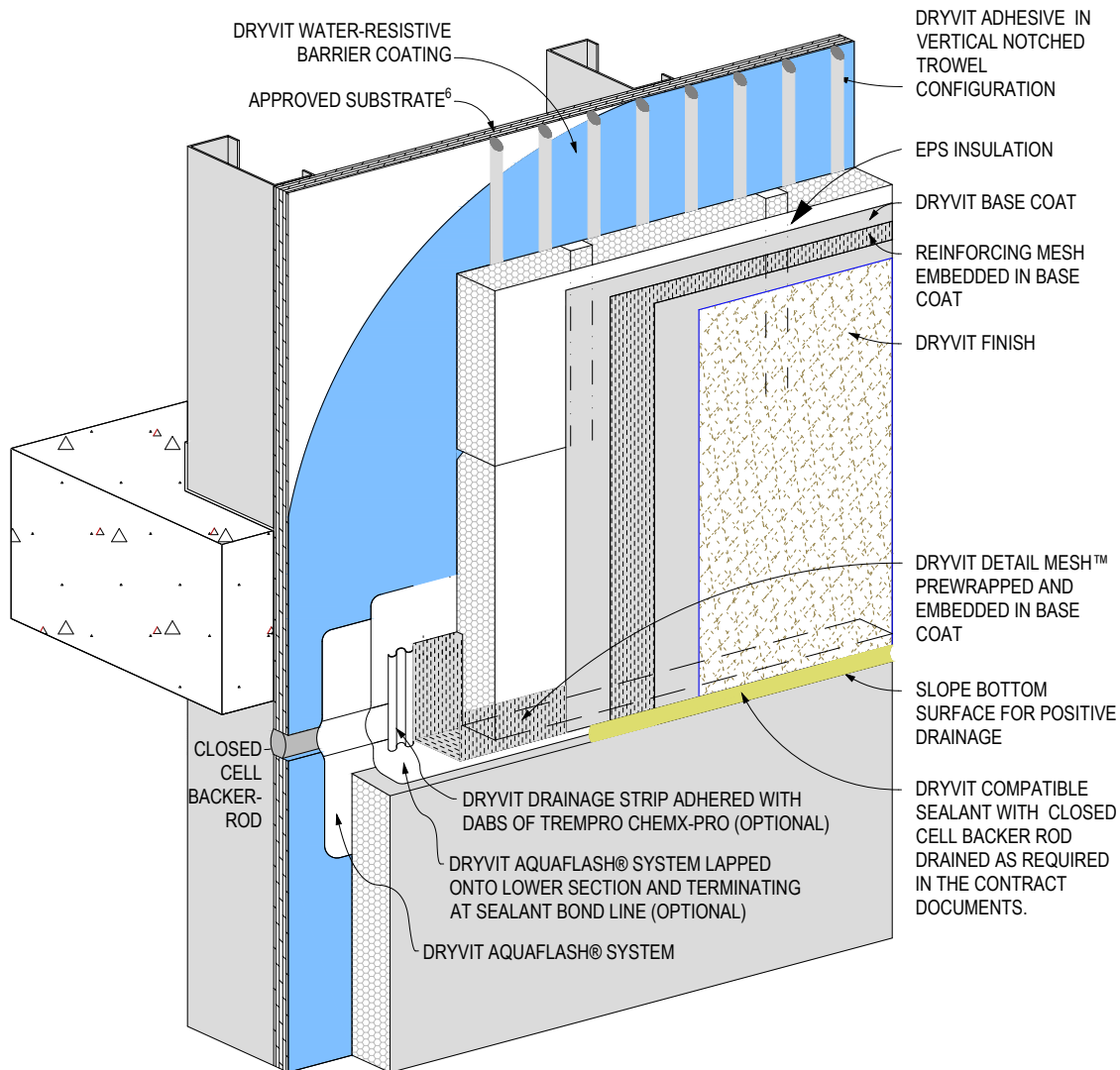
www.tremcocpg.com



Dryvit Technical Support: 800-556-7752



Construction Products Group



NOTES:

1. THESE DETAILS APPLY TO BOTH OUTSULATION MD AND OUTSULATION MD (NC). OUTSULATION® MD (NC) REQUIRES THE USE OF PRIMUS® DM OR GENESIS™ DM AS THE BASE COAT/ADHESIVE.
2. DRYVIT RECOMMENDS THAT GROUND FLOOR APPLICATIONS AND ALL FACADES EXPOSED TO ABNORMAL STRESS, HIGH TRAFFIC, OR DELIBERATE IMPACT HAVE THE BASE COAT REINFORCED WITH PANZER® 15 OR 20 MESH PRIOR TO STANDARD MESH. LOCATION OF HIGH IMPACT ZONES SHOULD BE INDICATED IN CONTRACT DRAWINGS.
3. EXPANSION JOINT IN THE OUTSULATION® MD (NC) SYSTEM IS NECESSARY WHERE SIGNIFICANT DIFFERENTIAL MOVEMENT IS EXPECTED AT FLOOR LINES.
4. LOCATE EXTERNAL SEALANT JOINT WITHIN 50MM (2") OF BREAK IN SHEATHING.
5. APPLY DRYVIT AQUAFLASH SYSTEM OVER PREPARED JOINT AT CHANGE IN SUBSTRATE.
6. ALIGNMENT OF VERTICAL GROOVES NOT REQUIRED.

This detail is for general informational purposes, only. The project design professional determines, in its sole discretion, whether this detail or a functionally equivalent detail is best suited for the project with respect to any architecture, engineering, and design requirements, including any local building code requirements. If this document is not reviewed and the product is not approved for use by a licensed design professional, the customer agrees that the detail may contain substantive flaws requiring correction, and hereby releases Tremco CPG Inc. from any and all liability related to the design and installation of the product. This detail is subject to change without notice. Contact Tremco to ensure you have the most recent version.

Outsulation® MD (NC)

Detail: Horizontal Expansion Joint - Drainage Opt. 1

File Name:

Drawn by:

Checked by: AS

Scale: NTS

OMD.16

Revision #: 07

Revised by: KAB

Date: 8/14/2024

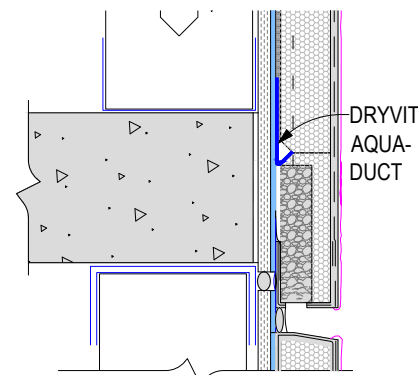
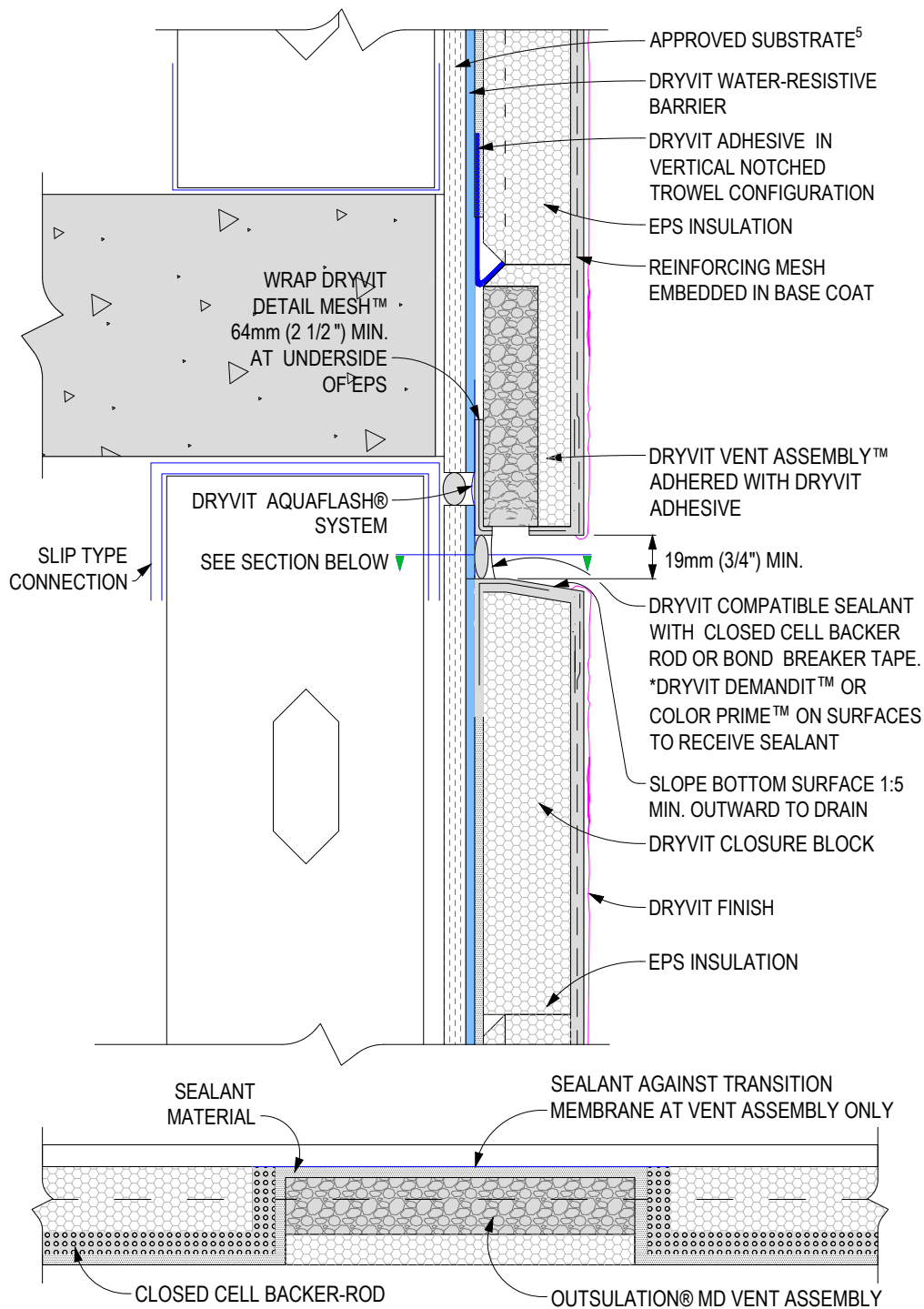
www.tremcocpg.com



Dryvit Technical Support: 800-556-7752



Construction Products Group



SECTION VIEW

NOTES:

1. THESE DETAILS APPLY TO BOTH OUTSULATION MD AND OUTSULATION MD (NC). OUTSULATION® MD (NC) REQUIRES THE USE OF PRIMUS® DM OR GENESIS™ DM AS THE BASE COAT/ADHESIVE.
2. DRYVIT RECOMMENDS THAT GROUND FLOOR APPLICATIONS AND ALL FACADES EXPOSED TO ABNORMAL STRESS, HIGH TRAFFIC, OR DELIBERATE IMPACT HAVE THE BASE COAT REINFORCED WITH PANZER® 15 OR 20 MESH PRIOR TO STANDARD MESH. LOCATION OF HIGH IMPACT ZONES SHOULD BE INDICATED IN CONTRACT DRAWINGS.
3. EXPANSION JOINT IN THE OUTSULATION® MD SYSTEM IS NECESSARY WHERE SIGNIFICANT DIFFERENTIAL MOVEMENT IS EXPECTED AT FLOOR LINES.
4. LOCATE EXTERNAL SEALANT JOINT WITHIN 50MM (2") OF BREAK IN SHEATHING.
5. ALIGNMENT OF VERTICAL GROOVES NOT REQUIRED.

This detail is for general informational purposes, only. The project design professional determines, in its sole discretion, whether this detail or a functionally equivalent detail is best suited for the project with respect to any architecture, engineering, and design requirements, including any local building code requirements. If this document is not reviewed and the product is not approved for use by a licensed design professional, the customer agrees that the detail may contain substantive flaws requiring correction, and hereby releases Tremco CPG Inc. from any and all liability related to the design and installation of the product. This detail is subject to change without notice. Contact Tremco to ensure you have the most recent version.

Outsulation® MD (NC)

Detail: Horizontal Expansion Joint - Drainage Opt. 2

File Name:

Drawn by:

Checked by: AS

Scale: NTS

OMD.17

Revision #: 06

Revised by: KAB

Date: 8/14/2024

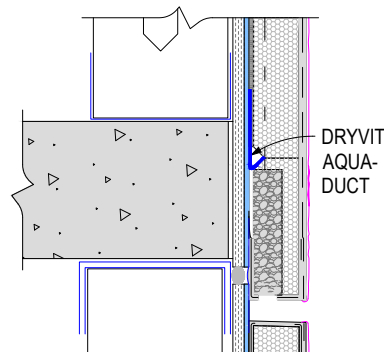
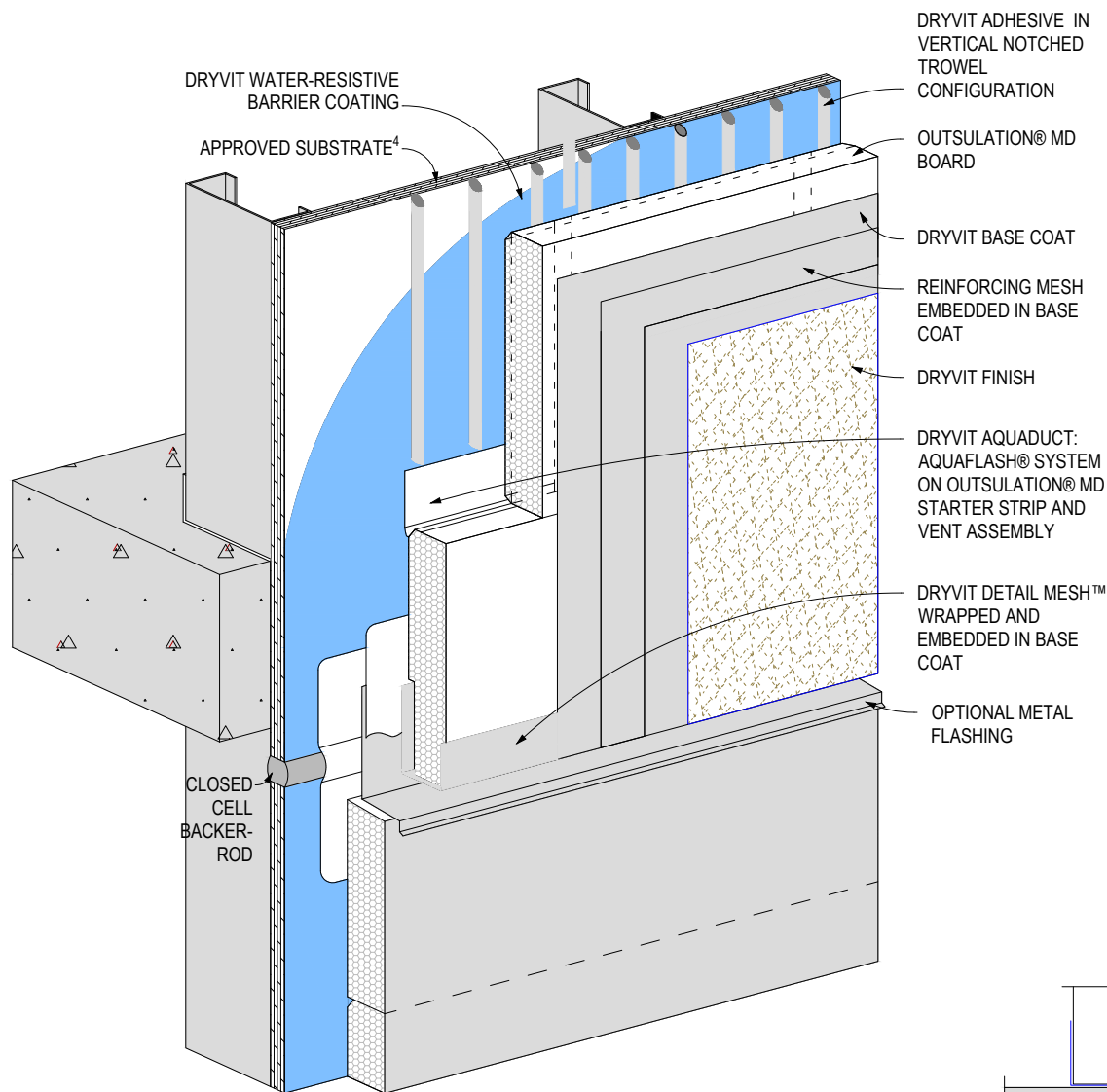
www.tremcocpg.com



Dryvit Technical Support: 800-556-7752



Construction Products Group



SECTION VIEW

NOTES:

1. THESE DETAILS APPLY TO BOTH OUTSULATION MD AND OUTSULATION MD (NC). OUTSULATION® MD (NC) REQUIRES THE USE OF PRIMUS® DM OR GENESIS™ DM AS THE BASE COAT/ADHESIVE.
2. DRYVIT RECOMMENDS THAT GROUND FLOOR APPLICATIONS AND ALL FACADES EXPOSED TO ABNORMAL STRESS, HIGH TRAFFIC, OR DELIBERATE IMPACT HAVE THE BASE COAT REINFORCED WITH PANZER® 15 OR 20 MESH PRIOR TO STANDARD MESH. LOCATION OF HIGH IMPACT ZONES SHOULD BE INDICATED IN CONTRACT DRAWINGS.
3. METAL FLASHING CAN BE SUBSTITUTED WITH AQUAFASH, AS PER THE CONTRACT DOCUMENTS.
4. ALIGNMENT OF VERTICAL GROOVES NOT REQUIRED.

This detail is for general informational purposes only. The project design professional determines, in its sole discretion, whether this detail or a functionally equivalent detail is best suited for the project with respect to any architecture, engineering, and design requirements, including any local building code requirements. If this document is not reviewed and the product is not approved for use by a licensed design professional, the customer agrees that the detail may contain substantive flaws requiring correction, and hereby releases Tremco CPG Inc. from any and all liability related to the design and installation of the product. This detail is subject to change without notice. Contact Tremco to ensure you have the most recent version.

Outsulation® MD (NC)



Dryvit Technical Support: 800-556-7752

Detail: Horizontal Expansion Joint - Drainage Option 2 with Through Wall Flashing

Drawn by:

Checked by: AS

Scale: NTS

Revision #: 06

Revised by: KAB

Date: 8/14/2024

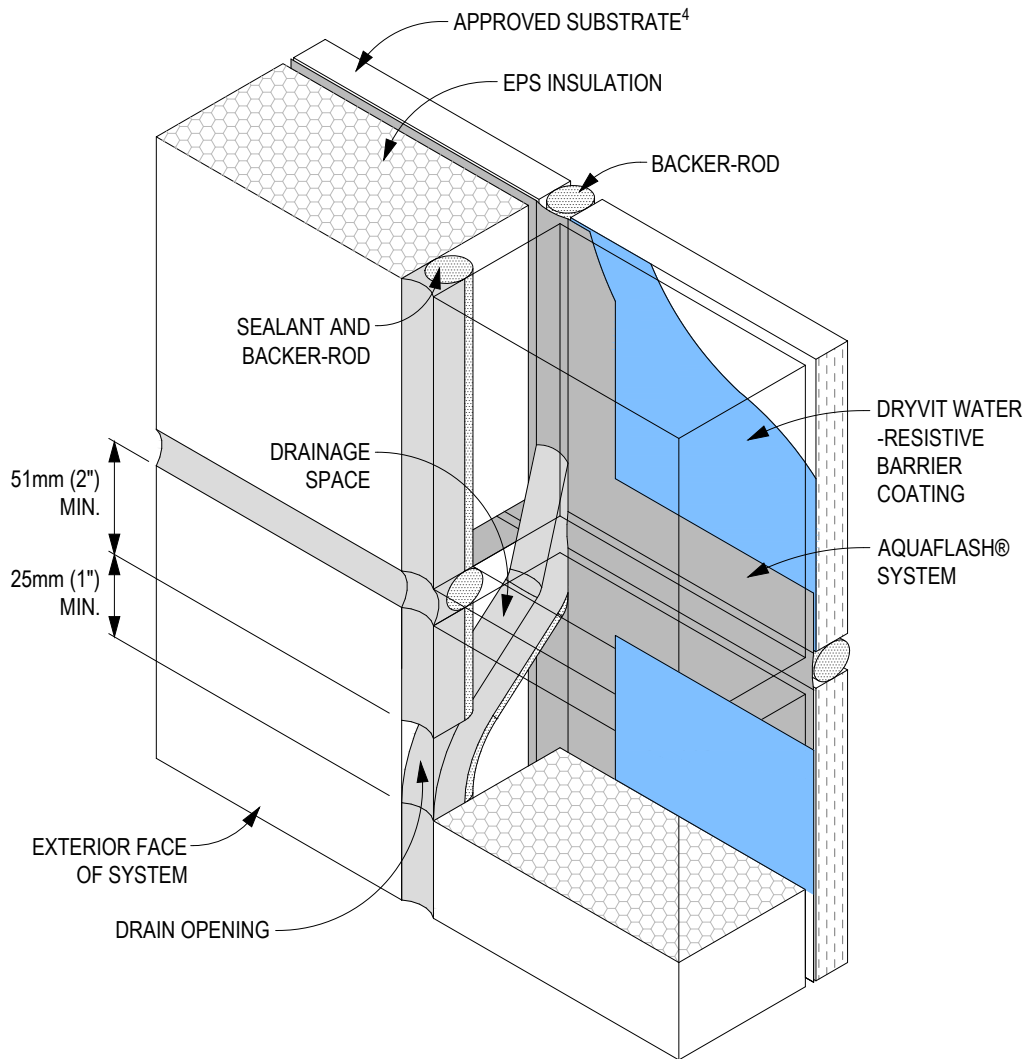
www.tremcocpg.com

File Name:

OMD.18



Construction Products Group



NOTES:

1. THESE DETAILS APPLY TO BOTH OUTSULATION MD AND OUTSULATION MD (NC). OUTSULATION® MD (NC) REQUIRES THE USE OF PRIMUS® DM OR GENESIS™ DM AS THE BASE COAT/ADHESIVE.
2. DRYVIT RECOMMENDS THAT GROUND FLOOR APPLICATIONS AND ALL FACADES EXPOSED TO ABNORMAL STRESS, HIGH TRAFFIC, OR DELIBERATE IMPACT HAVE THE BASE COAT REINFORCED WITH PANZER® 15 OR 20 MESH PRIOR TO STANDARD MESH. LOCATION OF HIGH IMPACT ZONES SHOULD BE INDICATED IN CONTRACT DRAWINGS.
3. DRYVIT DEMANDIT™ OR COLOR PRIME™ ON SURFACES TO RECEIVE SEALANT.
4. ALIGNMENT OF VERTICAL GROOVES NOT REQUIRED.

This detail is for general informational purposes, only. The project design professional determines, in its sole discretion, whether this detail or a functionally equivalent detail is best suited for the project with respect to any architecture, engineering, and design requirements, including any local building code requirements. If this document is not reviewed and the product is not approved for use by a licensed design professional, the customer agrees that the detail may contain substantive flaws requiring correction, and hereby releases Tremco CPG Inc. from any and all liability related to the design and installation of the product. This detail is subject to change without notice. Contact Tremco to ensure you have the most recent version.

Outsulation® MD (NC)

Detail: Two-Stage Sealant Joints

File Name:

Drawn by:

Checked by: AS

Scale: NTS

OMD.19

Revision #: 06

Revised by: KAB

Date: 8/14/2024

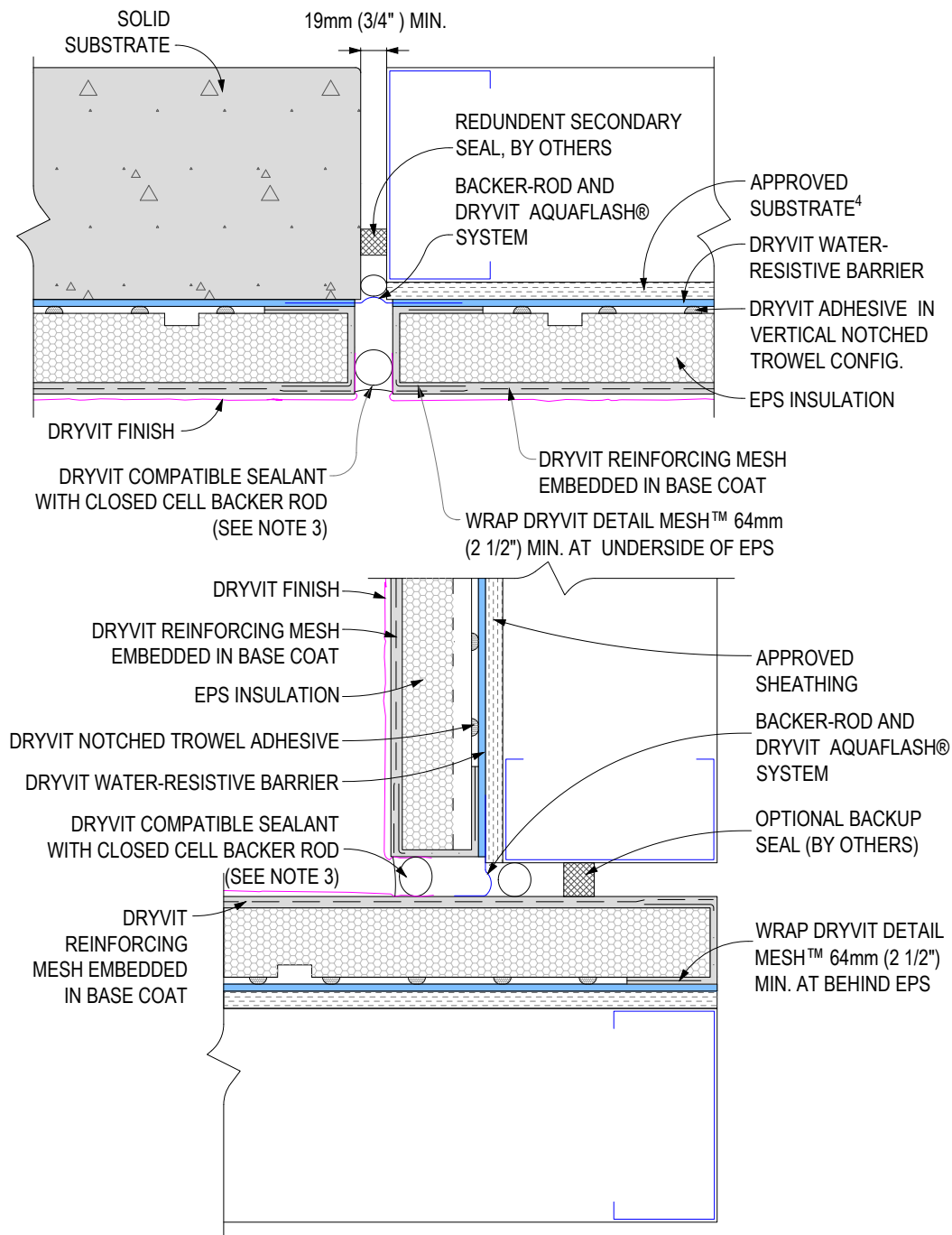
www.tremcocpg.com



Dryvit Technical Support: 800-556-7752



Construction Products Group



NOTES:

1. THESE DETAILS APPLY TO BOTH OUTSULATION MD AND OUTSULATION MD (NC). OUTSULATION® MD (NC) REQUIRES THE USE OF PRIMUS® DM OR GENESIS™ DM AS THE BASE COAT/ADHESIVE.
2. DRYVIT RECOMMENDS THAT GROUND FLOOR APPLICATIONS AND ALL FACADES EXPOSED TO ABNORMAL STRESS, HIGH TRAFFIC, OR DELIBERATE IMPACT HAVE THE BASE COAT REINFORCED WITH PANZER® 15 OR 20 MESH PRIOR TO STANDARD MESH. LOCATION OF HIGH IMPACT ZONES SHOULD BE INDICATED IN CONTRACT DRAWINGS.
3. DRYVIT DEMANDIT™ OR COLOR PRIME™ ON SURFACES TO RECEIVE SEALANT.
4. ALIGNMENT OF VERTICAL GROOVES NOT REQUIRED.

This detail is for general informational purposes only. The project design professional determines, in its sole discretion, whether this detail or a functionally equivalent detail is best suited for the project with respect to any architecture, engineering, and design requirements, including any local building code requirements. If this document is not reviewed and the product is not approved for use by a licensed design professional, the customer agrees that the detail may contain substantive flaws requiring correction, and hereby releases Tremco CPG Inc. from any and all liability related to the design and installation of the product. This detail is subject to change without notice. Contact Tremco to ensure you have the most recent version.

Outsulation® MD (NC)

Detail: Structural Expansion Joints

File Name:

Drawn by:

Checked by: AS

Scale: NTS

OMD.20

Revision #: 06

Revised by: KAB

Date: 8/14/2024

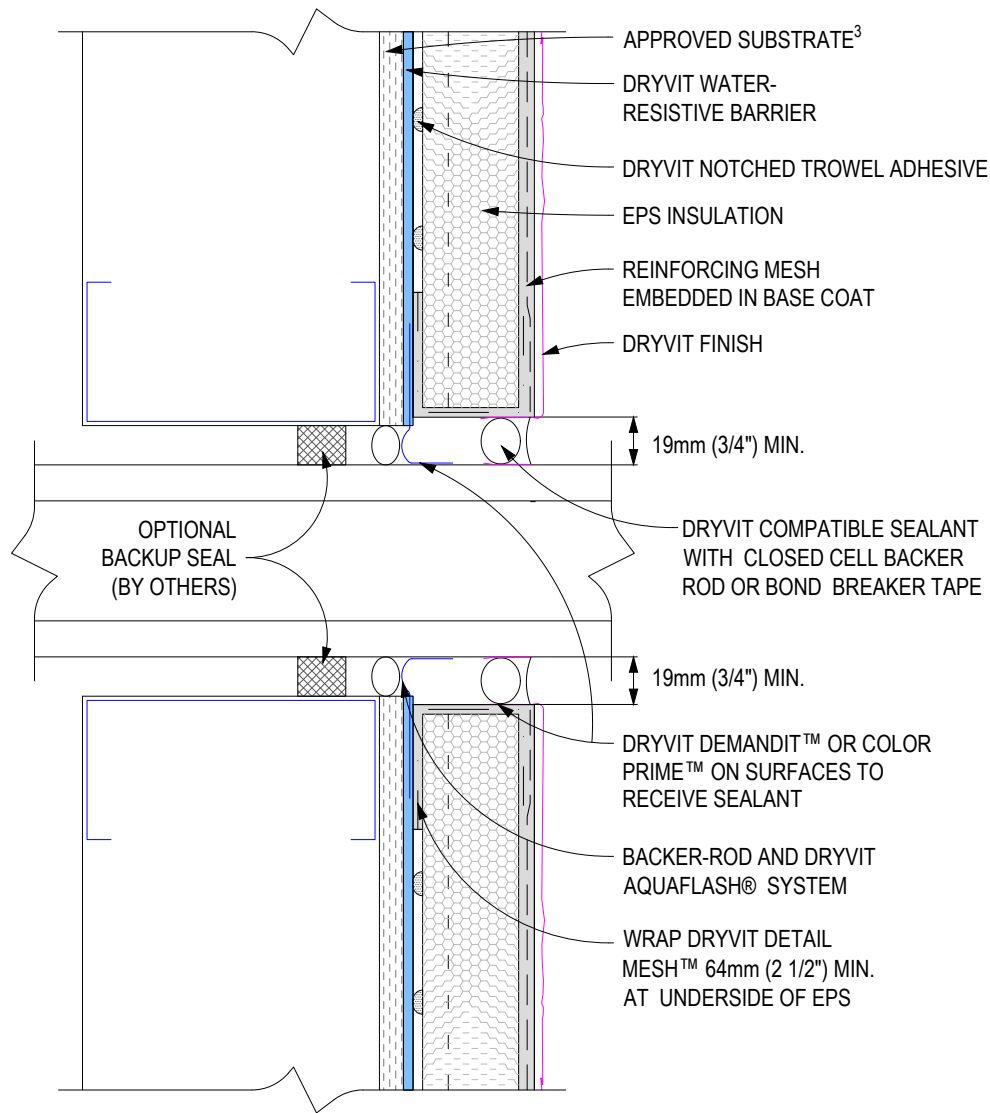
www.tremcocpg.com



Dryvit Technical Support: 800-556-7752



Construction Products Group



NOTES:

1. THESE DETAILS APPLY TO BOTH OUTSULATION MD AND OUTSULATION MD (NC). OUTSULATION® MD (NC) REQUIRES THE USE OF PRIMUS® DM OR GENESIS™ DM AS THE BASE COAT/ADHESIVE.
2. DRYVIT RECOMMENDS THAT GROUND FLOOR APPLICATIONS AND ALL FACADES EXPOSED TO ABNORMAL STRESS, HIGH TRAFFIC, OR DELIBERATE IMPACT HAVE THE BASE COAT REINFORCED WITH PANZER® 15 OR 20 MESH PRIOR TO STANDARD MESH. LOCATION OF HIGH IMPACT ZONES SHOULD BE INDICATED IN CONTRACT DRAWINGS.
3. ALIGNMENT OF VERTICAL GROOVES NOT REQUIRED.

This detail is for general informational purposes only. The project design professional determines, in its sole discretion, whether this detail or a functionally equivalent detail is best suited for the project with respect to any architecture, engineering, and design requirements, including any local building code requirements. If this document is not reviewed and the product is not approved for use by a licensed design professional, the customer agrees that the detail may contain substantive flaws requiring correction, and hereby releases Tremco CPG Inc. from any and all liability related to the design and installation of the product. This detail is subject to change without notice. Contact Tremco to ensure you have the most recent version.

Outsulation® MD (NC)

Detail: Penetrations - Cross Section

File Name:

Drawn by:

Checked by: AS

Scale: NTS

OMD.21

Revision #: 06

Revised by: KAB

Date: 8/14/2024

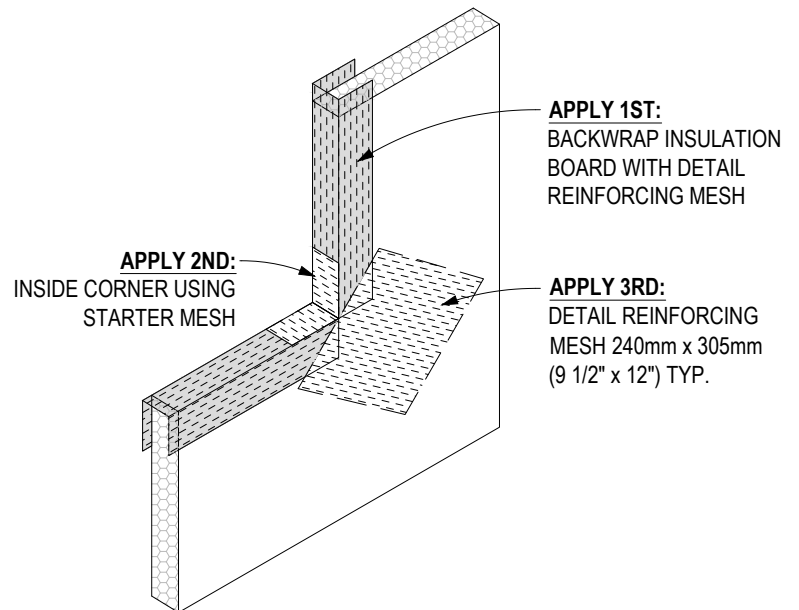
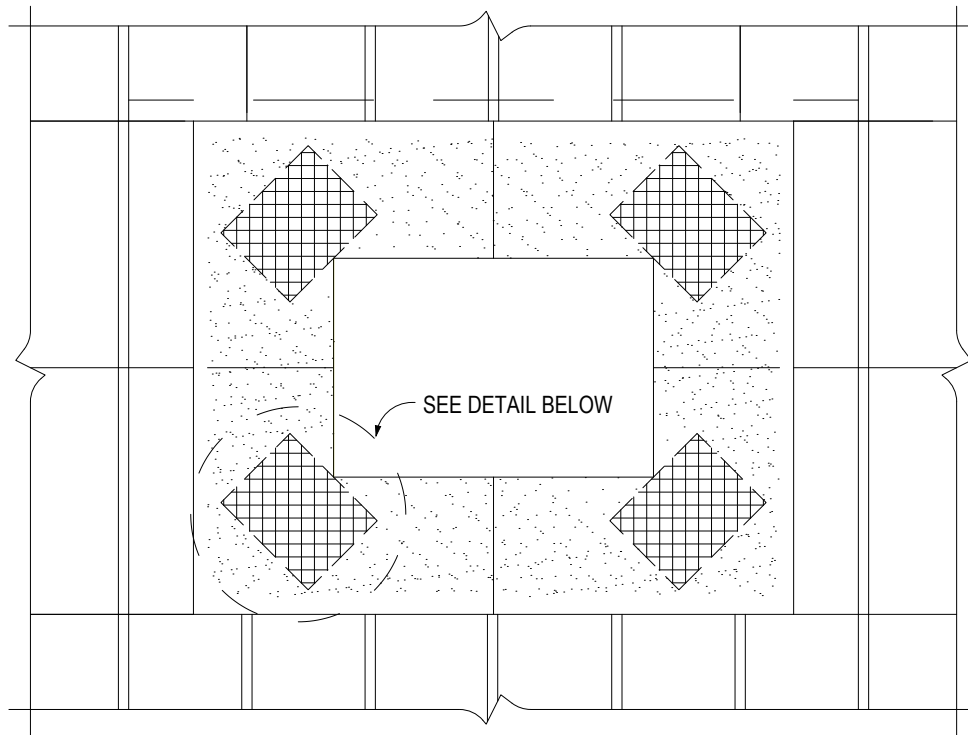
www.tremcocpg.com



Dryvit Technical Support: 800-556-7752



Construction Products Group



INSULATION LAYOUT - OPENINGS

NOTES:

1. THESE DETAILS APPLY TO BOTH OUTSULATION MD AND OUTSULATION MD (NC). OUTSULATION® MD (NC) REQUIRES THE USE OF PRIMUS® DM OR GENESIS™ DM AS THE BASE COAT/ADHESIVE.
2. DRYVIT RECOMMENDS THAT GROUND FLOOR APPLICATIONS AND ALL FACADES EXPOSED TO ABNORMAL STRESS, HIGH TRAFFIC, OR DELIBERATE IMPACT HAVE THE BASE COAT REINFORCED WITH PANZER® 15 OR 20 MESH PRIOR TO STANDARD MESH. LOCATION OF HIGH IMPACT ZONES SHOULD BE INDICATED IN CONTRACT DRAWINGS.
3. ALIGNMENT OF VERTICAL GROOVES NOT REQUIRED.

This detail is for general informational purposes, only. The project design professional determines, in its sole discretion, whether this detail or a functionally equivalent detail is best suited for the project with respect to any architecture, engineering, and design requirements, including any local building code requirements. If this document is not reviewed and the product is not approved for use by a licensed design professional, the customer agrees that the detail may contain substantive flaws requiring correction, and hereby releases Tremco CPG Inc. from any and all liability related to the design and installation of the product. This detail is subject to change without notice. Contact Tremco to ensure you have the most recent version.

Outsulation® MD (NC)

Detail: Insulation Layout - Openings

File Name:

Drawn by:

Checked by: AS

Scale: NTS

OMD.22

Revision #: 06

Revised by: KAB

Date: 8/14/2024

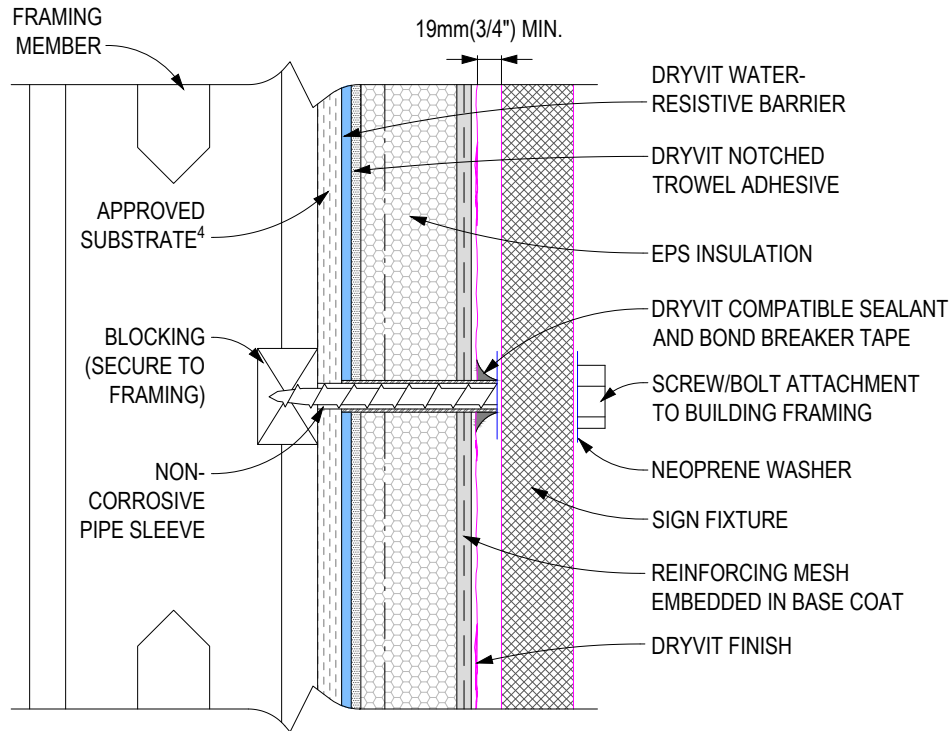
www.tremcocpg.com



Dryvit Technical Support: 800-556-7752



Construction Products Group



INSTALLATION INSTRUCTIONS:

1. PRE-DRILL THROUGH EIFS STOPPING AT WATER-RESISTIVE BARRIER (WRB).
2. CUT SLEEVE TO EQUAL DEPTH OF SYSTEM FROM WRB TO OUTSIDE FACE.
3. GUN NEUTRAL CURE SILICONE SEALANT INTO HOLE AND INSERT SLEEVE.
4. WHILE SEALANT IS WET, INSTALL FASTENER AND TOOL SEALANT AROUND EDGES AS SHOWN.

NOTES:

1. THESE DETAILS APPLY TO BOTH OUTSULATION MD AND OUTSULATION MD (NC). OUTSULATION® MD (NC) REQUIRES THE USE OF PRIMUS® DM OR GENESIS™ DM AS THE BASE COAT/ADHESIVE.
2. DRYVIT RECOMMENDS THAT GROUND FLOOR APPLICATIONS AND ALL FACADES EXPOSED TO ABNORMAL STRESS, HIGH TRAFFIC, OR DELIBERATE IMPACT HAVE THE BASE COAT REINFORCED WITH PANZER® 15 OR 20 MESH PRIOR TO STANDARD MESH. LOCATION OF HIGH IMPACT ZONES SHOULD BE INDICATED IN CONTRACT DRAWINGS.
3. ENTIRE PERIMETER OF PIPE SLEEVE IS CAULKED TO PREVENT WATER ENTRY INTO WALL.
4. ALIGNMENT OF VERTICAL GROOVES NOT REQUIRED.

This detail is for general informational purposes, only. The project design professional determines, in its sole discretion, whether this detail or a functionally equivalent detail is best suited for the project with respect to any architecture, engineering, and design requirements, including any local building code requirements. If this document is not reviewed and the product is not approved for use by a licensed design professional, the customer agrees that the detail may contain substantive flaws requiring correction, and hereby releases Tremco CPG Inc. from any and all liability related to the design and installation of the product. This detail is subject to change without notice. Contact Tremco to ensure you have the most recent version.

Outsulation® MD (NC)

Detail: Sign Attachment

File Name:

Drawn by:

Checked by: AS

Scale: NTS

OMD.23

Revision #: 06

Revised by: KAB

Date: 8/14/2024

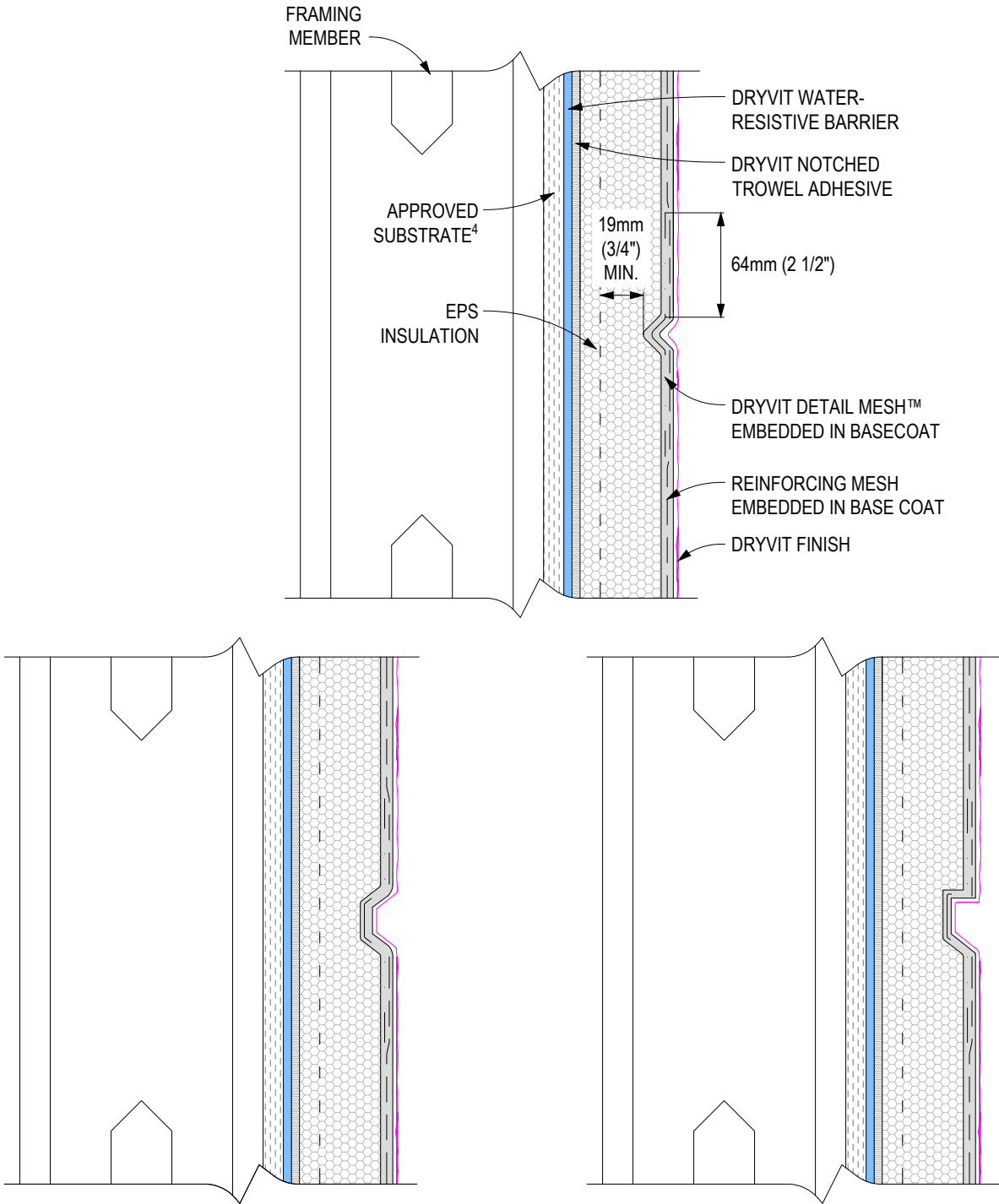
www.tremcocpg.com



Dryvit Technical Support: 800-556-7752



Construction Products Group



NOTES:

1. THESE DETAILS APPLY TO BOTH OUTSULATION MD AND OUTSULATION MD (NC). OUTSULATION® MD (NC) REQUIRES THE USE OF PRIMUS® DM OR GENESIS™ DM AS THE BASE COAT/ADHESIVE.
2. DRYVIT RECOMMENDS THAT GROUND FLOOR APPLICATIONS AND ALL FACADES EXPOSED TO ABNORMAL STRESS, HIGH TRAFFIC, OR DELIBERATE IMPACT HAVE THE BASE COAT REINFORCED WITH PANZER® 15 OR 20 MESH PRIOR TO STANDARD MESH. LOCATION OF HIGH IMPACT ZONES SHOULD BE INDICATED IN CONTRACT DRAWINGS.
3. BOTTOM ENDS OF REVEALS ARE TO BE SLOPED FOR POSITIVE DRAINAGE.
4. ALIGNMENT OF VERTICAL GROOVES NOT REQUIRED.

This detail is for general informational purposes only. The project design professional determines, in its sole discretion, whether this detail or a functionally equivalent detail is best suited for the project with respect to any architecture, engineering, and design requirements, including any local building code requirements. If this document is not reviewed and the product is not approved for use by a licensed design professional, the customer agrees that the detail may contain substantive flaws requiring correction, and hereby releases Tremco CPG Inc. from any and all liability related to the design and installation of the product. This detail is subject to change without notice. Contact Tremco to ensure you have the most recent version.

Outsulation® MD (NC)

Detail: Aesthetic Reveals

File Name:

Drawn by:

Checked by: AS

Scale: NTS

OMD.24

Revision #: 06

Revised by: KAB

Date: 8/14/2024

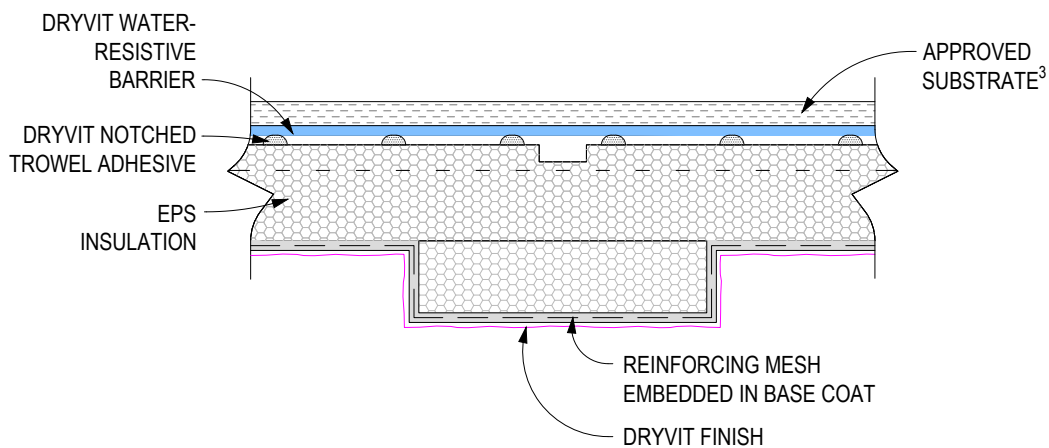
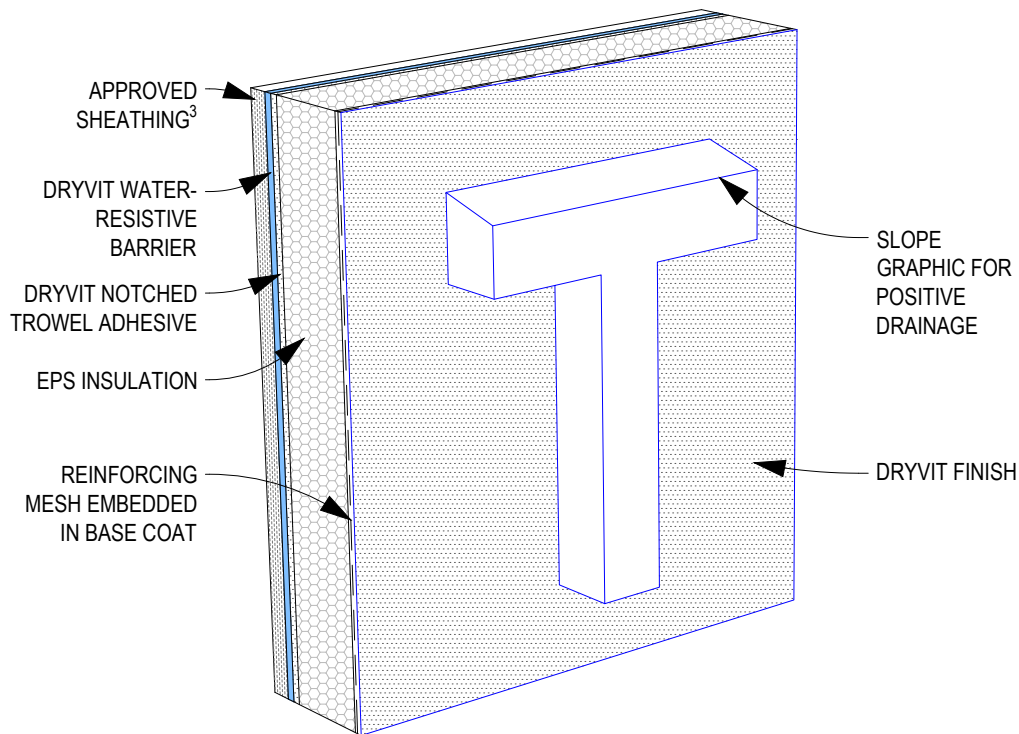


Dryvit Technical Support: 800-556-7752

www.tremcocpg.com



Construction Products Group



NOTES:

1. THESE DETAILS APPLY TO BOTH OUTSULATION MD AND OUTSULATION MD (NC). OUTSULATION® MD (NC) REQUIRES THE USE OF PRIMUS® DM OR GENESIS™ DM AS THE BASE COAT/ADHESIVE.
2. DRYVIT RECOMMENDS THAT GROUND FLOOR APPLICATIONS AND ALL FACADES EXPOSED TO ABNORMAL STRESS, HIGH TRAFFIC, OR DELIBERATE IMPACT HAVE THE BASE COAT REINFORCED WITH PANZER® 15 OR 20 MESH PRIOR TO STANDARD MESH. LOCATION OF HIGH IMPACT ZONES SHOULD BE INDICATED IN CONTRACT DRAWINGS.
3. ALIGNMENT OF VERTICAL GROOVES NOT REQUIRED.

This detail is for general informational purposes only. The project design professional determines, in its sole discretion, whether this detail or a functionally equivalent detail is best suited for the project with respect to any architecture, engineering, and design requirements, including any local building code requirements. If this document is not reviewed and the product is not approved for use by a licensed design professional, the customer agrees that the detail may contain substantive flaws requiring correction, and hereby releases Tremco CPG Inc. from any and all liability related to the design and installation of the product. This detail is subject to change without notice. Contact Tremco to ensure you have the most recent version.

Outsulation® MD (NC)

Detail: Projection Shapes

Drawn by:

Checked by: AS

Scale: NTS

Revision #: 06

Revised by: KAB

Date: 8/14/2024

File Name:

OMD.25

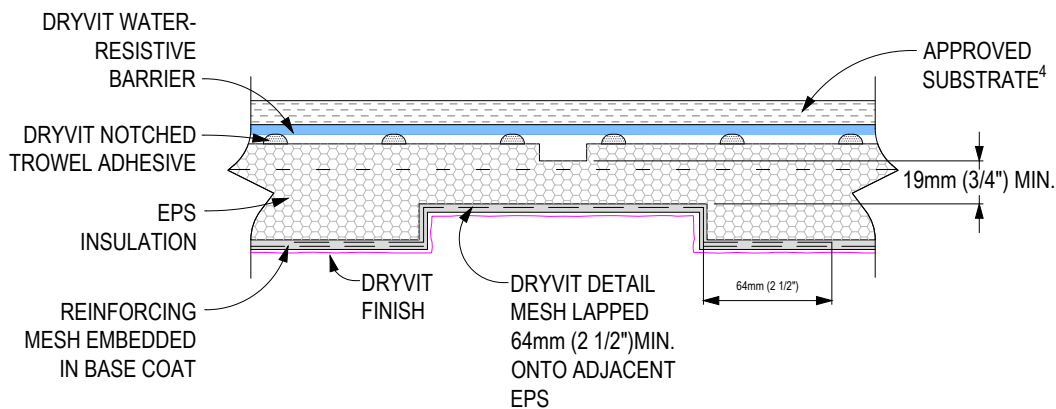
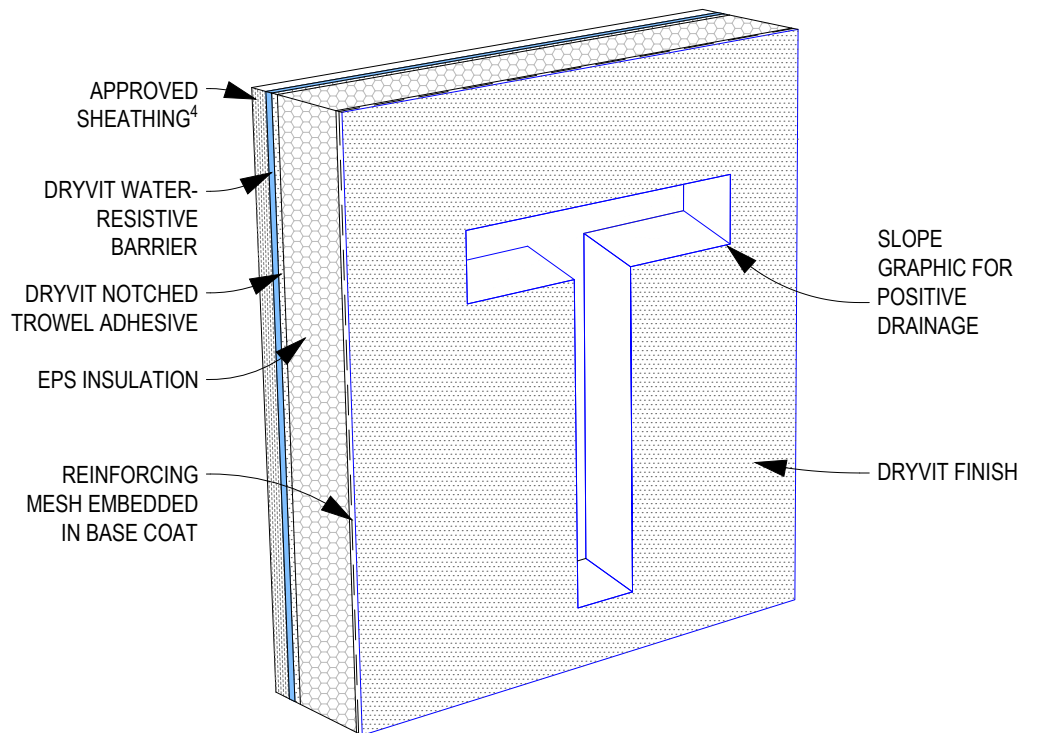


Dryvit Technical Support: 800-556-7752

www.tremcocpg.com



Construction Products Group





NOTES:

1. THESE DETAILS APPLY TO BOTH OUTSULATION MD AND OUTSULATION MD (NC). OUTSULATION® MD (NC) REQUIRES THE USE OF PRIMUS® DM OR GENESIS™ DM AS THE BASE COAT/ADHESIVE.
2. DRYVIT RECOMMENDS THAT GROUND FLOOR APPLICATIONS AND ALL FACADES EXPOSED TO ABNORMAL STRESS, HIGH TRAFFIC, OR DELIBERATE IMPACT HAVE THE BASE COAT REINFORCED WITH PANZER® 15 OR 20 MESH PRIOR TO STANDARD MESH. LOCATION OF HIGH IMPACT ZONES SHOULD BE INDICATED IN CONTRACT DRAWINGS.
3. ALIGNMENT OF VERTICAL GROOVES NOT REQUIRED.

This detail is for general informational purposes, only. The project design professional determines, in its sole discretion, whether this detail or a functionally equivalent detail is best suited for the project with respect to any architecture, engineering, and design requirements, including any local building code requirements. If this document is not reviewed and the product is not approved for use by a licensed design professional, the customer agrees that the detail may contain substantive flaws requiring correction, and hereby releases Tremco CPG Inc. from any and all liability related to the design and installation of the product. This detail is subject to change without notice. Contact Tremco to ensure you have the most recent version.

Outsulation® MD (NC)

 <p>Dryvit Technical Support: 800-556-7752</p>	Detail: Recessed Reveals			File Name: OMD.26	 <p>Construction Products Group</p>
	Drawn by:	Checked by: AS	Scale: NTS		
	Revision #: 06	Revised by: KAB	Date: 8/14/2024		