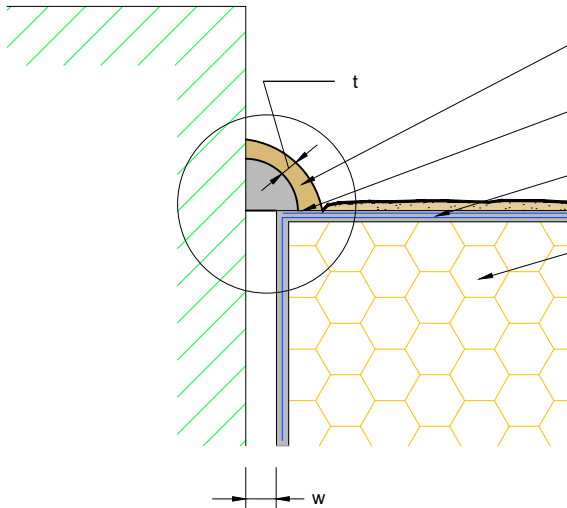
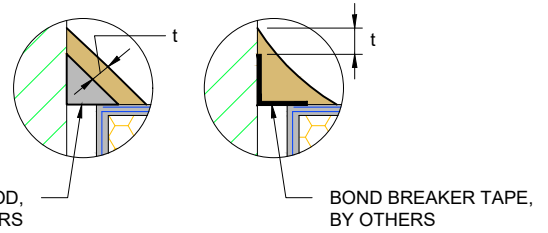


ANGLE BEAD



- APPROVED TREMCO CPG SEALANT OR APPROVED EQUIVALENT WITH QUARTER ROUND BACKER ROD, BY OTHERS (REFER TO OTHER OPTIONS BELOW)
- DRYVIT DEMANDIT® OR COLOR PRIME™ ON SURFACES TO RECEIVE SEALANT
- DRYVIT REINFORCING MESH EMBEDDED IN DRYVIT BASE COAT (SEE NOTE 3)
- EPS INSULATION BOARD

ANGLE BEAD BOND BREAKER OPTIONS



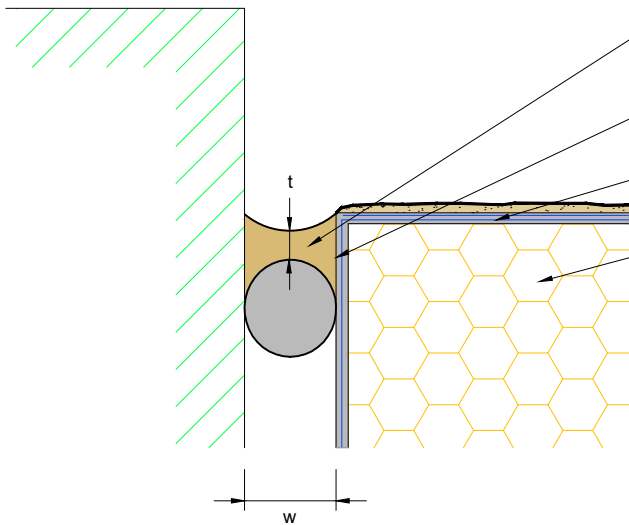
TRIANGULAR BACKER ROD, BY OTHERS

BOND BREAKER TAPE, BY OTHERS

FOR ANGLE BEADS:

- t = 1/4" (6.4 MM) MIN.
- w = SPECIFIED BY MANUFACTURER OF ABUTTING MATERIAL BUT NOT LESS THAN 1/8" (3.2 MM)

RECTANGULAR BEAD



- APPROVED TREMCO CPG SEALANT OR APPROVED EQUIVALENT WITH QUARTER ROUND BACKER ROD, BY OTHERS
- DRYVIT DEMANDIT® OR COLOR PRIME™ ON SURFACES TO RECEIVE SEALANT
- DRYVIT REINFORCING MESH EMBEDDED IN DRYVIT BASE COAT (SEE NOTE 3)
- EPS INSULATION BOARD

FOR RECTANGULAR BEADS:

- t = 1/4" (6.4 MM) MIN.
- w = 1/2" (12.7 MM) MIN.
- w/t = 2:1

NOTE:

1. WEATHER SEAL JOINTS SUCH AS AT WINDOW AND DOOR PERIMETERS CAN USE ANGLE OR OR RECTANGULAR BEADS. RECTANGULAR BEADS USED AS A WEATHER SEAL REQUIRE A MINIMUM 1/2" (13 MM) WIDTH.
2. EXPANSION JOINTS SHALL USE RECTANGULAR BEADS AND BE DESIGNED FOR MINIMUM FOUR TIMES THE ANTICIPATED MOVEMENT, BUT NOT LESS THAN 3/4" (19 MM).
3. DRYVIT GENESIS® OR GENESIS DM BASE COAT IS REQUIRED FOR MECHANICALLY FASTENED SYSTEMS 1-3.

The architecture, engineering, and design of the project using the Dryvit and Tremco products are the responsibility of the project's design professional. All products and systems must comply with local building codes and standards. This detail is for general information and guidance only and Dryvit and Tremco specifically disclaims any liability for the use of this detail. The project design professional determines, in its sole discretion, whether this detail or a functionally equivalent detail is best suited for the project. This detail is subject to change without notice. Contact Dryvit and Tremco to ensure you have the most recent version.

Outsulation® RMD System™



Dryvit Technical Support: 800-556-7752

Detail: Sealant Configuration Options^{1,2}

Drawn by: HDE

Checked by: KK

Scale: NTS

Date: 5/19/2023

File Name:

O-RMD 44



Construction Products Group

www.tremcocpg.com