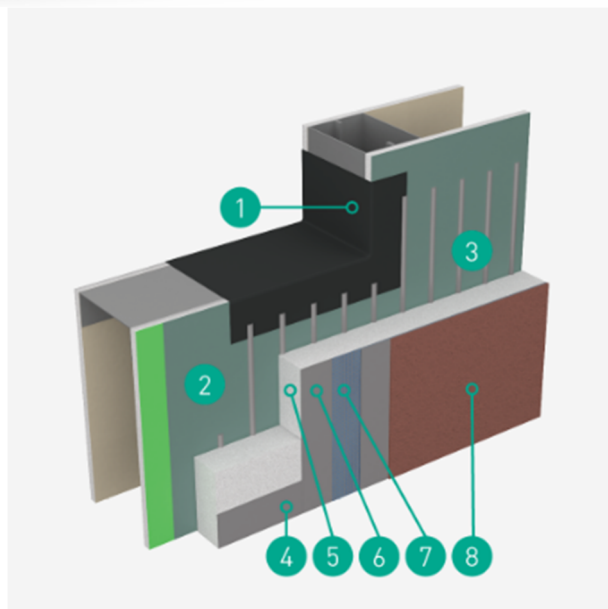




NFPA 285 Compliance Summary

Outsulation® Plus MD

An Exterior Insulation and Finish System (EIFS) with moisture drainage that incorporates continuous insulation and an air/water-resistive barrier



System Description

Step into the future of construction with Dryvit Outsulation® Plus MD, the top-of-the-line exterior insulation and finish system which provides high performance insulation in addition to maximum moisture drainage built into the wall cavity to protect the life of the building. With an industry-leading warranty and endless color, texture, and specialty finish choices, Outsulation® Plus MD is the perfect choice for a building envelope that combines function and beauty.

NFPA 285 Compliance Documentation

ICC-ES Evaluation Report ESR 1543

The Outsulation Plus MD System is an exterior insulation and finish system (EIFS) complying with 2021 & 2018 IBC Section 1407 (2015, 2012 and 2009 IBC Section 1408) and IRC Section R703.9. The system complies as an EIFS with drainage in accordance with 2021 & 2018 IBC Section 1407.4.1 (2015, 2012 and 2009 IBC Section 1408.4.1) and IRC Section R703.9.

Intertek - Report Number: 3178745SAT-002_Rev.1

Report of Testing Outsulation Plus Exterior Insulation Finish System (EIFS) Utilizing 13" EPS for compliance with the applicable requirements of the following criteria: NFPA 285 Standard Test Method for Evaluation of Fire Propagation Characteristics of Exterior Non-Bearing Wall Assemblies Containing Combustible Components.

The architecture, engineering, and design of the project using the Dryvit products is the responsibility of the project's design professional. All systems must comply with local building codes and standards. This detail is for general information and guidance only and Dryvit specifically disclaims any liability for the use of this detail and for the architecture, design, engineering, or workmanship of any project. The project design professional determines, in its sole discretion, whether this detail or a functionally equivalent detail is best suited for the project. Use of a functionally equivalent detail does not violate Dryvit's warranty. This detail is subject to change without notice. Contact Dryvit to ensure you have the most recent version.

- | | |
|-----|---|
| 1 | Flashing |
| 2 | Dryvit air/water-resistive barrier coating used in conjunction with Dryvit flashing material |
| 3 | Dryvit adhesive in vertical notched trowel configuration applied to back of EPS: Genesis/Primus |
| 4 | Drainage |
| 5 | EPS Insulation Boards |
| 6 | Dryvit reinforced Basecoat |
| 7 | Dryvit reinforcing mesh |
| 8 | Dryvit Finish |
| [9] | Compatible with Nudura Insulated Concrete forms (ICF) |

Tremco Construction Products Group (CPG) brings together Tremco CPG Inc. and its Dryvit and Nudura brands; Willseal; Prebuck LLC; Tremco Barrier Solutions, Inc.; Weatherproofing Technologies, Inc. and its Pure Air Control Services and Canam Building Envelope Specialists offerings; and Weatherproofing Technologies Canada, Inc.



dryvit.com | 800.556.7752



Construction Products Group

3735 Green Rd. | Beachwood, OH 44122
800.321.7906 | tremcocpg.com