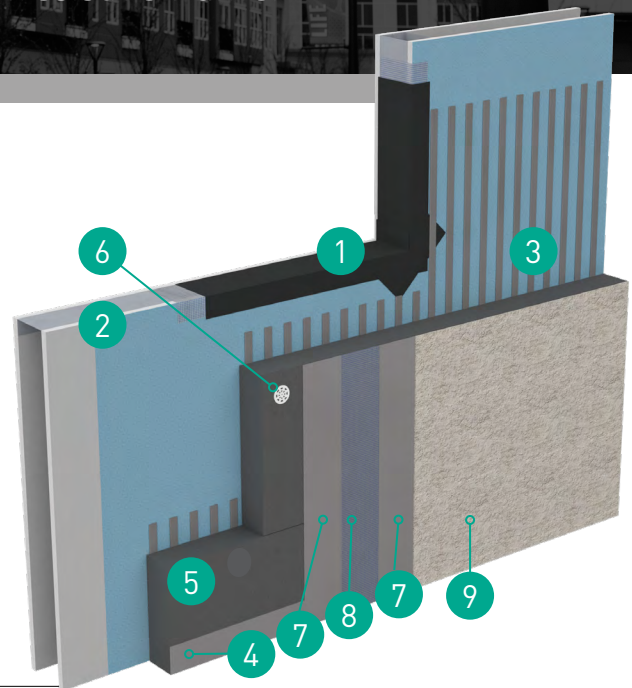


OUTSULATION® PLUS MD

An exterior wall insulation and finish system with moisture drainage that incorporates GPS insulation and an air/water-resistive barrier

System Overview

Outsulation® Plus MD with GPS expands upon the proven weatherability and insulating qualities of Outsulation by adding a second line of defense against air, moisture and weather. This is accomplished with a coating of a Dryvit/Tremco® approved air/water resistive barrier and accessories at all sills of openings. Outsulation Plus MD goes one step further through the use of adhesive channels to provide moisture drainage. These channels work in tandem with either of two system termination options, resulting in an efficient and economical system that is easy to install.



Why GPS?

Graphite Polystyrene (GPS) has a higher R-value than standard foam boards due to the added graphite particles that reflect radiant heat — resulting in better thermal insulation and energy efficiency while still maintaining similar installation properties to EPS.

GPS provides more insulation capacity per inch of thickness compared to standard EPS. This is why rigid GPS thermal panels are up to 20% thinner than other rigid insulations.

Features & Benefits

- Built-in Moisture Drainage and Drainage Track
- High-Performance GPS Exterior Insulation
- Reinforced Base Coat for Extra Durability
- Incorporated Air/Water-Resistive Barrier
- Waterproof Flashing Material
- Market-Leading Warranty Options

System Components

1	Flashing
2	Air/Water-Resistive Barrier
3	Dryvit Adhesive
4	Drainage
5	Graphite Polystyrene (EPS) Insulation Boards
6	Mechanical Attachment
7	Dryvit Reinforced Base Coat
8	Reinforcing Mesh
9	Dryvit Finish

