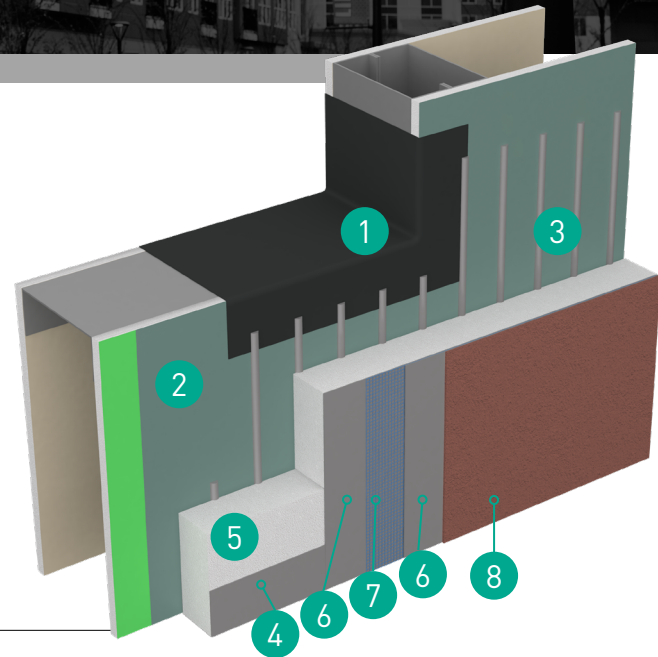


# OUTSULATION® PLUS MD

An exterior wall insulation and finish system with moisture drainage that incorporates continuous insulation and an air/water-resistive barrier

## System Overview

Dryvit® offers a family of performance-based systems that allows architects and owners to meet the specific demands of today's energy codes, such as continuous insulation and an air/water-resistive barrier. Dryvit's original Outsulation® System has been installed on over 500,000 buildings worldwide. Due to the increased demands for a wall system to be able to drain away incidental moisture, the Outsulation concept has grown into a family of related systems, each building upon the other to achieve specific performance goals.



## Efficient and Economical

Outsulation Plus MD expands upon the proven weatherability and insulating qualities of Outsulation by adding a second line of defense against air, moisture and weather. This is accomplished with a coating of a Dryvit/Tremco® approved air/water resistive barrier and accessories at all sills of openings. Outsulation Plus MD goes one step further through the use of adhesive channels to provide moisture drainage. These channels work in tandem with either of two system termination options, resulting in an efficient and economical system that is easy to install.

## Features & Benefits

- Built-in Moisture Drainage and Drainage Track
- High-Performance EPS Exterior Insulation
- Reinforced Base Coat for Extra Durability
- Incorporated Air/Water-Resistive Barrier
- Waterproof Flashing Material
- Market-Leading Warranty Options

## System Components

1	Flashing
2	Air/Water-Resistive Barrier
3	Dryvift Adhesive
4	Drainage
5	Expanded Polystyrene (EPS) Insulation Boards
6	Dryvit Reinforced Base Coat
7	Reinforcing Mesh
8	Dryvit Finish
9	Compatible with Nudura Insulated Concrete Forms (ICF)

