

StucCoat 3-Coat with Continuous Insulation

Three-Coat Portland Cement Plaster Applied to
Metal or Wood Framed Walls with Continuous Insulation

DS1032

StucCoat 3-Coat with Continuous Insulation Installation Details

Table of Contents

Detail

STUCCOAT 3-COAT SYSTEM CUTAWAY	SCTC-CI-01
FLANGED WINDOW HEAD	SCTC-CI-02
FLANGED WINDOW JAMB	SCTC-CI-03
FLANGED WINDOW SILL	SCTC-CI-04
STOREFRONT WINDOW HEAD	SCTC-CI-05
STOREFRONT WINDOW JAMB	SCTC-CI-06
STOREFRONT WINDOW SILL	SCTC-CI-07
SLOPED WINDOW SILL	SCTC-CI-08
OUTSIDE CORNER	SCTC-CI-09
INSIDE CORNER	SCTC-CI-10
INSIDE CORNER CONTROL JOINT	SCTC-CI-11
SOFFIT/FASCIA INTERSECTION	SCTC-CI-12
EXPANSION JOINT INTERSECTION	SCTC-CI-13
PIPE RAILING ATTACHMENT	SCTC-CI-14
PENETRATION	SCTC-CI-15
TERMINATION AT CONCRETE FOUNDATION	SCTC-CI-16
TERMINATION AT ROOF/WALL INTERSECTION	SCTC-CI-17
TERMINATION AT ROOF/WALL INTERSECTION -FLAT ROOF	SCTC-CI-18
TERMINATION AT ROOF/WALL INTERSECTION -SHINGLED ROOF	SCTC-CI-19
TERMINATION AT PARAPET/WALL INTERSECTION	SCTC-CI-20
PARAPET FLASHING	SCTC-CI-21
EPS CORNICE	SCTC-CI-22
HORIZONTAL FLASHING AND EXPANSION JOINT	SCTC-CI-23
HORIZONTAL EXPANSION JOINT	SCTC-CI-24
TWO PIECE HORIZONTAL EXPANSION JOINT	SCTC-CI-25
HORIZONTAL TERMINATION AT BRICK WALL	SCTC-CI-26
HORIZONTAL TERMINATION AT LAP SIDING	SCTC-CI-27

NOTE:



TREMCO CPG MAKES NO REPRESENTATION REGARDING CONFORMITY OF ITS SUGGESTIONS TO MODEL BUILDING CODES, ENGINEERING CRITERIA, SPECIFIC APPLICATIONS, OR PROJECT LOCATIONS. ALL COMPONENTS INDICATED IN ILLUSTRATIONS, AS WELL AS OTHERS THAT MAY BE REQUIRED FOR THE INTEGRITY OF THE SYSTEM SHALL BE DESIGNED, DETAILED, AND ENGINEERED BY REPRESENTATIVES OF THE ARCHITECT, OWNER, OR CONTRACTOR TO BE IN CONFORMANCE WITH MODEL CODES, ARCHITECTURAL, AND ENGINEERING REQUIREMENTS PERTAINING TO SPECIFIC BUILDING PROJECTS.

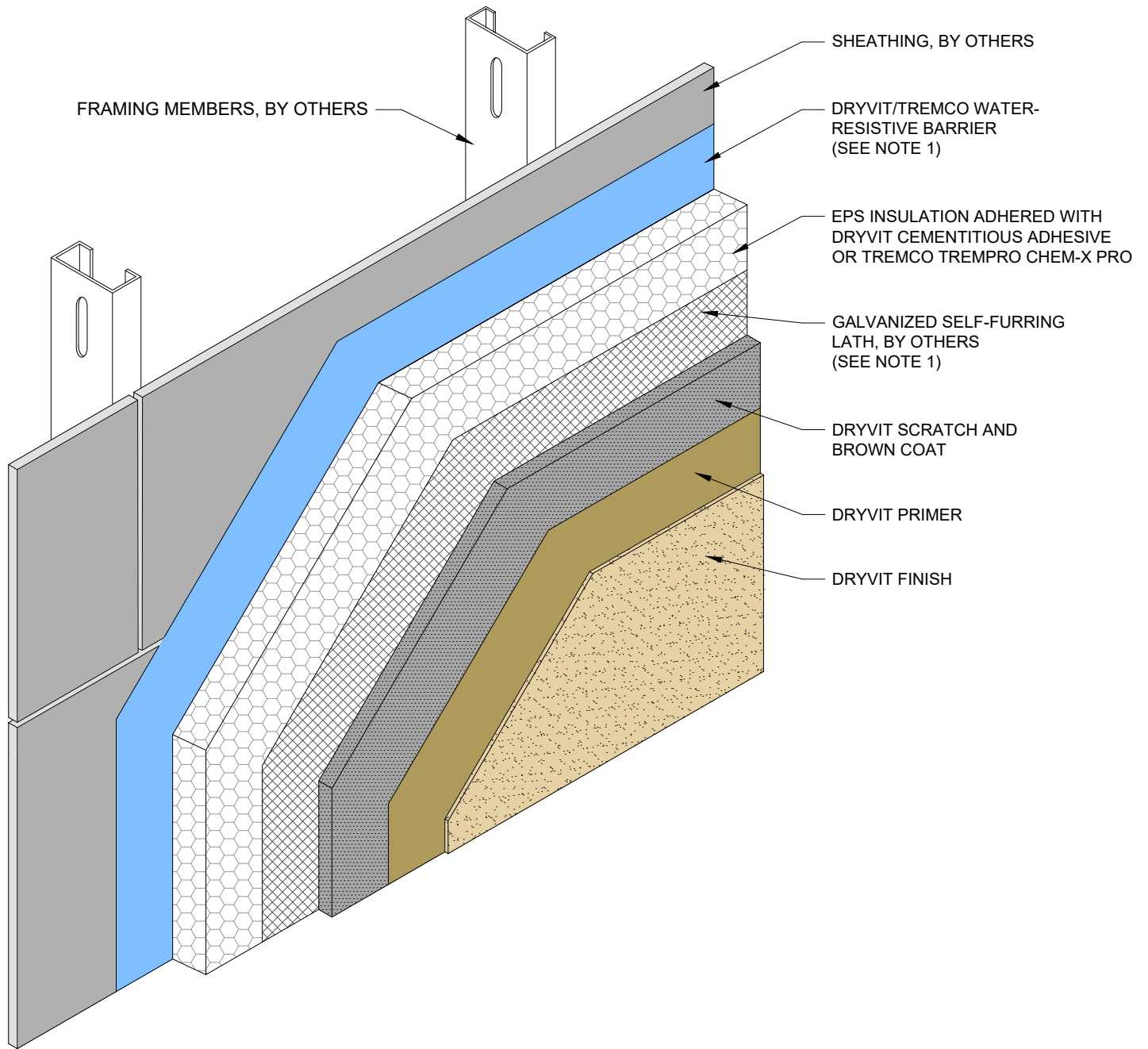
TREMCO CPG MAKES NO WARRANTY, EXPRESSED OR IMPLIED, AS TO THE ARCHITECTURAL DESIGN, ENGINEERING, OR WORKMANSHIP OF PROJECTS UTILIZING TREMCO CPG SYSTEMS OR PRODUCTS.

THE LIABILITIES OF TREMCO CPG SHALL BE AS STATED IN THE STANDARD WARRANTY. CONTACT TREMCO CPG FOR A FULL AND COMPLETE COPY OF THE WARRANTY.

This detail is for general informational purposes only. The project design professional determines, in its sole discretion, whether this detail or a functionally equivalent detail is best suited for the project with respect to any architecture, engineering, and design requirements, including any local building code requirements. If this document is not reviewed and the product is not approved for use by a licensed design professional, the customer agrees that the detail may contain substantive flaws requiring correction, and hereby releases Tremco CPG Inc. from any and all liability related to the design and installation of the product. This detail is subject to change without notice. Contact Tremco to ensure you have the most recent version.

StucCoat 3-Coat with Continuous Insulation

 Dryvit Technical Support: 800-556-7752	Detail: Table of Contents			File Name:	 TOC Construction Products Group
	Drawn by: KAB	Checked by: AL	Scale: NTS		
	Revision #: 00	Revised by: -	Date: 1/17/2025		
<small>www.tremcocpg.com</small>					



FRAMING MEMBERS, BY OTHERS

SHEATHING, BY OTHERS

DRYVIT/TREMCO WATER-RESISTIVE BARRIER (SEE NOTE 1)

EPS INSULATION ADHERED WITH DRYVIT CEMENTITIOUS ADHESIVE OR TREMCO TREMPRO CHEM-X PRO

GALVANIZED SELF-FURRING LATH, BY OTHERS (SEE NOTE 1)

DRYVIT SCRATCH AND BROWN COAT

DRYVIT PRIMER



DRYVIT FINISH

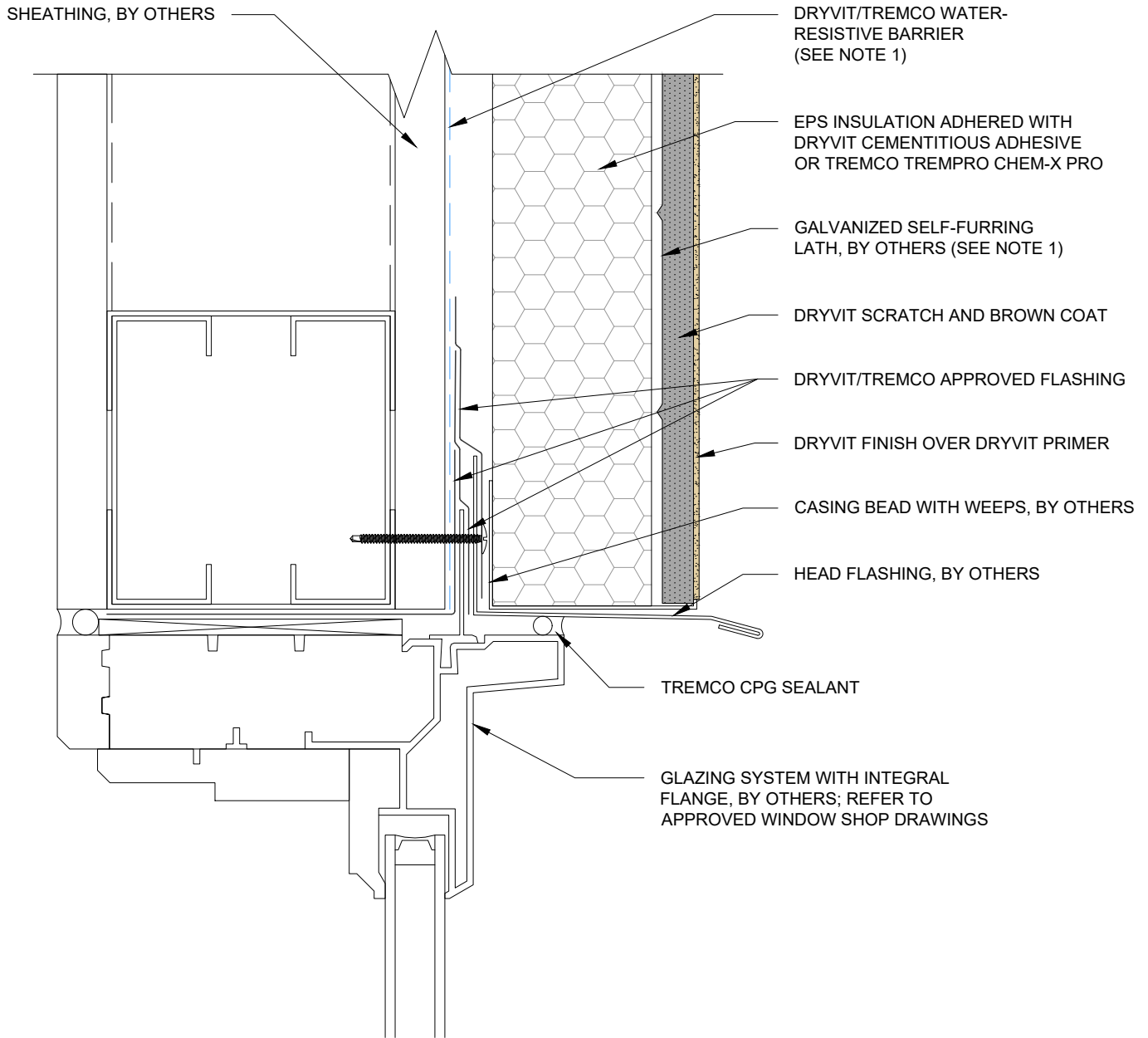
NOTES:

1. BUILDING CODES REQUIRE 2 LAYERS OVER WOOD BASED SUBSTRATES. COMPLY WITH ALL LOCAL CODE REQUIREMENTS.

This detail is for general informational purposes only. The project design professional determines, in its sole discretion, whether this detail or a functionally equivalent detail is best suited for the project with respect to any architecture, engineering, and design requirements, including any local building code requirements. If this document is not reviewed and the product is not approved for use by a licensed design professional, the customer agrees that the detail may contain substantive flaws requiring correction, and hereby releases Tremco CPG Inc. from any and all liability related to the design and installation of the product. This detail is subject to change without notice. Contact Tremco to ensure you have the most recent version.

StucCoat 3-Coat with Continuous Insulation



 Dryvit Technical Support: 800-556-7752	Detail: StucCoat 3-Coat with Continuous Insulation System Cutaway			File Name:	 Construction Products Group
	Drawn by: KAB	Checked by: AL	Scale: NTS	SCTC-CI-01	
	Revision #: 00	Revised by: -	Date: 1/17/2025		
<small>www.tremcpcpg.com</small>					

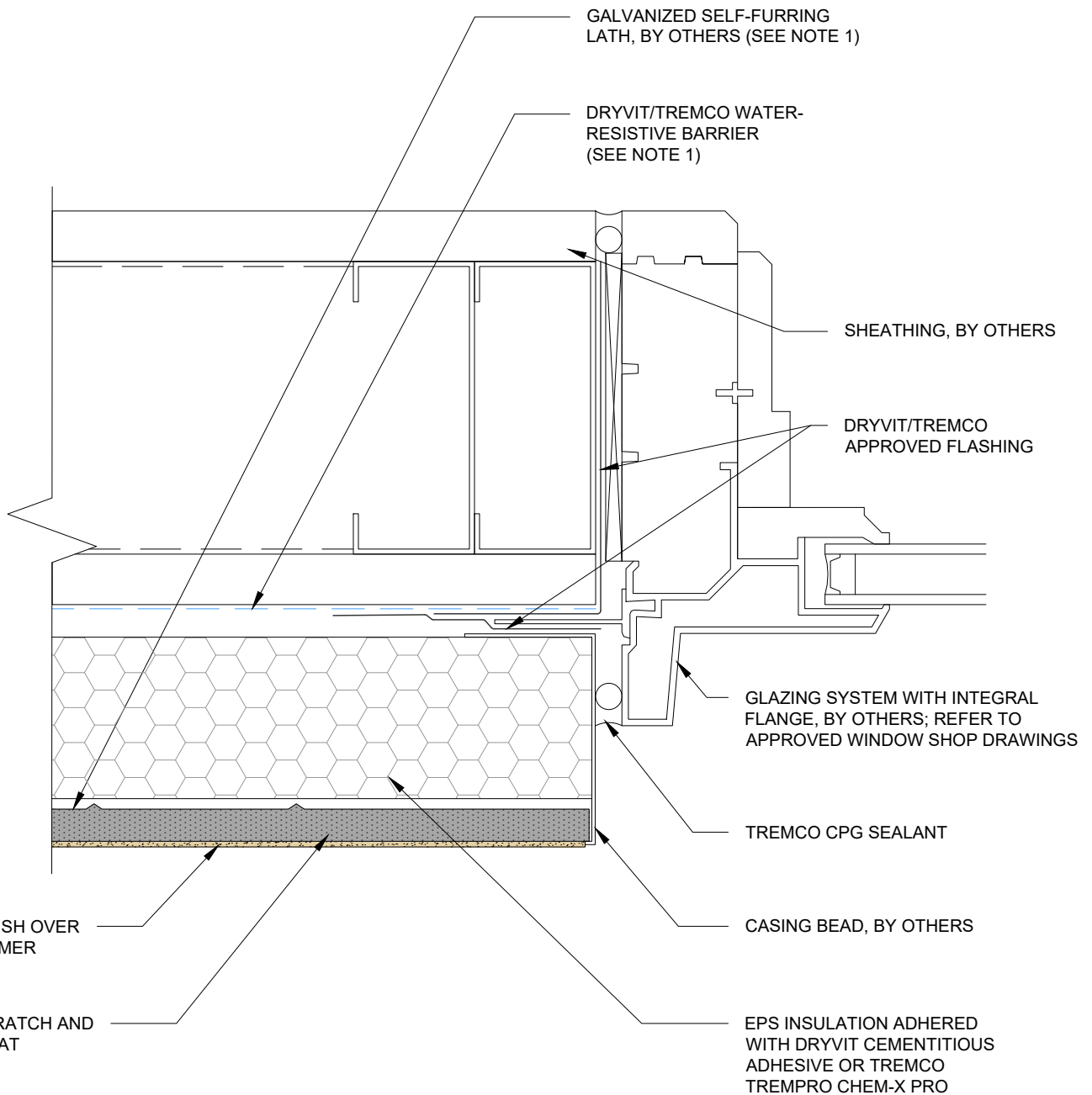


NOTES:
 1. BUILDING CODES REQUIRE 2 LAYERS OVER WOOD BASED SUBSTRATES. COMPLY WITH ALL LOCAL CODE REQUIREMENTS.

This detail is for general informational purposes, only. The project design professional determines, in its sole discretion, whether this detail or a functionally equivalent detail is best suited for the project with respect to any architecture, engineering, and design requirements, including any local building code requirements. If this document is not reviewed and the product is not approved for use by a licensed design professional, the customer agrees that the detail may contain substantive flaws requiring correction, and hereby releases Tremco CPG Inc. from any and all liability related to the design and installation of the product. This detail is subject to change without notice. Contact Tremco to ensure you have the most recent version.

StucCoat 3-Coat with Continuous Insulation



 Dryvit Technical Support: 800-556-7752	Detail: Flanged Window Head			File Name:	 Construction Products Group
	Drawn by: KAB	Checked by: AL	Scale: 6" = 1'-0"	SCTC-CI-02	
	Revision #: 00	Revised by: -	Date: 1/17/2025		
www.tremcocpg.com					

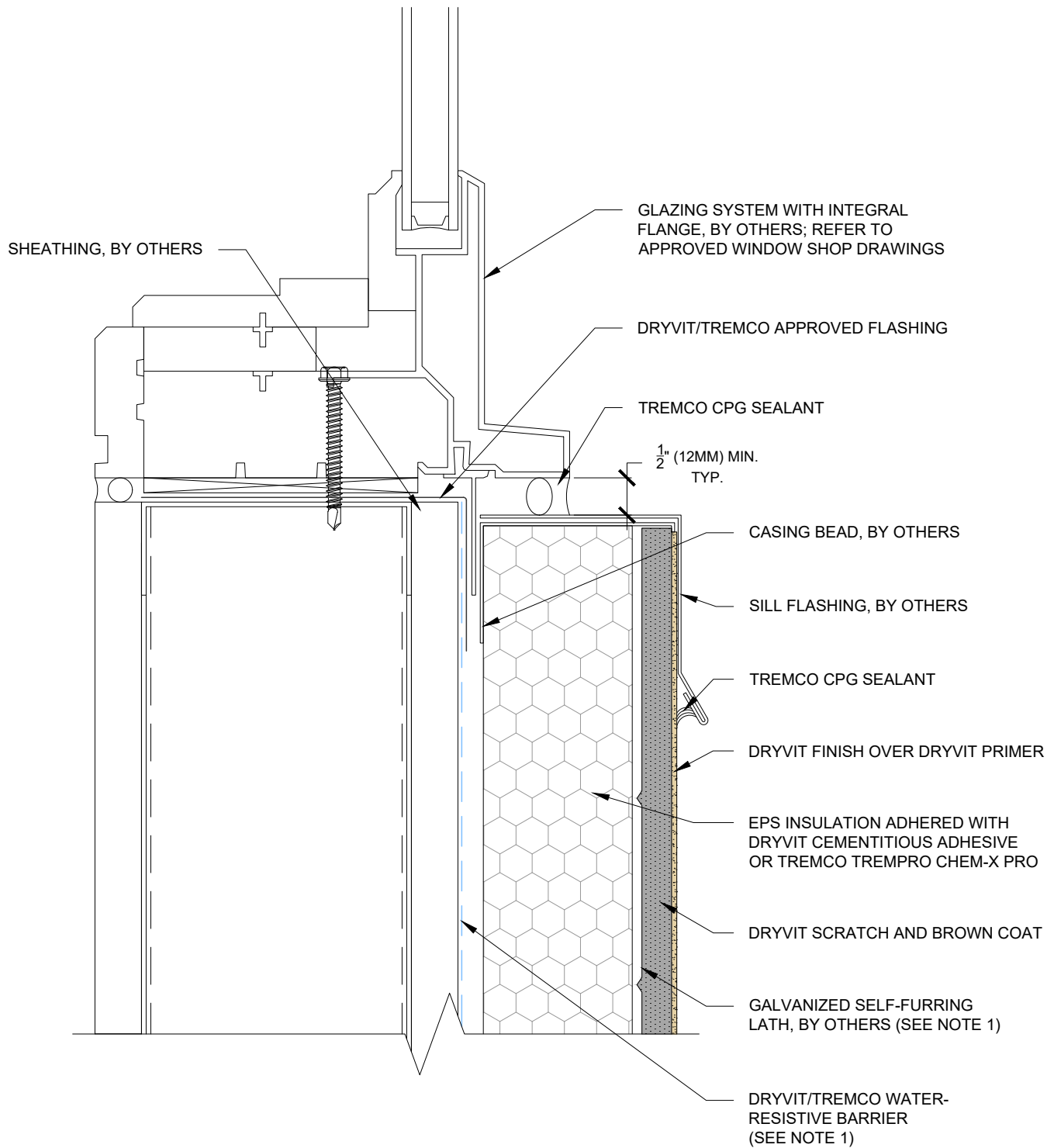


- NOTES:
 1. BUILDING CODES REQUIRE 2 LAYERS OVER WOOD BASED SUBSTRATES. COMPLY WITH ALL LOCAL CODE REQUIREMENTS.

This detail is for general informational purposes, only. The project design professional determines, in its sole discretion, whether this detail or a functionally equivalent detail is best suited for the project with respect to any architecture, engineering, and design requirements, including any local building code requirements. If this document is not reviewed and the product is not approved for use by a licensed design professional, the customer agrees that the detail may contain substantive flaws requiring correction, and hereby releases Tremco CPG Inc. from any and all liability related to the design and installation of the product. This detail is subject to change without notice. Contact Tremco to ensure you have the most recent version.

StucCoat 3-Coat with Continuous Insulation



 Dryvit Technical Support: 800-556-7752	Detail: Flanged Window Jamb			File Name:	 Construction Products Group
	Drawn by: KAB	Checked by: AL	Scale: 6" = 1'-0"	SCTC-CI-03	
	Revision #: 00	Revised by: -	Date: 1/17/2025		
www.tremcocpg.com					

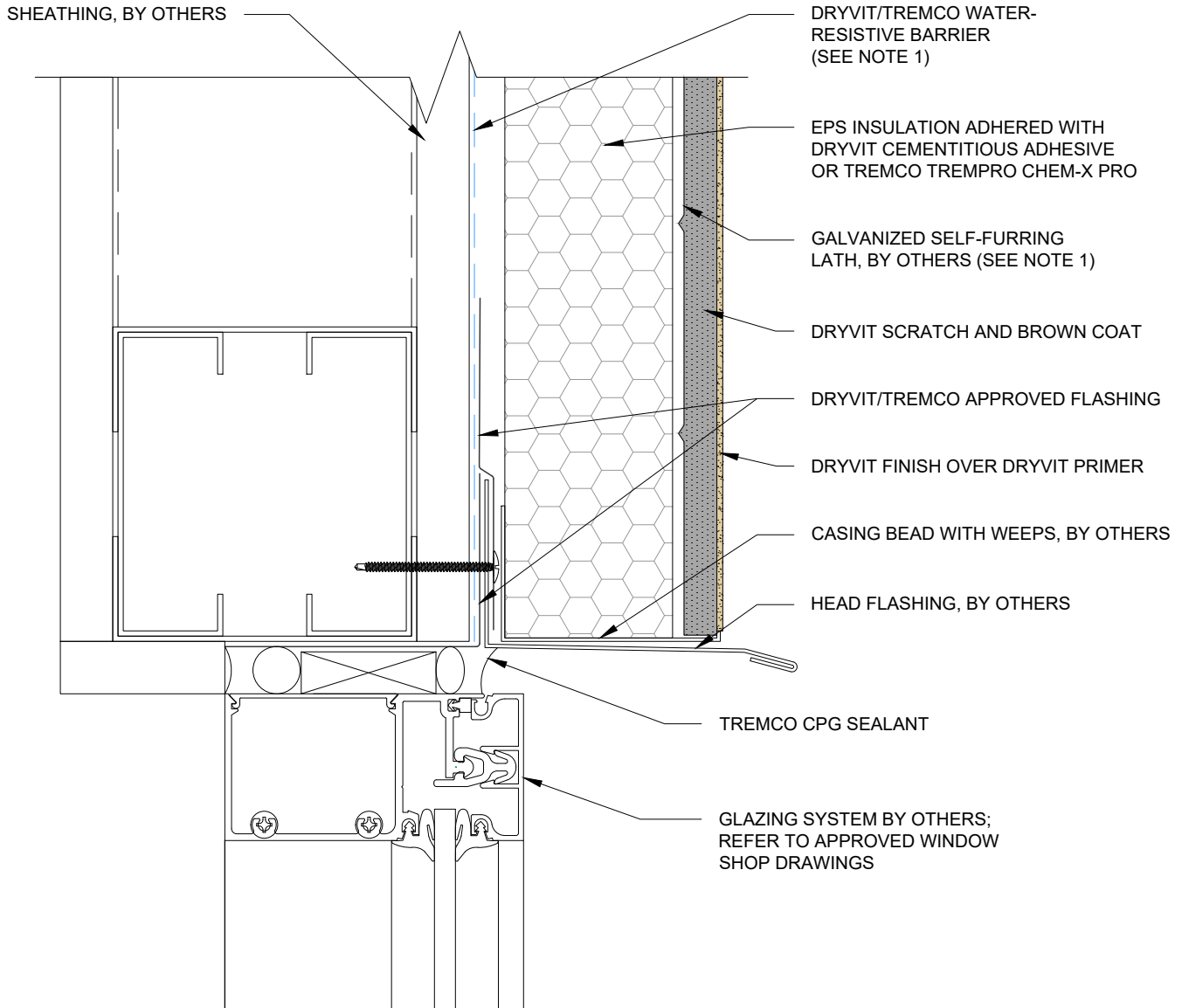


NOTES:
 1. BUILDING CODES REQUIRE 2 LAYERS OVER WOOD BASED SUBSTRATES. COMPLY WITH ALL LOCAL CODE REQUIREMENTS.

This detail is for general informational purposes, only. The project design professional determines, in its sole discretion, whether this detail or a functionally equivalent detail is best suited for the project with respect to any architecture, engineering, and design requirements, including any local building code requirements. If this document is not reviewed and the product is not approved for use by a licensed design professional, the customer agrees that the detail may contain substantive flaws requiring correction, and hereby releases Tremco CPG Inc. from any and all liability related to the design and installation of the product. This detail is subject to change without notice. Contact Tremco to ensure you have the most recent version.

StucCoat 3-Coat with Continuous Insulation



 Dryvit Technical Support: 800-556-7752	Detail: Flanged Window Sill			File Name:	 Construction Products Group
	Drawn by: KAB	Checked by: AL	Scale: 6" = 1'-0"	SCTC-CI-04	
	Revision #: 00	Revised by: -	Date: 1/17/2025		
www.tremcocpg.com					

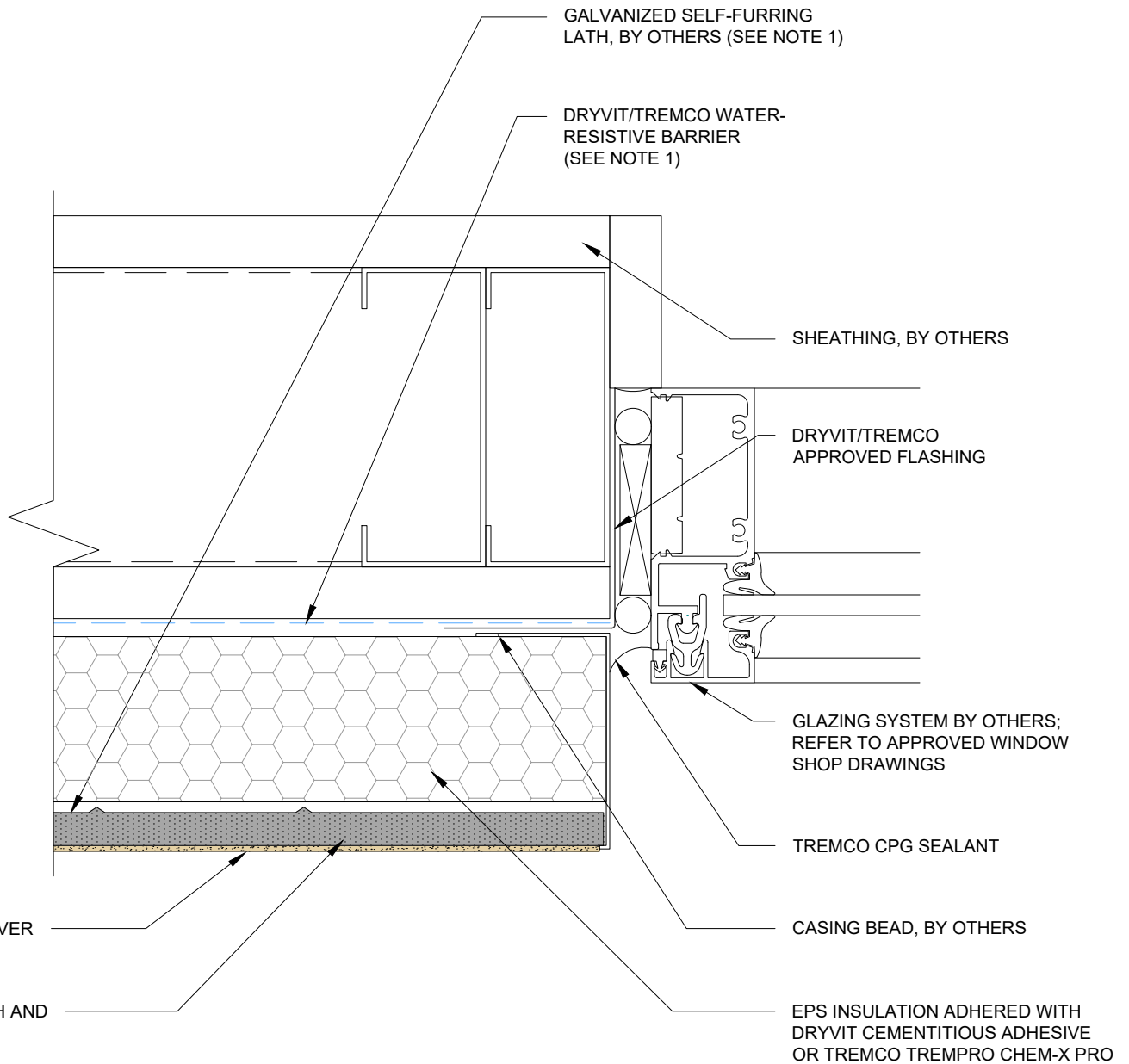


NOTES:
 1. BUILDING CODES REQUIRE 2 LAYERS OVER WOOD BASED SUBSTRATES. COMPLY WITH ALL LOCAL CODE REQUIREMENTS.

This detail is for general informational purposes, only. The project design professional determines, in its sole discretion, whether this detail or a functionally equivalent detail is best suited for the project with respect to any architecture, engineering, and design requirements, including any local building code requirements. If this document is not reviewed and the product is not approved for use by a licensed design professional, the customer agrees that the detail may contain substantive flaws requiring correction, and hereby releases Tremco CPG Inc. from any and all liability related to the design and installation of the product. This detail is subject to change without notice. Contact Tremco to ensure you have the most recent version.

StucCoat 3-Coat with Continuous Insulation

 Dryvit Technical Support: 800-556-7752	Detail: Storefront Window Sill			File Name:	 Construction Products Group
	Drawn by: KAB	Checked by: AL	Scale: 6" = 1'-0"	SCTC-CI-05	
	Revision #: 00	Revised by: -	Date: 1/17/2025		
www.tremcocpg.com					





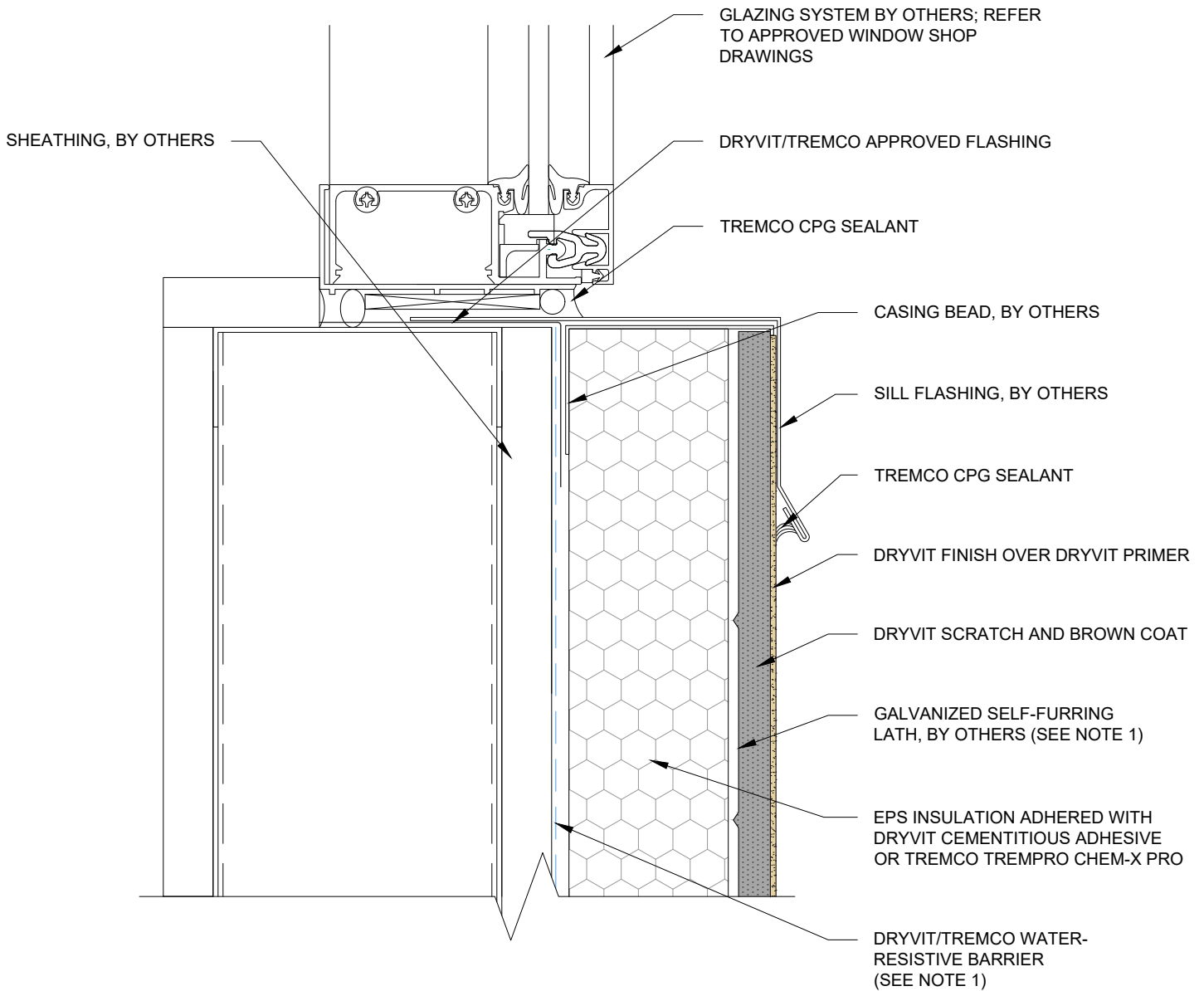
NOTES:

1. BUILDING CODES REQUIRE 2 LAYERS OVER WOOD BASED SUBSTRATES. COMPLY WITH ALL LOCAL CODE REQUIREMENTS.

This detail is for general informational purposes, only. The project design professional determines, in its sole discretion, whether this detail or a functionally equivalent detail is best suited for the project with respect to any architecture, engineering, and design requirements, including any local building code requirements. If this document is not reviewed and the product is not approved for use by a licensed design professional, the customer agrees that the detail may contain substantive flaws requiring correction, and hereby releases Tremco CPG Inc. from any and all liability related to the design and installation of the product. This detail is subject to change without notice. Contact Tremco to ensure you have the most recent version.

StucCoat 3-Coat with Continuous Insulation



 Dryvit Technical Support: 800-556-7752	Detail: Storefront Window Jamb			File Name:	 Construction Products Group
	Drawn by: KAB	Checked by: AL	Scale: 6" = 1'-0"	SCTC-CI-06	
	Revision #: 00	Revised by: -	Date: 1/17/2025		
www.tremcocpg.com					

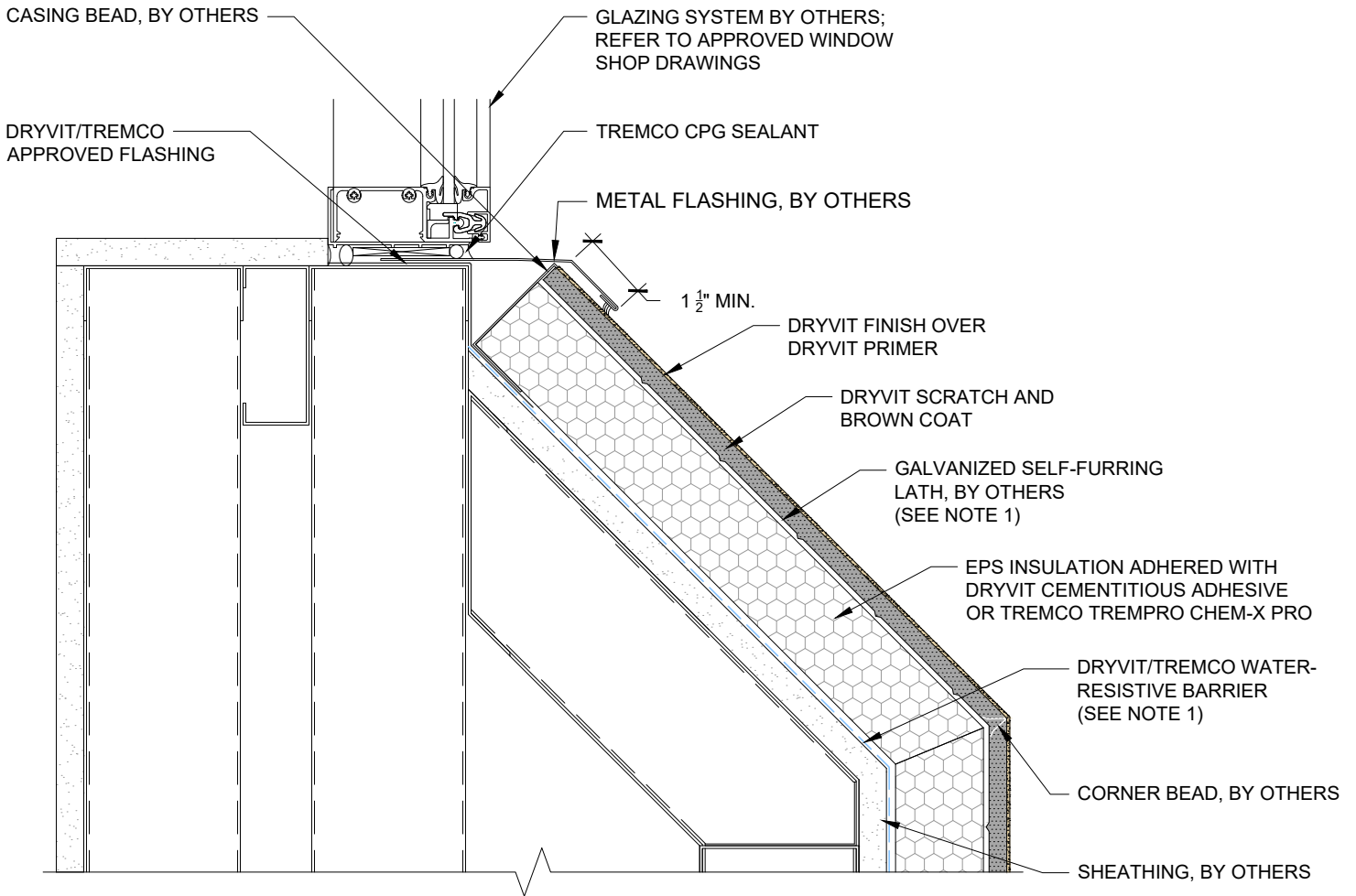


NOTES:
 1. BUILDING CODES REQUIRE 2 LAYERS OVER WOOD BASED SUBSTRATES. COMPLY WITH ALL LOCAL CODE REQUIREMENTS.

This detail is for general informational purposes, only. The project design professional determines, in its sole discretion, whether this detail or a functionally equivalent detail is best suited for the project with respect to any architecture, engineering, and design requirements, including any local building code requirements. If this document is not reviewed and the product is not approved for use by a licensed design professional, the customer agrees that the detail may contain substantive flaws requiring correction, and hereby releases Tremco CPG Inc. from any and all liability related to the design and installation of the product. This detail is subject to change without notice. Contact Tremco to ensure you have the most recent version.

StucCoat 3-Coat with Continuous Insulation

 Dryvit Technical Support: 800-556-7752	Detail: Storefront Window Sill			File Name:	 Construction Products Group
	Drawn by: KAB	Checked by: AL	Scale: 6" = 1'-0"	SCTC-CI-07	
	Revision #: 00	Revised by: -	Date: 1/17/2025		
www.tremcocpg.com					





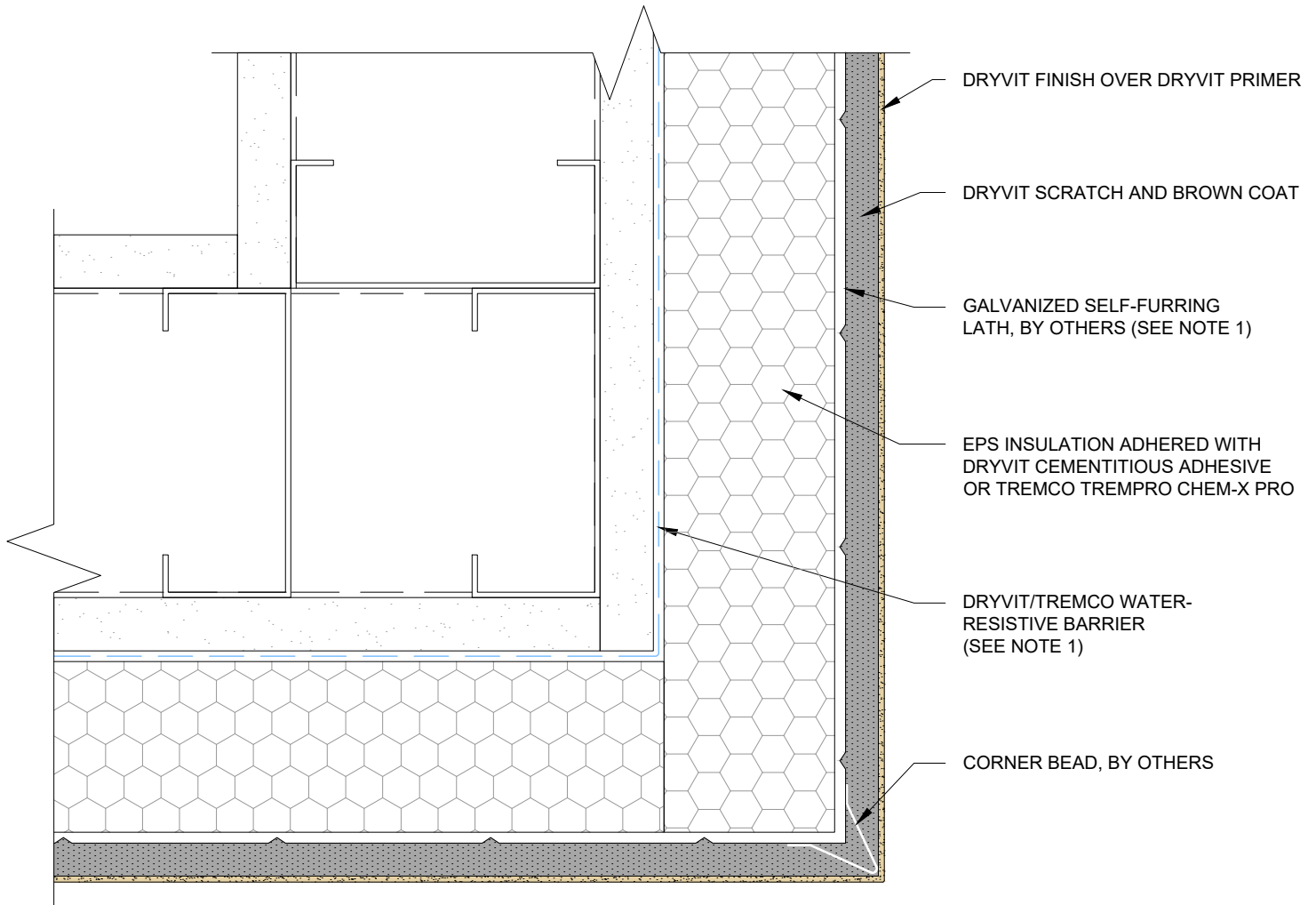
NOTES:

1. BUILDING CODES REQUIRE 2 LAYERS OVER WOOD BASED SUBSTRATES. COMPLY WITH ALL LOCAL CODE REQUIREMENTS.

This detail is for general informational purposes only. The project design professional determines, in its sole discretion, whether this detail or a functionally equivalent detail is best suited for the project with respect to any architecture, engineering, and design requirements, including any local building code requirements. If this document is not reviewed and the product is not approved for use by a licensed design professional, the customer agrees that the detail may contain substantive flaws requiring correction, and hereby releases Tremco CPG Inc. from any and all liability related to the design and installation of the product. This detail is subject to change without notice. Contact Tremco to ensure you have the most recent version.

StucCoat 3-Coat with Continuous Insulation

 Dryvit Technical Support: 800-556-7752	Detail: Sloped Sill			File Name:	
	Drawn by: KAB	Checked by: AL	Scale: 6" = 1'-0"	SCTC-CI-08	
	Revision #: 00	Revised by: -	Date: 1/17/2025		
www.tremcocpg.com			 Construction Products Group		





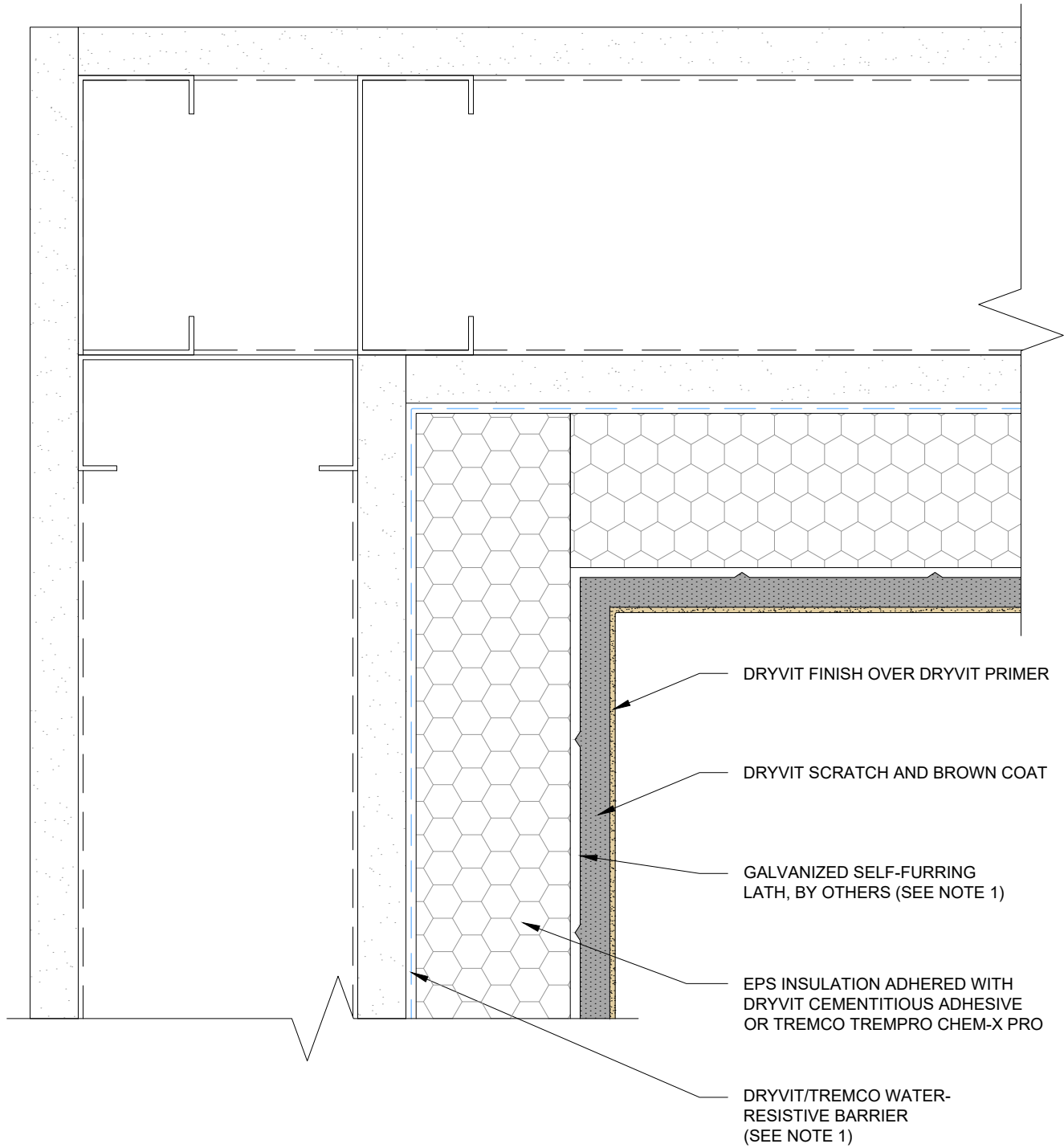
NOTES:

1. BUILDING CODES REQUIRE 2 LAYERS OVER WOOD BASED SUBSTRATES. COMPLY WITH ALL LOCAL CODE REQUIREMENTS.

This detail is for general informational purposes, only. The project design professional determines, in its sole discretion, whether this detail or a functionally equivalent detail is best suited for the project with respect to any architecture, engineering, and design requirements, including any local building code requirements. If this document is not reviewed and the product is not approved for use by a licensed design professional, the customer agrees that the detail may contain substantive flaws requiring correction, and hereby releases Tremco CPG Inc. from any and all liability related to the design and installation of the product. This detail is subject to change without notice. Contact Tremco to ensure you have the most recent version.

StucCoat 3-Coat with Continuous Insulation

 Dryvit Technical Support: 800-556-7752	Detail: Outside Corner			File Name:	 Construction Products Group
	Drawn by: KAB	Checked by: AL	Scale: 6" = 1'-0"	SCTC-CI-09	
	Revision #: 00	Revised by: -	Date: 1/17/2025		
<small>www.tremcocpg.com</small>					





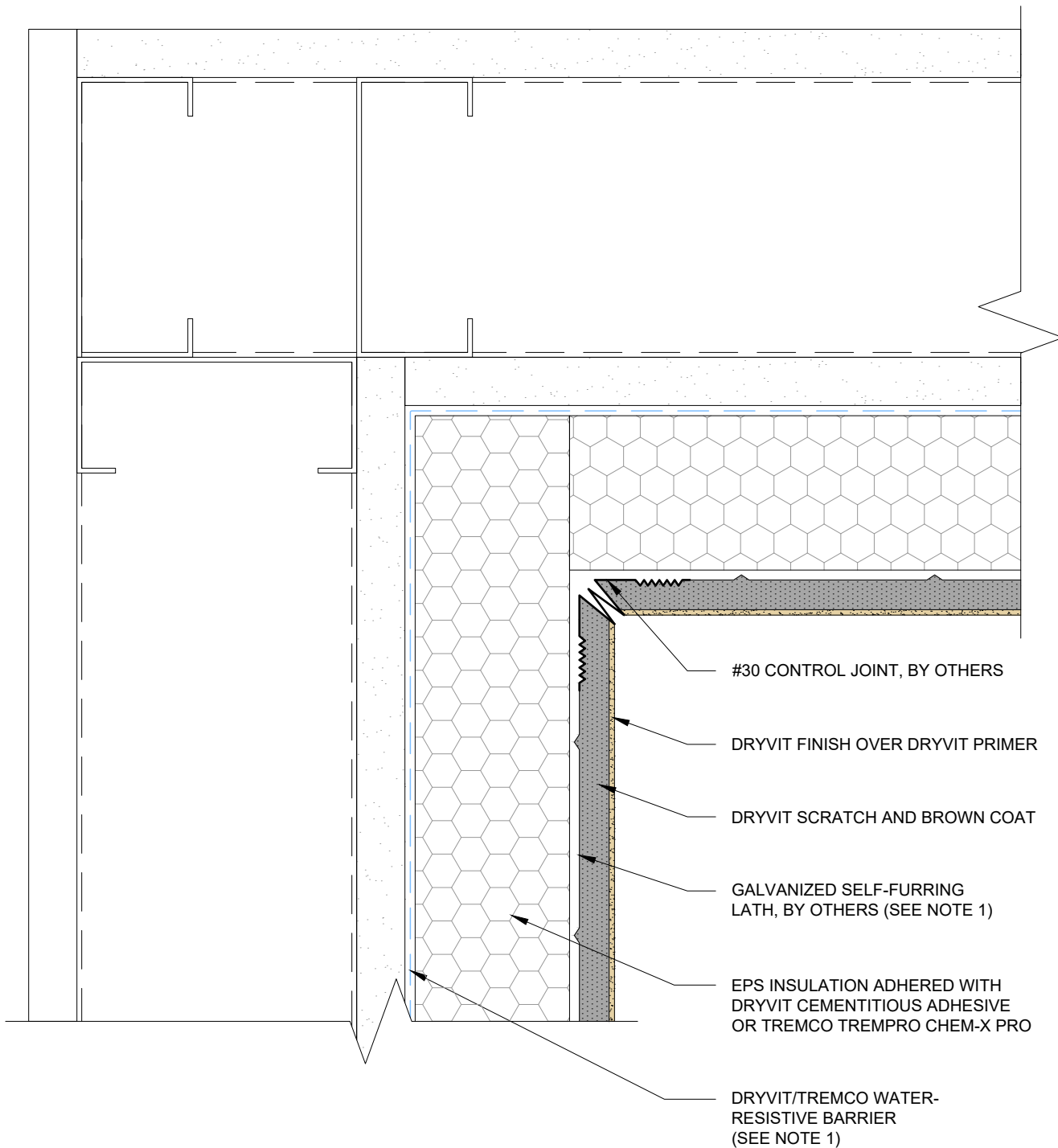
NOTES:

1. BUILDING CODES REQUIRE 2 LAYERS OVER WOOD BASED SUBSTRATES. COMPLY WITH ALL LOCAL CODE REQUIREMENTS.

This detail is for general informational purposes, only. The project design professional determines, in its sole discretion, whether this detail or a functionally equivalent detail is best suited for the project with respect to any architecture, engineering, and design requirements, including any local building code requirements. If this document is not reviewed and the product is not approved for use by a licensed design professional, the customer agrees that the detail may contain substantive flaws requiring correction, and hereby releases Tremco CPG Inc. from any and all liability related to the design and installation of the product. This detail is subject to change without notice. Contact Tremco to ensure you have the most recent version.

StucCoat 3-Coat with Continuous Insulation



 Dryvit Technical Support: 800-556-7752	Detail: Inside Corner			File Name:	 Construction Products Group
	Drawn by: KAB	Checked by: AL	Scale: 6" = 1'-0"	SCTC-CI-10	
	Revision #: 00	Revised by: -	Date: 1/17/2025		
www.tremcocpg.com					

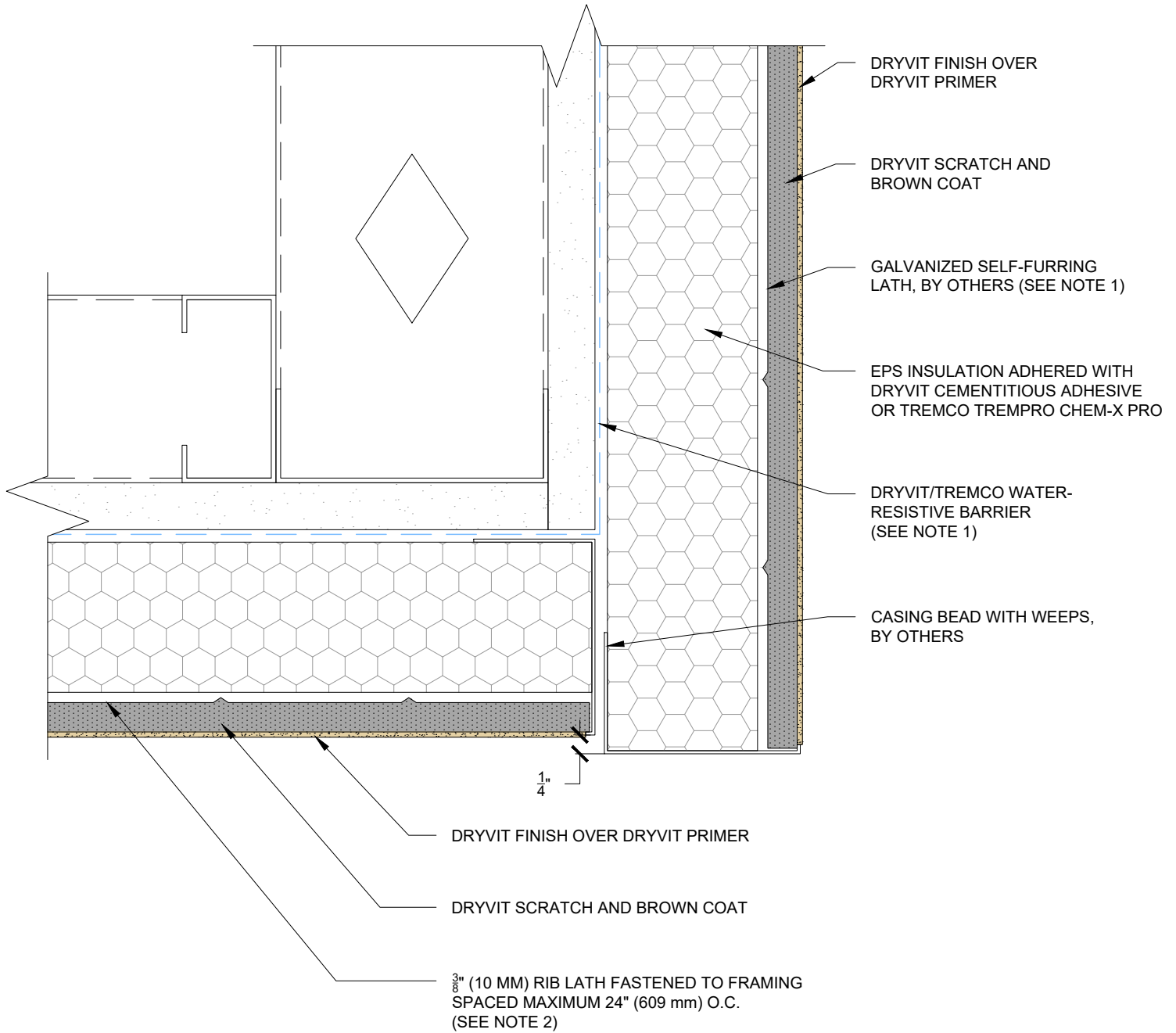


NOTES:
 1. BUILDING CODES REQUIRE 2 LAYERS OVER WOOD BASED SUBSTRATES. COMPLY WITH ALL LOCAL CODE REQUIREMENTS.

This detail is for general informational purposes only. The project design professional determines, in its sole discretion, whether this detail or a functionally equivalent detail is best suited for the project with respect to any architecture, engineering, and design requirements, including any local building code requirements. If this document is not reviewed and the product is not approved for use by a licensed design professional, the customer agrees that the detail may contain substantive flaws requiring correction, and hereby releases Tremco CPG Inc. from any and all liability related to the design and installation of the product. This detail is subject to change without notice. Contact Tremco to ensure you have the most recent version.

StucCoat 3-Coat with Continuous Insulation

 Dryvit Technical Support: 800-556-7752	Detail: Inside Corner Control Joint			File Name:	 Construction Products Group
	Drawn by: KAB	Checked by: AL	Scale: 6" = 1'-0"	SCTC-CI-11	
	Revision #: 00	Revised by: -	Date: 1/17/2025		
www.tremcocpg.com					





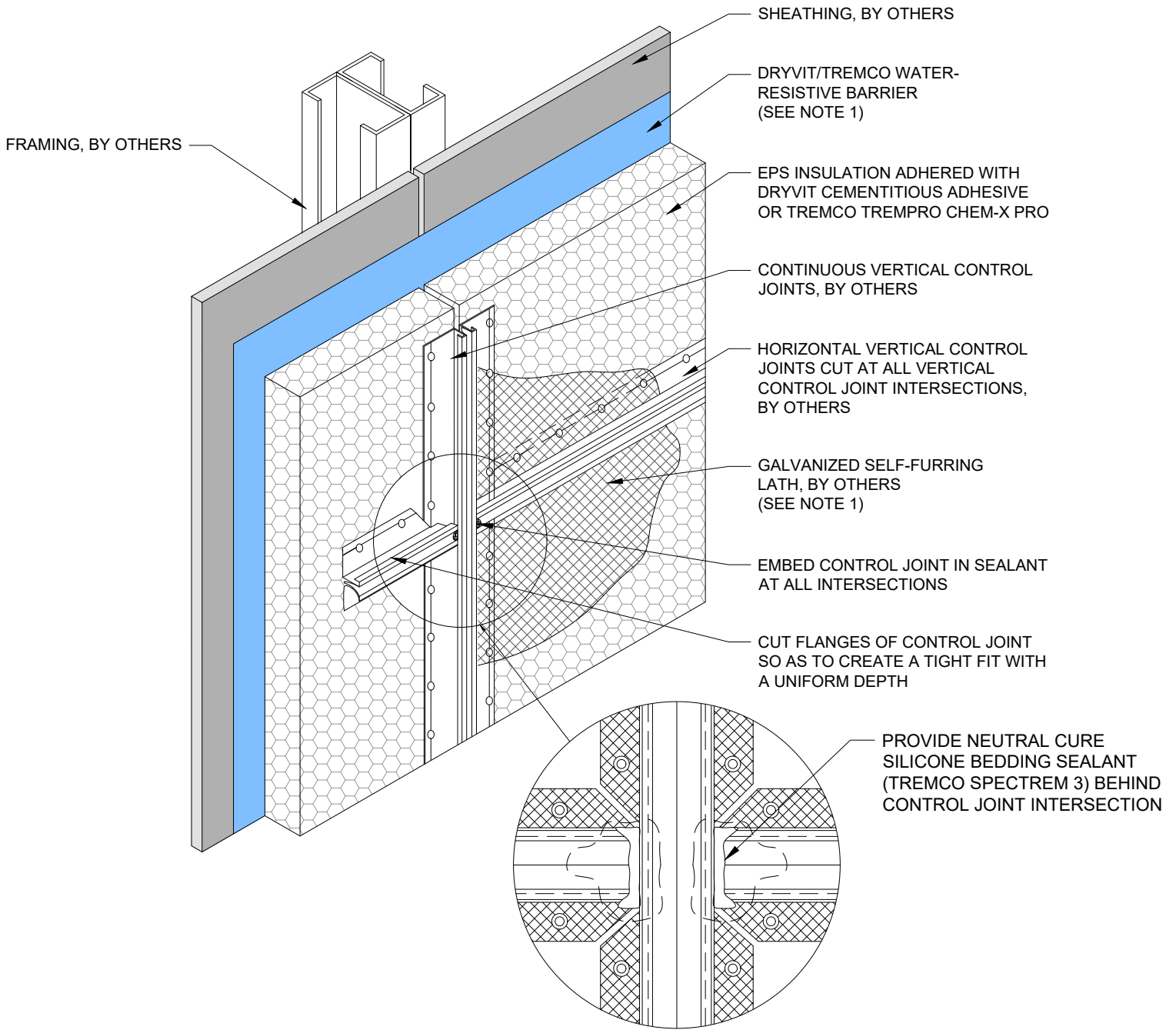
NOTES:

1. BUILDING CODES REQUIRE 2 LAYERS OVER WOOD BASED SUBSTRATES. COMPLY WITH ALL LOCAL CODE REQUIREMENTS.
2. FRAMING JOIST SPACED AT 24" (609 MM) REQUIRES $\frac{3}{8}$ " (10 MM) RIB LATH PERPENDICULAR TO JOISTS.

This detail is for general informational purposes, only. The project design professional determines, in its sole discretion, whether this detail or a functionally equivalent detail is best suited for the project with respect to any architecture, engineering, and design requirements, including any local building code requirements. If this document is not reviewed and the product is not approved for use by a licensed design professional, the customer agrees that the detail may contain substantive flaws requiring correction, and hereby releases Tremco CPG Inc. from any and all liability related to the design and installation of the product. This detail is subject to change without notice. Contact Tremco to ensure you have the most recent version.

StucCoat 3-Coat with Continuous Insulation

 Dryvit Technical Support: 800-556-7752	Detail: Soffit/Fascia Intersection			File Name:	 Construction Products Group
	Drawn by: KAB	Checked by: AL	Scale: 6" = 1'-0"	SCTC-CI-12	
	Revision #: 00	Revised by: -	Date: 1/17/2025		
www.tremcocpg.com					





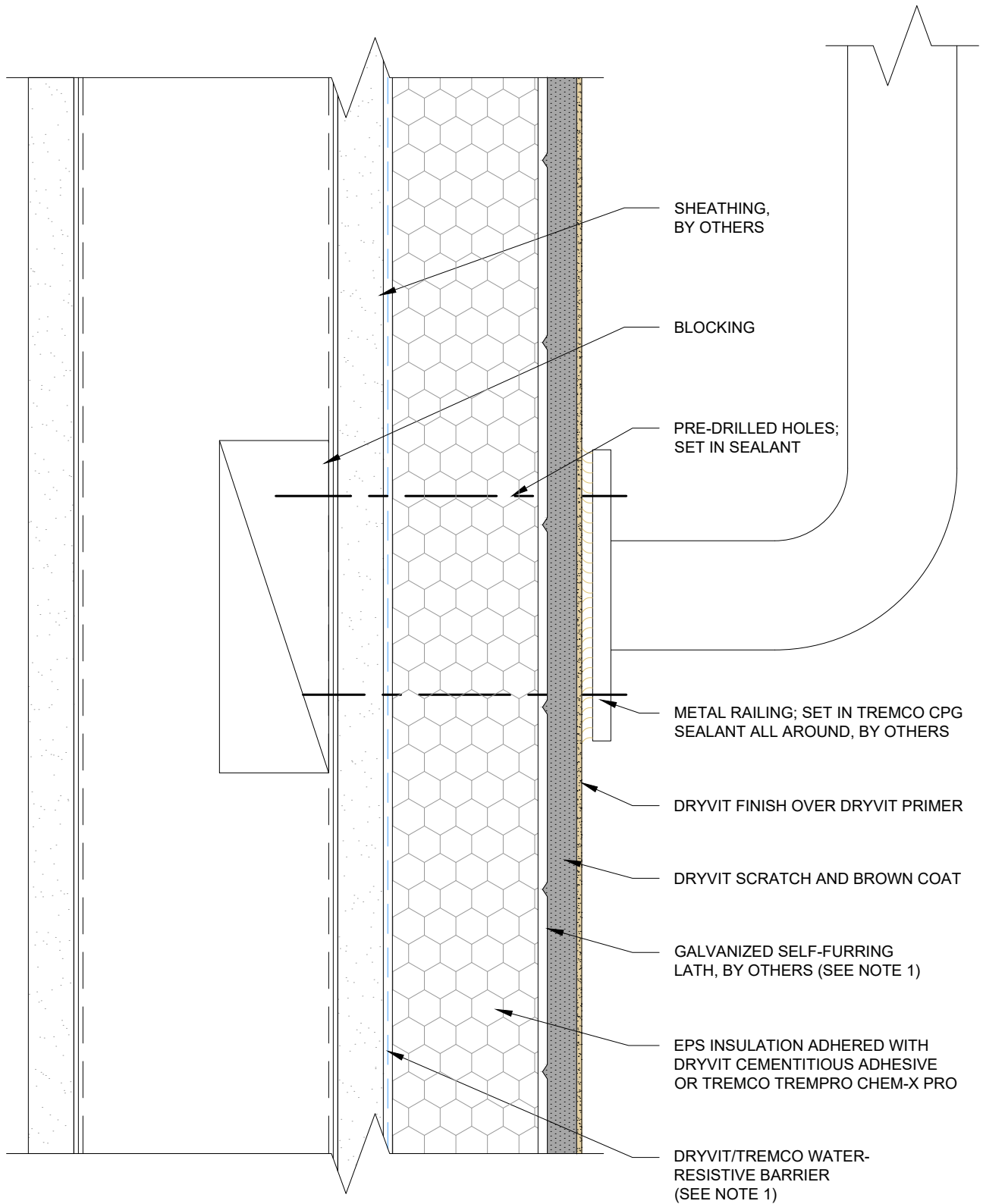
NOTES:

1. BUILDING CODES REQUIRE 2 LAYERS OVER WOOD BASED SUBSTRATES. COMPLY WITH ALL LOCAL CODE REQUIREMENTS.
2. LATH TO LAP OVER CONTROL JOINT FLANGES.
3. FRAMING BACKING IS REQUIRED AT ALL CONTROL JOINTS.

This detail is for general informational purposes, only. The project design professional determines, in its sole discretion, whether this detail or a functionally equivalent detail is best suited for the project with respect to any architecture, engineering, and design requirements, including any local building code requirements. If this document is not reviewed and the product is not approved for use by a licensed design professional, the customer agrees that the detail may contain substantive flaws requiring correction, and hereby releases Tremco CPG Inc. from any and all liability related to the design and installation of the product. This detail is subject to change without notice. Contact Tremco to ensure you have the most recent version.

StucCoat 3-Coat with Continuous Insulation

 Dryvit Technical Support: 800-556-7752	Detail: Expansion Joint Intersection			File Name:	 Construction Products Group
	Drawn by: KAB	Checked by: AL	Scale: NTS	SCTC-CI-13	
	Revision #: 00	Revised by: -	Date: 1/17/2025		
<small>www.tremcocpg.com</small>					





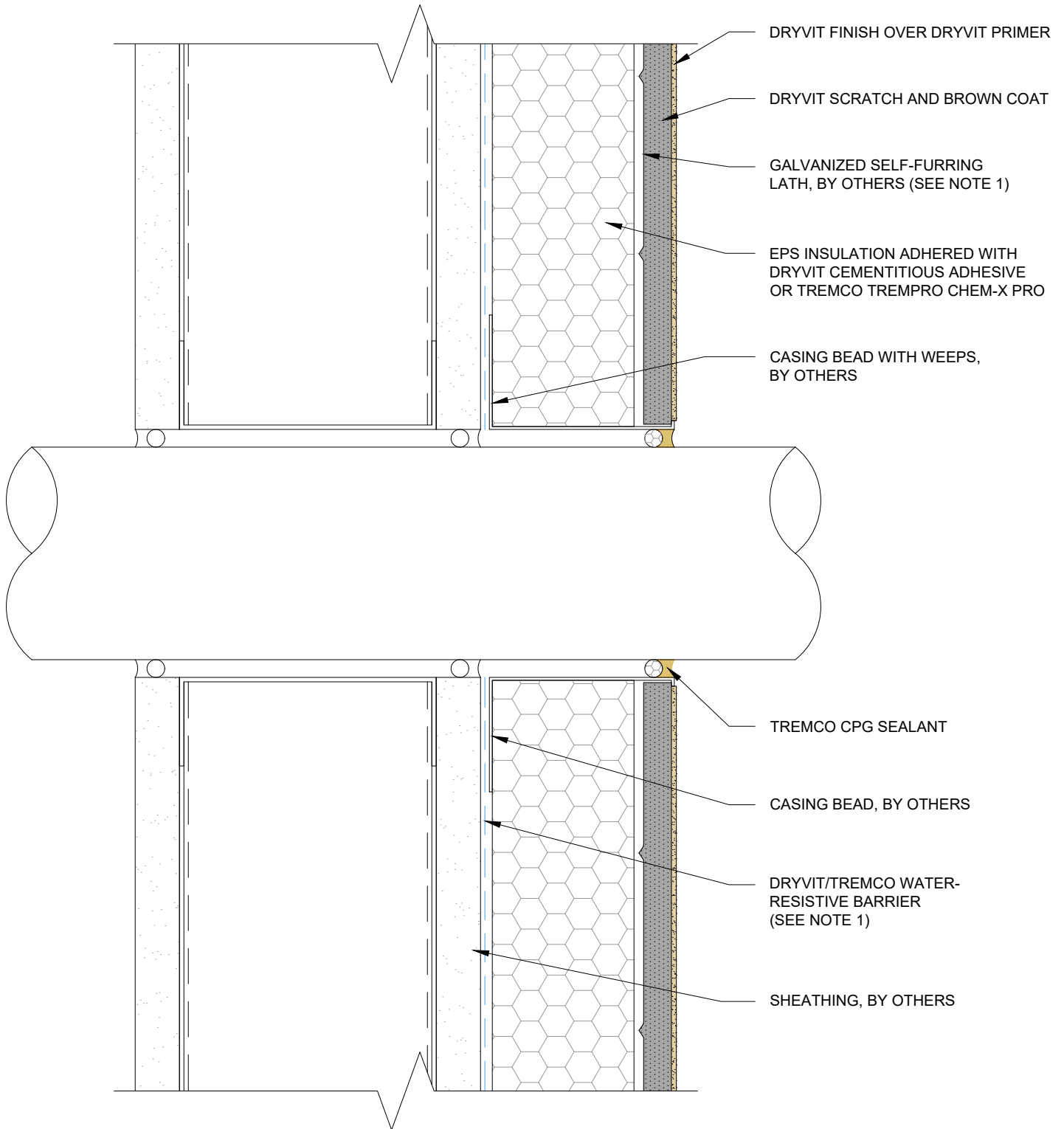
NOTES:

1. BUILDING CODES REQUIRE 2 LAYERS OVER WOOD BASED SUBSTRATES. COMPLY WITH ALL LOCAL CODE REQUIREMENTS.

This detail is for general informational purposes, only. The project design professional determines, in its sole discretion, whether this detail or a functionally equivalent detail is best suited for the project with respect to any architecture, engineering, and design requirements, including any local building code requirements. If this document is not reviewed and the product is not approved for use by a licensed design professional, the customer agrees that the detail may contain substantive flaws requiring correction, and hereby releases Tremco CPG Inc. from any and all liability related to the design and installation of the product. This detail is subject to change without notice. Contact Tremco to ensure you have the most recent version.

StucCoat 3-Coat with Continuous Insulation



 Dryvit Technical Support: 800-556-7752	Detail: Pipe Railing Attachment			File Name:	 Construction Products Group
	Drawn by: KAB	Checked by: AL	Scale: 6" = 1'-0"	SCTC-CI-14	
	Revision #: 00	Revised by: -	Date: 1/17/2025		
www.tremcocpg.com					

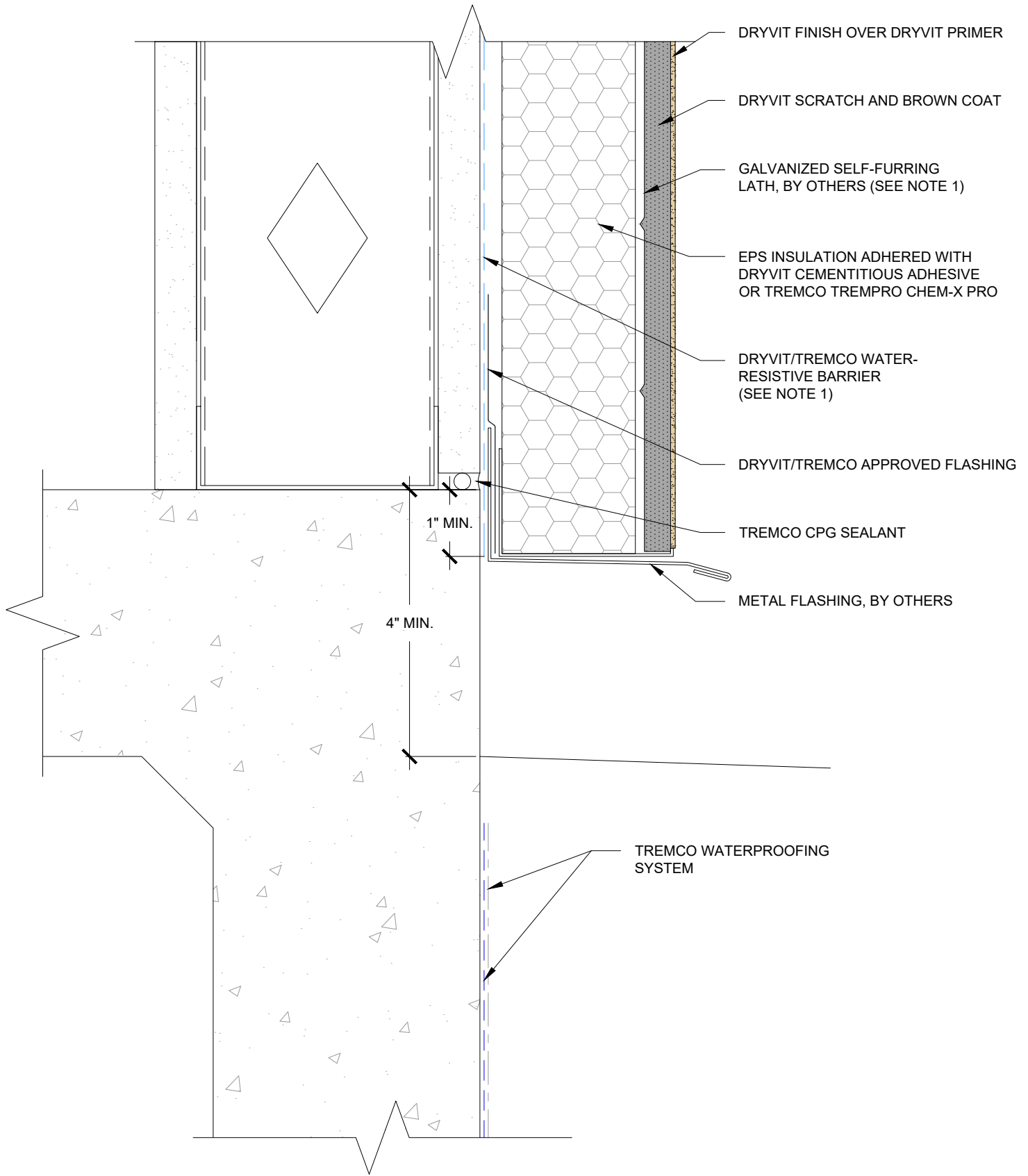


NOTES:
 1. BUILDING CODES REQUIRE 2 LAYERS OVER WOOD BASED SUBSTRATES. COMPLY WITH ALL LOCAL CODE REQUIREMENTS.

This detail is for general informational purposes, only. The project design professional determines, in its sole discretion, whether this detail or a functionally equivalent detail is best suited for the project with respect to any architecture, engineering, and design requirements, including any local building code requirements. If this document is not reviewed and the product is not approved for use by a licensed design professional, the customer agrees that the detail may contain substantive flaws requiring correction, and hereby releases Tremco CPG Inc. from any and all liability related to the design and installation of the product. This detail is subject to change without notice. Contact Tremco to ensure you have the most recent version.

StucCoat 3-Coat with Continuous Insulation



 Dryvit Technical Support: 800-556-7752	Detail: Penetration			File Name:	 Construction Products Group
	Drawn by: KAB	Checked by: AL	Scale: 6" = 1'-0"	SCTC-CI-15	
	Revision #: 00	Revised by: -	Date: 1/17/2025		
www.tremcocpg.com					

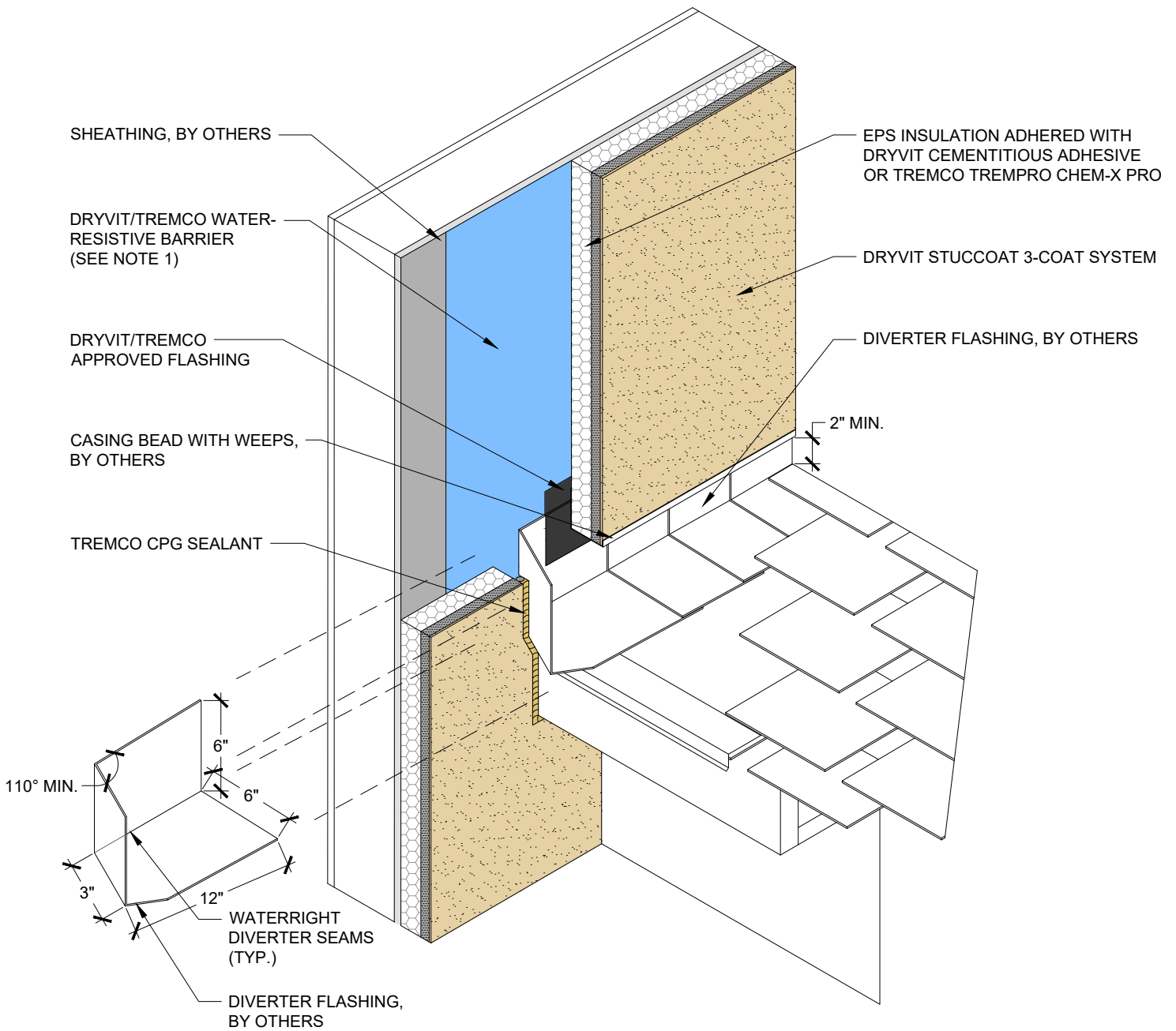


NOTES:
 1. BUILDING CODES REQUIRE 2 LAYERS OVER WOOD BASED SUBSTRATES. COMPLY WITH ALL LOCAL CODE REQUIREMENTS.

This detail is for general informational purposes, only. The project design professional determines, in its sole discretion, whether this detail or a functionally equivalent detail is best suited for the project with respect to any architecture, engineering, and design requirements, including any local building code requirements. If this document is not reviewed and the product is not approved for use by a licensed design professional, the customer agrees that the detail may contain substantive flaws requiring correction, and hereby releases Tremco CPG Inc. from any and all liability related to the design and installation of the product. This detail is subject to change without notice. Contact Tremco to ensure you have the most recent version.

StucCoat 3-Coat with Continuous Insulation

 Dryvit Technical Support: 800-556-7752	Detail: Termination at Concrete Foundation			File Name:	 Construction Products Group
	Drawn by: KAB	Checked by: AL	Scale: 6" = 1'-0"	SCTC-CI-16	
	Revision #: 00	Revised by: -	Date: 1/17/2025		
www.tremcocpg.com					

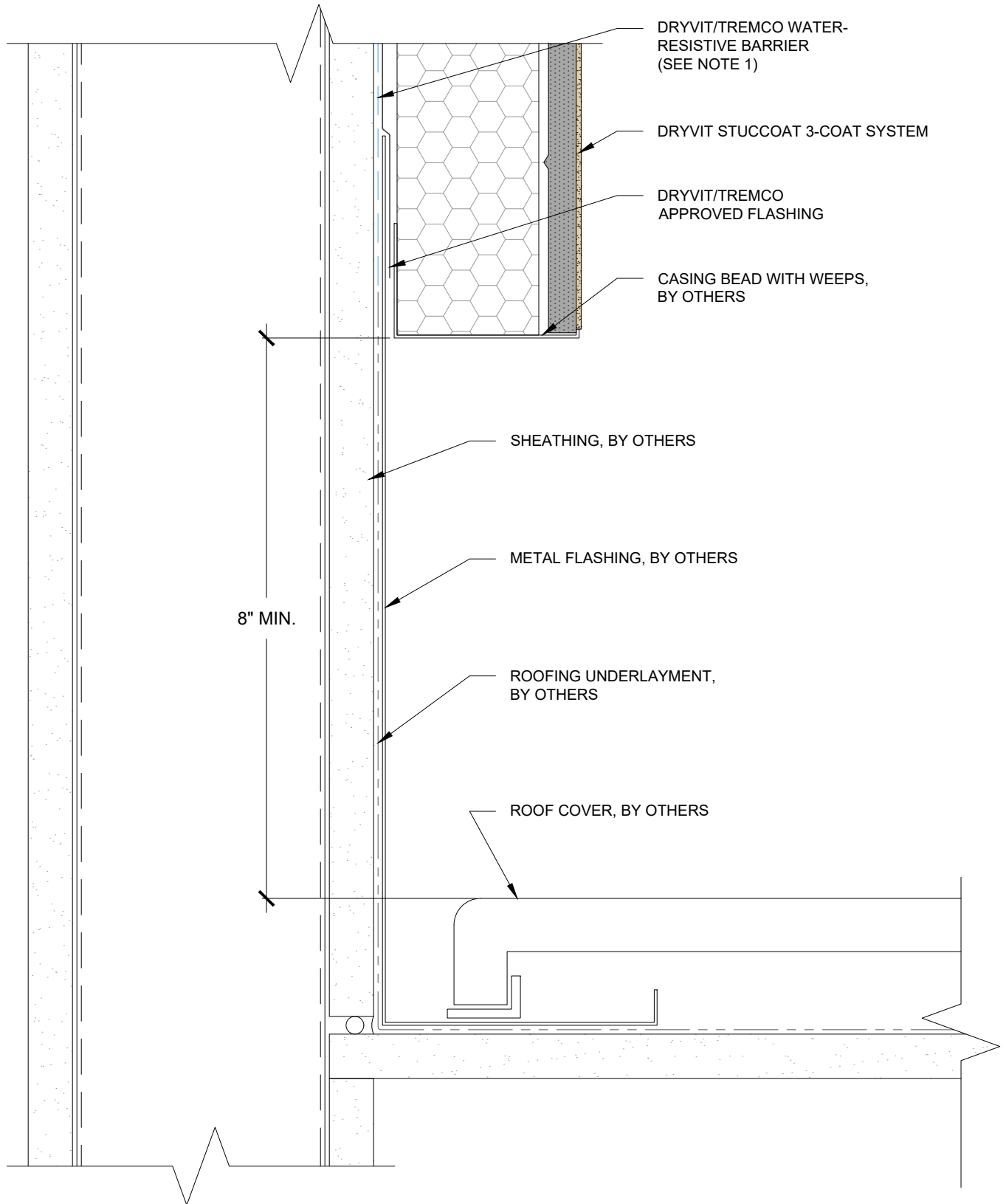


NOTES:
 1. BUILDING CODES REQUIRE 2 LAYERS OVER WOOD BASED SUBSTRATES. COMPLY WITH ALL LOCAL CODE REQUIREMENTS.

This detail is for general informational purposes only. The project design professional determines, in its sole discretion, whether this detail or a functionally equivalent detail is best suited for the project with respect to any architecture, engineering, and design requirements, including any local building code requirements. If this document is not reviewed and the product is not approved for use by a licensed design professional, the customer agrees that the detail may contain substantive flaws requiring correction, and hereby releases Tremco CPG Inc. from any and all liability related to the design and installation of the product. This detail is subject to change without notice. Contact Tremco to ensure you have the most recent version.

StucCoat 3-Coat with Continuous Insulation



 Dryvit Technical Support: 800-556-7752	Detail: Termination at Roof/Wall Intersection			File Name:
	Drawn by: KAB	Checked by: AL	Scale: NTS	SCTC-CI-17
	Revision #: 00	Revised by: -	Date: 1/17/2025	
www.tremcocpg.com				 Construction Products Group

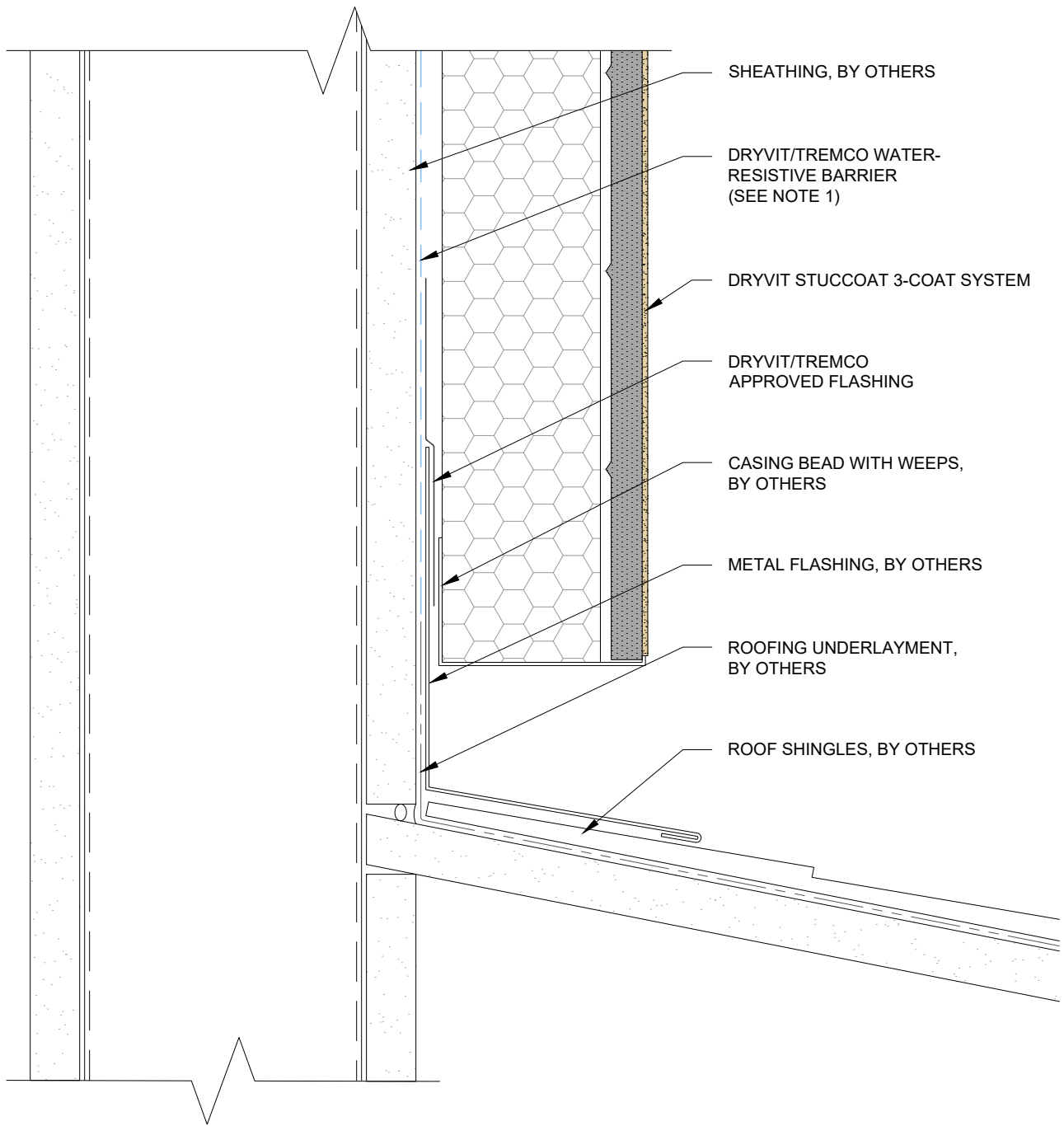


NOTES:
 1. BUILDING CODES REQUIRE 2 LAYERS OVER WOOD BASED SUBSTRATES. COMPLY WITH ALL LOCAL CODE REQUIREMENTS.

This detail is for general informational purposes only. The project design professional determines, in its sole discretion, whether this detail or a functionally equivalent detail is best suited for the project with respect to any architecture, engineering, and design requirements, including any local building code requirements. If this document is not reviewed and the product is not approved for use by a licensed design professional, the customer agrees that the detail may contain substantive flaws requiring correction, and hereby releases Tremco CPG Inc. from any and all liability related to the design and installation of the product. This detail is subject to change without notice. Contact Tremco to ensure you have the most recent version.

StucCoat 3-Coat with Continuous Insulation



 Dryvit Technical Support: 800-556-7752	Detail: Termination at Roof/Wall Intersection - Flat Roof			File Name:	 Construction Products Group
	Drawn by: KAB	Checked by: AL	Scale: 6" = 1'-0"	SCTC-CI-18	
	Revision #: 00	Revised by: -	Date: 1/17/2025		
www.tremcocpg.com					



NOTES:
 1. BUILDING CODES REQUIRE 2 LAYERS OVER WOOD BASED SUBSTRATES. COMPLY WITH ALL LOCAL CODE REQUIREMENTS.

This detail is for general informational purposes, only. The project design professional determines, in its sole discretion, whether this detail or a functionally equivalent detail is best suited for the project with respect to any architecture, engineering, and design requirements, including any local building code requirements. If this document is not reviewed and the product is not approved for use by a licensed design professional, the customer agrees that the detail may contain substantive flaws requiring correction, and hereby releases Tremco CPG Inc. from any and all liability related to the design and installation of the product. This detail is subject to change without notice. Contact Tremco to ensure you have the most recent version.

StucCoat 3-Coat with Continuous Insulation

 Dryvit Technical Support: 800-556-7752	Detail: Termination at Roof/Wall Intersection - Shingled Roof			File Name:	 Construction Products Group
	Drawn by: KAB	Checked by: AL	Scale: 6" = 1'-0"	SCTC-CI-19	
	Revision #: 00	Revised by: -	Date: 1/17/2025		
www.tremcocpg.com					

DRYVIT/TREMCO
WATER-RESISTIVE BARRIER
(SEE NOTE 1)

DRYVIT STUCCOAT 3-COAT
SYSTEM

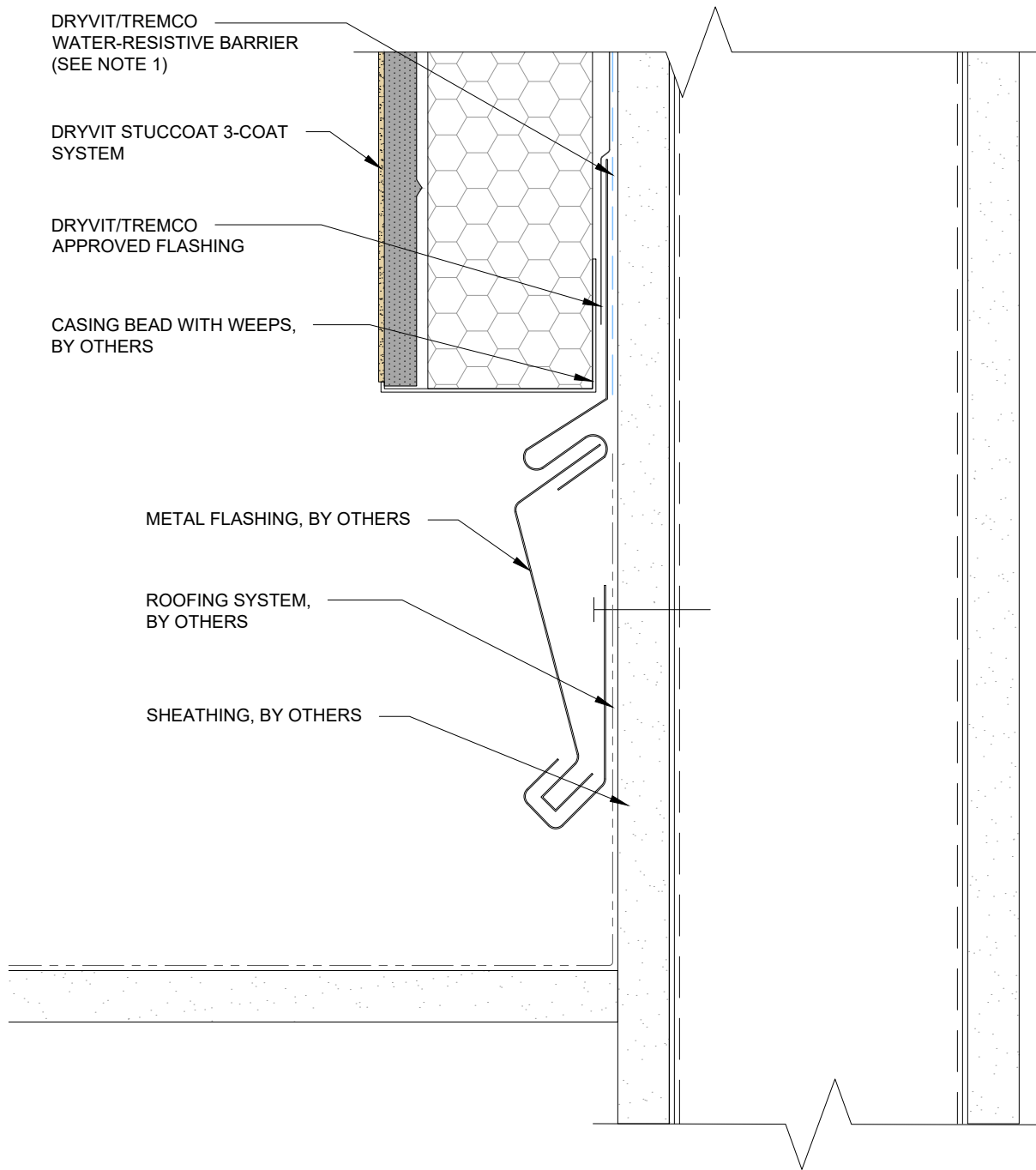
DRYVIT/TREMCO
APPROVED FLASHING

CASING BEAD WITH WEEPS,
BY OTHERS

METAL FLASHING, BY OTHERS

ROOFING SYSTEM,
BY OTHERS

SHEATHING, BY OTHERS



NOTES:

1. BUILDING CODES REQUIRE 2 LAYERS OVER WOOD BASED SUBSTRATES. COMPLY WITH ALL LOCAL CODE REQUIREMENTS.

This detail is for general informational purposes only. The project design professional determines, in its sole discretion, whether this detail or a functionally equivalent detail is best suited for the project with respect to any architecture, engineering, and design requirements, including any local building code requirements. If this document is not reviewed and the product is not approved for use by a licensed design professional, the customer agrees that the detail may contain substantive flaws requiring correction, and hereby releases Tremco CPG Inc. from any and all liability related to the design and installation of the product. This detail is subject to change without notice. Contact Tremco to ensure you have the most recent version.

Stuccoat 3-Coat with Continuous Insulation

Detail: Termination at Parapet/Wall Intersection

File Name:

Drawn by: KAB

Checked by: AL

Scale: 6" = 1'-0"

SCTC-CI-20

Revision #: 00

Revised by: -

Date: 1/17/2025

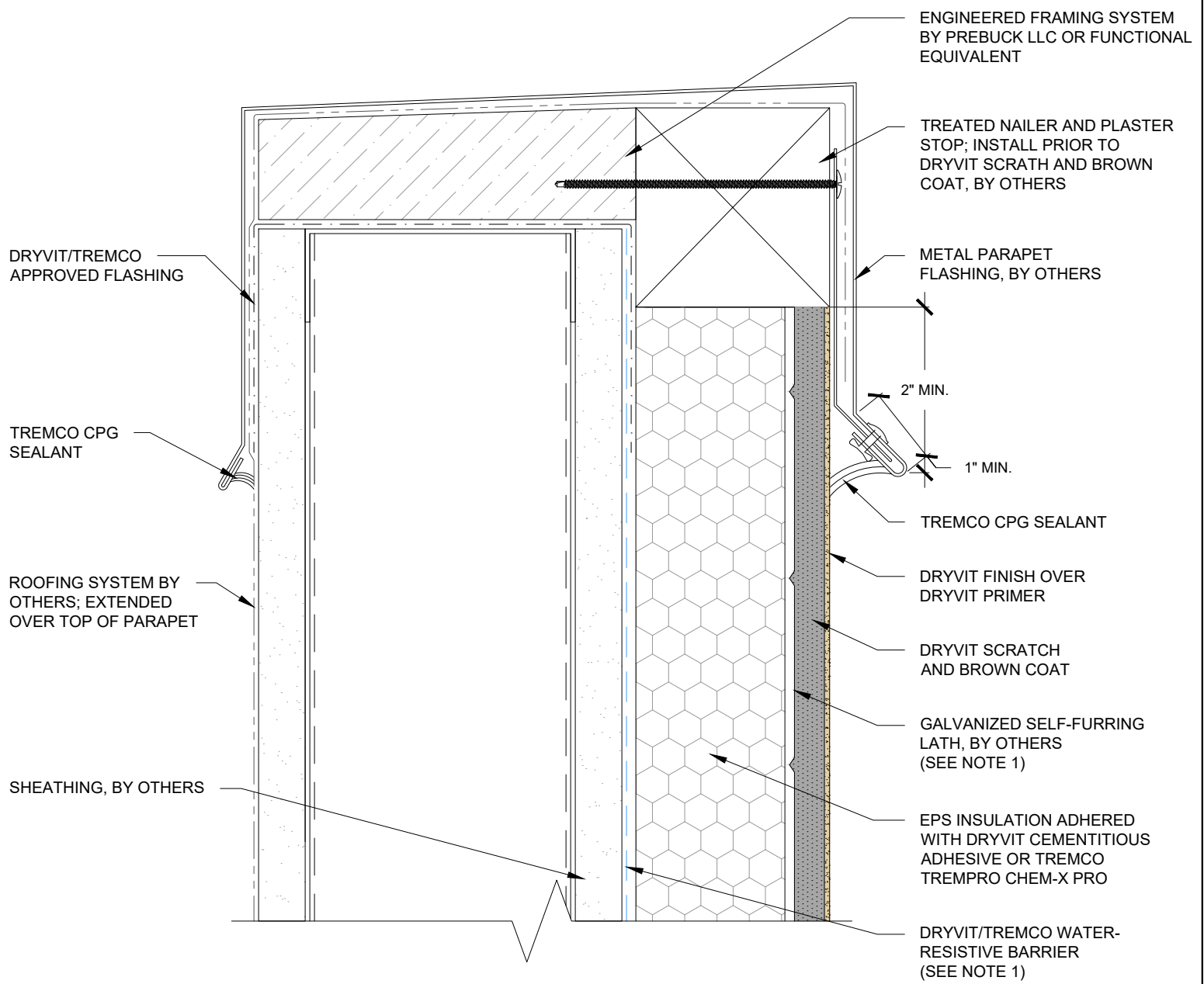
www.tremcocpg.com



Dryvit Technical Support: 800-556-7752



Construction Products Group



NOTES:
 1. BUILDING CODES REQUIRE 2 LAYERS OVER WOOD BASED SUBSTRATES. COMPLY WITH ALL LOCAL CODE REQUIREMENTS.

This detail is for general informational purposes, only. The project design professional determines, in its sole discretion, whether this detail or a functionally equivalent detail is best suited for the project with respect to any architecture, engineering, and design requirements, including any local building code requirements. If this document is not reviewed and the product is not approved for use by a licensed design professional, the customer agrees that the detail may contain substantive flaws requiring correction, and hereby releases Tremco CPG Inc. from any and all liability related to the design and installation of the product. This detail is subject to change without notice. Contact Tremco to ensure you have the most recent version.

StucCoat 3-Coat with Continuous Insulation



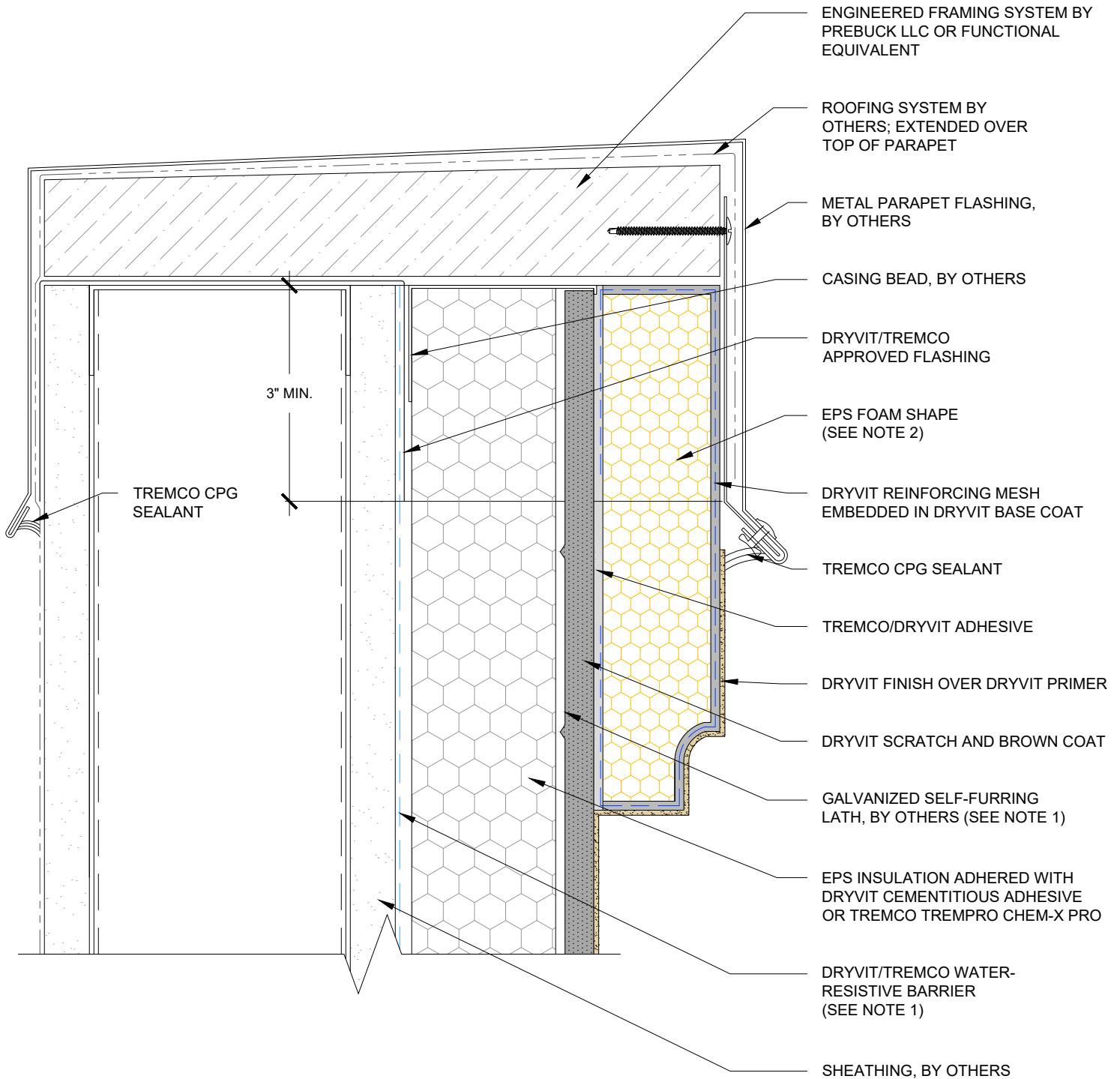
Dryvit Technical Support: 800-556-7752

Detail: Parapet Flashing		
Drawn by: KAB	Checked by: 6" = 1'-0"	Scale: NTS
Revision #: 00	Revised by: -	Date: 1/17/2025

File Name:
SCTC-CI-21



Construction Products Group



- NOTES:
1. BUILDING CODES REQUIRE 2 LAYERS OVER WOOD BASED SUBSTRATES. COMPLY WITH ALL LOCAL CODE REQUIREMENTS.
 2. REFERENCE DS854 FOR APPLICATION OF FOAM SHAPES.

This detail is for general informational purposes, only. The project design professional determines, in its sole discretion, whether this detail or a functionally equivalent detail is best suited for the project with respect to any architecture, engineering, and design requirements, including any local building code requirements. If this document is not reviewed and the product is not approved for use by a licensed design professional, the customer agrees that the detail may contain substantive flaws requiring correction, and hereby releases Tremco CPG Inc. from any and all liability related to the design and installation of the product. This detail is subject to change without notice. Contact Tremco to ensure you have the most recent version.

StucCoat 3-Coat with Continuous Insulation



Detail: EPS Cornice

Drawn by: KAB

Revision #: 00

Checked by: 6" = 1'-0"

Revised by: -

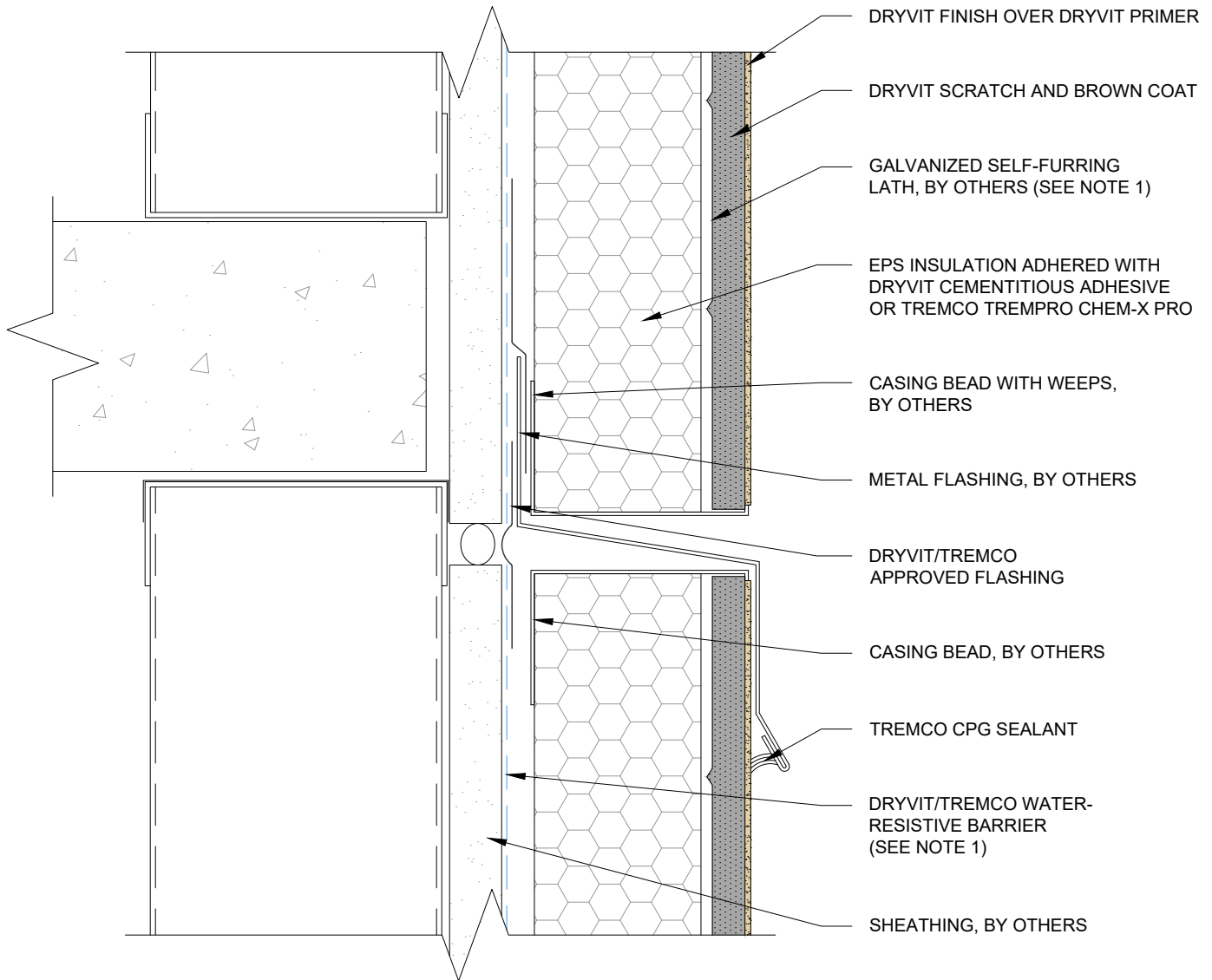
Scale: NTS

Date: 1/17/2025

File Name:

SCTC-CI-22





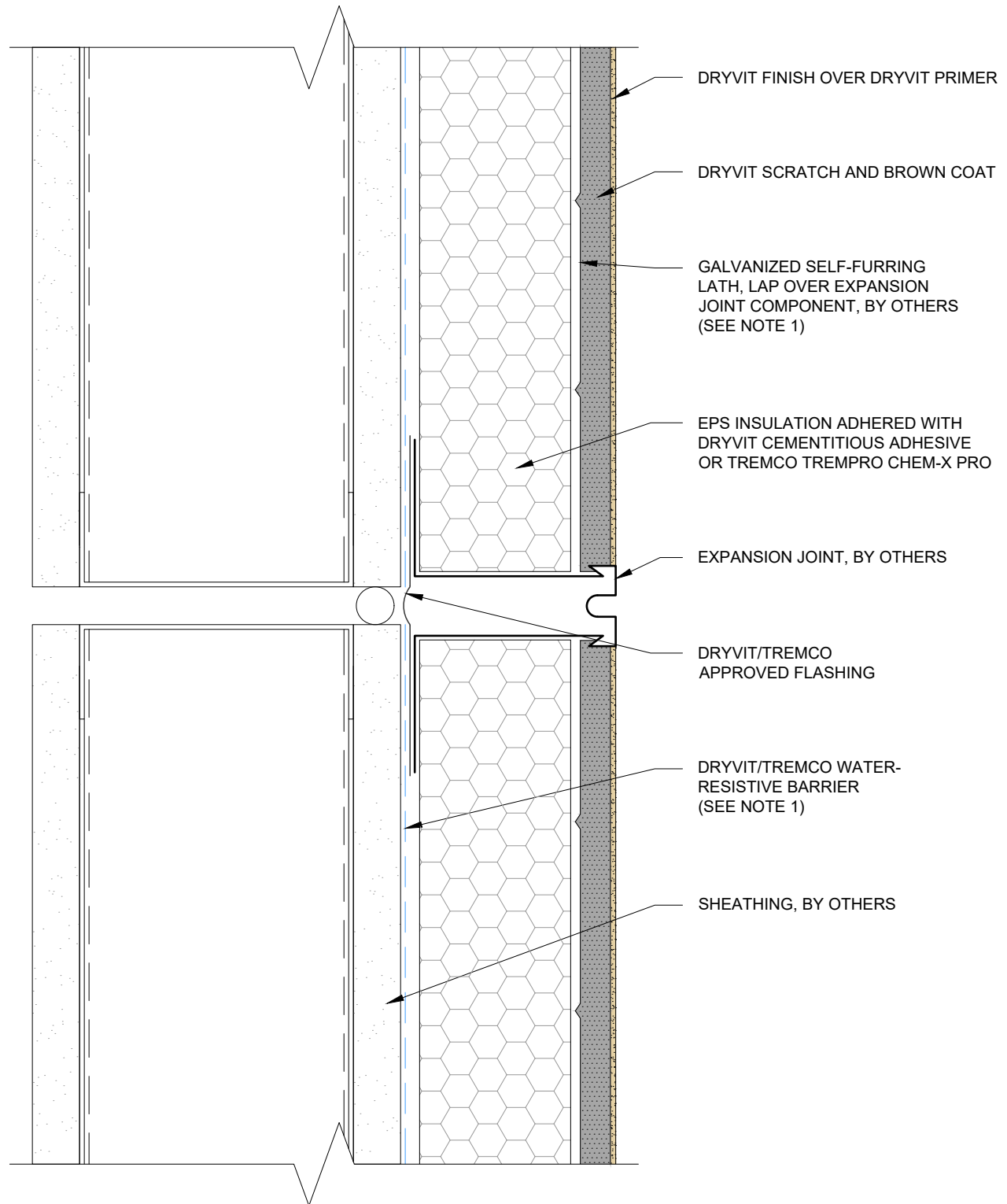


NOTES:
 1. BUILDING CODES REQUIRE 2 LAYERS OVER WOOD BASED SUBSTRATES. COMPLY WITH ALL LOCAL CODE REQUIREMENTS.

This detail is for general informational purposes, only. The project design professional determines, in its sole discretion, whether this detail or a functionally equivalent detail is best suited for the project with respect to any architecture, engineering, and design requirements, including any local building code requirements. If this document is not reviewed and the product is not approved for use by a licensed design professional, the customer agrees that the detail may contain substantive flaws requiring correction, and hereby releases Tremco CPG Inc. from any and all liability related to the design and installation of the product. This detail is subject to change without notice. Contact Tremco to ensure you have the most recent version.

StucCoat 3-Coat with Continuous Insulation

 Dryvit Technical Support: 800-556-7752	Detail: Horizontal Flashing and Expansion Joint			File Name:	 Construction Products Group
	Drawn by: KAB	Checked by: 6" = 1'-0"	Scale: NTS	SCTC-CI-23	
	Revision #: 00	Revised by: -	Date: 1/17/2025		
<small>www.tremcocpg.com</small>					





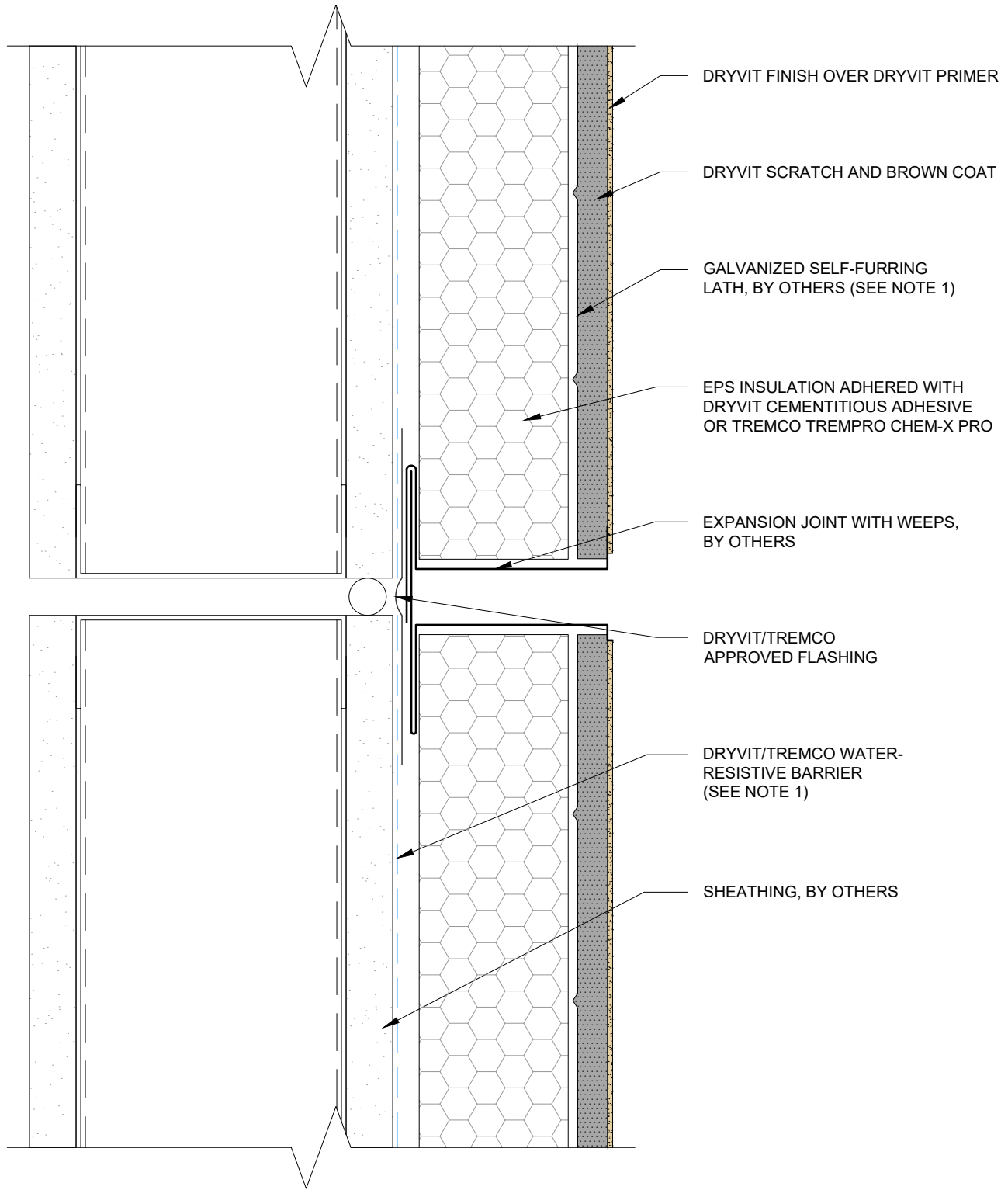
NOTES:

1. BUILDING CODES REQUIRE 2 LAYERS OVER WOOD BASED SUBSTRATES. COMPLY WITH ALL LOCAL CODE REQUIREMENTS.

This detail is for general informational purposes, only. The project design professional determines, in its sole discretion, whether this detail or a functionally equivalent detail is best suited for the project with respect to any architecture, engineering, and design requirements, including any local building code requirements. If this document is not reviewed and the product is not approved for use by a licensed design professional, the customer agrees that the detail may contain substantive flaws requiring correction, and hereby releases Tremco CPG Inc. from any and all liability related to the design and installation of the product. This detail is subject to change without notice. Contact Tremco to ensure you have the most recent version.

StucCoat 3-Coat with Continuous Insulation



 Dryvit Technical Support: 800-556-7752	Detail: Horizontal Expansion Joint			File Name:	 Construction Products Group
	Drawn by: KAB	Checked by: 6" = 1'-0"	Scale: NTS	SCTC-CI-24	
	Revision #: 00	Revised by: -	Date: 1/17/2025		
www.tremcocpg.com					

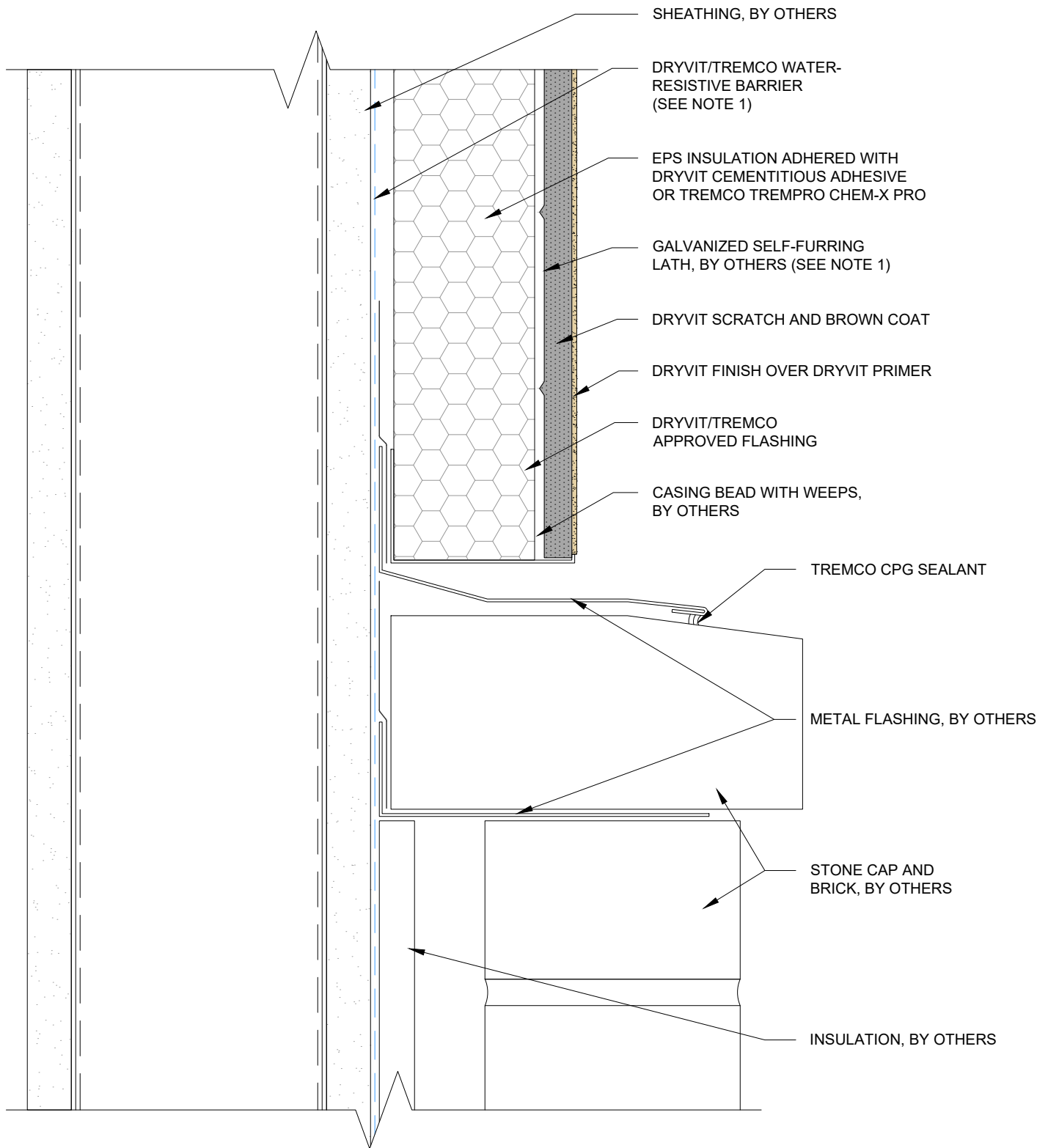


NOTES:
 1. BUILDING CODES REQUIRE 2 LAYERS OVER WOOD BASED SUBSTRATES. COMPLY WITH ALL LOCAL CODE REQUIREMENTS.

This detail is for general informational purposes only. The project design professional determines, in its sole discretion, whether this detail or a functionally equivalent detail is best suited for the project with respect to any architecture, engineering, and design requirements, including any local building code requirements. If this document is not reviewed and the product is not approved for use by a licensed design professional, the customer agrees that the detail may contain substantive flaws requiring correction, and hereby releases Tremco CPG Inc. from any and all liability related to the design and installation of the product. This detail is subject to change without notice. Contact Tremco to ensure you have the most recent version.

StucCoat 3-Coat with Continuous Insulation



 Dryvit Technical Support: 800-556-7752	Detail: Two Piece Horizontal Expansion Joint			File Name:	 Construction Products Group
	Drawn by: KAB	Checked by: 6" = 1'-0"	Scale: NTS	SCTC-CI-25	
	Revision #: 00	Revised by: -	Date: 1/17/2025		
www.tremcocpg.com					

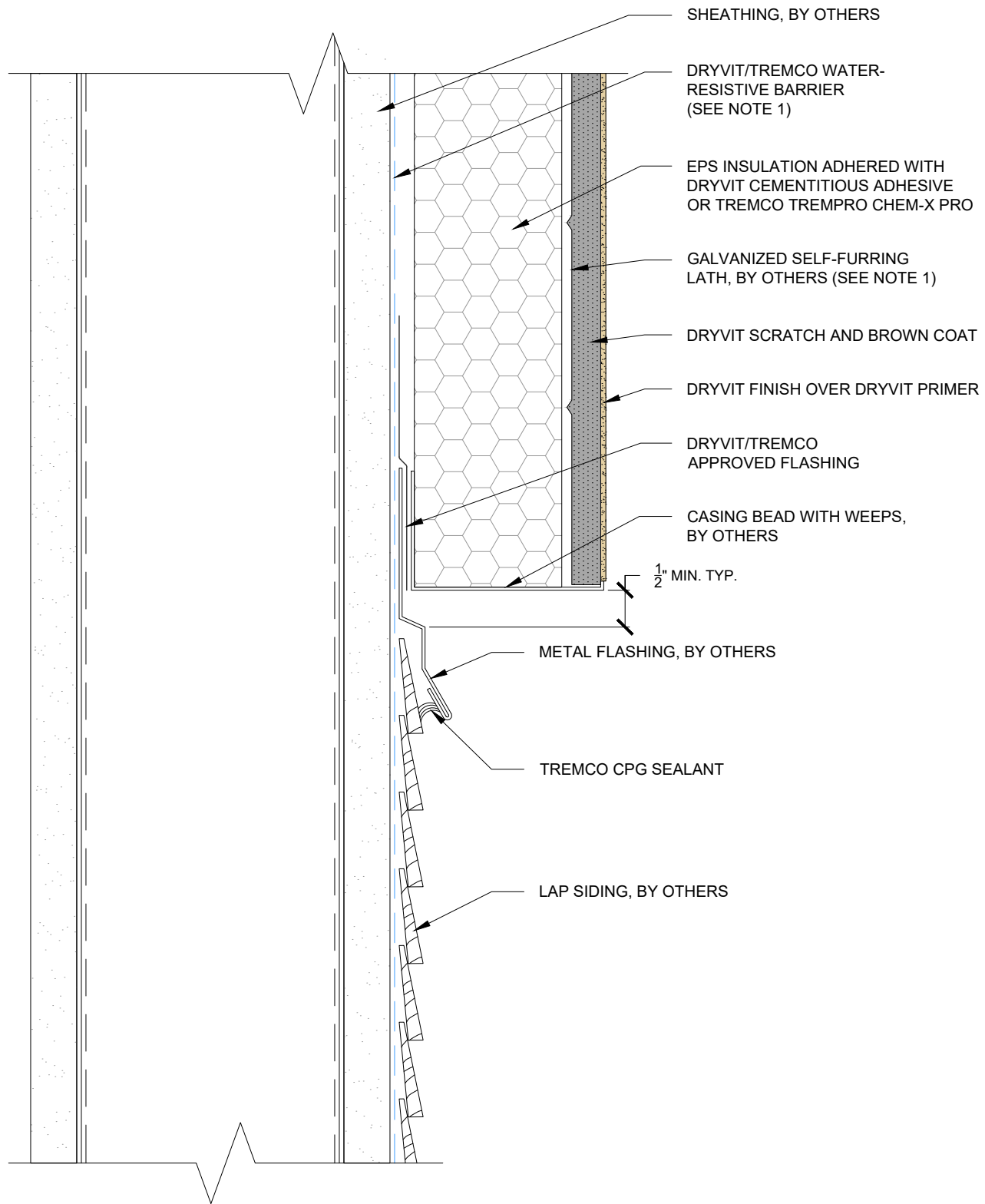


NOTES:
 1. BUILDING CODES REQUIRE 2 LAYERS OVER WOOD BASED SUBSTRATES. COMPLY WITH ALL LOCAL CODE REQUIREMENTS.

This detail is for general informational purposes, only. The project design professional determines, in its sole discretion, whether this detail or a functionally equivalent detail is best suited for the project with respect to any architecture, engineering, and design requirements, including any local building code requirements. If this document is not reviewed and the product is not approved for use by a licensed design professional, the customer agrees that the detail may contain substantive flaws requiring correction, and hereby releases Tremco CPG Inc. from any and all liability related to the design and installation of the product. This detail is subject to change without notice. Contact Tremco to ensure you have the most recent version.

StucCoat 3-Coat with Continuous Insulation

 Dryvit Technical Support: 800-556-7752	Detail: Horizontal Termination at Brick Wall			File Name:	 Construction Products Group
	Drawn by: KAB	Checked by: 6" = 1'-0"	Scale: NTS	SCTC-CI-26	
	Revision #: 00	Revised by: -	Date: 1/17/2025		
www.tremcocpg.com					



NOTES:
 1. BUILDING CODES REQUIRE 2 LAYERS OVER WOOD BASED SUBSTRATES. COMPLY WITH ALL LOCAL CODE REQUIREMENTS.

This detail is for general informational purposes, only. The project design professional determines, in its sole discretion, whether this detail or a functionally equivalent detail is best suited for the project with respect to any architecture, engineering, and design requirements, including any local building code requirements. If this document is not reviewed and the product is not approved for use by a licensed design professional, the customer agrees that the detail may contain substantive flaws requiring correction, and hereby releases Tremco CPG Inc. from any and all liability related to the design and installation of the product. This detail is subject to change without notice. Contact Tremco to ensure you have the most recent version.

StucCoat 3-Coat with Continuous Insulation

 Dryvit Technical Support: 800-556-7752	Detail: Horizontal Termination at Lap Siding			File Name:	 Construction Products Group
	Drawn by: KAB	Checked by: 6" = 1'-0"	Scale: NTS	SCTC-CI-27	
	Revision #: 00	Revised by: -	Date: 1/17/2025		
www.tremcocpg.com					